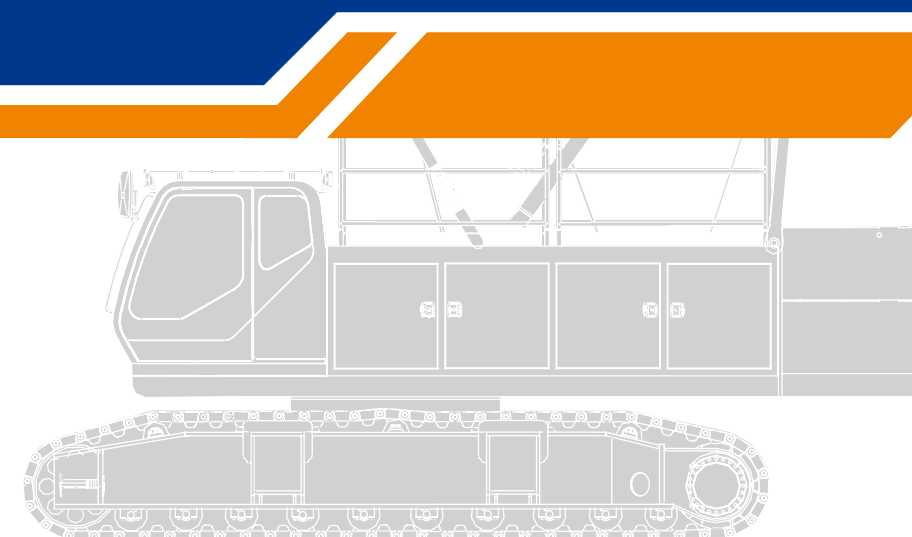


Vision creates future

Profession Heavy-industry Science & technology



# Crawler Crane Maintenance and Service Manual



Zoomlion Heavy Industry Science and Technology Co., Ltd.

Add: Quantang Industrial Park, 2nd Yuanda Road, Changsha  
Economic and Technological Development Zone, Hunan Province, China  
PC:410131  
Service-hotline:400-800-1680  
Fax:0086-0731-85585850  
E-mail:sc@zoomlion.com  
Website:www.zoomlion.com

**Zoomlion Heavy Industry Science &Technology Co.,Ltd.**



**ZCC800H CRAWLER CRANE  
MAINTENANCE AND SERVICE  
MANUAL**

The 1<sup>st</sup> edition (April, 2013)



---

## For you

Our respectable users, thank you very much for choosing ZOOMLION crawler crane. Before operating the crane, read these operating instructions carefully.

Regular inspection, maintenance and service of crane are very important to make full use of crane performance, ensure crane safe operation and extend the service life of crane. Therefore, we offer you this Maintenance & service manual to facilitate your inspection, maintenance and service work.

This manual details the inspection, maintenance and service work to ZOOMLION crawler crane, and lists some common problem occurred and their solutions.

For safety's sake, do not maintain the crane before you fully understand the contents in this manual, operating manual and other technical documents. If there is anything in this manual you do not understand, please contact local service engineer of Zoomlion, and they will provide you efficient technical support in time. Any risks associated with unspecified and improper use are the sole responsibility of the crane's owner, operator or user.

Unauthorized person is not allowed to dismantle or adjust the hydraulic elements during maintenance. When the hydraulic system of crane fails or the components are damaged, please contact local service engineer of Zoomlion.

Our products and technical documents are subject to technical improvements and changes without notice. Therefore, please acquaint yourself with our updated technology information. If there are differences between illustration and product, refer to the product. If there is any question, please contact the local service engineer of Zoomlion.

**Special information**

The following symbols appear in this manual:



Indicate an imminent threat or danger, which could lead to life-threatening or fatal injury of one or more persons.



Indicate a danger, which could lead to serious injury of one or more persons.



Indicate a potential danger, which could lead to slight or minor injury of one or more persons.



Indicate a danger which could lead to severe damage to the machine or other assets.



Indicate a tip or hint in the machine operating instructions.



Emphasize the importance of the information in operating instructions.



Is located wherever an action that could create a dangerous situation is prohibited.

**Contents**

<b>For you</b> .....	I
<b>Special information</b> .....	II
<b>Chapter 1 About this manual</b> .....	01-1
1.1 General .....	01-1
1.2 Product identification .....	01-1
1.3 Illustration and symbols .....	01-2
1.4 Hazard indicator .....	01-2
<b>Chapter 2 Safety instructions</b> .....	02-1
2.1 Safety guidelines .....	02-1
2.2 Environmental protection disposal.....	02-2
<b>Chapter 3 Description of the crane</b> .....	03-1
3.1 Description of main components .....	03-1
3.2 Hydraulic system .....	03-3
3.3 Electrical system.....	03-5
<b>Chapter 4 Maintenance and service</b> .....	04-1
4.1 General .....	04-1
4.2 Precautions.....	04-1
4.3 Cycle description .....	04-5
4.4 Maintenance plan .....	04-6
4.5 Maintenance of the power system.....	04-9
4.6 Maintenance of the reducer.....	04-15
4.7 Maintenance of the slewing ring .....	04-19
4.8 Maintenance of the crawler travel .....	04-20
4.9 Maintenance of hydraulic system .....	04-22

4.10 Maintenance of the electrical system .....	04-29
4.11 Maintenance of hooks and pulleys .....	04-33
4.12 Maintenance of wire ropes .....	04-36
4.13 Maintenance of air conditioning equipment.....	04-40
4.14 Maintenance of the lubricating system .....	04-41
4.15 Appearance inspection for structure components .....	04-45
<b>Chapter 5 Troubleshooting .....</b>	<b>05-1</b>
5.1 Troubleshooting of mechanical drive.....	05-1
5.2 Troubleshooting of power system.....	05-1
5.3 Troubleshooting of hydraulic system .....	05-4
5.4 Troubleshooting of electrical system .....	05-7
5.5 Troubleshooting of air conditioning system .....	05-11
<b>Chapter 6 Application of oil.....</b>	<b>06-1</b>
6.1 Antifreeze coolant .....	06-1
6.2 Lubricating oil .....	06-1
6.3 Diesel oil .....	06-2
6.4 Gear oil of reducer.....	06-3
6.5 Hydraulic oil .....	06-3
6.6 Lubricating grease .....	06-5
<b>Chapter 7 Appendix .....</b>	<b>07-1</b>
7.1 Tightening torque of threaded parts.....	07-1
7.2 Tightening torque of thread parts at pipe orifices .....	07-2
7.3 Attached tools for maintenance .....	07-3
7.4 Checklist for periodic inspection .....	07-4



# **Maintenance and Service Manual for Crawler Crane**

## **Chapter 1 About this manual**







## 1.1 General

This manual is compiled for crane maintenance personnel to carry out daily maintenance and periodic service. Read and understand the content in this manual before crane maintenance and service work.

Perform the crane maintenance and service work in accordance with the requirements

stipulated in this manual, especially the information about , 

and .

This manual does not include all requirements for maintenance and service. They are only for reference to help maintenance personnel to do the work. It is no substitute for official training.

This manual is compiled according to the working status of crane. However, it may be different from the actual status of crane due to technical improvements. Therefore, you can contact us if you want to know about more accurate information about the crane.

## 1.2 Product identification

The crane name plate is located in a prominent position at the outside of cab. The following figure shows the detail position of name plate.

The user can distinguish this crane from the other via the name plate. The information on it is helpful for crane maintenance and service. Please keep it in a good condition within the service life of crane.

The serial number on the name plate is for crane identification. The users can confirm the crane components and relevant technical data by this serial number. The serial number of this crane shown in the following figure is ZCC80-0001.

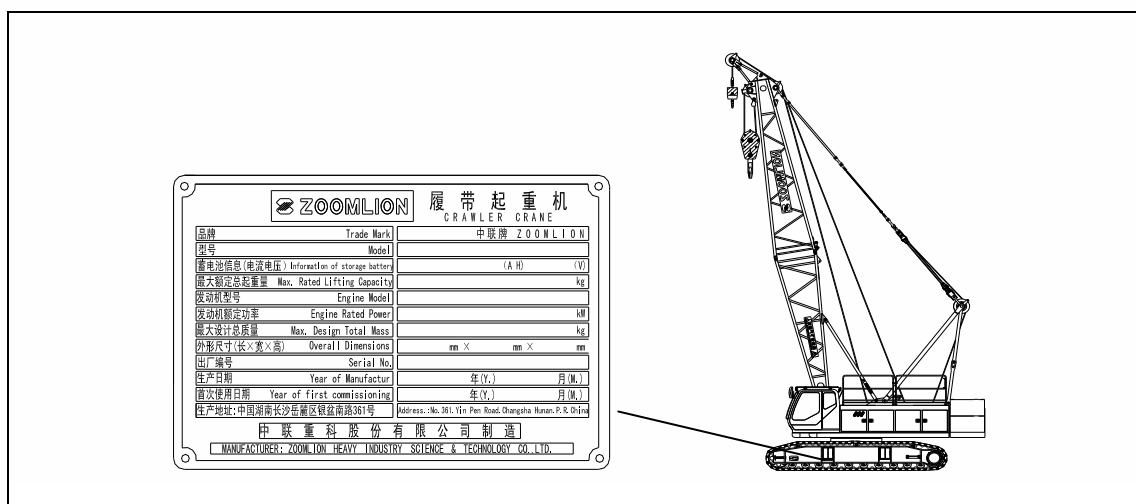


Fig. × 1-001 Position of name plate