

Lull®

Illustrated Parts Manual

Model
844

10709910

February 2000

ANSI

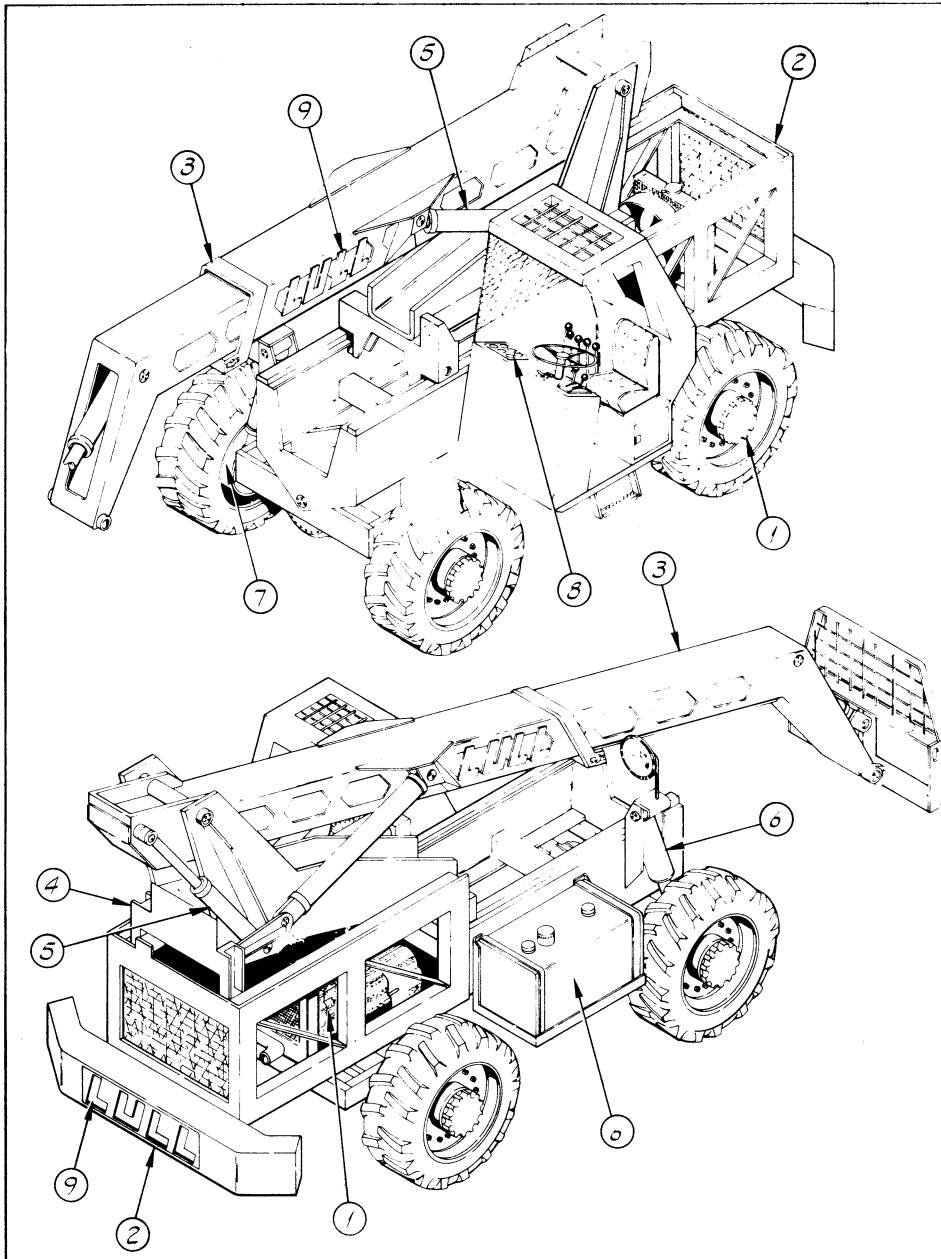
JLG®
An Oshkosh Corporation Company

Copyright © 1998,2000 Lull International, Inc. All rights reserved.

No part of this publication may be reproduced, stored in a retrieval system, or transmitted in any form or by any means (electronic, mechanical, recording, photocopy, or otherwise) without prior written permission from the copyright holder.

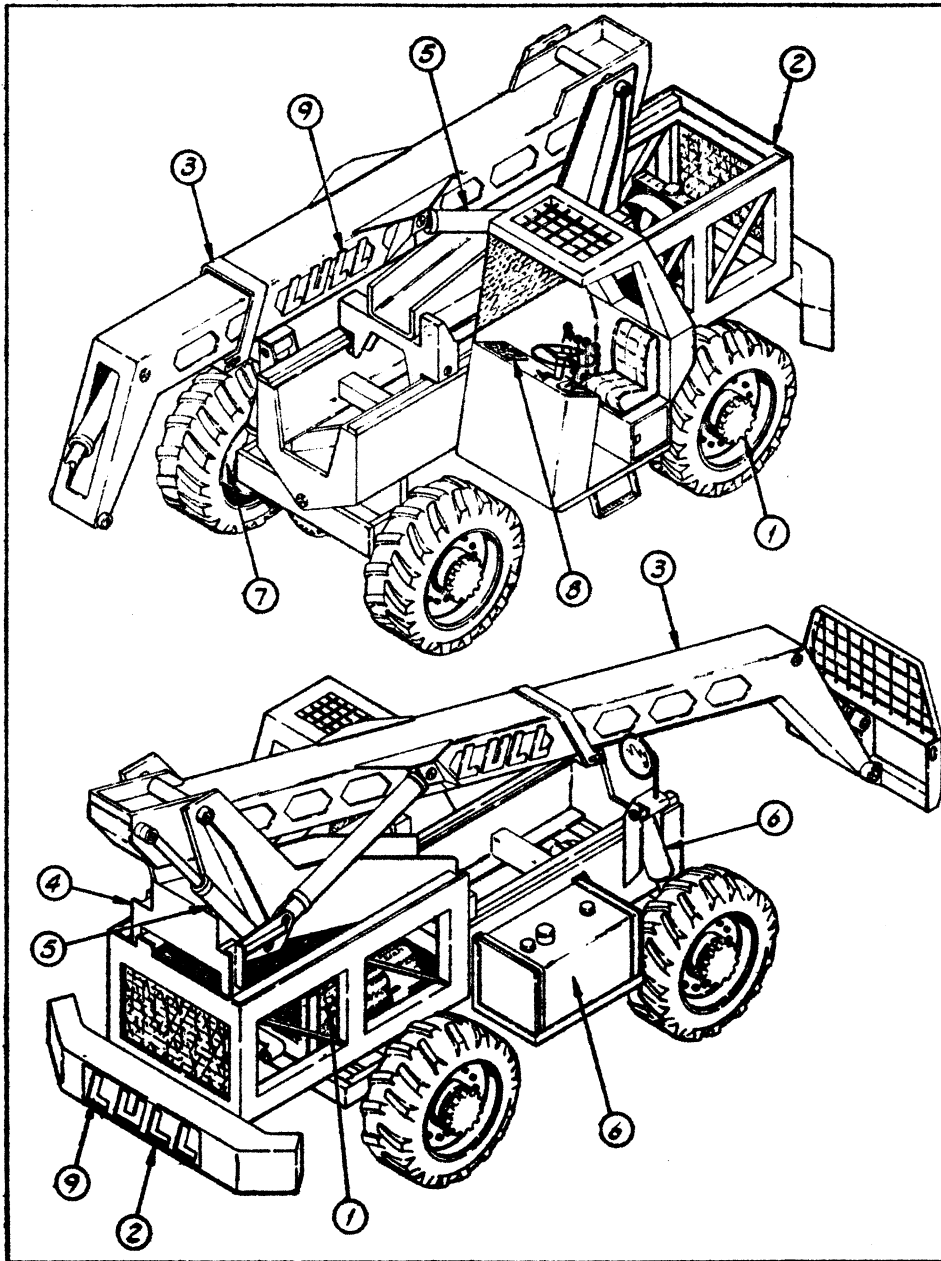
Publication Number 10709910
Compiled Edition 02/00

		318 Chrysler 276 John Deere 159 Detroit (3-53) 212 Detroit (4-53) 287 Deutz 283 Waukesha						MODEL 844 MISCELLANEOUS FILTERS	
PART NUMBERS								FILTERS	REMARKS
P12089	X							Oil Filter	Spin-On Element
P19513						X		Oil Filter	
P19848					X			Oil Filter	
P22640			X					Oil Filter	
P19535			X					Oil Filter	
P19287				X				Oil Filter	
P22635	X							Oil Filter	
P15267	X							Fuel Filter	Spin-On Spin-On Element Element
P17316						X		Fuel Filter	
P19856					X			Fuel Filter	
P22641			X					Fuel Filter-Primary	
P22642			X					Fuel Filter-Secondary	
P19288			X					Fuel Filter-Primary	
P19289			X	X				Fuel Filter-Secondary	
P22636	X							Fuel Filter	
P17276	X						X	Air Filter	For Machine W/Single Filter Air Cleaner For Machine W/Dual Filter Air Cleaner For Machine W/Dual Filter Air Cleaner
P19476			X	X	X			Air Filter	
P12179		X						Air Filter	
P21498		X						Air Filter-Primary	
P21499		X						Air Filter-Safety	
P19133	X	X	X	X	X	X		Transmission	Spin-On Element Spin-On Element Element, Tank Mounted (S/N 991 THRU)
P17815	X					X		Transmission	
P19801	X	X	X	X	X	X		Hydraulic Oil	
P13586	X		X	X		X		Hydraulic Oil	
P24315		X	X		X			Hydraulic Oil	




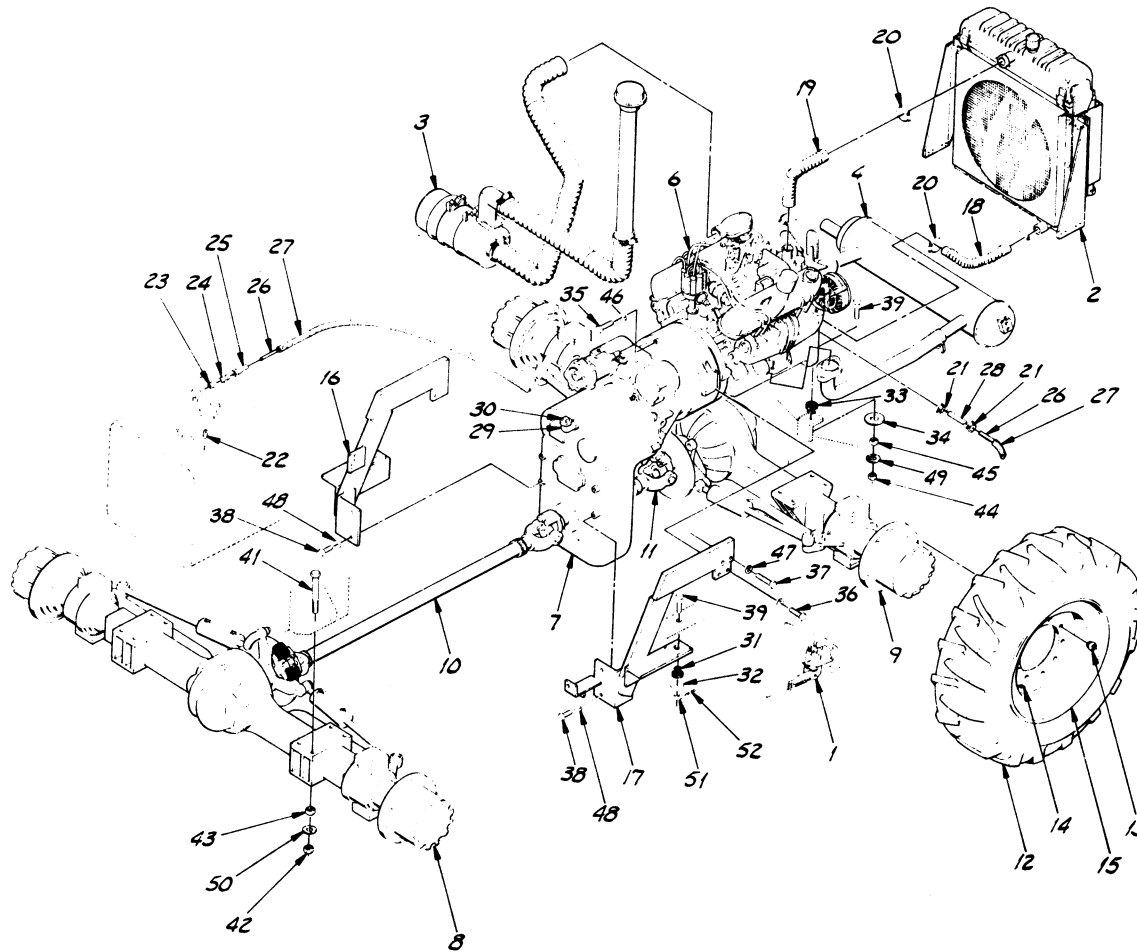
ITEM NO.	ASSEMBLY NUMBERS		DESCRIPTION
	CHRYSLER	WAUKESHA	
1	16801	16802	DRIVE TRAIN ASSEMBLY
	16818	16819	THROTTLE ASSEMBLY
	16822	16823	RADIATOR & TRANS. COOLER ASS'Y
	16826	16827	AIR CLEANER ASSEMBLY
	16830	16831	EXHAUST ASSEMBLY
2	16833	16833	TRANSMISSION DISCONNECT ASS'Y
	16805	16805	MAIN FRAME ASSEMBLY
	16834	16834	OPERATORS PLATFORM ASSEMBLY
	16835	16835	INSTRUMENT PANEL ASSEMBLY
3	16806	16806	TELESCOPIC BOOM ASSEMBLY
4	16807	16807	TRANSFER CARRIAGE ASSEMBLY
5	16808	16808	UPPER HYDRAULIC ASSEMBLY
	16837	16837	HOIST CYLINDER ASSEMBLY
	16838	16838	BOOM EXTENSION CYLINDER ASS'Y
	16839	16839	FRONT CARRIAGE TILT CYL. ASS'Y
	16840	16840	CARRIAGE TILT CYLINDER ASS'Y
6	16809	16809	LOWER HYDRAULIC ASSEMBLY
	16841	16841	HYDRAULIC STEERING ASSEMBLY
	16842	16842	JOYSTICK CONTROL ASSEMBLY
	16843	16843	FOUR SPOOL CONTROL HANDLE ASS'Y
	16844	16844	FRAME TILT CYLINDER ASSEMBLY
	16845	16845	TRANSFER CYLINDER ASSEMBLY
7	16810	16810	BRAKE ASSEMBLY
8	16811	16812	WIRING HARNESS ASSEMBLY
	16846	16847	WIRING DIAGRAM
9	16815	16815	DECAL LOCATION ASSEMBLY
10	16816	16816	LUBRICATION SCHEDULE
APPENDIX	16850	16850	50" STANDARD CARRIAGE ASSEMBLY
			MACHINE OPTIONS
			AXLE BREAKDOWN
			TRANSMISSION BREAKDOWN
			ENGINE BREAKDOWN

LULL
 ST. PAUL, MINNESOTA 55121
 J. DAUB CHRYSLER & WAUKESHA
 FINAL ASSEMBLY MODEL 844
 SCALE D
 DRAWING NO. 16800



1/2	ASSEMBLY NUMBERS			DESCRIPTION
	DEERE	DEUTZ	DETROIT	
1	16802	16803	16804	DRIVE TRAIN ASSEMBLY
	16819	16820	16821	THROTTLE ASSEMBLY
	16823	—	16825	RADIATOR & TRANS. COOLER ASS'Y
	16827	16824	—	AIR SHROUD & TRANS. COOLER ASS'Y
	16831	16828	16829	AIR CLEANER ASSEMBLY
	16833	—	16832	EXHAUST ASSEMBLY
	16833	16833	16833	TRANSMISSION DISCONNECT ASS'Y
2	16805	16805	16805	MAIN FRAME ASSEMBLY
	16834	16834	16834	OPERATORS PLATFORM ASSEMBLY
	16835	16835	16835	INSTRUMENT PANEL ASSEMBLY
3	16806	16806	16806	TELESCOPIC BOOM ASSEMBLY
4	16807	16807	16807	TRANSFER CARRIAGE ASSEMBLY
5	16808	16808	16808	UPPER HYDRAULIC ASSEMBLY
	16837	16837	16837	HOIST CYLINDER ASSEMBLY
	16838	16838	16838	BOOM EXTENSION CYLINDER ASS'Y
	16839	16839	16839	FRONT CARRIAGE TILT CYL. ASS'Y
	16840	16840	16840	REAR CARRIAGE TILT CYLINDER ASS'Y
6	16809	16809	16809	LOWER HYDRAULIC ASSEMBLY
	16841	16841	16841	HYDRAULIC STEERING ASSEMBLY
	16842	16842	16842	JOYSTICK CONTROL ASSEMBLY
	16843	16843	16843	FOUR SPOOL CONTROL HANDLE ASS'Y
	16844	16844	16844	FRAME TILT CYLINDER ASSEMBLY
	16845	16845	16845	TRANSFER CYLINDER ASSEMBLY
7	16810	16810	16810	BRAKE ASSEMBLY
8	16812	16813	16814	WIRING HARNESS ASSEMBLY
	16847	16848	16849	WIRING DIAGRAM
9	16815	16815	16815	DECAL LOCATION ASSEMBLY
10	16816	16816	16816	LUBRICATION SCHEDULE
APPENDIX				FORK CARRIAGE ASSEMBLY
				MACHINE OPTIONS
				AXLE BREAKDOWN
				TRANSMISSION BREAKDOWN
	16800-3	16800-4	16800-5	FINAL ASSEMBLY

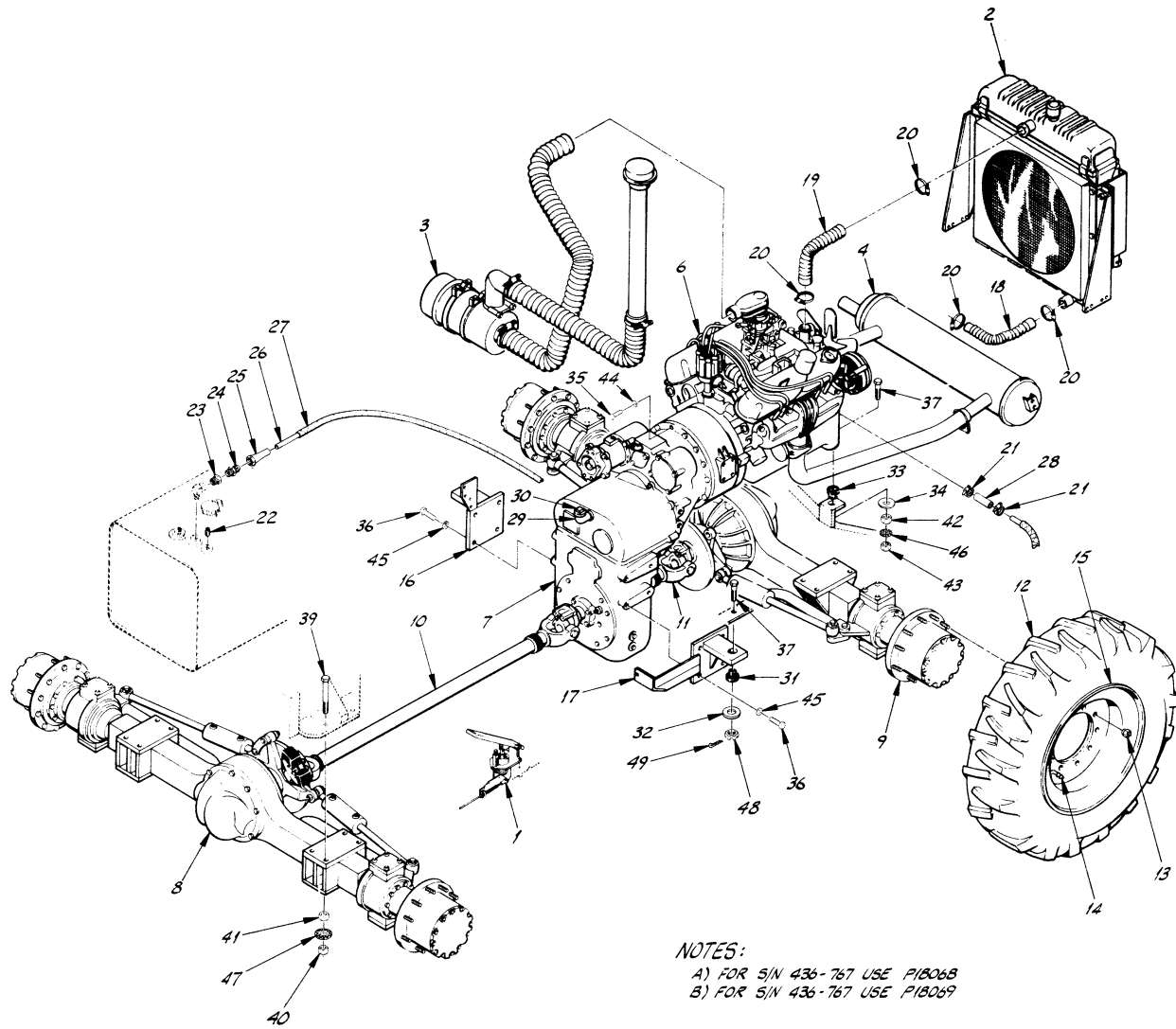
 Engineering Co., Inc.
 DEERE, DEUTZ & DETROIT
 FINAL ASSEMBLY
 MODEL 844
 SCALE 0
 16800-A



44	P11450	JAM NUT, HX 5/8-11 NC	1
43	P14225	NUT, HX 3/4-16 NF	16
42	P17662	JAM NUT, HX 3/4-16 NF	16
41	P17653	BOLT, HX 3/4-16 NF x 8	8
40	P17652	BOLT, HX 3/4-16 NF x 3	8
39	P17304	BOLT, HX 5/8-11 NC x 4 1/2	3
38	P17250	BOLT, HX 5/8-11 NC x 1 1/2	4
37	P17667	BOLT, HX 1/2-13 NC x 2	4
36	P17836	BOLT, HX 1/2-13 NC x 1 1/2	4
35	P15126	BOLT, HX 3/8-16 NC x 1 1/2	11
34	P20396	WASHER, ENGINE MT.	1
33	P18180	RUBBER MTG., ENGINE	1
32	P20395	WASHER, TRANS. MT.	2
31	P18181	RUBBER MTG., TRANS	2
30	P10730	PIPE PLUG	1
29	P10231	90° STREET ELBOW	1
28	P16547	RUBBER HOSE	A/R
27	P16725	ASBESTOS COVER	A/R
26	P4057	FUEL LINE, COPPER	A/R
25	P15311	FLARED NUT	1
24	P15409	CONNECTOR, MALE	1
23	P10691	REDUCER BUSHING	1
22	P10554	PLUG, FUEL TANK	1
21	P13613	HOSE CLAMP	2
20	P10601	HOSE CLAMP	4
19	P17682	HOSE, UPPER RAD.	1
18	P17681	HOSE, LOWER RAD.	1
17	15521C	TRANS. SUPP'T. L.H.	1
16	15520C	TRANS. SUPP'T. R.H.	1
15	12749C	WHEEL WELDMENT	4
14	P13673	VALVE STEM	4
13	P13894	WHEEL NUT	40
12	P11688	TIRE, 13.00-24, 8 PLY	4
11	P17902	DRIVE SHAFT, REAR	1
10	P17901	DRIVE SHAFT, FRONT	1
9	P18069	AXLE, REAR	1
8	P18068	AXLE, FRONT	1
7	P18812	TRANSMISSION, FUNK	1
6	P17576	ENGINE, 318 CHRYSLER	1
5	16833	TRANS. DISCONN. ASS'Y	1
4	16830	EXHAUST ASSEMBLY	1
3	16826	AIR CLEANER ASS'Y	1
2	16822	RADIATOR ASSEMBLY	1
1	16818	THROTTLE ASSEMBLY	1

52	COM'L	COTTER PIN 1/8 x 1	2
51	COM'L	NUT, CASTELATED 5/8-11	2
50	COM'L	STARWASHER, 3/4	16
49	COM'L	STARWASHER, 5/8	1
48	COM'L	LOCKWASHER, 5/8	4
47	COM'L	LOCKWASHER, 1/2	8
46	COM'L	LOCKWASHER, 3/8	11
45	P14223	NUT, HX 5/8-11 NC	1

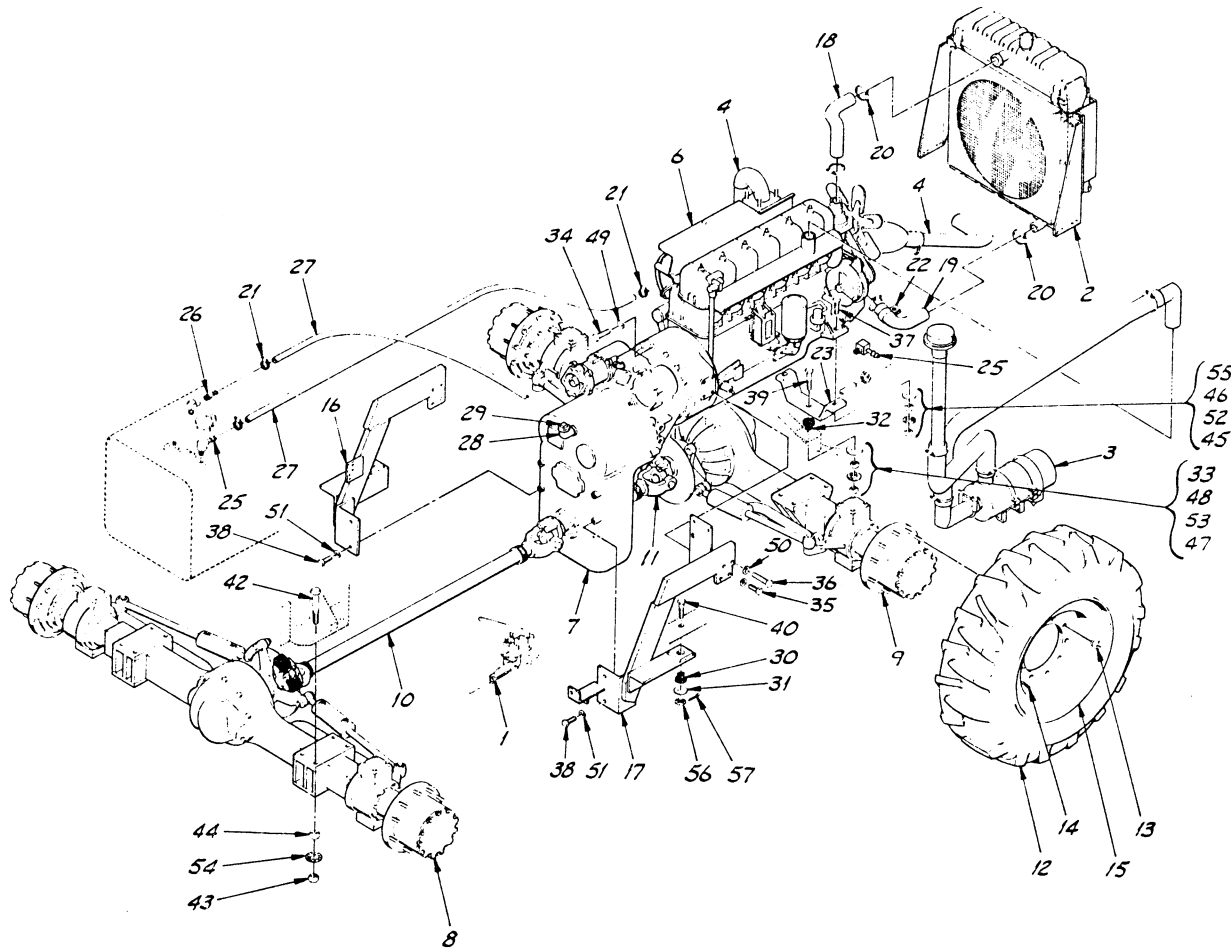
ITEM		PART NO.	DESCRIPTION	REQ.
LULL Engineering Co., Inc. ST. PAUL, MINNESOTA 55121				
DRAWN BY		J DAUB	S/N 101-442 + 626-661	
DRAWING TITLE		DRIVE TRAIN ASSEMBLY		CHRYSLER
				SCALE C
		MODEL 844		DRAWING NO. 16801



NOTES:
 A) FOR S/N 436-767 USE P18068
 B) FOR S/N 436-767 USE P18069

ITEM	PART	DESCRIPTION	REQ.
50	16833	TRANS DISCONNECT	REF
49	COM'L	COTTER PIN 1/8" x 1"	2
48	COM'L	CASTLE NUT, HX. 3/8"-18	2
47	COM'L	STARWASHER, 3/4"	16
46	COM'L	STARWASHER, 5/8"	1
45	COM'L	LOCKWASHER, 1/2"	8
44	COM'L	LOCKWASHER, 3/8"	11
43	P17665	NUT, HX. 3/8"-18 NF	1
42	P16793	JAM NUT, HX. 3/8"-18 NF	1
41	P14225	NUT, HX. 3/4"-16 NF	16
40	P17662	JAM NUT, HX. 3/4"-16 NF	16
39	P17653	BOLT, HX. 3/4"-16 NF x 3"	8
38	P17652	BOLT, HX. 3/4"-16 NF x 3"	8
37	P17304	BOLT, HX. 3/8"-18 NF x 4 1/2"	3
36	P17830	BOLT, HX. 3/4"-10 NC x 1 1/2"	8
35	P15126	BOLT, HX. 3/8"-16 NC x 1 1/2"	11
34	P20396	WASHER, ENGINE MT.	1
33	P18180	RUBBER MTG., ENG.	1
32	P20395	WASHER, TRANS. MT.	2
31	P18181	RUBBER MTG., TRANS.	2
30	P10730	PIPE PLUG	1
29	P10231	90° STREET ELBOW	1
28	P16347	RUBBER HOSE	3"
27	P16725	LOOM, FUEL LINE	110"
26	P14057	FUEL LINE, COPPER	112"
25	P15311	FLARED NUT	1
24	P15409	MALE CONNECTOR	1
23	P10691	REDUCER BUSHING	1
22	P10354	PLUG, FUEL TANK	1
21	P13613	HOSE CLAMP	2
20	P10601	HOSE CLAMP	4
19	P17682	HOSE, UPPER RAD.	1
18	P17681	HOSE, LOWER RAD.	1
17	17116C	TRANS SUPP'T., L.H.	1
16	17115C	TRANS SUPP'T., R.H.	1
15	12749C	WHEEL WELDMENT	4
14	P13673	VALVE STEM	4
13	P13894	WHEEL NUT	40
12	P1688	TIRE, 13.00-24, 8 PLY	4
11	P20972	DRIVE SHAFT, REAR	1
10	P20971	DRIVE SHAFT, FRONT	1
9	P21736	AXLE, REAR	1
8	P21735	AXLE, FRONT	1
7	P20834	TRANSMISSION	1
6	P17576	ENGINE, 318 CHRYSL.	REF
4	16830	EXHAUST ASSEMBLY	REF
3	16826	AIR CLEANER ASS'Y	REF
2	16822	RADIATOR ASSEMBLY	REF
1	16818	THROTTLE ASSEMBLY	REF

LULL		ST. PAUL, MINNESOTA 55121	
DRAWN BY J. DAUB		DWG. 430-025, 002 THRU	
DRAWING TITLE		CHRYSL.	
DRIVE TRAIN ASSEMBLY		SCALE D	
MODEL 844		DRAWING NO. 16801-1	



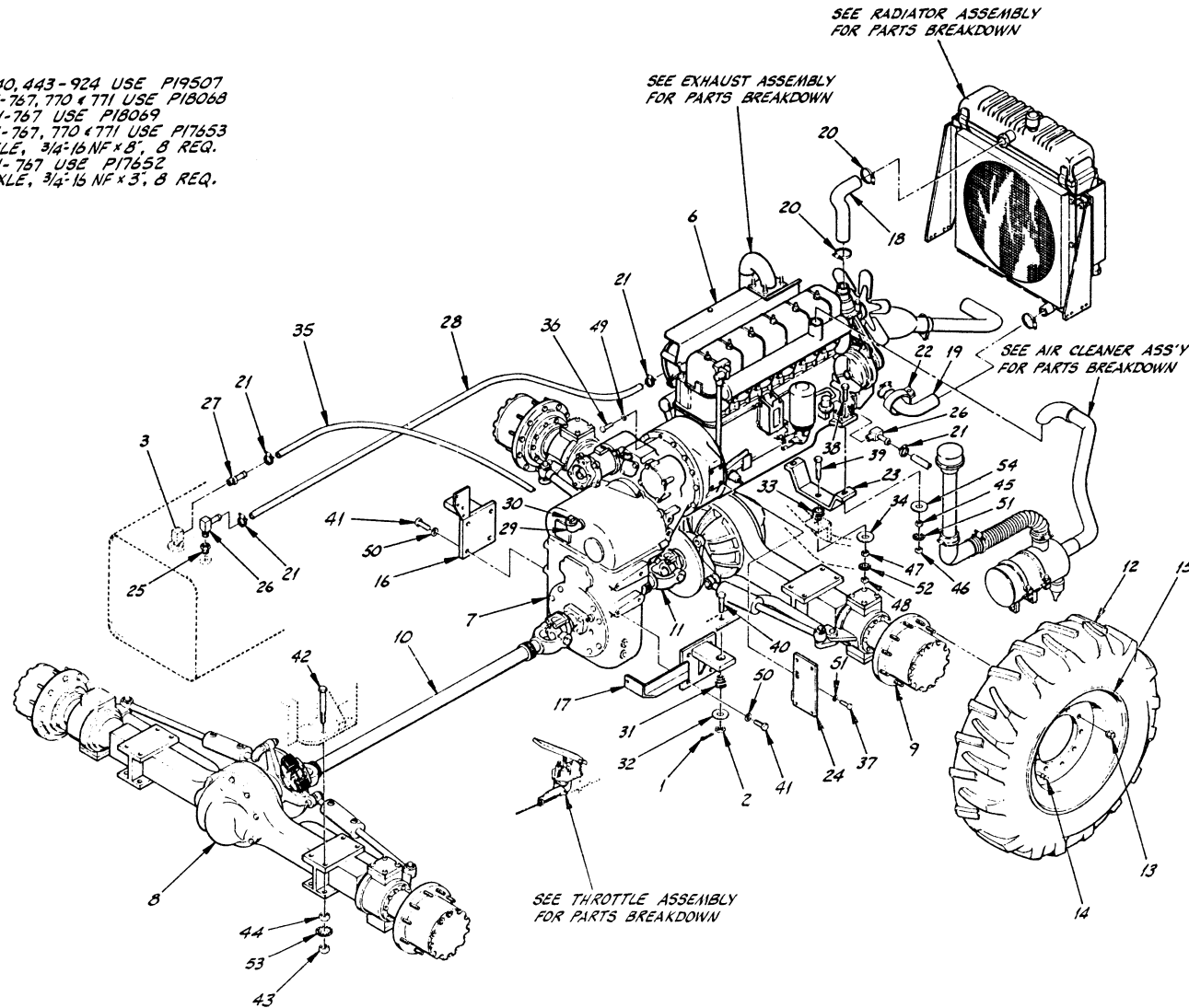
44	P14225	NUT, HX 3/4-16 NF	16
43	P17662	JAM NUT, HX 3/4-16 NF	16
42	P17653	BOLT, HX 3/4-16 NF x 8	8
41	P17652	BOLT, HX 3/4-16 NF x 3	8
40	P17304	BOLT, HX 5/8-11 NC x 4 1/2	2
39	P17795	BOLT, HX 5/8-11 NC x 3 1/2	1
38	P17250	BOLT, HX 5/8-11 NC x 1 1/2	4
37	P18024	BOLT, HX 1/2-13 NC x 2 3/4	2
36	P17667	BOLT, HX 1/2-13 NC x 2	4
35	P17836	BOLT, HX 1/2-13 NC x 1 1/2	4
34	P15126	BOLT, HX 3/8-16 NC x 1 1/2	11
33	P20396	WASHER, ENG. NE MT.	1
32	P18180	RUBBER MTG., ENGINE	1
31	P20395	WASHER, TRANS. MT.	2
30	P18181	RUBBER MTG., TRANS.	2
29	P10730	PIPE PLUG	1
28	P10231	90° STREET ELBOW	1
27	P17210	HOSE, FUEL LINE	1
26	P13619	CONNECTOR	1
25	P21317	90° ELBOW	2
24	P10692	REDUCER BUSHING	1
23	155888	MOTER MOUNT	1
22	153108	HOSE HOLDER, GUARD	1
21	P13613	HOSE CLAMP	4
20	P10601	HOSE CLAMP	4
19	P17682	HOSE, LOWER RAD.	1
18	P17921	HOSE, UPPER RAD.	1
17	155210	TRANS. SUPPORT, L.H	1
16	155200	TRANS. SUPPORT, R.H	1
15	127490	WHEEL WELDMENT	4
14	P13673	VALVE STEM	4
13	P13894	WHEEL NUT	40
12	P11688	TIRE, 13.00-24, 8 PLY	4
11	P17902	DRIVE SHAFT, REAR	1
10	P17901	DRIVE SHAFT, FRONT	1
9	P18069	AXLE, REAR	1
8	P18068	AXLE, FRONT	1
7	P17829	TRANSMISSION	1
6	P17743	ENGINE, 283 WAUK	1
5	16833	TRANS. DISCONN. ASS'Y	1
4	16831	EXHAUST ASSEMBLY	1
3	16827	AIR CLEANER ASS'Y	1
2	16823	RADIATOR ASSEMBLY	1
1	16819	THROTTLE ASSEMBLY	1

57	COM'L	COTTER PIN, 1/8 x 1	2
56	COM'L	NUT, CASTELATED 5/8-NC	2
55	COM'L	FLATWASHER, 1/2	4
54	COM'L	STARWASHER, 3/4	16
53	COM'L	STARWASHER, 5/8	1
52	COM'L	STARWASHER, 1/2	2
51	COM'L	LOCKWASHER, 5/8	4
50	COM'L	LOCKWASHER, 1/2	8
49	COM'L	LOCKWASHER, 3/8	11
48	P14223	NUT, HX 5/8-11 NC	1
47	P11450	JAM NUT, HX 5/8-11 NC	1
46	P17671	NUT, HX 1/2-13 NC	3
45	P17661	JAM NUT, HX 1/2-13 NC	3

ITEM	PART NO.	DESCRIPTION	REQ.
LULL Engineering Co., Inc. ST. PAUL, MINNESOTA 55121			
DRAWN BY		S/N 101-439, 441 & 442	
DRAWING TITLE		WAUK.	
DRIVE TRAIN		SCALE C	
ASSEMBLY		DRAWING NO.	
MODEL 844		16802	

NOTES:

- A) FOR S/N 440, 443-924 USE P19507
 B) FOR S/N 101-767, 770 & 771 USE P18068
 C) FOR S/N 101-767 USE P18069
 D) FOR S/N 101-767, 770 & 771 USE P17653
 ON FRONT AXLE, 3/4"-16 NF x 8", 8 REQ.
 FOR S/N 101-767 USE P17652
 ON REAR AXLE, 3/4"-16 NF x 3", 8 REQ.



54	COM'L	FLATWASHER, 1/2"	4
53	COM'L	STARWASHER, 3/8"	16
52	COM'L	STARWASHER, 3/8"	1
51	COM'L	STARWASHER, 1/2"	4
50	COM'L	LOCKWASHER, 3/4"	8
49	COM'L	LOCKWASHER, 3/8"	11
48	P17665	NUT, HX 3/8-13	1
47	P16793	JAM NUT, HX 3/8-13	1
46	P17671	NUT, HX 1/2-13	3
45	P17661	JAM NUT, HX 1/2-13	3
44	P14225	NUT, HX 3/4-16	16
43	P17662	JAM NUT, 1/4-16	16
42	P17504	BOLT, HX 3/4-16 NF x 7"	10
41	P17830	BOLT, HX 3/4-10 NC x 1 1/2	8
40	P17304	BOLT, HX 3/8-18 NF x 4 1/2	2
39	P17670	BOLT, HX 3/8-18 NF x 3"	1
38	P18024	BOLT, HX 1/2-13 NC x 2 1/4	2
37	P17666	BOLT, HX 1/2-13 NC x 1 1/4	2
36	P15126	BOLT, HX 3/8-16 NC x 1 1/2	11
35	N11439	HOSE, RETURN LINE, 3/4"	1
34	P20396	WASHER, ENGINE MT.	1
33	P18180	RUBBER MTG., ENG.	1
32	P20395	WASHER, TRANS. MT.	2
31	P18181	RUBBER MTG., TRANS.	2
30	P10730	PIPE FLUG	1
29	P10231	90° STREET ELBOW	1
28	N11432	HOSE, FUEL LINE, 1/4"	1
27	P13619	CONNECTOR	1
26	P21317	90° ELBOW	2
25	P10690	REDUCER BUSHING	1
24	171198	FUEL INJECTOR BRKT	1
23	153888	MOTOR MOUNT	1
22	153108	HOSE HOLDER, GUARD	1
21	P18613	HOSE CLAMP	4
20	P10601	HOSE CLAMP	4
19	P17682	HOSE, LOWER RAD.	1
18	P17921	HOSE, UPPER RAD.	1
17	171160	TRANS. SUPPORT, L.H.	1
16	171150	TRANS. SUPPORT, R.H.	1
15	127490	WHEEL (RIM)	4
14	P13673	VALVE STEM	4
13	P13894	WHEEL NUT	40
12	P11688	TIRE, 13.00-24, 8 PLY	4
11	P20972	DRIVE SHAFT, REAR	1
10	P20971	DRIVE SHAFT, FRONT	1
9	P21736	AXLE, REAR	1
8	P21735	AXLE, FRONT	1
7	P22305	TRANSMISSION	1
6	P17743	ENGINE, 283 WAUKESHA	1
5			
4			
3	P25362	STAND TUBE	-
2	COM'L	CASTLE NUT, HX, 3/8-13"	2
1	COM'L	COTTER PIN, 1/8 x 1"	2

TRANSMISSION DISCONNECT ASSY
 SEE PARTS BREAKDOWN

WLL Engineering Co., Inc. ST. PAUL, MINNESOTA 56121

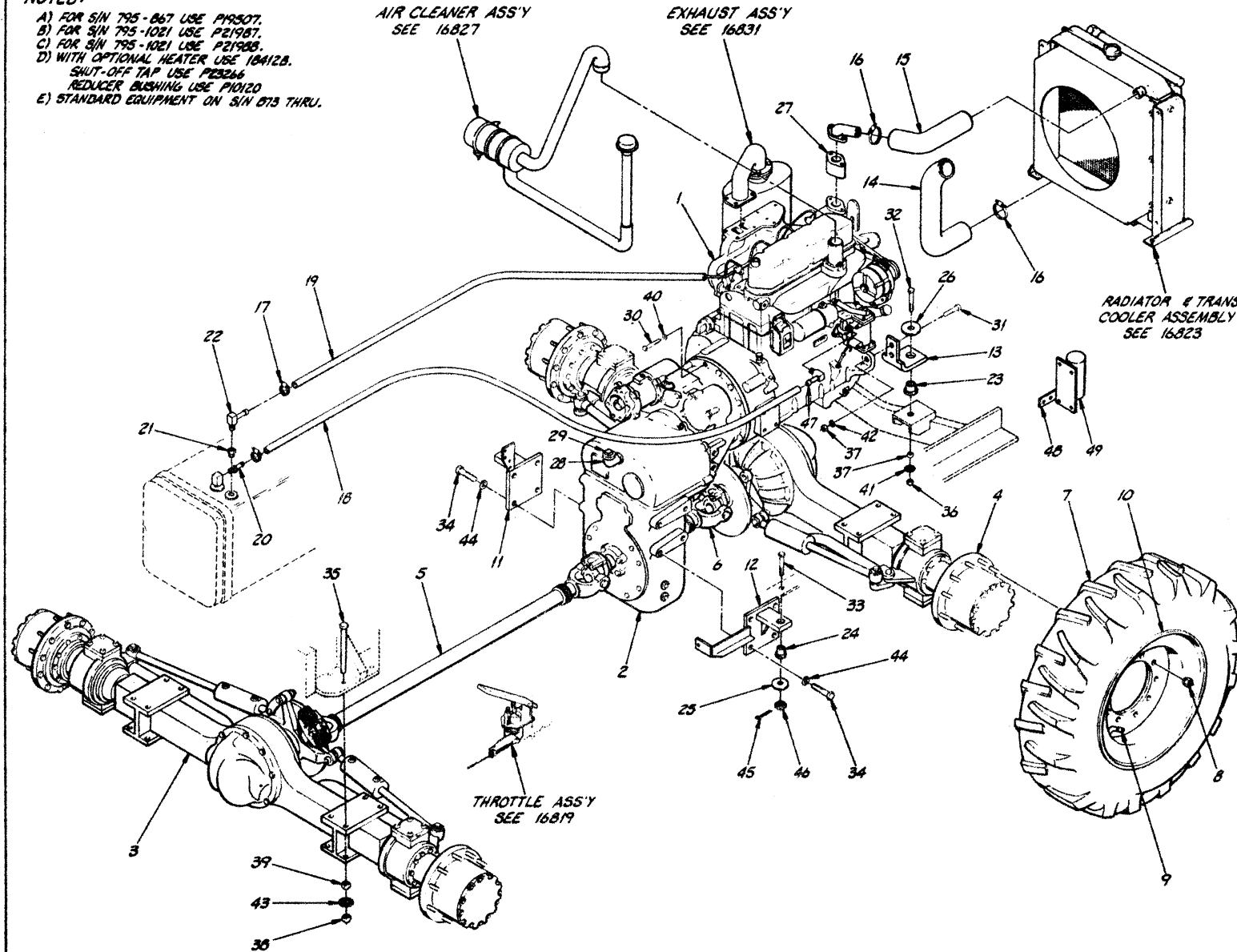
DRAWN BY J. DAVIS S/N 440, 443 THRU

DRIVE TRAIN ASSEMBLY MODEL 844

WAWK. SCALE D DRAWING NO. 16802-1

NOTES:

- A) FOR SIN 795-867 USE P19307.
- B) FOR SIN 795-1021 USE P21987.
- C) FOR SIN 795-1021 USE P21988.
- D) WITH OPTIONAL HEATER USE 10412B.
SHUT-OFF TAP USE P23266
REDUCER BUSHING USE P10120
- E) STANDARD EQUIPMENT ON SIN 873 THRU.



E)	49	P2422	QUICK START KIT	1
	48	16512A	BRACKET, QUICK START	1
	47	P21236	CONNECTOR	1
	46	COM'L	CASTLE NUT, HX. 3/8"-18	2
	45	COM'L	COTTER PIN, 1/8" x 1"	2
	44	COM'L	LOCKWASHER, 3/4"	2
	43	COM'L	STARWASHER, 3/4"	16
	42	COM'L	LOCKWASHER, 3/8"	4
	41	COM'L	STARWASHER, 3/8"	2
	40	COM'L	LOCKWASHER, 3/8"	11
	39	P4825	NUT, HX. 3/4"-16 NF	16
	38	P17662	JAM NUT, 3/4"-16 NF	16
	37	P17665	NUT, HX. 3/8"-18 NF	4
	36	P16793	JAM NUT, 3/8"-18 NF	4
	35	P17504	BOLT, HX. 3/8"-16 NF x 7"	2
	34	P17830	BOLT, HX. 3/8"-10 NC x 1 1/2"	8
	33	P17304	BOLT, HX. 3/8"-18 NF x 4 1/2"	2
	32	P17670	BOLT, HX. 3/8"-18 NF x 5"	4
	31	P17794	BOLT, HX. 3/8"-18 NF x 2"	2
	30	P15126	BOLT, HX. 3/8"-16 NC x 1 1/2"	11
	29	P10730	PIPE PLUG	1
	28	P10231	90° STREET ELBOW	1
D)	27	P21785	HOUSING EXTENSION	1
	26	P20396	SNUBBING WASHER	2
	25	P20395	SNUBBING WASHER	2
	24	P18181	RUBBER TRANS. MOUNT	2
	23	P18180	RUBBER ENGINE MOUNT	2
	22	P21317	90° ELBOW	2
	21	P10692	REDUCER BUSHING	1
	20	P13619	CONNECTOR	1
	19	P16347	HOSE, RETURN LINE	105
	18	P17210	HOSE, FUEL LINE	100
	17	P13613	HOSE CLAMP	4
	16	P10601	HOSE CLAMP	4
	15	P24298	HOSE, UPPER RAD.	1
	14	P24299	HOSE, LOWER RAD.	1
	13	10668B	MOTOR MOUNT	2
	12	17116C	TRANS SUPPORT, L.H.	1
	11	17115C	TRANS SUPPORT, R.H.	1
	10	12749C	RIM	4
	9	P16673	VALVE STEM	4
	8	P16674	LUG NUT	40
	7	P1668B	TIRE, 13-00-24, 8 PLY	4
C)	6	P20972	DRIVE SHAFT, REAR	1
	5	P20971	DRIVE SHAFT, FRONT	1
	4	P21736	AXLE, REAR	1
	3	P21735	AXLE, FRONT	1
B)	2	P22808	TRANSMISSION, FUNK	1
	1	P21985	ENGINE, 276 DEERE	1

ITEM	PART NO.	DESCRIPTION	QTY.
WILL <small>Engineering Co., Inc.</small> ST. PAUL, MINNESOTA 55121			
<small>MANUFACTURED BY</small> SIN 795 THRU			
<small>MEMBER TITLE</small> DRIVE TRAIN ASSEMBLY			DEERE
<small>MODEL</small> MODEL 844			<small>SCALE</small> D
			<small>MANUFACTURING NO.</small> 16802-2

NOTES:

- A) WITH OPTIONAL HEATER USE 184128.
 SHUT-OFF TAP USE P23266
 REDUCER BUSHING USE P10120

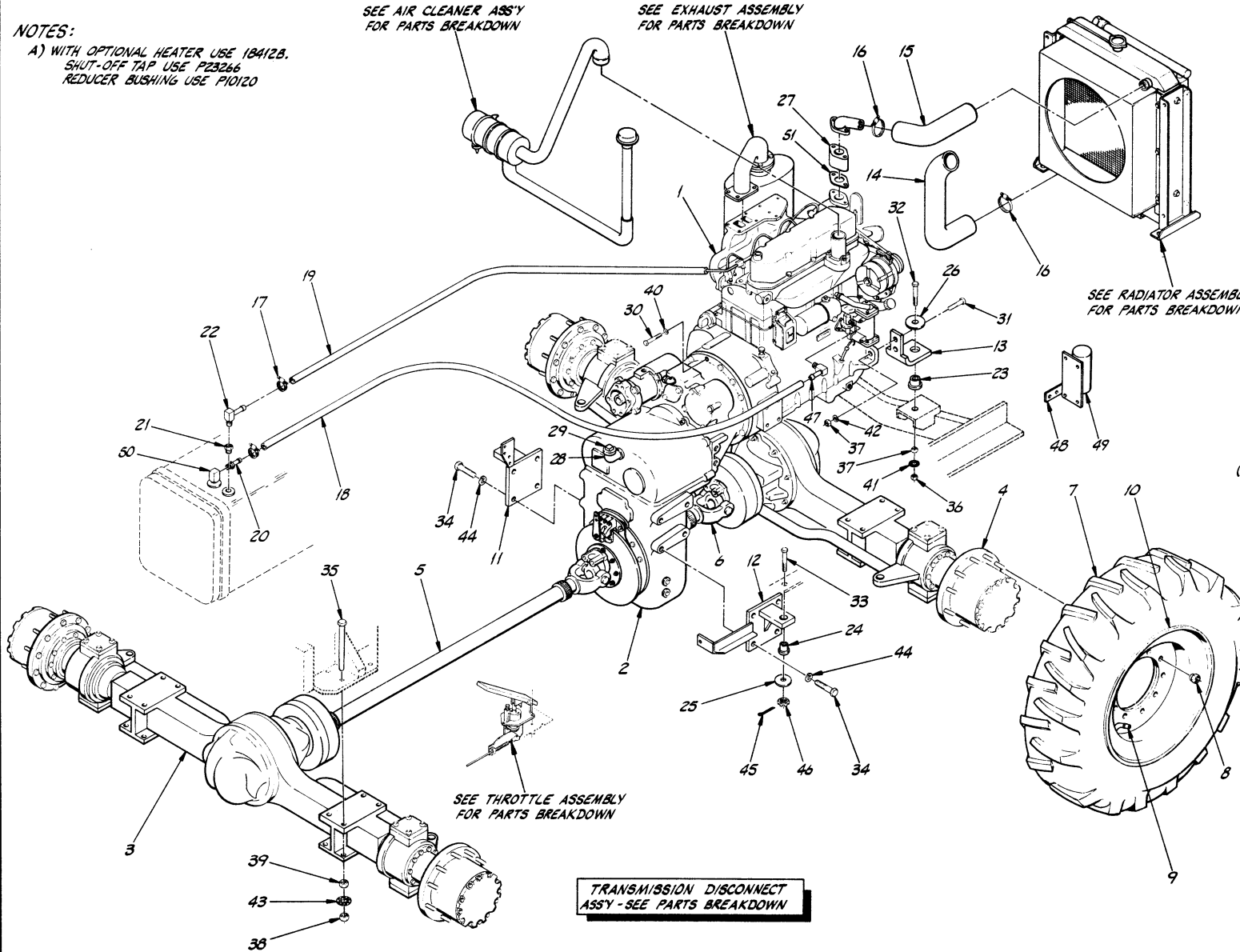
SEE AIR CLEANER ASS'Y
 FOR PARTS BREAKDOWN

SEE EXHAUST ASSEMBLY
 FOR PARTS BREAKDOWN

SEE RADIATOR ASSEMBLY
 FOR PARTS BREAKDOWN

SEE THROTTLE ASSEMBLY
 FOR PARTS BREAKDOWN

TRANSMISSION DISCONNECT
 ASSY - SEE PARTS BREAKDOWN



51	P25386	GASKET	-
50	P25362	STAND TUBE	1
49	P21422	QUICK START KIT	1
48	18512A	BRACKET, QUICK START	1
47	P21236	CONNECTOR	1
46	COM'L	CASTLE NUT, HX. 5/8"-18	2
45	COM'L	COTTER PIN, 1/8" x 1"	2
44	COM'L	LOCKWASHER, 3/4"	8
43	COM'L	STARWASHER, 3/4"	16
42	COM'L	LOCKWASHER, 5/8"	4
41	COM'L	STARWASHER, 5/8"	2
40	COM'L	LOCKWASHER, 3/8"	11
39	P14225	NUT, HX. 3/4"-16	16
38	P17662	JAM NUT, 3/8"-16	16
37	P17665	NUT, HX. 5/8"-18	4
36	P16793	JAM NUT, 5/8"-18	16
35	P17504	BOLT, HX. 3/4"-16 NF x 7"	2
34	P17830	BOLT, HX. 3/4"-10 NC x 1 1/2"	8
33	P17304	BOLT, HX. 5/8"-18 NF x 4 1/2"	2
32	P17670	BOLT, HX. 5/8"-18 NF x 3"	4
31	P17794	BOLT, HX. 5/8"-18 NF x 2"	2
30	P15126	BOLT, HX. 3/8"-16 NC x 1 1/2"	11
29	P10730	PIPE PLUG	1
28	P10231	90° STREET ELBOW	1
27	P21785	HOUSING EXTENSION	1
26	P20396	SNUBBING WASHER	2
25	P20395	SNUBBING WASHER	2
24	P18181	RUBBER TRANS. MOUNT	2
23	P18180	RUBBER ENGINE MOUNT	2
22	P21317	90° ELBOW	1
21	P10690	REDUCER BUSHING	1
20	P13619	CONNECTOR	1
19	N11433	HOSE, RETURN LINE, 1/4"	1
18	N11437	HOSE, FUEL LINE, 5/16"	1
17	P13613	HOSE CLAMP	4
16	P10601	HOSE CLAMP	4
15	P24298	HOSE, UPPER RAD.	1
14	P24299	HOSE, LOWER RAD.	1
13	18668B	MOTOR MOUNT	2
12	17116C	TRANS SUPPORT, L.H.	1
11	17115C	TRANS SUPPORT, R.H.	1
10	12749C	RIM	4
9	P13673	VALVE STEM	4
8	P13894	LUG NUT	40
7	P11688	TIRE, 13.00-24, 8 PLY	4
6	P24722	DRIVE SHAFT, REAR	1
5	P21779	DRIVE SHAFT, FRONT	1
4	P24800	AXLE, REAR	1
3	P24801	AXLE, FRONT	1
2	P24804	TRANSMISSION, FUNK	1
1	P21985	ENGINE, 276 DEERE	1

(A)

LULL Engineering Co., Inc.		ST. PAUL, MINNESOTA 55121
DESIGNED BY	S/N 1082 THRU	
DRAWN BY		
CHECKED BY		
DRAWING TITLE		DEERE
DRIVE TRAIN ASSEMBLY		SCALE D
MODEL 844		DRAWING NO. 16802-3

NOTES:

A) WITH OPTIONAL HEATER USE 18412B.

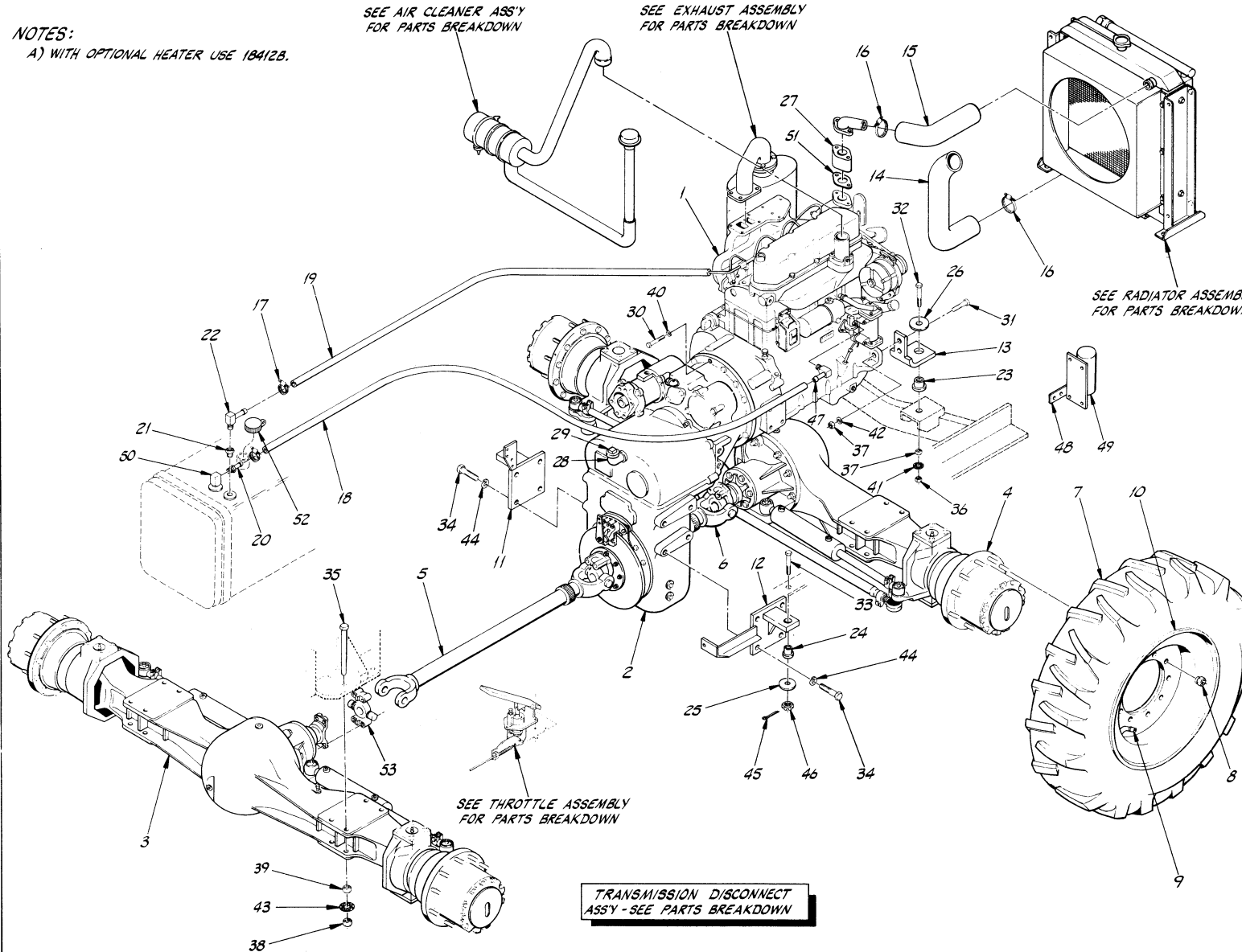
SEE AIR CLEANER ASS'Y
FOR PARTS BREAKDOWN

SEE EXHAUST ASSEMBLY
FOR PARTS BREAKDOWN

SEE RADIATOR ASSEMBLY
FOR PARTS BREAKDOWN

SEE THROTTLE ASSEMBLY
FOR PARTS BREAKDOWN

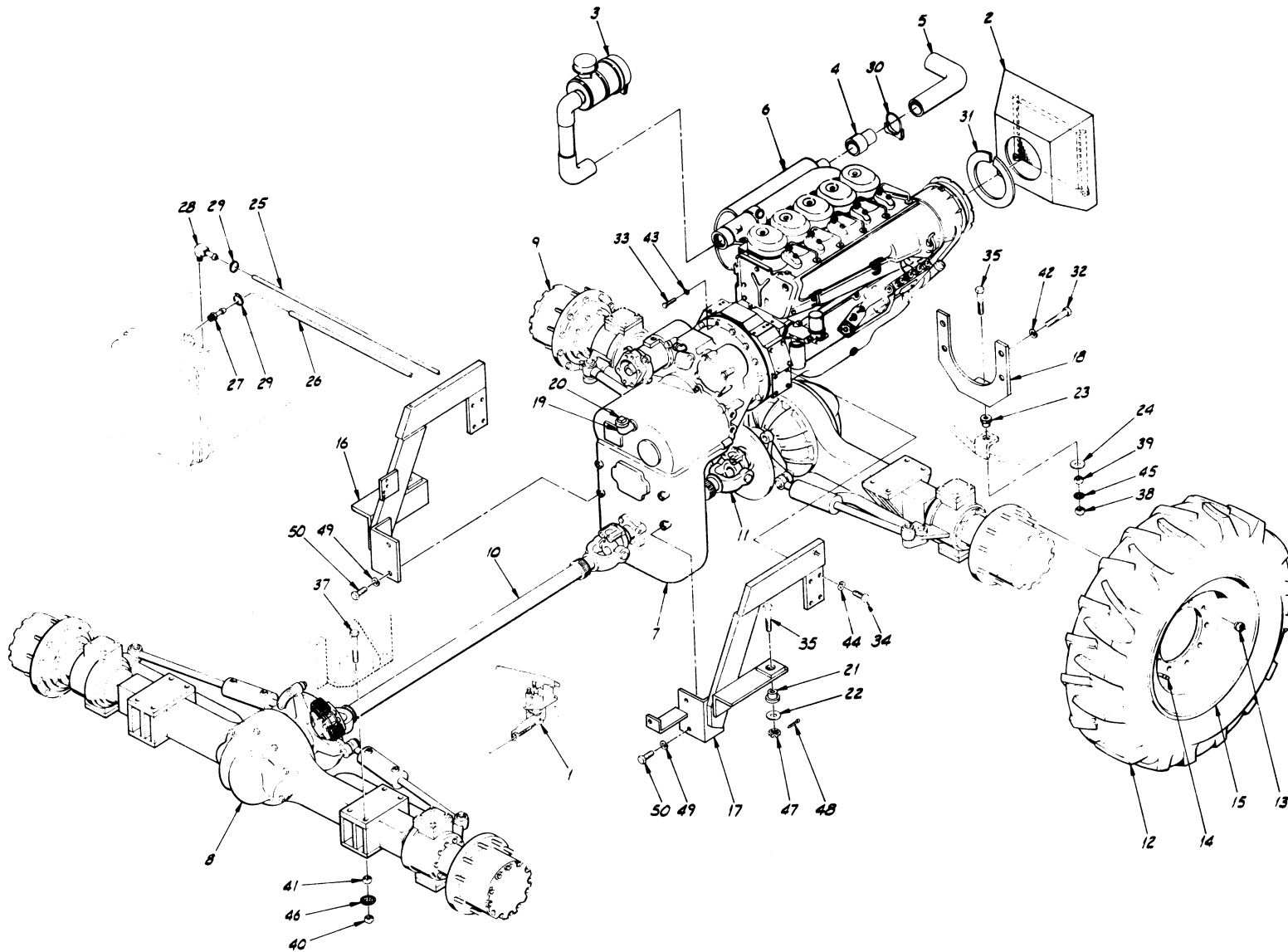
TRANSMISSION DISCONNECT
ASSY - SEE PARTS BREAKDOWN



53	P18749	CROSS & BEARING	-
52	P12182	FUEL CAP	-
51	P25386	GASKET	-
50	P25362	STAND TUBE	-
49	P21422	QUICK START KIT	1
48	18512A	BRACKET, QUICK START	1
47	P21236	CONNECTOR	1
46	P01635	CASTLE NUT, HX. 5/8-18	2
45	P03838	COTTER PIN, 1/8x1"	2
44	P01315	LOCKWASHER, 3/4"	8
43	P01364	STARWASHER, 3/4"	16
42	P01344	LOCKWASHER, 5/8"	4
41	P01363	STARWASHER, 5/8"	2
40	P01310	LOCKWASHER, 3/8"	11
39	P01536	NUT, HX. 3/4-16	16
38	P01586	JAM NUT, 3/4-16	16
37	P01535	NUT, HX. 5/8-18	4
36	P01585	JAM NUT, 5/8-18	2
35	P00791	BOLT, HX. 3/4-16 NFx7"	16
34	P00700	BOLT, HX. 3/4-10 NCx1 1/2"	8
33	P00663	BOLT, HX. 5/8-18 NFx4 1/2"	2
32	P00658	BOLT, HX. 5/8-18 NFx3"	4
31	P00654	BOLT, HX. 5/8-18 NFx2"	2
30	P00206	BOLT, HX. 3/8-16 NCx1 1/2"	11
29	P10730	PIPE PLUG	1
28	P10133	90° STREET ELBOW	1
27	P21785	HOUSING EXTENSION	1
26	P20396	SNUBBING WASHER	2
25	P20395	SNUBBING WASHER	2
24	P18181	RUBBER TRANS. MOUNT	2
23	P18180	RUBBER ENGINE MOUNT	2
22	P21317	90° ELBOW	1
21	P10690	REDUCER BUSHING	1
20	P13619	CONNECTOR	1
19	N11433	HOSE, RETURN LINE, 1/4"	1
18	N11437	HOSE, FUEL LINE, 5/16"	1
17	P14047	HOSE CLAMP	4
16	P10601	HOSE CLAMP	4
15	P24298	HOSE, UPPER RAD.	1
14	P24299	HOSE, LOWER RAD.	1
13	186688	MOTOR MOUNT	2
12	17116C	TRANS. SUPPORT, L.H.	1
11	17115C	TRANS. SUPPORT, R.H.	1
10	12749C	RIM	4
9	P13673	VALVE STEM	4
8	P13894	LUG NUT	40
7	P11688	TIRE, 13.00-24, 8 PLY	4
6	P21678	DRIVE SHAFT, REAR	1
5	P21779	DRIVE SHAFT, FRONT	1
4	P26154	AXLE, REAR	1
3	P26153	AXLE, FRONT	1
2	P24604	TRANSMISSION, FUNK	1
1	P21985	ENGINE, 276 DEERE	1

(A)

ITEM	PART NO.	DESCRIPTION	REQ.
DEERE Engineering Co., Inc. ST. PAUL, MINNESOTA 55121			
DRAWING BY: <i>[Signature]</i> CHECKED BY: <i>[Signature]</i> S/N 1722, 1724 THRU			
DRIVE TRAIN ASSEMBLY MODEL 844			DEERE SCALE: D 16802-4



51	16833	TRANS. DISCONN. ASSY	REF
50	P17250	BOLT, HX. 3/8-11 NC x 1 1/2	4
49	COM'L	LOCKWASHER, 3/8	4
48	COM'L	COTTER PIN 1/8 x 1	2
47	COM'L	NUT, CASTELATED, 3/8-NC	2
46	COM'L	STARWASHER, 3/8	16
45	COM'L	STARWASHER, 3/8	1
44	COM'L	LOCKWASHER, 1/2	8
43	COM'L	LOCKWASHER, 3/8	11
42	COM'L	LOCKWASHER, M14	4
41	P14225	NUT, HX. 3/4-16 NF	16
40	P17662	JAM NUT, HX. 3/4-16 NF	16
39	P17665	NUT, HX. 3/8-18 NF	1
38	P16793	JAM NUT, HX. 3/8-18 NF	1
37	P17653	BOLT, HX. 3/4-16 NF x 8	8
36	P17652	BOLT, HX. 3/4-16 NF x 9	8
35	P17304	BOLT, HX. 1/2-18 NF x 4 1/2	3
34	P17836	BOLT, HX. 1/2-18 NC x 1 1/2	8
33	P15126	BOLT, HX. 1/8-16 NC x 1 1/2	11
32	P17756	BOLT, HX. M14-2 x 104	4
31	P19197	GASKET, SPONGE	4/R
30	P16180	CLAMP, HOSE	1
29	P13619	CLAMP, HOSE	4
28	P20230	90° MALE ELBOW	1
27	P16673	CONNECTOR, MALE	1
26	P16547	HOSE, FUEL LINE	115
25	P17210	HOSE, RETURN LINE	35"
24	P20396	WASHER, ENGINE MT.	1
23	P16180	RUBBER MTG., ENGINE	1
22	P20395	WASHER, TRANS. MTG.	2
21	P16181	RUBBER MTG., TRANS.	2
20	P10730	PIPE PLUS	1
19	P10231	90° STREET ELBOW	1
18	17065C	MOTOR MOUNT	1
17	17061C	TRANS. SUPPORT, L.H.	1
16	17060C	TRANS. SUPPORT, R.H.	1
15	12749C	WHEEL WELDMENT	4
14	P13673	VALVE STEM	4
13	P13894	WHEEL NUT	40
12	P11688	TIRE, 13.00-24, 8 PLY	4
11	P17902	DRIVE SHAFT, REAR	1
10	P17901	DRIVE SHAFT, FRONT	1
9	P18069	AXLE, REAR	1
8	P18068	AXLE, FRONT	1
7	P17829	TRANSMISSION	1
6	P21345	ENGINE, 287 cu in DEUTZ	1
5	P14150	TAIL PIPE	1
4	17076B	ADAPTOR, EXHAUST	1
3	16828	AIR CLEANER ASS'Y	REF
2	16824	SHROUD & COOLER ASS'Y	REF
1	16820	THROTTLE ASSEMBLY	REF

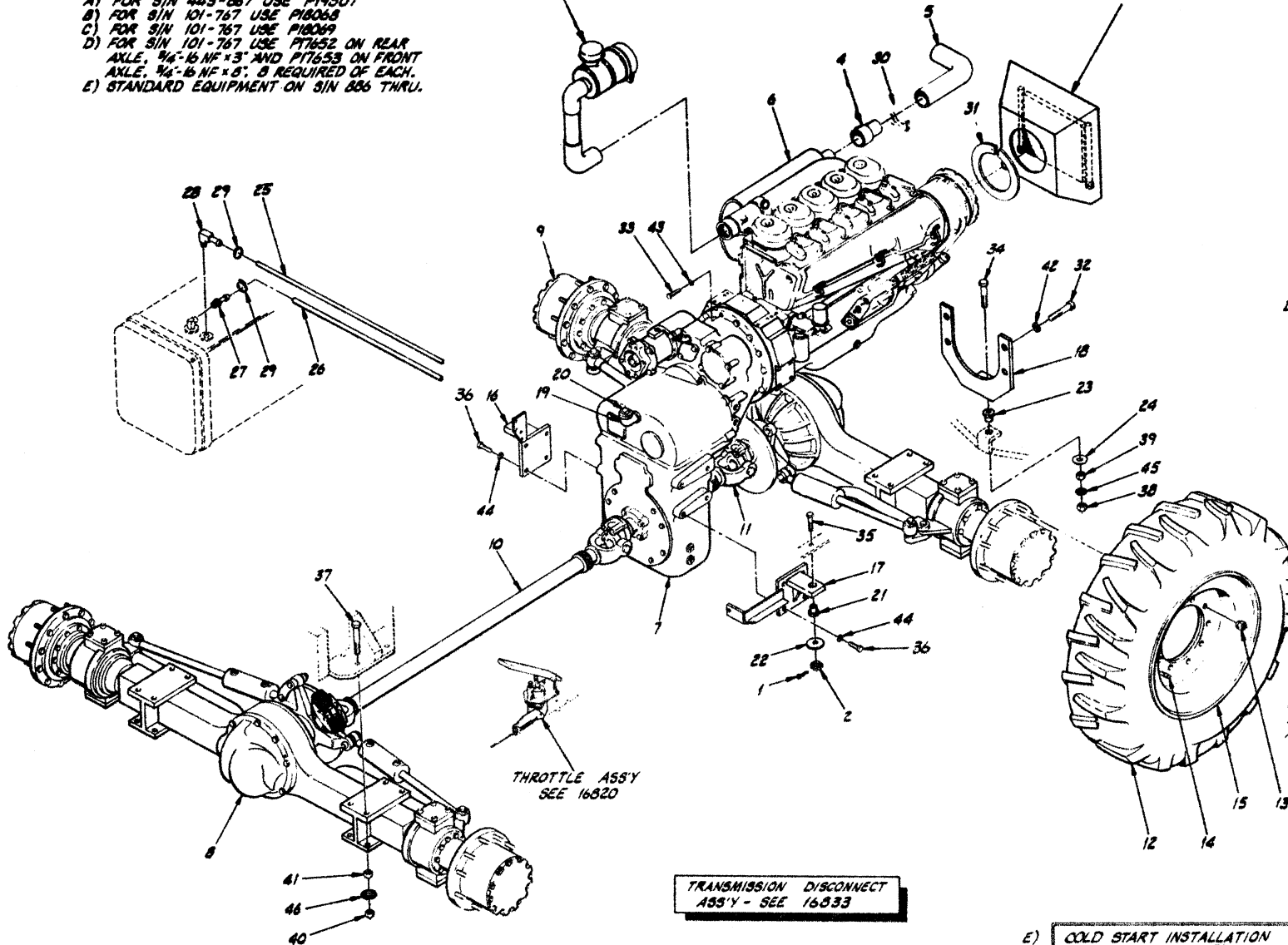
ITEM	PART NO	DESCRIPTION	REF.
LULL Engineering Co., Inc. ST PAUL, MINNESOTA 55121			
DRAWN BY		J DAUB	S/N 101 - 442
DRAWING TITLE		DEUTZ	
SCALE		D	
DRAWING NO.		16803	
MODEL		844	

NOTES:

- A) FOR S/N 443-867 USE P19507
- B) FOR S/N 101-767 USE P18068
- C) FOR S/N 101-767 USE P18069
- D) FOR S/N 101-767 USE P17652 ON REAR AXLE, 3/4"-16 NF x 3" AND P17653 ON FRONT AXLE, 3/4"-16 NF x 6"; 8 REQUIRED OF EACH.
- E) STANDARD EQUIPMENT ON S/N 886 THRU.

AIR CLEANER ASSY
SEE 16827

TRANS. COOLER & AIR
SHROUD ASSEMBLY
SEE 16824



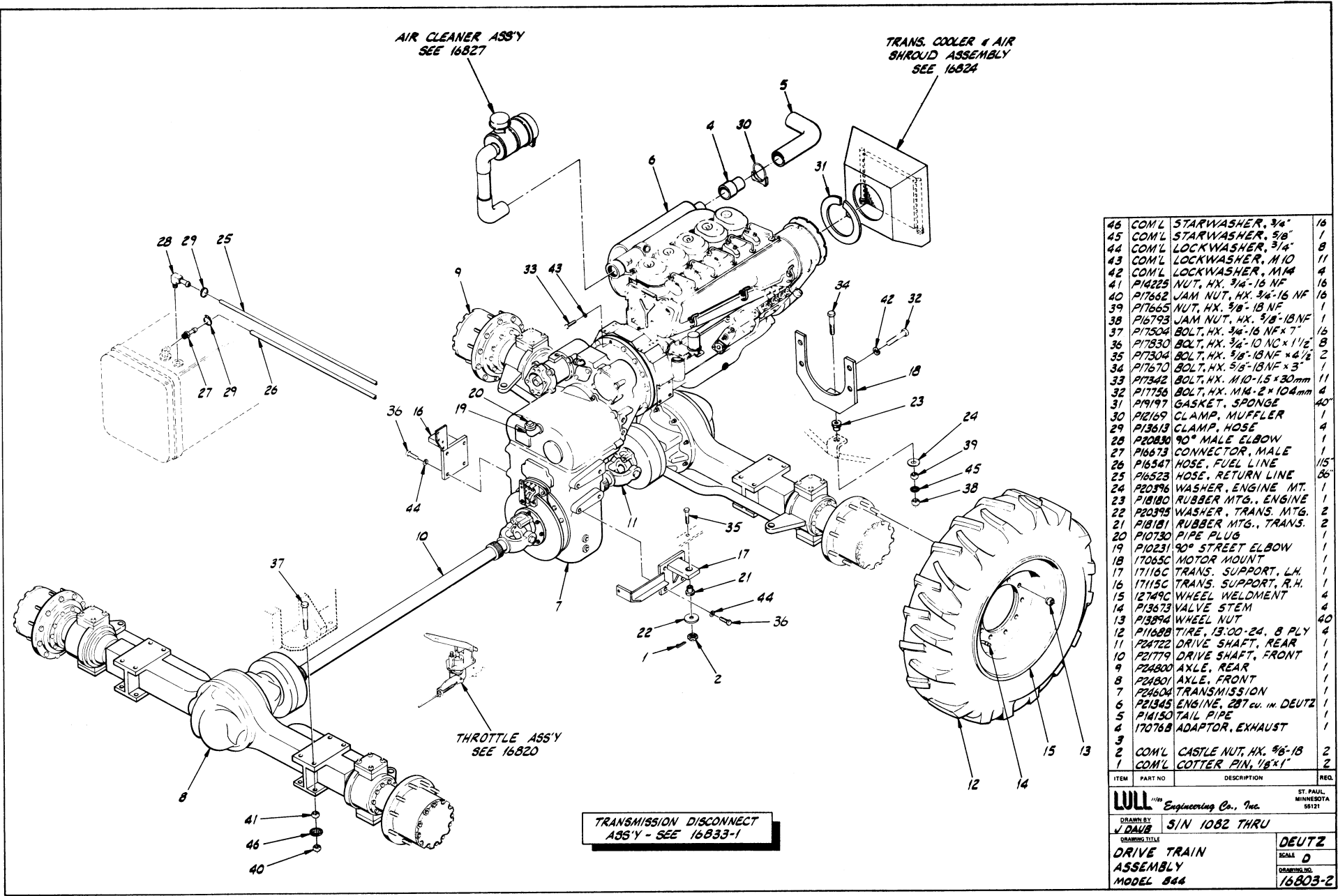
46	COM'L	STARWASHER, 3/8"	16
45	COM'L	STARWASHER, 3/8"	1
44	COM'L	LOCKWASHER, 3/16"	8
43	COM'L	LOCKWASHER, M10	11
42	COM'L	LOCKWASHER, M10	8
41	P1888	NUT, HK, 3/4"-18 NF	18
40	P17662	JAM NUT, HK, 3/4"-16 NF	16
39	P17665	NUT, HK, 3/8"-18 NF	1
38	P16799	JAM NUT, HK, 3/8"-18 NF	1
37	P17304	BOLT, HK, 3/4"-16 NF x 7"	16
36	P17330	BOLT, HK, 3/4"-10 NF x 1 1/2"	8
35	P17304	BOLT, HK, 3/8"-18 NF x 4 1/2"	2
34	P17670	BOLT, HK, 3/8"-18 NF x 3"	1
33	P17342	BOLT, HK, M10-1.5 x 30mm	11
32	P17156	BOLT, HK, M8-2 x 10.4mm	4
31	P19197	GASKET, SPONGE	40
30	P12169	CLAMP, MUFFLER	1
29	P13613	CLAMP, HOSE	4
28	P18889	90° MALE ELBOW	1
27	P16673	CONNECTOR, MALE	1
26	P16347	HOSE, FUEL LINE	1/5
25	P17210	HOSE, RETURN LINE	86
24	P20376	WASHER, ENGINE MT.	1
23	P18180	RUBBER MTG., ENGINE	1
22	P20379	WASHER, TRANS. MTG.	2
21	P18181	RUBBER MTG., TRANS.	2
20	P10730	PIPE PLUG	1
19	P10231	90° STREET ELBOW	1
18	17065C	MOTOR MOUNT	1
17	17116C	TRANS. SUPPORT, L.H.	1
16	17115C	TRANS. SUPPORT, R.H.	1
15	12749C	WHEEL WELDMENT	4
14	P18479	VALVE STEM	4
13	P18894	WHEEL NUT	40
12	P11688	TIRE, 13:00-24, 8 PLY	4
11	P20976	DRIVE SHAFT, REAR	1
10	P20971	DRIVE SHAFT, FRONT	1
9	P21736	AXLE, REAR	1
8	P21735	AXLE, FRONT	1
7	P22808	TRANSMISSION	1
6	P21345	ENGINE, 287 cu. in. DEUTZ	1
5	P16150	TAIL PIPE	1
4	17076B	ADAPTOR, EXHAUST	1
3			
2	COM'L	CASTLE NUT, HK, 3/8"-18	2
1	COM'L	COTTER PIN, 1/8" x 1"	2

ITEM	PART NO.	DESCRIPTION	QTY.
LULL Engineering Co., Inc. ST. PAUL, MINNESOTA 55121			
DRAWN BY: J. DALE S/N 443-1081			
DRIVE TRAIN ASSEMBLY			DEUTZ SCALE: D DRAWING NO.: 16503-1

TRANSMISSION DISCONNECT
ASSY - SEE 16833

E) COLD START INSTALLATION
KIT - ORDER 16345D

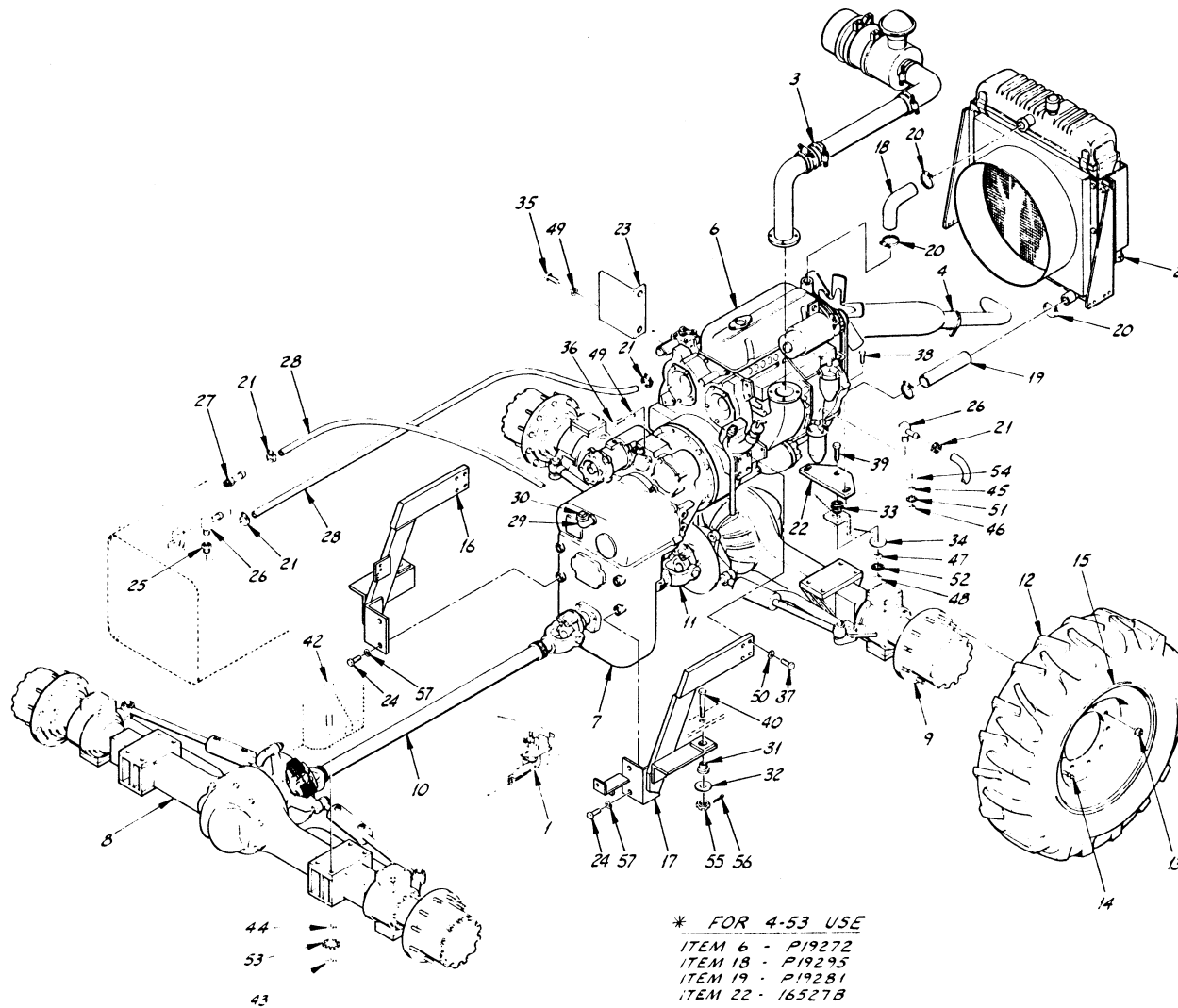
FUEL SHUT
OFF-Cable
P20078



TRANSMISSION DISCONNECT
ASS'Y - SEE 16833-1

46	COM'L	STARWASHER, 3/4"	16
45	COM'L	STARWASHER, 3/8"	1
44	COM'L	LOCKWASHER, 3/4"	8
43	COM'L	LOCKWASHER, M10	11
42	COM'L	LOCKWASHER, M14	4
41	P14225	NUT, HX. 3/4"-16 NF	16
40	P17662	JAM NUT, HX. 3/4"-16 NF	16
39	P17665	NUT, HX. 3/8"-18 NF	1
38	P16793	JAM NUT, HX. 3/8"-18 NF	1
37	P17504	BOLT, HX. 3/4"-16 NF x 7"	16
36	P17830	BOLT, HX. 3/4"-10 NC x 1 1/2"	8
35	P17304	BOLT, HX. 3/8"-18 NF x 4 1/2"	2
34	P17670	BOLT, HX. 5/8"-18 NF x 3"	1
33	P17342	BOLT, HX. M10-1.5 x 30mm	11
32	P17756	BOLT, HX. M14-2 x 104mm	4
31	P19197	GASKET, SPONGE	40
30	P12169	CLAMP, MUFFLER	1
29	P13613	CLAMP, HOSE	4
28	P20830	90° MALE ELBOW	1
27	P16673	CONNECTOR, MALE	1
26	P16547	HOSE, FUEL LINE	115'
25	P16523	HOSE, RETURN LINE	86'
24	P20396	WASHER, ENGINE MT.	1
23	P18180	RUBBER MTG., ENGINE	1
22	P20395	WASHER, TRANS. MTG.	2
21	P18181	RUBBER MTG., TRANS.	2
20	P10730	PIPE PLUG	1
19	P10231	90° STREET ELBOW	1
18	17065C	MOTOR MOUNT	1
17	17116C	TRANS. SUPPORT, LH.	1
16	17115C	TRANS. SUPPORT, RH.	1
15	12749C	WHEEL WELDMENT	4
14	P13673	VALVE STEM	4
13	P13894	WHEEL NUT	40
12	P11688	TIRE, 13.00-24, 8 PLY	4
11	P24722	DRIVE SHAFT, REAR	1
10	P21779	DRIVE SHAFT, FRONT	1
9	P24800	AXLE, REAR	1
8	P24801	AXLE, FRONT	1
7	P24604	TRANSMISSION	1
6	P21345	ENGINE, 287 cu. in. DEUTZ	1
5	P14150	TAIL PIPE	1
4	17076B	ADAPTOR, EXHAUST	1
3			2
2	COM'L	CASTLE NUT, HX. 3/8"-18	2
1	COM'L	COTTER PIN, 1/8"x1"	2

ITEM	PART NO	DESCRIPTION	REQ.
LULL Engineering Co., Inc. ST. PAUL, MINNESOTA 55121			
DRAWN BY J DAUB S/N 1082 THRU			
DRIVE TRAIN ASSEMBLY MODEL 844			DEUTZ SCALE D 16803-2



* FOR 4-53 USE

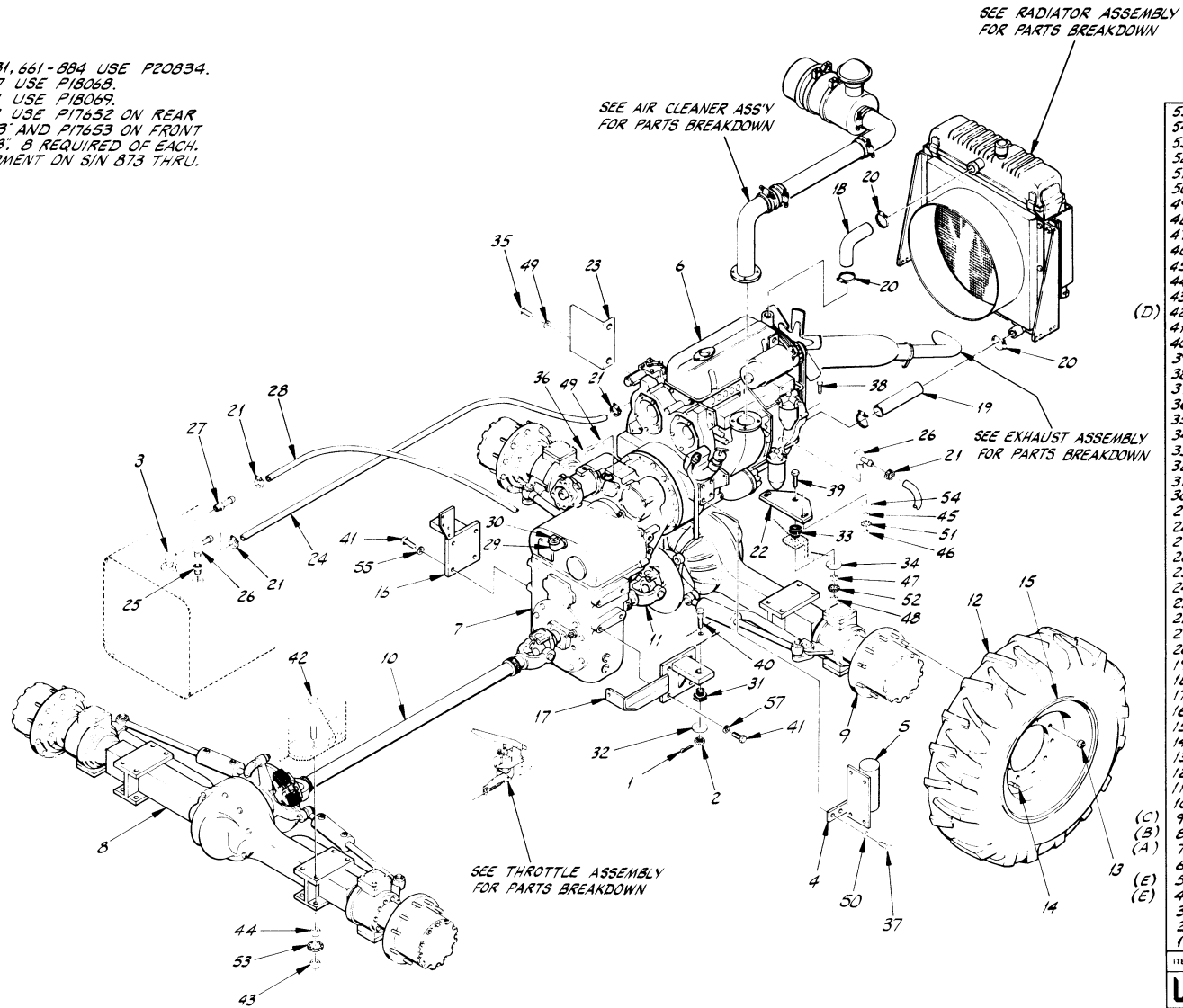
ITEM 6 - P19272
 ITEM 18 - P19295
 ITEM 19 - P19281
 ITEM 22 - 16527B

57	COM'L	LOCKWASHER, 3/8	4
56	COM'L	COTTER PIN, 1/8 x 1	2
55	COM'L	NUT, CASTELATED, 3/8-11	2
54	COM'L	FLATWASHER, 1/2	2
53	COM'L	STARWASHER, 3/4	16
52	COM'L	STARWASHER, 3/8	1
51	COM'L	STARWASHER, 1/2	2
50	COM'L	LOCKWASHER, 1/2	8
49	COM'L	LOCKWASHER, 3/8	13
48	P14223	NUT, HX 3/8-11 NC	1
47	P11430	JAM NUT, HX 3/8-11 NC	1
46	P17671	NUT, HX 1/2-13 NC	2
45	P17661	JAM NUT, HX 1/2-13 NC	2
44	P14225	NUT, HX 3/4-16 NF	16
43	P17662	JAM NUT, HX 3/4-16 NF	16
42	P17653	BOLT, HX 3/4-16 NF x 3	8
41	P17652	BOLT, HX 1/4-16 NF x 3	8
40	P17304	BOLT, HX 3/8-11 NC x 4 1/2	2
39	P17795	BOLT, HX 3/8-11 NC x 3 1/2	1
38	P18024	BOLT, HX 1/2-13 NC x 2 3/4	2
37	P17836	BOLT, HX 1/2-13 NC x 1 1/2	8
36	P15126	BOLT, HX 1/8-16 NC x 1 1/2	11
35	P12884	BOLT, HX 3/8-16 NC x 3/4	2
34	P20396	WASHER, ENGINE MT.	1
33	P18180	RUBBER MTG., ENG.	1
32	P20395	WASHER, TRANS. MT.	2
31	P18181	RUBBER MTG., TRANS.	2
30	P10730	PIPE PLUG	1
29	P10231	90° STREET ELBOW	1
28	P16666	HOSE, FUEL LINE	AIR
27	P16673	MALE CONNECTOR	1
26	P21317	90° ELBOW, BRASS	2
25	P10692	REDUCER BUSHING	1
24	P17250	BOLT, HX 3/8-11 NC x 1 1/2	4
23	16897A	HEAT SHIELD	1
*	16370B	MOTOR MOUNT	1
21	P13613	HOSE CLAMP	4
20	P10601	HOSE CLAMP	4
19	P19470	HOSE, LOWER RAD.	1
18	P19469	HOSE, UPPER RAD.	1
17	15521-10	TRANS SUPPT., L.H.	1
16	15520-10	TRANS SUPPT., R.H.	1
15	12749C	WHEEL WELDMENT	4
14	P13673	VALVE STEM	4
13	P13894	WHEEL NUT	40
12	P17688	TIRE, 13.00-24, 8 PLY	4
11	P17902	DRIVE SHAFT, REAR	1
10	P17901	DRIVE SHAFT, FRONT	1
9	P18069	AXLE, REAR	1
8	P18068	AXLE, FRONT	1
7	P18812	TRANSMISSION	1
6	P19500	ENGINE, 3-53 DETROIT	1
5	16833	TRANS DISCONNECT	1
4	16832	EXHAUST ASSEMBLY	1
3	16829	AIR CLEANER ASS'Y	1
2	16825	RADIATOR ASSEMBLY	1
1	16821	THRATTLE ASSEMBLY	1

ITEM	PART NO.	DESCRIPTION	REQ.
LULL Engineering Co., Inc. ST. PAUL, MINNESOTA 56131			
DRAWN BY J.DAUB S/N 101-427 & 632-660			
DRAWING TITLE DRIVE TRAIN ASSEMBLY MODEL 844			DETROIT SCALE D
			DRAWING NO. 16804

NOTES:

- A) FOR S/N 428-631, 661-884 USE P20834.
- B) FOR S/N 101-767 USE P18068.
- C) FOR S/N 101-767 USE P18069.
- D) FOR S/N 101-767 USE P17652 ON REAR AXLE, 3/4-16 NF x 3" AND P17653 ON FRONT AXLE, 3/4-16 NF x 8". 8 REQUIRED OF EACH.
- E) STANDARD EQUIPMENT ON S/N 873 THRU.



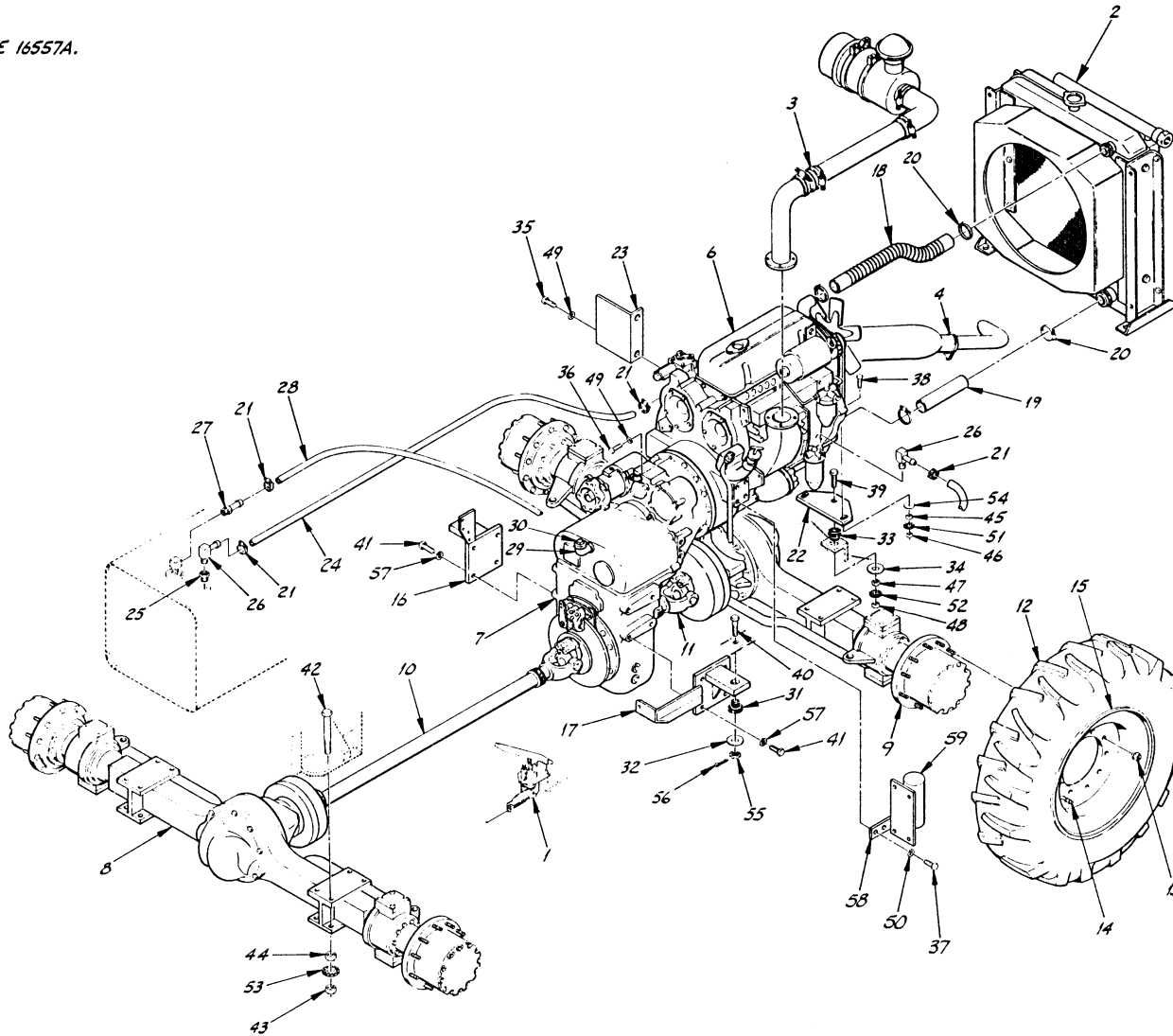
TRANSMISSION DISCONNECT ASSY
SEE PARTS BREAKDOWN

55	COM'L	LOCKWASHER, 3/8"	8
54	COM'L	FLATWASHER, 1/2"	2
53	COM'L	STARWASHER, 3/4"	16
52	COM'L	STARWASHER, 5/8"	1
51	COM'L	STARWASHER, 1/2"	2
50	COM'L	LOCKWASHER, 1/2"	2
49	COM'L	LOCKWASHER, 3/8"	13
48	P17665	NUT, HX 3/8-18	1
47	P16793	JAM NUT, HX 5/8-18	1
46	P17671	NUT, HX 1/2-13	2
45	P17661	JAM NUT, HX 1/2-13	2
44	P14225	NUT, HX 3/4-16	16
43	P17662	JAM NUT, HX 3/4-16	16
42	P17504	BOLT, HX 3/4-16 NF x 7"	16
41	P17830	BOLT, HX 3/4-10 NC x 1 1/2"	8
40	P17304	BOLT, HX 3/8-18 NF x 4 1/2"	2
39	P17670	BOLT, HX 3/8-18 NF x 3"	1
38	P18024	BOLT, HX 1/2-13 NC x 2 3/4"	2
37	P17666	BOLT, HX 1/2-13 NC x 1 1/2"	2
36	P15126	BOLT, HX 3/8-16 NC x 1 1/2"	11
35	P18884	BOLT, HX 3/8-16 NC x 3/4"	2
34	P20396	WASHER, ENGINE MT.	1
33	P18180	RUBBER MTG., ENG.	1
32	P20395	WASHER, TRANS. MT.	2
31	P18181	RUBBER MTG., TRANS.	2
30	P10730	PIPE PLUG	1
29	P10231	90° STREET ELBOW	1
28	N11440	HOSE, FUEL LINE, 3/8"	1
27	P16672	MALE CONNECTOR	1
26	P21317	90° ELBOW, BRASS	2
25	P10690	REDUCER BUSHING	1
24	N11436	HOSE, RETURN LINE, 3/8"	1
23	168897A	HEAT SHIELD	1
22	165708	MOTOR MOUNT	1
21	P18613	HOSE CLAMP	4
20	P10601	HOSE CLAMP	4
19	P19470	HOSE, LOWER RAD.	1
18	P19469	HOSE, UPPER RAD.	1
17	17116C	TRANS SUPP'T., L.H.	1
16	17115C	TRANS SUPP'T., R.H.	1
15	12749C	WHEEL (RIM)	4
14	P13673	VALVE STEM	4
13	P13894	WHEEL NUT	40
12	P11688	TIRE, 13.00-24, 8 PLY	4
11	P20972	DRIVE SHAFT, REAR	1
10	P20971	DRIVE SHAFT, FRONT	1
9	P21730	AXLE, REAR	1
8	P21735	AXLE, FRONT	1
7	P22824	TRANSMISSION	1
6	P19500	ENGINE, 3-53 DETROIT	1
5	P21422	QUICK START KIT	1
4	18512A	BRACKET, QUICK START	1
3	P25362	STAND TUBE	-
2	COM'L	CASTLE NUT, HX, 3/8-18	2
1	COM'L	COTTER PIN, 1/8x1"	2

ITEM	PART NO.	DESCRIPTION	REQ.
ST. PAUL, MINNESOTA 55121			
LULL Engineering Co., Inc.			
DRAWN BY J. DALB			
DRAWING TITLE S/N 428-631, 661-1081			
DRIVE TRAIN ASSEMBLY			DETROIT
MODEL 844			SCALE D
			QUANTITY 16804-1

NOTES:

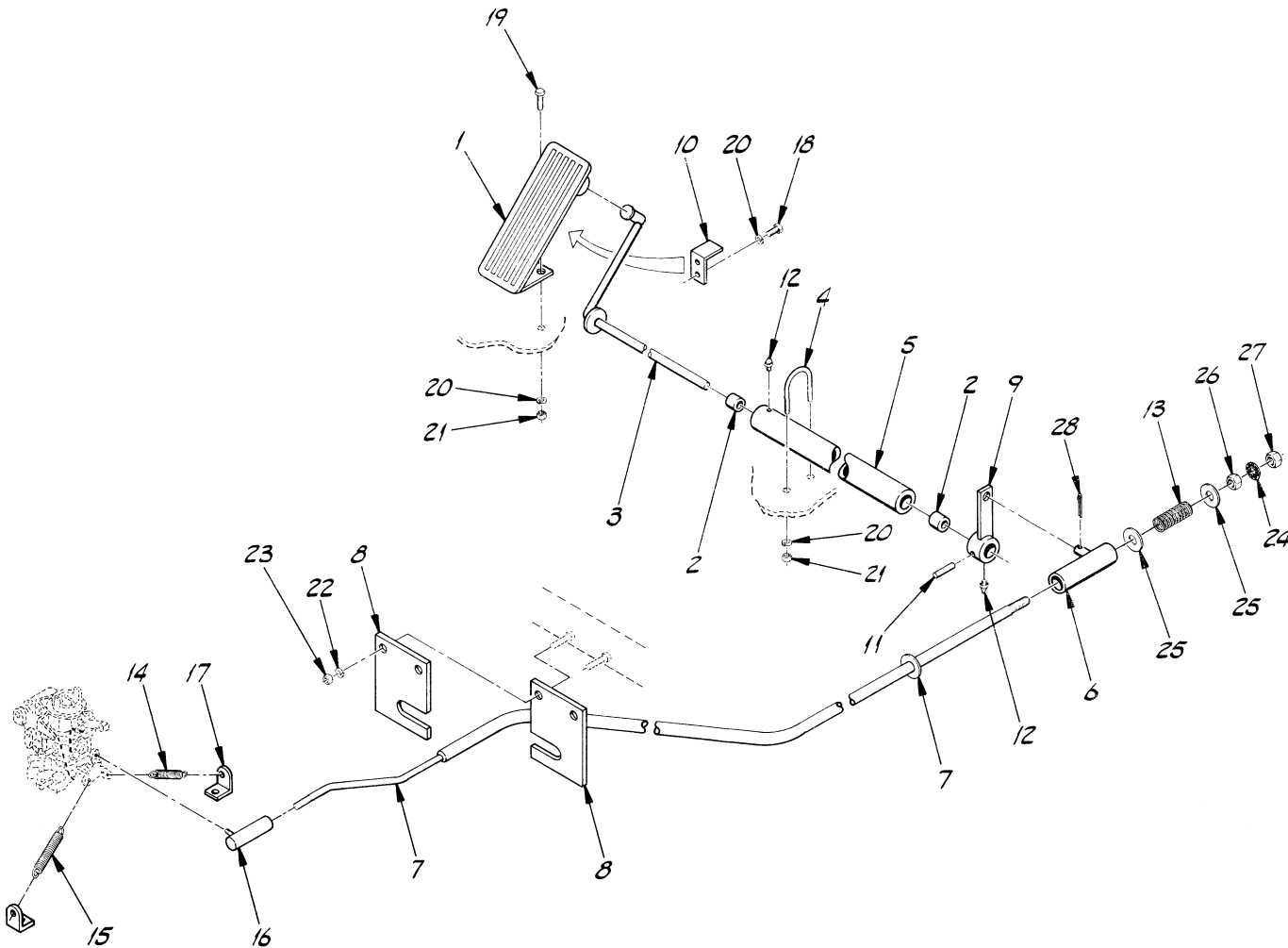
A) FOR SIN 1095 USE 16557A.



59	P2422	QUICK START KIT	1
58	18512A	BRACKET, QUICK START	1
57	COM'L	LOCKWASHER, 3/4	8
56	COM'L	COTTER PIN, 1/8 x 1	2
55	COM'L	NUT, CASTELATED, 3/8-18	2
54	COM'L	FLATWASHER, 1/2	2
53	COM'L	STARWASHER, 3/4	16
52	COM'L	STARWASHER, 1/2	1
51	COM'L	STARWASHER, 1/2	2
50	COM'L	LOCKWASHER, 1/2	2
49	COM'L	LOCKWASHER, 3/8	13
48	P17665	NUT, HX 3/8-18	1
47	P16793	JAM NUT, HX 3/8-18	1
46	P17671	NUT, HX 1/2-13	2
45	P17661	JAM NUT, HX 1/2-13	2
44	P14225	NUT, HX 3/4-16	16
43	P17662	JAM NUT, HX 3/4-16	16
42	P17504	BOLT, HX 3/4-16 NF x 7	16
41	P17830	BOLT, HX 3/4-10 NC x 1 1/2	8
40	P17304	BOLT, HX 3/8-18 NF x 4 1/2	2
39	P17670	BOLT, HX 3/8-18 NF x 3	1
38	P18024	BOLT, HX 1/2-13 NC x 2 1/4	2
37	P17666	BOLT, HX 1/2-13 NC x 1 1/4	2
36	P15126	BOLT, HX 3/8-16 NC x 1 1/2	11
35	P12884	BOLT, HX 1/8-16 NC x 3/4	2
34	P20396	WASHER, ENGINE MT.	1
33	P18180	RUBBER MTG., ENG.	1
32	P20395	WASHER, TRANS. MT.	2
31	P18181	RUBBER MTG., TRANS.	2
30	P10780	PIPE PLUG	1
29	P10231	90° STREET ELBOW	1
28	P16666	HOSE, FUEL LINE, 3/8"	101
27	P16672	MALE CONNECTOR	1
26	P21317	90° ELBOW, BRASS	2
25	P10692	REDUCER BUSHING	1
24	P16547	HOSE, RETURN LINE, 3/8"	92
23	16897A	HEAT SHIELD	1
22	16570B	MOTOR MOUNT	1
21	P13613	HOSE CLAMP	4
20	P10601	HOSE CLAMP	4
19	16558A	HOSE, LOWER RAD.	1
18	P17681	HOSE, UPPER RAD.	1
17	17116C	TRANS SUPP'T., L.H.	1
16	17115C	TRANS SUPP'T., R.H.	1
15	12749C	WHEEL	4
14	P13673	VALVE STEM	4
13	P13894	WHEEL NUT	40
12	P11689	TIRE, 13.00-24, 8 PLY	4
11	P24722	DRIVE SHAFT, REAR	1
10	P21779	DRIVE SHAFT, FRONT	1
9	P24800	AXLE, REAR	1
8	P24801	AXLE, FRONT	1
7	P24603	TRANSMISSION	1
6	P19500	ENGINE, 3-53 DETROIT	1
5	16833	TRANS DISCONNECT	REG.
4	16832	EXHAUST ASSEMBLY	REG.
3	16829	AIR CLEANER ASS'Y	REG.
2	16825	RADIATOR ASSEMBLY	REG.
1	16821	THROTTLE ASSEMBLY	REG.

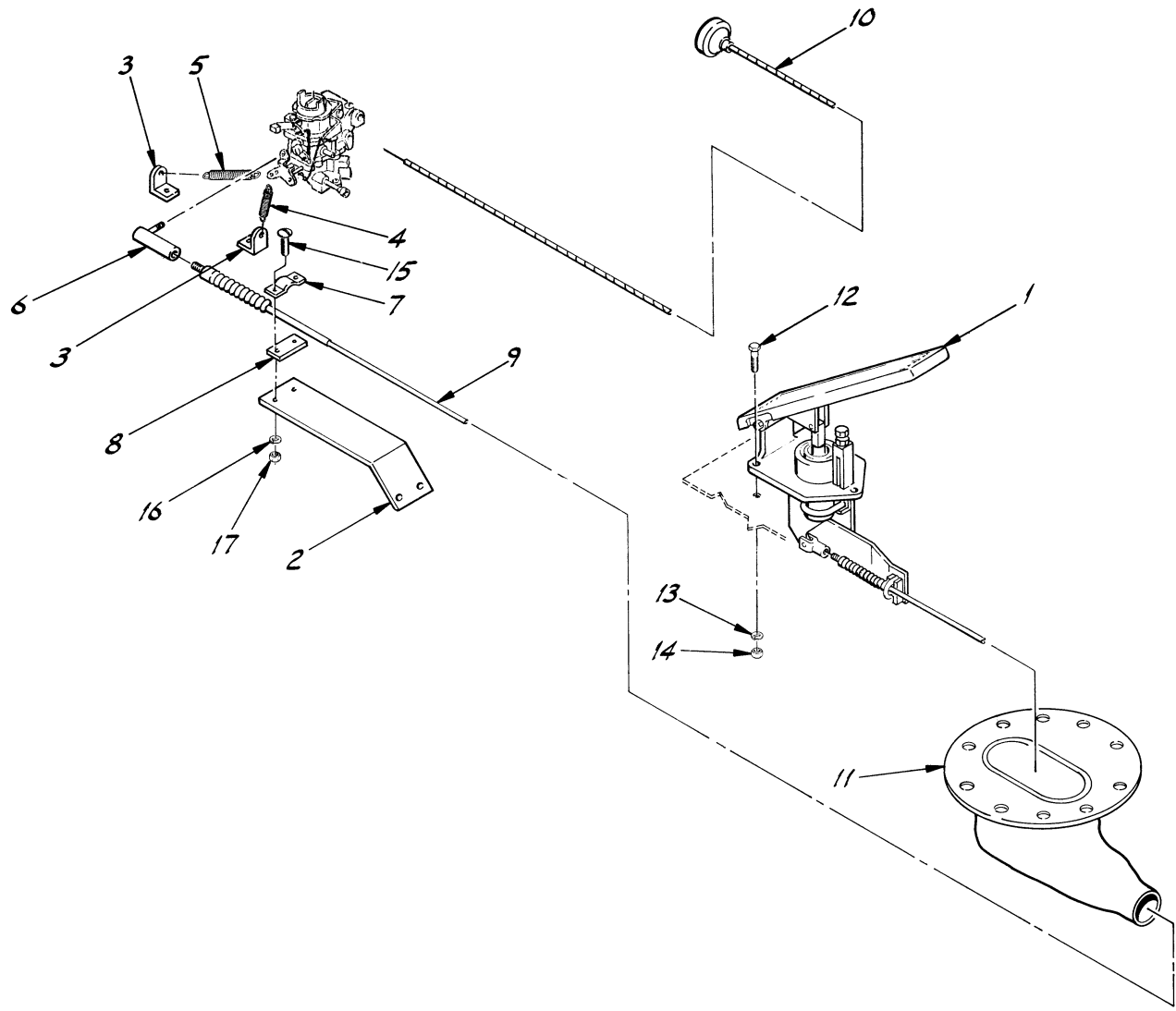
A)

ITEM	PART NO.	DESCRIPTION	REQ.
LULL Engineering Co., Inc. <small>ST. PAUL, MINNESOTA 56121</small>			
DRAWN BY J. DAUB			
DRAWING TITLE SIN 1082 THRU			
DRIVE TRAIN ASSEMBLY			DETROIT
MODEL 844			SCALE D
			DRAWING NO. 16804-2



28	COM'L	COTTER PIN, 1/8" x 3/4"	1
27	COM'L	JAM NUT, HX. 3/8"-16 NC	1
26	COM'L	NUT, HX. 3/8"-16 NC	1
25	COM'L	FLATWASHER, 3/8"	2
24	COM'L	STARWASHER, 3/8"	1
23	COM'L	NUT, HX. 5/16"-18 NC	2
22	COM'L	LOCKWASHER, 5/16"	2
21	COM'L	NUT, HX. 1/4"-20 NC	6
20	COM'L	LOCKWASHER, 1/4"	8
19	COM'L	BOLT, HX. 1/4"-20 NC x 3/4"	2
18	COM'L	BOLT, HX. 1/4"-20 NC x 1/2"	2
17	13758A	ANCHOR, SPRING	2
16	P12979	BALL JOINT	1
15	P15274	SPRING, LONG	1
14	P17337	SPRING, SHORT	1
13	P19187	SPRING, THROTTLE ROD	1
12	P16611	GREASE ZERK	1
11	P10350	ROLL PIN	1
10	15549A	PEDAL STOP	1
9	15547A	LEVER PIVOT	1
8	15546A	SUPPORT BRACE	2
7	15545B	THROTTLE ROD	1
6	15544A	SLEEVE, THROTTLE ROD	1
5	15543A	SLEEVE, PIVOT ROD	1
4	15542A	U-CLAMP	2
3	15541A	PIVOT ROD	1
2	P19115	BUSHING	2
1	P17737	ACCELERATOR PEDAL	1

ITEM	PART NO.	DESCRIPTION	REQ.
		WLL ^{5/161} Engineering Co., Inc.	ST. PAUL, MINNESOTA 55121
DRAWN BY <i>Jeff Daut</i>		S/N 101-194, 197-215, 217-219	
DRAWING TITLE		CHRYSLER	
THROTTLE ASSEMBLY		SCALE C	
MODEL 844		DRAWING NO. 16818	



17	COM'L	NUT, FULL #10-24	2
16	COM'L	LOCKWASHER, #10	2
15	COM'L	CAPSCREW, R.H. #10-24 x 1"	2
14	COM'L	NUT, HX 1/4"-20	3
13	COM'L	LOCKWASHER, 1/4"	3
12	COM'L	BOLT, HX 1/4"-20 x 1"	3
11	P19268	BOOT GUARD, RUBBER	1
10	P20078	CABLE, CHOKE	1
9	P19264	CABLE, THROTTLE	1
8	P19128	SHIM	1
7	P17678	CLAMP, CABLE	1
6	P10505	BALL JOINT	1
5	P15274	SPRING, 6"	1
4	P17337	SPRING, 3"	1
3	13758A	ANCHOR, SPRING	1
2	16174B	CABLE SUPPT BRKT.	1
1	P19263	ACCELERATOR PEDAL	1

ITEM	PART NO.	DESCRIPTION	REQ.
------	----------	-------------	------

		ST. PAUL, MINNESOTA 55121	
DRAWN BY J DAUB	S/N 196,216,220 THRU		
DRAWING TITLE THROTTLE ASSEMBLY MODEL 844		CHRYSLER SCALE C DRAWING NO. 16818-1	