

# Contents

Page

<b>1. Overview</b> .....	<b>1</b>
<b>2. System Requirements</b> .....	<b>1</b>
<b>3. Installing the Software</b> .....	<b>2</b>
<b>4. Description of the System</b> .....	<b>4</b>
4.1 Description of the Program .....	4
4.2 Authority and Password Management.....	4
<b>5. Starting/Quitting the Software</b> .....	<b>5</b>
5.1 Starting the Software .....	5
5.1.1 Connecting the System Components .....	5
5.1.2 Turning on the Devices .....	5
5.1.3 Installing the USB Driver .....	5
5.1.4 Startup Screen .....	7
5.2 Quitting the Software .....	10
5.3 Troubleshooting .....	10
<b>6. Screen Components</b> .....	<b>11</b>
6.1 Basic screen .....	11
6.1.1 Standard Tool Bar .....	12
6.1.2 Operation Tool Bar .....	13
6.1.3 Function Select Tool Bar .....	15
<b>7. Main Menu</b> .....	<b>16</b>
7.1 System Information <b>【Universal Function】</b> .....	16
7.1.1 System Information .....	16
7.2 Fault Code.....	17
7.2.1 Active Diagnostic Trouble Code <b>【Universal Function】</b> .....	17
7.2.2 Logged Diagnostic Trouble Code <b>【Mechanic Function】</b> .....	18
7.3 Freeze Frame Data <b>【Mechanic Function】</b> .....	19
7.3.1 Stored Data .....	19
7.3.2 Trend Graph .....	21
7.4 Diagnostic Test .....	22
7.4.1 Analog/Pulse Input/Output Test <b>【Universal Function】</b> .....	22
7.4.2 Digital Input Test <b>【Universal Function】</b> .....	23
7.4.3 Digital Output Test <b>【Mechanic Function】</b> .....	24
7.4.4 Active Control <b>【Mechanic Function】</b> .....	26
7.4.5 Active Control Graph .....	28
7.4.6 Hysteresis Measure (Graph Display) .....	29

7.5 Data Logging 【Mechanic Function】 .....	31
7.5.1 Data Monitor .....	31
7.5.2 Stored Data .....	37
7.5.3 Trend Graph 【Mechanic Function】 .....	38
7.6 Historical Data .....	39
7.6.1 Lifetime Data 【Universal Function】 .....	39
7.6.2 RPM-Load Profile 【Mechanic Function】 .....	40
7.7 ECU Identification 【Mechanic Function】 .....	41
7.7.1 Analog Channels .....	41
7.7.2 Digital Channels 【Mechanic Function】 .....	42
7.7.3 ECU ID Information .....	43
7.8 System Installation .....	44
7.8.1 Configuration 【Mechanic Function】 .....	44
7.8.2 Calibration 【Mechanic Function】 .....	51
7.8.3 Tuning 【Mechanic Function】 .....	52
<b>8. Graph Function .....</b>	<b>53</b>
8.1 Setting the Graphs .....	53
8.1.1 Basic Operations in Analog Mode .....	53
8.1.2 Saving and Loading Setting Values .....	54
8.1.3 Digital Mode .....	55
8.2 Graph Operations .....	56
<b>9. Print Function .....</b>	<b>57</b>
<b>10. Saving and Loading Data .....</b>	<b>57</b>
<b>11. Tool Functions .....</b>	<b>58</b>
11.1 System Setting .....	58
11.2 User Management .....	59
11.3 Changing a Password .....	60
<b>12. Glossary .....</b>	<b>61</b>
<b>13. Appendix .....</b>	<b>61</b>
<b>14. References .....</b>	<b>62</b>

# 1. Overview

---

The YANMAR Engine Diagnostic Service Tool (YEDST) for the TNV series is software to support troubleshooting and installation/maintenance services for electronic control engines. It runs on personal computers (PC/AT) running Windows operating system.

## 2. System Requirements

---

The following are required to operate the YANMAR Engine Diagnostic Service Tool (YEDST).

### PC……PC/AT compatible

- Communication port : USB
- Display resolution : 1024 × 768
- OS : Windows 2000 Professional SP1, Windows XP Professional, Windows XP Home, Windows XP Tablet PC Edition

### Communication IF box

- Firmware version : 02.15
- DLL version : 02.00
- API version : 02.02

### Cables

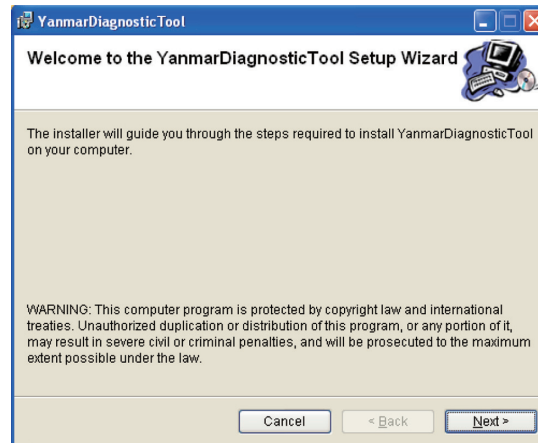
- USB cable
- Diagnostic cable

## 3. Installing the Software

---

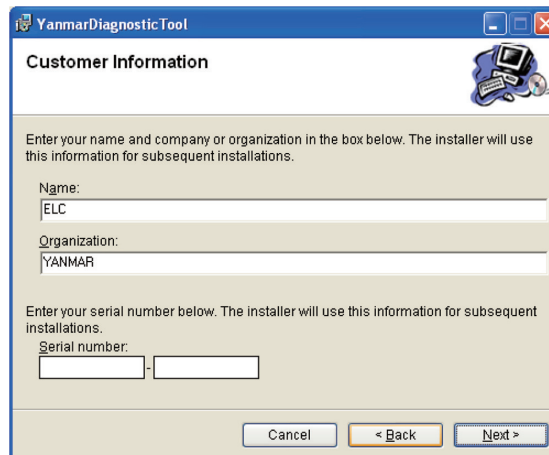
- 1) Log in as an administrator.
- 2) Run the Setup.exe file on the CD-ROM.

The screen as shown below appears.

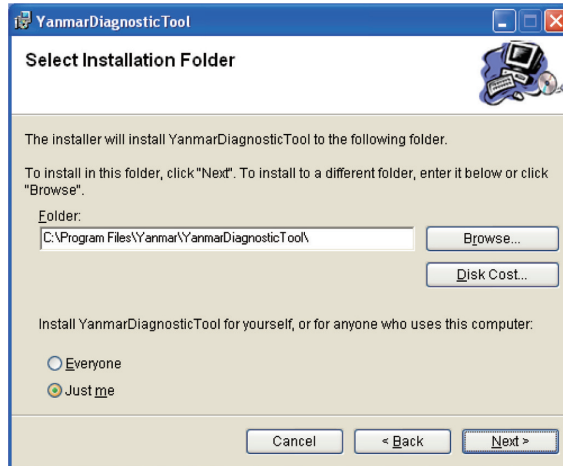


Press the **Next>** button.

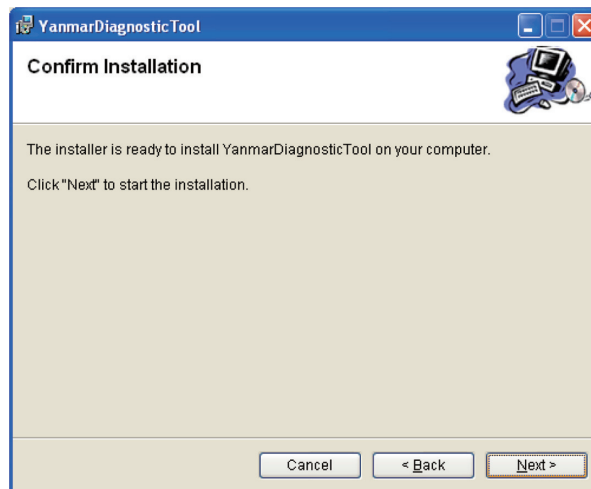
The screen as shown below appears.



Enter your name and organization. Enter the serial number of your product, and press the **Next>** button. If this number is not correct, the program does not operate normally.

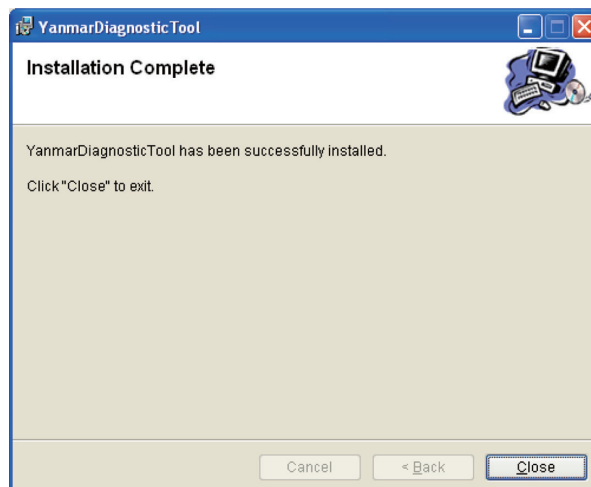


Choose a folder to install the program, and press the **Next>** button. The confirmation screen appears.



Press the **Next>** button. Installation starts.

When the installation is completed, the screen as shown below appears. Click the **Close** button.



## 4 — 4. Description of the System

# 4. Description of the System

---

## 4.1 Description of the Program

---

### 1) Diagnostic software

This is the main software to support troubleshooting and installation/maintenance services by connecting the ECU and your PC (Figure 4-1). At startup, you can change ECU's ID number and communication speed settings.

### 2) Training mode

This mode lets you learn how to use the diagnostic software using your PC only without connecting to the ECU. You can operate the tool and simulate the operation of the ECU using data stored on your PC.

### 3) System setting program

This is software to set the communication conditions for the ECU. If you need to change conditions other than ECU's hardware address number and communication speed, you need to run this program in advance. This function is included in the tool function of the diagnostic software.

## 4.2 Authority and Password Management

---

Functions are divided into 2 groups depending on their service function level. Different passwords can be set for each function level.

### 1) Standard mode (universal functions)

Functions that are equivalent to those of the display panel and open to general users. Only these functions are available when you log in with a user-level password.

### 2) Mechanic mode (mechanic functions)

Functions that are used by maintenance staff and not open to general users. These functions are available only when you log in with an administrator-level password. For clearing data or changing setting values, a password is prompted again when data is written, even if you logged in with an administrator-level password. Once you enter your password, you can continue operation for 10 minutes without reentering the password.

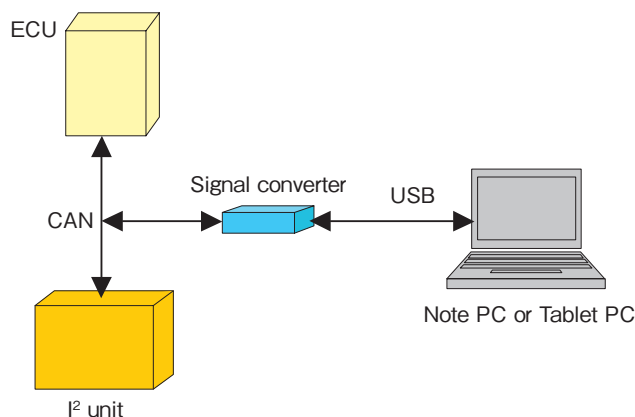


Figure 4-1 System Connection