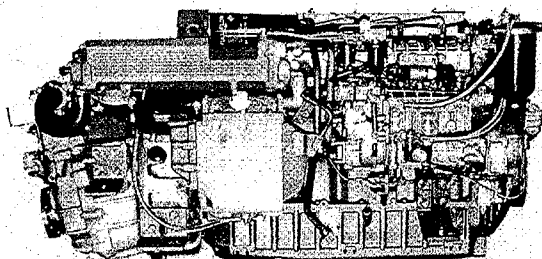


OPERATION MANUAL  
MODE D'EMPLOI  
BEDIENUNGSANLEITUNG  
MANUAL DE OPERACION  
MANUALE DI ISTRUZIONI  
BRUKSANVISNING

# YANMAR

**YANMAR DIESEL  
ENGINE**

**6LY(M)-UTE·STE  
6LY(M)-UTEHD**



**!**  
Be sure to read this manual for safe and proper operation.  
Store this manual carefully after use.



Congratulations on your choice of  
YANMAR product from YANMAR DIESEL ENGINE CO., LTD.  
This manual describes operation, periodic inspection and  
maintenance servicing for the ENGINE manufactured by  
YANMAR DIESEL ENGINE CO., LTD.

Please read this manual carefully before use, and operate  
your engine properly under the optimum conditions, should  
you have any questions or concerns, please do not hesitate to  
contact your nearest dealer or distributor.

## California Proposition 65 Warning

Battery posts, terminals, and related  
accessories contain lead and lead  
compounds, chemicals known to the  
State of California to cause cancer and  
reproductive harm.

Wash hand after handling



These products have been developed,  
designed and manufactured in the facilities certified by the Standards for Quality  
systems of ISO 9001.

**ENGLISH**

**6LY(M)-UTE, UTEHD, STE SERIES DIESEL ENGINE**  
OPERATION MANUAL

**FRANÇAIS**

**MOTEUR DIESEL SERIE 6LY(M)-UTE, UTEHD, STE**  
LIVRET D'ENTRETIEN

**DEUTSCH**

**DIESELMOTOR DER SERIE 6LY(M)-UTE, UTEHD, STE**  
BEDIENUNGSANLEITUNG

**ESPAÑOL**

**MOTOR DIESEL SERIE 6LY(M)-UTE, UTEHD, STE**  
MANUAL FUNCIONAMIENTO

**ITALIANO**

**MOTOR DIESEL SERIE 6LY(M)-UTE, UTEHD, STE**  
MANUALE DI ISTRUZIONI

**SVENSK**

**DIESELMOTOR SERIE 6LY(M)-UTE, UTEHD, STE**  
BRUKSANVISNING