

# Yanmar 2gm20 Parts List

Full download: <http://manualplace.com/download/yanmar-2gm20-parts-list/>



## PARTS CATALOG

Published 2010/11 (Nov.)

0CR10-G47101

## How to read this Parts Catalog.

1. Parts mentioned in Parts Catalog may not necessarily be standard equipping parts
2. Parts change may be made without prior notice.
3. Form of this Parts Catalog.

Y00F2161 29. FUEL INJECTION PUMP(W/BOOST)						(A)=4JH-DT (D)=4JH-DTZA (B)=4JH-DTZ (E)=4JH-DTZ (C)=4JH-DTZP (F)=
REF.	LEV.	PARTS NO.	DESCRIPTION	(A) (B) (C) (D) (E) (F)	I R	
1	1	729595-51390	FUEL INJECTION PUMP	1 1 1 1 1	1	
1-1	1	729595-51391	FUEL INJECTION PUMP	1 1 1 1 1	1	
		(A=E00185) (B=E00200)				
3	2	26022-060162	SCREW M 6X 16	9 9 9 9 9		
3-1	2	26022-060162	SCREW M 6X 16	4 4 4 4 4	K	
		(A=E00156) (B=E00156) (C=E00156) (D=E00156) (E=E00156)				
4	2	129470-51040	CAMSHFT	1 1 1 1 1		
5	2	122710-51050	BEARING,ROLLER	2 2 2 2 2		
6	2	129470-50160	RETAINER	1 1 1 1 1		

Remarks	
(1)	BOOST COMPEMSATOR TYPE. OPTIONAL PART. TO E/#00155 (4JH-DT,4JH-DTZ)

### ① Ref. No.

The Ref. No. in the list may not be accord with the Ref. No. on illustration.

(Ex.) Illustration No.

List head No.

1

1

(Befor change)



1

-1

(After change)

When interchangeable symbol N, R, and K, illustrations for new parts are sometimes omitted.

### ② Lev.(Level)

Indication and Meaning of Level

Level Hereunder is given the relation among the number of number (1,2,3) the level and the nominal parent-child relationship.

1 ----- Parent parts (Assembly parts)

2 ----- Child parts included in " 1 " (Semi-Assembly parts, component parts of Assembly parts.)

3 ----- Child parts included in " 2 ", Grand-child parts in terms of " 1 ".

(Component parts of Semi- Assembly parts.)

Note) A parts of non- sale parts are illustrated but not listed.

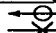
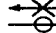
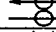
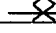
### ③ Change Mark

Change Mark "I" is given to the part for which a design change was made at this time.

The design change was not shown in the last published Parts Catalog.

### ④ Interchangeability Mark

In the case where a part change took place, one of the following interchangeability marks is indicated for that part.

Symbol	Interchangeability	Contents note
N	Old  New	New Part is interchangeable for Old Part but not interchangeable conversely.
Q	Old  New	New Part is not interchangeable for Old Part but interchangeable conversely.
R	Old  New	New Part is interchangeable for Old Part and vice versa.
S	Old  New	New Part is not interchangeable for Old Part and vice versa.
W		Part newly added.
Z		Part discontinued.
F		Not interchangeable single part but interchangeable by set of the related parts.
K		Changed only in quantity used.

### ⑤ Effective Machine No.

When a part is changed, Effective Machine No. of a Model for which the part is applicable is indication in each column of (A)- (F).

Product Symbol	Product No.	Product Symbol	Product No.
C	Clutch No. Compressor No.	M	Machine No.
D	Drive No.	T	Tractor No.
E	Engine No.	Note1) ※	Date

Note1) Date may follow the symbol in some cases. (Ex.) ※ 1996.01

Note2) As far as engine models shown by "XXX" are concerned, the modification of the parts could not be predicted or the engine models themselves could not be identified.

Note3) (A=E/#00185) means that the design change on the part has been effective for the model at the column (A) (in this case, for 4JH- DT) on and from E/#(Engine Serial Number) 00185.

### ⑥ Remarks Mark

Figures or alphabets (Symbols) are entered in the remark column.

The comments(remarks)on the pertinent parts are indicated in the lower part of the list by the same symbols as those stated above.

# Introduction

1. This parts catalog for 2GM20- YEU, 2GM20C- YEU, 2GM20F- YEU & 2GM20FC- YEU is published as a revised edition of the diesel engine.

	Parts catalog	Date of issue	Remarks
First edition	000Y00R4710	Nov., 1997	No need.
1st revised edition	000Y00R4711	Apr., 2000	

2. Standard finish color. : Metallic eole silver  
 Parts No. 977620- 10070 1 0 (Paked in a can)  
 977620- 40070 4 0 (Paked in a can)  
 TOR- 90090003 Spray(1 piece)
3. This parts catalog dose not contain the technical date needed for servicing.
4. The illustrations used in this parts catalog have been simplified for clarity.
5. The essential points list.(This engine numbers assembled at Yanmar Europe are as follows)

Name of diesel engine	2GM20-YEU	2GM20C-YEU	2GM20F-YEU	2GM20FC-YEU
Type	Vertical, water- cooled, four- cycle diesel engine			
No.of cylinder×Internal diameter(mm) ×Stroke length(mm)	2 × 75 × 72			
Continuous rated output (PS/rpm)	16 / 3400			
Combustion system	Direct injection			
Starting system	Erectric starting 12V- 1.0kw			
Power take- off position	Flywheel side			
Cooling system	Sea water cooling	Filterd fresh water cooling		
Lubricating system	Fully sealed, forced- feed lubrication			
New E/#	E02001			

6. The contents of this parts catalog are subject to change without prior notice.
7. Be sure to use only genuine Yanmar part for repairs. If other parts are used, the life of the engine may be shortened.

# CONTENTS

MODEL : 2GM20-YEU SERIES

PC NO : 0CR10-G47101

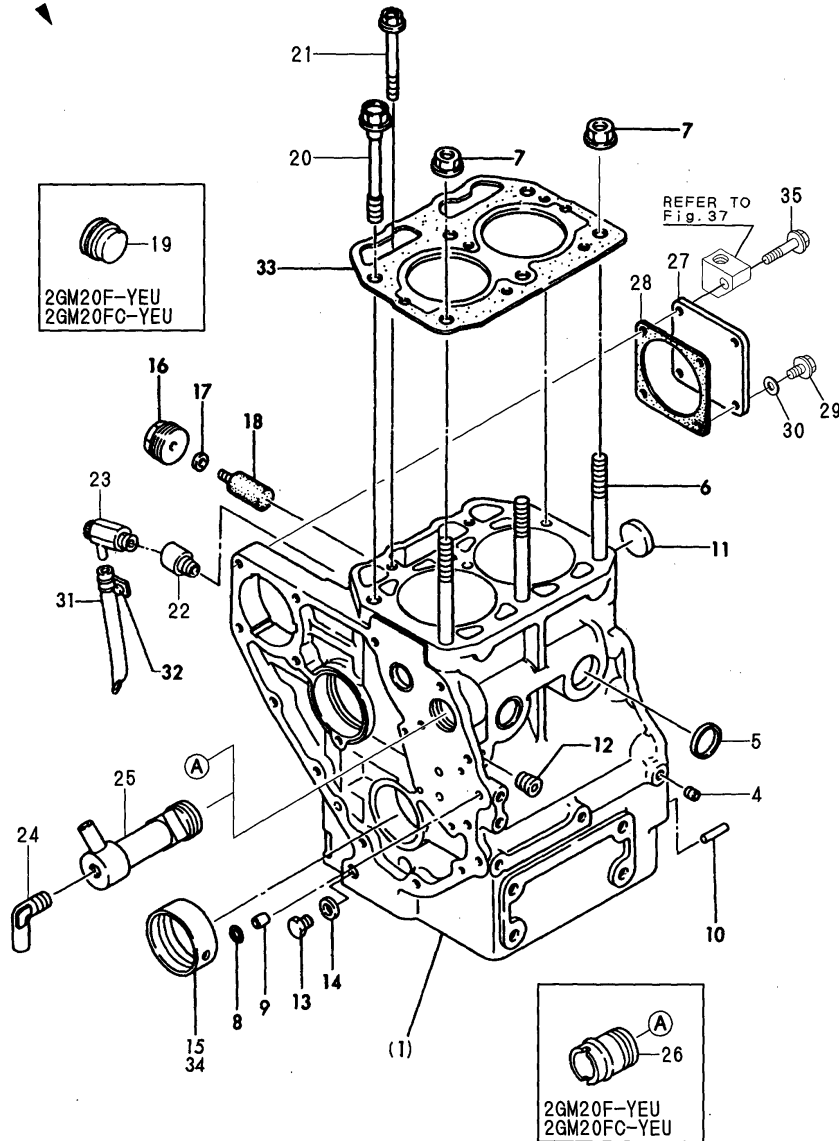
Fig.No.	GROUP NAME
2GM20-YEU	
1.	CYLINDER BLOCK
2.	GEAR HOUSING(2GM20,C-YEU)
3.	GEAR HOUSING(2GM20F,FC-YEU)
4.	FLYWHEEL HOUSING
5.	LUB. OIL SUMP
6.	MAIN METAL HOUSING
7.	BREATHER
8.	LABEL
9.	ENGINE LIFTER
10.	ENGINE BRACKET
11.	CYLINDER HEAD(2GM20,C-YEU)
12.	CYLINDER HEAD(2GM20F,FC-YEU)
13.	BONNET
14.	SUCTION MANIFOLD & MIXING ELBOW
15.	MIXING ELBOW(OPTIONAL)
16.	CAMSHAFT
17.	CRANKSHAFT & FLYWHEEL
18.	PISTON & CONNECTING ROD
19.	LUB.OIL PUMP & LUB.OIL STRAINER
20.	LUB.OIL PIPE & LUB.OIL DIPSTICK
21.	LUB.OIL WASTE PUMP(OPTIONAL)
22.	BILGE PUMP(STD,OPTIONAL)
23.	BILGE PUMP(DX,OPTIONAL)
24.	COOLING SEA WATER PUMP
25.	COOLING FRESH WATER PUMP
26.	COOLING FRESH WATER COOLER
27.	C.S.W.PIPE(2GM20,C-YEU)
28.	C.F.W.PIPE(2GM20F,FC-YEU)
29.	THERMOSTAT

Fig.No.	GROUP NAME
30.	C.S.W.PIPE(OPTIONAL)
31.	KINGSTON COCK(OPTIONAL)
32.	FUEL INJECTION PUMP
33.	FUEL FEED PUMP
34.	FUEL INJECTION VALVE
35.	FUEL STRAINER
36.	FUEL INJECTION PIPE
37.	FUEL PIPE
38.	FUEL RETURN PIPE
39.	FUEL TANK(OPTIONAL)
40.	GOVERNOR EQUIPMENT DEVICE
41.	CONTROL DEVICE
42.	ENGINE STOP DEVICE
43.	SPEED REMOTE CONTROL
44.	SINGLE LEVER CONTROL(OPTIONAL)
45.	COUPLING(OPTIONAL)
46.	CLUTCH
47.	STARTING MOTOR
48.	GENERATOR
49.	GENERATOR(OPTIONAL)
50.	WIRE HARNESS
51.	INSTRUMENT PANEL(A-TYPE,OPTIONAL)
52.	INSTRUMENT PANEL(A-TYPE,SAIL,O)
53.	INSTRUMENT PANEL(B-TYPE,OPTIONAL)
54.	INSTRUMENT PANEL(B-TYPE,NEW,OP)
55.	TOOL
56.	SPECIAL TOOL(OPTIONAL)
57.	REPAIR PARTS(OPTIONAL)
58.	REPAIR PARTS(2-POLE TYPE,OPTI)
59.	GASKET SET(OPTIONAL)

Fig.1. CYLINDER BLOCK

Fig. 1 シリンダブロック  
CYLINDER BLOCK

見出しNo. 1, 2は、見出しNo. (1) から19を含みます。  
1, 2 inc. (1) ~ 19



OCR10-G47101 1. CYLINDER BLOCK

(A)=2GM20-YEU  
(B)=2GM20C-YEU  
(C)=2GM20F-YEU

(D)=2GM20FC-YEU  
(E)=  
(F)=

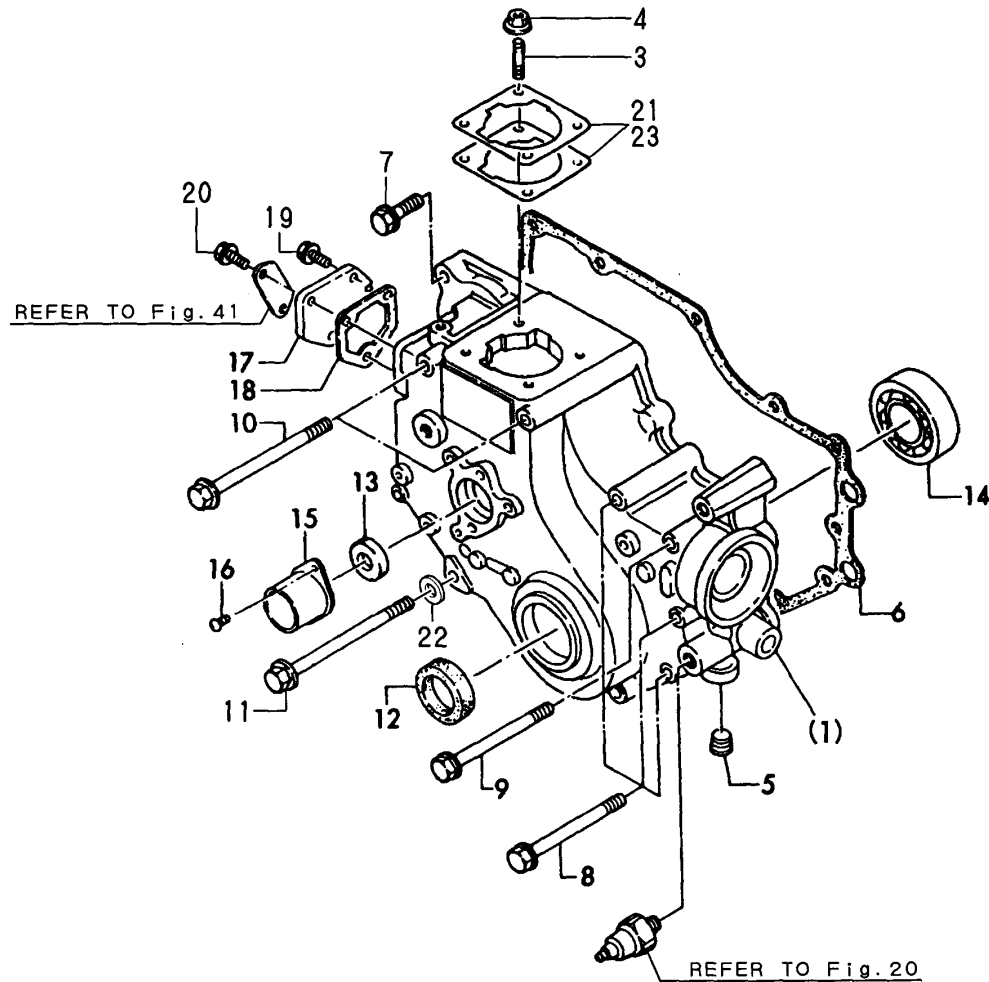
REF.	LEV.	PARTS NO.	DESCRIPTION	QTY						I	R
				(A)	(B)	(C)	(D)	(E)	(F)		
1	1	728277-01560	BLOCK ASSY, CYLINDER	1	1						
2	1	728297-01560	BLOCK ASSY, CYLINDER								
4	2	124060-01050	PLUG PT1/8	6	6	6	6				
5	2	105311-01090	PLUG 30 (SUS)	4	4	4	4				
6	2	121450-01210	STUD, CYL. HEAD	3	3	3	3				
7	2	121450-01220	NUT, CYL. HEAD	3	3	3	3				
8	2	24311-000100	O-RING 1A P-10.0	2	2	2	2				
9	2	124085-01900	GUIDE, O-RING	2	2	2	2				
10	2	129100-01580	PARALLEL PIN 8X16	2	2	2	2				
11	2	121450-01990	PLUG 30	1	1	1	1				
12	2	23873-020000	PLUG PT 1/4	1	1	1	1				
13	2	121450-01960	PLUG PF1/4	1	1	1	1				
14	2	121450-01980	GASKET	1	1	1	1				
15	2	121450-02100	MAIN METAL	1	1	1	1				
16	2	128270-09300	PLUG NPTF 1"	1	1						
17	2	123210-09310	PACKING	1	1						
18	2	27210-200300	ZINC, ANTI-CORROSIVE	1	1						
19	2	171051-01921	PLUG			1	1				
20	1	121450-01203	BOLT, CYL. HEAD	3	3	3	3				
21	1	129350-01230	BOLT, CYL. HEAD	2	2	2	2				
22	1	128270-01890	SPACER PT1/4	1	1	1	1				
23	1	120130-49350	COCK 1/4	1	1	1	1				
23-1	1	119620-49290	COCK ASSY 1/4	1	1	1	1				N
		(A=*2000.04)	(B=*2000.04)	(C=*2000.04)	(D=*2000.04)						
24	1	105583-49910	ELBOW (PT1/4)	1	1						
25	1	128270-01450	CONNECTOR, BY-PATH	1	1						
26	1	124160-49480	JOINT, PIPE			1	1				
27	1	124240-01871	COVER, HO-P	1	1	1	1				
28	1	124240-01883	GASKET, (NON-ASB.)	1	1	1	1				
29	1	26106-080142	BOLT M 8X 14 PLATED	4	4	4	4				
30	1	23414-080000	GASKET 8, ROUND	1	1	1	1				
31	1	23061-070300	PIPE 7X 300	1	1	1	1				
32	1	124460-77680	RETAINER	1	1	1	1				
33	1	128271-01911	GASKET, CYL. HEAD	1	1	1	1				
34	1	121450-02310	MAIN METAL 0.25US	1	1	1	1				1
35	1	26106-080322	BOLT M 8X 32 PLATED	1	1	1	1				

Remarks  
(1) UNDER SIZED (U.S.=0.25) PART.

Fig.2. GEAR HOUSING(2GM20,C-YEU)

Fig. 2 ギヤケース (2GM20/C-YEU)  
 GEAR HOUSING (2GM20/C-YEU)

見出しNo. 1は、見出しNo. (1) から5を含みます。  
 1 inc. (1) ~ 5



OCR10-G47101 2. GEAR HOUSING(2GM20,C-YEU)

(A)=2GM20-YEU (D)=2GM20FC-YEU  
 (B)=2GM20C-YEU (E)=  
 (C)=2GM20F-YEU (F)=

REF.	LEV.	PARTS NO.	DESCRIPTION	Q'TY						
				(A)	(B)	(C)	(D)	(E)	(F)	
1	1	728277-01610	HOUSING, ASSY GEAR	1	1					
3	2	26216-080222	STUD M 8X 22 PLATED	4	4					
4	2	26366-080002	NUT M 8	4	4					
5	2	124060-01050	PLUG PT1/8	1	1					
6	1	121575-01511	GASKET, (NON-ASB.)	1	1					
7	1	26106-080302	BOLT M 8X 30 PLATED	2	2					
8	1	26106-080852	BOLT M 8X 85 PLATED	5	5					
9	1	26106-080902	BOLT M 8X 90 PLATED	1	1					
10	1	26106-081152	BOLT M 8X115 PLATED	2	2					
11	1	26106-081152	BOLT M 8X115 PLATED	2	2					
12	1	121450-01801	SEAL TC25 40 8, OIL	1	1					
13	1	128270-01820	SEAL SC16 28 6, OIL	1	1					
14	1	24101-063050	BALL BEARING	1	1					
15	1	128170-01830	BRACKET (B), REAR	1	1					
16	1	26557-060102	SCREW 6X10	2	2					
17	1	121000-01850	COVER, CYL BLOCK	1	1					
18	1	121575-01861	GASKET, (NON-ASB.)	1	1					
19	1	26106-060122	BOLT M 6X 12 PLATED	1	1					
20	1	26106-060142	BOLT M 6X 14 PLATED	2	2					
21	1	124950-01951	SHIM SET	1	1					
22	1	23414-080000	GASKET 8, ROUND	4	4					
23	1	121450-01951	SHIM SET	1	1					

Remarks  
 (1)OPTIONAL