

Yamaha Yzf R1 99 Parts

Full download: <http://manualplace.com/download/yamaha-yzf-r1-99-parts/>

99 R1 Parts Catalog

YZF-R1L (4XVA)49 State US Model
YZF-R1LC (4XVB).....California Model

Owners Manual.....LIT-11626-12-32
Service Manual.....LIT-11616-11-25

Cowling Color Codes

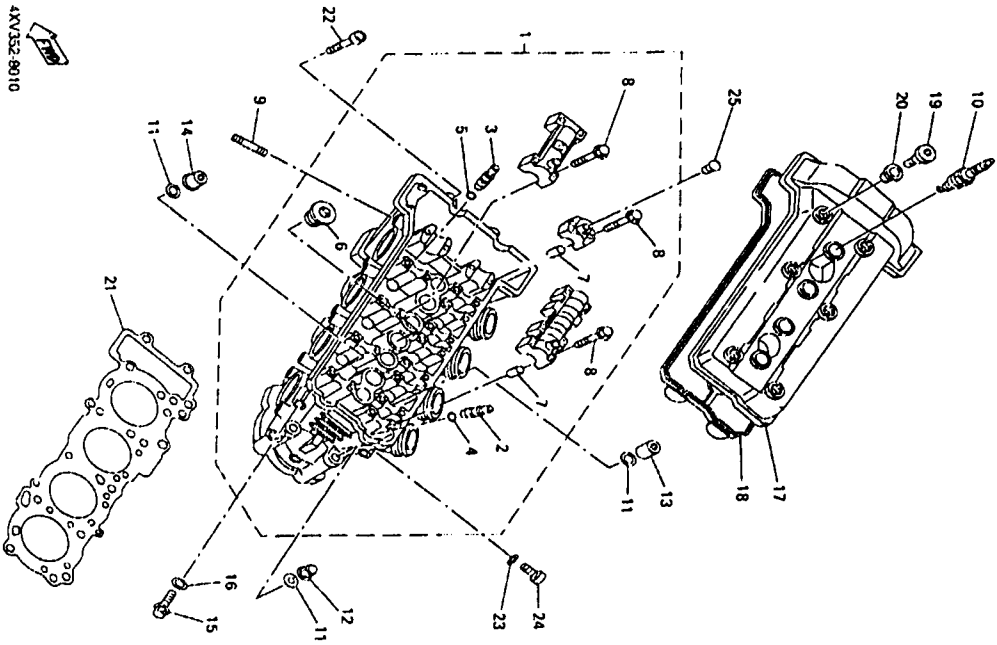
BWC1Blueish White Cocktail
DPBMC.....Deep Purplish Blue Metallic Cocktail
VRC1/BL1.....Vermillion Red Cocktail/Black
NOTE Part #'s are for 99 R1. These are not the right color codes for the 98 plastic.

INDEX

Camshaft – Chain.....A9	Intake.....B4
Carburetor.....B5-B6	Meter.....F4
Clutch.....B12,C1	Oil Cleaner.....B3
Cowling 1E9	Oil, Pump.....B2
Cowling 2E10, E11, E12	Radiator – Hose.....A12, B1
Crankcase.....B6	Rear Arm.....C11, C12
Crankcase Cover 1.....B9, B10	Rear Brake Caliper.....D12
Crankshaft – PistonA6	Rear Master Cylinder.....E7, E8
Cylinder.....A5	Rear Suspension.....D1
Electrical 1F8, F9	Rear Wheel.....D10, D11
Electrical 2F10, F11	Seat.....D7
ExhaustB7	Shift Cam – Fork.....C4
Fender.....C8, C9	Shift Shaft.....C5
Flasher Light.....F3	Side Cover.....C10
Frame.....C6, C7	Stand – Footrest.....E4, E5, E6
Front Brake Caliper.....D9	Starter.....B11
Front Fork.....D3, D4	Starting Motor.....F2
Front Master CylinderE2, E3	Steering.....D2
Front WheelD8	Steering Handle – Cable.....E1
Fuel Tank.....D5, D6	Tail Light.....F6
Generator.....F1	Transmission.....C2, C3
Handle Switch – Lever.....F7	Valve.....A7, A8
Headlight.....F5	Water Pump.....A10, A11

This INDEX is clickable. Click on the page number to be transported. ---Longview

CYLINDER



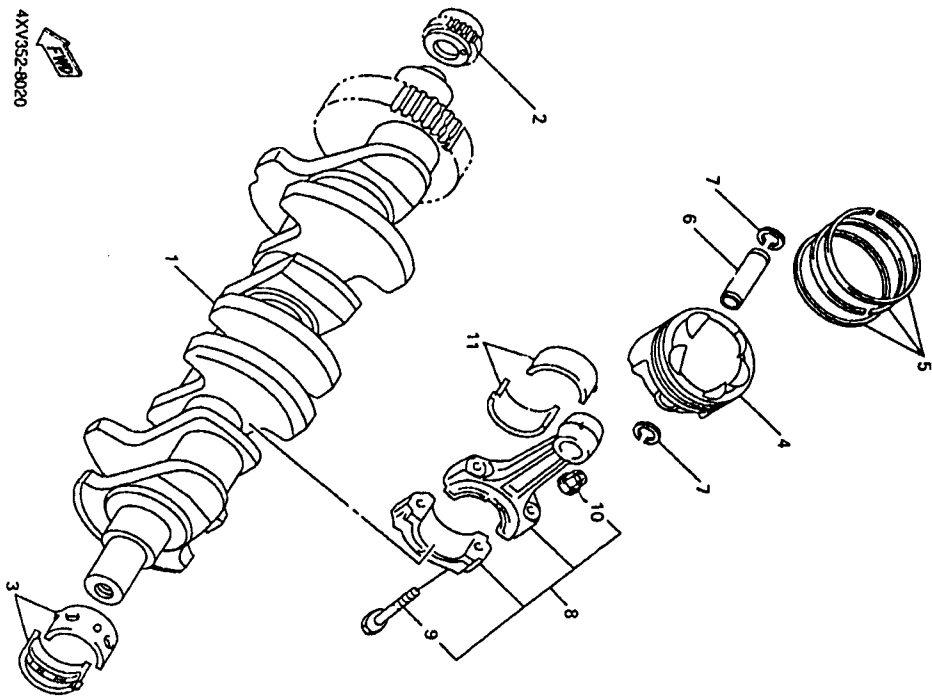
Ref. No.	Part Number	Description	Qty	Remarks
1	4XY-11101-00-00	CYLINDER HEAD ASSEMBLY	1	
2	3TL-11133-10-00	GUIDE, INTAKE VALVE	12	
3	1WG-11133-11-00	GUIDE, INTAKE VALVE	8	
4	93440-07149-00	CIRCLIP	12	
5	93440-10153-00	CIRCLIP	8	
6	90940-27129-00	PLUG, STRAIGHT SCREW	1	
7	91800-16023-00	PH, DOWEL	12	
8	90105-06384-00	BOLT, WASHER BASED	28	
9	95617-00625-00	BOLT, STUD	8	
10	94701-00318-00	PLUG, SPARK (NGK R CR6E)	4	
11	90201-103M4-00	WASHER, PLATE	10	
12	90176-10075-00	NUT, CROWN	2	
13	90179-10663-00	NUT	3	
14	90179-10693-00	NUT	5	
15	95027-08012-00	BOLT, FLANGE	1	
16	90430-08119-00	GASKET	1	
17	4XY-11191-00-00	COVER, CYLINDER HEAD 1	1	
18	4XY-11181-00-00	GASKET, HEAD COVER 1	1	
19	90109-068F0-00	RUBBER, MOUNT 1	6	
20	4KG-11111G-00-00	GASKET, CYLINDER HEAD 1	1	
21	4XY-11181-00-00	BOLT	2	
22	91317-06080-00	GASKET	4	
23	90430-06014-00	BOLT	4	
24	91317-06012-00	PLUG	2	
25	90338-08174-00			

UR

CONTENTS

CAMSHAFT - CHAIN	A9
CARBURETOR	B4-6
CLUTCH	B12 C1
CONVING 1	E9
CONVING 2	E16-12
CRANKCASE	B6
CRANKCASE COVER 1	B9-16
CRANKSHAFT - PISTON	A6
CYLINDER	A5
ELECTRICAL 1	F4-9
ELECTRICAL 2	F16-11
EXHAUST	E7
FLYWHEEL	C4-9
FRAMES	F3
FRONT BRAKE CALIPER	C4-7
FRONT FORK	D2-4
FRONT MASTER CYLINDER	D2-3
FRONT WHEEL	E2-3
FUEL TANK	D8
GENERATOR	F1
HANDLE SWITCH - LEVER	F7
HEADLIGHT	F5
IGNITE	F4
METER	F3
ONE CLAMER	B4
ON CLAMP	B2
ON TANK	A12 B1
ORATORION - HOSE	C11-12
REAR AXLE	D12
REAR BRAKE CALIPER	E7-4
REAR MASTER CYLINDER	D1
REAR SUSPENSION	D16-11
REAR WHEEL	D7
SEAT	D7
SHIRT CAM - FORK	C4
SHIRT SHAFT	C5
SKR COVER	C10
STAND - FOOTREST	E4-6
STARTER	B11
STARTING MOTOR	F2
STEERING HANDLE - CABLE	D2
TAILLIGHT	E1
TRANSMISSION	F5
VALVE	C2-3
WATER PUMP	A7-8
	A16-11

CRANKSHAFT - PISTON

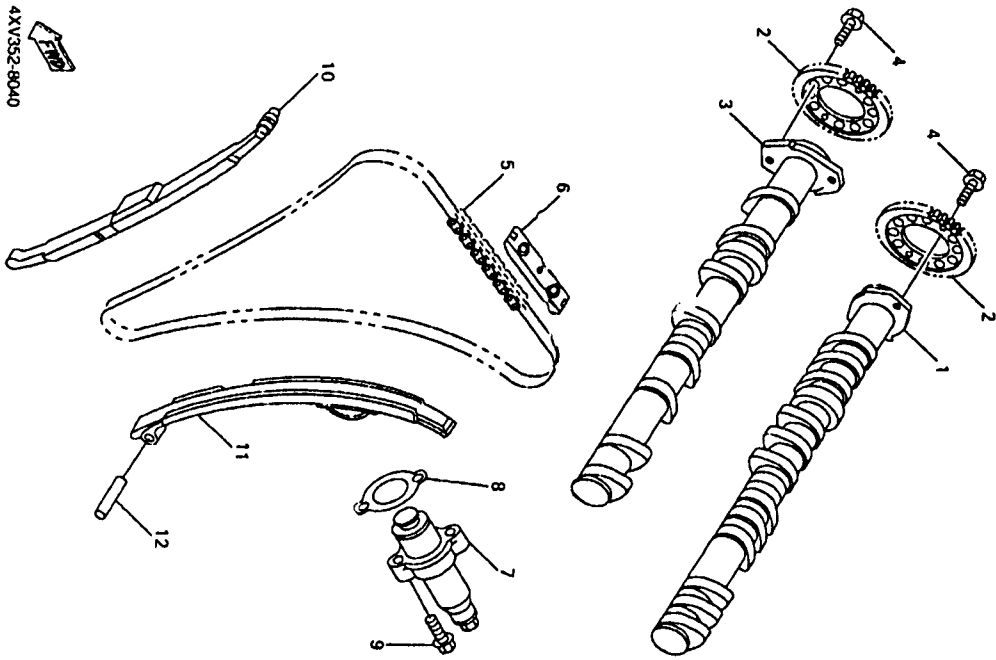


Ref. No.	Part Number	Description	Qty	Remarks
1	4XV-11411-00-00	CRANKSHAFT	1	
2	4XV-11549-00-00	SPROCKET, CAM CHAIN	1	
3	3GM-11416-00-00	PLANE BEARING, CRANKSHAFT 1	10	UR BLUE
	3GM-11416-10-00	PLANE BEARING, CRANKSHAFT 1	10	UR BLACK
	3GM-11416-20-00	PLANE BEARING, CRANKSHAFT 1	10	UR BROWN
	3GM-11416-80-00	PLANE BEARING, CRANKSHAFT 1	10	UR WHITE
4	4XV-11631-00-00	PISTON (STD)	4	UR PURPLE
5	4XV-11633-00-00	PISTON RING SET (STD)	4	
6	4XV-11633-00-00	PIN, PISTON	4	
7	90468-12069-00	CLIP	8	
8	4XV-11650-00-00	CONNECTING ROD ASSEMBLY	4	
9	4XV-11654-00-00	BOLT, CONNECTING ROD	2	
10	90179-08327-00	NUT	2	
11	3GM-11656-00-00	PLANE BEARING, CONNECTING ROD	8	UR BLUE
	3GM-11656-10-00	PLANE BEARING, CONNECTING ROD	8	UR BLACK
	3GM-11656-40-00	PLANE BEARING, CONNECTING ROD	8	UR WHITE
	3GM-11656-80-00	PLANE BEARING, CONNECTING ROD	8	UR PURPLE

CONTENTS

Part Name	Ref. No.
CRANKSHAFT - CHAIN	A9
CARBURETOR	B5-6
CLUTCH	B12 C1
COMPLING 1	E9
COMPLING 2	E16-12
CRANKCASE	B8
CRANKCASE COVER 1	B5-10
CRANKSHAFT - PISTON	A5
CYLINDER	A5
ELECTRICAL 1	F4-9
ELECTRICAL 2	F16-11
EXHAUST	B7
FLASHER LIGHT	C4-9
FLASHER LIGHT	F3
FRONT BRAKE CALIPER	C4-7
FRONT FORK	D4-4
FRONT MASTER CYLINDER	E2-3
FUEL TANK	D4-4
GENERATOR	F1
HANDLE SWITCH - LEVER	F7
HEADLIGHT	F5
HEADLIGHT	F5
METER	B4
METER	B4
OIL CLEANER	B3
RADIATOR - NOSE	A12 B1
REAR ARM	CT1-12
REAR BRAKE CALIPER	D12
REAR MASTER CYLINDER	E7-4
REAR SUSPENSION	D1
REAR WHEEL	D18-11
SEAT	D7
SHFT CAL - FORK	C4
SHFT SHAFT	C4
SIDE COVER	C10
STAND - FOOTREST	E4-4
STARTER	B11
STARTING MOTOR	F2
STEERING HANDLE - CABLE	D2
TAILLIGHT	E1
TRANSMISSION	F8
VALVE	C2-3
WATER PUMP	A7-4

YZFR1L



CAMSHAFT - CHAIN

Ref. No.	Part Number	Description	Qty	Remarks
1	4XV-12171-00-00	CAMSHAFT 1	1	
2	4XV-12176-00-00	SPROCKET, CAM CHAIN	2	
3	4XV-12181-00-00	CAMSHAFT 2	1	
4	90106-07342-00	BOLT, WASHER BASED	4	
5	94S91-49130-00	CHAIN	1	
6	SBE-12241-00-00	GUIDE, STOPPER 2	1	
7	4XV-12210-00-00	TENSIONER ASSEMBLY, CAM CHAIN	1	
8	4FMA-12213-00-00	GASKET, TENSIONER CASE	1	
9	95027-06025-00	BOLT, FLANGE	2	
10	4XV-12251-00-00	DAMPER, CHAIN 1	1	
11	4XV-12252-00-00	DAMPER, CHAIN 2	1	
12	93907-44190-00	PIN DOWEL	1	

CONTENTS

CAMSHAFT, CHAIN	A9
CARBURETOR	B3-4
CLUTCH	B12, C1
CONSOLE 1	E9
CONSOLE 2	E16-12
CRANKCASE	B8
CRANKCASE COVER 1	B9-10
CRANKSHAFT - FRONT	A6
CYLINDER	A5
ELECTRICAL 1	F8-9
ELECTRICAL 2	F16-11
EXHAUST	B7
FENDER	CH-5
FLASHER LIGHT	F3
FRAME	CH-7
FRONT BRAKE CALIPER	D9
FRONT FORK	DE-4
FRONT MASTER CYLINDER	E3-3
FRONT WHEEL	D8
FUEL TANK	DE-6
GENERATOR	F1
HANDLE SWITCH - LEVER	F5
HEADLAMP	F7
METAL	B4
METER	F4
OIL CLEANER	B3
OIL PUMP	B2
RADIATOR - HOSE	A12, B1
REAR AXLE	CT1-12
REAR BRAKE CALIPER	D12
REAR MASTER CYLINDER	E7-8
REAR SUSPENSION	D1
REAR WHEEL	D16-11
SEAT	D7
SHIFT CAM - FORK	C4
SHIFT SHAFT	C5
SIDE COVER	C10
STAND - FOOTREST	E4-6
STARTER	B11
STARTING MOTOR	F2
STEERING HANDLE - CABLE	D2
TAIL LIGHT	E1
TRANSMISSION	F6
VALVE	CS-3
WATER PUMP	A7-8
	A10-11