

# PARTS CATALOGUE

# XVS1100 (5PBB) EUROPE

---

2A5PB-300E1

**YAMAHA**  
**GENUINE**  
Parts & Accessories

A2

XVS1100  
PARTS CATALOGUE  
©2001 by Yamaha Motor Co., Ltd.  
1st Edition, Aug. 2001  
All rights reserved.  
Any reprinting or unauthorized use  
without the written permission of  
Yamaha Motor Co., Ltd.  
is expressly prohibited.

**A3**

# FOREWORD

This Parts Catalogue is related to the parts for the model(s) in the below frame. When you are ordering replacement parts, please refer to this Parts Catalogue and quote both part numbers and part names correctly.

XVS1100(5PBB)

1. Modifications or additions which have been made after issue of the Parts Catalogue will be announced in the Yamaha Parts News. It is advisable that you make necessary corrections to the Parts Catalogue according to the Yamaha Parts News.

2. Abbreviations  
The Following abbreviations are used in this Parts Catalogue.

“UR” Use specified parts number.  
 “UN” Use as many as needed.  
 “AP” Alternate Parts  
 “LM” Local Made (Parts need to be ordered locally)  
 “F#” Frame No. (Applicable machine No.)

3. Parts, which are to be supplied in an assembly, are listed with a dot(.) in front of the part name as shown below.

EXAMPLE  
 CARBURETOR ASSY  
 .JET, PILOT  
 .NOZZLE, MAIN

4. Number of component for assembly  
The numeral appearing to the right of each component part indicates the quantity of parts for each assembly unit.

EXAMPLE

PART NO.	DESCRIPTION	Q'TY	REMARKS
2F5-83310-60	FRONT FLASHER LIGHT ASSY	2	
115-83311-60	.BULB (6V-18W)	1	
1M1-83309-60	.REFLECTOR	1	

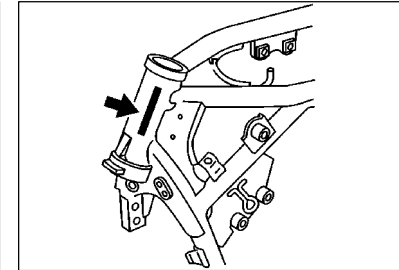
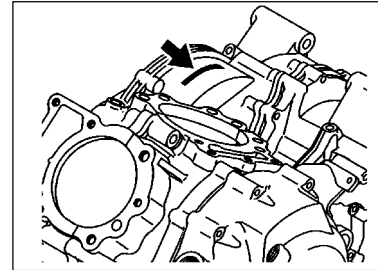
5. Applicable colors of graphics are represented in the “REMARKS” as shown below.

PART NO.	DESCRIPTION	Q'TY	REMARKS
2N4-24110-00-X5	FUEL TANK COMP.	1	MXR
3J1-24240-10	.GRAPHIC, FUEL TANK	1	FOR MXR

6. Applicable Serial No.

Engine Serial No.

Frame Serial No.

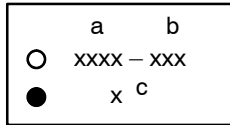


7. Note that the illustrations for reference in finding parts numbers, not to be used for assembling. When assembling, please use the applicable service manual.
8. The asterisk (\*) before a reference number indicates modification items after the first edition.

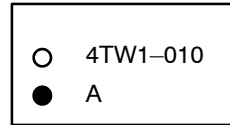
# MODEL LABEL

(1) A label called "Model Label" is affixed in the location as indicated in (3) below.  
When using this parts catalogue, please be sure to cross-refer the "model code – production code No." in the catalogue to the "model code – production code No." indicated on the Model Label affixed onto the product concerned.

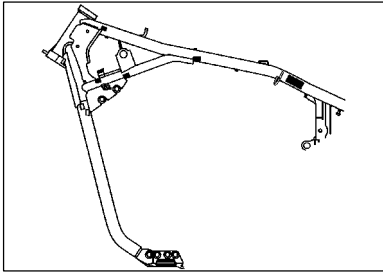
(2) "Model Label" Indication



a: Model Type Code  
b: Production Code No.  
c: Colouring Type



(3) Model Label Affixing Location



(4) Model Code – Production Code Number of Model Listed in This Parts Catalog

Model Code	Production Code No.	Country (destination)	Model Code	Production Code No.	Country (destination)
5PBB	010	AUSTRIA			
	020	BELGIUM			
	030	DENMARK			
		FINLAND			
		NORWAY			
	060	ENGLAND			
	070	GREECE			
	080	ITALY			
	090	HOLLAND			
100	PORTUGAL				
110	SWEDEN				

(5) Colouring Information

Model Code	Colouring type code	Colour code	Colour Name	Abbreviation
5PBB	A	0033	YAMAHA BLACK	YB
	B	0660	SILVER METALLIC 1	SM1

# CONTENTS

## ENGINE

CYLINDER HEAD .....	B2
CYLINDER .....	B4
CRANKSHAFT. PISTON .....	B5
VALVE .....	B6
CAMSHAFT. CHAIN .....	B7
OIL PUMP .....	B8
OIL CLEANER .....	B9
INTAKE .....	B10
CARBURETOR .....	B12
EXHAUST .....	B15
CRANKCASE .....	C3
CRANKCASE COVER 1 .....	C4
STARTER .....	C6
CLUTCH .....	C7
TRANSMISSION .....	C9
MIDDLE DRIVE GEAR .....	C10
SHIFT CAM. FORK .....	C12
SHIFT SHAFT .....	C13

## CHASSIS

FRAME .....	C14
FENDER .....	D2
SIDE COVER .....	D4
REAR ARM. SUSPENSION .....	D6
DRIVE SHAFT .....	D8
STEERING .....	D10
FRONT FORK .....	D11
FUEL TANK .....	D13
SEAT .....	D15

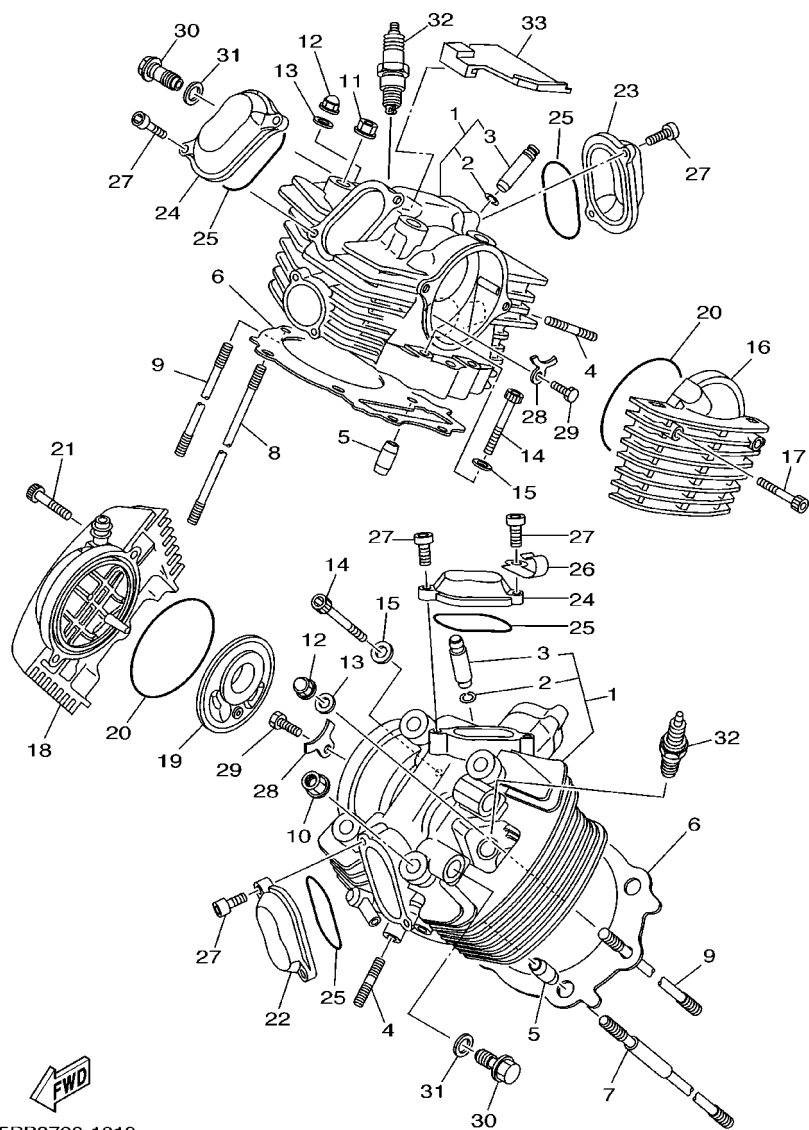
## INDEX

FRONT WHEEL .....	E2
FRONT BRAKE CALIPER .....	E3
REAR WHEEL .....	E4
REAR BRAKE CALIPER .....	E5
STEERING HANDLE. CABLE .....	E6
FRONT MASTER CYLINDER .....	E7
STAND. FOOTREST .....	E8
REAR MASTER CYLINDER .....	E10
GENERATOR .....	E11
FLASHER LIGHT .....	E12
METER .....	E13
HEADLIGHT .....	E14
TAILLIGHT .....	E15
HANDLE SWITCH. LEVER .....	F2
ELECTRICAL 1 .....	F3
ELECTRICAL 2 .....	F4

## INDEX

NUMERICAL INDEX .....	M1
-----------------------	----

**FIG. 1 CYLINDER HEAD**



5PB3700-1010

REF. NO.	PART NO.	DESCRIPTION	5PBB				REMARKS
1	5EL-11101-00	CYLINDER HEAD ASSY	2				
2	93440-14086	.CIRCLIP	2				
3	4X7-11133-10	.GUIDE, IN./EX. VALVE	2				
4	95617-08625	BOLT, STUD	4				
5	91817-30011	PIN, DOWEL	4				
6	5EL-11181-00	GASKET, CYLINDER HEAD 1	2				
7	4X7-11363-01	BOLT, CYLINDER HOLDING 3	4				
8	90116-12469	BOLT, STUD	4				
9	90116-10344	BOLT, STUD	2				
10	90179-12326	NUT	4				
11	90179-12325	NUT	4				
12	90176-10075	NUT, CROWN	2				
13	90201-101A4	WASHER, PLATE	2				
14	91314-08050	BOLT	4				
15	92907-08600	WASHER, PLATE	4				
16	5EL-1111H-00	COVER, CYLINDER HEAD SIDE 4	1				
17	91314-06035	BOLT	2				
18	5EL-11185-00	COVER, CYLINDER HEAD SIDE 1	1				
19	42X-11165-00	PLATE, BREATHER	1				
20	93210-92448	O-RING	2				
21	91314-06035	BOLT	2				
22	42H-11186-01	COVER, CYLINDER HEAD SIDE 2	1				
23	5EL-11187-00	COVER, CYLINDER HEAD SIDE 3	1				
24	4X7-11187-01	COVER, CYLINDER HEAD SIDE 3	2				
25	93210-62446	O-RING	4				
26	90465-10264	CLAMP	1				
27	91314-06016	BOLT	8				