

PARTS CATALOGUE

XV1600AP (5JA9) AUSTRALIA

2A5JA-700E1

YAMAHA
GENUINE
Parts & Accessories

A2

XV1600AP
PARTS CATALOGUE
©2001 by Yamaha Motor Co., Ltd.
1st Edition, Jul. 2001
All rights reserved.
Any reprinting or unauthorized use
without the written permission of
Yamaha Motor Co., Ltd.
is expressly prohibited.

A3

FOREWORD

This Parts Catalogue is related to the parts for the model(s) in the below frame. When you are ordering replacement parts, please refer to this Parts Catalogue and quote both part numbers and part names correctly.

XV1600AP(5JA9)

1. Modifications or additions which have been made after issue of the Parts Catalogue will be announced in the Yamaha Parts News.
It is advisable that you make necessary corrections to the Parts Catalogue according to the Yamaha Parts News.

2. Abbreviations

The Following abbreviations are used in this Parts Catalogue.

“UR” Use specified parts number.

“UN” Use as many as needed.

“AP” Alternate Parts

“LM” Local Made (Parts need to be ordered locally)

“F#” Frame No. (Applicable machine No.)

3. Parts, which are to be supplied in an assembly, are listed with a dot(.) in front of the part name as shown below.

EXAMPLE

CARBURETOR ASSY

.JET, PILOT

.NOZZLE, MAIN

4. Number of component for assembly

The numeral appearing to the right of each component part indicates the quantity of parts for each assembly unit.

EXAMPLE

PART NO.	DESCRIPTION	Q'TY	REMARKS
2F5-83310-60	FRONT FLASHER LIGHT ASSY	2	
115-83311-60	.BULB (6V-18W)	1	
1M1-83309-60	.REFLECTOR	1	

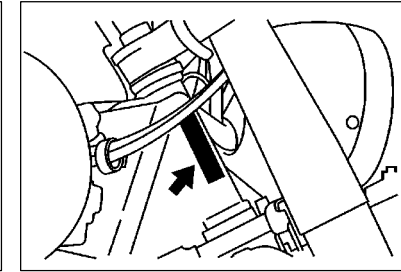
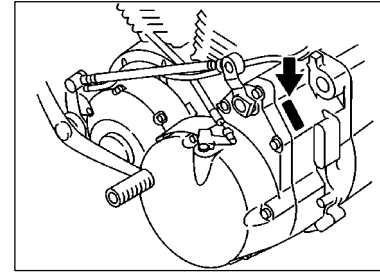
5. Applicable colors of graphics are represented in the “REMARKS” as shown below.

PART NO.	DESCRIPTION	Q'TY	REMARKS
2N4-24110-00-X5	.FUEL TANK COMP.	1	MXR
3J1-24240-10	.GRAPHIC, FUEL TANK	1	FOR MXR

6. Applicable Serial No.

Engine Serial No.

Frame Serial No.



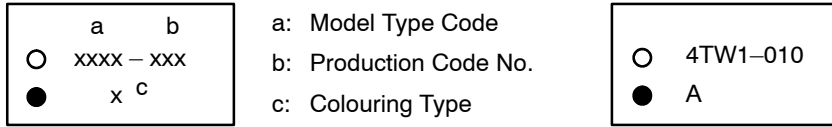
7. Note that the illustrations for reference in finding parts numbers, not to be used for assembling. When assembling, please use the applicable service manual.

8. The asterisk (*) before a reference number indicates modification items after the first edition.

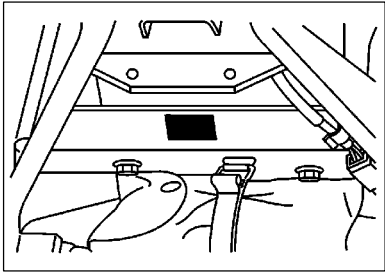
MODEL LABEL

(1) A label called "Model Label" is affixed in the location as indicated in (3) below. When using this parts catalogue, please be sure to cross-refer the "model code – production code No." in the catalogue to the "model code – production code No." indicated on the Model Label affixed onto the product concerned.

(2) "Model Label" Indication



(3) Model Label Affixing Location



(4) Model Code – Production Code Number of Model Listed in This Parts Catalog

Model Code	Production Code No.	Country (destination)	Model Code	Production Code No.	Country (destination)
5JA9	010	AUSTRALIA			

(5) Colouring Information

Model Code	Colouring type code	Colour code	Colour Name	Abbreviation
5JA9	A	0781	VERY DARK BLUE METALLIC A	VDBMA
	B	00KU	DEEP SCARLET	DPS

CONTENTS

ENGINE

CYLINDER HEAD	B2
CYLINDER	B3
CRANKSHAFT. PISTON	B4
VALVE	B5
CAMSHAFT. CHAIN	B6
OIL PUMP	B8
INTAKE	B10
CARBURETOR	B12
EXHAUST	B14
CRANKCASE	C2
CRANKCASE COVER 1	C4
STARTER	C7
CLUTCH	C8
TRANSMISSION	C10
MIDDLE DRIVE GEAR	C11
SHIFT CAM. FORK	C14
SHIFT SHAFT	C15

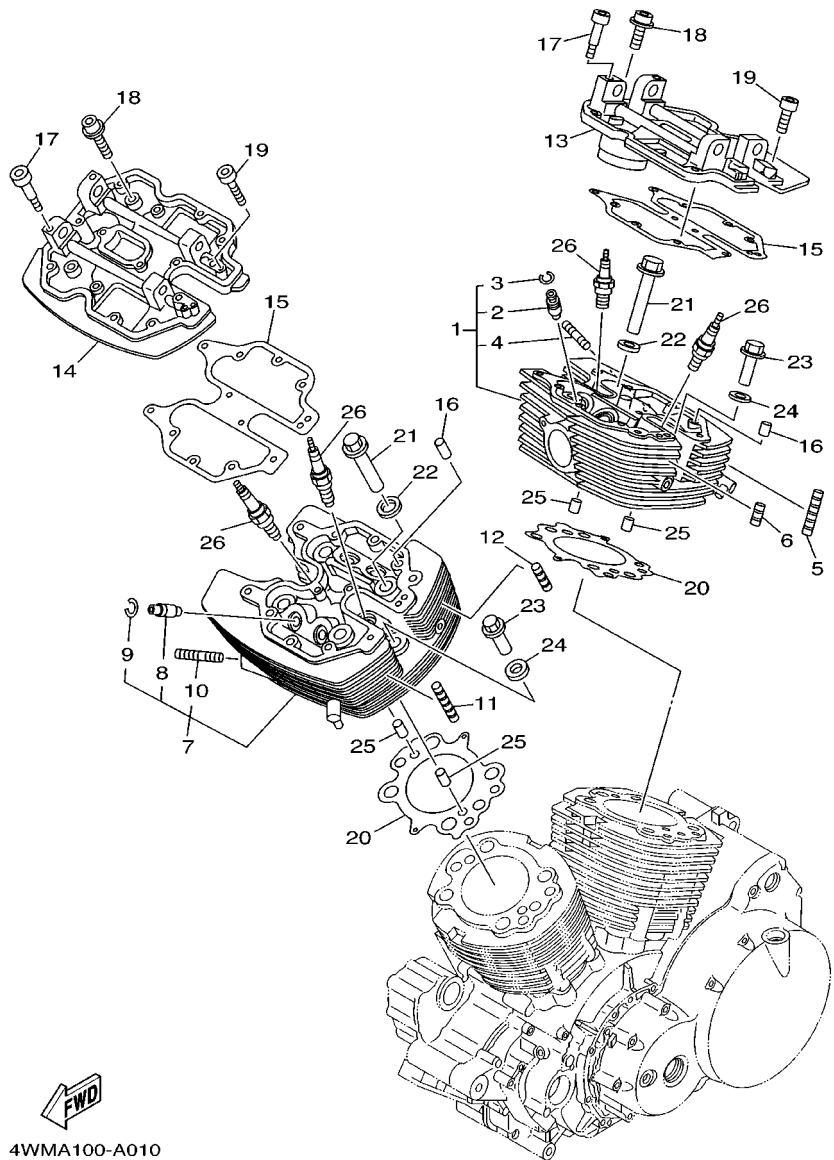
CHASSIS

FRAME	D2
FENDER	D4
SIDE COVER	D5
REAR ARM. SUSPENSION	D7
STEERING	D9
FRONT FORK	D10
FUEL TANK	D12
SEAT	D14
FRONT WHEEL	D15
FRONT BRAKE CALIPER	E2

REAR WHEEL	E3
REAR BRAKE CALIPER	E5
STEERING HANDLE. CABLE	E6
FRONT MASTER CYLINDER	E7
STAND. FOOTREST	E9
REAR MASTER CYLINDER	E11
GENERATOR	E13
FLASHER LIGHT	E14
METER	F2
HEADLIGHT	F3
TAILLIGHT	F4
HANDLE SWITCH. LEVER	F5
ELECTRICAL 1	F6
ELECTRICAL 2	F8

INDEX

NUMERICAL INDEX	M1
-----------------------	----



4WMA100-A010

FIG. 1 CYLINDER HEAD

REF. NO.	PART NO.	DESCRIPTION	5JA9	REMARKS
1	4WM-11101-00	CYLINDER HEAD ASSY	1	
2	4WM-11133-10	.GUIDE, INTAKE VALVE	4	
3	93440-12052	.CIRCLIP	4	
4	95617-08625	.BOLT, STUD	2	
5	4WM-11161-00	ABSORBER 1	5	
6	4WM-11162-00	ABSORBER 2	3	
7	4WM-11101-10	CYLINDER HEAD ASSY	1	
8	4WM-11133-10	.GUIDE, INTAKE VALVE	4	
9	93440-12052	.CIRCLIP	4	
10	95617-08625	.BOLT, STUD	2	
11	4WM-11161-00	ABSORBER 1	5	
12	4WM-11162-00	ABSORBER 2	3	
13	4WM-11131-00	HEAD, CYLINDER 3	1	
14	4WM-11141-00	HEAD, CYLINDER 4	1	
15	4WM-11182-00	GASKET, CYLINDER HEAD 2	2	
16	91808-16023	PIN, DOWEL	4	
17	90109-065G0	BOLT	4	
18	90109-067E6	BOLT	4	
19	91314-06045	BOLT	4	
20	4WM-11181-00	GASKET, CYLINDER HEAD 1	2	
21	4WM-11171-00	NUT, HOLDING	8	
22	4WM-11175-00	WASHER, HOLDING 1	8	
23	4WM-11172-00	NUT, HOLDING	4	
24	4WM-11176-00	WASHER, HOLDING	4	
25	90387-087A5	COLLAR	4	
26	94701-00262	PLÜĢ, ŠPARK (NGK DPR7EA9)	4	UR
	94701-00379	PLUG, SPARK (ND X22EPR-U9)	4	UR

FIG. 2 CYLINDER

REF. NO.	PART NO.	DESCRIPTION	5JA9	REMARKS
1	4WM-11191-00	COVER, CYLINDER HEAD 1	1	
2	4GL-15371-00	BREATHER	1	
3	90467-12053	CLIP	1	
4	4WM-11126-00	PIPE, BREATHER 3	1	
5	4WM-11166-00	PIPE, BREATHER 1	1	
6	90467-13042	CLIP	1	
7	4WM-11192-00	COVER, CYLINDER HEAD 2	1	
8	4WM-11193-00	GASKET, HEAD COVER 1	2	
9	91808-16023	PIN, DOWEL	4	
10	90110-06022	BOLT, HEXAGON SOCKET HEAD	12	
11	91314-06035	BOLT	4	
12	91314-06050	BOLT	8	
13	91314-06065	BOLT	4	
14	4WM-1111M-00	COVER 1	1	
15	4WM-1111N-00	COVER 2	1	
16	4WM-11194-00	GASKET, HEAD COVER 2	2	
17	91808-16023	PIN, DOWEL	4	
18	91314-06040	BOLT	10	
19	90110-06023	BOLT, HEXAGON SOCKET HEAD	2	
20	4WM-11311-00	CYLINDER 1	2	
21	4WM-11351-00	GASKET, CYLINDER	2	
22	90387-087A5	COLLAR	4	

