

# PARTS CATALOGUE

# XP500 (5GJ5) EUROPE

---

1A5GJ-300E2

**YAMAHA**  
**GENUINE**  
Parts & Accessories

XP500  
PARTS CATALOGUE  
©2002 by Yamaha Motor Co., Ltd.  
1st Edition, Feb. 2002  
All rights reserved.  
Any reprinting or unauthorized use  
without the written permission of  
Yamaha Motor Co., Ltd.  
is expressly prohibited.  
Printed in Japan

**A3**



**A4**

# FOREWORD

This Parts Catalogue is related to the parts for the model(s) in the below frame. When you are ordering replacement parts, please refer to this Parts Catalogue and quote both part numbers and part names correctly.

XP500(5GJ5)

1. Modifications or additions which have been made after issue of the Parts Catalogue will be announced in the Yamaha Parts News.  
It is advisable that you make necessary corrections to the Parts Catalogue according to the Yamaha Parts News.

2. Abbreviations

The Following abbreviations are used in this Parts Catalogue.

“UR” Use specified parts number.

“UN” Use as many as needed.

“AP” Alternate Parts

“LM” Local Made (Parts need to be ordered locally)

“F#” Frame No. (Applicable machine No.)

3. Parts, which are to be supplied in an assembly, are listed with a dot(.) in front of the part name as shown below.

EXAMPLE

CARBURETOR ASSY

.JET, PILOT

.NOZZLE, MAIN

4. Number of component for assembly

The numeral appearing to the right of each component part indicates the quantity of parts for each assembly unit.

EXAMPLE

PART NO.	DESCRIPTION	Q'TY	REMARKS
2F5-83310-60	FRONT FLASHER LIGHT ASSY	2	
115-83311-60	.BULB (6V-18W)	1	
1M1-83309-60	.REFLECTOR	1	

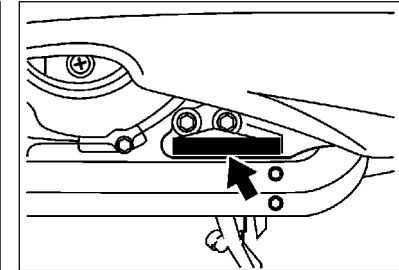
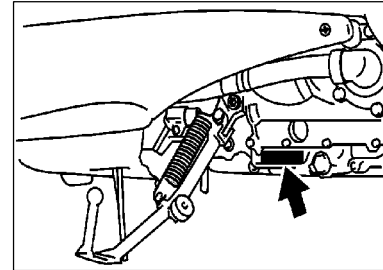
5. Applicable colors of graphics are represented in the “REMARKS” as shown below.

PART NO.	DESCRIPTION	Q'TY	REMARKS
2N4-24110-00-X5	FUEL TANK COMP.	1	MXR
3J1-24240-10	.GRAPHIC, FUEL TANK	1	FOR MXR

6. Applicable Serial No.

Engine Serial No.

Frame Serial No.



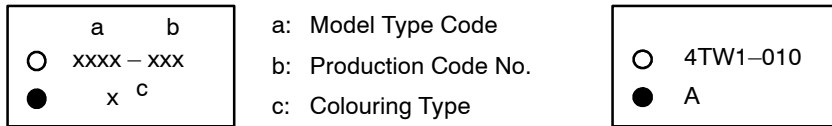
7. Note that the illustrations for reference in finding parts numbers, not to be used for assembling. When assembling, please use the applicable service manual.

8. The asterisk (\*) before a reference number indicates modification items after the first edition.

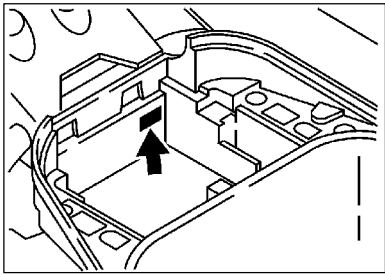
# MODEL LABEL

(1) A label called "Model Label" is affixed in the location as indicated in (3) below.  
When using this parts catalogue, please be sure to cross-refer the "model code – production code No." in the catalogue to the "model code – production code No." indicated on the Model Label affixed onto the product concerned.

(2) "Model Label" Indication



(3) Model Label Affixing Location



(4) Model Code – Production Code Number of Model Listed in This Parts Catalog

Model Code	Production Code No.	Country (destination)	Model Code	Production Code No.	Country (destination)
5GJ5	010	AUSTRIA			
	030	BELGIUM			
	040	SWITZERLAND			
	080	ENGLAND			
	090	GREECE			
	100	ITALY			
	110	HOLLAND			
	120	PORTUGAL			
	130	SWEDEN			

(5) Colouring Information

Model Code	Colouring type code	Colour code	Colour Name	Abbreviation
5GJ5	A	00AL	CALM YELLOW	CMY
	B	0755	SILVER 1	S1
	C	0781	VERY DARK BLUE METALLIC A	VDBMA
	D	0779	DULL RED METALLIC D	DRMD

# CONTENTS

## ENGINE

CYLINDER .....	B2
CRANKSHAFT. PISTON .....	B3
VALVE .....	B5
CAMSHAFT. CHAIN .....	B7
WATER PUMP .....	B8
RADIATOR. HOSE .....	B9
OIL PUMP .....	B11
INTAKE .....	B12
CARBURETOR .....	B14
EXHAUST .....	C2
CRANKCASE .....	C4
CRANKCASE COVER 1 .....	C5
CRANKCASE COVER 2 .....	C6
STARTER .....	C8
CLUTCH .....	C9
CLUTCH 2 .....	C10
TRANSMISSION .....	C12
SUB TRANSMISSION .....	C13

## CHASSIS

FRAME .....	C15
FENDER .....	D3
SIDE COVER .....	D4
REAR ARM. SUSPENSION .....	D7
STEERING .....	D8
FRONT FORK .....	D9
FUEL TANK .....	D11
SEAT .....	D12
SEAT 2 .....	D14

FRONT WHEEL .....	E2
FRONT BRAKE CALIPER .....	E3
REAR WHEEL .....	E4
REAR BRAKE CALIPER .....	E5
STEERING HANDLE. CABLE .....	E6
FRONT MASTER CYLINDER .....	E7
STAND. FOOTREST .....	E9
STAND.FOOTREST 2 .....	E11
LEG SHIELD .....	E13
WINDSHIELD .....	E15
GENERATOR .....	F3
FLASHER LIGHT .....	F4
METER .....	F5
HEADLIGHT .....	F6
TAILLIGHT .....	F7
HANDLE SWITCH. LEVER .....	F8
ELECTRICAL 1 .....	F9
ELECTRICAL 2 .....	F11

## INDEX

NUMERICAL INDEX .....	M1
-----------------------	----

**FIG. 1 CYLINDER**

REF. NO.	PART NO.	DESCRIPTION	5GJ5	REMARKS
1	5GJ-11101-00	CYLINDER HEAD ASSY	1	
2	95027-08012	.BOLT, FLANGE	1	
3	90430-08119	.GASKET	1	
4	95617-08620	BOLT, STUD	4	
5	90116-06475	BOLT, STUD	4	
6	90116-09584	BOLT, STUD	6	
7	93612-16254	PIN, DOWEL	2	
8	90201-090P4	WASHER, PLATE	6	
9	90179-09612	NUT	4	
10	90179-09489	NUT	2	
11	90110-06021	BOLT, HEXAGON SOCKET HEAD	2	
12	95027-06085	BOLT, FLANGE	1	
13	94701-00353	PLUG, SPARK (NGK CR7E)	2	
14	5GJ-11181-00	GASKET, CYLINDER HEAD 1	1	
15	5GJ-11190-00	COVER, CYLINDER HEAD 1	1	
16	5GJ-11166-00	PIPE, BREATHER 1	1	
17	90467-13071	CLIP	1	
18	90467-16181	CLIP	1	
19	5GJ-11193-00	GASKET, HEAD COVER 1	1	
20	5GJ-11195-00	GASKET	2	
21	99530-10116	PIN, DOWEL	2	
22	91317-06035	BOLT	10	
23	5GJ-11311-00	CYLINDER 1	1	
24	4BR-14251-00	NIPPLE	1	
25	5GJ-11351-00	GASKET, CYLINDER	1	
26	93612-16254	PIN, DOWEL	2	
27	46X-83591-00	THERMO UNIT	1	

