

# PARTS CATALOGUE

**WR250FP (5PH5) U49**

**WR250F (5PH6) EUROPE**

**WR250FP (5PH8) OCEANIA,CANADA,SOUTH AFRICA**

**YAMAHA**  
**GENUINE**  
Parts & Accessories

2A5PH-100E1

WR250FP/WR250F  
PARTS CATALOGUE  
©2001 by Yamaha Motor Co., Ltd.  
1st Edition, October 2001  
All rights reserved.  
Any reprinting or unauthorized use  
without the written permission of  
Yamaha Motor Co., Ltd.  
is expressly prohibited.

**A3**



A4

# FOREWORD

This Parts Catalogue is related to the parts for the model(s) in the below frame. When you are ordering replacement parts, please refer to this Parts Catalogue and quote both part numbers and part names correctly.

WR250FP(5PH5/5PH8),WR250F(5PH6)

1. Modifications or additions which have been made after issue of the Parts Catalogue will be announced in the Yamaha Parts News.  
It is advisable that you make necessary corrections to the Parts Catalogue according to the Yamaha Parts News.

2. Abbreviations  
The Following abbreviations are used in this Parts Catalogue.

“UR” Use specified parts number.

“UN” Use as many as needed.

“AP” Alternate Parts

“LM” Local Made (Parts need to be ordered locally)

“F#” Frame No. (Applicable machine No.)

3. Parts, which are to be supplied in an assembly, are listed with a dot(.) in front of the part name as shown below.

EXAMPLE

CARBURETOR ASSY

.JET, PILOT

.NOZZLE, MAIN

4. Number of component for assembly  
The numeral appearing to the right of each component part indicates the quantity of parts for each assembly unit.

EXAMPLE

| PART NO.     | DESCRIPTION              | Q'TY | REMARKS |
|--------------|--------------------------|------|---------|
| 2F5-83310-60 | FRONT FLASHER LIGHT ASSY | 2    |         |
| 115-83311-60 | .BULB (6V-18W)           | 1    |         |
| 1M1-83309-60 | .REFLECTOR               | 1    |         |

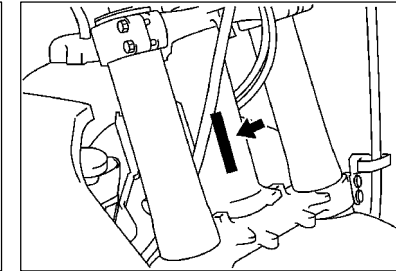
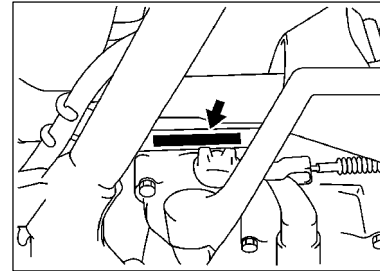
5. Applicable colors of graphics are represented in the “REMARKS” as shown below.

| PART NO.        | DESCRIPTION         | Q'TY | REMARKS |
|-----------------|---------------------|------|---------|
| 2N4-24110-00-X5 | .FUEL TANK COMP.    | 2    | MXR     |
| 3J1-24240-10    | .GRAPHIC, FUEL TANK | 1    | for MXR |

6. Applicable Serial No.

Engine Serial No.

Frame Serial No.



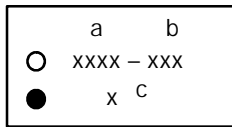
7. Note that the illustrations for reference in finding parts numbers, not to be used for assembling. When assembling, please use the applicable service manual.

8. The asterisk (\*) before a reference number indicates modification items after the first edition.

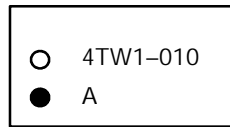
# MODEL LABEL

(1) A label called "Model Label" is affixed in the location as indicated in (3) below.  
When using this parts catalogue, please be sure to cross-refer the "model code – production code No." in the catalogue to the "model code – production code No." indicated on the Model Label affixed onto the product concerned.

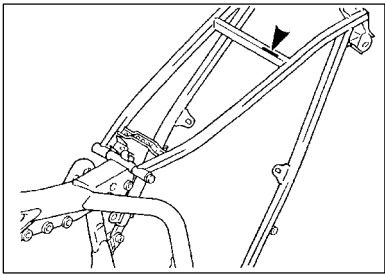
(2) "Model Label" Indication



a: Model Type Code  
b: Production Code No.  
c: Colouring Type



(3) Model Label Affixing Location



(4) Model Code – Production Code Number of Model Listed in This Parts Catalog

| Model Code | Production Code No. | Country (destination) | Model Code | Production Code No. | Country (destination) |  |
|------------|---------------------|-----------------------|------------|---------------------|-----------------------|--|
| 5PH5       | 010                 | U49                   | 5PH8       | 040                 | SOUTH AFRICA          |  |
| 5PH6       | 010                 | FRANCE                |            |                     |                       |  |
|            | 020                 | BELGIUM               |            |                     |                       |  |
|            | 030                 | GERMANY               |            |                     |                       |  |
|            | 040                 | SPAIN                 |            |                     |                       |  |
|            | 050                 | FINLAND               |            |                     |                       |  |
|            |                     | IRELAND               |            |                     |                       |  |
|            | 060                 | ENGLAND               |            |                     |                       |  |
|            | 070                 | GREECE                |            |                     |                       |  |
|            | 080                 | ITALY                 |            |                     |                       |  |
|            | 090                 | PORTUGAL              |            |                     |                       |  |
| 5PH8       | 100                 | SWEDEN                |            |                     |                       |  |
|            | 010                 | AUSTRALIA             |            |                     |                       |  |
|            | 020                 | CANADA                |            |                     |                       |  |
|            | 030                 | NEWZEALAND            |            |                     |                       |  |

(5) Colouring Information

| Model Code           | Colouring type code | Colour code | Colour Name                   | Abbreviation |
|----------------------|---------------------|-------------|-------------------------------|--------------|
| 5PH5<br>5PH6<br>5PH8 | A                   | 0538        | DEEP PURPLISH BLUE<br>SOLID E | DPBSE        |

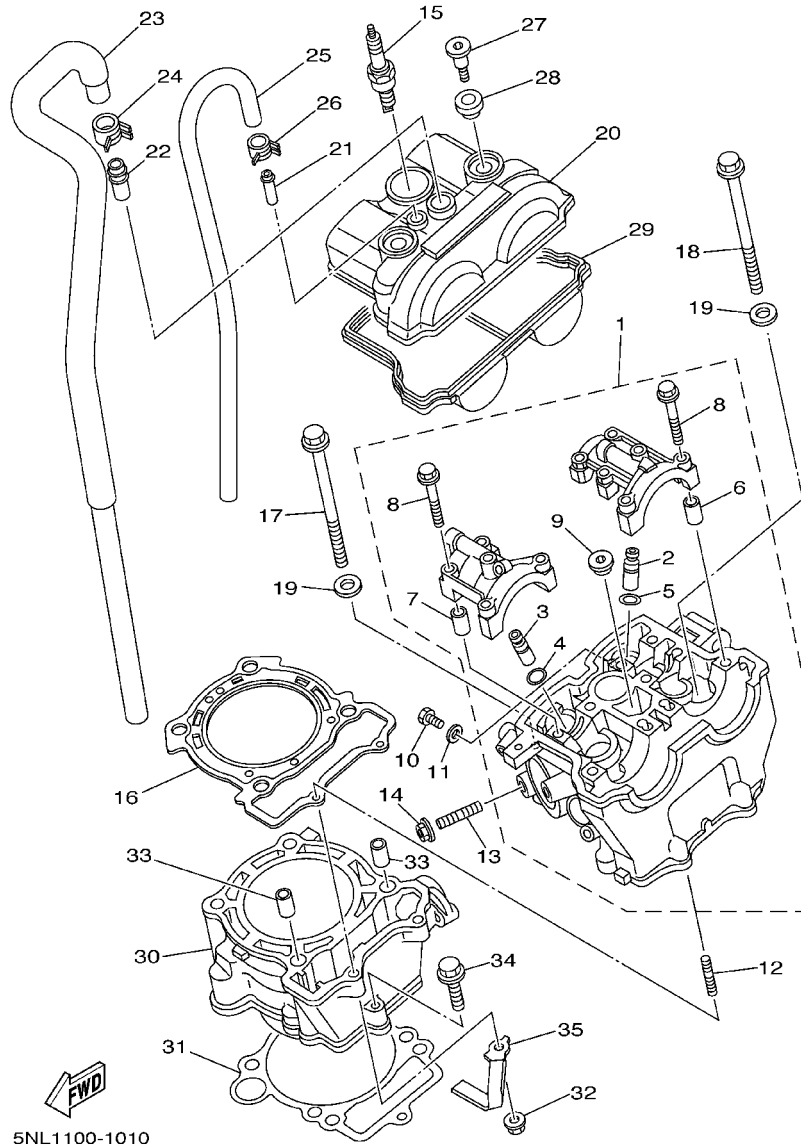
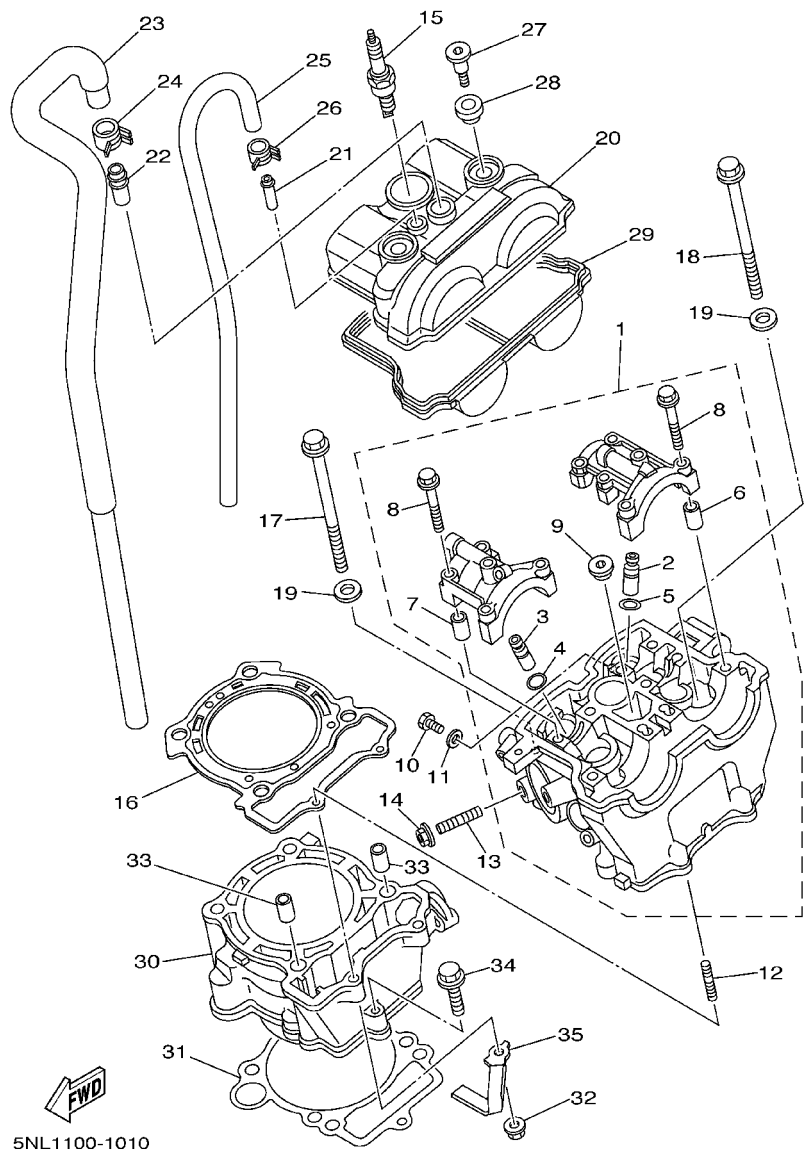


FIG. 1 CYLINDER

| REF. NO. | PART NO.     | DESCRIPTION               | 5PH5 | 5PH6 | 5PH8 | REMARKS |
|----------|--------------|---------------------------|------|------|------|---------|
| 1        | 5NL-11102-10 | CYLINDER HEAD ASSY        | 1    | 1    | 1    |         |
| 2        | 5NL-11133-10 | .GUIDE, INTAKE VALVE      | 3    | 3    | 3    |         |
| 3        | 5NL-11134-10 | .GUIDE, EXHAUST VALVE     | 2    | 2    | 2    |         |
| 4        | 93440-10153  | .CIRCLIP                  | 2    | 2    | 2    |         |
| 5        | 93440-07149  | .CIRCLIP                  | 3    | 3    | 3    |         |
| 6        | 91808-16023  | .PIN, DOWEL               | 2    | 2    | 2    |         |
| 7        | 91808-16023  | .PIN, DOWEL               | 2    | 2    | 2    |         |
| 8        | 90105-06027  | .BOLT, FLANGE             | 10   | 10   | 10   |         |
| 9        | 90340-12112  | .PLUG, STRAIGHT SCREW     | 1    | 1    | 1    |         |
| 10       | 95027-06012  | BOLT, FLANGE              | 1    | 1    | 1    |         |
| 11       | 90430-06014  | GASKET                    | 1    | 1    | 1    |         |
| 12       | 90116-06541  | BOLT, STUD                | 2    | 2    | 2    |         |
| 13       | 95617-08620  | BOLT, STUD                | 1    | 1    | 1    |         |
| 14       | 95707-08500  | NUT, FLANGE               | 1    | 1    | 1    |         |
| 15       | 94701-00330  | PLUG, SPARK (NGK CR8E)    | 1    | 1    | 1    | UR STD  |
|          | 94701-00329  | PLUG, SPARK (U24ESR-N)    | 1    | 1    | 1    | UR STD  |
|          | 94701-00318  | PLUG, SPARK (NGK R CR9E)  | 1    | 1    | 1    | AP      |
|          | 94701-00319  | PLUG, SPARK (ND U27ESR-N) | 1    | 1    | 1    | AP      |
| 16       | 5NL-11181-00 | GASKET, CYLINDER HEAD 1   | 1    | 1    | 1    |         |
| 17       | 90105-09555  | BOLT, FLANGE              | 2    | 2    | 2    |         |
| 18       | 90105-09002  | BOLT, FLANGE              | 2    | 2    | 2    |         |
| 19       | 90201-096J9  | WASHER, PLATE             | 4    | 4    | 4    |         |
| 20       | 5NL-11191-00 | COVER, CYLINDER HEAD 1    | 1    | 1    | 1    |         |
| 21       | 5BE-11167-00 | PIPE, BREATHER 2          | 1    | 1    | 1    |         |
| 22       | 371-11167-01 | PIPE, BREATHER 2          | 1    | 1    | 1    |         |
| 23       | 5BE-11166-00 | PIPE, BREATHER 1          | 1    | 1    | 1    |         |
| 24       | 90467-14015  | CLIP                      | 1    | 1    | 1    |         |

FIG. 1 CYLINDER



5NL1100-1010

| REF. NO. | PART NO.     | DESCRIPTION          | 5PH5 | 9PH5 | 8PH5 | REMARKS |
|----------|--------------|----------------------|------|------|------|---------|
| 25       | 90445-112K0  | HOSE (L285)          | 1    | 1    | 1    |         |
| 26       | 90467-11106  | CLIP                 | 2    | 2    | 2    |         |
| 27       | 90109-066F0  | BOLT                 | 2    | 2    | 2    |         |
| 28       | 4KG-1111G-00 | RUBBER, MOUNT 1      | 2    | 2    | 2    |         |
| 29       | 5NL-11193-00 | GASKET, HEAD COVER 1 | 1    | 1    | 1    |         |
| 30       | 5NL-11311-00 | CYLINDER 1           | 1    | 1    | 1    |         |
| 31       | 5NL-11351-00 | GASKET, CYLINDER     | 1    | 1    | 1    |         |
| 32       | 95704-06500  | NUT, FLANGE          | 2    | 2    | 2    |         |
| 33       | 93612-16254  | PIN, DOWEL           | 2    | 2    | 2    |         |
| 34       | 95027-06035  | BOLT, FLANGE         | 1    | 1    | 1    |         |
| 35       | 5JG-11387-00 | CLAMP, HOSE 1        | 1    | 1    | 1    |         |
|          |              |                      |      |      |      |         |
|          |              |                      |      |      |      |         |
|          |              |                      |      |      |      |         |
|          |              |                      |      |      |      |         |
|          |              |                      |      |      |      |         |