

PARTS CATALOGUE

WaveRunner XLT1200

XA1200A-A (F0V3/68NC/68N1)

XA1200A-A (F0V4/69EB/68N1)

MJ-XA1200T'02 (F0V5/68ND/68N1)

YAMAHA
GENUINE
Parts & Accessories

2AF0V-100E1

XA1200A-A/MJ-XA1200T
PARTS CATALOGUE
©2002 by Yamaha Motor Co., Ltd.
1st Edition, Feb. 2002
All rights reserved.
Any reprinting or unauthorized use
without the written permission of
Yamaha Motor Co., Ltd.
is expressly prohibited.

A3



A4

FOREWORD

This Parts Catalogue is related to the parts for the model(s) in the below frame. When you are ordering replacement parts, please refer to this Parts Catalogue and quote both part numbers and part names correctly.

XA1200A-A(F0V3/68NC/68N1), XA1200A-A(F0V4/69EB/68N1),
MJ-XA1200T'02(F0V5/68ND/68N1)

1. Modifications or additions which have been made after issue of the Parts Catalogue will be announced in the Yamaha Parts News.
It is advisable that you make necessary corrections to the Parts Catalogue according to the Yamaha Parts News.

2. Abbreviations

The following abbreviations are used in this Parts Catalogue.

“UR” Use specified parts number.

“UN” Use as many as needed.

“AP” Alternate Parts

“LM” Local Made (Parts need to be ordered locally)

“F#” Frame No. (Applicable machine No.)

3. Parts, which are to be supplied in an assembly, are listed with a dot(.) in front of the part name as shown below.
The numeral appearing to the right of each component part indicates the quantity of parts for each assembly unit.

EXAMPLE

PART NO.	DESCRIPTION	Q'TY	REMARKS
EU0-62280-00	DRAIN PLUG ASSY	2	
EU0-62282-00	.PLUG,DRAIN	1	

4. Quantity Column Information

NAME for Q'TY COLUMN	COUNTRY (destination)
USA	USA
CAN	CANADA
GENE	EXCEPT USA, CANADA, JAPAN
JPN	JAPAN

5. Note that the illustration for reference in finding parts numbers, not to be used for assembling. When assembling, please use the applicable service manual.
6. A part with “YMUS” in the remarks column can be obtained from YMUS (USA) and not from YAMAHA MOTOR CO.,LTD (JAPAN).

EXAMPLE

PART NO.	DESCRIPTION	Q'TY	REMARKS
EW2-U5160-00	ENGINE HATCH COMP.	2	.. YMUS
90601-168U7	BAND, HOSE	1	.. YMUS

ADDRESS:

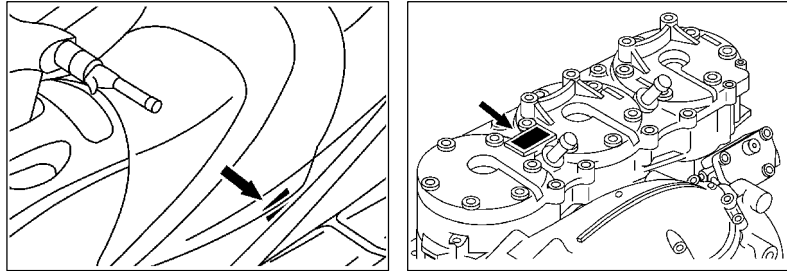
YAMAHA MOTOR CORPORATION U.S.A.
PARTS & ACCESSORY DIV.
6555 KATELLA AVENUE
CYPRESS, CALIFORNIA 90630 U.S.A.

FOREWORD

7. Applicable Starting Serial No. and Color Code

Starting Serial No.

Hull Serial No.	F0V-808801
Engine Serial No.	69E-0001901



Color Code

Parts No./Part Name	Color Code	Color Name	Abbreviation
F0V-U516N-10-P0 COVER, ENGINE HATCH	0770	DARK PURPLISH BLUE METALLIC F	DPBMF
F0V-U517B-10-P0 LID, ENGINE ROOM	0770	DARK PURPLISH BLUE METALLIC F	DPBMF
F0V-U517H-10-P0 LID, HATCH	0770	DARK PURPLISH BLUE METALLIC F	DPBMF

CONTENTS

CYLINDER. CRANKCASE 1	B2
CYLINDER. CRANKCASE 2	B4
CRANKSHAFT. PISTON	B5
INTAKE	B7
CARBURETOR	B9
CARBURETOR 2	B13
OIL PUMP	C2
EXHAUST 1	C4
EXHAUST 2	C7
FUEL	C9
JET UNIT 1	C10
JET UNIT 2	C13
JET UNIT 3	C14
GENERATOR	C15
STARTING MOTOR	D2
ELECTRICAL 1	D3
ELECTRICAL 2	D6
ENGINE HATCH 1	D7
ENGINE HATCH 2	D8
HULL. DECK	D10

GUNWALE. MAT	D12
VENTILATION	D13
SEAT. UNDER LOCKER	D14
OIL TANK	E2
FUEL TANK	E3
EXHAUST 3	E5
CONTROL CABLE	E6
STEERING 1	E9
STEERING 2	E11
GRAPHICS	E12
IMPORTANT LABELS	E13
IMPORTANT LABELS 2	E14
IMPORTANT LABELS 3	E15
REPAIR KIT 1	F2
REPAIR KIT 2	F4

INDEX

NUMERICAL INDEX	M1
-----------------------	----