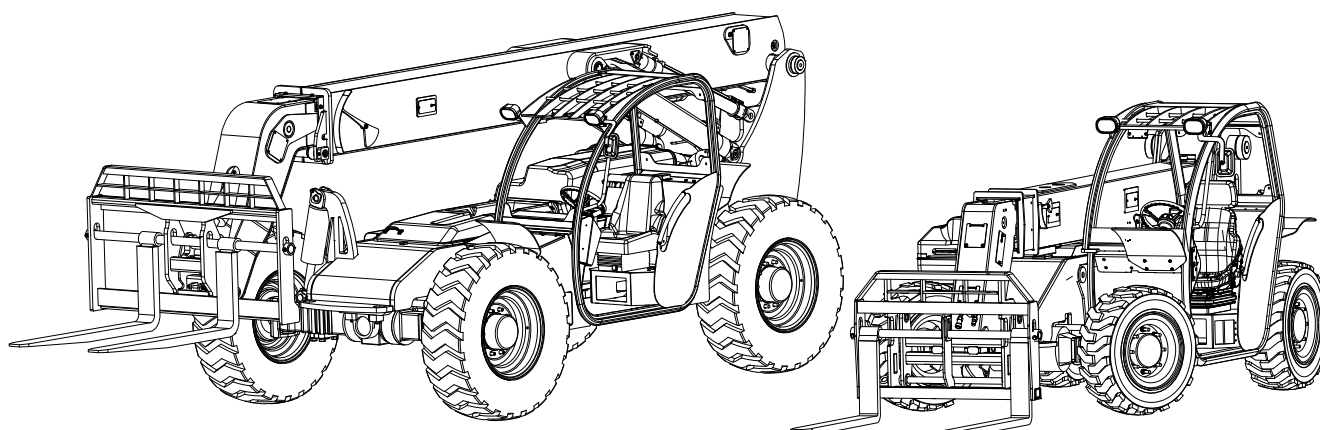




Service Manual

XR Forward Reach

Forklifts



Xtreme Manufacturing, LLC
1415 West Bonanza Road
Las Vegas, NV 89106
(702) 858-2404
(702) 646-2196 (fax)
www.xtrememanufacturing.com

IMPORTANT

Read and understand this manual before
operating or performing maintenance on these forklifts.

Copyright © 2011 – Xtreme Manufacturing, LLC

Ask your supervisor to explain any operation, maintenance, or safety information that you do not fully understand.

⚠ WARNING

Untrained personnel can cause death or severe injury. Do not operate or perform maintenance on a forklift until you have read and understand:

- The Operation and Safety Manual for the forklift.
- Chapter 2 of this Service Manual.
- The safety labels affixed to the forklift.
- Your employer's applicable work rules regarding the safety, operation, and maintenance of the forklift.
- Applicable federal, state, or local government regulations.

⚠ WARNING

Untrained personnel can cause death or severe injury. Do not operate or work on a forklift until you have been trained in the safe operation and maintenance of the forklift.

– REPLACEMENT OF MANUALS –

Contact Xtreme Manufacturing, LLC, to obtain replacement Operation and Safety Manuals, Owner's Service Manuals, Service Manuals, or Illustrated Parts Catalogs.

Xtreme Manufacturing, LLC
1415 West Bonanza Road
Las Vegas, NV 89106
(702) 851-3750
xtrememanufacturing.com

List of Effective Pages

This manual consists of 280 pages as listed below:

Front cover page
Inside front cover page
Title page
Pages A through B
Pages i through x
Pages 1-1 through 1-32
Pages 2-1 through 2-22
Pages 3-1 through 3-6
Pages 4-1 through 4-6
Pages 5-1 through 5-34
Pages 6-1 through 6-14
Pages 7-1 through 7-8
Pages 8-1 through 8-48
Pages 9-1 through 9-22
Pages 10-1 through 10-32
Pages 11-1 through 11-6
Pages 12-1 through 12-6
Pages Index 1 through Index 9
Pages A-1 through A-20
Inside back cover page
Back cover page

Copyright © 2011 – Xtreme Manufacturing Co.

Table of Contents

<u>PARA.</u>	<u>TITLE</u>	<u>PAGE</u>
	List of Effective Pages	A
	Service Bulletins	B
	Table of Contents	i
	List of Illustrations	vi
	List of Tables	ix
	SECTION 1 – GENERAL INFORMATION & SPECIFICATIONS	1-1
1-1	Scope of Manual	1-1
1-2	Applicability	1-1
1-3	Service Bulletins.....	1-1
1-4	Related Technical Documentation	1-2
1-5	Forklift Nomenclature	1-2
1-6	Component Data Plates	1-9
1-7	Lubricants and Fluids.....	1-13
1-8	Filters and Strainers	1-14
1-9	Forklift and Engine Specifications.....	1-15
1-10	Torque Wrench Use	1-29
1-11	Cap Screw Torque Values	1-29
	SECTION 2 – MAINTENANCE & OPERATION SAFETY	2-1
2-1	General	2-1
2-2	Safety Signal Words.....	2-1
2-3	Notes	2-1
2-4	Safety Symbols	2-2
2-5	Lockout/Tagout Procedure.....	2-6
2-6	General Maintenance Precautions.....	2-7
2-7	Viton Seals	2-7
2-8	Using Compressed Air Safely	2-8
2-9	Battery Handling and Maintenance.....	2-8
2-10	Engine Operation and Maintenance	2-10
2-11	Fuel Handling and Maintenance	2-11
2-12	California Proposition 65 Warnings.....	2-11
2-13	Functional Tests.....	2-11
2-14	Safe Operation Checklist	2-12
2-15	Functional Test Checklist.....	2-13
2-16	Load Handling	2-14

Table of Contents – Cont.

<u>PARA.</u>	<u>TITLE</u>	<u>PAGE</u>
2-17	Picking Up a Load.....	2-16
2-18	Carrying a Load.....	2-16
2-19	Placing a Load	2-16
2-20	Load Shift	2-17
2-21	Proper Use of Forks.....	2-17
2-22	Prohibited Practices	2-17
2-23	Operator Hand Signals	2-18
2-24	Safety Labels	2-19
SECTION 3 – MAINTENANCE SCHEDULE		3-1
3-1	Establishing a Preventive Maintenance Program.....	3-1
3-2	Long-Interval Maintenance Requirements.....	3-6
SECTION 4 – AXLE CYLINDER AND OUTRIGGER LUBRICATION.....		4-1
4-1	General Maintenance Safety	4-1
4-2	Using a Grease Gun	4-1
4-3	Lubricate Axle Cylinders and Outriggers	4-2
SECTION 5 – ENGINE		5-1
5-1	General Maintenance Safety	5-1
5-2	Check Engine Oil Level.....	5-1
5-3	Check Engine Coolant Level.....	5-3
5-4	Check for Oil and Coolant Leaks	5-5
5-5	Check for Water in Fuel-Water Separator.....	5-6
5-6	Empty Air Filter Dust Cup	5-8
5-7	Check Condition and Tension of Drive Belts	5-10
5-8	Change Engine Oil.....	5-10
5-9	Replace Oil Filters.....	5-13
5-10	Replace Fuel Filter	5-16
5-11	Check Specific Gravity of Coolant	5-18
5-12	Drain and Flush Cooling System	5-20
5-13	Replace Air Filter.....	5-22
5-14	Check Air Filter.....	5-24
5-15	Check Condition and Tension of Drive Belts	5-25
5-16	Check and Adjust Valve Tip Clearances.....	5-27
5-17	Check Engine Hoses and Connections	5-29

Table of Contents – Cont.

<u>PARA.</u>	<u>TITLE</u>	<u>PAGE</u>
5-18	Check Radiator Hoses and Connections	5-30
5-19	Check Engine Wiring and Connections	5-31
5-20	Check for Oil, Coolant, and Fuel Leaks	5-32
SECTION 6 – TRANSMISSION, AXLES, & DRIVE SHAFTS		6-1
6-1	General Maintenance Safety	6-1
6-2	Using a Grease Gun	6-1
6-3	Lubricate Axle Grease Fittings.....	6-2
6-4	Lubricate Drive Shafts.....	6-4
6-5	Replace Transmission Filters and Fluids	6-6
6-6	Check Axle Oil Level	6-8
6-7	Check Wheel End Oil Level	6-11
6-8	Drain and Fill Axle Wheel End	6-13
SECTION 7 – WHEELS & TIRES		7-1
7-1	General Maintenance Safety	7-1
7-2	Check Wheel Lug Nut Torque.....	7-1
7-3	Inspect Wheel/Tire Assembly	7-3
7-4	Replace Wheel/Tire Assembly.....	7-4
7-5	Replace Tire.....	7-7
SECTION 8 – HYDRAULIC SYSTEM.....		8-1
8-1	General Maintenance Safety	8-1
8-2	Hydraulics Maintenance Safety and Precautions	8-1
8-3	Handling Hydraulic Fluid	8-2
8-4	Making Leak-Free Connections	8-2
8-4-1	Hose and Tubing Installation Practices.....	8-2
8-4-2	Operating Conditions	8-2
8-4-3	Maintenance Practices.....	8-3
8-5	Keeping the Hydraulic System Clean	8-4
8-6	Check Hydraulic Fluid Level	8-6
8-7	Change Hydraulic Fluid.....	8-8
8-8	Replace Suction Strainer	8-10
8-9	Clean Hydraulic Reservoir Strainer.....	8-12
8-10	Replace Air Breather.....	8-14
8-11	Replace High-Pressure Filter.....	8-16
8-12	Replace Return Line Filter	8-19

Table of Contents – Cont.

<u>PARA.</u>	<u>TITLE</u>	<u>PAGE</u>
8-13	Taking Hydraulic Fluid Sample	8-21
8-14	Replacing a Hose	8-24
8-15	Tightening Loose Fittings	8-27
8-16	Replace Cartridge Valve	8-27
8-17	Replace Cartridge Valve Solenoid	8-30
8-18	Location of Hydraulic Components	8-32
8-19	Distribution Manifold Hose Connections	8-32
8-20	Maintenance Requirements for Failed Pump	8-47
SECTION 9 – ELECTRICAL SYSTEM		9-1
9-1	General Maintenance Safety	9-1
9-2	Battery Safety	9-1
9-3	Battery Description	9-3
9-4	Battery Cable Description	9-3
9-5	Check Condition of Battery and Cables	9-3
9-6	Replace Battery	9-4
9-7	Inspect and Clean Battery	9-8
9-8	Install Auxiliary Battery	9-9
9-9	Electrical Center Assembly	9-11
9-10	Engine Relay Assembly	9-16
9-11	Replace a Relay	9-18
9-12	Replace a Fuse	9-20
SECTION 10 – BOOM & ATTACHMENTS		10-1
10-1	General Maintenance Safety	10-1
10-2	Using a Grease Gun	10-1
10-3	Boom and Attachment Lubrication	10-2
10-4	Lubricate Boom Extend Chain	10-6
10-5	Inspect Boom Chains	10-7
10-5-1	Chain Nomenclature	10-8
10-5-2	Visually Inspect Chain	10-8
10-5-3	Measure Chain Edge Wear	10-11
10-5-4	Measure Chain Elongation	10-13
10-6	Check and Adjust Boom Chain Tension	10-15
10-7	Slide Blocks	10-16
10-8	Inspect Slide Blocks	10-16
10-9	Replace Slide Blocks	10-20

Table of Contents – Cont.

<u>PARA.</u>	<u>TITLE</u>	<u>PAGE</u>
10-10	Inspect Boom Rollers	10-21
10-11	Fork Nomenclature.....	10-24
10-12	Measure Fork Flank Wear	10-26
10-13	Fork Inspection.....	10-28
10-14	Manually Retracting and Lowering Boom	10-29
SECTION 11	– CHECK-OUT PROCEDURES.....	11-1
11-1	Check Operation of Rear Axle Stabilization System.....	11-1
SECTION 12	– STORAGE & TRANSPORTATION	12-1
12-1	General Maintenance Safety	12-1
12-2	Preparing Engine for Long-Term Storage.....	12-1
12-3	Preparing Forklift for Long-Term Storage	12-4
12-4	Transporting Forklift	12-5
APPENDIX	– MAINTENANCE FORMS AND SAFETY TAGS	A-1
A-1	Preventive Maintenance and History Logs	A-1
A-2	Pre-Operation Checklist.....	A-1
A-3	Safety Tags	A-1
	Maintenance Schedule.....	A-2
	Maintenance History Log	A-8
	Fork Inspection Log.....	A-11
	Pre-Operation Checklist.....	A-13
	Grease Fittings List	A-15
	Danger Tags	A-16
	Condition Tags	A-17
	Notes	A-18

List of Figures

<u>FIGURE</u>	<u>TITLE</u>	<u>PAGE</u>
1-1	Forklift Nomenclature.....	1-3
1-2	Forklift Covers.....	1-6
1-3	Forklift Cab.....	1-7
1-4	Front Control Panel.....	1-8
1-5	Side Control Console.....	1-9
1-6	Location of Chassis and Engine Data Plates.....	1-10
1-7	Location of Transmission Data Plates.....	1-11
1-8	Location of Axle Data Plates.....	1-12
1-9	SAE Grade 8 Bolt Markings.....	1-31
2-1	Danger and Condition Tags.....	2-6
2-2	Battery Disconnect Switch.....	2-7
2-3	Operator Hand Signals.....	2-18
2-4	Safety Labels.....	2-19
3-1	Forklift Hourmeter.....	3-1
4-1	Front and Rear Axle Cylinder Grease Fittings.....	4-3
4-2	Outrigger Grease Fittings – XR1245/1255/1267/1270/2045/2450.....	4-4
5-1	Engine Oil Fill Cap and Dipstick.....	5-2
5-2	Coolant Level Indicator.....	5-4
5-3	Radiator.....	5-5
5-4	Fuel-Water Separator.....	5-7
5-5	Engine Air Filter Assembly.....	5-9
5-6	Oil Drain Plug and Dipstick.....	5-12
5-7	Recommended Engine Oil Viscosity Grades.....	5-12
5-8	Element-Type Oil Filter.....	5-14
5-9	Canister-Type Oil Filter.....	5-15
5-10	Fuel Filter Element.....	5-17
5-11	Coolant Recovery Tank and Radiator Drain.....	5-19
5-12	Specific Gravity Chart.....	5-20
5-13	Cylinder Block Drain Plug.....	5-22
5-14	Checking Drive Belt Tension.....	5-26
5-15	Checking and Adjusting Engine Valve Clearances.....	5-28
5-16	Radiator Hoses and Connections.....	5-31

List of Figures – Cont.

<u>FIGURE</u>	<u>TITLE</u>	<u>PAGE</u>
6-1	Axle Grease Fittings.....	6-3
6-2	Drive Shaft Grease Fittings.....	6-5
6-3	Transmission Plugs and Filters.....	6-7
6-4	Axle Differential and Trumpet Fluid Levels.....	6-10
6-5	Axle Wheel End.....	6-12
7-1	Lug Nut Torque Check Sequence.....	7-2
7-2	Wheel/Tire Assembly.....	7-4
7-3	Wheel Lug Nut Tightening Sequence.....	7-6
8-1	Making Leak-Free Connections.....	8-3
8-2	Hydraulic Filtration System.....	8-5
8-3	Hydraulic Reservoir Sight Gauge.....	8-7
8-4	Hydraulic Reservoir Fill Cap.....	8-8
8-5	Hydraulic Reservoir.....	8-10
8-6	Hydraulic Reservoir Strainer.....	8-12
8-7	Air Breather.....	8-15
8-8	Location of Hydraulic Filters.....	8-17
8-9	High-Pressure Filter.....	8-18
8-10	Return Line Filter.....	8-20
8-11	Taking Hydraulic Fluid Sample.....	8-23
8-12	Hose Installation Guidelines.....	8-26
8-13	Cartridge Valve Solenoid.....	8-31
8-14	Location of Hydraulic Components.....	8-32
8-15	Distribution Manifold Hose Connections – Model XR842.....	8-37
8-16	Distribution Manifold Hose Connections – Model XR1045.....	8-39
8-17	Distribution Manifold Hose Connections – Model XR1245.....	8-41
8-18	Distribution Manifold Hose Connections – Model XR1255.....	8-43
9-1	Battery and Cables.....	9-4
9-2	Battery Installation.....	9-6
9-3	Auxiliary Battery Installation.....	9-10
9-4	Connecting Auxiliary Battery.....	9-11
9-5	Electrical Center Relays and Fuses.....	9-12
9-6	Engine Relay Assembly.....	9-17
9-7	Correct Installation of Relays B through G, P/N 12068567.....	9-18

List of Figures – Cont.

<u>FIGURE</u>	<u>TITLE</u>	<u>PAGE</u>
9-8	Battery Disconnect Switch	9-20
9-9	Determining Fuse Condition	9-21
10-1	Boom and Attachment Lubrication	10-3
10-2	Boom Extend Chain Lubrication	10-7
10-3	Chain Nomenclature	10-8
10-4	Chain Damage Inspection	10-10
10-5	Chain Edge Wear Measurement	10-12
10-6	Chain Elongation Measurement	10-14
10-7	Boom Chain Tension Adjustment	10-16
10-8	Boom Slide Blocks	10-18
10-9	Boom Roller Inspection	10-22
10-10	Location of Boom Rollers	10-23
10-11	Fork Nomenclature	10-24
10-12	Measuring Fork Flank Wear	10-27
10-13	Boom Lift and Extend Cylinder Manual Lowering Valves	10-31
11-1	Boom Angle Indicator	11-2
11-2	Frame Level Indicator	11-3
12-1	Tie-Down Point Locations	12-6

List of Tables

<u>TABLE</u>	<u>TITLE</u>	<u>PAGE</u>
1-1	Related Technical Documentation	1-2
1-2	Lubricants and Fluids	1-13
1-3	Filter and Strainer Part Numbers	1-14
1-4	Model XR620/621 Specifications	1-15
1-5	Model XR842 Specifications	1-16
1-6	Model XR1045 Specifications	1-17
1-7	Model XR1245 Specifications	1-18
1-8	Model XR1255 Specifications	1-19
1-9	Model XR1267 Specifications	1-20
1-10	Model XR1270 Specifications	1-21
1-11	Model XR1534 Specifications	1-22
1-12	Model XR1642 Specifications	1-23
1-13	Model XR2034 Specifications	1-24
1-14	Model XR2045 Specifications	1-25
1-15	Model XR2450 Specifications	1-26
1-16	Model XR3034 Specifications	1-27
1-17	Engine Specifications	1-28
1-18	Tightening Torque Values – Cap Screws	1-30
2-1	Safety Symbols	2-2
3-1	Preventive Maintenance – After First 50 Hours of Operation	3-1
3-2	Preventive Maintenance – After First 250 Hours of Operation	3-2
3-3	Preventive Maintenance – After Every 8 Hours of Operation	3-3
3-4	Preventive Maintenance – After Every 50 Hours of Operation	3-3
3-5	Preventive Maintenance – After Every 250 Hours of Operation	3-4
3-6	Preventive Maintenance – After Every 500 Hours of Operation	3-4
3-7	Preventive Maintenance – After Every 1,000 Hours of Operation	3-5
3-8	Preventive Maintenance – After Every 2,000 Hours of Operation	3-6
3-9	Long-Interval Maintenance Requirements	3-6
5-1	Cylinder and Valve Numbers	5-28
7-1	Forklift Operating Weights	7-5
7-2	Wheel and Tire Specifications	7-7
8-1	Hose Connector Torque Values	8-27
8-2	Boom Isolation Manifold Valve Torque Values	8-45

List of Tables – Cont.

<u>TABLE</u>	<u>TITLE</u>	<u>PAGE</u>
8-3	Rear Axle Cylinder Valve Torque Values	8-45
8-4	Distribution Manifold Torque Values (XR842/1045)	8-45
8-5	Distribution Manifold Torque Values (XR1245/1255)	8-46
9-1	Electrical Center Relays.....	9-15
9-2	Electrical Center Fuses and Circuit Breaker	9-15
9-3	Fuse Block Fuses.....	9-16
9-4	Engine Relay Assembly Relays and Fuse.....	9-16
10-1	Fork Nomenclature.....	10-24
12-1	Forklift Operating Weights	12-5

Section 1

General Information & Specifications

1-1 SCOPE OF MANUAL

This manual provides operation and maintenance information and procedures intended for use by the owner and/or operator of the forklift. For detailed, specific operating instructions, refer to the applicable Operation and Safety Manual for the specific model forklift. For detailed maintenance and troubleshooting information and schematic diagrams, refer to the Service Manual.

1-2 APPLICABILITY

This Owner's Service Manual applies to the following model rough-terrain, forward-reach forklifts manufactured by Xtreme Manufacturing:

XR620	XR1270
XR621	XR1534
XR842	XR1642
XR1045	XR2034
XR1245	XR2045
XR1255	XR2450
XR1267	XR3034

1-3 SERVICE BULLETINS

Service Bulletins are issued by Xtreme Manufacturing, LLC to help mechanics diagnose and repair forklift problems discovered during the manufacturing process or reported by owners and repair shops. There are two types of Service Bulletins:

- *Safety Service Bulletin*: This type of bulletin is issued for safety problems that affect the safe operation of the forklift. An example would be "*Parking brake is weak.*"
- *Service Bulletin*: This type of bulletin is issued for non-safety problems that affect the reliability or performance of the forklift or forklift subsystem. An example would be "*Engine idles rough.*"

Perform the following steps when you have received a service bulletin:

- Carefully read and analyze the service bulletin.
- Determine if the service bulletin applies to your forklift(s).

General Information & Specifications

- Determine if you have the skills, tools, equipment, and personnel required to comply with the Service Bulletin. If not, contact a reputable service center for assistance.
- Comply with the inspection or maintenance procedure contained in the Service Bulletin.
- For Safety Service Bulletins, complete the enclosed response form and return to:

*Xtreme Manufacturing Co.
1415 West Bonanza Road
Las Vegas, NV 89106*

1-4 RELATED TECHNICAL DOCUMENTATION

Refer to Table 1-1 for a listing of technical documentation related to the safety, operation, repair, and overhaul of the forklifts.

Table 1-1. Related Technical Documentation

Item	Manufacturer/Agency	Part No.
Users Manual – 1100 Series Engines Models RE, RF, RG, RH, RJ, RK	Perkins Engines, Inc.	TPD 1477
Repair Manual – Transmission Model TLB2 4WD	Cararro SPA	CA357151
Spare Parts List – Transmission Model TLB2 (Ref. 141166)	Cararro SPA	CA355311
Repair Manual – Axle Model 26.28M	Cararro SPA	CA355038
Spare Parts List – Axle Model 26.28M (Ref. 136534)	Cararro SPA	CA355038
Spare Parts List – Axle Model 26.28M (Ref. 142200)	Cararro SPA	CA355443
Service Manual – K3VL Swash-Plate Type Axial Piston Pump	Kawasaki Precision Machinery of America	03890327-E
Maintenance and Repair Instruction Manual Drive Axle Type 212	DANA ITALIA SpA	MO212S10
Safety Standard for Rough Terrain Forklift Trucks	American Society of Mechanical Engineers	ASME B56.6-2002

1-5 FORKLIFT NOMENCLATURE

Refer to Figure 1-1 for a depiction of forklift components and nomenclature. All forklifts are basically the same except that models XR1245, XR1255, XR1267, XR1270, XR2045, and XR2450 are equipped with left and right outriggers.

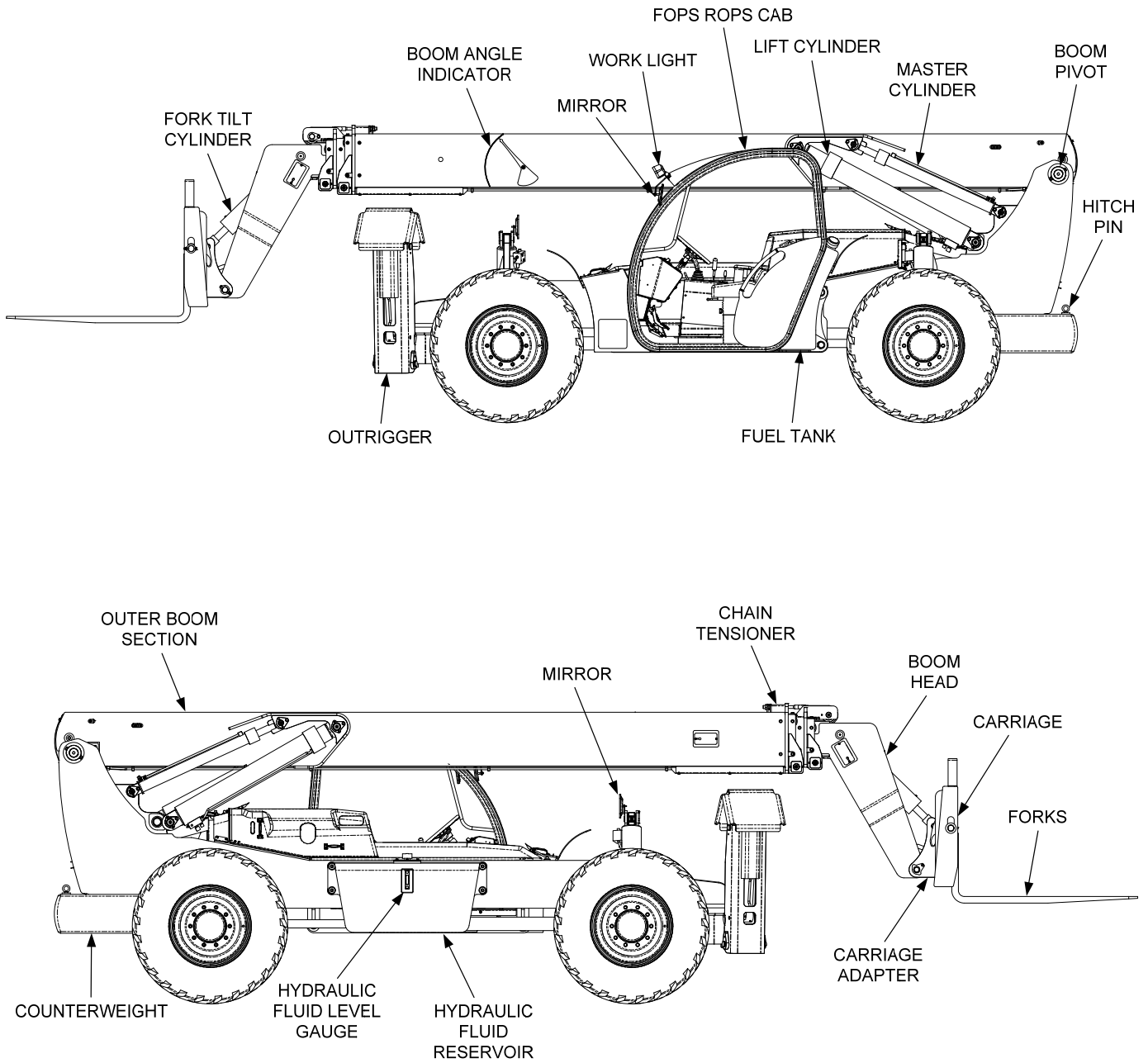


Figure 1-1. Forklift Nomenclature (Sheet 1 of 3)

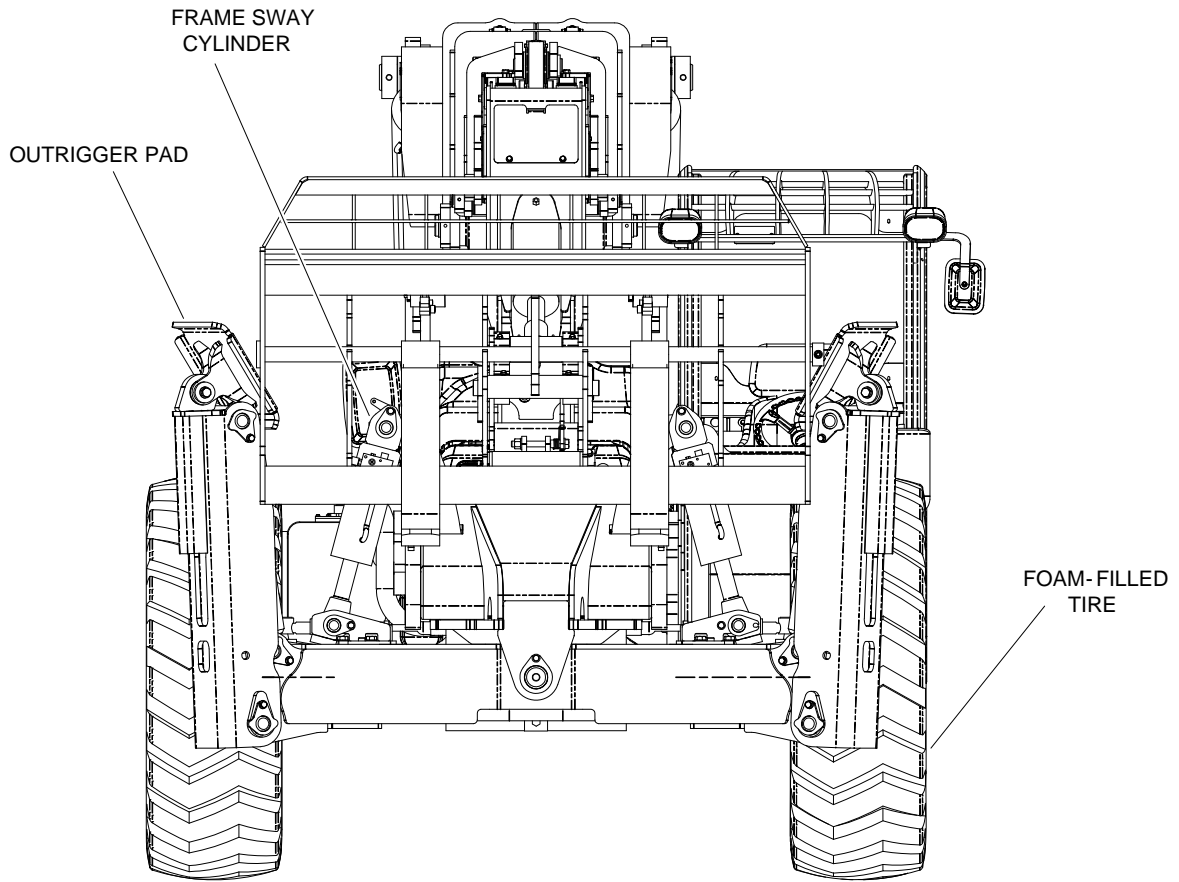


Figure 1-1. Forklift Nomenclature (Sheet 2 of 3)

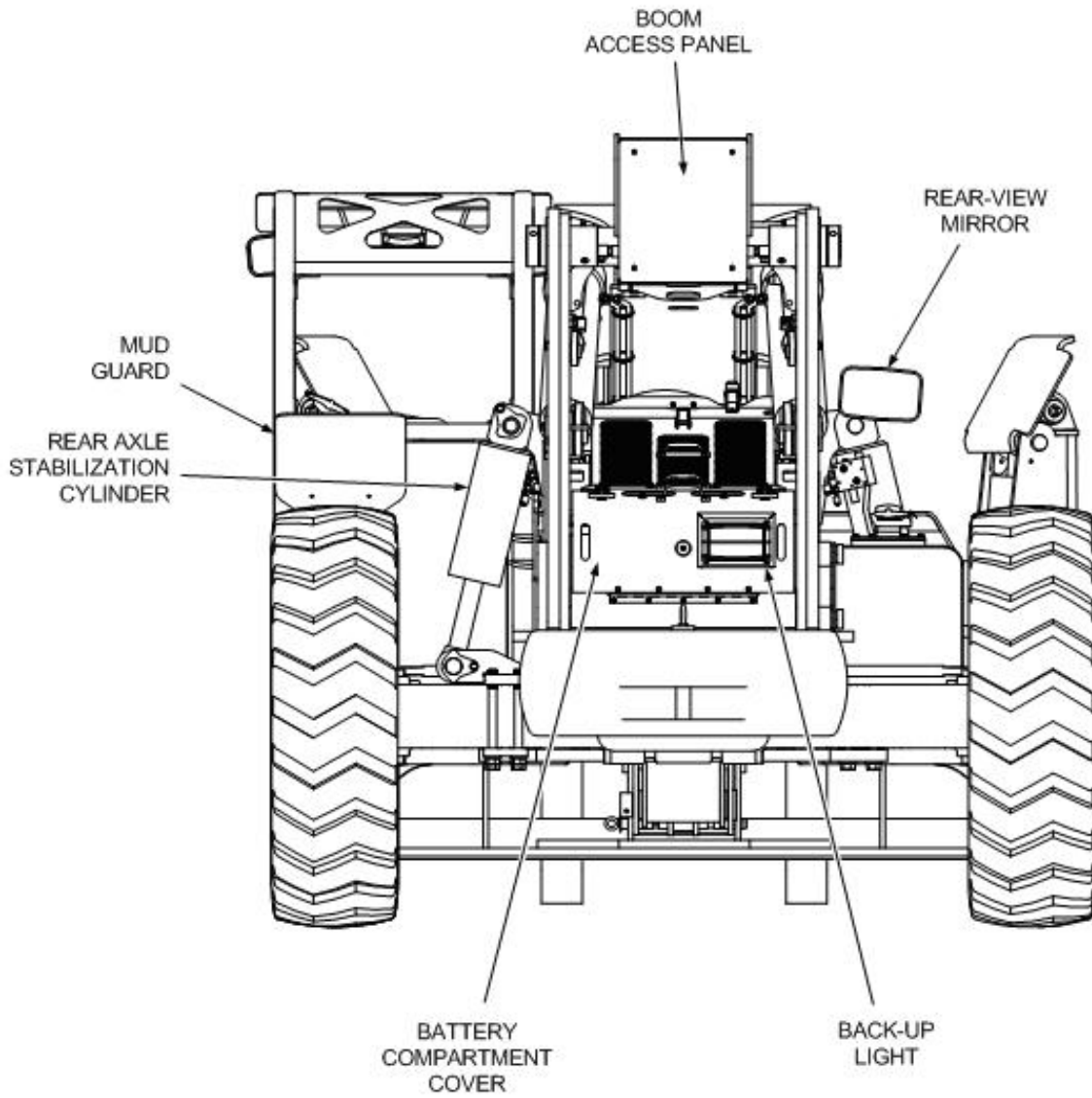
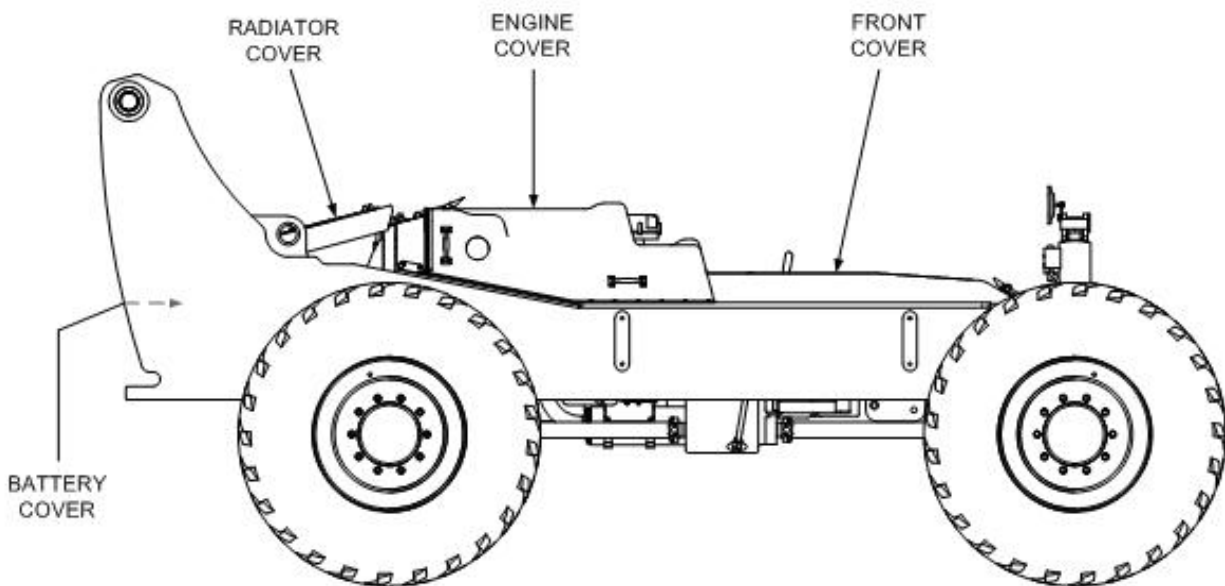


Figure 1-1. Forklift Nomenclature (Sheet 3 of 3)



NOTE:
BOOM AND CAB NOT SHOWN FOR CLARITY

Figure 1-2. Forklift Covers