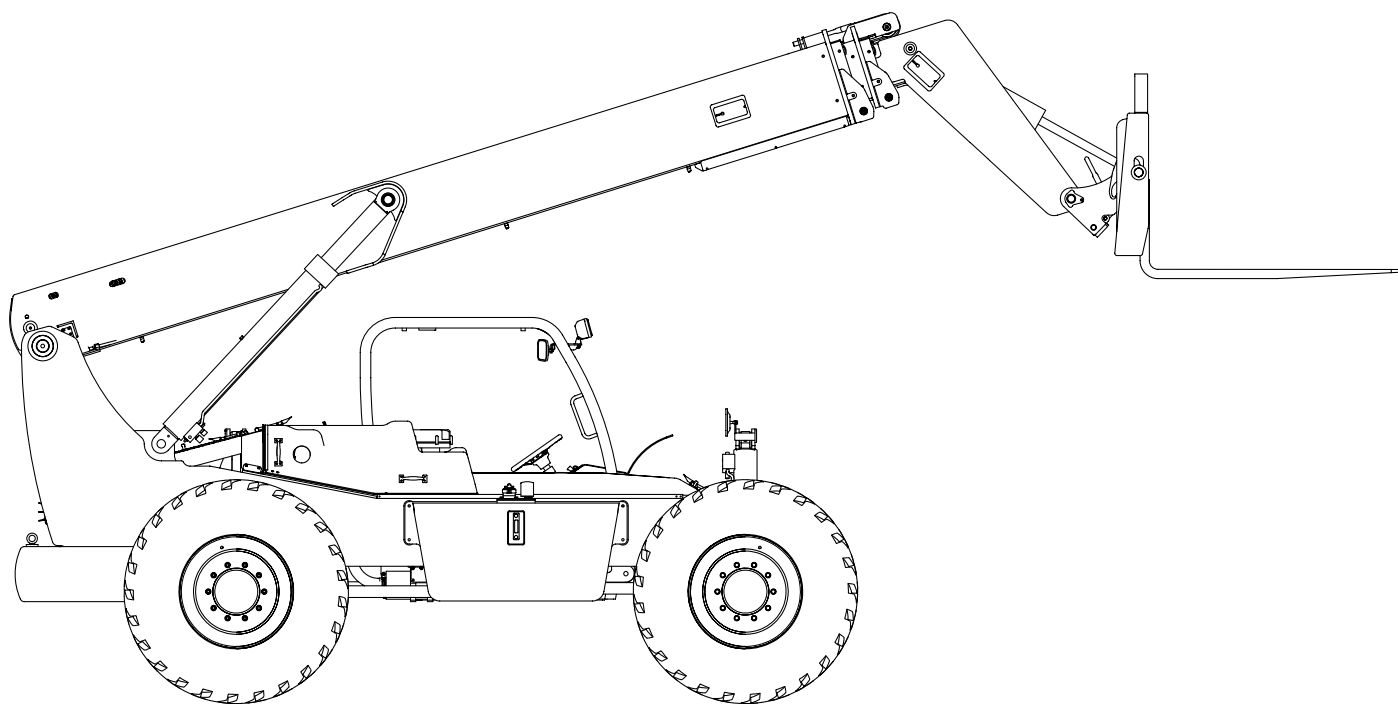




## Illustrated Parts Breakdown Manual

### Forward Reach Forklift

### Model XR737/742



**Xtreme Manufacturing**  
1415 West Bonanza Road  
Las Vegas, NV 89106  
(702) 858-2404  
[www.xtrememanufacturing.com](http://www.xtrememanufacturing.com)

Copyright © 2005 By Xtreme Manufacturing

## List of Effective Pages

This manual consists of 450 pages as listed below:

- Outside title page
- Inside title page
- Pages A through D
- Pages i through x
- Pages 1-1 through 1-2
- Pages 2-1 through 2-42
- Pages 3-1 through 3-18
- Pages 4-1 through 4-10
- Pages 5-1 through 5-8
- Pages 6-1 through 6-12
- Pages 7-1 through 7-58
- Pages 8-1 through 8-20
- Pages 9-1 through 9-72
- Pages 10-1 through 10-60
- Pages 11-1 through 11-12
- Index 1 through Index 120
- Warranty 1 through Warranty 2
- Inside back cover
- Outside back cover





THIS PAGE INTENTIONALLY LEFT BLANK

## Table of Contents

<u>Chap./Par.</u>	<u>Title</u>	<u>Page</u>
	List of Effective Pages .....	A
	Service Bulletins .....	B
	Design Change Notices .....	C
	Alphabetical List of Parts Breakdowns .....	ii
	Numerical List of Parts Breakdowns .....	v
	Section 1 – General Information .....	1-1
	Section 2 – Chassis .....	2-1
	Section 3 – Decals and Load Charts .....	3-1
	Section 4 – Engine .....	4-1
	Section 5 – Transmission, Axles, and Driveshafts .....	5-1
	Section 6 – Steering, Brakes, Wheels, and Tires .....	6-1
	Section 7 – Hydraulic System .....	7-1
	Section 8 – Electrical System .....	8-1
	Section 9 – Boom .....	9-1
	Section 10 – Cab and Consoles .....	10-1
	Section 11 – Boom Attachments .....	11-1
	Numerical and Alphabetical Indexes .....	Index 1

## Alphabetical List of Parts Breakdowns

<u>Title</u>	<u>Figure No.</u>	<u>Page No.</u>
737 Basic Assembly.....	2-1.....	2-2
737 Boom Assembly .....	9-1.....	9-2
737 Cab Assembly.....	10-1.....	10-2
737 Chassis Assembly – Axles.....	2-5.....	2-20
737 Chassis Assembly – Covers & Console.....	2-7.....	2-32
737 Chassis Assembly – Engine .....	2-3.....	2-6
737 Electrical Assembly .....	8-1.....	8-2
737 Extend Cylinder Assembly .....	7-16.....	7-35
737 Extend Cylinder Housing Assembly.....	7-18.....	7-39
737 Front Control Console Assembly .....	10-3.....	10-15
737 Front Control Panel Assembly .....	10-5.....	10-21
737 Inner Boom Assembly.....	9-7.....	9-32
737 Inner Boom Subassembly .....	9-9.....	9-38
737 Inner Boom Subassembly.....	9-11.....	9-44
737 Isolation Manifold Assembly .....	7-7.....	7-15
737 Mid Boom Assembly .....	9-5.....	9-20
737 Operator Control Valve Assembly.....	7-10.....	7-23
737 Outer Boom Assembly .....	9-3.....	9-12
737 Side Control Console Assembly .....	10-8.....	10-29
742 Basic Assembly.....	2-2.....	2-4
742 Boom Assembly .....	9-2.....	9-7
742 Cab Assembly.....	10-2.....	10-8
742 Chassis Assembly – Axles.....	2-6.....	2-26
742 Chassis Assembly – Covers & Console.....	2-8.....	2-37
742 Chassis Assembly – Engine .....	2-4.....	2-13
742 Electrical Assembly .....	8-2.....	8-6
742 Extend Cylinder Assembly .....	7-17.....	7-37
742 Extend Cylinder Housing Assembly.....	7-18.....	7-39
742 Front Control Console Assembly .....	10-4.....	10-18
742 Front Control Panel Assembly .....	10-6.....	10-23
742 Inner Boom Assembly.....	9-8.....	9-35
742 Inner Boom Subassembly .....	9-10.....	9-41
742 Inner Boom Subassembly.....	9-12.....	9-46
742 Isolation Manifold Assembly .....	7-8.....	7-18

## Alphabetical List of Parts Breakdowns – Cont.

<u>Title</u>	<u>Figure No.</u>	<u>Page No.</u>
742 Mid Boom Assembly .....	9-6.....	9-26
742 Operator Control Valve Assembly.....	7-11.....	7-25
742 Outer Boom Assembly .....	9-4.....	9-16
742 Side Control Console Assembly .....	10-9.....	10-33
Accelerator Pedal Assembly .....	10-13.....	10-43
Accumulator Assembly.....	6-3.....	6-6
Accumulator Charge Valve Assembly.....	6-4.....	6-8
Adapter Assembly .....	9-13.....	9-48
Adapter Assembly .....	9-14.....	9-50
Air Cleaner Assembly.....	4-3.....	4-9
Axle Cylinder Subassembly .....	7-25.....	7-53
Battery Cover Assembly.....	10-17.....	10-53
Belleville Spring Stack.....	9-22.....	9-66
Boom Lift Cylinder Assembly .....	7-15.....	7-33
Boom Manifold Assembly.....	7-9.....	7-21
Brake Low-Pressure Switch.....	6-5.....	6-10
Brake Valve Assembly .....	6-2.....	6-4
Carriage Pin Assembly.....	11-4.....	11-8
Carriage Pin Assembly.....	11-5.....	11-10
Carriage Post Assembly.....	11-3.....	11-6
Carriage Tilt Cylinder Assembly.....	7-22.....	7-47
Chain Sheave Assembly .....	9-20.....	9-62
Chain Sheave Assembly .....	9-21.....	9-64
Chassis Hose Kit.....	7-26.....	7-55
Console Roller Assembly .....	10-20.....	10-59
Control Enclosure Subassembly .....	10-7.....	10-26
Decals and Load Charts .....	3-1.....	3-2
Distribution Manifold Assembly .....	7-6.....	7-12
Electrical Center Assembly .....	8-3.....	8-10
Engine Cover Assembly.....	10-15.....	10-47
Engine Relay Assembly .....	8-7.....	8-18
Engine Transmission Assembly .....	4-1.....	4-2
Extend Cylinder Pin Assembly.....	7-21.....	7-45
Extend Cylinder Support Assembly .....	7-20.....	7-43



## Alphabetical List of Parts Breakdowns – Cont.

<u>Title</u>	<u>Figure No.</u>	<u>Page No.</u>
Filler Plate Assembly.....	10-19.....	10-57
Front Axle Assembly .....	5-2.....	5-4
Front Axle Cylinder Assembly.....	7-24.....	7-51
Front Cover Assembly.....	10-14.....	10-45
Front Handle Assembly.....	7-12.....	7-27
Handle Boot Assembly.....	10-12.....	10-41
High-Pressure Filter / Steering Valve Assembly ...	7-4.....	7-8
High-Pressure Filter / Steering Valve Assembly ...	7-5.....	7-10
Hose Clamp Assembly.....	9-24.....	9-70
Hydraulic Tank Assembly.....	7-1.....	7-2
Hydraulic Tank Assembly.....	7-2.....	7-4
Mid Boom Roller Assembly.....	9-17.....	9-56
Outer Boom Roller Assembly.....	9-16.....	9-54
Radiator Assembly.....	4-2.....	4-7
Radiator Cover Assembly.....	10-16.....	10-51
Radiator Shroud Assembly.....	10-18.....	10-55
Rear Axle Assembly.....	5-3.....	5-6
Rear Handle Assembly.....	7-14.....	7-31
Roller Assembly.....	9-18.....	9-58
Roller Assembly.....	9-19.....	9-60
Rotate Carriage Assembly.....	11-2.....	11-4
Side Console Cover Assembly.....	10-10.....	10-37
Side Console Subassembly.....	10-11.....	10-39
Slide Block Assembly.....	9-15.....	9-52
Standard Carriage Assembly.....	11-1.....	11-2
Steering Column Assembly.....	6-1.....	6-2
Sway Handle Assembly.....	7-13.....	7-29
Terminal Strip Assembly.....	8-4.....	8-12
Terminal Strip Assembly.....	8-5.....	8-14
Terminal Strip Assembly.....	8-6.....	8-16
Tilt Cylinder Subassembly.....	7-23.....	7-49
Transmission and Pump Assembly.....	5-1.....	5-2
Transmission and Pump Assembly.....	7-3.....	7-6
Tube Clamp Assembly No. 2.....	9-23.....	9-68

## Numerical List of Parts Breakdowns

<u>Figure No.</u>	<u>Title</u>	<u>Page No.</u>
2-1	737 Basic Assembly	2-2
2-2	742 Basic Assembly	2-4
2-3	737 Chassis Assembly – Engine	2-6
2-4	742 Chassis Assembly – Engine	2-13
2-5	737 Chassis Assembly – Axles	2-20
2-6	742 Chassis Assembly – Axles	2-26
2-7	737 Chassis Assembly – Covers & Console	2-32
2-8	742 Chassis Assembly – Covers & Console	2-37
3-1	Decals and Load Charts	3-2
4-1	Engine Transmission Assembly	4-2
4-2	Radiator Assembly	4-7
4-3	Air Cleaner Assembly	4-9
5-1	Transmission and Pump Assembly	5-2
5-2	Front Axle Assembly	5-4
5-3	Rear Axle Assembly	5-6
6-1	Steering Column Assembly	6-2
6-2	Brake Valve Assembly	6-4
6-3	Accumulator Assembly	6-6
6-4	Accumulator Charge Valve Assembly	6-8
6-5	Brake Low-Pressure Switch	6-10
7-1	Hydraulic Tank Assembly	7-2
7-2	Hydraulic Tank Assembly	7-4
7-3	Transmission and Pump Assembly	7-6
7-4	High-Pressure Filter / Steering Valve Assembly	7-8
7-5	High-Pressure Filter / Steering Valve Assembly	7-10
7-6	Distribution Manifold Assembly	7-12
7-7	737 Isolation Manifold Assembly	7-15
7-8	742 Isolation Manifold Assembly	7-18
7-9	Boom Manifold Assembly	7-21
7-10	737 Operator Control Valve Assembly	7-23
7-11	742 Operator Control Valve Assembly	7-25
7-12	Front Handle Assembly	7-27

## Numerical List of Parts Breakdowns – Cont.

<u>Figure No.</u>	<u>Title</u>	<u>Page No.</u>
7-13	Sway Handle Assembly	7-29
7-14	Rear Handle Assembly	7-31
7-15	Boom Lift Cylinder Assembly	7-33
7-16	737 Extend Cylinder Assembly	7-35
7-17	742 Extend Cylinder Assembly	7-37
7-18	737 Extend Cylinder Housing Assembly	7-39
7-19	742 Extend Cylinder Housing Assembly	7-41
7-20	Extend Cylinder Support Assembly	7-43
7-21	Extend Cylinder Pin Assembly	7-45
7-22	Carriage Tilt Cylinder Assembly	7-47
7-23	Tilt Cylinder Subassembly	7-49
7-24	Front Axle Cylinder Assembly	7-51
7-25	Axle Cylinder Subassembly	7-53
7-26	Chassis Hose Kit	7-55
8-1	737 Electrical Assembly	8-2
8-2	742 Electrical Assembly	8-6
8-3	Electrical Center Assembly	8-10
8-4	Terminal Strip Assembly	8-12
8-5	Terminal Strip Assembly	8-14
8-6	Terminal Strip Assembly	8-16
8-7	Engine Relay Assembly	8-18
9-1	737 Boom Assembly	9-2
9-2	742 Boom Assembly	9-7
9-3	737 Outer Boom Assembly	9-12
9-4	742 Outer Boom Assembly	9-16
9-5	737 Mid Boom Assembly	9-20
9-6	742 Mid Boom Assembly	9-26
9-7	737 Inner Boom Assembly	9-32
9-8	742 Inner Boom Assembly	9-35
9-9	737 Inner Boom Subassembly	9-38
9-10	742 Inner Boom Subassembly	9-41
9-11	737 Inner Boom Subassembly	9-44
9-12	742 Inner Boom Subassembly	9-46
9-13	Adapter Assembly	9-48
9-14	Adapter Assembly	9-50

## Numerical List of Parts Breakdowns – Cont.

<u>Figure No.</u>	<u>Title</u>	<u>Page No.</u>
9-15	Slide Block Assembly .....	9-52
9-16	Outer Boom Roller Assembly .....	9-54
9-17	Mid Boom Roller Assembly .....	9-56
9-18	Roller Assembly.....	9-58
9-19	Roller Assembly.....	9-60
9-20	Chain Sheave Assembly .....	9-62
9-21	Chain Sheave Assembly .....	9-64
9-22	Belleville Spring Stack.....	9-66
9-23	Tube Clamp Assembly No. 2.....	9-68
9-24	Hose Clamp Assembly .....	9-70
10-1	737 Cab Assembly .....	10-2
10-2	742 Cab Assembly .....	10-8
10-3	737 Front Control Console Assembly.....	10-15
10-4	742 Front Control Console Assembly.....	10-18
10-5	737 Front Control Panel Assembly.....	10-21
10-6	742 Front Control Panel Assembly.....	10-23
10-7	Control Enclosure Subassembly .....	10-26
10-8	737 Side Control Console Assembly.....	10-29
10-9	742 Side Control Console Assembly.....	10-33
10-10	Side Console Cover Assembly.....	10-37
10-11	Side Console Subassembly.....	10-39
10-12	Handle Boot Assembly .....	10-41
10-13	Accelerator Pedal Assembly.....	10-43
10-14	Front Cover Assembly .....	10-45
10-15	Engine Cover Assembly .....	10-47
10-16	Radiator Cover Assembly.....	10-51
10-17	Battery Cover Assembly .....	10-53
10-18	Radiator Shroud Assembly.....	10-55
10-19	Filler Plate Assembly.....	10-57
10-20	Console Roller Assembly .....	10-59
11-1	Standard Carriage Assembly.....	11-2
11-2	Rotate Carriage Assembly.....	11-4
11-3	Carriage Post Assembly .....	11-6
11-4	Carriage Pin Assembly .....	11-8
11-5	Carriage Pin Assembly .....	11-10

# Section 1

## General Information

**Table 1-1. Abbreviations & Acronyms**

<u>Term</u>	<u>Meaning</u>
A	Amperes
ASTM	American Society for Testing and Materials
AWG	American Wire Gauge
BHC	Button head cap
BKDN	Breakdown
DIA	Diameter
DPDT	Double-pole, double-throw
FSHC	Flat socket head cap
FTG	Fittings
HHC	Hex head cap
ID	Inside diameter
LG	Long
MM	Millimeter
NHA	Next higher assembly
NPT	National pipe thread
OD	Outside diameter
OHM	Oval head machine
PHM	Pan head machine
PWH	Pan washer head
QD	Quick-Disconnect
REF	Reference
REG	Regular
SAE	Society of Automotive Engineers
SBHC	Socket button head cap
SHC	Socket head cap
SHS	Socket head shoulder

<b><u>Term</u></b>	<b><u>Meaning</u></b>
SPDT	Single-throw, double-pole
SPST	Single-pole, single-throw
STR	Straight
THD	Thread
UNC	Unified National Coarse
UNF	Unified National Fine
V	Volts

## **Section 2**

### **Chassis**

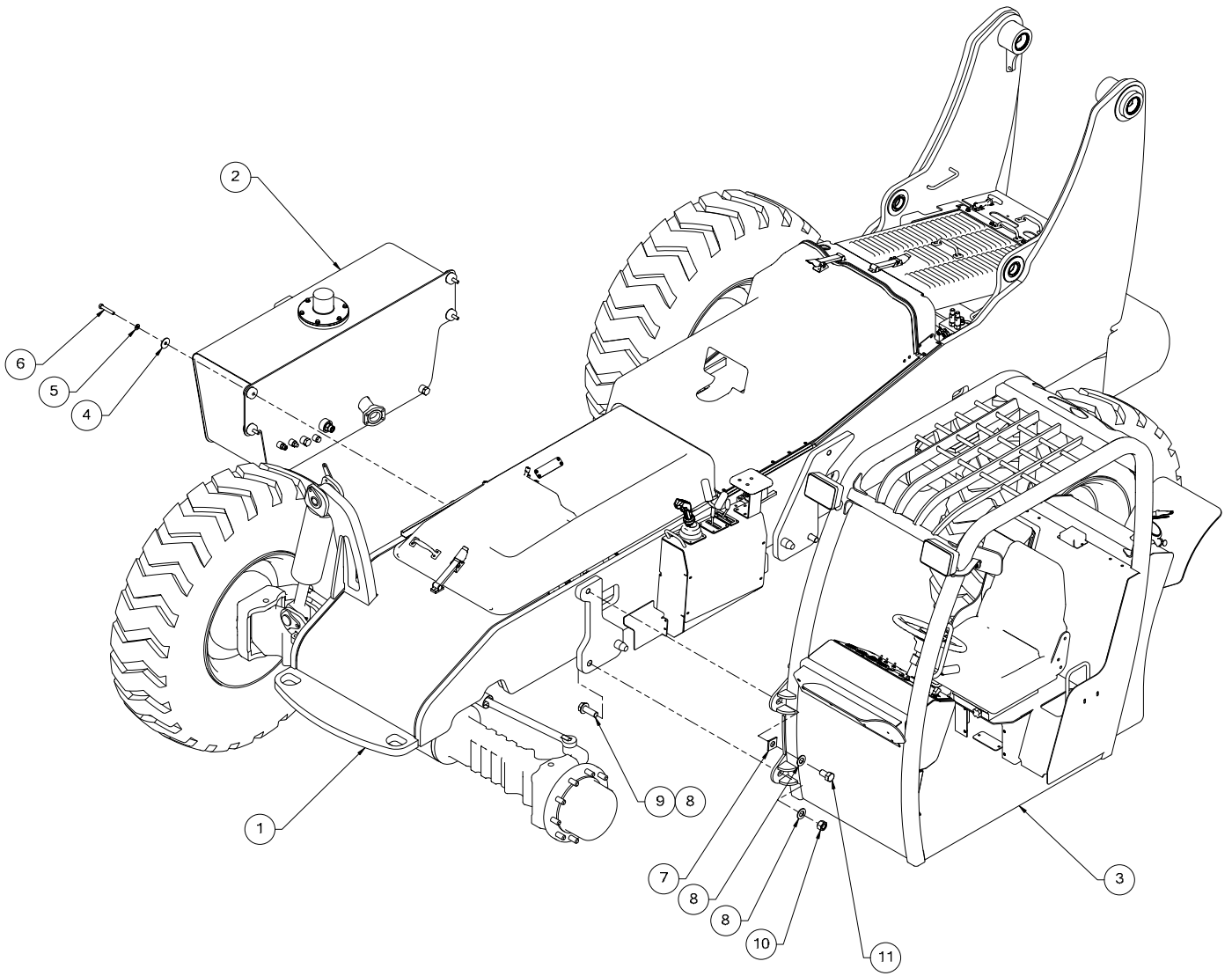


Figure 2-1. 737 Basic Assembly



Table 2-1. 737 Basic Assembly

Figure & Item No.	Part No.	Description	Quantity	Use On
–	26506-000	737 Basic assembly	–	–
2-1-1	26507-000	737 Chassis assembly - covers/console	1	–
2-1-2	26641-001	Hydraulic tank assembly	1	–
2-1-3	26560-000	Cab assembly	1	–
2-1-4	25383-000	Pin retainer plate	4	–
2-1-5	11001-008	Washer 1/2" SAE flat	4	–
2-1-6	10004-024	Screw 1/2-13UNC HHC x 3"	4	–
2-1-7	11011-016	Washer 1" ID square	2	–
2-1-8	11001-016	Washer 1" dia SAE flat	6	–
2-1-9	10029-024	Screw 1-14UNF HHC x 3"	2	–
2-1-10	10901-016	Nut 1-14UNF reg hex	2	–
2-1-11	10029-014	Screw 1-14UNF HHC x 1-3/4"	2	–

Refer to Section 1 for the definition of acronyms and abbreviations used in the Description Column.

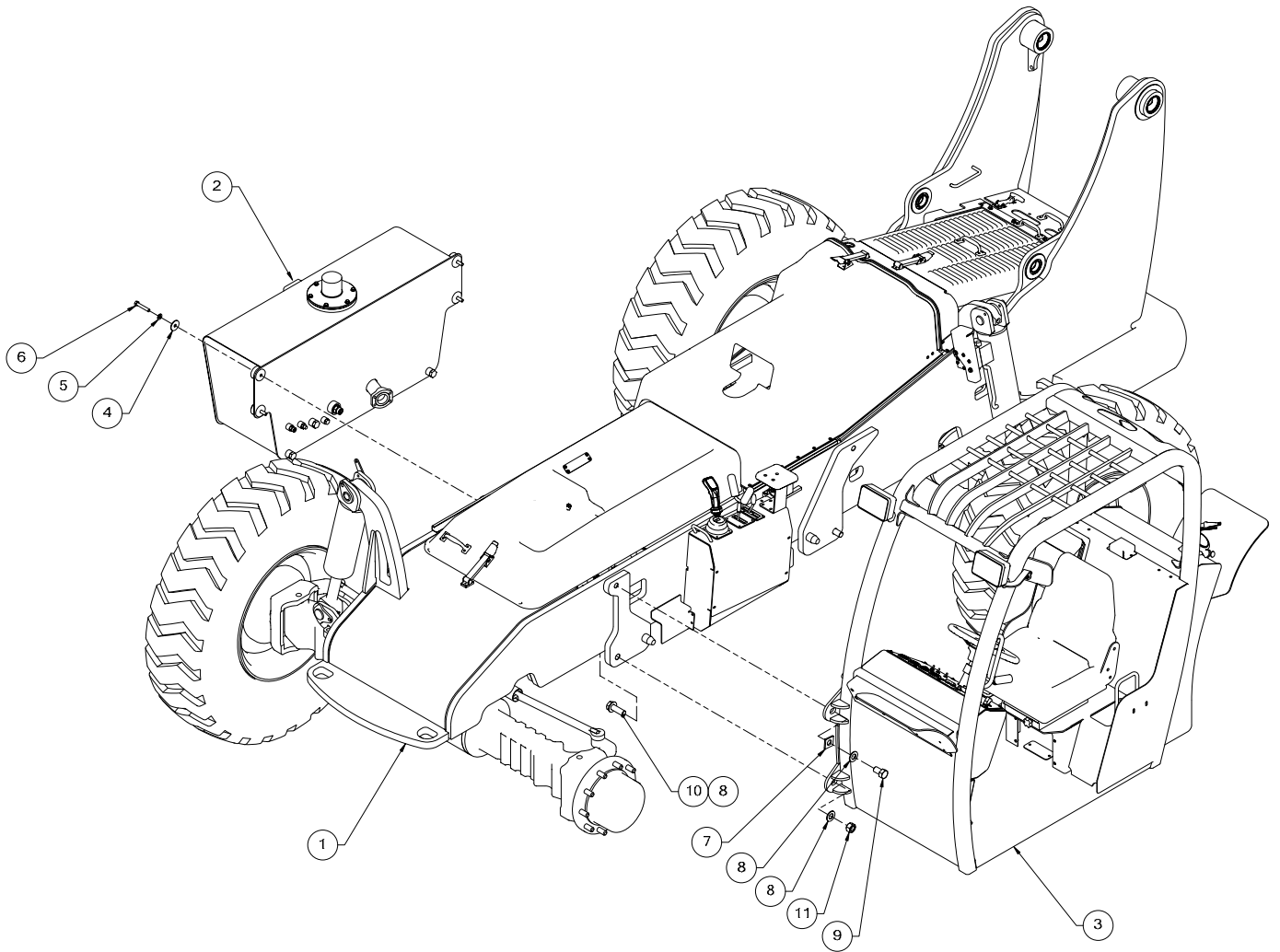
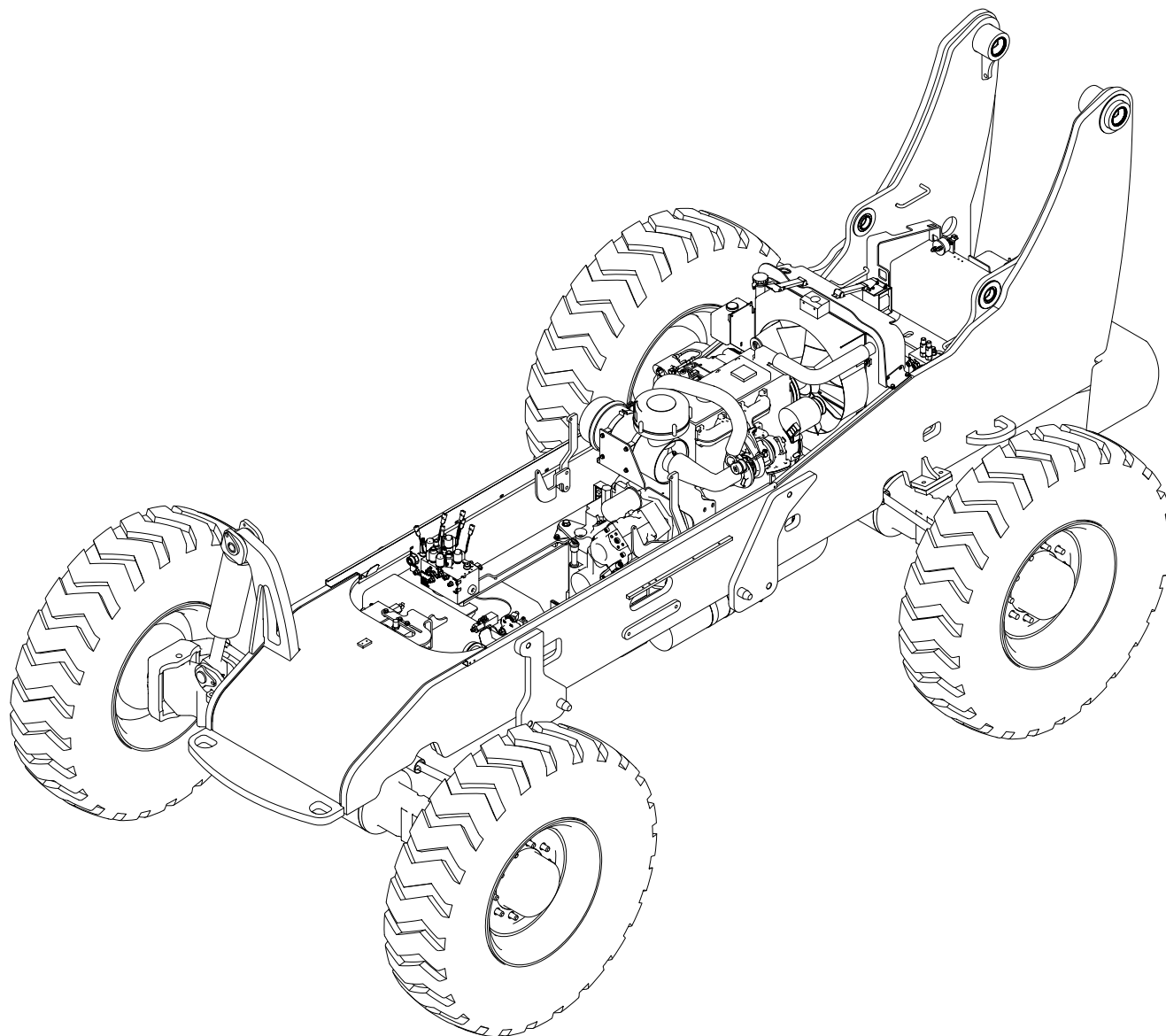


Figure 2-2. 742 Basic Assembly

Table 2-2. 742 Basic Assembly

Figure & Item No.	Part No.	Description	Quantity	Use On
–	26713-000	742 Basic Assembly	–	–
2-2-1	26712-000	742 Chassis assembly - covers/console	1	–
2-2-2	26641-001	Hydraulic tank assembly	1	–
2-2-3	26707-000	Cab assembly	1	–
2-2-4	25383-000	Pin retainer plate	4	–
2-2-5	11001-008	Washer 1/2 SAE flat	4	–
2-2-6	10004-024	Screw 1/2-13UNC HHC x 3"	4	–
2-2-7	11011-016	Washer 1" ID square	2	–
2-2-8	11002-020	Washer grade 8 (extra thick)	6	–
2-2-9	10029-014	Screw 1-14UNF HHC x 1-3/4"	2	–
2-2-10	10029-024	Screw 1-14UNF HHC x 3"	2	–
2-2-11	10901-016	Nut 1-14UNF reg hex	2	–

Refer to Section 1 for the definition of acronyms and abbreviations used in the Description Column.



**Figure 2-3. 737 Chassis Assembly – Engine (Sheet 1 of 5)**