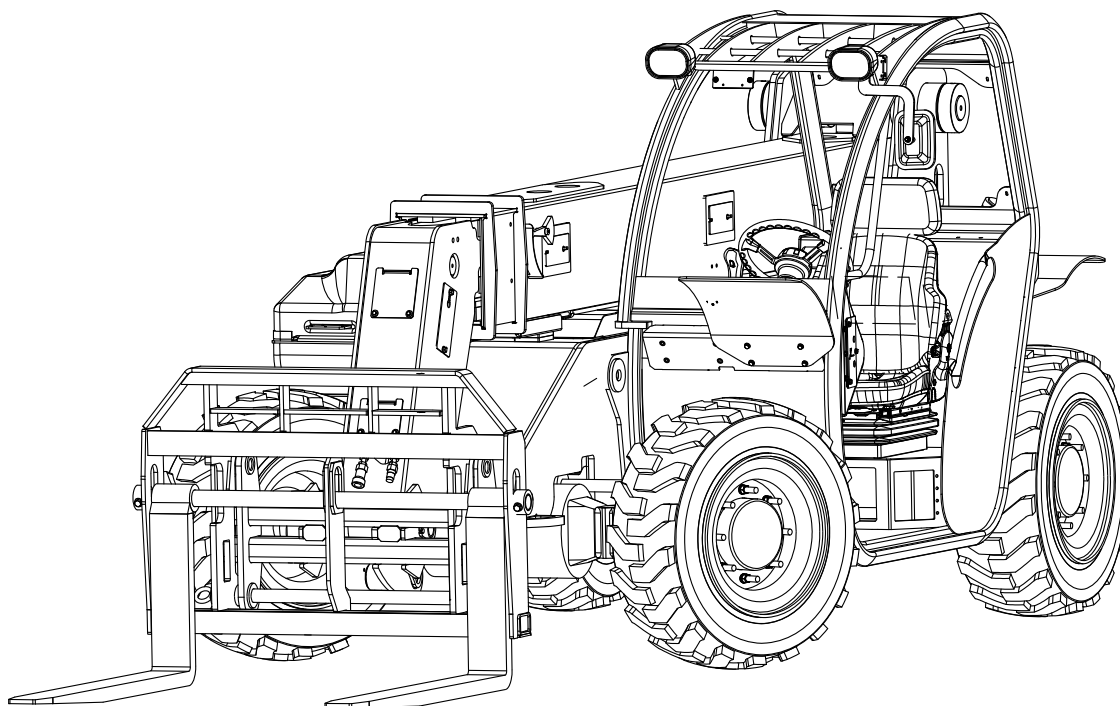




## **Illustrated Parts Breakdown Manual**

### **Forward Reach Forklift**

### **Model XR620-621**



**Xtreme Manufacturing  
1415 West Bonanza Road  
Las Vegas, NV 89106  
(702) 636-2969  
[www.xtrememanufacturing.com](http://www.xtrememanufacturing.com)**

Copyright © 2010 By Xtreme Manufacturing

## List of Effective Pages

This manual consists of 306 pages as listed below:

- Outside title page
- Inside title page
- Pages A through D
- Pages i through x
- Pages 1-1 through 1-2
- Pages 2-1 through 2-40
- Pages 3-1 through 3-18
- Pages 4-1 through 4-14
- Pages 5-1 through 5-12
- Pages 6-1 through 6-14
- Pages 7-1 through 7-42
- Pages 8-1 through 8-20
- Pages 9-1 through 9-22
- Pages 10-1 through 10-18
- Pages 11-1 through 11-10
- Index 1 through Index 1-77
- Warranty 1 through Warranty 2
- Inside back cover
- Outside back cover





THIS PAGE INTENTIONALLY LEFT BLANK

## Table of Contents

<u>Chap./Par.</u>	<u>Title</u>	<u>Page</u>
	List of Effective Pages .....	A
	Service Bulletins .....	B
	Design Change Notices .....	C
	Alphabetical List of Parts Breakdowns .....	ii
	Numerical List of Parts Breakdowns .....	v
	Section 1 – General Information .....	1-1
	Section 2 – Chassis .....	2-1
	Section 3 – Labels and Load Charts .....	3-1
	Section 4 – Engine .....	4-1
	Section 5 – Transmission, Axles, and Driveshafts .....	5-1
	Section 6 – Steering, Brakes, Wheels, and Tires .....	6-1
	Section 7 – Hydraulic System .....	7-1
	Section 8 – Electrical System .....	8-1
	Section 9 – Boom .....	9-1
	Section 10 – Cab and Consoles .....	10-1
	Section 11 – Boom Attachments .....	11-1
	Numerical and Alphabetical Indexes .....	Index 1

## Alphabetical List of Parts Breakdowns

<u>Title</u>	<u>Figure No.</u>	<u>Page No.</u>
AC Compressor Assembly .....	4-2.....	4-6
Accelerator Pedal Assembly .....	10-5.....	10-15
Air Cleaner Assembly.....	4-4.....	4-11
Auxiliary Handle Assembly.....	7-7.....	7-16
Axial Piston Pump .....	7-2.....	7-5
Basic Assembly .....	2-1.....	2-2
Battery Disconnect Switch Assembly.....	8-7.....	8-14
Boom Hose Kit .....	7-17.....	7-36
Boom Lift Cylinder Assembly .....	7-8.....	7-18
Brake Charge Valve Assembly .....	6-4.....	6-8
Brake Valve Assembly .....	6-3.....	6-6
Cab Assembly .....	10-1.....	10-2
Carriage Tilt Cylinder Assembly.....	7-11.....	7-24
Chassis Assembly – Axles .....	2-4.....	2-11
Chassis Assembly – Covers & Console.....	2-5.....	2-16
Chassis Assembly – Drive .....	2-3.....	2-7
Chassis Assembly – Engine.....	2-2.....	2-4
Chassis Hose Kit.....	7-18.....	7-38
Control Panel Assembly .....	10-3.....	10-11
Cooler Cover Assembly .....	2-8.....	2-28
Dash Console Assembly .....	10-2.....	10-7
Declutch Valve Assembly.....	7-15.....	7-32
Electrical Center Assembly .....	8-2.....	8-4
Electrical Panel Assembly.....	8-1.....	8-2
Engine Assembly .....	4-1.....	4-2
Engine Cover Assembly.....	2-6.....	2-20
Engine Relay Assembly .....	8-6.....	8-12
Engine Tray Assembly .....	2-9.....	2-30
Engine Tray with Engine .....	2-10.....	2-34
Extend Cylinder Assembly .....	7-9.....	7-20
Extend Cylinder Support Assembly .....	7-10.....	7-22
Fork Pin Assembly .....	11-3.....	11-6

## Alphabetical List of Parts Breakdowns – Cont.

<u>Title</u>	<u>Figure No.</u>	<u>Page No.</u>
Fork Positioning Carriage.....	11-2.....	11-4
Fork Positioning Carriage Hose Kit.....	7-19.....	7-41
Front Axle Assembly .....	5-2.....	5-5
Front Driveshaft Assembly.....	5-4.....	5-9
Front Handle Assembly.....	7-5.....	7-12
Fuel Tank Assembly.....	4-5.....	4-13
Hitch Pin Assembly .....	2-12.....	2-39
Hydraulic Tank Assembly.....	7-1.....	7-2
Inner Boom Assembly .....	9-5.....	9-17
Isolation Manifold Assembly.....	7-13.....	7-28
Labels and Load Charts .....	3-1.....	3-1
LH Wheel Assembly.....	6-6.....	6-12
Load Sense Dump Valve Assembly.....	7-14.....	7-30
Lynch Pin Assembly.....	11-4.....	11-8
Park Brake Release Valve Assembly .....	7-16.....	7-34
Pintle Hook Assembly .....	2-11.....	2-37
Pressure Filter Assembly .....	7-3.....	7-8
Radiator Assembly .....	4-3.....	4-9
Rear Axle Assembly.....	5-3.....	5-7
Rear Cover Assembly .....	2-7.....	2-25
Rear Driveshaft Assembly.....	5-5.....	5-11
Rear Light Assembly .....	8-9.....	8-18
RH Wheel Assembly .....	6-5.....	6-10
Seat Assembly .....	10-6.....	10-17
Side Console Assembly .....	7-4.....	7-10
Side Control Console Assembly .....	10-4.....	10-13
Slide Block Assembly.....	9-6.....	9-21
Solenoid Assembly.....	8-8.....	8-16
Standard Carriage Assembly .....	11-1.....	11-2
Steering Column Assembly.....	6-1.....	6-2
Steering Valve Assembly .....	6-2.....	6-4
Sway Cylinder Assembly.....	7-12.....	7-26
Sway Handle Assembly .....	7-6.....	7-14
Terminal Strip Assembly .....	8-3.....	8-6



## Alphabetical List of Parts Breakdowns – Cont.

<u>Title</u>	<u>Figure No.</u>	<u>Page No.</u>
Terminal Strip Assembly .....	8-4.....	8-8
Terminal Strip Assembly .....	8-5.....	8-10
Transfer Case Assembly.....	5-1.....	5-2
XR620 Boom Assembly .....	9-1.....	9-2
XR620 Outer Boom Assembly .....	9-3.....	9-10
XR621 Boom Assembly .....	9-2.....	9-6
XR621 Outer Boom Assembly .....	9-4.....	9-13

## Numerical List of Parts Breakdowns

<b><u>Figure No.</u></b>	<b><u>Title</u></b>	<b><u>Page No.</u></b>
2-1	Basic Assembly	2-2
2-2	Chassis Assembly – Engine	2-4
2-3	Chassis Assembly – Drive	2-7
2-4	Chassis Assembly – Axles	2-11
2-5	Chassis Assembly – Covers & Console	2-16
2-6	Engine Cover Assembly	2-20
2-7	Rear Cover Assembly	2-25
2-8	Cooler Cover Assembly	2-28
2-9	Engine Tray Assembly	2-30
2-10	Engine Tray with Engine	2-34
2-11	Pintle Hook Assembly	2-37
2-12	Hitch Pin Assembly	2-39
3-1	Labels and Load Charts	3-1
4-1	Engine Assembly	4-2
4-2	AC Compressor Assembly	4-6
4-3	Radiator Assembly	4-9
4-4	Air Cleaner Assembly	4-11
4-5	Fuel Tank Assembly	4-13
5-1	Transfer Case Assembly	5-2
5-2	Front Axle Assembly	5-5
5-3	Rear Axle Assembly	5-7
5-4	Front Driveshaft Assembly	5-9
5-5	Rear Driveshaft Assembly	5-11
6-1	Steering Column Assembly	6-2
6-2	Steering Valve Assembly	6-4
6-3	Brake Valve Assembly	6-6
6-4	Brake Charge Valve Assembly	6-8
6-5	RH Wheel Assembly	6-10
6-6	LH Wheel Assembly	6-12
7-1	Hydraulic Tank Assembly	7-2
7-2	Axial Piston Pump Assembly	7-5
7-3	Pressure Filter Assembly	7-8

## Numerical List of Parts Breakdowns – Cont.

<u>Figure No.</u>	<u>Title</u>	<u>Page No.</u>
7-4	Side Console Assembly.....	7-10
7-5	Front Handle Assembly .....	7-12
7-6	Sway Handle Assembly.....	7-14
7-7	Auxiliary Handle Assembly .....	7-16
7-8	Boom Lift Cylinder Assembly.....	7-18
7-9	Extend Cylinder Assembly.....	7-20
7-10	Extend Cylinder Support Assembly .....	7-22
7-11	Carriage Tilt Cylinder Assembly .....	7-24
7-12	Sway Cylinder Assembly .....	7-26
7-13	Isolation Manifold Assembly .....	7-28
7-14	Load Sense Dump Valve Assembly .....	7-30
7-15	Declutch Valve Assembly .....	7-32
7-16	Park Brake Release Valve Assembly.....	7-34
7-17	Boom Hose Kit.....	7-36
7-18	Chassis Hose Kit .....	7-38
7-19	Fork Positioning Hose Kit .....	7-41
8-1	Electrical Panel Assembly .....	8-2
8-2	Electrical Center Assembly.....	8-4
8-3	Terminal Strip Assembly.....	8-6
8-4	Terminal Strip Assembly.....	8-8
8-5	Terminal Strip Assembly.....	8-10
8-6	Engine Relay Assembly.....	8-12
8-7	Battery Disconnect Switch Assembly .....	8-14
8-8	Solenoid Assembly .....	8-16
8-9	Rear Light Assembly .....	8-18
9-1	XR620 Boom Assembly.....	9-2
9-2	XR621 Boom Assembly.....	9-6
9-3	XR620 Outer Boom Assembly.....	9-10
9-4	XR621 Outer Boom Assembly.....	9-13
9-5	Inner Boom Assembly .....	9-17
9-6	Slide Block Assembly .....	9-21
10-1	Cab Assembly.....	10-2
10-2	Dash Console Assembly .....	10-7
10-3	Control Panel Assembly .....	10-11

## Numerical List of Parts Breakdowns – Cont.

<u>Figure No.</u>	<u>Title</u>	<u>Page No.</u>
10-4	Side Control Console Assembly	10-13
10-5	Accelerator Pedal Assembly	10-15
10-6	Seat Assembly	10-17
11-1	Standard Carriage Assembly	11-2
11-2	Fork Positioning Carriage	11-4
11-3	Fork Pin Assembly	11-6
11-4	Lynch Pin Assembly	11-8

THIS PAGE INTENTIONALLY LEFT BLANK

# Section 1

## General Information

**Table 1-1. Abbreviations & Acronyms**

<u>Term</u>	<u>Meaning</u>
A	Amperes
ASTM	American Society for Testing and Materials
AWG	American Wire Gauge
BHC	Button head cap
BKDN	Breakdown
DIA	Diameter
DPDT	Double-pole, double-throw
FSHC	Flat socket head cap
FTG	Fittings
HHC	Hex head cap
ID	Inside diameter
LG	Long
MM	Millimeter
NHA	Next higher assembly
NPT	National pipe thread
OD	Outside diameter
OHM	Oval head machine
PHM	Pan head machine
PWH	Pan washer head
QD	Quick-Disconnect
REF	Reference
REG	Regular
SAE	Society of Automotive Engineers
SBHC	Socket button head cap
SHC	Socket head cap
SHS	Socket head shoulder

<b><u>Term</u></b>	<b><u>Meaning</u></b>
SPDT	Single-throw, double-pole
SPST	Single-pole, single-throw
STR	Straight
THD	Thread
UNC	Unified National Coarse
UNF	Unified National Fine
V	Volts

## **Section 2**

### **Chassis**



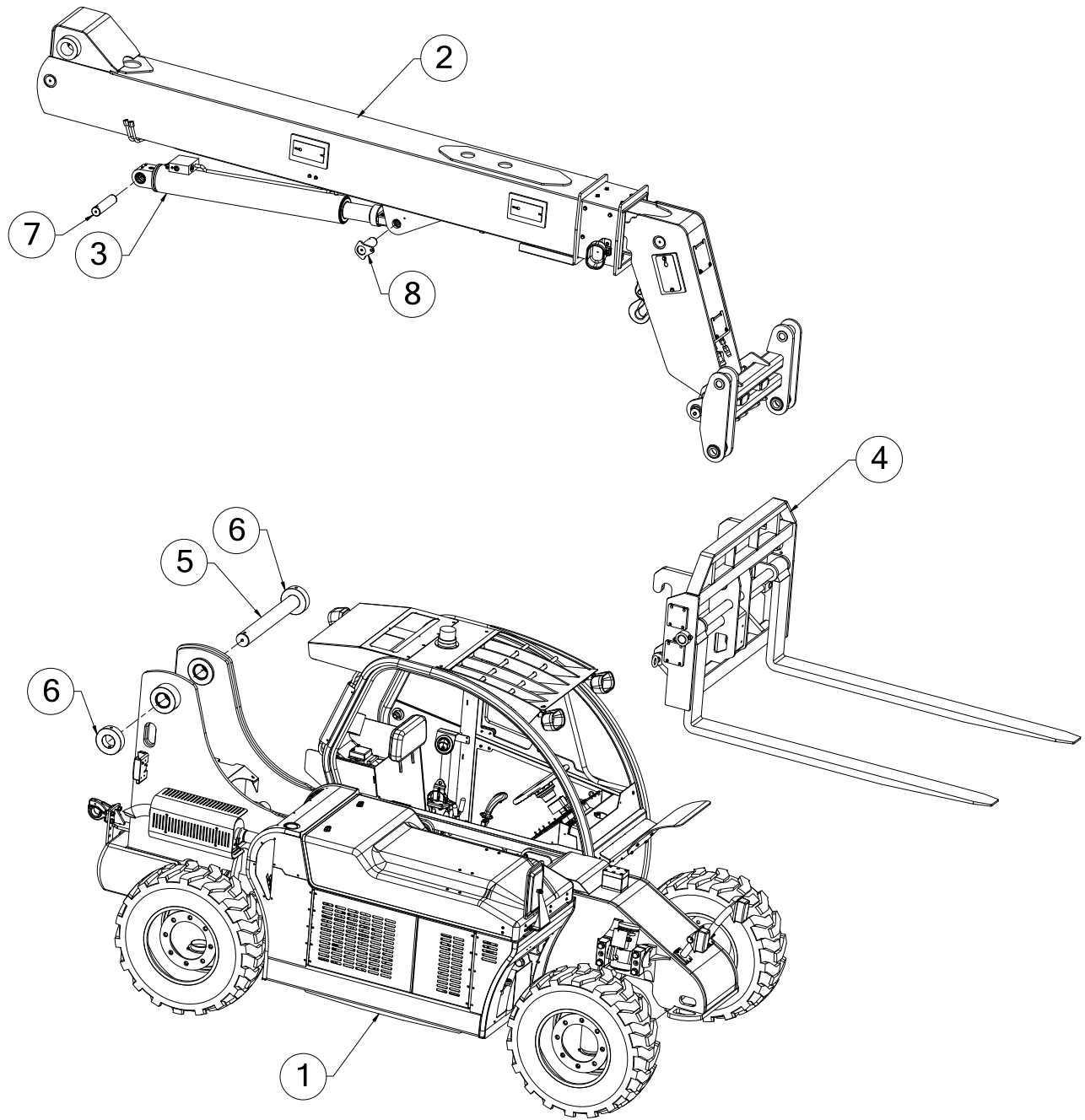


Figure 2-1. Basic Assembly

**Table 2-1. Basic Assembly**

<b>Figure &amp; Item No.</b>	<b>Part No.</b>	<b>Description</b>	<b>Quantity</b>	<b>Use On</b>
–	30950-002-01	Basic assembly	–	–
2-1-1	30951-002-01	Chassis assembly – engine	1	–
2-1-2	30030-000-01	Low pivot boom assembly	1	–
2-1-3	30620-000	Lift cylinder assembly	1	–
2-1-4	30700-000	Fork positioning carriage	1	–
2-1-5	30217-000	Boom pivot pin	1	–
2-1-6	30218-000	Pivot retaining ring	2	–
2-1-7	30687-000	Round cut section	1	–
2-1-8	30691-000	Pin weldment	1	–

Refer to Section 1 for the definition of acronyms and abbreviations used in the Description Column.

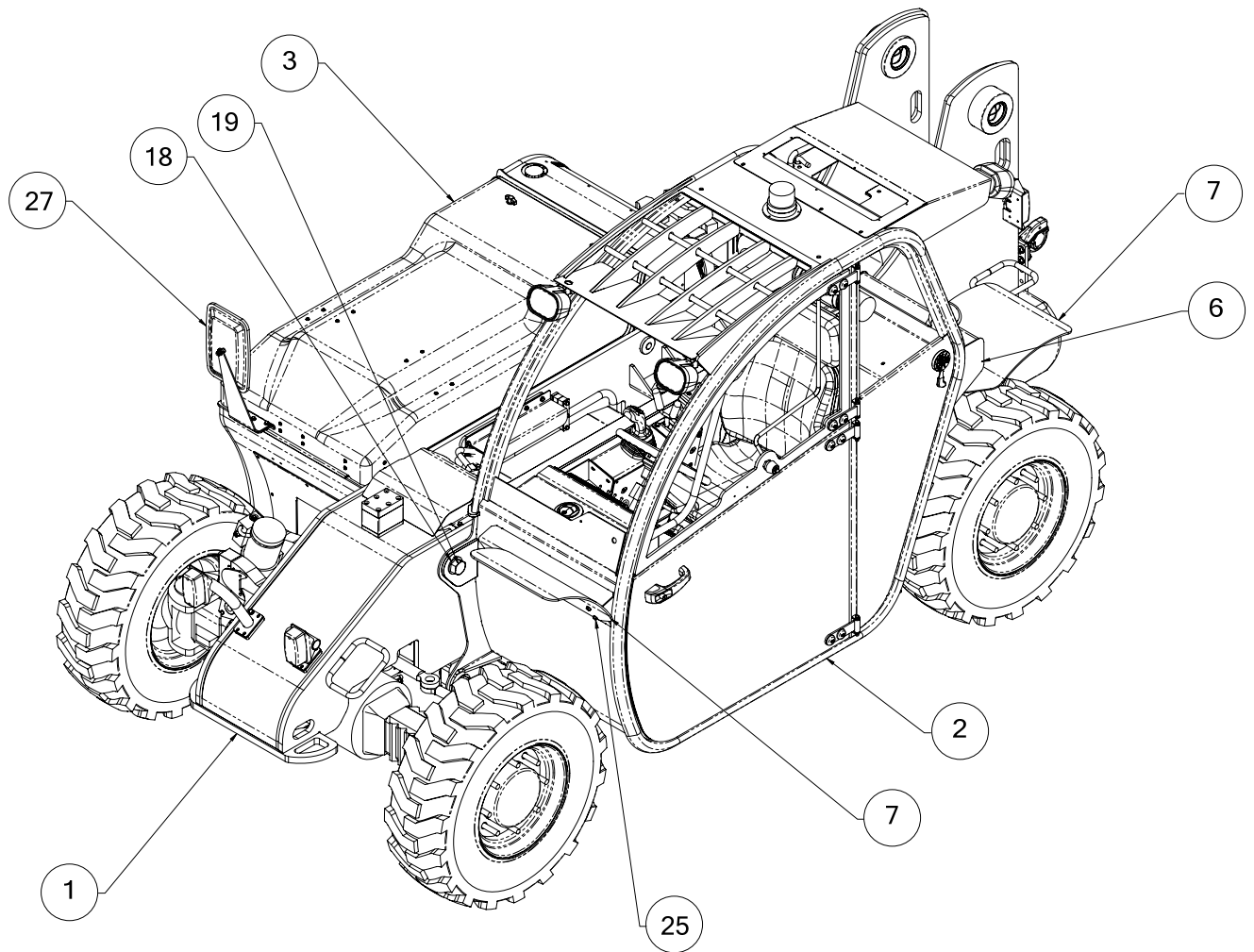


Figure 2-2. Chassis Assembly – Engine

**Table 2-2. Chassis Assembly – Engine**

<b>Figure &amp; Index No.</b>	<b>Part No.</b>	<b>Description</b>	<b>Quantity</b>	<b>Use On</b>
–	30951-002-01	Chassis assembly – engine	–	–
2-2-1	30070-001-01	Chassis assembly – covers & console	1	–
2-2-2	30956-001-01	Enclosed cab assembly	1	–
2-2-3	30500-001	Engine tray assembly	1	–
2-2-4	30815-000	Exhaust tube	1	–
2-2-5	30611-000	Fuel sender cover	1	–
2-2-6	30520-000	Fuel tank assembly	1	–
2-2-7	25646-000	Splash guard	2	–
2-2-8	30870-000	Tube weldment	1	–
2-2-9	30872-000	Pump tube	1	–
2-2-10	30874-000	Hard line tube	1	–
2-2-11	30876-000	Pump tube	1	–
2-2-12	30878-000	Suction tube	1	–
2-2-13	30894-000	Cooler return	1	–
2-2-14	30888-000	Cooler return tube	1	–
2-2-15	11001-004	Washer 1/4SAE flat ASTM	10	–
2-2-16	10000-006	Screw 1/4-20UNC HHC x 3/4	2	–
2-2-17	10900-004	Nut 1/4-20UNC reg hex	2	–
2-2-18	11001-020	Washer 1-1/4SAE flat	6	–
2-2-19	10031-016	Screw 1-1/4-12UNF HHC x 2	2	–
2-2-20	10031-032	Screw 1-1/4-12UNF HHC x 4	2	–
2-2-21	10901-020	Nut 1-1/4-12UNF	2	–
2-2-22	11001-016	Washer 1 dia SAE flat	5	–
2-2-23	10029-016	Screw 1-12UNF HHC x 2	5	–
2-2-24	11001-005	Washer 5/16SAE flat	8	–