

PERFORMANCE
INNOVATION
SELECTION



RELIABILITY
WARRANTY
VISIBILITY



Table of Contents	
Description	Page No.
SECTION 1 - GENERAL INFORMATION	2
SECTION 2 - CHASSIS	6
SECTION 3 - LABELS	32
SECTION 4 - ENGINE	45
SECTION 5 - TRANSMISSION, AXLES, & DRIVESHAFTS	55
SECTION 6 - STEERING, BRAKES, WHEELS, & TIRES	66
SECTION 7 - HYDRAULIC SYSTEM	75
SECTION 8 - ELECTRICAL SYSTEM	97
SECTION 9 - BOOM	111
SECTION 10 - CAB	133
SECTION 11 - ATTACHMENTS	162
INDEXES	168
ADDENDUM	194

SECTION 1

GENERAL INFORMATION

Abbreviations and Acronyms	
Term	Definition
A	AMPERES
ASTM	AMERICAN SOCIETY FOR TESTING AND MATERIALS
AWG	AMERICAN WIRE GAUGE
BHC	BUTTON HEAD CAP
BKDN	BREAKDOWN
DIA	DIAMETER
DPDT	DOUBLE-POLE, DOUBLE-THROW
FSHC	FLAT SOCKET HEAD CAP
FTG	FITTINGS
HHC	HEX HEAD CAP
ID	INSIDE DIAMETER
LG	LONG
MM	MILLIMETER
NHA	NEXT HIGHER ASSEMBLY
NPT	NATIONAL PIPE THREAD
OD	OUTSIDE DIAMETER
OHM	OVAL HEAD MACHINE
PHM	PAN HEAD MACHINE
PWH	PAN WASHER HEAD
QD	QUICK-DISCONNECT
REF	REFERENCE
REG	REGULAR
SAE	SOCIETY OF AUTOMOTIVE ENGINEERS
SBHC	SOCKET BUTTON HEAD CAP
SHC	SOCKET HEAD CAP
SHS	SOCKET HEAD SHOULDER
SPDT	SINGLE-POLE, DOUBLE-THROW
SPST	SINGLE-POLE, SINGLE-THROW
STR	STRAIGHT
THD	THREAD
UNC	UNIFIED NATIONAL COARSE
UNF	UNIFIED NATIONAL FINE
V	VOLTS

Numerical List of Parts Breakdowns		
Figure No.	Description	Page No.
2-1	FINAL ASSEMBLY	7
2-2	CHASSIS ASSEMBLY - CAB & COVERS	9
2-3	CHASSIS ASSEMBLY - ENGINE	15
2-4	CHASSIS ASSEMBLY - AXLES	23
3-1	LABELS AND LOAD CHARTS	33
4-1	ENGINE TRANSMISSION ASSEMBLY	46
4-2	RADIATOR ASSEMBLY	50
4-3	AIR CLEANER ASSEMBLY	52
4-4	FUEL TANK ASSEMBLY	54
5-1	TRANSMISSION & PUMP ASSEMBLY	56
5-2	FRONT AXLE ASSEMBLY	59
5-3	REAR AXLE ASSEMBLY	61
5-4	FRONT DRIVESHAFT ASSEMBLY	64
5-5	REAR DRIVESHAFT ASSEMBLY	65
6-1	STEERING COLUMN ASSEMBLY	67
6-2	STEER CYLINDER ASSEMBLY	68
6-3	STEERING SENSOR ASSEMBLY	69
6-4	BRAKE RETURN MANIFOLD ASSEMBLY	70
6-5	BRAKE RETURN FILTER ASSEMBLY	71
6-6	BRAKE CHARGE VALVE ASSEMBLY	72
6-7	ACCUMULATOR ASSEMBLY	73
6-8	WHEEL TIRE ASSEMBLY	74
7-1	HYDRAULIC TANK ASSEMBLY	76
7-2	HYDRAULIC TANK LID ASSEMBLY	77
7-3	HIGH-PRESSURE FILTER / STEERING VALVE ASSEMBLY	78
7-4	DISTRIBUTION MANIFOLD ASSEMBLY	79
7-5	ISOLATION MANIFOLD ASSEMBLY	81
7-6	BOOM MANIFOLD ASSEMBLY	83
7-7	FORK POSITIONING MANIFOLD ASSEMBLY	84
7-8	OPERATOR CONTROL VALVE ASSEMBLY	85
7-9	FRONT HANDLE ASSEMBLY	87
7-10	SWAY HANDLE ASSEMBLY	88
7-11	MASTER CYLINDER ASSEMBLY	89
7-12	LIFT CYLINDER ASSEMBLY	90
7-13	EXTEND CYLINDER ASSEMBLY	91

Numerical List of Parts Breakdowns		
Figure No.	Description	Page No.
7-14	EXTEND CYLINDER HOUSING ASSEMBLY	92
7-15	FRONT AXLE CYLINDER ASSEMBLY	93
7-16	REAR AXLE CYLINDER ASSEMBLY	94
7-17	REAR AXLE LOCK MANIFOLD ASSEMBLY	96
8-1	ELECTRICAL ASSEMBLY	98
8-2	ELECTRICAL CENTER ASSEMBLY	101
8-3	RELAY PANEL ASSEMBLY	102
8-4	TERMINAL STRIP ASSEMBLY	104
8-5	TERMINAL STRIP ASSEMBLY	105
8-6	TERMINAL STRIP ASSEMBLY	106
8-7	BATTERY DISCONNECT SWITCH ASSEMBLY	107
8-8	FUSE BLOCK ASSEMBLY	108
8-9	SOLENOID ASSEMBLY	109
9-1	BOOM ASSEMBLY	112
9-2	INNER BOOM ASSEMBLY	119
9-3	OUTER BOOM ASSEMBLY	126
9-4	ANGLE INDICATOR ASSEMBLY	129
9-5	SLIDE BLOCK ASSEMBLY	130
9-6	OUTER BOOM ROLLER ASSEMBLY	131
9-7	ROLLER ASSEMBLY	132
10-1	CAB ASSEMBLY	134
10-2	FRONT CONTROL CONSOLE ASSEMBLY	141
10-3	FRONT CONTROL PANEL ASSEMBLY	145
10-4	CONTROL ENCLOSURE SUBASSEMBLY	146
10-5	CONTROL VALVE COVER ASSEMBLY	147
10-6	CONTROL VALVE COVER SUBASSEMBLY	149
10-7	ACCELERATOR PEDAL ASSEMBLY	150
10-8	FRONT COVER ASSEMBLY	151
10-9	ENGINE COVER ASSEMBLY	153
10-10	RADIATOR COVER ASSEMBLY	155
10-11	BATTERY COVER ASSEMBLY	157
10-12	REAR LIGHT ASSEMBLY	159
10-13	RADIATOR SHROUD ASSEMBLY	160
11-1	FORK POSITIONING CARRIAGE ASSEMBLY	163

SECTION 2

CHASSIS

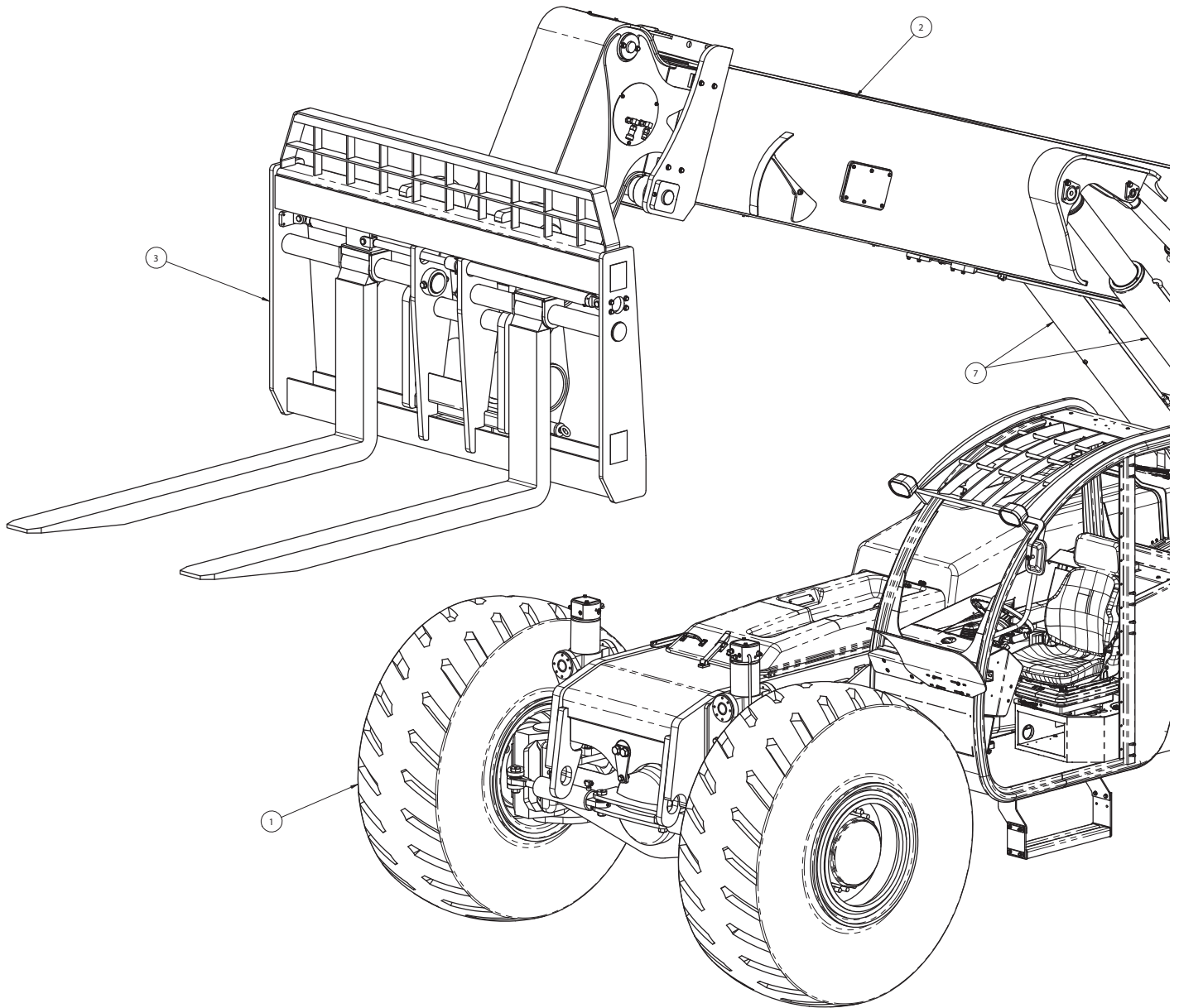


FIGURE 2-1. FINAL ASSEMBLY (32000-000)

ITEM	PART NUMBER	DESCRIPTION	QTY
-	32000-000	FINAL ASSEMBLY	-
1	32002-000	ASSY, CHASSIS CAB/COVERS	1
2	32005-000	ASSY, BOOM 4030	1
3	32095-000	ASSY, 96" ADJ CRG GRP E	1
4	27063-000	LIFT CYLINDER PIN ASSY	2
5	29728-071	KIT, HDWR-BOOM INST	1
5.1	11001-008	WASHER 1/2 SAE FLAT	4
5.2	10004-008	SCREW 1/2-13UNC HHC X 1	4
6	27076-001	PIN ASSY	2
7	32020-000	LIFT CYLINDER ASSY	2

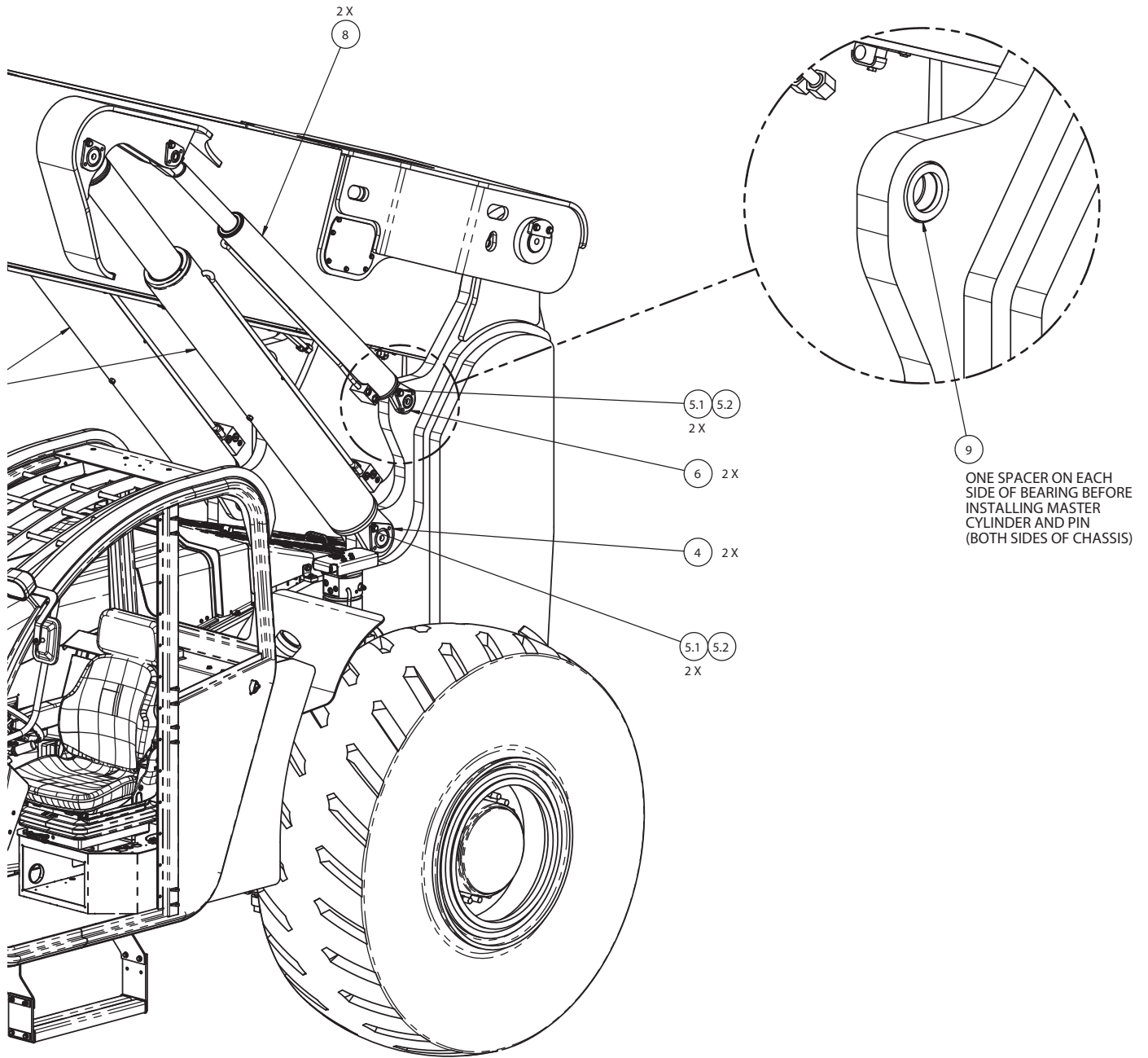


FIGURE 2-1. FINAL ASSEMBLY (32000-000)

ITEM	PART NUMBER	DESCRIPTION	QTY
8	32019-000	MASTER CYLINDER ASSY	2
9	32195-000	SPACER RING	4

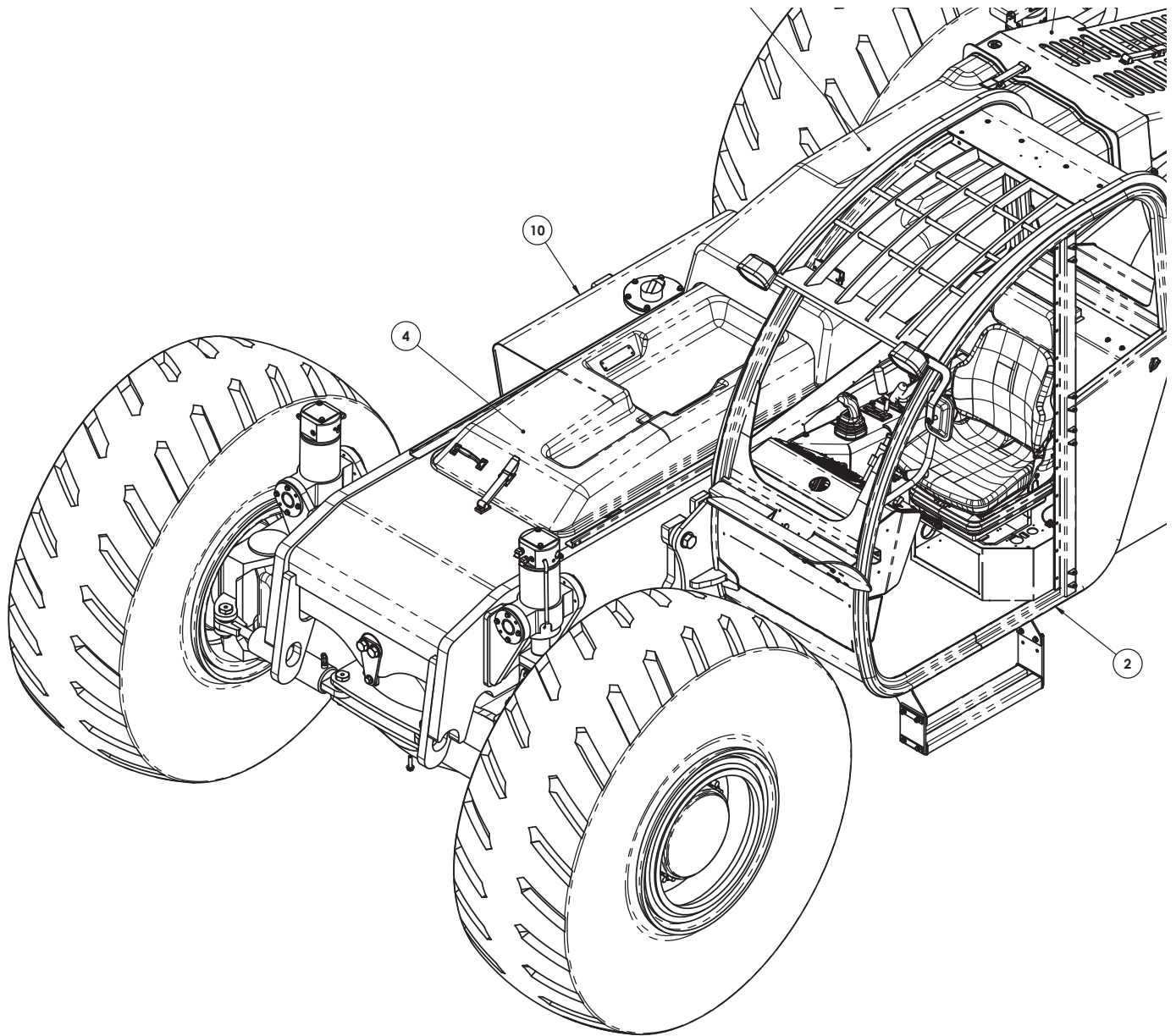


FIGURE 2-2. CHASSIS ASSEMBLY - CAB & COVERS (32002-000)

ITEM	PART NUMBER	DESCRIPTION	QTY
-	32002-000	CHASSIS ASSEMBLY - CAB & COVERS	-
1	32003-000	ASSY, ENGINE INSTALL	1
2	32013-000	ASSY, ENCLOSED CAB 4030	1
3	32107-000	BRKT, HOSE SEAL/CLAMP	2
4	25758-001	FRONT COVER ASSY	1
5	13552-001	DRAW LATCH (REF 13552-000)	1
6	29708-000	ASSY, ENGINE COVER 1270 TIER IV	1
7	32017-000	ASSY, RAD SHROUD 4030	1
8	25843-003	ASSY, RADIATOR COVER TIER IV	1
9	26998-000	BATTERY COVER ASSY	1

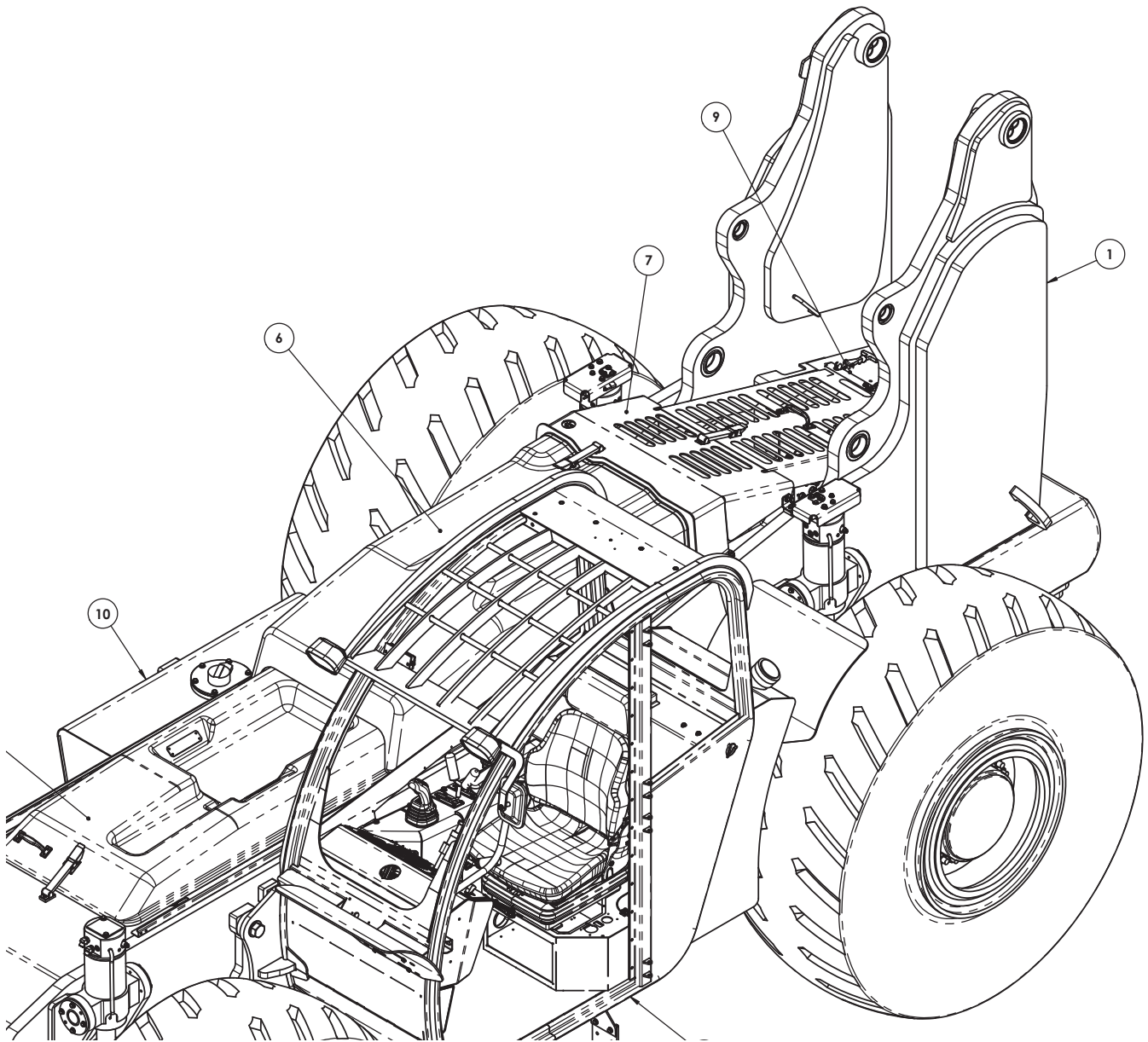


FIGURE 2-2. CHASSIS ASSEMBLY - CAB & COVERS (32002-000)

ITEM	PART NUMBER	DESCRIPTION	QTY
10	29010-000	HYDRAULIC TANK ASSY	1
11	27524-003	ASSY, CONTROL VALVE COVER	1
12	27121-000	ISOLATER RETAINER PLATE	4
13	25064-018	KIT, HDWR-HYD TANK	1
13.1	11001-008	WASHER 1/2 SAE FLAT	4
13.2	10004-024	SCREW 1/2-13UNC HHC X 3	4
14	11252-001	GAS SPRING	2
15	11253-000	BALL END-GAS SPRING	2
16	29725-024	KIT, HDWR-CAB	1
16.1	11001-020	WASHER 1-1/4 SAE FLAT	6

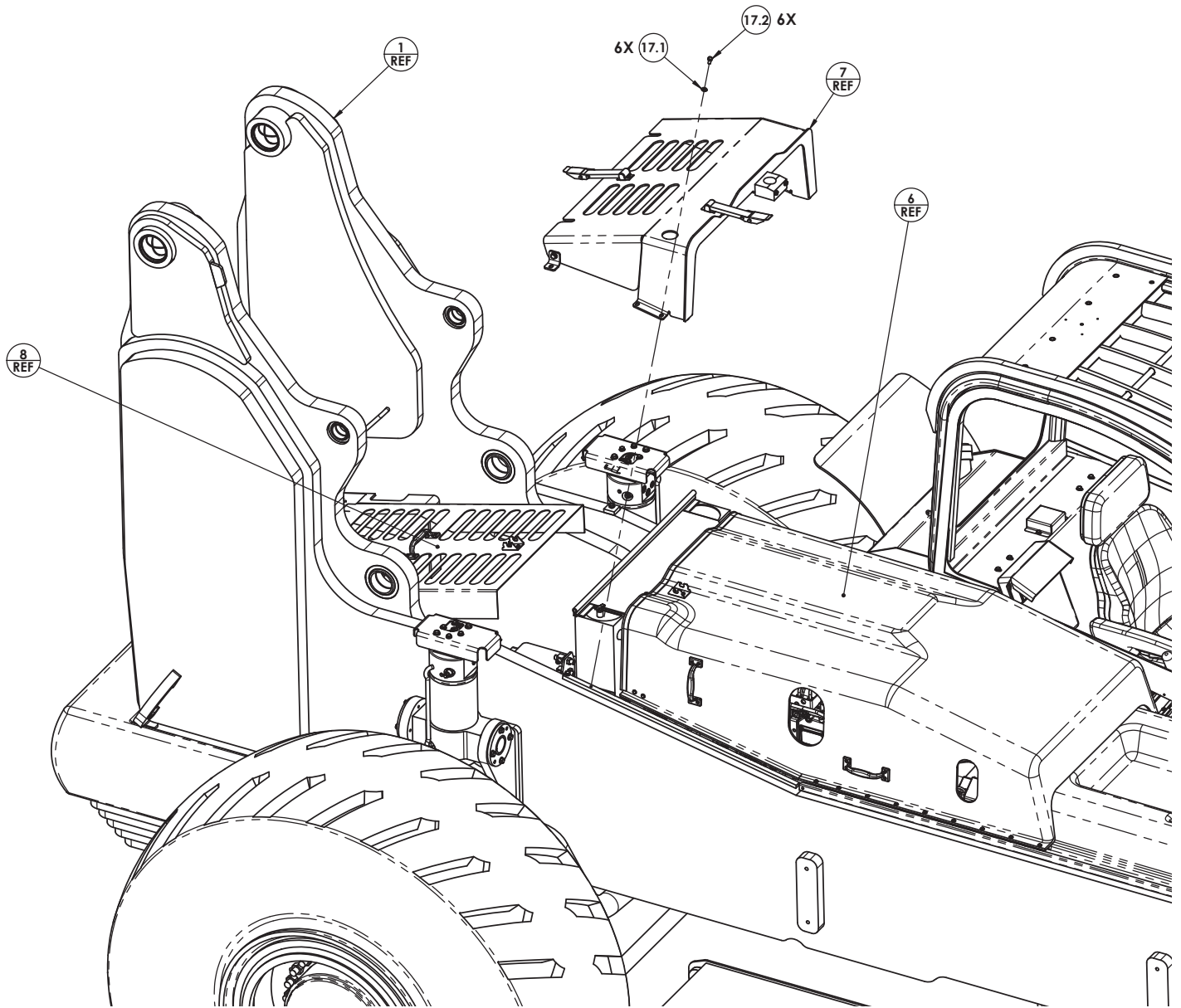


FIGURE 2-2. CHASSIS ASSEMBLY - CAB & COVERS (32002-000)

ITEM	PART NUMBER	DESCRIPTION	QTY
16.2	10909-020	NUT 1-1/4-12UNF HEX LOCK REG	2
16.3	10031-040	SCREW 1-1/4 12 UNF HHC GR8 X 5 LG	2
16.4	10031-026	SCREW 1-1/4-12 UNF HHC GR8 X 3.25 LG	2
17	29728-025	KIT, HDWR-RADIATOR SHROUD	1
17.1	11001-005	WASHER FW 0.3125	6
17.2	10001-005	SCREW 5/16-18UNC HHC X 5/8	6
18	29728-034	KIT, HDWR-DRAW LATCH	1
18.1	11001-003	WASHER #10 SAE FLAT	2
18.2	10253-003	SCREW #10-24 UNC PHD X 3/8" LG	2
19	29728-035	KIT, HDWR-BATTERY COVER	1

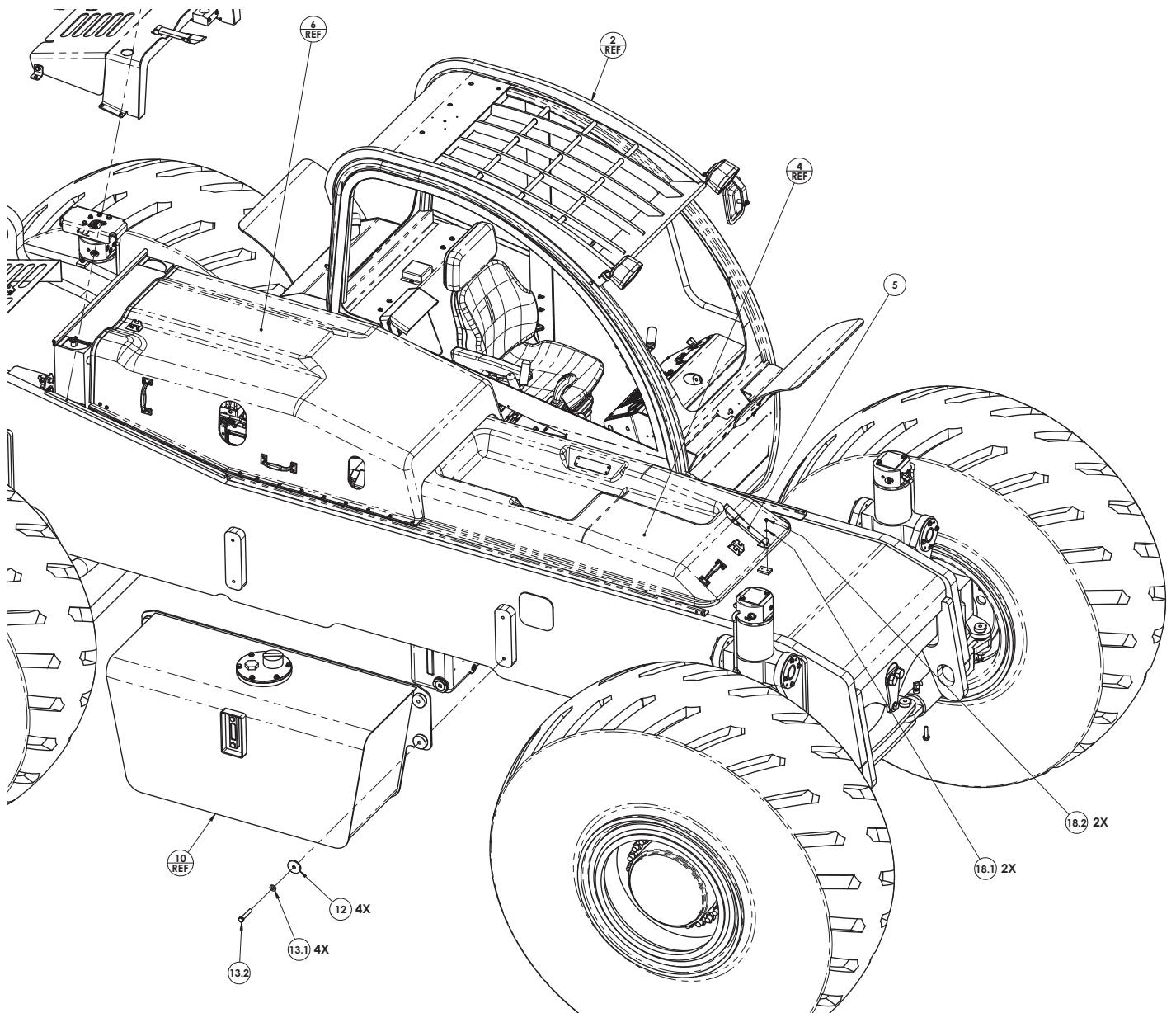


FIGURE 2-2. CHASSIS ASSEMBLY - CAB & COVERS (32002-000)

ITEM	PART NUMBER	DESCRIPTION	QTY
19.1	11001-003	WASHER #10 SAE FLAT	10
19.2	10908-003	NUT #10-24UNC HEX LOCK	5
19.3	10253-005	SCREW #10-24UNC PHM X 5/8	5
20	29728-036	KIT, HDWR-CONTROL PANEL	1
20.1	11001-006	WASHER 3/8 SAE FLAT ASTM	6
20.2	10002-006	SCREW 3/8-16UNC HHC X 3/4	6
21	13253-000	POWER DIST BLOCK	1
22	29728-044	KIT, HDWR HOSE GUIDE	1
22.1	11001-006	WASHER 3/8 SAE FLAT	4
22.2	10900-006	NUT 3/8-16UNC REG HEX	2

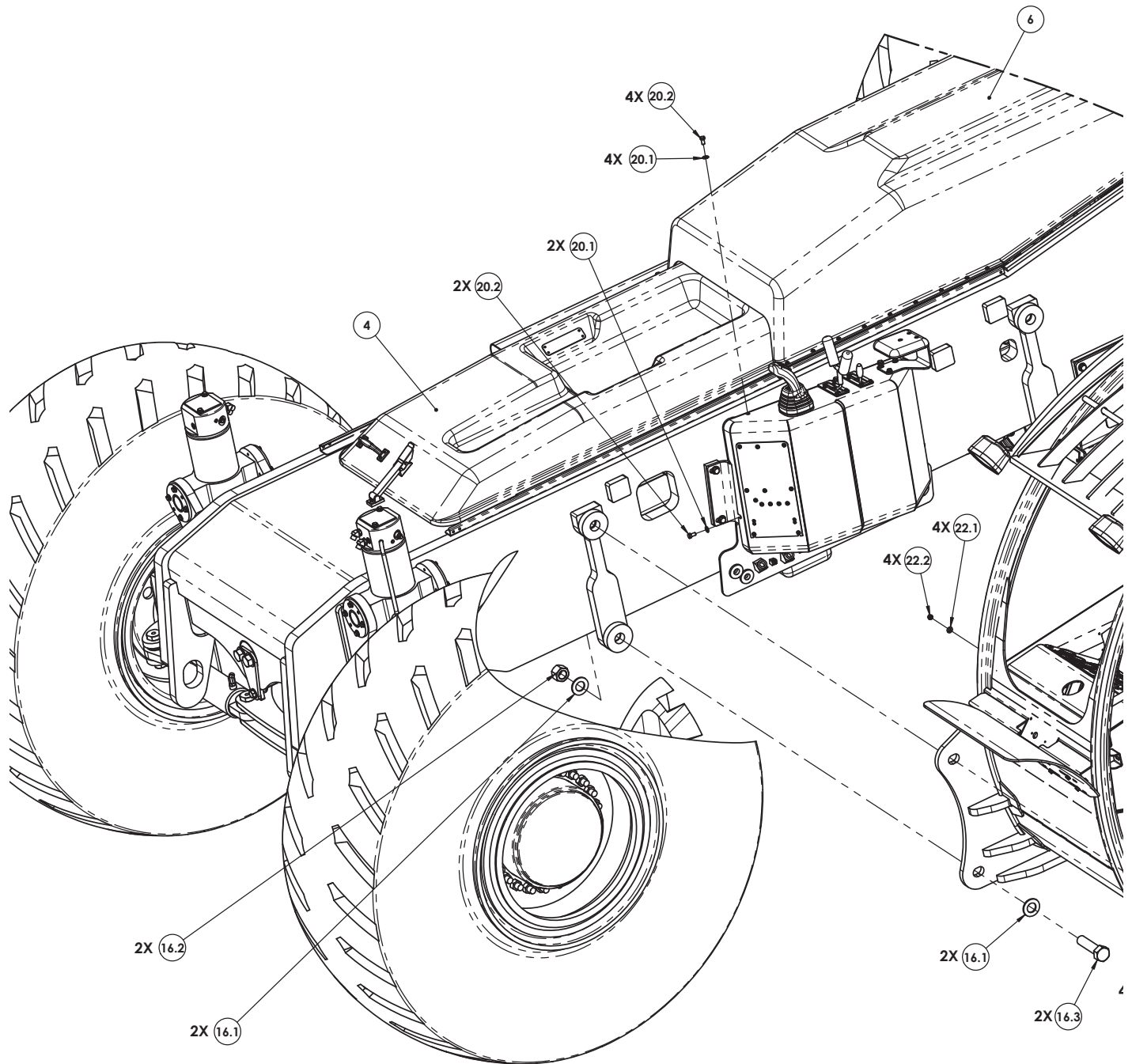


FIGURE 2-2. CHASSIS ASSEMBLY - CAB & COVERS (32002-000)

ITEM	PART NUMBER	DESCRIPTION	QTY
22.3	10002-040	SCREW 3/8-16UNC HHC x 5	2
22.4	11001-005	WASHER FW 0.3125	8
22.5	10908-005	NUT 5/16-18 UNC HEX LOCK REG	4
22.6	10002-013	HBOLT 0.3750-16x1.625x1-N	4

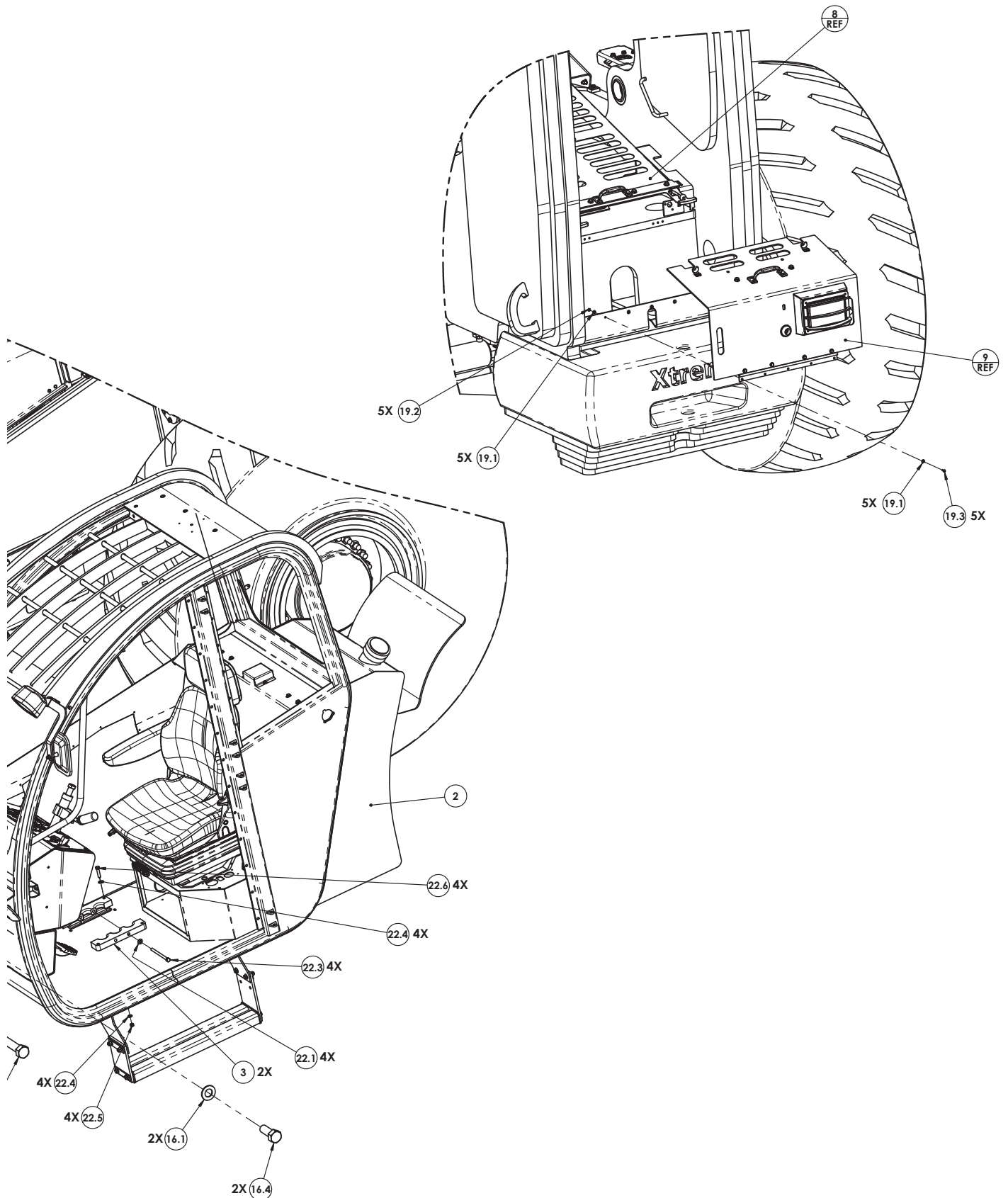


FIGURE 2-2. CHASSIS ASSEMBLY - CAB & COVERS (32002-000)

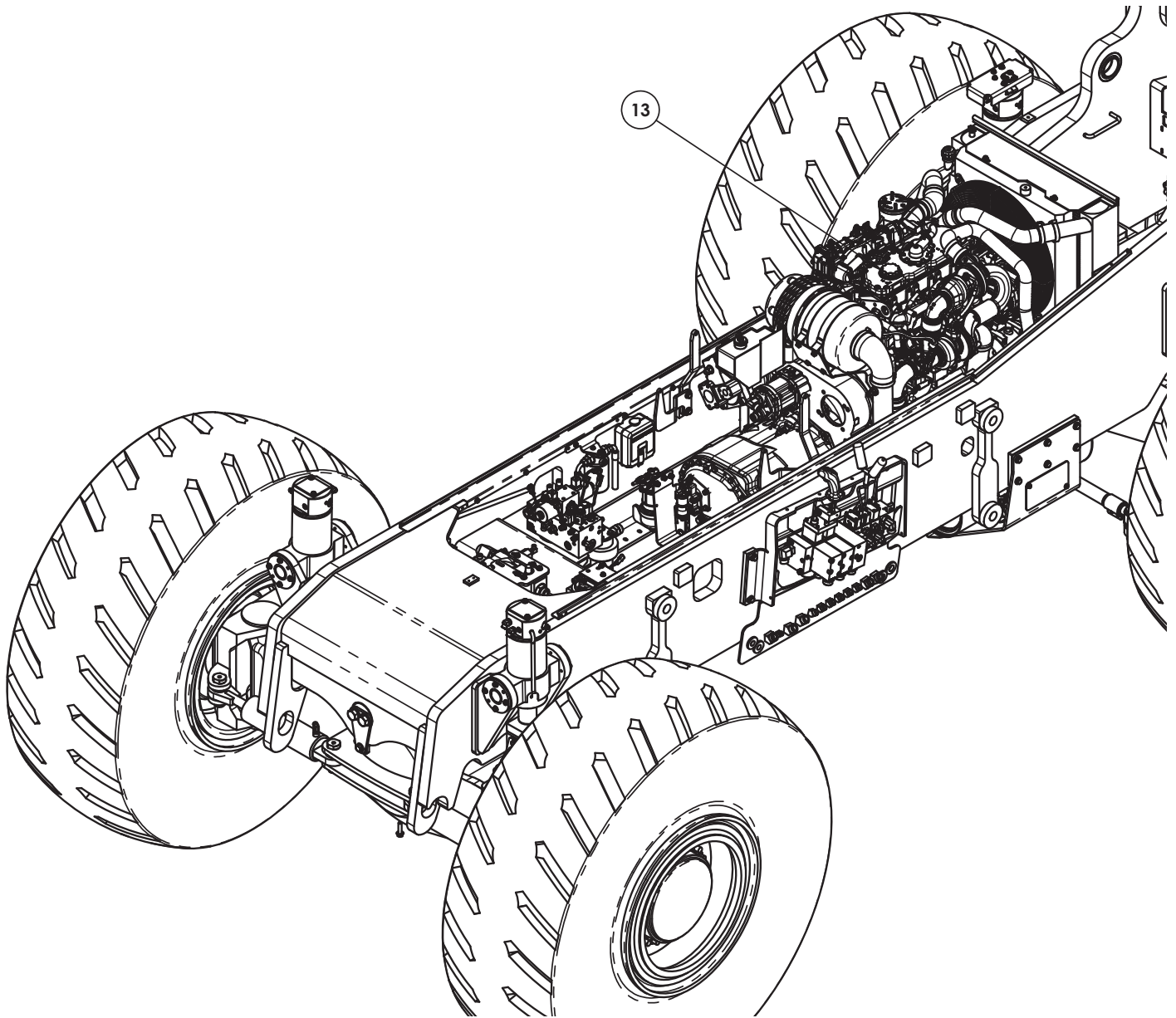


FIGURE 2-3. CHASSIS ASSEMBLY - ENGINE (32003-000)

ITEM	PART NUMBER	DESCRIPTION	QTY
-	32003-000	CHASSIS ASSEMBLY - ENGINE	-
1	32004-000	ASSY, CHASSIS AXLES/VALVES/CYL'S	1
2	12353-000	ISOLATOR MOUNT - ENGINE/TRANS	4
3	32117-000	PLATE, HEAT SHIELD	1
4	12350-000	ISOLATOR MOUNT	2
5	32063-000	PLATE, EXHAUST MNT	1
6	A13964-011	PERKINS TIER IV SECONDARY FUEL FILTER	1
7	A13964-013	FUEL FILTER PERKINS IN-LINE	1
8	A14112-010	FILTER, TRANS REMOTE MNT	1
9	32102-000	BRKT, TRANS FILTER	1

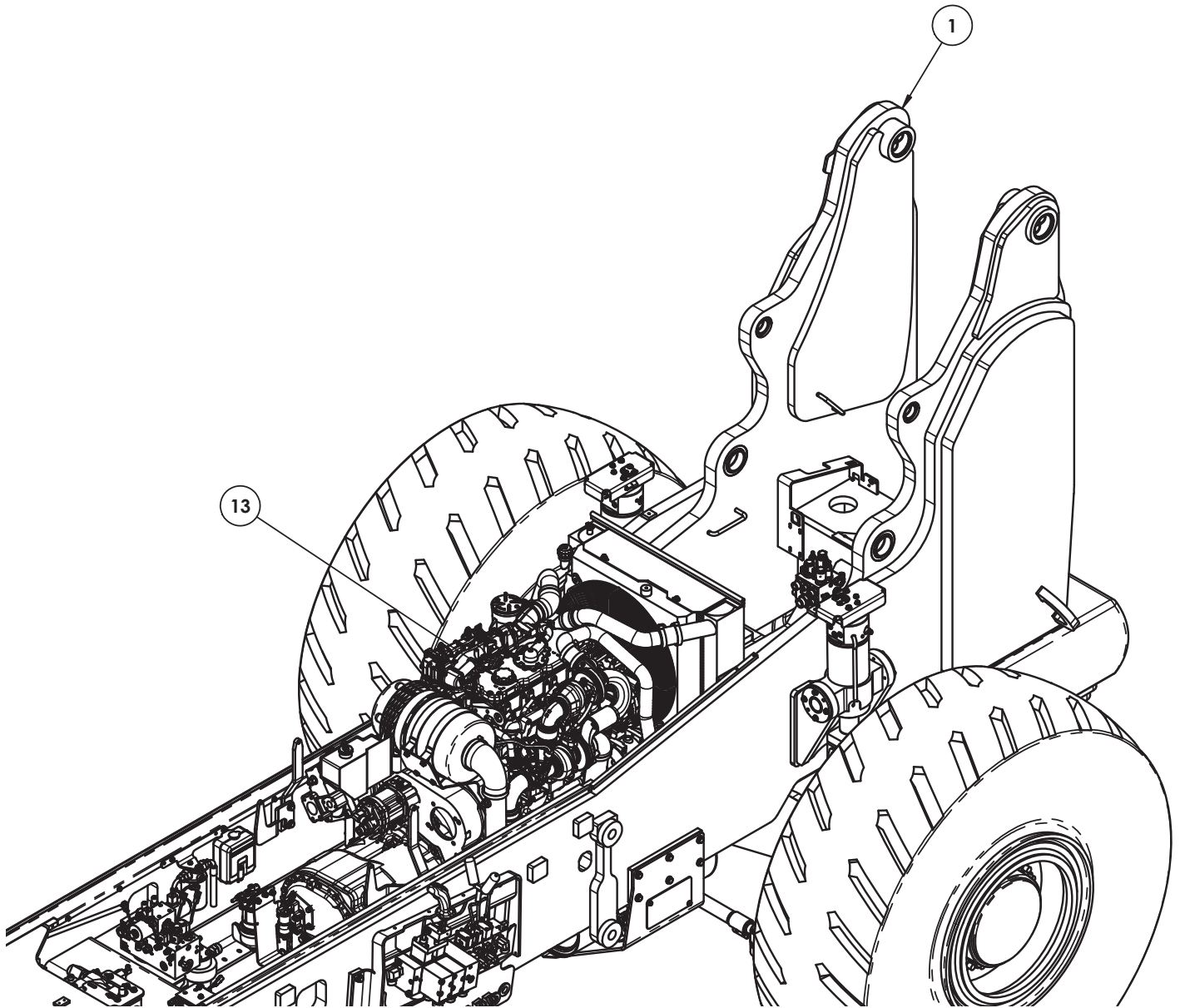


FIGURE 2-3. CHASSIS ASSEMBLY - ENGINE (32003-000)

ITEM	PART NUMBER	DESCRIPTION	QTY
10	32166-000	ASSY, VALVE TRANS HI/LO SHIFT	1
11	32116-000	COVER, ACCESS A/T CONN	1
12	32120-000	PIPE, EXHAUST	1
13	32012-000	ASSY, ENGINE-PERKINS 173 HP	1
14	32106-000	BRKT, AFTER TREATMENT	1
15	14401-001	ASSY, AFTER TREATMENT	1
16	32174-000	ASSY, FUEL FILTER	1
17	29728-019	KIT, HDWR-AFTER TREATMENT	1
17.1	11001-008	WASHER 1/2 SAE FLAT	6
17.2	11001-005	WASHER FW 0.3125	2

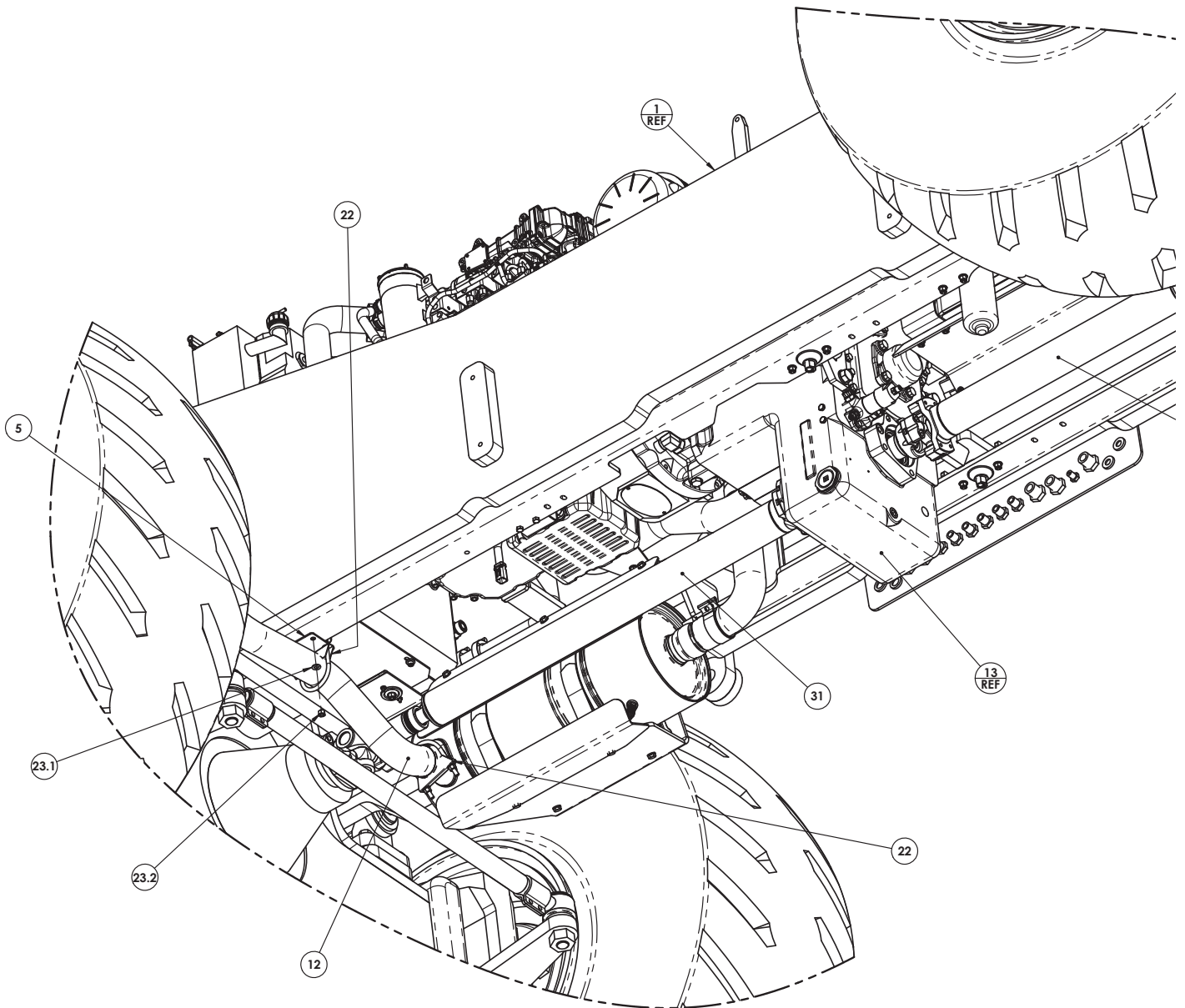


FIGURE 2-3. CHASSIS ASSEMBLY - ENGINE (32003-000)

ITEM	PART NUMBER	DESCRIPTION	QTY
17.3	11001-006	WASHER 3/8 SAE FLAT	3
17.4	11015-011	WASHER M10 FLAT METRIC	4
17.5	10405-030	SCREW M10-1.5 HHC X 30mm LG	4
17.6	10001-005	SCREW 5/16-18UNC HHC X 5/8	2
17.7	10004-009	HBOLT 0.5000-13x1.125x1.125-N	6
17.8	10002-006	SCREW 3/8-16UNC HHC X 3/4	3
18	29728-020	KIT, HDWR-ENG ACCESS	1
18.1	11015-011	WASHER M10 FLAT METRIC	4
18.2	10405-016	SCREW M10-1.50m HHC X 16mm	4
18.3	11001-006	WASHER 3/8 SAE FLAT	10

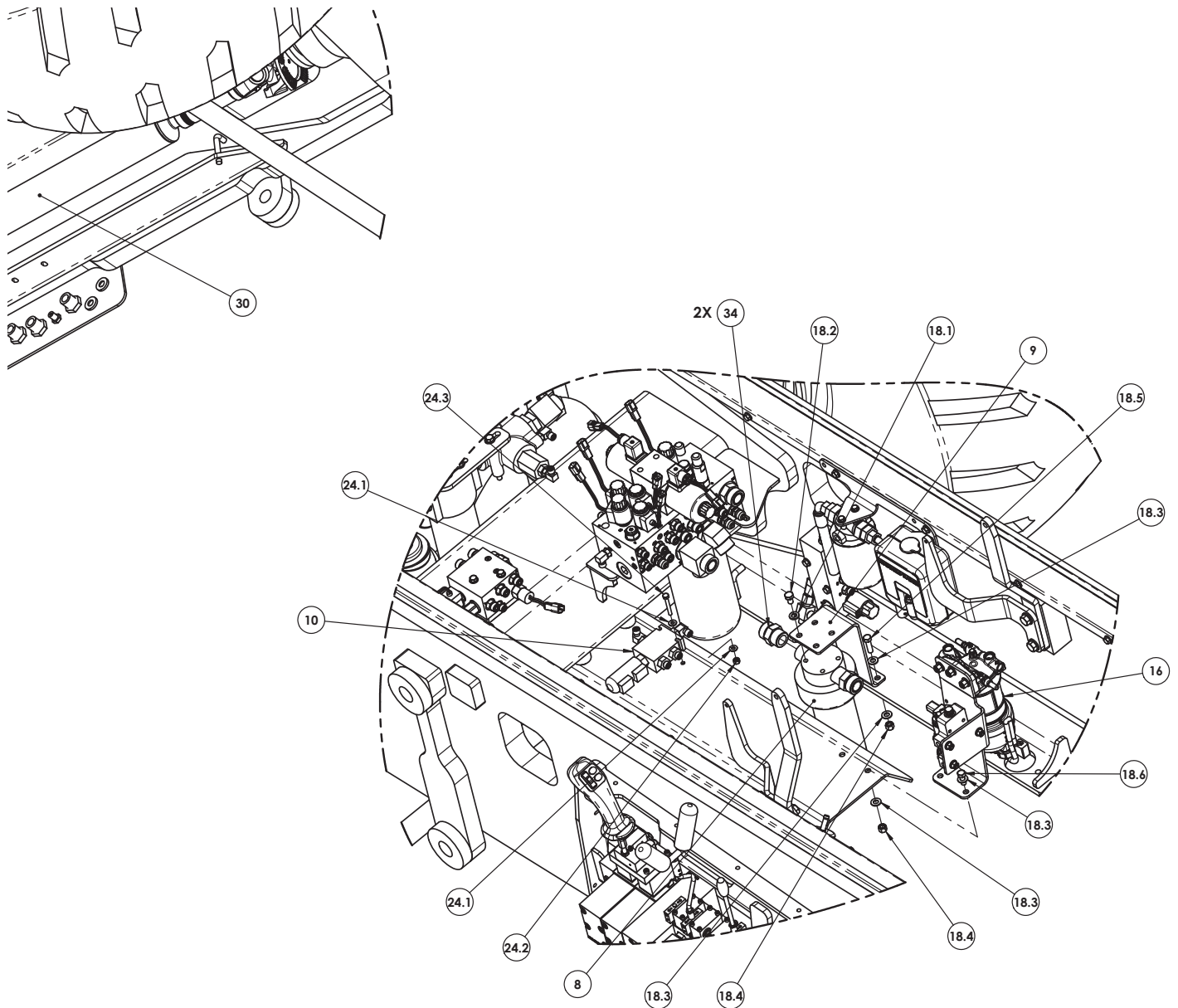


FIGURE 2-3. CHASSIS ASSEMBLY - ENGINE (32003-000)

ITEM	PART NUMBER	DESCRIPTION	QTY
18.4	10908-006	NUT 3/8-16UNC HEX LOCK REG	8
18.5	10002-011	SCREW 3/8-16UNC X 1-3/8 REG HEX	2
18.6	10002-008	SCREW 3/8-16UNC HHC X 1	2
18.7	11001-004	PREFERRED NARROW FW 0.25	2
18.8	10901-004	NUT 1/4-28UNF REG HEX	1
18.9	10002-007	SCREW 3/8-16UNC HHC X 7/8 GR8	2
18.10	10002-010	SCREW 3/8-16UNC HHC X 1-1/4	4
19	29728-003	KIT, HRDWR-TRANS ISOLATOR	2
19.1	11001-006	WASHER 3/8 SAE FLAT	8
19.2	10908-006	NUT 3/8-16UNC HEX LOCK REG	4