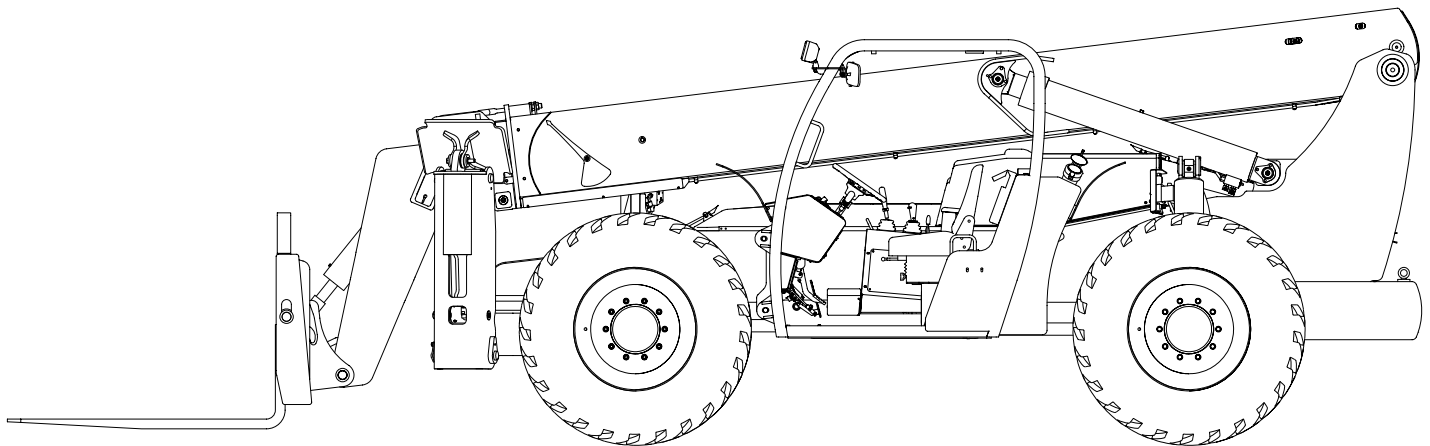




Illustrated Parts Breakdown Manual

Forward Reach Forklift

Model XR1145/1154



**Xtreme Manufacturing
1415 West Bonanza Road
Las Vegas, NV 89106
(702) 858-2404
www.xtrememanufacturing.com**

Copyright © 2005 By Xtreme Manufacturing

List of Effective Pages

This manual consists of 459 pages as listed below:

- Outside title page
- Inside title page
- Pages A through D
- Pages i through x
- Pages 1-1 through 1-2
- Pages 2-1 through 2-44
- Pages 3-1 through 3-18
- Pages 4-1 through 4-12
- Pages 5-1 through 5-10
- Pages 6-1 through 6-12
- Pages 7-1 through 7-80
- Pages 8-1 through 8-20
- Pages 9-1 through 9-70
- Pages 10-1 through 10-60
- Pages 11-1 through 11-10
- Index 1 through Index 102
- Warranty 1 through Warranty 2
- Inside back cover
- Outside back cover

THIS PAGE INTENTIONALLY LEFT BLANK

Table of Contents

<u>Chap./Par.</u>	<u>Title</u>	<u>Page</u>
	List of Effective Pages	A
	Service Bulletins	B
	Design Change Notices	C
	Alphabetical List of Parts Breakdowns	ii
	Numerical List of Parts Breakdowns	v
	Section 1 – General Information	1-1
	Section 2 – Chassis	2-1
	Section 3 – Decals and Load Charts	3-1
	Section 4 – Engine	4-1
	Section 5 – Transmission, Axles, and Driveshafts	5-1
	Section 6 – Steering, Brakes, Wheels, and Tires	6-1
	Section 7 – Hydraulic System	7-1
	Section 8 – Electrical System	8-1
	Section 9 – Boom	9-1
	Section 10 – Cab and Consoles	10-1
	Section 11 – Boom Attachments	11-1
	Numerical and Alphabetical Indexes	Index 1

Alphabetical List of Parts Breakdowns

<u>Title</u>	<u>Figure No.</u>	<u>Page No.</u>
1145 Basic Assembly.....	2-1.....	2-2
1145 Boom Assembly	9-1.....	9-2
1145 Boom Hose Kit	7-32.....	7-68
1145 Cab Assembly	10-1.....	10-2
1145 Carriage Tilt Cylinder Assembly.....	7-22.....	7-48
1145 Chassis Assembly – Axles	2-5.....	2-20
1145 Chassis Assembly – Covers & Console.....	2-7.....	2-34
1145 Chassis Assembly – Engine	2-3.....	2-6
1145 Chassis Hose Kit.....	7-34.....	7-70
1145 Extend Cylinder Assembly	7-16.....	7-36
1145 Extend Cylinder Housing Assembly.....	7-18.....	7-40
1145 Front Handle Assembly.....	7-10.....	7-24
1145 Inner Boom Assembly	9-7.....	9-32
1145 Inner Boom Subassembly	9-9.....	9-38
1145 Inner Boom Subassembly	9-11.....	9-44
1145 Mid Boom Assembly	9-5.....	9-20
1145 Operator Control Valve Assembly.....	7-8.....	7-19
1145 Outer Boom Assembly	9-3.....	9-12
1145 Side Control Console Assembly	10-6.....	10-24
1145 Tilt Cylinder Subassembly	7-24.....	7-52
1154 Basic Assembly.....	2-2.....	2-4
1154 Boom Assembly	9-2.....	9-7
1154 Boom Hose Kit	7-33.....	7-70
1154 Cab Assembly	10-2.....	10-9
1154 Carriage Tilt Cylinder Assembly.....	7-23.....	7-50
1154 Chassis Assembly – Axles	2-6.....	2-27
1154 Chassis Assembly – Covers & Console.....	2-8.....	2-39
1154 Chassis Assembly – Engine	2-4.....	2-13
1154 Chassis Hose Kit.....	7-35.....	7-76
1154 Extend Cylinder Assembly	7-17.....	7-38
1154 Extend Cylinder Housing Assembly.....	7-19.....	7-42
1154 Front Handle Assembly.....	7-11.....	7-26
1154 Inner Boom Assembly	9-8.....	9-35

Alphabetical List of Parts Breakdowns – Cont.

<u>Title</u>	<u>Figure No.</u>	<u>Page No.</u>
1154 Inner Boom Subassembly	9-10.....	9-41
1154 Inner Boom Subassembly	9-12.....	9-46
1154 Mid Boom Assembly	9-6.....	9-26
1154 Operator Control Valve Assembly.....	7-9.....	7-22
1154 Outer Boom Assembly	9-4.....	9-16
1154 Side Control Console Assembly	10-7.....	10-28
1154 Tilt Cylinder Subassembly	7-25.....	7-54
Accelerator Pedal Assembly	10-11.....	10-38
Accumulator Assembly.....	6-3.....	6-6
Accumulator Charge Valve Assembly.....	6-4.....	6-8
Adapter Assembly	9-13.....	9-48
Air Cleaner Assembly.....	4-3.....	4-11
Axle Cylinder Subassembly	7-31.....	7-66
Battery Cover Assembly.....	10-15.....	10-48
Belleville Spring Stack.....	9-21.....	9-64
Boom Lift Cylinder Assembly	7-14.....	7-32
Boom Lift Cylinder Subassembly	7-15.....	7-34
Boom Manifold Assembly.....	7-7.....	7-17
Brake Low-Pressure Switch.....	6-5.....	6-10
Brake Valve Assembly	6-2.....	6-4
Carriage Pin Assembly.....	11-4.....	11-8
Carriage Post Assembly.....	11-3.....	11-6
Chain Sheave Assembly	9-19.....	9-60
Chain Sheave Assembly	9-20.....	9-62
Console Roller Assembly	10-20.....	10-58
Control Enclosure Subassembly	10-5.....	10-21
Decals and Load Charts	3-1.....	3-2
Dipstick Tube Assembly.....	5-2.....	5-5
Distribution Manifold Assembly.....	7-5.....	7-11
Electrical Assembly	8-1.....	8-2
Electrical Center Assembly	8-2.....	8-7
Engine Cover Assembly.....	10-13.....	10-42
Engine Relay Assembly	8-5.....	8-13
Engine Transmission Assembly.....	4-1.....	4-2

Alphabetical List of Parts Breakdowns – Cont.

<u>Title</u>	<u>Figure No.</u>	<u>Page No.</u>
Extend Cylinder Pin Assembly	7-21.....	7-46
Extend Cylinder Support Assembly	7-20.....	7-44
Filler Plate Assembly.....	10-19.....	10-56
Front Axle Assembly	5-3.....	5-7
Front Axle Cylinder Assembly	7-28.....	7-60
Front Control Console Assembly	10-3.....	10-16
Front Control Panel Assembly	10-4.....	10-19
Front Cover Assembly.....	10-12.....	10-40
Handle Boot Assembly.....	10-10.....	10-36
High-Pressure Filter/Steering Valve Assembly	7-4.....	7-9
Hose Clamp Assembly.....	9-23.....	9-68
Hydraulic Tank Assembly.....	7-1.....	7-2
Hydraulic Tank Assembly.....	7-2.....	7-4
Isolation Manifold Assembly.....	7-6.....	7-14
Mid Boom Roller Assembly	9-16.....	9-54
Outer Boom Roller Assembly.....	9-15.....	9-52
Radiator and Battery Cover Assembly.....	10-16.....	10-50
Radiator Assembly	4-2.....	4-8
Radiator Cover Assembly	10-14.....	10-46
Radiator Shroud Assembly	10-18.....	10-54
Rear Axle Assembly.....	5-4.....	5-9
Rear Axle Cylinder Assembly.....	7-29.....	7-62
Rear Axle Lock Manifold Assembly	7-30.....	7-64
Rear Handle Assembly	7-13.....	7-30
Rear Light Assembly	10-17.....	10-52
Roller Assembly	9-17.....	9-56
Roller Assembly	9-18.....	9-58
Rotate Carriage Assembly	11-2.....	11-4
Rotate Cylinder Assembly.....	7-26.....	7-56
Rotate Cylinder Subassembly.....	7-27.....	7-58
Side Console Cover Assembly	10-8.....	10-32
Side Console Subassembly	10-9.....	10-34
Slide Block Assembly.....	9-14.....	9-50
Standard Carriage Assembly	11-1.....	11-2

Alphabetical List of Parts Breakdowns – Cont.

<u>Title</u>	<u>Figure No.</u>	<u>Page No.</u>
Steering Column Assembly.....	6-1.....	6-2
Sway Handle Assembly	7-12.....	7-28
Terminal Strip Assembly	8-3.....	8-9
Terminal Strip Assembly	8-4.....	8-11
Transmission and Pump Assembly.....	5-1.....	5-2
Transmission and Pump Assembly.....	7-3.....	7-6
Tube Clamp Assembly No. 2	9-22.....	9-66

Numerical List of Parts Breakdowns

<u>Figure No.</u>	<u>Title</u>	<u>Page No.</u>
2-1	1145 Basic Assembly	2-2
2-2	1154 Basic Assembly	2-4
2-3	1145 Chassis Assembly – Engine	2-6
2-4	1154 Chassis Assembly – Engine	2-13
2-5	1145 Chassis Assembly – Axles	2-20
2-6	1154 Chassis Assembly – Axles	2-27
2-7	1145 Chassis Assembly – Covers & Console	2-34
2-8	1154 Chassis Assembly – Covers & Console	2-39
3-1	Decals and Load Charts	3-2
4-1	Engine Transmission Assembly	4-2
4-2	Radiator Assembly	4-8
4-3	Air Cleaner Assembly	4-11
5-1	Transmission and Pump Assembly	5-2
5-2	Dipstick Tube Assembly	5-5
5-3	Front Axle Assembly	5-7
5-4	Rear Axle Assembly	5-9
6-1	Steering Column Assembly	6-2
6-2	Brake Valve Assembly	6-4
6-3	Accumulator Assembly	6-6
6-4	Accumulator Charge Valve Assembly	6-8
6-5	Brake Low-Pressure Switch	6-10
7-1	Hydraulic Tank Assembly	7-2
7-2	Hydraulic Tank Assembly	7-4
7-3	Transmission and Pump Assembly	7-6
7-4	High-Pressure Filter/Steering Valve Assembly	7-9
7-5	Distribution Manifold Assembly	7-11
7-6	Isolation Manifold Assembly	7-14
7-7	Boom Manifold Assembly	7-17
7-8	1145 Operator Control Valve Assembly	7-19
7-9	1154 Operator Control Valve Assembly	7-22
7-10	1145 Front Handle Assembly	7-24
7-11	1154 Front Handle Assembly	7-26

Numerical List of Parts Breakdowns – Cont.

<u>Figure No.</u>	<u>Title</u>	<u>Page No.</u>
7-12	Sway Handle Assembly	7-28
7-13	Rear Handle Assembly	7-30
7-14	Boom Lift Cylinder Assembly	7-32
7-15	Boom Lift Cylinder Subassembly	7-34
7-16	1145 Extend Cylinder Assembly	7-36
7-17	1154 Extend Cylinder Assembly	7-38
7-18	1145 Extend Cylinder Housing Assembly	7-40
7-19	1154 Extend Cylinder Housing Assembly	7-42
7-20	Extend Cylinder Support Assembly	7-44
7-21	Extend Cylinder Pin Assembly	7-46
7-22	1145 Carriage Tilt Cylinder Assembly	7-48
7-23	1154 Carriage Tilt Cylinder Assembly	7-50
7-24	1145 Tilt Cylinder Subassembly	7-52
7-25	1154 Tilt Cylinder Subassembly	7-54
7-26	Rotate Cylinder Assembly	7-56
7-27	Rotate Cylinder Subassembly	7-58
7-28	Front Axle Cylinder Assembly	7-60
7-29	Rear Axle Cylinder Assembly	7-62
7-30	Rear Axle Lock Manifold Assembly	7-64
7-31	Axle Cylinder Subassembly	7-66
7-32	1145 Boom Hose Kit	7-68
7-33	1154 Boom Hose Kit	7-70
7-34	1145 Chassis Hose Kit	7-72
7-35	1154 Chassis Hose Kit	7-76
8-1	Electrical Assembly	8-2
8-2	Electrical Center Assembly	8-7
8-3	Terminal Strip Assembly	8-9
8-4	Terminal Strip Assembly	8-11
8-5	Engine Relay Assembly	8-13
9-1	1145 Boom Assembly	9-2
9-2	1154 Boom Assembly	9-7
9-3	1145 Outer Boom Assembly	9-12
9-4	1154 Outer Boom Assembly	9-16
9-5	1145 Mid Boom Assembly	9-20
9-6	1154 Mid Boom Assembly	9-26

Numerical List of Parts Breakdowns – Cont.

<u>Figure No.</u>	<u>Title</u>	<u>Page No.</u>
9-7	1145 Inner Boom Assembly	9-32
9-8	1154 Inner Boom Assembly	9-35
9-9	1145 Inner Boom Subassembly	9-38
9-10	1154 Inner Boom Subassembly	9-41
9-11	1145 Inner Boom Subassembly	9-44
9-12	1154 Inner Boom Subassembly	9-46
9-13	Adapter Assembly	9-48
9-14	Slide Block Assembly	9-50
9-15	Outer Boom Roller Assembly	9-52
9-16	Mid Boom Roller Assembly	9-54
9-17	Roller Assembly	9-56
9-18	Roller Assembly	9-58
9-19	Chain Sheave Assembly	9-60
9-20	Chain Sheave Assembly	9-62
9-21	Belleville Spring Stack	9-64
9-22	Tube Clamp Assembly No. 2	9-66
9-23	Hose Clamp Assembly	9-68
10-1	1145 Cab Assembly	10-2
10-2	1154 Cab Assembly	10-9
10-3	Front Control Console Assembly	10-16
10-4	Front Control Panel Assembly	10-19
10-5	Control Enclosure Subassembly	10-21
10-6	1145 Side Control Console Assembly	10-24
10-7	1154 Side Control Console Assembly	10-28
10-8	Side Console Cover Assembly	10-32
10-9	Side Console Subassembly	10-34
10-10	Handle Boot Assembly	10-36
10-11	Accelerator Pedal Assembly	10-38
10-12	Front Cover Assembly	10-40
10-13	Engine Cover Assembly	10-42
10-14	Radiator Cover Assembly	10-46
10-15	Battery Cover Assembly	10-48
10-16	Radiator and Battery Cover Assembly	10-50
10-17	Rear Light Assembly	10-52
10-18	Radiator Shroud Assembly	10-54

Numerical List of Parts Breakdowns – Cont.

<u>Figure No.</u>	<u>Title</u>	<u>Page No.</u>
10-19	Filler Plate Assembly	10-56
10-20	Console Roller Assembly	10-58
11-1	Standard Carriage Assembly.....	11-2
11-2	Rotate Carriage Assembly.....	11-4
11-3	Carriage Post Assembly	11-6
11-4	Carriage Pin Assembly	11-8

THIS PAGE INTENTIONALLY LEFT BLANK

Section 1

General Information

Table 1-1. Abbreviations & Acronyms

<u>Term</u>	<u>Meaning</u>
A	Amperes
ASTM	American Society for Testing and Materials
AWG	American Wire Gauge
BHC	Button head cap
BKDN	Breakdown
DIA	Diameter
DPDT	Double-pole, double-throw
FSHC	Flat socket head cap
FTG	Fittings
HHC	Hex head cap
ID	Inside diameter
LG	Long
MM	Millimeter
NHA	Next higher assembly
NPT	National pipe thread
OD	Outside diameter
OHM	Oval head machine
PHM	Pan head machine
PWH	Pan washer head
QD	Quick-Disconnect
REF	Reference
REG	Regular
SAE	Society of Automotive Engineers
SBHC	Socket button head cap
SHC	Socket head cap
SHS	Socket head shoulder

<u>Term</u>	<u>Meaning</u>
SPDT	Single-throw, double-pole
SPST	Single-pole, single-throw
STR	Straight
THD	Thread
UNC	Unified National Coarse
UNF	Unified National Fine
V	Volts

Section 2

Chassis

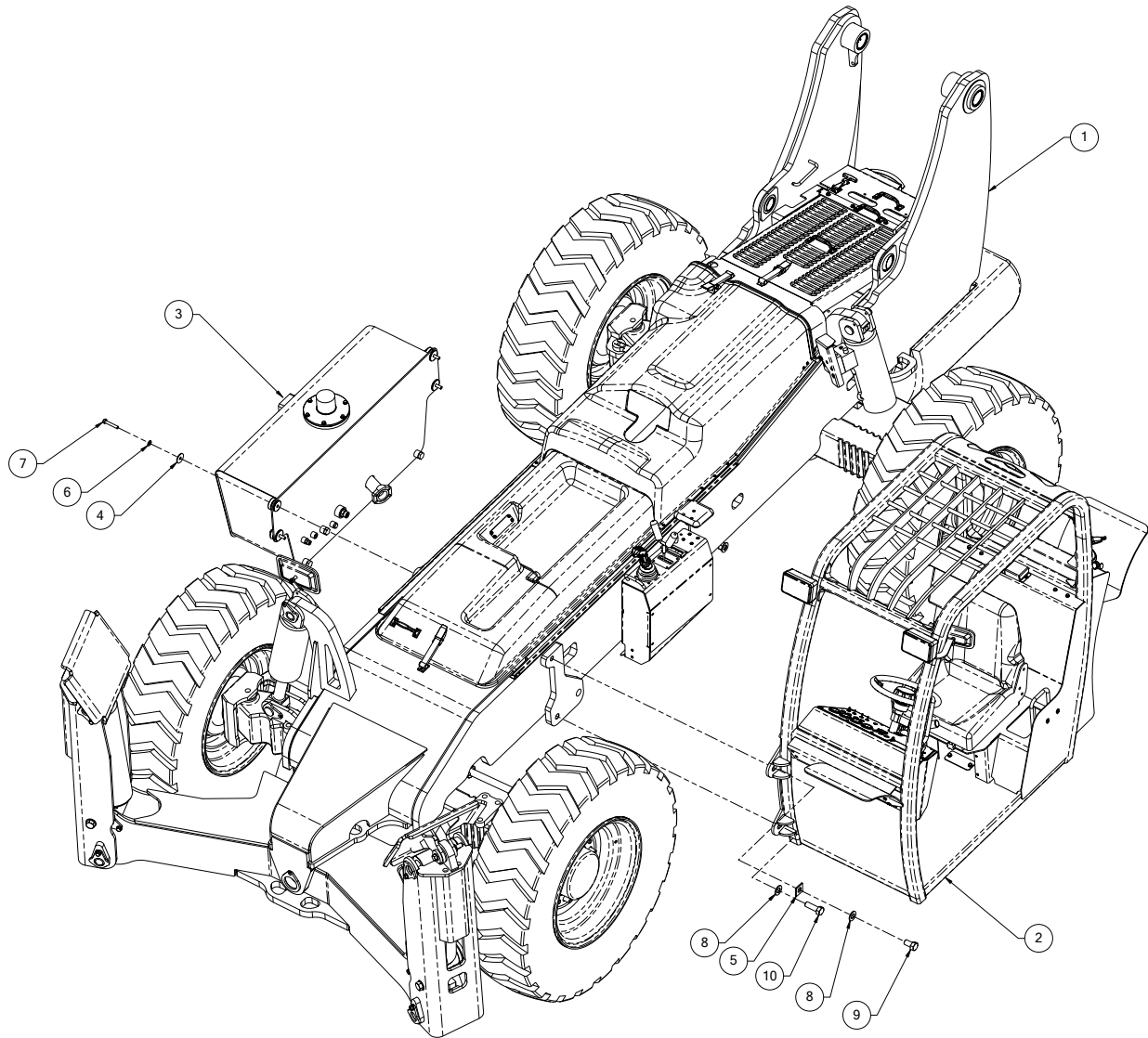


Figure 2-1. 1145 Basic Assembly

Table 2-1. 1145 Basic Assembly

Figure & Item No.	Part No.	Description	Quantity	Use On
–	25701-000	1145 Basic assembly	–	–
2-1-1	25702-000	Chassis assembly (covers)	1	–
2-1-2	25860-000	Cab assembly	1	–
2-1-3	26641-001	Hydraulic tank assembly	1	–
2-1-4	25383-000	Pin retainer plate	4	–
2-1-5	11011-016	Washer 1" ID square	2	–
2-1-6	11001-008	Washer 1/2" SAE flat	4	–
2-1-7	10004-024	Screw 1/2"-13UNC HHC x 3"	4	–
2-1-8	11001-016	Washer 1" dia SAE flat	6	–
2-1-9	10029-014	Screw 1"-14UNF HHC x 1-3/4"	2	–
2-1-10	10029-024	Screw 1"-14UNF HHC x 3"	2	–
2-1-11	10901-016	Nut 1"-14UNF reg hex	2	–

Refer to Section 1 for the definition of acronyms and abbreviations used in the Description Column.