

XZJ5372JQZ50K

XZJ5393JQZ50K

XZJ5394JQZ50K

XZJ5407JQZ50K

XZJ5408JQZ50K

( **QY50K** )

**TRUCK CRANE**

OPERATION AND MAINTENANCE MANUAL



XUZHOU HEAVY MACHINERY CO. , LTD.

XUZHOU CONSTRUCTION MACHINERY GROUP CO. , LTD. CHINA

## PREFACE

Thank you for selecting QY50K Truck Crane designed and made by Xuzhou Heavy Machinery Co., Ltd. XCMG.

This manual describes the correct operation, inspection and adjustment for QY50K Truck Crane. In order to give full rein to the crane high performance, please read, understand and use the operating instructions in this manual to ensure safety and high efficiency work for a long time. Moreover, this manual contains the information about key parts and system functions for reference of optional parts.

Only the trained and qualified personnel can work on this crane. Pay attention to periodic inspections of crane safety devices and don't use reluctantly the devices with any defects and abnormalities. What you should always keep in mind is ***“SAFETY IS THE FIRST PRIORITY”***.

This manual does not cover the operation and maintenance of the carrier, which are given in the operation manual for the carrier.

The Vehicle Identification Number (VIN) is marked on the nameplate out side operator's cab.

The product execution standard: Q/320301JAF35—2004.

We reserve the right to modify the design without notice for improvement.

XUZHOU HEAVY MACHINERY WORKS, XCMG

Add: No.165 Tongshan Road, Xuzhou, Jiangsu Province, P.R. China

Tel: ++86-(0)516-87888579

December 2004

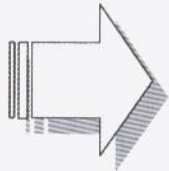
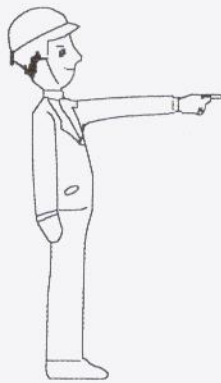


## CONTENTS

<b>1. APPLICATION AND FEATURES</b> .....	1
<b>2. TECHNICAL PERFORMANCE AND SPECIFICATIONS</b> .....	3
2.1 CRANE OUTLINE AND SPECIFICATIONS .....	4
2.2 MAIN PARTS STRUCTURE AND SPECIFICATIONS .....	18
<b>3. PREPARATION FOR LIFTING OPERATION</b> .....	21
<b>4. CRANE OPERATION</b> .....	23
4.1 ELECTRICAL SYSTEM .....	24
4.2 HYDRAULIC SYSTEM .....	37
4.3 STARTING ENGINE AND OPERATING PTO .....	43
4.4 OPERATING OUTRIGGERS .....	45
4.5 ACCELERATION .....	48
4.6 OPERATING WINCHES .....	49
4.7 BOOM TELESCOPING OPERATION .....	49
4.8 BOOM ELEVATING OPERATION .....	50
4.9 SWING OPERATION .....	51
4.10 INDICATION PLATES .....	51
<b>5. ACCESSORIES</b> .....	53
5.1 JIB .....	54
5.2 SLEWING RING .....	62
5.3 MAIN AND AUXILIARY HOOK BLOCKS .....	63
<b>6. RE—REEVING WINCH ROPE</b> .....	65
<b>7. SAFETY DEVICES</b> .....	69
7.1 LOAD MOMENT LIMITER (LML) .....	70
7.2 ROPE-END LIMITER .....	70
7.3 SYSTEM PRESSURE SWITCH .....	71
7.4 HYDRAULIC SAFETY VALVE .....	71
7.5 HYDRAULIC OIL FILTER BLOCKED WARNING LAMP .....	71
<b>8. GENERAL CAUTIONS IN OPERATION</b> .....	73
8.1 CAUTIONS .....	74



8.2 CAUTIONS IN HANDLING WINCH ROPE .....	83
8.3 ROPE ADJUSTMENT .....	84
<b>9. LUBRICATING OIL</b> .....	<b>87</b>
9.1 HYDRAULIC OIL .....	88
9.2 GEAR OIL .....	89
9.3 GREASE .....	90
9.4 HYDROSTATIC PRESSURE OIL .....	90
<b>10. COMMON TROUBLES AND TROUBLESHOOTING</b> .....	<b>91</b>
10.1 TROUBLES AND TROUBLESHOOTING .....	92
10.2 REPLACING WIRE ROPES .....	97
10.3 RETURN FILTER .....	101
10.4 LINE FILTERS .....	102
<b>11. PERIODIC INSPECTIONS</b> .....	<b>103</b>
<b>12. RAILROAD TRANSPORTATION</b> .....	<b>110</b>
<b>13. APPENDIX</b> .....	<b>113</b>
13.1 MAIN PARTS LIST .....	114
13.2 EASY WEAR PARTS LIST .....	115
13.3 SPARE PARTS LIST .....	117
<b>14. PACKING LISTS</b> .....	<b>119</b>



1. APPLICATION AND FEATURES

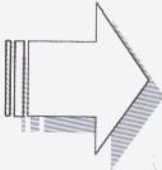
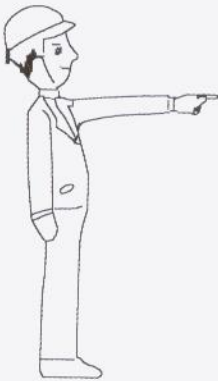




QY50K is suitable for lifting job and installation work in factories, mines, harbors, warehouse, seaport and construction sites, etc.

The features of the machine:

1. Fully hydraulic drive with infinitive speed variation in respective mechanisms, smooth of work and easy and for operation.
2. Same type of main and auxiliary winches, winch drum with integrated planetary reduction, supply oil by single pump or double pumps with variable displacement motor to get low speed for a heavy load and high speed for a light load, therefore it has high working efficiency.
3. Controllable free-swing mechanism for swing operation. The swing system uses planetary gear reducer and constant closed brake to drive internal tooth-engaged single-row slewing ring by constant-displacement motor. A buffer valve is fitted in the hydraulic system for smooth swing and stable fine motion control.
4. Complete safety devices such as load moment indicator (LMI), hoist limit switch, outrigger lock-pin, level gauge, and with illuminators and lamps for night operation.
5. Ergonomically designed cab, spacious and bright, comfortable and safe, equipped with adjustable seat, and fan and heater fitted for option.
6. Accessories available for customer selection such as jib, auxiliary winch, single top (boom tip sheave), and heater in operator's cab (optional).
7. Lower center of gravity, good stability and maneuverability, high travel speed, suitable for rapid work-site transfer.



**2. TECHNICAL PERFORMANCE  
AND SPECIFICATIONS**





## 2.1 Crane Outline and Specifications

- (1). QY50K Truck Crane Outline (Fig. 2-1 for XZJ5372JQZ50K and XZJ5393JQZ50K);  
(Fig. 2-1a for XZJ5394JQZ50K);  
(Fig. 2-1b for XZJ5407JQZ50K and XZJ5408JQZ50K).
- (2). Technical Specifications (Table 2-1, Table 2-2)
- (3). Total Rated Lifting Load For Boom (Table 2-3)
- (4). Total Rated Lifting Load For Jib (Table 2-4)
- (5). Total Rated Lifting Load For Single Top (Table 2-5)
- (6). Crane Lifting Height Curves (Fig.2-2)
- (7). Crane Working Area (Fig.2-3)



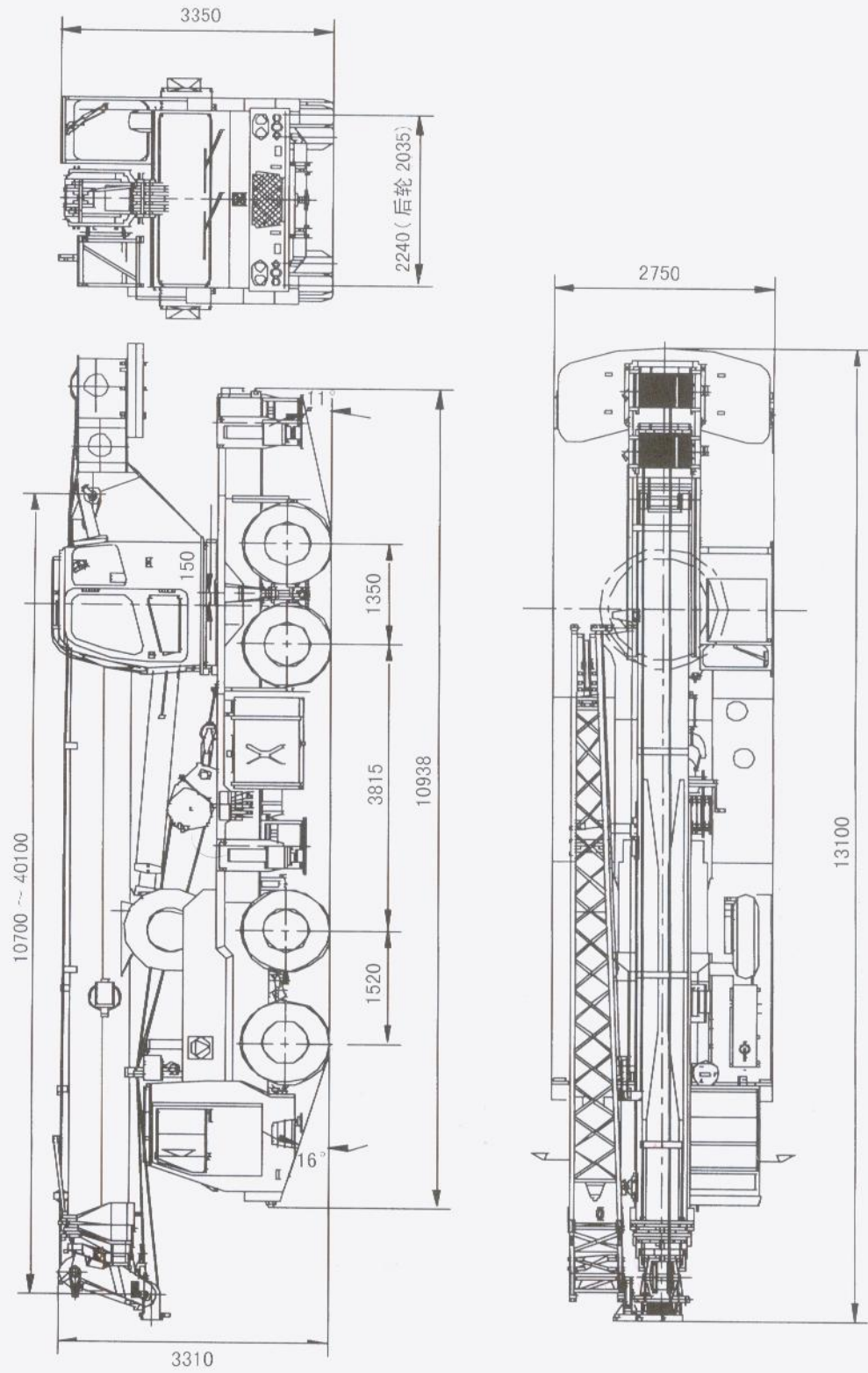


Fig. 2-1 QY50K Truck Crane Outline

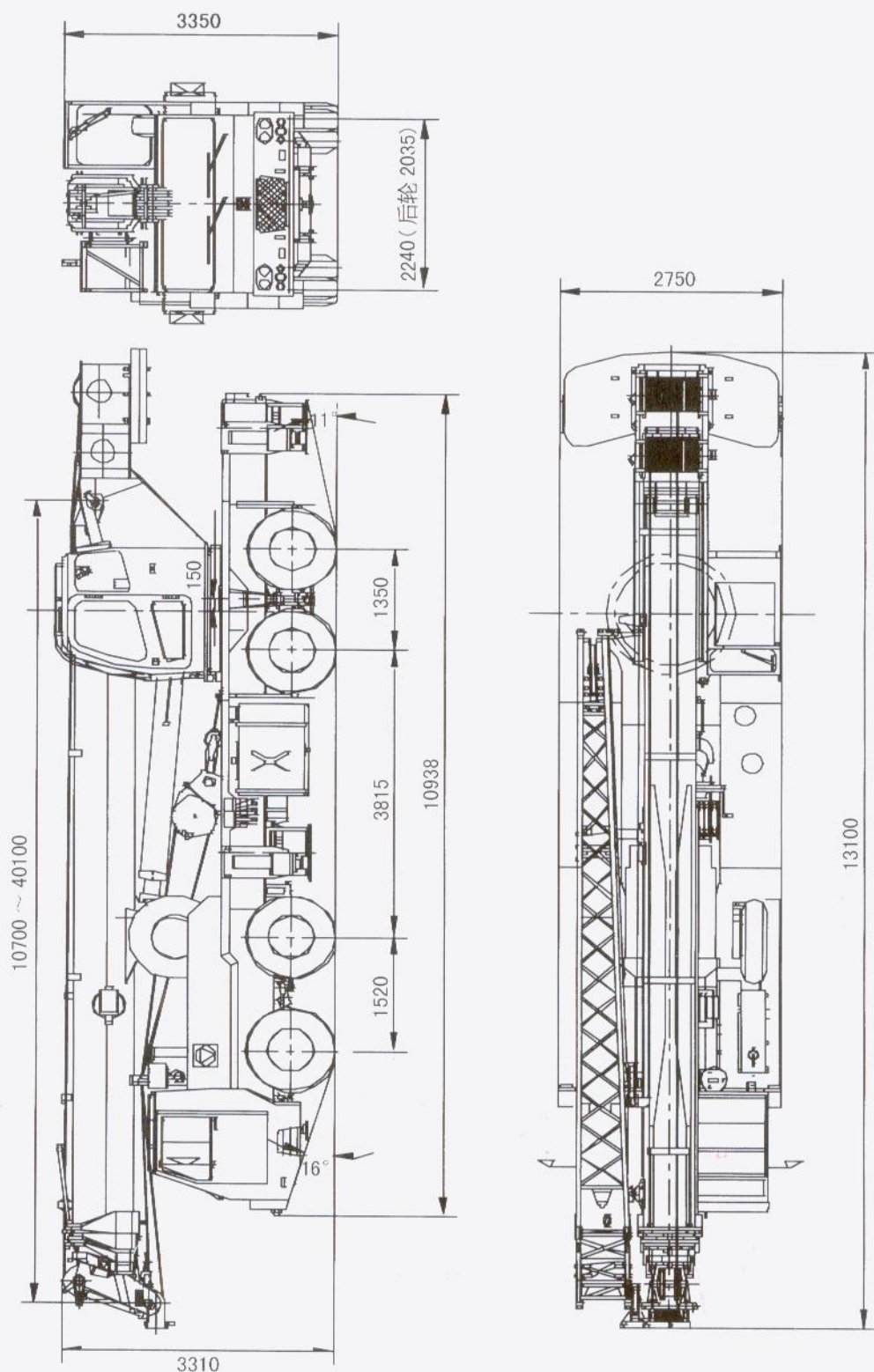


Fig. 2-1a QY50K Truck Crane Outline (for XZJ5394JQZ50K)