

PARTS CATALOG

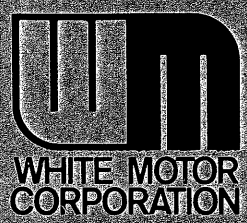
MR-2165B



SERIAL NUMBERS
GASOLINE AND L.P. GAS

- WC30-35000001
- WC35-36700001
- WC40-35100001
- WC45-36800001
- WC50-35200001
- WC55-36900001
- WC60-35300001

WC 30 THRU 60 FORK LIFT TRUCKS



White Materials Handling Company

A SUBSIDIARY OF WHITE MOTOR CORPORATION

HOPKINS, MINNESOTA 55343

Ref. No.	Part No.	DESCRIPTION	No. Pcs.
	10A16817	Coil-ignition (Delco-Remy).....	1
	20-7000680	Spark Plug-gas & LP-gas, (Champ. D-16) (8 per pkg.).....	4
	35P1449	Point Set-distributor, (Prestolite).....	1
	35P1450	Condenser-distributor, (Prestolite).....	1
	35P1772	Rotor-distributor, (Prestolite).....	1
OIL FILTERS AND AIR CLEANER FILTERS			
	10P1873	Filter-air cleaner, regular.....	1
	35A5533	Oil Filter-engine and transmission.....	2
	35P1497	Element-transmission sump filter.....	1
	20-7300768	Filter-air cleaner (cyclopac), optional (35P1601).....	1
	10P2704	Cleaning Compound-filter element, 4 pound box.....	-
FAN BELTS AND THERMOSTATS			
	35A10015	Belt-transmission pump drive, 1/2" x 31" O.C.	1
	10A12727	Belt-fan, all, and water pump drive, 49" O.C.	1
	35P2239	Thermostat-engine, 170°.....	1
	20-7300025	Thermostat-engine, 180°.....	1
ENGINE GASKET SETS, PISTONS AND PISTON RINGS			
	35R41	Gasket Set-valve grinding.....	1
	35R119	Gasket Set-front end, engine overhaul.....	1
	35R120	Gasket Set-engine oil pan.....	1
	20-7000118	*Gasket Set-carburetor, gasoline, 35A5135.....	1
	35P776	*Repair Kit-carburetor, gasoline, 35A5135.....	1
		*Note: Used on Models 30-50 w/Engine Spec. 8114 & 8168	
	35P2181	**Gasket Set-carburetor, gasoline, 35A9148 & 20-3003850.....	1
	20-7300545	**Repair Kit-carburetor, gasoline, 35A9148 & 20-3003850.....	1
	20-7301270	**Repair Kit-carb., gasoline, low emission, 20-3003902.....	1
		**Note: Used on Models 30-50 w/Eng. Spec. 8166 & Models 55-60	
	35P1095	Repair Kit-L.P. Gas vaporizer.....	1
	35P1096	Repair Kit-L.P. Gas regulator.....	1
	20-7300311	Repair Kit-L.P. carb. (Century), for 20-3004156.....	1
	20-7300008	Piston, w/pin and retainer, (repl. 35P2639 in sets).....	4
	35P1064	+Rings-pistons, complete rering set, std.	1
		+Note: Eng. Spec. 8114 & 8130 to Serial No. 85926 Inc.	
	20-7300011	++Rings-pistons, complete rering set, std.	1
		++Note: Eng. Spec. 8114 & 8130 Serial No. 85927 and after	
		++Note: Engines w/Eng. Spec. 8166 & 8168	
KITS FOR HYDRAULIC PUMP, BRAKE CYLINDERS AND TRANS.			
	10R1193	Kit-seals and gaskets for RB Webster pumps.....	1
	20-7380071	Kit-seals and gaskets, for RE Webster pumps.....	1
	20-7301946	Kit-seals and gaskets, for 1R & 3R Webster pumps.....	1
	35P1046	Kit-master cylinder 35A8058, 7/8", for Models 30-50.....	1
	35P922	Kit-master cylinder, 35A11330, 1" for Models 55-60.....	1
	35P2200	Kit-seals, brake cylinders, 35P2198.....	2
	35R145	Kit-seals and gaskets, trans. and diff. overhaul.....	1
KITS FOR TILT CYLINDERS AND HYDRALIZERS			
	35R32	Repair Kit - tilt cylinder (Cascade).....	2
	20-7380008	Repair Kit - tilt cylinder (Cessna).....	2
	20-7380034	Repair Kit - hydralizer with bolted on piston head.....	2
	20-7380062	Repair Kit - hydralizer w/snap ring retained piston head.....	2

PARTS GROUP INDEX

Page	Page
Accumulator.....D-4	Ignition Lock Vacuum Switch.....C-8
Alternator.....F-2	Ignition System.....F-2
Air Cleaner.....E-2,E-3	Instrument Panel.....C-5
Auxiliary Valves.....D-13,D-14	
Battery.....C-10	Lamps.....C-11
Battery Box.....C-10	LP-Gas Equipment.....E-7 thru E-13
Brakes.....A-23 thru A-24	Master Cylinder.....A-18,A-19
Brake Linkage.....A-16 thru A-18	Muffler.....F-5
Cables for Battery.....C-10	Oil-Transmission and Hydraulic.....G-3
Camshaft.....F-12	Oil Filter, Engine.....F-13
Carburetor, Gasoline Engine.....E-5,E-6	Oil Filter, Transmission.....A-20
Carburetor, LP-Gas Engine.....E-11,E-12	Oil Pump, Engine.....F-13
Choke Control.....C-8	Overhead Guard.....C-3
Clutch.....A-11	Oxy Catalyst Muffler.....F-5
Clutch Pedal and Linkage.....A-16 thru A-18	
Coil, Ignition.....F-2	Paint.....G-2
Connecting Rod.....F-11	Pistons and Rings.....F-11
Control Valve, Lift and Tilt... D-13,D-15	Positive Crankcase Breather.....F-3
Cooling System.....F-7	Power Steering Booster, 55-60.....B-11
Counterweight.....C-3	PTX Muffler.....F-5
Crankcase.....F-8	
Crankshaft.....F-10	Quick Disconnect Coupling, Hyd.D-4
Cylinder Head.....F-8	Quick Disconnect Coupling, LP-Gas.....E-9
Dead Man Seat.....C-7	Radiator.....F-7
Decals.....G-2	Rings for Pistons.....F-11
Differential and Cage.....A-7,A-8	
Distributor.....F-2	Seats.....C-6
Drive Axle and Wheels.....A-9	Spark Plug.....F-2
Drag Link, Steering, 30-50.....B-12	Starting Motor.....F-2
Engine Oil.....G-3	Steering Cylinder, 55-60.....B-11
Fan.....F-7	Steering Gear, 30-50.....B-3 thru B-6
Flywheel and Housing.....F-9,F-10	Steering Linkage.....B-12
Foot Accelerator.....C-9	Steering Motor, 55-60.....B-7 thru B-10
Frame.....C-2	Steering Wheel.....B-2
Fuel Filler.....E-4	
Fuel Pump.....E-4	Tilt Cylinder.....D-16,D-17
Gas Manifold.....F-9	Thermostat.....F-7
Gasket Sets.....A-6	Transmission.....A-12,A-13
Generator, UL GS Equipped.....F-4	Transmission Case.....A-10
Governor.....F-14 thru F-15	Transmission Controls.....A-14 thru A-18
Hood.....C-4	Transmission Oil.....G-3
Horn.....C-8	Transmission Control Linkage...A-16 thru A-19
Horn Button.....B-2	Valves.....F-12
Hydra-Lizer and Wheels.....B-13 thru B-15	Voltage Regulator.....F-2,F-4
Hydraulic Oil Lines.....D-2,D-3	Water Pump.....F-6
Hydraulic Pumps.....D-5 thru D-12	Wheels, Drive.....A-9
	Wheels, Steering.....B-15
	Wiring Harness.....C-10,F-4
	NUMERICAL INDEX.....G-4 thru G-15

F O R E W O R D

This catalog contains a complete list of parts for the lift truck. To assist in determining the part numbers and descriptions, the parts in this catalog are grouped according to their location on the lift truck. Reference numbers only are shown in each illustration. These numbers correspond to those in the reference number column in the list of parts which follows each "exploded view".

TYPICAL PARTS ARE SHOWN, AND MAY NOT ALWAYS BE IDENTICAL WITH CURRENT PARTS. REFER TO THE TEXT. "RIGHT OR LEFT" IS DETERMINED BY FACING TOWARD THE UPRIGHT FROM THE LIFT TRUCK SEAT.

To further assist in locating repair parts, the part numbers are arranged in numerical sequence and indexed at the rear of this catalog.

Component parts of assemblies are listed following the assembly itself and are identified as being part of the assembly by this notation following the description:

Consists of the following ... parts or Includes the following ... parts:

Part numbers only make up an assembly. Hardware items are not to be included.

Parts such as standard bolts, nuts, screws, washers, etc., are listed under the respective individual parts with which they are used. The quantity for many of the shims listed is shown as A.R. (as required). The correct amount of shims should be determined in order to get the proper clearance. Bolts and nuts listed are standard Grade 5, special grades will be shown in text. Order hardware thru Standard Fastner Program or purchase locally.

Occasionally new part numbers replace old numbers in the Part No. column. In those cases where the new number substitutes for the old number, the old number will be enclosed in parenthesis and it will appear at the end of the text in the description column.

When in need of repair parts, order from your local dealer. All parts orders should plainly specify your name, post office address, and whether shipment is to go by parcel post, express, or freight. Claims of shortage or breakage should be made to the transportation company on receipt of goods.

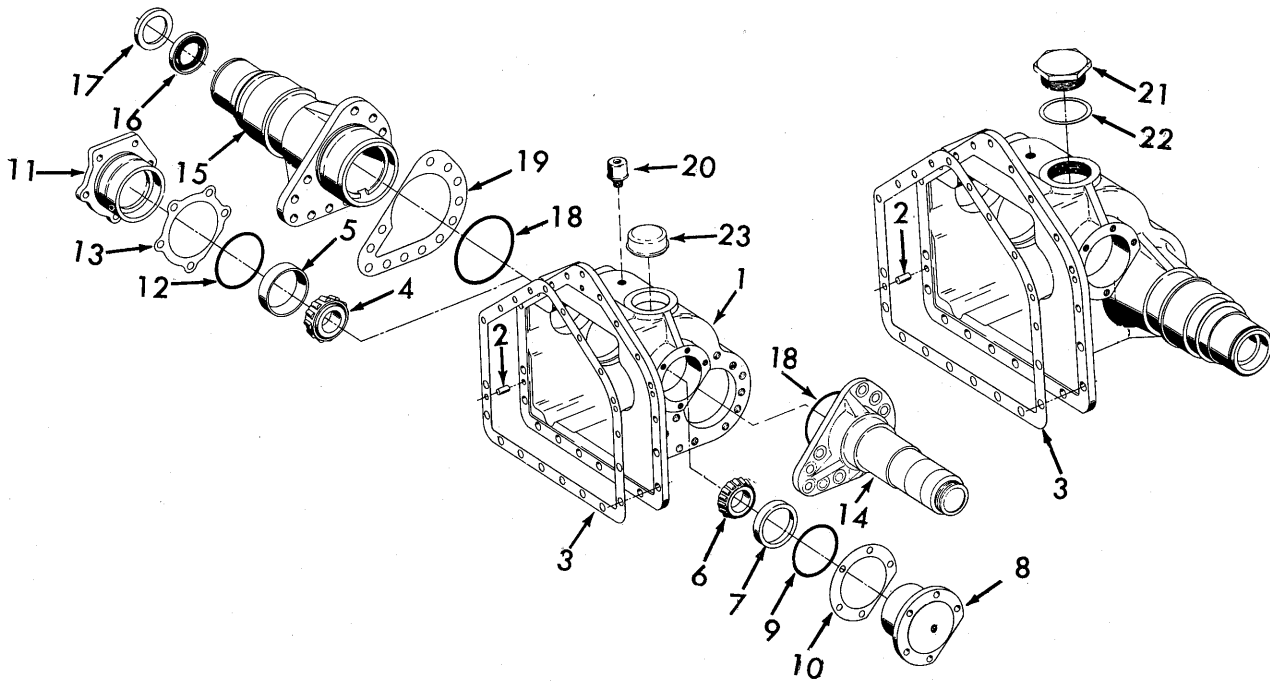
Before returning repair parts to the factory or parts depot, it is necessary to secure written permission from the Company authorizing the return of such parts. In the returning of repair parts be sure the package is tagged with your name and address. Prepay transportation charges.

It is the policy of the Company to improve its products whenever it is possible and practical to do so. We reserve the right to make changes or add improvements in the design or construction of parts at any time without incurring the obligation to install such changes on products previously delivered.

GROUPS

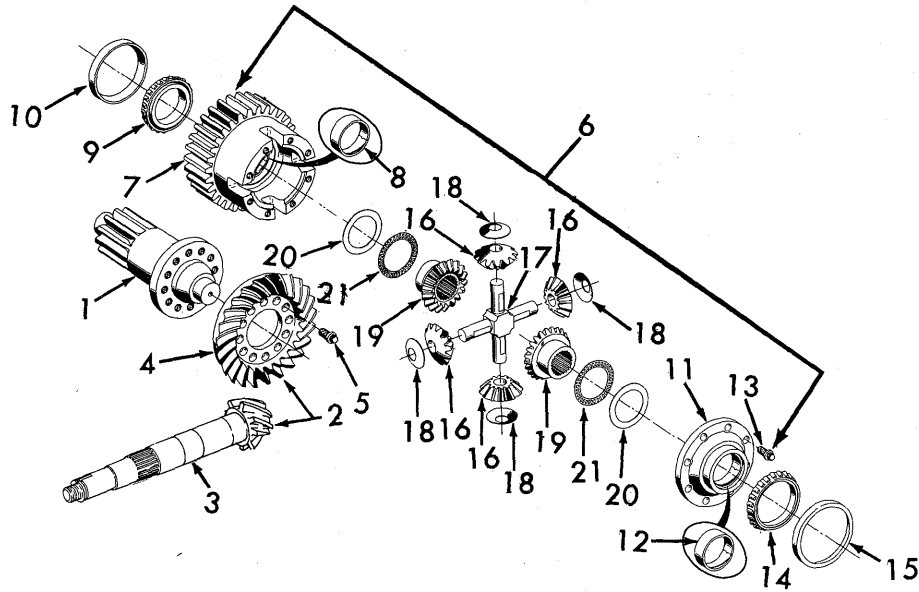
- A - Drive Wheels, Differential, Transmission and Brakes
- B - Steering, Hydralizer and Steer Wheels
- C - Frame, Driver Compartment and Wiring Harness
- D - Hydraulics
- E - Carburation and LP-Gas Systems
- F - Engine and Accessories
- G - Decals, Paint, Engine Oil, Hydraulic Oil and Index

Ref. No.	Part No.	DESCRIPTION	No. Pcs.
		GASKET AND REPAIR KITS	
	35R41	Kit - gasket, engine valve grind..... Consists of the following parts:	1
	35P779	Cylinder Head Gasket.....	1
	35P790	Valve cover Gasket.....	1
	9102S	Gasket - cover stud.....	2
	35P793	Manifold Gasket.....	1
	20-7300027	Kit-water pump repair..... Consists of the following parts:	1
	35P1961	Seal - water pump.....	1
	35P2236	Shaft - water pump, with bearing.....	1
	15P171	Ring - seal bearing.....	1
	35P1962	Retainer - seal.....	1
	15P173	Gasket - water pump cover.....	1
	35P1960	Impeller - water pump.....	1
	35R145	Kit - gasket, transmission overhaul..... Consists of the following 1-20-3008957 Gasket (35A317) 1-50A961 "O" Ring 1-35A5192 Shim 1-50A1763 "O" Ring 3-35A9861 Shim 6-50A4263 Ball-1/4" 4-35A9907 Seal 2-50A5228 Plug 1-35A9908 Seal 1-50A5229 Plug 6-35A9956 Spring 6-20-3000004 Spring 1-35A10134 Gasket 2-35A12485 Seal 1-35A10947 Gasket 1-50A1745 Lock Washer 1-35P1498 Gasket 2-35A12617 Bearing (nylon)	1
	35P776	Kit - carburetor repair, gasoline for 35A5135 carb.	1
	20-7000118	Kit - gasket set, carburetor, gasoline, for 35A5135 carb. ..	1
	20-7300545	Kit - carburetor repair, gasoline, for 20-3003850 carb.	1
	35P2181	Kit - gasket set, carburetor, gasoline, for 20-3003850 Carb.	1
	35P1095	Kit - vaporizer repair, LP-Gas, for 35P1083 vaporizer.....	1
	35P1096	Kit - regulator repair, LP-Gas, for 35P1085 regulator.....	1
	35P1597	Kit - master cylinder repair, 7/8" for 35A8058 master cyl. .	1
	35P922	Kit - master cylinder repair, 1" for 35A11330 master cyl. ..	1
	35P2200	Kit - brake cylinder repair, for 35P2198 and 20-7300421 cyl.	2
	20-7380090	Kit-seals, hydralizer.....	2
	20-7380034	Kit - hydralizer repair, for hydralizers with bolted piston head.....	2
	20-7380062	Kit - hydralizer repair, used with piston head retained by snap ring.....	2
	35R32	Kit - tilt cylinder repair (Cascade).....	2
	20-7380008	Kit - tilt cylinder repair (Cessna).....	2



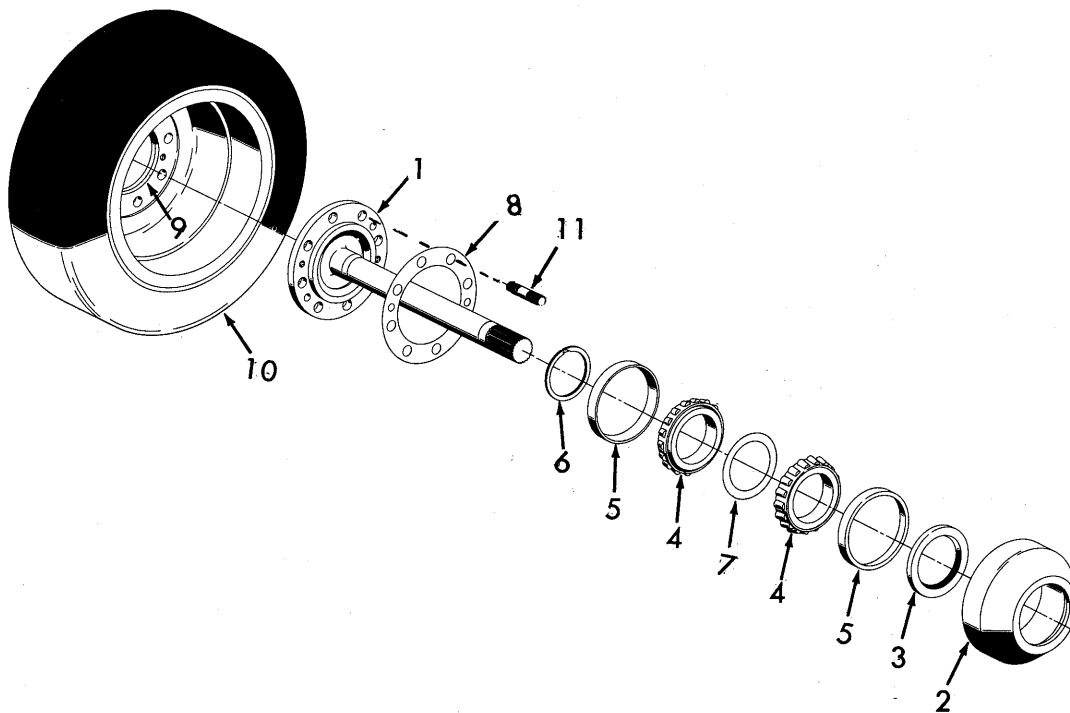
DIFFERENTIAL CAGE AND HOUSINGS

Ref. No.	Part No.	DESCRIPTION	No. Pcs.	Ref. No.	Part No.	DESCRIPTION	No. Pcs.
1	20-7370036	Case-Inc #2 (35B7816)	1		Bolt-Gr.8	*3/8-16x1-1/4	2
	50A1164	Screw-12pt.1/2x1-1/4	8		Bolt-Gr.5	+3/8-16x7/8	3
	50A1441	Screw-12pt.3/8x1-1/4	3		Bolt-Gr.5	+3/8-16x1-1/4	3
	50A5038	Stud, 3/8-16x1-3/4	9		20-3006586	+Spacer-shift brkt.7/16 L.	3
	Nut	3/8-16	9	13	35A8241	Shim-LH, .002	AR
	50A6022	Plug-hex, 3/4-14	1	13	35A8242	Shim-LH, .003	AR
2	10A11543	Pin-dowel, 3/8x3/4	2	13	35A8243	Shim-LH, .005	AR
3	20-3001592	Gasket-diff., .015	1	14	20-7370037	+Housing-RH, Inc.16-17	1
4	10A7059	Bearing-LH	1	15	35B8364	Housing-LH, Inc.16-17	1
5	EB5026	Cup-bearing-LH	1		50A1164	Screw-12pt. 1/2x1-1/4	22
6	10A7051	Bearing-RH	1	16	35A9511	Seal-housing	2
7	10A7052	Cup-bearing-RH	1	17	35A8493	Collar-seal ret.	2
8	35A9459	*Cap-bearing-RH	1	18	M333	O-Ring, 4-1/4 OD	1-2
8	20-3001143	+Cap-bearing-RH	1	19	35A5448	Shim-housing, .002	AR
9	50A1743	O-Ring, 3-3/16 OD	1	19	35A5447	Shim-housing, .003	AR
	Bolt-Gr.8	*3/8-16x1	5	19	35A5446	Shim-housing, .005	AR
	Bolt-Gr.5	+3/8-16x7/8	5	19	35A8711	Shim-housing, .020	AR
10	35A5442	Shim-cap RH, .002	AR	20	35A5891	Breather, 1/4	1
10	35A5441	Shim-cap RH, .003	AR	21	35A8251	*Plug, 2-1/2-16	1
10	35A5440	Shim-cap RH, .005	AR	22	35A8250	*Washer (copper)	1
11	35A9458	*Cap-bearing (35A7817)	1	23	35A558	+Plug, 2-11/16	1
11	20-3001144	+Cap-bearing-LH	1			*Note: On 2 pc.diff.	
12	50A1744	O-Ring, 3-7/16 OD	1			+Note: On 3 pc.diff.	
	Bolt Gr.8	*3/8-16x1	3				



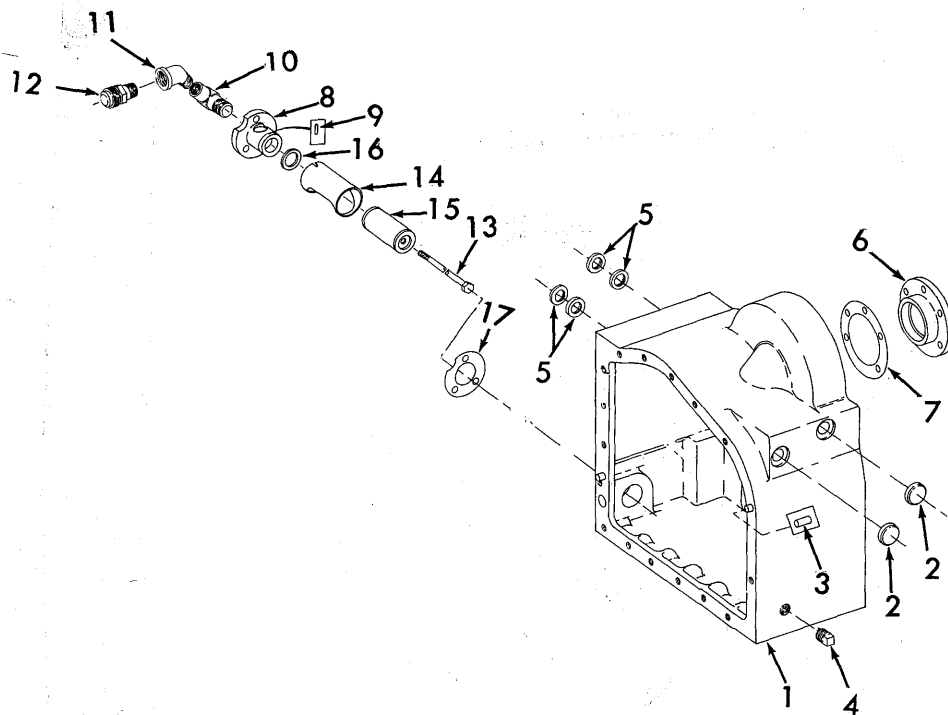
BULL PINION SHAFT AND DIFFERENTIAL CAGE

Ref. No.	Part No.	DESCRIPTION	No. Pcs.	Ref. No.	Part No.	DESCRIPTION	No. Pcs.
1	35A9485	Shaft-bull pinion, 12T.	1	11	36A7807	Cover-w/bush.RH	1
2	20-6007678	Ring Gear & Pinion (35B9818 Inter.) Inc. #3 & 4:	1	12	35A8492	*Bushing-ream to fit	1
3	35A9818	Pinion-8 teeth	1	13	35A12566	*Bolt-12pt.3/8x3/4	8
4	35A7819	Ring Gear-25T.	1	14	35A8235	Bearing-cage cover	1
5	20-3000435	Bolt-12pt.7/16x7/8	12	15	35A8236	Cup-cage cover	1
6	20-7380067	Cage-assy. (Inc. *)	1	16	35A9451	*Pinion-cage	4
7	20-6006350	*Cage-w/bush.30T.	1	17	35A7809	*Shaft-pinions	1
8	35A8492	*Bushing-ream to fit	1	18	20-3006635	*Washer-thrust (35A7813)	4
9	162687A	Bearing-cage LH	1	19	35A9452	*Gear-bevel, 18T.	2
10	162688A	Cup-cage LH	1	20	35A7814	*Race-brg.2-23/32	2
				21	35A7815	*Bearing-thrust	2



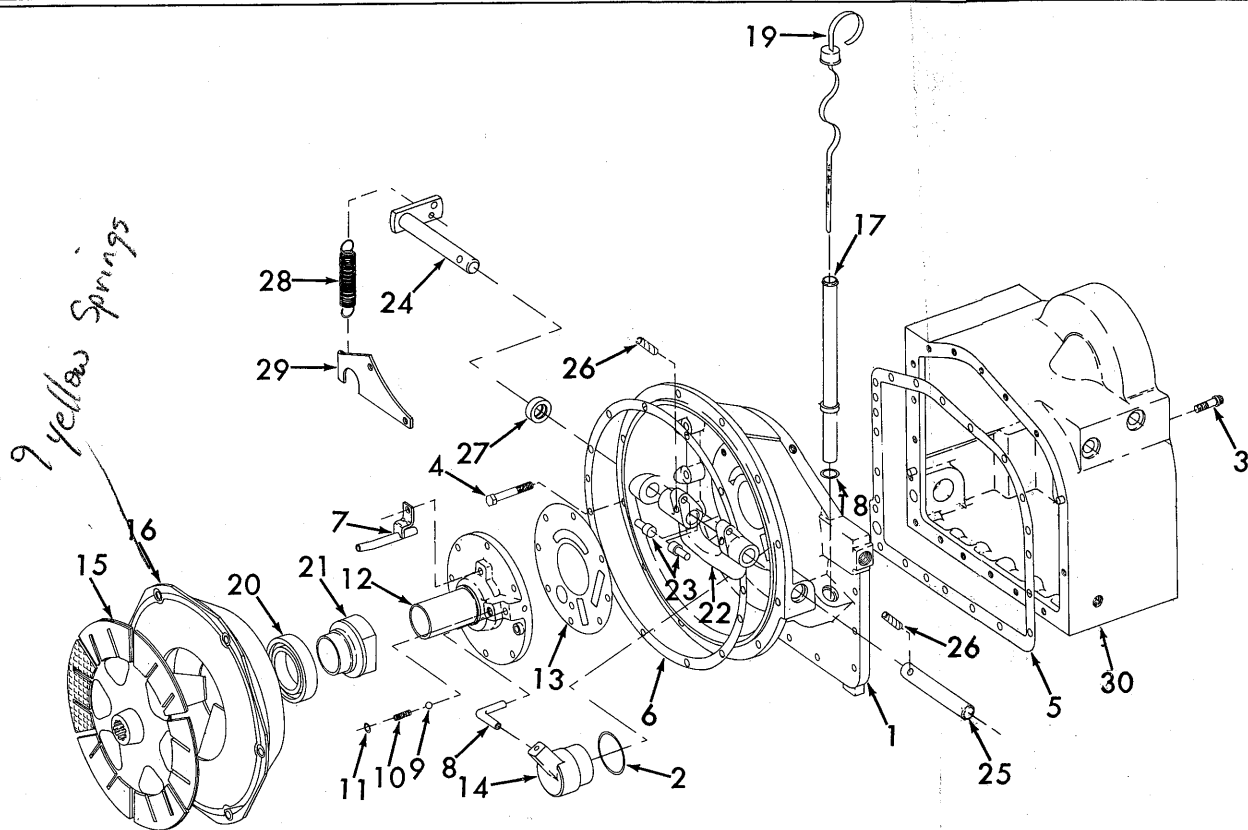
DRIVE AXLE, WHEEL AND BEARING HOUSING

Ref. No.	Part No.	DESCRIPTION	No. Pcs.	Ref. No.	Part No.	DESCRIPTION	No. Pcs.
1	35A8245	Shaft-axle, 17-3/16	2		20-6008140	Wheel-assy., 30-35	2
	50A5170	O-Ring-flange, 4-11/16	2		6x12-1/8x18	Inc. #9 and 10:	
2	35A8360	Housing-bearing	2	9	35A9522	Hub-drive, 30-35	2
	50A2746	Screw-flt. 3/8-16x1	4	10	20-3008140	Tire-cushion, 30-35	2
3	35A8629	Seal-housing	2		20-6008143	Wheel-assy., 40-45	2
4	35A7752	Bearing-housing	2		7x12-1/8x18	Inc. #9 and 10:	
5	155766A	Cup-bearing	4	9	35A9521	Hub-drive, 40-45	2
6	50A1740	Ring-brg.ret.	2	10	20-3008143	Tire-cushion, 40-45	2
7	35A7275	Shim-bearing.020	AR		20-6008146	Wheel-assy., 50	2
7	35A7276	Shim-bearing.022	AR		8x12-1/8x18	Inc. #9 and 10:	
7	35A7277	Shim-bearing.025	AR	9	35A9523	Hub-drive, 50	2
7	35A7278	Shim-bearing.028	AR	10	20-3008146	Tire-cushion, 50	2
7	35A7279	Shim-bearing.030	AR		20-6008149	Wheel-assy., 55-60	2
7	35A7280	Shim-bearing.032	AR		9x12-1/8x18	Inc. #9 and 10:	
7	35A7281	Shim-bearing.035	AR	9	35A9082	Hub-drive, 55-60	2
8	35A5436	Shim-housing.002	AR	10	20-3008149	Tire-cushion, 55-60	2
8	35A5435	Shim-housing.003	AR	11	20-3007309	Stud-wheel 9/16x27/16, GR8	16
8	35A5434	Shim-housing.020	AR		50A1096	Nut-hex (Gr.8) 9/16-12	16
					35A10626	Plug-wheel 3/4x1-1/2	2



TRANSMISSION CASE, SUMP FILTER AND FITTINGS

Ref. No.	Part No.	DESCRIPTION	No. Pcs.	Ref. No.	Part No.	DESCRIPTION	No. Pcs.
1	35B9870	Case-trans.,w/dowel pins 4-1-1/8 shifting openings	1	8	35P3010	Flange-sump fltr.Inc.#10	1
1	20-7370022	Case-trans.w/dowel pins, 3-1-1/8&1-1-1/4 openings	1		Bolt	5/16-18x1	3
2	50A5228	Plug-expansion,1-1/8	2	9	35P1502	Pin-flange	1
3	10A11543	Pin-dowel	2	10	35A11628	Elbow-flange,90°	1
4	35A3260	Plug-mag.,1/2-14	1	11	50A4591	Elbow-connector,45°	1
5	35A9907	*Seal-shifter shaft,1-1/8	4-2	12	50A5638	Connector-tube,3/4	1
5	35A12485	*Seal-shifter shaft,1-1/4	2	13	35A11630	Bolt-hex,1/4-20x7	1
6	35A9837	Housing-bearing,inpt.shft	1		50A5520	Washer-w/seal,1/4	1
	Bolt	5/16-18x1-1/4	5		Nut-lock	1/4	1
7	35A9861	*Shim-housing,.002	AR	14	35P1496	Tube-suction	1
7	35A9862	Shim-housing,.003	AR	15	35P1497	Element-filter	1
7	35A9863	Shim-housing,.010	AR	16	35P1498	*Gasket-element	1
				17	20-3008957	*Gasket-flange (35A317)	1
					35R145	*Kit-gaskets & seals Inc.parts with (*).	1



CLUTCH HOUSING, CLUTCH AND SHIFTING SHAFT

Ref. No.	Part No.	DESCRIPTION	No. Pcs.	Ref. No.	Part No.	DESCRIPTION	No. Pcs.
1	20-3000403	Housing-clutch(35A9831)	1		Bolt	5/16-18x1-1/4	1
2	50A961	*O-ring,brg.cap	1	13	35A10947	*Gasket-cover	1
	50A955	Plug-hex skt., 1/2	1	14	36A9856	Cap-brg.,output shaft	1
	Bolt	3/8-16x1-1/4	18	15	35P2873	Plate-clutch,w/lining	1
	Bolt	3/8-16x1-3/4	1	16	35P2874	Cover-clutch	1
	Bolt	3/8-16x2	2		Bolt	3/8-16x1	6
	Bolt	3/8-16x2-1/2	7	17	35A5906	Tube-filler & dipstick	1
3	50A1441	Bolt-12 pt.3/8x1-1/4	1	18	50A1763	*O-Ring-tube,7/8 O.D.	1
4	Bolt	3/8-16x2-3/4	1	19	35A5908	Dipstick-clutch oil	1
	Washer	Lock,3/8	30	20	10A21384	Bearing-throwout	1
	50A5229	*Plug-exp.,1-1/16	1	21	10A14328	Support-throwout brg.	1
	50A5943	Pin-spiral,3/16x5/8	1	22	35A10326	Yoke-clutch shifting	1
5	35A5192	*Gasket-hsg.to case	1	23	10A12584	Roller-shifting yoke	2
6	35A10134	*Gasket-hsg.to fly.hsg.	1	24	36A9890	Shaft-yoke,7/8,mdls30-50	1
7	36A9823	Tube-oil,w/support	1	24	36A11893	Shaft-yoke,.010 OS 30-50	1
8	35A9834	Tube-oil,brg.support,3/8	1	24	36A10826	Shaft-yoke,Models 55-60	1
9	50A4266	Ball-relief,3/8	1	25	35A9839	Shaft-yoke,7/8x5-3/4	1
10	35A376	Spring-relief,9c lxs31/32	1	26	10A23137	Pin-shafts,spol.3/8x1-1/2	2
	Washer	#10,9/32x1/2	1	27	35A9908	*Seal-throwout shaft	1
11	50A5645	Ring-snap	1	28	35A10831	Spring-throwout shaft	1
12	20-6000391	Cover-(36A9824&36A14599)	7	29	35A10830	Anchor-spring	1
	Bolt	5/16-18x1	1	30	-----	Case-transmission, P.A-10	1