

6316697727



PARTS CATALOG

NTA 855

VME

L190

L190B

THE FOLLOWING FILTERS CAN BE PURCHASED THRU VME PARTS
NORTH AMERICA:

FILTER

PART NUMBER

FUEL	12003653
LUBE	12000200
LUBE-BYPASS	11996228
WATER-FOR FLUSHING	12565210
WATER-FOR SERVICING	4099799



Cummins Engine Co., Inc.

New Parts Warranty Heavy Duty

COVERAGE

PRODUCTS WARRANTED

These warranties apply to New Parts marketed by Cummins for its engines (except those for A, B, and C series engines). They apply anywhere in the world where service is available through a Cummins distributor or full service dealer.*

BASE WARRANTY

The Base Warranty covers any failures of parts on or after March 31, 1986, which result, under normal use and service, from defects in workmanship or material (Warrantable Failures). The coverage on cylinder kits designated by Cummins as "Premium Plus" extends two years, 200,000 miles (321,870 kilometers) or 7,200 hours of operation, whichever occurs first, from the date of first installation. The coverage on other parts extends one year, 100,000 miles (160,935 kilometers) or 3,600 hours of operation, whichever occurs first, from the date of first installation.

EXTENDED MAJOR COMPONENTS WARRANTY

The Extended Major Components Warranty covers Warrantable Failures on or after March 31, 1986, of engine cylinder blocks, crankshafts, flangeless NT camshafts** and connecting rods (Covered Parts). Bushing and bearing failures are not included. This coverage begins with the expiration of the Base Warranty and ends three years, 300,000 miles (482,805 kilometers) or 10,800 hours of operation, whichever occurs first, from the date of first installation.

Both the Base Warranty and Extended Major Components Warranty apply to all Owners in the chain of distribution, and coverage continues to all subsequent Owners until the end of the respective periods of coverage.

CUMMINS RESPONSIBILITIES

DURING THE BASE WARRANTY

Cummins will pay for all parts and labor needed to repair the damage to the engine resulting from the Warrantable Failure. All labor costs will be paid in accordance with Cummins published Standard Repair Operation guidelines.

Cummins will pay for the lubricating oil, antifreeze, filter elements, and other maintenance items that are not reusable due to the Warrantable Failure.

Cummins will pay reasonable labor costs for engine removal and reinstallation when necessary to make the warranty repair.

When the parts are installed in a non-automotive engine, Cummins will pay reasonable travel expenses for mechanics to and from the engine site, or the repair dock in the case of a marine engine, including meals, mileage and lodging when it is necessary for mechanics to make on-site warranty repairs.

DURING THE EXTENDED MAJOR COMPONENTS WARRANTY

Cummins will pay for the Covered Part and for any Covered Part damaged by a Warrantable Failure of another Covered Part.

OWNER RESPONSIBILITIES

DURING THE BASE WARRANTY

Before expiration of the warranty, Owner must give notice to a Cummins distributor or full service dealer* of a failure considered to be warrantable and have the repair performed by such facility.

If the part was installed in an automotive engine, the Owner must deliver the engine to the repair location. If installed in a marine engine, Owner is responsible for the cost of towing the boat to a repair dock and for any associated docking and harbor charges.

Owner is responsible for the cost of lubricating oil, antifreeze, filter elements and other maintenance items replaced during warranty repairs except where such items are not reusable due to a Warrantable Failure.

DURING THE EXTENDED MAJOR COMPONENTS WARRANTY

Before expiration of the warranty, Owner must give notice to a Cummins distributor or full service dealer* of a failure considered to be warrantable and deliver the defective and damaged Covered Parts to such facility.

Owner is responsible for the cost of all parts needed for the repair except for the defective Covered Part and for any Covered Part damaged by a Warrantable Failure of another Covered Part.

Owner is responsible for the cost of all labor needed to repair the engine, including the labor to remove and reinstall the engine. When Cummins elects to repair a part instead of replacing it, Owner is not responsible for the labor needed to repair the part.

Owner is responsible for the cost of lubricating oil, antifreeze, filter elements and other maintenance items replaced during the repair.

DURING BOTH WARRANTIES

At the time when the parts are installed, Owner is responsible for the preparation of a written record containing the following: (1) the date of installation of the parts; (2) the engine serial number; (3) the engine miles, hours or kilometers of operation; (4) the parts installed, and (5) the location of the parts in the engine. The purpose of this record is to protect Owner's interests and support any claim for a Warrantable Failure.

Owner is responsible for the operation and maintenance of the engine as specified in Cummins Operation and Maintenance Manuals.

Owner is responsible for communication expenses, meals, lodging and similar costs incurred by Owner as a result of a Warrantable Failure. Owner is responsible for non-engine repairs and for "down time" expenses, cargo damage and all business costs and losses resulting from a Warrantable Failure. CUMMINS IS NOT RESPONSIBLE FOR INCIDENTAL OR CONSEQUENTIAL DAMAGES.

LIMITATIONS

Cummins is not responsible for failures resulting from Owner or Operator abuse or neglect, such as: operation without adequate coolant, fuel or lubricants; overfueling; overspeeding; lack of maintenance of lubricating, cooling or air intake systems; improper storage, starting, warm-up, run-in or shutdown practices. Cummins is also not responsible for failures caused by incorrect fuel, or by water, dirt or other contaminants in the fuel.

Cummins does not warrant parts supplied by Cummins which bear the name of another company. These parts are warranted by their manufacturers and not by Cummins. This category of parts includes, but is not limited to: hydraulic pumps, alternators, starters, fans, air conditioning compressors, clutches, steering pumps, transmissions, torque converters, marine gears, air cleaners, filters and non-Cummins air compressors, power steering pumps, and engine compression brakes.

Parts provided may be new Cummins, Cummins approved rebuilt parts, or repaired parts. Cummins is not responsible for failures resulting from the use of parts not approved by Cummins.

Before a claim for excessive oil consumption will be considered, Owner must submit adequate documentation to show that consumption exceeds Cummins published standards.

This warranty does not apply to parts furnished by Cummins at no charge to the Owner.

INVEST IN THE BEST

Product Identification Information

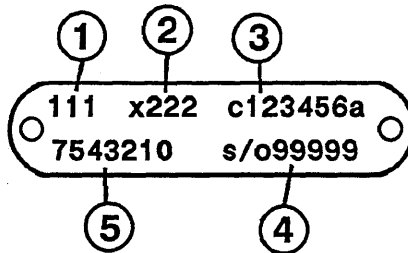
Data plates should be referred for parts identification.

1. ENGINE DATA PLATE

③	Engine No.	①				S.O. No.
②	Model	Ref. No.				
	Advertised	Engine	C.I.D.	Family	C.P.L.	④
	Conf. No.	Cert	Indent.			
	Date of mfg.	Warranty start date				
Manufactured by Cummins Engine Co.						

1. Shop order number
2. Model designation
3. Engine serial number
4. Control parts list

2. FUEL PUMP DATA PLATE



1. Control parts list number
2. Calibration code
3. Serial number
4. Top level number
5. Fuel pump assembly number

This catalog was compiled by Wanda Ferguson in Parts Communications.

Customer Service Information

This standard Parts Catalog contains parts information for the following Cummins Engine Model(s):

NTA-855

D093445CX02

CPL 1204

SO 38127

Certain basic engine components have been matched to give optimum performance to your engine. The part numbers listed in this catalog for these components are for a standard engine configuration. When ordering any of the Control Parts List (CPL) components listed below, please order by part description and engine serial number. Reference to the CPL number stamped on the engine data (name) plate will also help identify the proper service parts for your engine.

Control Parts List (CPL) Components

Camshaft
Cylinder Head
Injector

Page 65
Page 69
Page 71

Piston
Fuel Pump
Turbocharger

Page 64
Page 44
Page 73

USER INFORMATION

- . Parts numbers appearing in () are for identification purposes only and should not be used when ordering service replacement parts.
- . The reference numbers appearing on the art pages is for publication use only.
- . Assembly content is shown by part number indentation.
- . Options are engineered production part groupings, specifically used for compiling engine orders.
- . Option numbers are for reference only and are not sold for service.
- . Use assembly and not option content to determine service parts replacement.

ALWAYS SPECIFY ENGINE MODEL AND SERIAL NUMBER WHEN ORDERING PARTS FROM THIS CATALOG

Engine Model _____ Engine Serial No. _____

MFG Make _____ Model _____ Chassis No. _____

Fuel Pump Assembly No. _____ Injector No. _____

Belt, Fan _____ Belt, Water Pump _____ Belt, Gen. _____

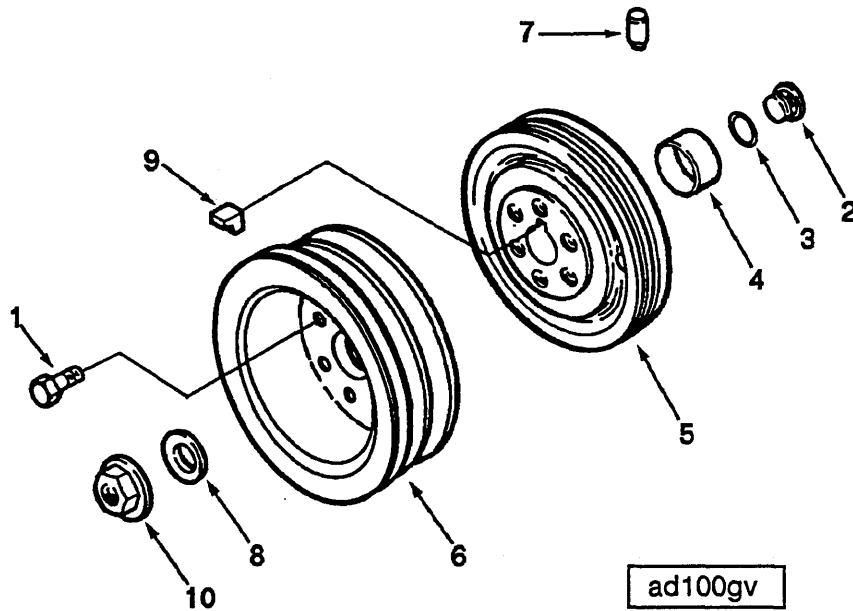
Element, Fuel Filter _____ Full Flow Lub. Filter _____

Air Cleaner _____ By-Pass Lub. Filter _____

Special Equipment

Table of Contents

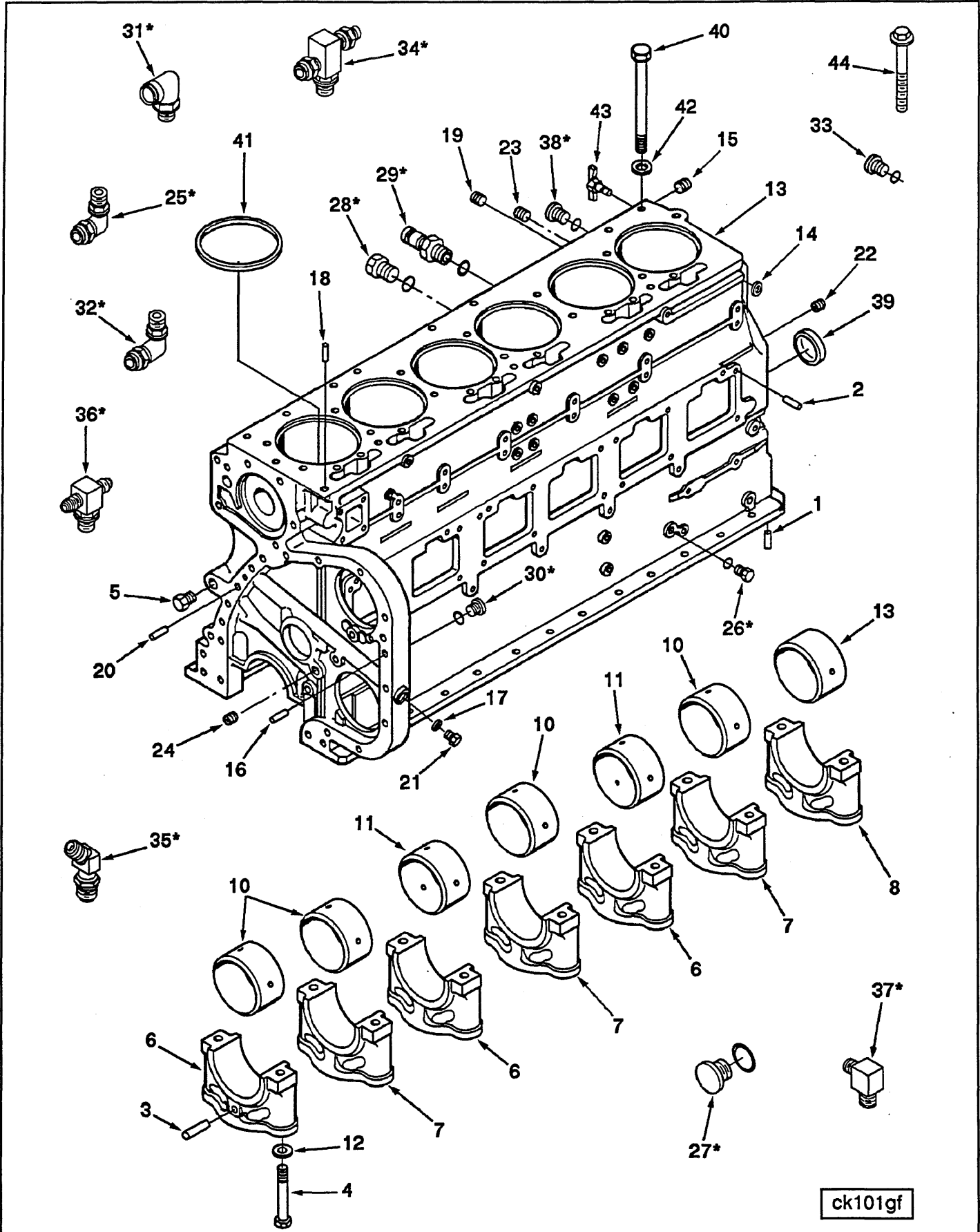
	Page No.	Page No.	
Accessory Drive Pulley	2	Vibration Damper	25
Alternator Mounting	29	Water Header Cover	20, 21, 53
Breather Location	23	Water Inlet Connection	82
Cam Follower Housing	15	Water Manifold	85
Camshaft	65	Water Outlet	86
Connecting Rod	64	Water Pump/Idler Gear	19
Corrosion Resistor	81	Option Number Index	A-1
Crankshaft	11	Part Number Index	B-1
Crosshead	66		
Cylinder Block	5, 7		
Cylinder Head	69		
Cylinder Liner Kit	9		
Damper Mounting	26		
Dipstick And Tube	60		
Engine Piston	64		
Exhaust Clamp	87		
Fan Drive Arrangement	33		
Fan Spacer and Pilot	74		
Flywheel	49		
Flywheel Housing	39		
Fuel Crossover	16		
Fuel Filter	35		
Fuel Hose	36		
Fuel Pump	44		
Fuel Pump Drive	43		
Fuel Pump Inlet Fitting	37		
Fuel Tubing	47		
Fuel Valve	48		
Gasket Sets	88, 89		
Gear Cover	31		
Hand Hole Cover And Fill	41		
Injector	71		
Intake Manifold	53, 55		
Lubricating Oil Filter/ Cooler	57, 59		
Lubricating Oil Pump	51		
Manifold Pressure Tube	54		
Oil Pan	63		
Piston Cooling Nozzle	8		
Piston Rings	64		
Rocker Lever Housing	13		
Sets and Kits	90		
Starter	75		
Throttle Lever	78		
Turbocharger	73		
Turbocharger Location	77		
V-Belt	24		



Ref No.	Part Number	Part Name	Req	Remarks
		ACCESSORY DRIVE PULLEY OPTION AD1143		
1	175833	Screw, Hexagon Head Cap	6	Base poly-vee water pump drive pulley with bolt on pulley to provide three 7.04 inch diameter grooves to drive fan and one 7.55 inch diameter groove for 1/2 inch vee-belt 4.0 inch forward of front face of block.
2	3040813	Plug, Threaded	1	
3	3037537	Seal, O Ring	1	
	3023473	Pulley, Accessory Drive	1	
4	190397	Sleeve, Wear	1	
5	(3013335)	Pulley, Accessory Drive	1	
6	3039596	Pulley, Accessory Drive	1	
7	70550	Dowel, Pin	1	
8	193136	Washer, Plain	1	
9	3008947	Seal, Keyway	1	
10	3012526	Nut, Hexagon Flange	1	

NOTES

A series of horizontal lines for writing notes, with a circular punch hole on the left side of each line. The lines are evenly spaced and extend across the width of the page.



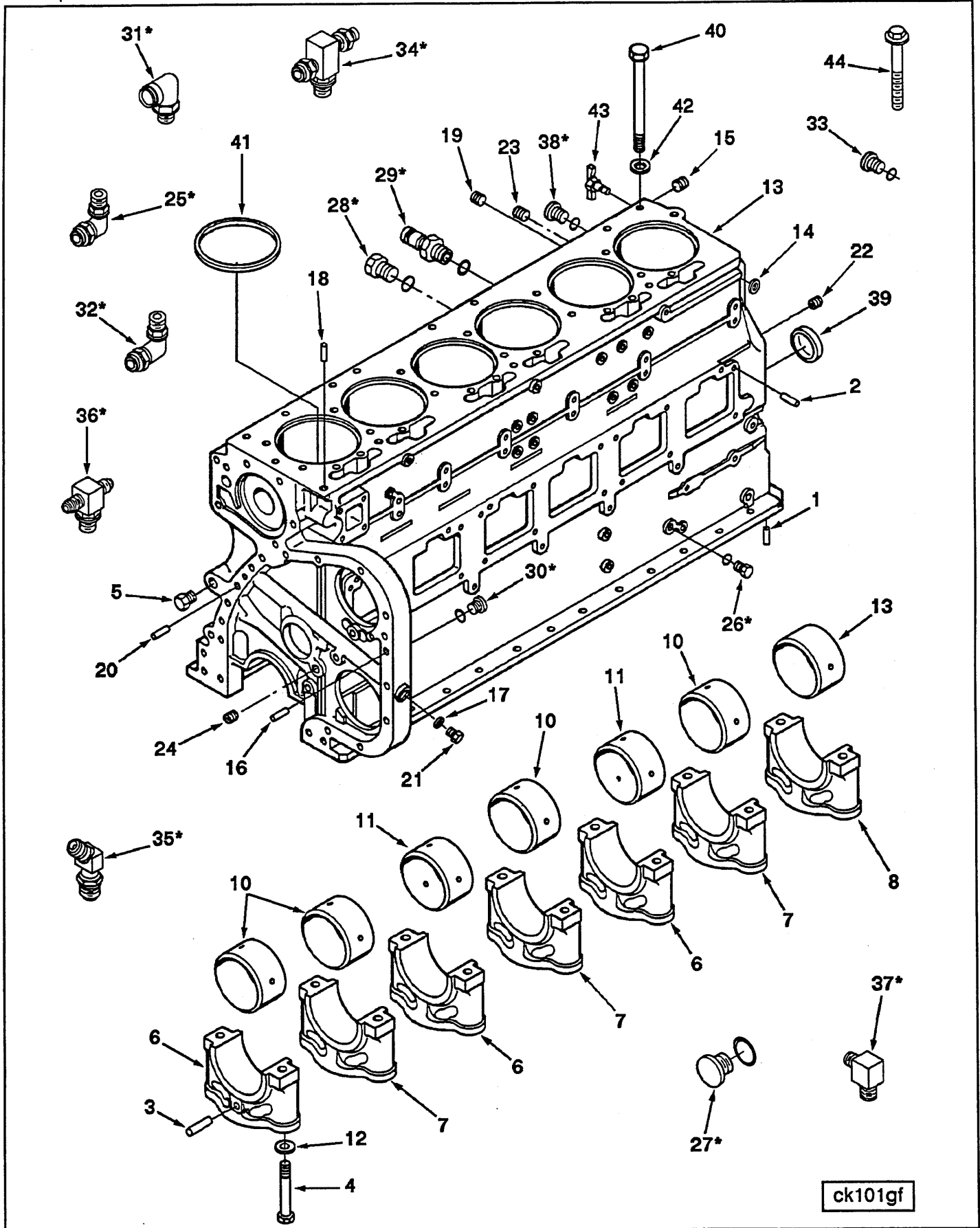
ck101gf

Ref No.	Part Number	Part Name	Req	Remarks
		CYLINDER BLOCK OPTION BP1115		Base parts for turbocharged BC I and BC II 855 Industrial engines of more that 300 HP. Includes hard block and regular piston cooling. Do not use with Cummins 2 cylinder compressor (cam follower interference). For Brazil use AR87259 in place of 3012238 and use AR87193 in place of AR45217.
	3801743	Block, Cylinder		
1	67211	Dowel, Rear Main Bearing	2	
2	68585	Dowel, Pin	6	
3	202903	Pin, Roll	2	
4	208346	Screw, Hexagon Head Cap	14	3/4 - 16 x 6 5/8 Inch
5	3068100	Plug, Orifice	1	
6	3008047	Cap, Main Bearing	3	
7	3008048	Cap, Main Bearing	3	
8	3008049	Cap, Main Bearing	1	
	3801106	Kit, Camshaft Bushing	1	
9	3011951	Bushing, Camshaft	1	No. 7
10	3028075	Bushing, Camshaft	4	No. 1, 2, 4 and 6
11	3028269	Bushing, Camshaft	2	No. 3 and 5
12	3046246	Washer, Plain	14	3/4 Inch
13	(3068094)	Block, Cylinder		
14	S-679	Washer, Plain	1	3/8 Inch
15	S-966-E	Plug, Pipe	1	1 1/2 NPT
16	60408	Dowel, Pin	3	
17	66292	Washer, Plain	1	7/8 Inch
18	68445	Pin, Groove	6	7/8 Inch
19	69901	Plug, Pipe	4	1/8 NPT
20	70653	Dowel	1	
21	210884	Plug, Threaded	1	7/8 - 18 UNS
22	3008466	Plug, Pipe	1	1/4 NPT
23	3008468	Plug, Pipe	2	1/2 NPT
24	3013786	Plug, Pipe	4	3/8 NPT
25	3037535*	Elbow, Male Union	1	
26	3037536*	Plug, Threaded	4	9/16 - 18 UNF
	3037537	Seal, O Ring	1	
27	3040814*	Plug, Threaded	1	1/16 - 20 UNF
	3036666	Seal, O Ring	1	
28	3040818*	Plug, Threaded	1	1 3/16 - 12 UNF
	3035228	Seal, O Ring	1	
29	3042619*	Nipple, Coupling	1	
	3037537	Seal, O Ring	1	
30	3046202*	Plug, Threaded	4	3/4 - 16 UNF
	3046201	Seal, O Ring	1	
31	3065118*	Elbow, Plain Adapter	1	
	3036666	Seal, O Ring	1	
32	3067503*	Elbow, Male Union	1	
33	3066325	Plug, Threaded	1	
		Continue on next page.....		
				*Hardware kit that accompanies the block assembly. Refer to Topic 90T1-7.

Group No. 01.01

Cylinder Block

Option No. BP1115



ck101gf