

TYM T430 / T450



TONGYANG MOOLSAN CO., LTD.

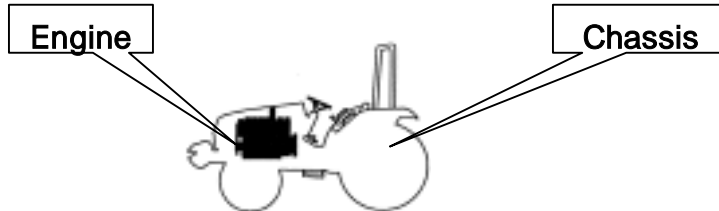
Important tips of Parts Catalogue

We thank you for your purchasing our product, manufactured under strict quality control, by gathering plenty of experiences and new technology, designed for a comfort and pleasant work.

1. Part Composition

This catalogue deals with engine and chassis.

Detailed classifications are listed in the following page.



2. For locating parts easily, Please Note:

A. If you know the assembly where the part is used.

- Refer to the relevant figure from the identifying group symbol illustration,
- Locate the relevant chapter
- Refer to the particular chapter desired.

3. For ordering parts

To obtain spare parts please contact your nearest dealer and give him the details listed below.

Tractor Model : Tractor T430
Tractor Serial Number : W050000
Part Number : 16001032000
Description : Air cleaner assembly
Quantity required: 1

Serial Number



4. For ordering PARTS CATALOGUE

This is Priced item and one is to order the same on part No. 1250 950 001 0

This supersedes all our editions.

Note) When replacing parts, please use original spare parts to be sure of the performance and the longer life of the product

The information in this catalogue may at any time be modified without a prior notice for the improvement of performance, please consult our spare parts dept. for the detailed inquiry.

5. How to use parts catalogue

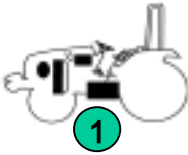
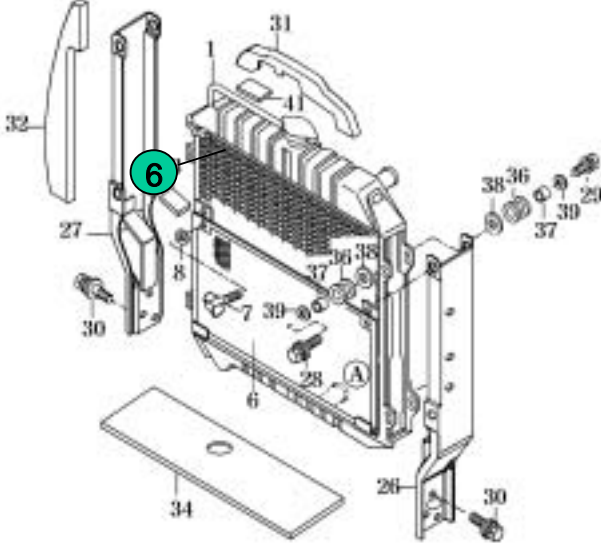
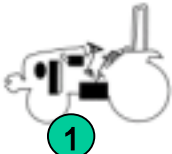
FIG 023 2	RADIATOR 3	P1 4	Month/Year 5 07 / 03	
				
NOTE	13			

FIG 023 2	RADIATOR 3	P1 4	Month / Year 5 07 / 03				
KEY NO	PART NO	PART NAME	SPEC	QTY	REPAIR	FIG SERIAL NO	REMARKS
023	001	145710-02001	RADIATOR SET	1			
023	002	145710-02101	RADIATOR SET	1			
023	003	145710-02171	SHROUD	1			
023	006	145710-02301HB	NET COMP	1			
02	V27	12	BOLT, WING	MSX12	10	11	12
NOTE	13						

Group Indication : Indicate the relevant location of the part with a symbol illustration.

Figure Number: Indicate the relevant section of the machine with a figure number.

Section Name : Indicate the section name of the machine

Section Page : Page number of the section in this catalogue.

Date : Show the Month/Year of the section made or updated

Key number : Indicating number of each parts in the illustration.

The part number starting with V or M means it is TYM's standard part

The alphabet at the end of part number means the status of material or the color of paint

Legend : M:Machining, DG:Black, BR:Bright Red, SW:Summer White , MS:Metallic Silver DD:Heat proof Black, PB:Pure Black TY: Tangerine Yellow etc

Description : Description of a part, Abbreviation means as follows.

- Indicate the mixture condition of a part

ASSY : Assembly with a mixture of several parts, so can be broke up retaining their original form

COMP : Assembly with a mixture of several parts, but can not be broke up retaining their original form

SUB : mean the same as ASSY but used in lower level in aid.

SET : Part consist of ASSY, COMP, and part(s) as a group

- Indicate the location of a part

LH : Left, **RH** : Right, **FR**: Front, **RR**: Rear, **UPR**: Upper, **LOW**: Lower

Type : Type of the standard items like bolt or nut

Quantity : Total quantity of the part referred to in the page.

Symbol below indicate options. So, show the quantity of each option.

Note) AR means as requested quantity.

Repair Parts consumption frequency class: indicate the level of a part in aid of stocking spares, anticipating the service requirements.

A :Fast moving part(frequently required)

B :Medium moving part (sometimes required)

C :Slow moving part(rarely required)

Modification :

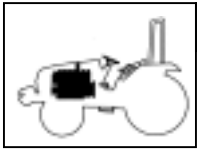
Month/Year~ : From which the change starts

~ Month/Year : To which the part installed

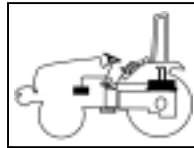
Notes : explain some reference data

Remark : indicate reference data or abbreviation in the content.

ENGINEERING GROUP INDEX



1 ENGINE



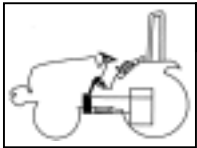
8 HYDRAULICS



2 E/G ACCESSORIES&CONTROL



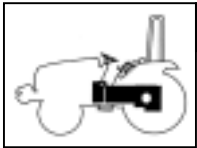
9 3- POINT LINK



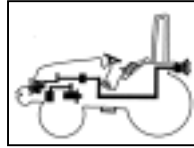
3 CLUTCH & CONTROL



10 SHEET METAL & SEAT



4 TRANSMISSION & REAR AXLE



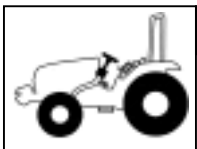
11 ELECTRICALS & HARNESS



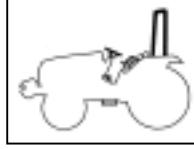
5 BRAKE & CONTROL



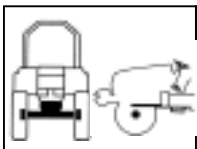
12 WEIGHT, LABEL& TOOLS



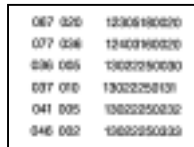
6 TIRE,RIM & POWER STEERING



13 R.O.P.S



7 FRONT AXLE,SUPPORTER&
DRIVE SHAFT



14 NUMERICAL INDEX

067 020	12005180020
077 036	12400180020
036 065	13022250030
037 010	13022250131
041 035	13022250232
046 052	13022250333

CONTENTS

ENGINE

1 ENGINE(V2203-M) PART NO : 1250 100 001 0 (Tier 2)

FIG 001	CRANK CASE	70
FIG 002	OIL PAN	72
FIG 003	CYLINDER HEAD	74
FIG 004	GEAR CASE	76
FIG 005	HEAD COVER	78
FIG 006	OIL FILTER	80
FIG 007	DIPSTICK & GUIDE	82
FIG 008	OIL PUMP	84
FIG 015	OIL FILLER FLANGE	86
FIG 100	MAIN BEARING CASE	88
FIG 101	CAMSHAFT & IDLE SHAFT	90
FIG 102	PISTON & CRANKSHAFT	92
FIG 105	FUEL CAMSHAFT & GOVERNOR SHAFT	94
FIG 200	ENGINE STOP LEVER	96
FIG 201	STOP SOLENOID	98
FIG 202	INJECTION PUMP	100
FIG 204	GOVERNOR	102
FIG 205	SPEED CONTROL PLATE	104
FIG 206	NOZZLE HOLDER & GLOW PLUG	106
FIG 301	FUEL PUMP (MECHANICAL)	108
FIG 402	FAN DRIVE PULLEY	110
FIG 404	FLYWHEEL	112
FIG 406	OIL SWITCH & PLUG	114
FIG 500	WATER FLANGE & THERMOSTAT	116
FIG 501	WATER PUMP	118
FIG 504	ALTERNATOR & FAN	120
FIG 600	VALVE & ROCKER ARM	122
FIG 601	INLET MANIFOLD	124
FIG 602	EXHAUST MANIFOLD	126
FIG 808	ACCESSORIES & SERVICE PARTS	128
FIG 809	LABEL	130

CHASSIS

2 ENGINE ACCESSORIES & CONTROL

FIG 022 AIR CLEANER	136
FIG 023 RADIATOR	138
FIG 024 MUFFLER	140
FIG 025 FUEL TANK	142
FIG 027 ACCELERATOR	144

3 CLUTCH & CONTROL

FIG 029 CLUTCH	150
FIG 030 CLUTCH PEDAL	152

4 TRANSMISSION & REAR AXLE

FIG 031 TRANSMISSION FRONT CASE	158
FIG 032 INPUT & COUNTER GEAR	160
FIG 033 MAIN CHANGE GEARS	162
FIG 034 REVERSE GEARS	164
FIG 036 P.T.O DRIVE SHAFT	166
FIG 037 MAIN CHANGE LEVER	168
FIG 038 REVERSE CHANGE LEVER	170
FIG 039 TRANSMISSION MID CASE	172
FIG 043 TRANSMISSION REAR CASE	174
FIG 044 SUB CHANGE GEARS	176
FIG 045 SUB CHANGE LEVER	178
FIG 047 4WD DRIVE GEARS	180
FIG 050 4WD CHANGE LEVER	182

CHASSIS

FIG 051 P.T.O CHANGE GEARS	184
FIG 051A P.T.O CHANGE GEARS	186
FIG 051B P.T.O CHANGE GEARS	188
FIG 052 P.T.O CHANGE LINKAGE	190
FIG 052A P.T.O CHANGE LINKAGE	192
FIG 052B P.T.O CHANGE LINKAGE	194
FIG 053 P.T.O CHANGE LEVER	196
FIG 053A P.T.O CHANGE LEVER	198
FIG 054 REAR DIFFERENTIAL GEARS	200
FIG 055 REAR AXLE & HOUSINGS	202

5 BRAKE & CONTROL

FIG 056 BRAKE & HAND BRAKE	208
FIG 056A BRAKE	210
FIG 057 BRAKE PEDAL & LINKAGE	212

6 TIRE, RIM & POWER STEERING

FIG 058 REAR WHEEL MOUNTING	218
FIG 059 STEERING WHEEL	220
FIG 062 STEERING VALVE & CYLINDER	222
FIG 068 FRONT WHEEL MOUNTING	224

7 FRONT AXLE

FIG 063 FRONT AXLE BRACKET	230
FIG 064 FRONT DIFFERENTIAL GEARS & SHAFT	232
FIG 065 FRONT AXLE HOUSING	234
FIG 066 FRONT GEAR CASE (1)	236
FIG 067 FRONT GEAR CASE (2)	238

CHASSIS

8 HYDRAULIC

FIG 061 GEAR PUMP	-244
FIG 069 CYLINDER CASE	-246
FIG 070 LIFT ARM	-248
FIG 071 CYLINDER	-250
FIG 073 POSITION LINK	-252
FIG 075 CONTROL VALVE	-254
FIG 076 DRAFT LINK	-256
FIG 077 POSITION & DRAFT LEVER	-258
FIG 081 HYDRAULIC PIPE(1)	-260
FIG 082 HYDRAULIC PIPE(2)	-262
FIG 082A HYDRAULIC PIPE(2)	-264
FIG 083 P. T.O VALVE & RELIEF VALVE	-266
FIG 128 EXTERIOR HYD.VALVE	-268

9 3-P LINK

FIG 084 3-P LINK BRACKET	-274
FIG 085 HITCH & 3-POINT LINK	-276
FIG 086 LOWER LINK & LIFT ROD	-280

10 SHEET METAL, CAB MOUNTING & SEAT

FIG 090 BONNET(1)	-286
FIG 091 BONNET(2)	-290
FIG 092 SIDE COVER	-292
FIG 093 FENDER & MUDGUARD	-294
FIG 095 SEAT	-296
FIG 095A SEAT	-298
FIG 096 FRONT & REAR MOUNTING	-300
FIG 097 FLOOR	-302
FIG 098 FRONT GLASS & MIRROR	-304

CHASSIS

11 ELECTRICALS & HARNESS

FIG 099 BATTERY & MOUNTING	310
FIG 100 LIGHT	312
FIG 100A LIGHT	314
FIG 101 INSTRUMENT PANEL	316
FIG 102 ELECTRIC SYSTEM	318
FIG 105 P.T.O CONTROL SWITCH	320
FIG 106 HARNESS (1)	322
FIG 108 HARNESS (2)	324

12 WEIGHT, LABEL & TOOLS

FIG 124 TOOL & ACCESSORY	330
FIG 157 WEIGHT	332
FIG 158 LABEL	334
FIG 158 LABEL	336

13 R.O.P.S

FIG 112 R.O.P.S	342
-----------------	-----

14 NUMERICAL INDEX

ENGINE(V2203B)	347
ENGINE(V2203-M)	351
CHASSIS	354

ENGINE

1 ENGINE(V2203-M) PART NO : 1250 100 001 0 (Tier 2)

FIG 001 CRANK CASE	70
FIG 002 OIL PAN	72
FIG 003 CYLINDER HEAD	74
FIG 004 GEAR CASE	76
FIG 005 HEAD COVER	78
FIG 006 OIL FILTER	80
FIG 007 DIPSTICK & GUIDE	82
FIG 008 OIL PUMP	84
FIG 015 OIL FILLER FLANGE	86
FIG 100 MAIN BEARING CASE	88
FIG 101 CAMSHAFT & IDLE SHAFT	90
FIG 102 PISTON & CRANKSHAFT	92
FIG 105 FUEL CAMSHAFT & GOVERNOR SHAFT	94
FIG 200 ENGINE STOP LEVER	96
FIG 201 STOP SOLENOID	98
FIG 202 INJECTION PUMP	100
FIG 204 GOVERNOR	102
FIG 205 SPEED CONTROL PLATE	104
FIG 206 NOZZLE HOLDER & GLOW PLUG	106
FIG 301 FUEL PUMP (MECHANICAL)	108
FIG 402 FAN DRIVE PULLEY	110
FIG 404 FLYWHEEL	112
FIG 406 OIL SWITCH & PLUG	114
FIG 500 WATER FLANGE & THERMOSTAT	116
FIG 501 WATER PUMP	118
FIG 504 ALTERNATOR & FAN	120
FIG 600 VALVE & ROCKER ARM	122
FIG 601 INLET MANIFOLD	124
FIG 602 EXHAUST MANIFOLD	126
FIG 808 ACCESSORIES & SERVICE PARTS	128
FIG 809 LABEL	130

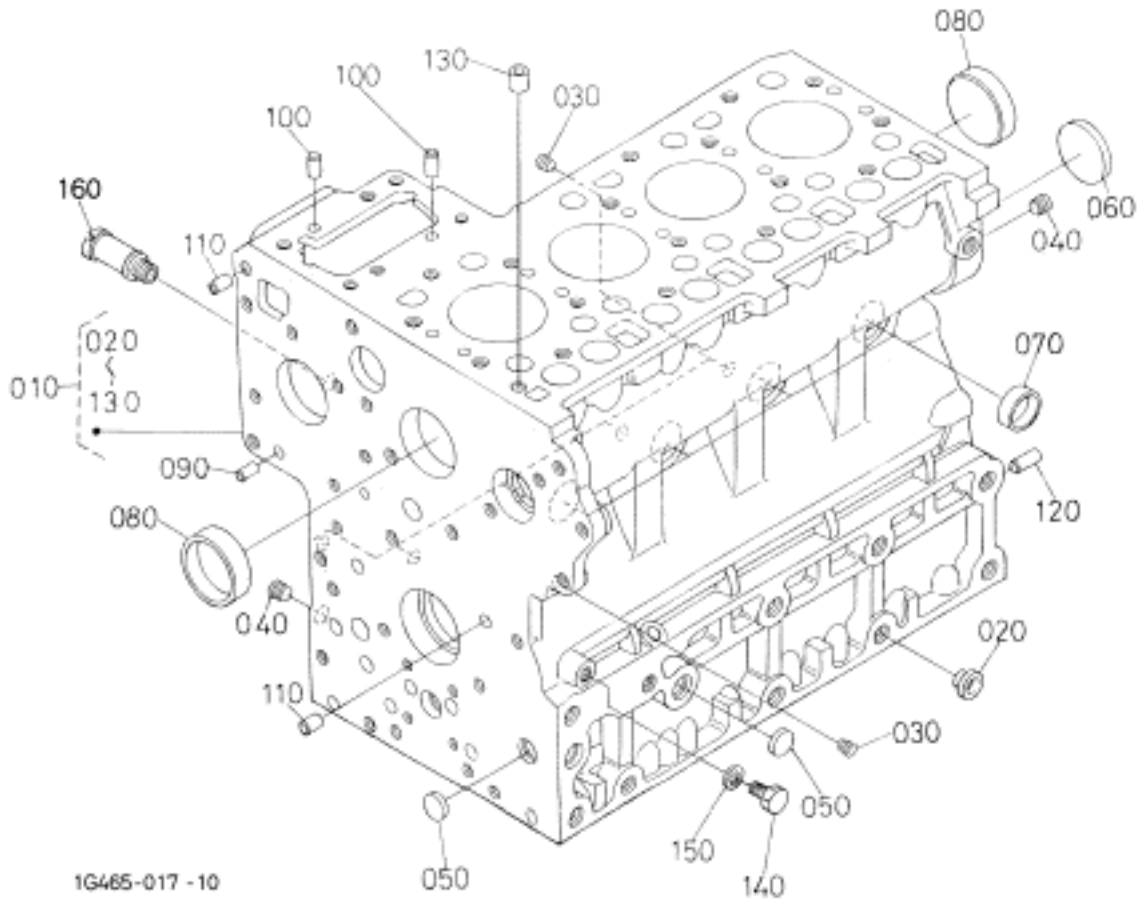
FIG 001

CRANK CASE

P1

Month/Year

05 / 2004



NOTE

V2203-M

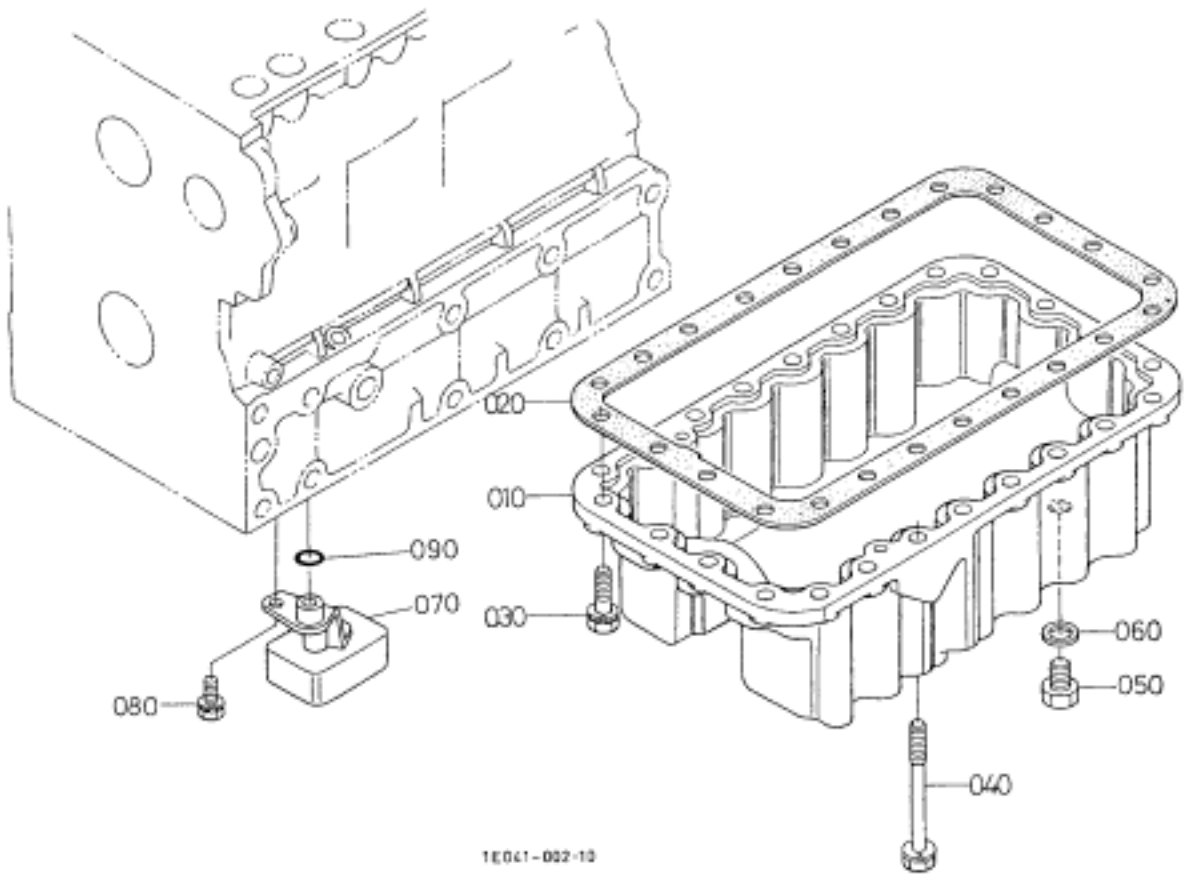
FIG 002

OIL PAN

P1

Month/Year

05 / 2004



NOTE

V2203-M

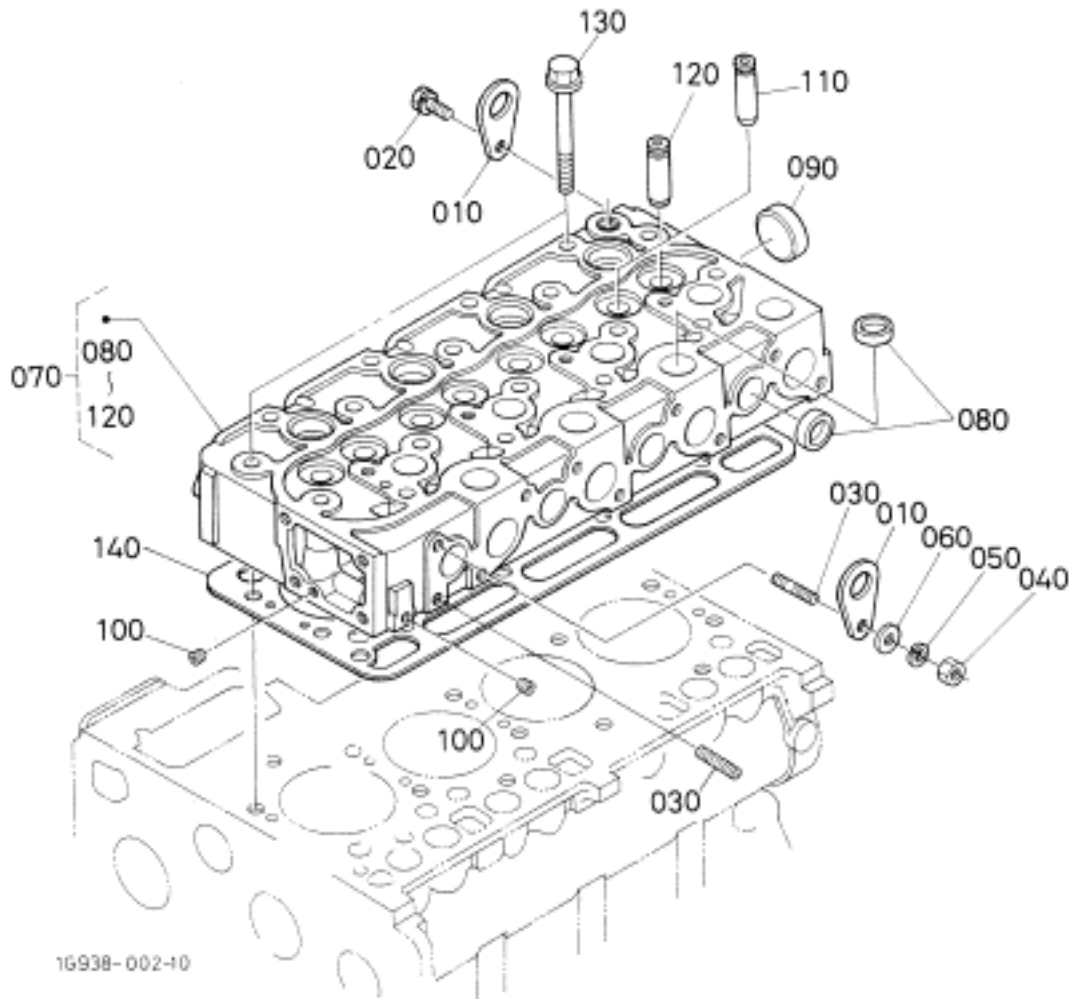
FIG 003

CYLINDER HEAD

P1

Month/Year

05 / 2004



NOTE

V2203-M

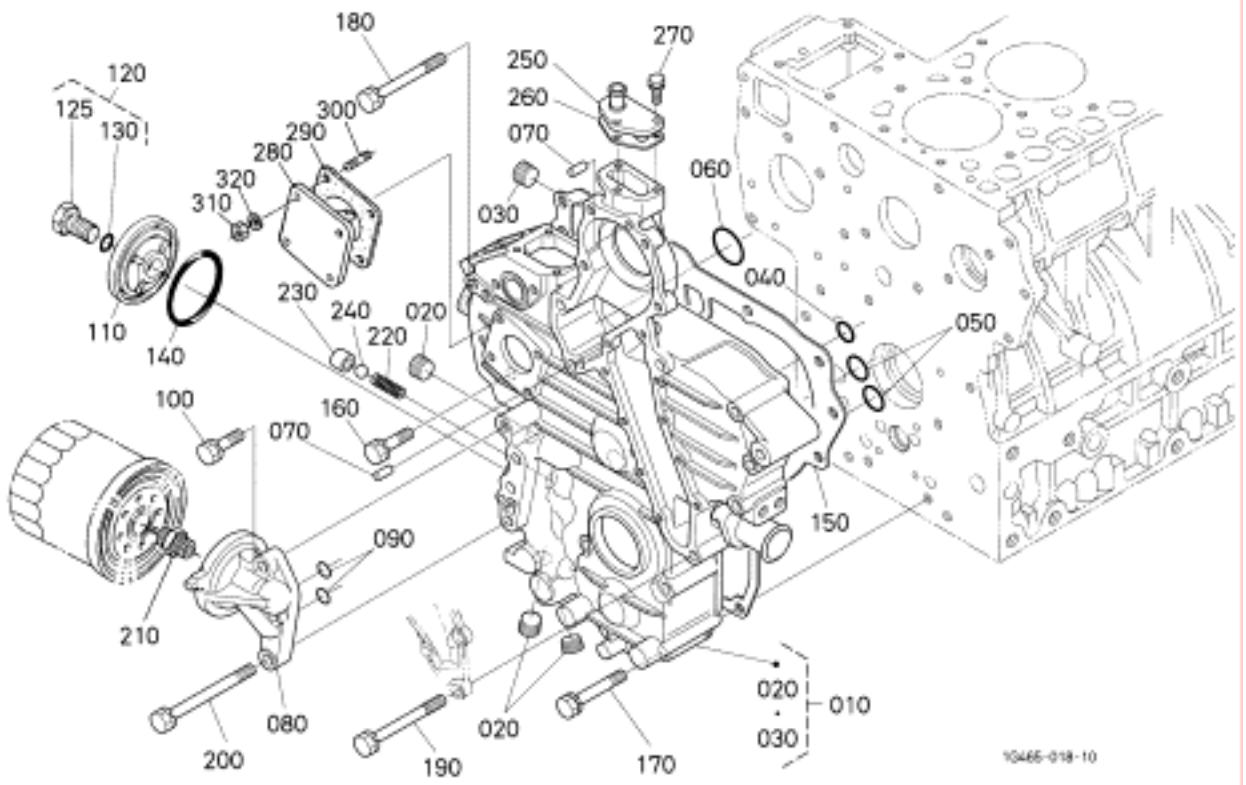
FIG 004

GEAR CASE

P1

Month/Year

05 / 2004



10466-018-10

NOTE

V2203-M

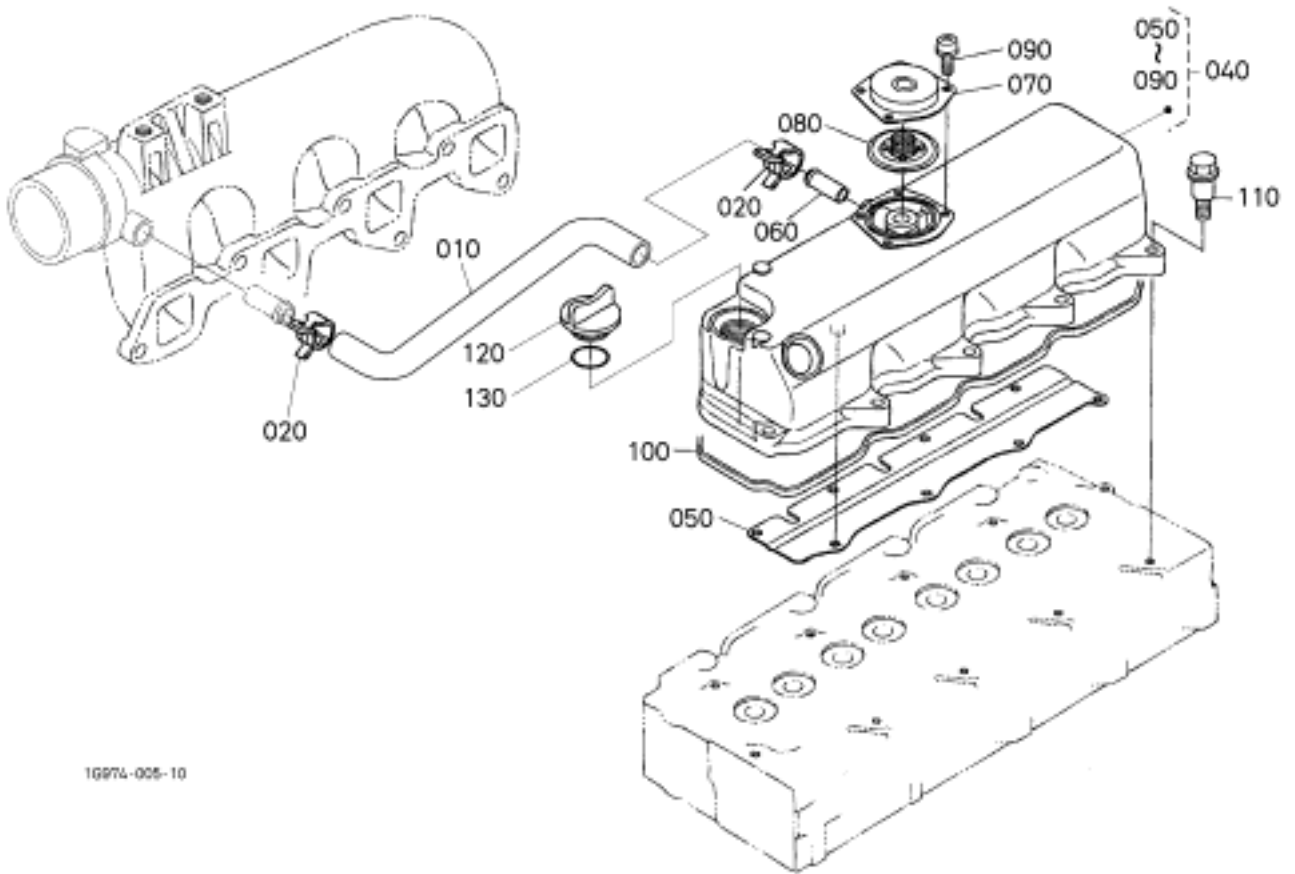
FIG 005

HEAD COVER

P1

Month/Year

05 / 2004



1G974-005-10

NOTE

V2203-M