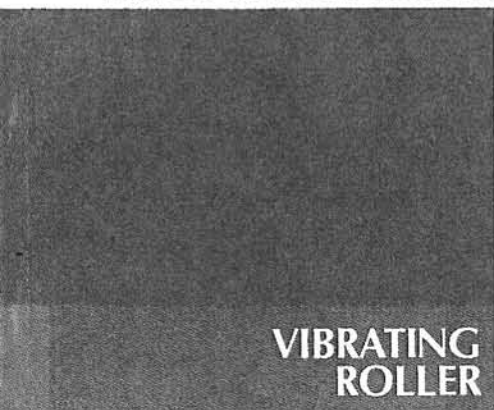


**⚠ Read this handbook thoroughly and understand the whole information contained before trying to operate, inspect and service your machine!**

**OPERATING &  
MAINTENANCE  
INSTRUCTIONS**



**MODEL**

**TW320 -1**

**TW330 -1**

**From** TW320-1 → 4TW50 — 40104~  
TW330-1 → 4TW51 — 40104~

**SAKAI®**

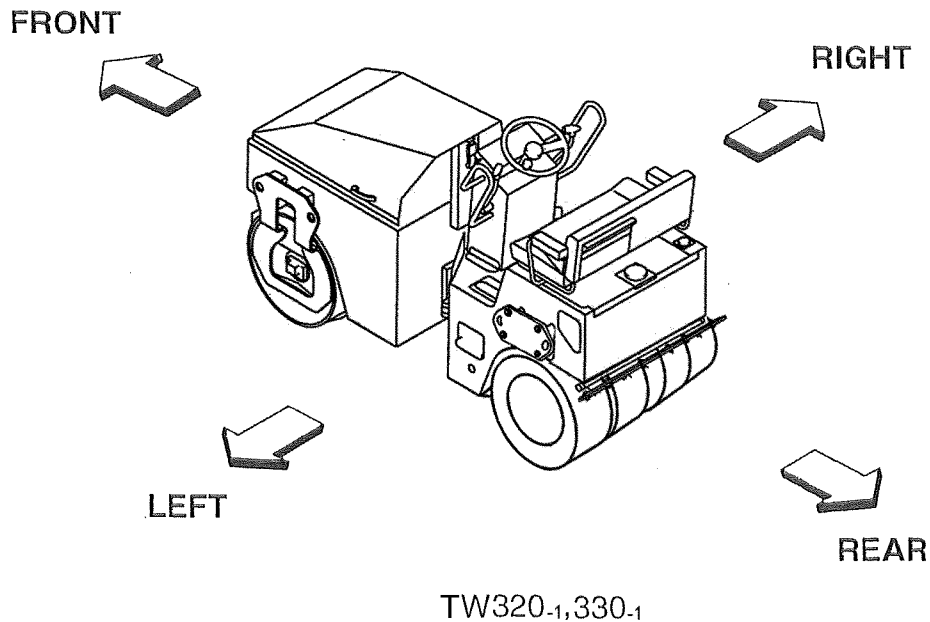
## PREFACE

This operator's manual serves as a guide for the use of your Sakai TW320-1, TW330-1 Vibrating Roller for those who are new to the machine, and also for the people who have experience in using the Machine and want to refresh their knowledge for the machine.

Read this manual thoroughly and try to fully understand the information before operating your machine. Keep this handbook at hand whenever you do your work.

The main subjects of this manual are:

(1) Basic precautions for safety, (2) Operation, (3) Daily maintenance and (4) Specifications. For operation and maintenance of the engine, refer to the Engine Instruction Manual furnished separately. Descriptions in this manual can differ from the machine instructions of your machine due to the results of the investigation and improvement in its design. If you have any inquiry regarding your Machine or this manual, contact our distributors.



**CONTENTS**

PREFACE

MACHINE AND ENGINE IDENTIFICATION NUMBERS ..... 1  
 SAFETY NOTICES ..... 2

1. BASIC PRECAUTIONS FOR SAFETY

1.1 General Precautions ..... 4  
 1.2 Preparation for Safe Operation..... 6  
 1.3 Before Starting the Engine ..... 7  
 1.4 After Starting the Engine ..... 8  
 1.5 During operation..... 8  
 1.6 Loading and Unloading .....10  
 1.7 Transportation .....11  
 1.8 Handling the Battery.....11  
 1.9 Towing .....12  
 1.10 Before Servicing.....13  
 1.11 During Servicing.....14  
 1.12 Safety Decals .....16

2. OPERATION

2.1 Instruments and Controls .....18  
 2.1.1 Operator's station .....18  
 2.1.2 Gauges, indicator lamps and warning lamps.....19  
 2.1.3 Switches .....21  
 2.1.4 Operating levers and pedals .....24  
 2.1.5 Fuse box .....25  
 2.2 Handling and Adjustments .....25  
 2.2.1 Seat adjustment.....25  
 2.2.2 Scraper adjustment and replacement.....26  
 2.2.3 Disengaging the brake when towing.....27  
 2.3 Operation .....28  
 2.3.1 Before-starting inspection .....28  
 2.3.2 Starting the engine .....29  
 2.3.3 After starting the engine .....30  
 2.3.4 Traveling .....31  
 2.3.5 Stopping / Parking .....32  
 2.3.6 Stopping the Engine .....33  
 2.3.7 Check after Stopping the Engine .....33  
 2.4 Vibratory Operation .....34

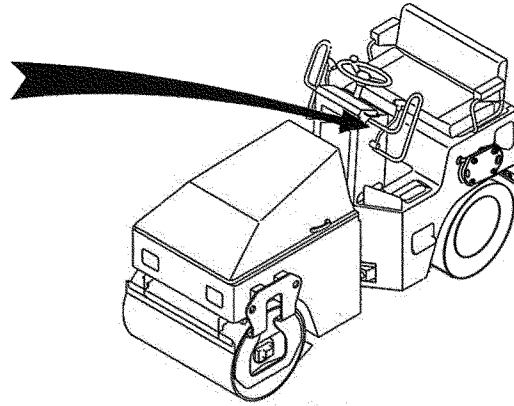
2.5	Sprinkler .....	35
2.6	Liquid Sprayer.....	38
2.7	Precautions for Work.....	39
2.7.1	Compaction operation .....	39
2.7.2	When going downhill .....	39
2.7.3	On a slope .....	39
2.8	Applicable Jobs .....	40
2.9	After Operation.....	40
2.10	Loading and Unloading .....	41
2.10.1	Use of a trailer equipped with a winch.....	41
2.10.2	Self-propelling.....	42
2.10.3	Use of a hoist.....	43
2.11	After Loading the Machine .....	44
2.12	Transportation .....	44
2.13	Operation in Cold Weather .....	44
2.13.1	Fuel oil and grease .....	44
2.13.2	Coolant .....	45
2.13.3	Battery .....	46
2.14	When the Cold Season is Over .....	46
2.15	For a Long Storage Period .....	47
2.16	During the Storage Period.....	47
2.17	When the Battery Has Discharged.....	48
2.17.1	Connection and disconnection of booster cables .....	49
3.	PERIODICAL MAINTENANCE	
3.1	Precautions .....	50
3.2	Walk-Around Checking.....	52
3.3	Periodical Maintenance Points .....	53
3.4	Maintenance Procedure .....	56
(1)	Every 10 hours or daily .....	56
(2)	Every 100 hours .....	58
(3)	Every 200 hours .....	58
(4)	Every 250 hours .....	59
(5)	Every 450 hours .....	59
(6)	Every 500 hours .....	59
(7)	Every 1000 hours .....	61
(8)	As required .....	71
3.5	Consumable Parts .....	75
3.6	Feeding Water and Lubricants .....	76
3.7	Electric Wiring Diagram.....	78
4.	SPECIFICATIONS .....	80

## MACHINE AND ENGINE IDENTIFICATION NUMBERS

When ordering parts or making inquiries about your machine, the following information is requested:

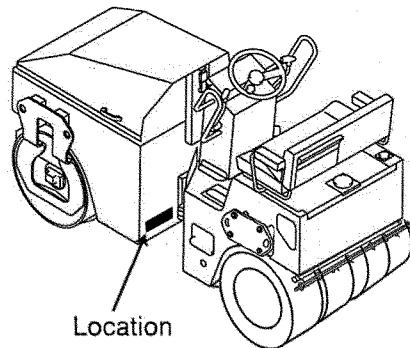
### (1) Machine model

Indicated on the dashboard in the operator's station.

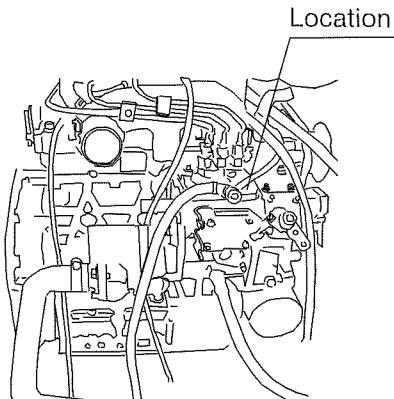


### (2) Machine serial number

TW320-1 ⇨ 4TW50 -○○○○○  
TW330-1 ⇨ 4TW51 -○○○○○



### (3) Engine serial number



## **SAFETY NOTICES**


For the safe use of your machine, correct handling and periodical maintenance are of utmost importance. Thoroughly read the safety precautions described in this manual. Do not attempt to operate and maintain your machine until you gain a full understanding of these safety statements.

This manual covers the proper and safe method of driving and handling of this machine for its intended use. When this machine is used a manner, other than that covered in this manual, you must assume responsibility for your own personal safety.

In this manual and on the machine, you will find safety notices. Each safety notice starts with a signal word as shown below:




### **DANGER**

Denotes that there is an extreme hazard. If you fail to take proper precautions, it is highly likely that you could be killed or seriously injured (The color of the symbol  is red).




### **WARNING**

Denotes that there is a hazard. If you fail to take proper precautions, you could be killed or seriously injured (Symbol  is orange).



### **CAUTION**

Calls attention to safety practices. If you fail to take proper precautions, you could be injured or cause damage to the machine (Symbol  is yellow).

It is almost impossible for the safety notices in this manual and or the machine to cover all the potential dangers. Keep alert to possible dangers not mentioned in this manual and on the decals.

 **WARNING**

**Do not operate your machine before you read its operator's manual thoroughly.**

**Incorrect operation can kill or cause injury.**

**It is your responsibility to operate the machine safely.**

- ☆ Non-approved modifications can pose safety-related problems. Before making any modifications, consult your distributor. For an injury or damage to the machine caused by non-approved modifications, Sakai accepts no responsibility.
- ☆ Basic precautions for safe operation of your machine are discussed beginning on page 4.
- ☆ To operate and work with your machine, you must be qualified.

**⚠ WARNING: Negligence of these instructions can lead to accidents.**

**1. BASIC PRECAUTIONS FOR SAFETY**

**1. BASIC PRECAUTIONS FOR SAFETY**

**1.1 General Precautions**

**■ Read thoroughly the operator's manual.**

- Understand the functions of the controls and gauges. Familiarize yourself with their location and how to operate them. Understand the meaning of all the symbols.



**■ Obey the worksite rules.**

- Follow the worksite rules such as matters forbidden or to be attended to, and working procedures.

**■ Wear protective clothing to suit the work.**

- Wear clothing, safety shoes and hard hat to suit your work.
- Do not wear clothing and accessories that tend to get caught in the controls or protruded portions of the machine. Do not wear oily clothing.
- According to the type of jobs, wear safety goggles or mask.



**■ Know the work area in advance.**

- Know the terrain, geology and conditions of the road surface at the worksite. Start working after securing safety such as stationing a guardsman or putting up barriers where there is a risk of falling of the machine or collapse of shoulder.

**■ Provide against an accident.**

- Decide in advance the means of communication in an emergency. Know the location and use of an extinguisher and first-aid kit.

**■ Know the capability of the machine.**

- Thoroughly understand the performance of your machine and correctly operate the machine to meet the requirements of the job site. Operating the machine beyond its capabilities may lead to an accident. Use your machine within its capability.