

Terex Ta 30 Parts Book

Full download: <http://manualplace.com/download/terex-ta-30-parts-book/>

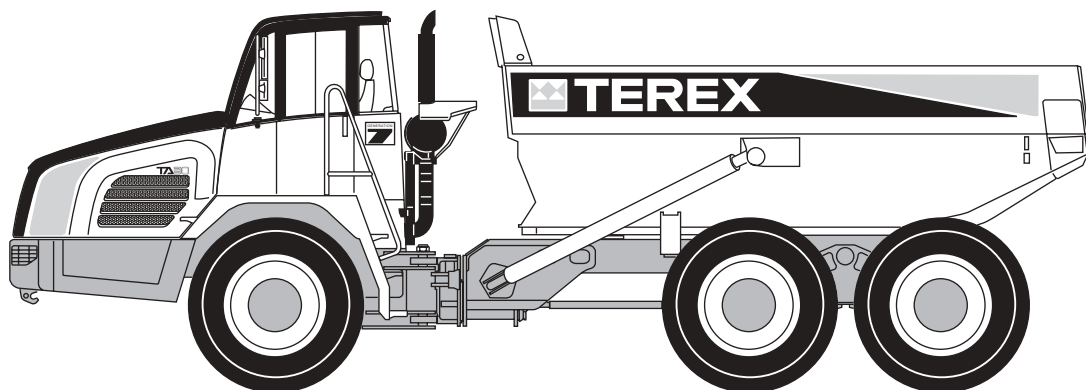
CLICK HERE FOR
TRACTOR
TABLE OF CONTENTS

CLICK HERE FOR
TRACTOR OPTIONAL
TABLE OF CONTENTS

CLICK HERE FOR
TRAILER
TABLE OF CONTENTS

CLICK HERE FOR
TRAILER OPTIONAL
TABLE OF CONTENTS

P11065



TEREX

Parts Book

CLICK HERE TO RETURN TO
MAIN LIBRARY INDEX

Part Number
15500253

TA30 Articulated Truck

(Cummins QSM11-350 Powered with ZF 6WG-310 Transmission)

Serial No. A8281011 through A8281698

June 2002
Revised: November 2006

PUBLISHED BY:
CUSTOMER SUPPORT DEPARTMENT

TEREX EQUIPMENT LIMITED
MOTHERWELL, SCOTLAND

THIS PAGE IS INTENTIONALLY LEFT BLANK



WARRANTY ON PARTS AND ATTACHMENTS

Terex Equipment Limited warrants that for a period of six months or 1000 hours, whichever comes first, after the sale of new Terex replacement parts or attachments by an authorised Terex dealer it will repair, or at its option, replace any defective or malfunctioning part or attachment. This warranty covers only malfunctions resulting from defects in material or workmanship.

This warranty does not cover malfunctions resulting from negligence, alteration, accident or overloading; use for a purpose for which the part or attachment is not designed or approved by Terex; loss of time, inconvenience, loss of use of the vehicle or other consequential damages; or labour for removal or reinstallation of defective or malfunctioning parts or attachments.

Repairs or replacements qualifying under this warranty will be performed by any authorised Terex dealer within a reasonable time following delivery of the malfunctioning part or attachment to the dealer's place of business.

Defective or malfunctioning parts or attachments must be delivered to an authorised Terex dealer's place of business during regular business hours for warranty repairs or replacements. The dealer must be furnished with the purchaser's copy of the sales slip or repair order to validate date of purchase.

* * * * *

SOLE WARRANTY

This is the only express warranty applicable to new Terex parts and attachments sold by Terex dealers and Terex neither assumes nor authorises anyone to assume for it any other obligation or liability in connection with such parts or attachments.

THIS PAGE IS INTENTIONALLY LEFT BLANK

INSTRUCTIONS FOR USE OF TEREX PARTS BOOK

This Parts Book is divided into Major Sections which cover components corresponding to specific areas of the machine.

Printed at the top left hand corner of each Parts Page is an Index Code which includes three numbers - the first of these relates to a Major Section, the second indicates a Sub-section within a Major Section and the last the model PLI number. Certain Major Sections may not apply to the particular model covered in this Parts Book and, consequently, will be omitted.

An illustrated Index page shows all the Major Component Section numbers included in the book. For example -

SECTION 100 - CHASSIS

SECTION 140 - FRONT AXLE GROUP

SECTION 230 - BODY HOIST SYSTEM etc.

Major Component Sections are listed in the 'Table Of Contents' pages together with Sub-section headings. For example to locate the serviceable items of a Steering Cylinder -

1. The Table of Contents shows the steering components to be in Major Section 220.
2. The steering cylinder is listed in Major Section 220, Sub-section 0120
3. Select the Parts Page Code that applies to the unit Serial number for which parts are needed and locate the Page with reference number.
EXAMPLE - 220-0120.

SERIAL NUMBERS - Each Parts Book covers a particular range of unit Serial Numbers.

It is important that unit Serial Numbers are quoted on all orders for Parts.

PARTS LISTS - Parts Forms usually consist of detailed parts information listed on one page together with a parts illustration on the opposite page. The parts list is printed in the order of the reference numbers shown on the parts illustration. The first column lists Note Letters; the second lists the reference numbers; the third shows quantity required and the fourth gives the parts descriptions. Parts which are part of an assembly have their descriptions indented beneath the assembly description.

ILLUSTRATIONS - These show typical assemblies and individual piece parts. They are intended for general reference only and may not always show exact details of parts. Parts are identified on each illustration with an item number. Note the item number of the part required and locate it in the parts list. The part number opposite the item number is the part to order.

INDENTATIONS - Parts which are indented under another part are Sub-groups of a Major Assembly or Sub-assembly. Parts which are not indented are major assemblies or individual component parts which do not belong to a major assembly.

EXAMPLE - 1 9052564 Pump Assy.
 2 9058512 . Shaft
 3 9024169 . Ring
 4 9058132 . Control Assy.
 5 9058135 . . Spring
 6 9072162 Gasket

- If you order Item 1, you will receive Items 1 - 5.
- If you order Item 4, you will receive Items 4 and 5.
- If you order Item 6, you will receive only Item 6.

NOTES - Whenever there is an alphabetical symbol to the left of the item number, refer to the corresponding note at the bottom of the form for information regarding ordering or application of the particular part number(s) noted.

ABBREVIATIONS - The abbreviations in this book have the following meanings -











Amps	Amperes	Hsg	Housing	N.I	Not Illustrated
As R	As Required	I.D	Inside Diameter	N.L.A	No Longer Available
Assy	Assembly	L.H	Left Hand	N.S.S	Not Sold Separately
Brkt	Bracket	L.W	Lockwasher	O.D	Outside Diameter
Cad-Pltd	Cadium Plated	Lg	Long	Pr	Pair
Comm	Commencement of production	Lkg	Linkage	P.T.O	Power-Take-Off
E.S.N	Elastic Stop Nut	Mtg	Mounting	R.H	Right Hand
Ftgs	Fittings	N.C	Note Code	Std	Standard













Articulated Truck



TRACTOR SECTIONS

	CHASSIS	100
	ENGINE	110
	TRANSMISSION	120
	DRIVELINE	130
	FRONT AXLE	140
	BRAKE PARTS	165
	SUSPENSION SYSTEM	180
	ELECTRICAL SYSTEM	190
	FUEL SYSTEM	200
	COOLING SYSTEM	210

	MAIN HYDRAULIC VALVE	215
	STEERING SYSTEM	220
	BODY HOIST SYSTEM	230
	BRAKING SYSTEM	250
	CAB	260
	DECALS	290
	MISCELLANEOUS	300
		
		
		

NOTE: -SECTIONS SHOWN IN BOLD ITALIC ARE ADDITIONS AND/OR REVISIONS SINCE LAST UPDATE

TABLE OF CONTENTS FOR MODEL TA30 TRACTOR

FROM SERIAL NO A8281011

REVISED 10/06

SECT-PAGE-PLI	DESCRIPTION	SERIAL NO. EFFECTIVITY	REVISION AND DATE
SECTION 100	CHASSIS		
100-0010-8291	CHASSIS		R3 07/04
100-0030-8291	SOUND INSULATION		R1 01/04
100-0040-8291	HOOD AND MOUNTING		R3 04/04
100-0070-8291	FENDERS AND MOUNTING	A8281011 TO A8281415	R3 01/04
100-0070-8291	FENDERS AND MOUNTING	A8281416 TO A8281525	07/04
100-0070-8291	FENDERS AND MOUNTING	A8281526	10/04
100-0135-8291	ROCK AND SUMP GUARDS		
SECTION 110	ENGINE		
110-0020-8291	ENGINE ORDERING INSTRUCTIONS		
110-0030-8291	ENGINE AND MOUNTING	A8281011 TO A8281027	10/04
110-0030-8291	ENGINE AND MOUNTING	A8281028	R6 10/04
110-0050-8291	AIR CLEANER		
110-0060-8291	AIR CLEANER PIPES AND HOSES		09/02
110-0070-8291	EXHAUST AND MOUNTING	A8281011 TO A8281275	R3 07/03
110-0070-8291	EXHAUST AND MOUNTING	A8281276 TO A8281563	R1 07/04
110-0070-8291	EXHAUST AND MOUNTING	A8281564	10/04
SECTION 120	TRANSMISSION		
120-0010-8291	TRANSMISSION MOUNTING		R3 09/05
120-0020-8291	TRANSMISSION BREAKDOWN		
120-0050-8291	CONTROL VALVE		
120-0070-8291	SHIFT CONTROL	A8281011 TO A8281019	10/04
120-0070-8291	SHIFT CONTROL	A8281020 TO A8281027	10/04
120-0070-8291	SHIFT CONTROL	A8281028 TO A8281098	R2 10/04
120-0070-8291	SHIFT CONTROL	A8281099 TO A8281615	07/03
120-0070-8291	SHIFT CONTROL	A8281616	04/05
120-0100-8291	FILTER		
120-0110-8291	OIL LINES-TRANSMISSION	A8281011 TO A8281244	R3 04/04
120-0110-8291	OIL LINES-TRANSMISSION	A8281245 TO A8281657	R1 04/04
120-0110-8291	OIL LINES-TRANSMISSION	A8281658	10/04
120-0220-8291	OIL PUMP		
120-0390-8291	TORQUE CONVERTER		
120-0400-8291	LUBRICATION PIPES		
120-0410-8291	INDUCTIVE TRANSMITTER		
120-0430-8291	ELECTRIC SHIFT CONTROL VALVE		
120-0440-8291	GEARSHIFT		
120-0450-8291	GEARBOX HOUSING		
120-0460-8291	CLUTCH ASSEMBLY KV+K1		
120-0470-8291	CLUTCH ASSEMBLY KR+K2		

TABLE OF CONTENTS FOR MODEL TA30 TRACTOR

FROM SERIAL NO A8281011

REVISED 10/06

SECT-PAGE-PLI	DESCRIPTION	SERIAL NO. EFFECTIVITY	REVISION AND DATE
<u>SECTION 120</u>	<u>TRANSMISSION-CONTINUED</u>		
120-0480-8291	CLUTCH ASSEMBLY K3+K4		
120-0490-8291	RETARDER		
120-0491-8291	RETARDER OIL PIPES		R1 10/04
120-0500-8291	PTO MAIN HYDRAULIC PUMP		
120-0515-8291	EMERGENCY STEERING PUMP		R1 10/04
120-0520-8291	INPUT-DRIVE ASSEMBLY		
120-0530-8291	LAYSHAFT GEARING		R1 04/03
120-0540-8291	DIFFERENTIAL		R1 10/04
120-0625-8291	TEMPERATURE SENSOR		
120-0900-8291	LOOSE PARTS-TRANSMISSION		R1 04/04
<u>SECTION 130</u>	<u>DRIVELINE</u>		
130-0010-8291	FRONT DRIVELINE		09/02
<u>SECTION 140</u>	<u>FRONT AXLE</u>		
140-0010-8291	AXLE COMPLETE-FRONT		
140-0020-8291	AXLE GROUP-FRONT		
140-0030-8291	PLANETARY GEARING-FRONT		
140-0040-8291	WHEEL, RIM AND TYRE-FRONT		
140-0060-8291	DIFFERENTIAL-FRONT		R1 09/05
<u>SECTION 165</u>	<u>BRAKE PARTS</u>		
165-0010-8291	BRAKE PARTS-(ARTICS)		
165-0050-8291	BRAKE GUARDS	A8281011 TO A8281080	R1 04/03
165-0050-8291	BRAKE GUARDS	A8281081	04/03
<u>SECTION 180</u>	<u>SUSPENSION SYSTEM</u>		
180-0020-8291	FRONT SUSPENSION		R1 10/04
<u>SECTION 190</u>	<u>ELECTRICAL SYSTEM</u>		
190-0010-8291	TERMINALS		
190-0011-8291	CONNECTORS		
190-0030-8291	CABLES/HARNESSES-CAB		R1 10/04
190-0040-8291	CABLES/HARNESSES-CHASS/ENG		R5 04/05
190-0070-8291	BATTERY AND CABLES		R1 04/03
190-0080-8291	BATTERY MOUNTING	A8281011 TO A8281178	R1 07/03
190-0080-8291	BATTERY MOUNTING	A8281179 TO A8281490	08/03
190-0080-8291	BATTERY MOUNTING	A8281491	07/04
190-0085-8291	ECU-HYD.SYSTEM MONITORING		R1 04/03
190-0100-8291	ELECTRICAL LIGHTING SYSTEM		R1 07/04

NOTE: -SECTIONS SHOWN IN BOLD ITALIC ARE ADDITIONS AND/OR REVISIONS SINCE LAST UPDATE

NOTE: -SECTIONS SHOWN IN BOLD ITALIC ARE ADDITIONS AND/OR REVISIONS SINCE LAST UPDATE

TABLE OF CONTENTS FOR MODEL TA30 TRACTOR		FROM SERIAL NO A8281011	REVISED 10/06
SECT-PAGE-PLI	DESCRIPTION	SERIAL NO. EFFECTIVITY	REVISION AND DATE
SECTION 190	ELECTRICAL SYSTEM-CONTINUED		
190-0110-8291	ALTERNATOR		R1 09/05
190-0120-8291	STARTER		11/03
190-0270-8291	SWITCHES AND SENSORS	A8281011 TO A8281043	R3 04/04
190-0270-8291	SWITCHES AND SENSORS	A8281044	R2 04/04
190-0300-8291	RADIO CASSETTE AND SPEAKERS		R2 07/04
190-0310-8291	ELECTRICAL HORN		R1 08/03
SECTION 200	FUEL SYSTEM		
200-0010-8291	FUEL TANK AND MOUNTING	A8281011 TO A8281043	R4 01/06
200-0010-8291	FUEL TANK AND MOUNTING	A8281044	R1 04/03
200-0040-8291	FUEL LINES		09/02
200-0050-8291	ACCELERATOR LINKAGE		R1 04/03
SECTION 210	COOLING SYSTEM		
210-0010-8291	RADIATOR ASSEMBLY	A8281011 TO A8281380	R1 04/04
210-0010-8291	RADIATOR ASSEMBLY	A8281381	04/04
210-0020-8291	RADIATOR MOUNTING	A8281011 TO A8281380	R1 04/04
210-0020-8291	RADIATOR MOUNTING	A8281381	04/04
210-0030-8291	RADIATOR PIPING		R1 09/02
210-0035-8291	CHARGE AIR COOLER & PIPING	A8281011 TO A8281392	R2 04/04
210-0035-8291	CHARGE AIR COOLER & PIPING	A8281393	07/04
210-0040-8291	RADIATOR HEADER TANK & HOSES	A8281011 TO A8281235	R2 07/04
210-0040-8291	RADIATOR HEADER TANK & HOSES	A8281236	R2 10/04
210-0060-8291	OIL COOLER AND PIPING-TRANS		
210-0061-8291	TRANS OIL COOLER MOUNTING		R1 04/03
210-0065-8291	OIL COOLER-TRANSMISSION	A8281011 TO A8281013	R3 11/03
210-0065-8291	OIL COOLER-TRANSMISSION	A8281014	R1 10/04
SECTION 215	MAIN HYDRAULIC VALVE		
215-0050-8291	MAIN HYDRAULIC VALVE ASSEMBLY		R3 01/04
SECTION 220	STEERING SYSTEM		
220-0010-8291	STEERING LINES		R5 10/04
220-0090-8291	STEERING VALVE		
220-0120-8291	STEERING CYLINDER	A8281011 TO A8281119	R1 07/03
220-0120-8291	STEERING CYLINDER	A8281120 TO A8281600	11/03
220-0120-8291	STEERING CYLINDER	A8281601	R1 04/05
220-0230-8291	STEERING COLUMN MOUNTING		R3 07/04

TABLE OF CONTENTS FOR MODEL TA30 TRACTOR

FROM SERIAL NO A8281011

REVISED 10/06

SECT-PAGE-PLI	DESCRIPTION	SERIAL NO. EFFECTIVITY	REVISION AND DATE
<u>SECTION 230</u>	<u>BODY HOIST SYSTEM</u>		
230-0020-8291	LINES AND FITTINGS-BODY HOIST		R1 10/04
230-0040-8291	TANK AND MOUNTING-BODY HOIST	A8281011 TO A8281108	R3 01/04
230-0040-8291	TANK AND MOUNTING-BODY HOIST	A8281109 TO A8281226	R1 07/03
230-0040-8291	TANK AND MOUNTING-BODY HOIST	A8281227	R1 04/05
230-0050-8291	PUMP-BODY HOIST		
230-0081-8291	JOYSTICK-BODY CONTROL		
<u>SECTION 250</u>	<u>BRAKING SYSTEM</u>		
250-0020-8291	BRAKE LINES-HYDRAULIC		R5 10/04
250-0060-8291	BRAKE ACCUMULATOR	A8281011 TO A8281160	09/02
250-0060-8291	BRAKE ACCUMULATOR	A8281161 TO A8281490	08/03
250-0060-8291	BRAKE ACCUMULATOR	A8281491	07/04
250-0070-8291	TREADLE VALVE		R2 11/03
<u>SECTION 260</u>	<u>CAB</u>		
260-0010-8291	CAB ASSEMBLY	A8281011 TO A8281601	
260-0010-8291	CAB ASSEMBLY	A8281602	10/04
260-0015-8291	CAB MOUNTING		R2 10/04
260-0018-8291	CAB TILT MECHANISM		09/02
260-0030-8291	CAB DOOR-LEFT HAND		
260-0080-8291	SWITCHES AND INSTRUMENTS	A8281011 TO A8281601	R6 10/04
260-0080-8291	SWITCHES AND INSTRUMENTS	A8281602	10/04
260-0090-8291	SEAT-DRIVER		R2 07/04
260-0110-8291	SEAT-PASSENGER		R3 08/03
260-0130-8291	AIR CONDITIONER/HEATER	A8281011 TO A8381601	R4 04/05
<i>260-0130-8291</i>	<i>AIR CONDITIONER/HEATER</i>	<i>A8281602</i>	<i>10/06</i>
260-0140-8291	HEATER LINES AND WIRING		
260-0145-8291	AIR CONDITIONER LINES		
260-0190-8291	WINDSCREEN WASHER		
<u>SECTION 290</u>	<u>DECALS</u>		
290-0010-8291	DECALS-ENGLISH		R6 07/04
<u>SECTION 300</u>	<u>MISCELLANEOUS</u>		
300-0040-8291	MULTI-TUBE CLAMPS AND HARDWARE		

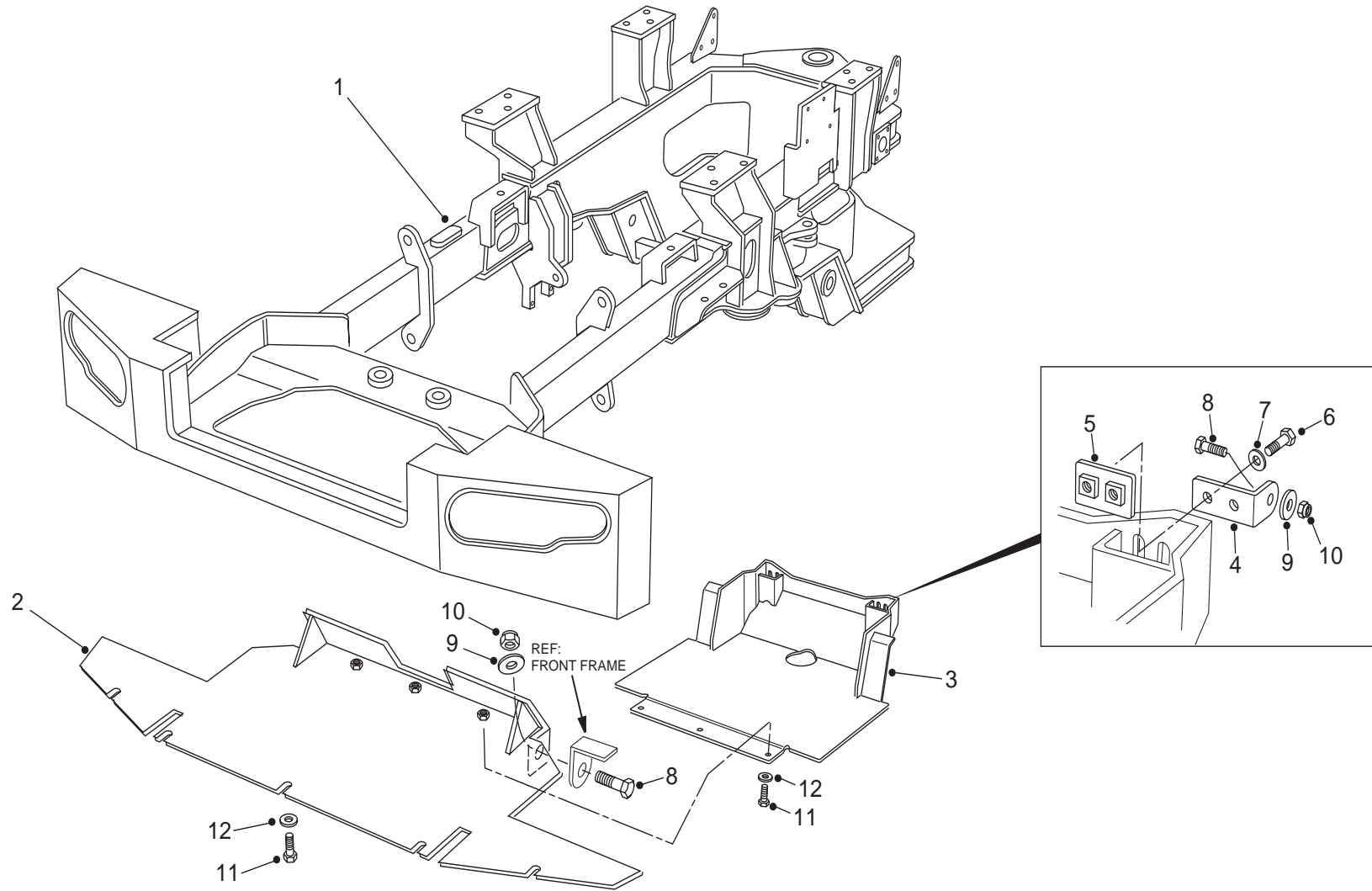
NOTE: -SECTIONS SHOWN IN BOLD ITALIC ARE ADDITIONS AND/OR REVISIONS SINCE LAST UPDATE

R3 07/04 (ECN 105290, ECN 105761, SER CORR)

100-0010-8291 CHASSIS
FROM SERIAL NO. A8281011

DRAWING NO. P11004

P11004



100-0010-8291 CHASSIS
FROM SERIAL NO. A8281011

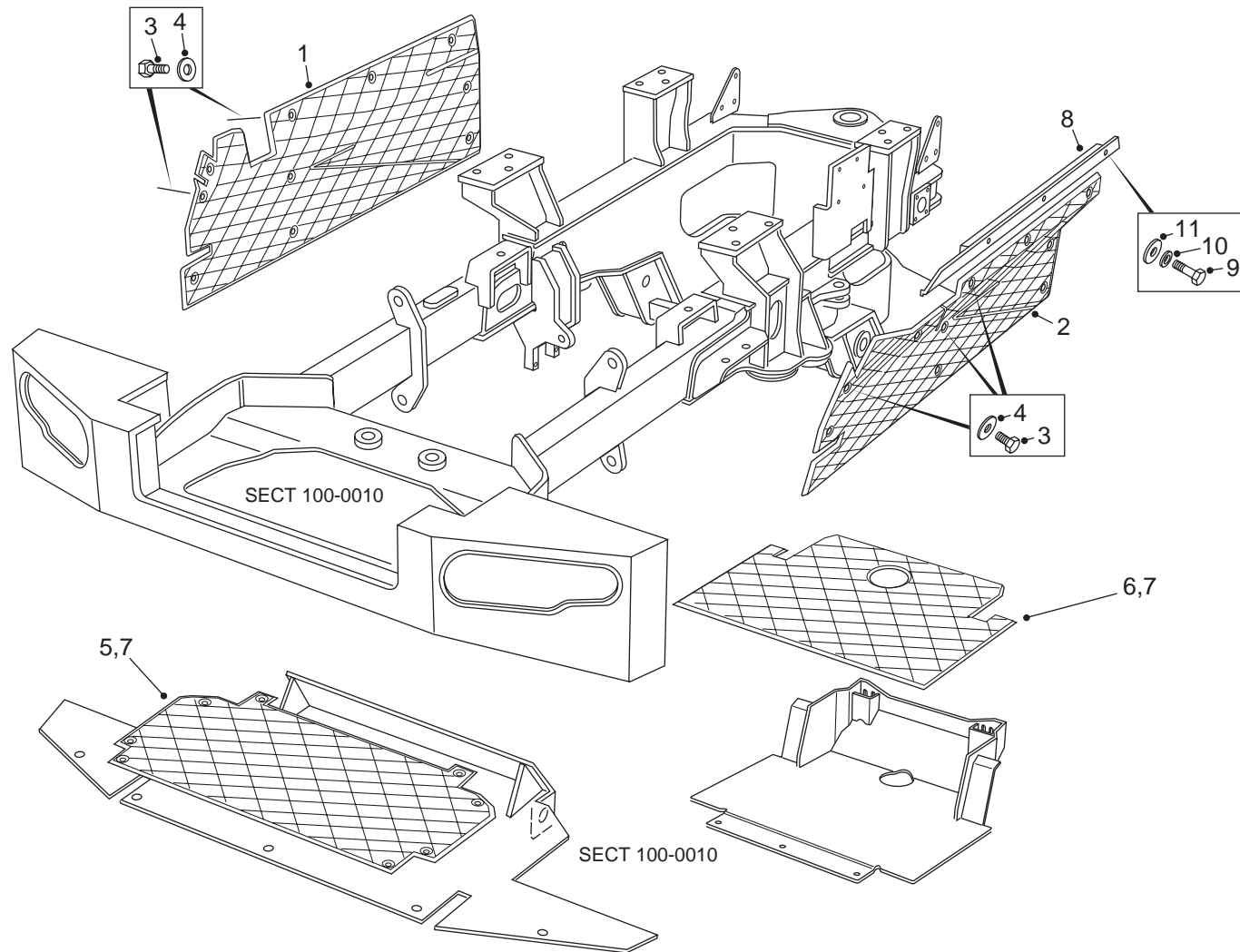
NC	REF	QTY	PART NO.	DESCRIPTION	SER.NO. FROM	SER.NO. TO
001	001		15311008	FRAME ASSY-TRACTOR	A8281011	A8281082
001	001		15315909	FRAME ASSY-TRACTOR	A8281083	
002	001		15314756	GUARD ASSY-CHASSIS		
003	001		15314757	GUARD ASSY-SUMP	A8281011	A8281242
003	001		15317222	GUARD ASSY-SUMP	A8281243	
004	002		15314724	BRACKET-HINGE		
005	002		15314726	CLAMP PLATE		
006	004		06351655	BOLT		
007	004		09191594	WASHER		
008	004		06351670	BOLT		
009	004		07151630	WASHER		
010	004		06471601	LOCKNUT		
011	008		06351230	BOLT		
012	008		09217321	WASHER		

R1 01/04 (ECN 106023)

100-0030-8291 SOUND INSULATION
FROM SERIAL NO. A8281011

DRAWING NO. P11207

P11207

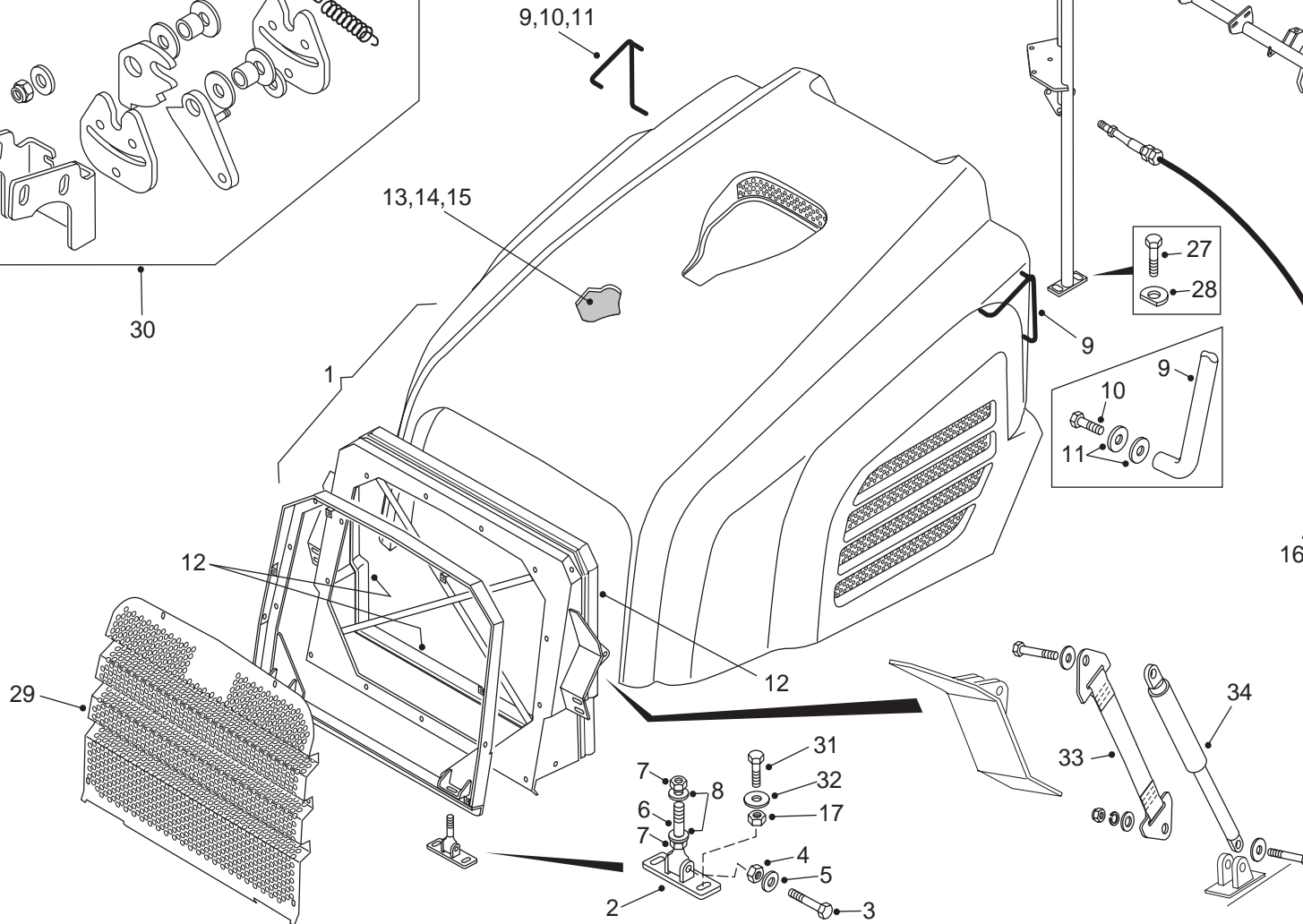
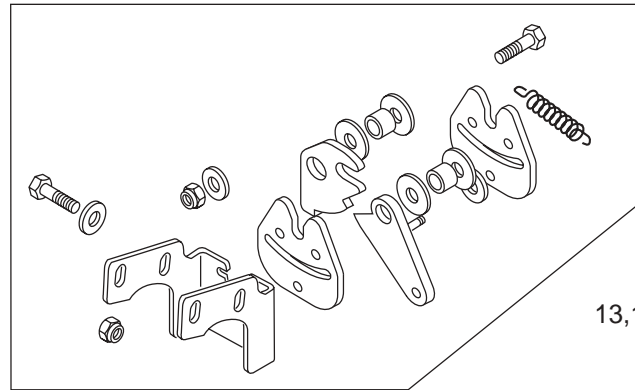


**100-0030-8291 SOUND INSULATION
FROM SERIAL NO. A8281011**

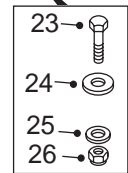
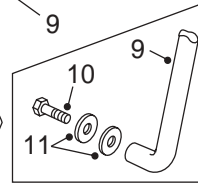
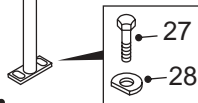
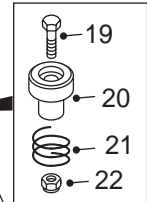
NC	REF	QTY	PART NO.	DESCRIPTION	SER.NO. FROM	SER.NO. TO
001	001		15314503	QUILT-RH WHEEL ARCH		
002	001		15314504	QUILT-LH WHEEL ARCH		
003	015		06351225	BOLT		
004	015		15234758	WASHER		
005	001		15316801	QUILT-SUMP GUARD FT		
006	001		15316802	QUILT-SUMP GUARD REAR	A8281011	A8281242
006	001		15317825	QUILT-SUMP GUARD REAR	A8281243	
007	ASR		09079599	ADHESIVE		
008	001		15316672	PLATE-QUILT MTG		
009	003		06351225	BOLT		
010	003		07161230	LOCKWASHER		
011	003		07151220	WASHER		

100-0040-8291 HOOD AND MOUNTING
FROM SERIAL NO. A8281011

DRAWING NO. P11005



P11005



IN BATTERY BOX

100-0040-8291 HOOD AND MOUNTING
FROM SERIAL NO. A8281011

NC	REF	QTY	PART NO.	DESCRIPTION	SER.NO. FROM	SER.NO. TO
001	001		15312808	HOOD ASSY		
002	002		15313176	.HINGE ASSY		
003	002		06351675	.BOLT		
004	002		15252584	.NUT		
005	002		07151630	.WASHER		
006	002		15313179	.ROD-ADJUSTMENT		
007	004		06432001	.NUT		
008	004		09250715	.WASHER-HARDENED		
009	002		15315116	.HANDLE-HOOD		
010	006		15309253	.BOLT		
011	012		15307237	.WASHER		
012	ASR		15244364	.SEAL-BULK		
013	001		15316531	.INSULATION QUILT-LHS		
014	001		15317432	.INSULATION QUILT-RHS		
015	001		15316533	.INSULATION QUILT-TOP		
016	001		15314415	CABLE-HOOD CATCH		
017	004		06471601	LOCKNUT		
018	001		15312309	GOALPOST WELDMENT	A8281011	A8281235
018	001		15316873	GOALPOST WELDMENT	A8281236	
019	002		15315670	BOLT		
020	002		15307804	STOP-HOOD		
021	002		15315607	SPRING		
022	002		06471001	LOCKNUT		
023	006		06351250	BOLT		
024	006		09217321	WASHER		
025	006		09267660	WASHER		
026	006		06471201	LOCKNUT		
027	002		06351230	BOLT		
028	002		15309558	WASHER D SHAPE		
029	001		15313814	GRILLE		
030	001		15313317	KIT-HOOD CATCH		
031	004		06351655	BOLT		
032	004		09191596	WASHER		
033	002		15313472	STRAP-HOOD RETAINING		
034	002		15313446	GAS STRUT		

100-0070-8291 FENDERS AND MOUNTING
FROM SERIAL NO. A8281011 TO A8281415

100-0070-8291 FENDERS AND MOUNTING
FROM SERIAL NO. A8281011 TO A8281415

NC	REF	QTY	PART NO.	DESCRIPTION	SER.NO. FROM	SER.NO. TO	NC	REF	QTY	PART NO.	DESCRIPTION	SER.NO. FROM	SER.NO. TO
001	001		15316871	LH FENDER PLATFORM			040	001		15247425	SLEEVE-PROTECTOR		
002	001		15305456	STRAP			041	001		15316479	PANEL-INFILL LH		
003	001		15311946	HANDRAIL			042	001		15316656	PANEL-INFILL RH		
004	001		15311947	STEP ASSY-WIRE			043	003		00179839	BOLT		
005	001		15318085	MUDFLAP FRONT LH			044	003		00106263	WASHER		
006	001		15311949	PLATE			045	002		00274208	LOCKNUT		
007	002		15303969	STIFFENER-MUDFLAP			046	002		00179837	BOLT		
008	006		00179820	BOLT			047	002		00179839	BOLT		
009	006		00103320	LOCKWASHER			048	004		00106263	WASHER		
010	006		00102634	NUT			049	004		15317030	U-BOLT		
011	003		06350825	BOLT			050	008		07150815	WASHER		
012	002		07160830	LOCKWASHER			051	008		06470801	LOCKNUT		
013	001		06470801	NUT			052	008		06430801	NUT		
014	008		09267949	WASHER-HARDENED			053	001		15318086	PLATE-STIFFENER		
015	002		00179892	BOLT			054	002		15240002	BOLT		
016	002		00274209	LOCKNUT			055	002		07151220	WASHER		
017	001		15305455	CLIP			056	002		15234758	WASHER		
018	001		15305454	PLATE			057	002		06471201	LOCKNUT		
019	004		06350625	BOLT NSS									
020	004		09267660	WASHER									
021	004		06351230	BOLT									
022	006		07161230	LOCKWASHER									
023	004		07150620	WASHER									
024	002		15317037	CHAIN									
025	001		15316707	MUDFLAP									
026	001		15315908	PLATE									
027	002		15316708	CLAMP PLATE									
028	001		15311950	PLATFORM-RH	A8281011	A8281108							
028	001		15317173	PLATFORM-RH	A8281109								
029	001		15316919	SIDE STEP ASSY-RH									
030	004		06442040	SCREW SET									
031	004		06472001	LOCKNUT									
032	004		07162030	LOCKWASHER									
033	003		06351240	BOLT									
034	003		06471201	LOCKNUT									
035	001		15314429	SPILL GUARD									
036	001		15314376	BRACE-SPILL GUARD									
037	002		15228110	TUBE									
038	002		09366021	GRIP									
039	002		15315330	CHAIN ASSY									

07/04 (ECN 106396)

100-0070-8291 FENDERS AND MOUNTING
FROM SERIAL NO. A8281416 TO A8281525

DRAWING NO. P11503

P11503

