

Terex S17e Elevating Scraper Parts Book

Full download: <http://manualplace.com/download/terex-s17e-elevating-scraper-parts-book/>

CLICK HERE FOR
TRACTOR
TABLE OF CONTENTS

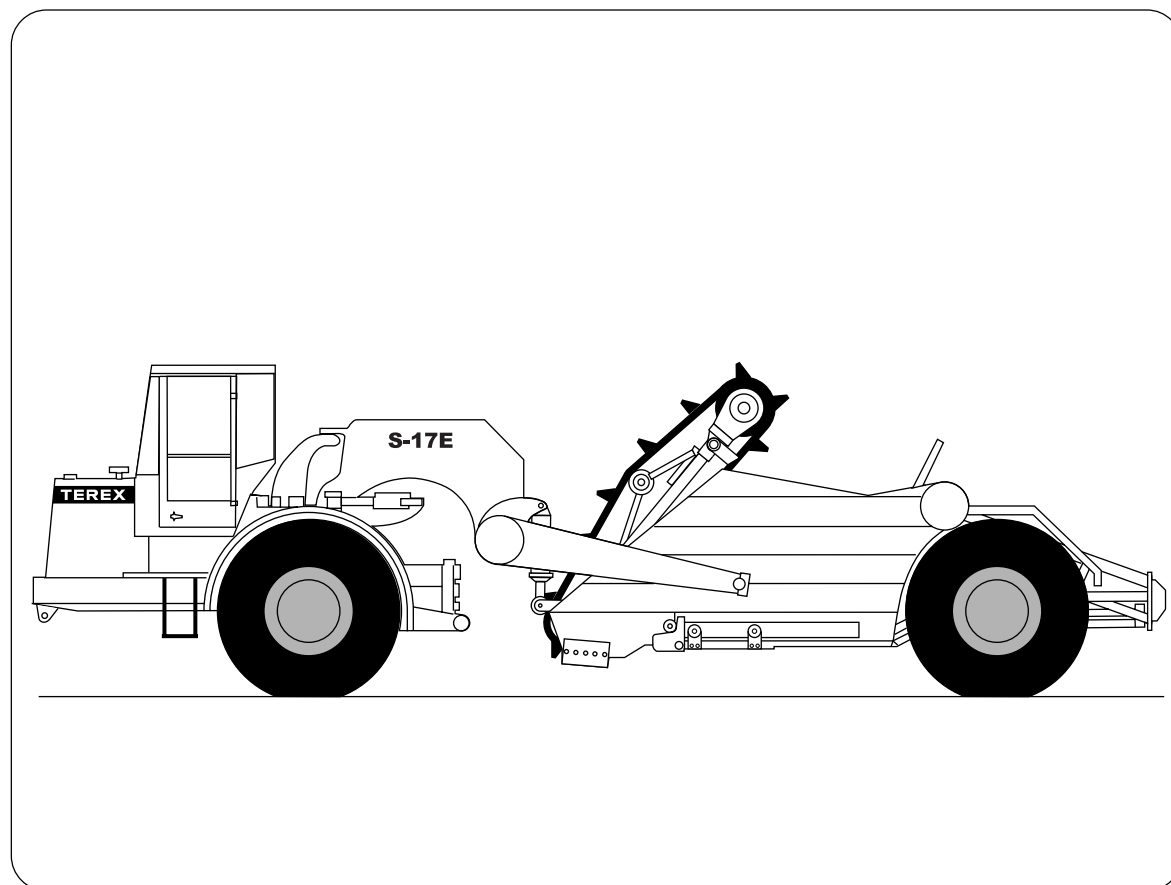
CLICK HERE FOR
SCRAPER
TABLE OF CONTENTS

TEREX

Parts Book

CLICK HERE TO RETURN TO
MAIN LIBRARY INDEX

Part Number
15274963



S17E Elevating Scraper

(Detroit Diesel Series S40E 8.7 LTA Electronic Powered)

From Serial No. S8311001

Jan 01
Revised Feb 02

PUBLISHED BY:
PRODUCT SUPPORT DEPARTMENT

TEREX EQUIPMENT LIMITED
MOTHERWELL, SCOTLAND

THIS PAGE IS INTENTIONALLY LEFT BLANK



WARRANTY ON PARTS AND ATTACHMENTS

Terex Equipment Limited warrants that for a period of six months after sale of new Terex replacement parts or attachments by an authorised Terex dealer it will repair, or at its option, replace any defective or malfunctioning part or attachment. This warranty covers only malfunctions resulting from defects in material or workmanship.

This warranty does not cover malfunctions resulting from negligence, alteration, accident or overloading; use for a purpose for which the part or attachment is not designed or approved by Terex; loss of time, inconvenience, loss of use of the vehicle or other consequential damages; or labour for removal or reinstallation of defective or malfunctioning parts or attachments.

Repairs or replacements qualifying under this warranty will be performed by any authorised Terex dealer within a reasonable time following delivery of the malfunctioning part or attachment to the dealer's place of business.

Defective or malfunctioning parts or attachments must be delivered to an authorised Terex dealer's place of business during regular business hours for warranty repairs or replacements. The dealer must be furnished with the purchaser's copy of the sales slip or repair order to validate date of purchase.

* * * * *

SOLE WARRANTY

This is the only express warranty applicable to new Terex parts and attachments sold by Terex dealers and Terex neither assumes nor authorises anyone to assume for it any other obligation or liability in connection with such parts or attachments.

THIS PAGE IS INTENTIONALLY LEFT BLANK



INSTRUCTIONS FOR USE OF TEREX PARTS BOOK

This Parts Book is divided into Major Sections which cover components corresponding to specific areas of the machine.

Printed at the top left hand corner of each Parts Page is an Index Code which includes three numbers - the first of these relates to a Major Section, the second indicates a Sub-section within a Major Section and the last the model PLI number. Certain Major Sections may not apply to the particular model covered in this Parts Book and, consequently, will be omitted.

An illustrated Index page shows all the Major Component Section numbers included in the book. For example -

SECTION 100 - CHASSIS

SECTION 140 - FRONT AXLE GROUP

SECTION 230 - BODY HOIST SYSTEM etc.

Major Component Sections are listed in the 'Table Of Contents' pages together with Sub-section headings.
For example to locate the serviceable items of a Steering Cylinder -

1. The Table of Contents shows the steering components to be in Major Section 220.
2. The steering cylinder is listed in Major Section 220, Sub-section 0120
3. Select the Parts Page Code that applies to the unit Serial number for which parts are needed and locate the Page with reference number.
EXAMPLE - 220-0120.

SERIAL NUMBERS - Each Parts Book covers a particular range of unit Serial Numbers.

It is important that unit Serial Numbers are quoted on all orders for Parts.

PARTS LISTS - Parts Forms usually consist of detailed parts information listed on one page together with a parts illustration on the opposite page. The parts list is printed in the order of the reference numbers shown on the parts illustration. The first column lists Note Letters; the second lists the reference numbers; the third shows quantity required and the fourth gives the parts descriptions. Parts which are part of an assembly have their descriptions indented beneath the assembly description.

ILLUSTRATIONS - These show typical assemblies and individual piece parts. They are intended for general reference only and may not always show exact details of parts. Parts are identified on each illustration with an item number. Note the item number of the part required and locate it in the parts list. The part number opposite the item number is the part to order.

INDENTATIONS - Parts which are indented under another part are Sub-groups of a Major Assembly or Sub-assembly. Parts which are not indented are major assemblies or individual component parts which do not belong to a major assembly.

EXAMPLE - 1 9052564 Pump Assy.
 2 9058512 . Shaft
 3 9024169 . Ring
 4 9058132 . Control Assy.
 5 9058135 . . Spring
 6 9072162 Gasket

- If you order Item 1, you will receive Items 1 - 5.
- If you order Item 4, you will receive Items 4 and 5.
- If you order Item 6, you will receive only Item 6.

NOTES - Whenever there is an alphabetical symbol to the left of the item number, refer to the corresponding note at the bottom of the form for information regarding ordering or application of the particular part number(s) noted.

ABBREVIATIONS - The abbreviations in this book have the following meanings -

Amps	Amperes	Hsg	Housing	N.I	Not Illustrated
As R	As Required	I.D	Inside Diameter	N.L.A	No Longer Available
Assy	Assembly	L.H	Left Hand	N.S.S	Not Sold Separately
Brkt	Bracket	L.W	Lockwasher	O.D	Outside Diameter
Cad-Pltd	Cadium Plated	Lg	Long	Pr	Pair
Comm	Commencement of production	Lkg	Linkage	P.T.O	Power-Take-Off
E.S.N	Elastic Stop Nut	Mtg	Mounting	R.H	Right Hand
Ftgs	Fittings	N.C	Note Code	Std	Standard



Overhung Scraper



TRACTOR SECTIONS

	CHASSIS	100
--	----------------	------------


	ENGINE	110
--	---------------	------------

	TRANSMISSION	120
--	---------------------	------------

	DRIVELINE	130
--	------------------	------------

	FRONT AXLE	140
--	-------------------	------------

	BRAKE PARTS	165
---	--------------------	------------

	ELECTRICAL SYSTEM	190
--	--------------------------	------------

	FUEL SYSTEM	200
--	--------------------	------------

	COOLING SYSTEM	210
--	-----------------------	------------

	STEERING SYSTEM	220
---	------------------------	------------


	BOWL HYDRAULIC SYSTEM	235
---	------------------------------	------------

	BRAKING SYSTEM	250
---	-----------------------	------------

	AIR SYSTEM-GENERAL	255
---	---------------------------	------------

	CAB	260
---	------------	------------

	DECALS	290
--	---------------	------------

	MISCELLANEOUS	300
---	----------------------	------------

		
---	--	--

		
---	--	--

TABLE OF CONTENTS FOR MODEL

S17E ELEVATING SCRAPER

FROM SERIAL NO S8311001

20/02/02

SECT - PAGE - PLI DESCRIPTION

SECTION 100 CHASSIS

100-0010-8031 CHASSIS R1 04/01
100-0040-8031 HOOD AND MOUNTING R1 02/02
100-0040-8031 HOOD AND MOUNTING 02/02
 100-0070-8031 FENDERS AND MOUNTING R1 04/01
100-0100-8031 RADIATOR GUARD AND MOUNTING R1 02/02
 100-0130-8031 DRAWBAR AND STEERING TRUNNION

SECTION 110 ENGINE

110-0020-8031 ENGINE ORDERING INSTRUCTIONS
 110-0030-8031 ENGINE AND MOUNTING R1 04/01
 110-0050-8031 AIR CLEANER
 110-0060-8031 AIR CLEANER PIPES AND HOSES
 110-0070-8031 EXHAUST AND MOUNTING R1 05/01
110-0070-8031 EXHAUST AND MOUNTING R1 02/02
 110-0100-8031 LUBRICATION LINES
110-0130-8031 POWER TAKEOFF - ENG R1 02/02

SECTION 120 TRANSMISSION

120-0010-8031 TRANSMISSION MOUNTING
120-0020-8031 TRANSMISSION BREAKDOWN R1 02/02
120-0020-8031 TRANSMISSION BREAKDOWN 02/02
 120-0110-8031 OIL LINES-TRANSMISSION
 120-0670-8031 FRONT COVER GROUP
 120-0680-8031 INPUT ASSEMBLY-FRONT COVER
120-0690-8031 MIDSHIP MOUNTING GROUP R1 02/02
 120-0700-8031 CONVERTOR ASSEMBLY
 120-0710-8031 GEAR RATIO GROUP
 120-0720-8031 1ST STAGE SHAFT ASSEMBLY
 120-0730-8031 2ND STAGE SHAFT ASSEMBLY
 120-0740-8031 3RD STAGE SHAFT ASSEMBLY
 120-0750-8031 4TH STAGE SHAFT ASSEMBLY
 120-0760-8031 5TH STAGE SHAFT ASSEMBLY
 120-0770-8031 6TH STAGE SHAFT ASSEMBLY
 120-0780-8031 OUTPUT GROUP
 120-0790-8031 MAIN CASE GROUP
 120-0800-8031 CONTROL VALVE GROUP
 120-0810-8031 CONTROL VALVE ASSEMBLY
 120-0820-8031 YOKE GROUP
 120-0830-8031 CONVERTOR LOCKUP VALVE
 120-0840-8031 CHARGE PUMP GROUP

SECT - PAGE - PLI DESCRIPTION

SECTION 130 DRIVELINE

130-0010-8031 FRONT DRIVELINE R1 02/02
130-0010-8031 FRONT DRIVELINE 02/02
130-0020-8031 REAR DRIVELINE R1 02/02
130-0020-8031 REAR DRIVELINE 02/02

SECTION 140 FRONT AXLE

140-0020-8031 AXLE GROUP-FRONT
 140-0030-8031 PLANETARY GEARING-FRONT
 140-0040-8031 WHEEL, RIM AND TYRE-FRONT R1 08/01
 140-0060-8031 DIFFERENTIAL-FRONT R1 04/01
 140-0100-8031 DIFF-LOCK CONTROLS-FRONT R1 04/01
 140-0110-8031 PUMP ASSEMBLY-FRONT DIFF
 140-0130-8031 FILTER & REGULATOR-FRONT DIFF R1 04/01

SECTION 165 BRAKE PARTS

165-0031-8031 BRAKE PARTS-SCRAPERS
 165-0050-8031 BRAKE GUARDS
 165-0060-8031 SLACK ADJUSTER

SECTION 190 ELECTRICAL SYSTEM

190-0010-8031 TERMINALS
 190-0011-8031 CONNECTORS
 190-0030-8031 CABLES/HARNESSES-CAB
 190-0040-8031 CABLES/HARNESSES-CHASS/ENG
 190-0070-8031 BATTERY AND CABLES R1 04/01
 190-0080-8031 BATTERY MOUNTING
 190-0100-8031 ELECTRICAL LIGHTING SYSTEM
 190-0110-8031 ALTERNATOR
 190-0270-8031 SWITCHES AND SENSORS R2 08/01
190-0300-8031 RADIO CASSETTE AND SPEAKERS R1 02/02

SECTION 200 FUEL SYSTEM

200-0010-8031 FUEL TANK AND MOUNTING R2 02/02
 200-0040-8031 FUEL LINES
 200-0050-8031 ACCELERATOR LINKAGE

SECTION 210 COOLING SYSTEM

210-0010-8031 RADIATOR ASSEMBLY
 210-0020-8031 RADIATOR MOUNTING
 210-0030-8031 RADIATOR PIPING R1 04/01

THIS PAGE IS INTENTIONALLY LEFT BLANK

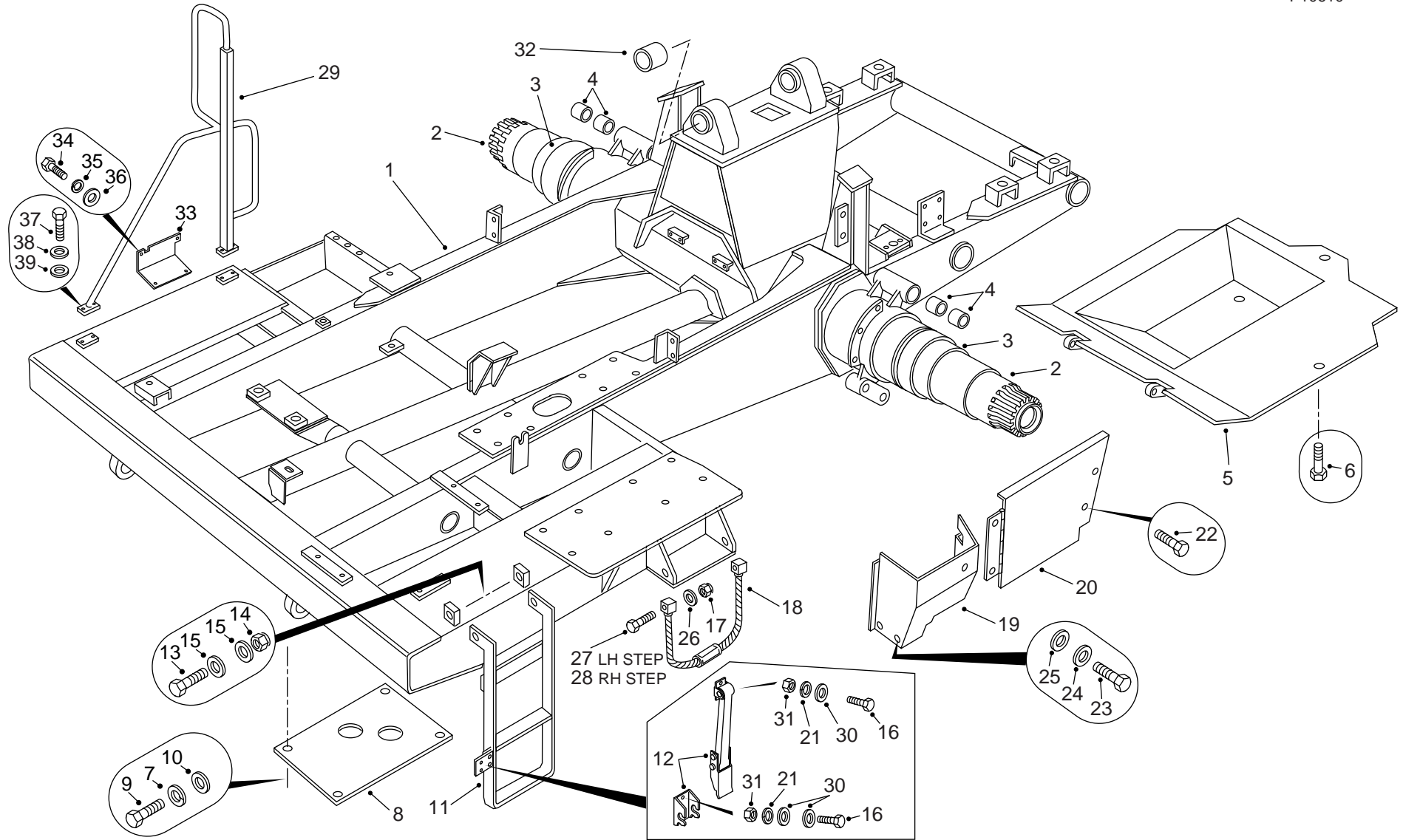
THIS PAGE IS INTENTIONALLY LEFT BLANK

R1 04/01 (ECN 103748)

100-0010-8031 CHASSIS
FROM SERIAL NO. S8311001

DRAWING NO. P10610

P10610



100-0010-8031 CHASSIS
FROM SERIAL NO. S8311001

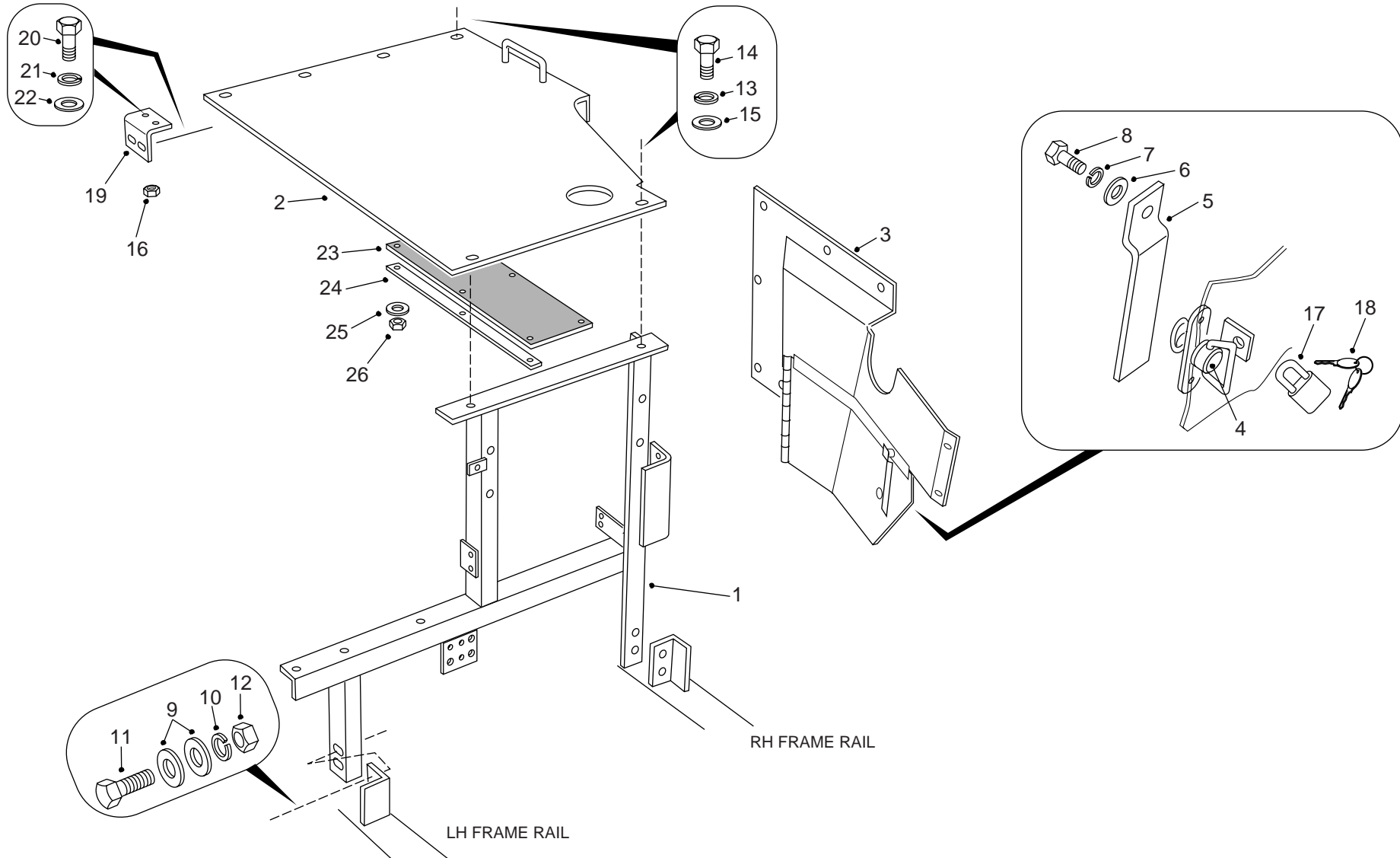
NC	REF	QTY	PART NO.	DESCRIPTION	SER.NO. FROM	SER.NO. TO
001	001		15309279	FRAME ASSY		
002	002		15307769	.SPINDLE ASSY		
003	002		09114572	..BUSHING		
004	004		09102047	..BUSHING		
005	001		15308016	TRANS BELLY GUARD ASSY		
006	003		00179887	BOLT		
007	004		00103329	LOCKWASHER		
008	001		09191426	GUARD-BELLY		
009	004		00179885	BOLT		
010	004		00106265	WASHER		
011	001		15300281	STEP ASSY		
012	001		15005510	LATCH		
013	002		00271615	BOLT		
014	002		09355771	NUT		
015	004		00106268	WASHER		
016	004		06350512	BOLT		
017	004		00274209	LOCKNUT		
018	002		15255698	STEP ASSY		
019	001		15308137	COVER		
020	001		15304612	COVER ASSY		
021	004		07160530	LOCKWASHER		
022	008		00179837	BOLT		
023	002		00179833	BOLT		
024	011		00108580	LOCKWASHER		
025	010		00106263	WASHER		
026	004		09270000	WASHER-HARDENED		
027	002		00179892	BOLT		
028	002		00179894	BOLT		
029	001		15304681	BRACKET-MIRROR MTG RHS		
030	004		07150510	WASHER		
031	004		06430501	NUT		
032	002		09162424	BUSHING		
033	001		15309007	COVER-FUSE BOX		
034	004		00179841	BOLT		
035	004		00108580	LOCKWASHER		
036	004		00106263	WASHER		
037	004		06351230	BOLT		
038	004		07151220	WASHER		
039	004		09270000	WASHER-HDN		

R1 02/02 (ECN 104180)

100-0040-8031 HOOD AND MOUNTING
SERIAL NO. S8311001 TO S8311018

DRAWING NO. P10616

P10616



100-0040-8031 HOOD AND MOUNTING
 SERIAL NO. S8311001 TO S8311018

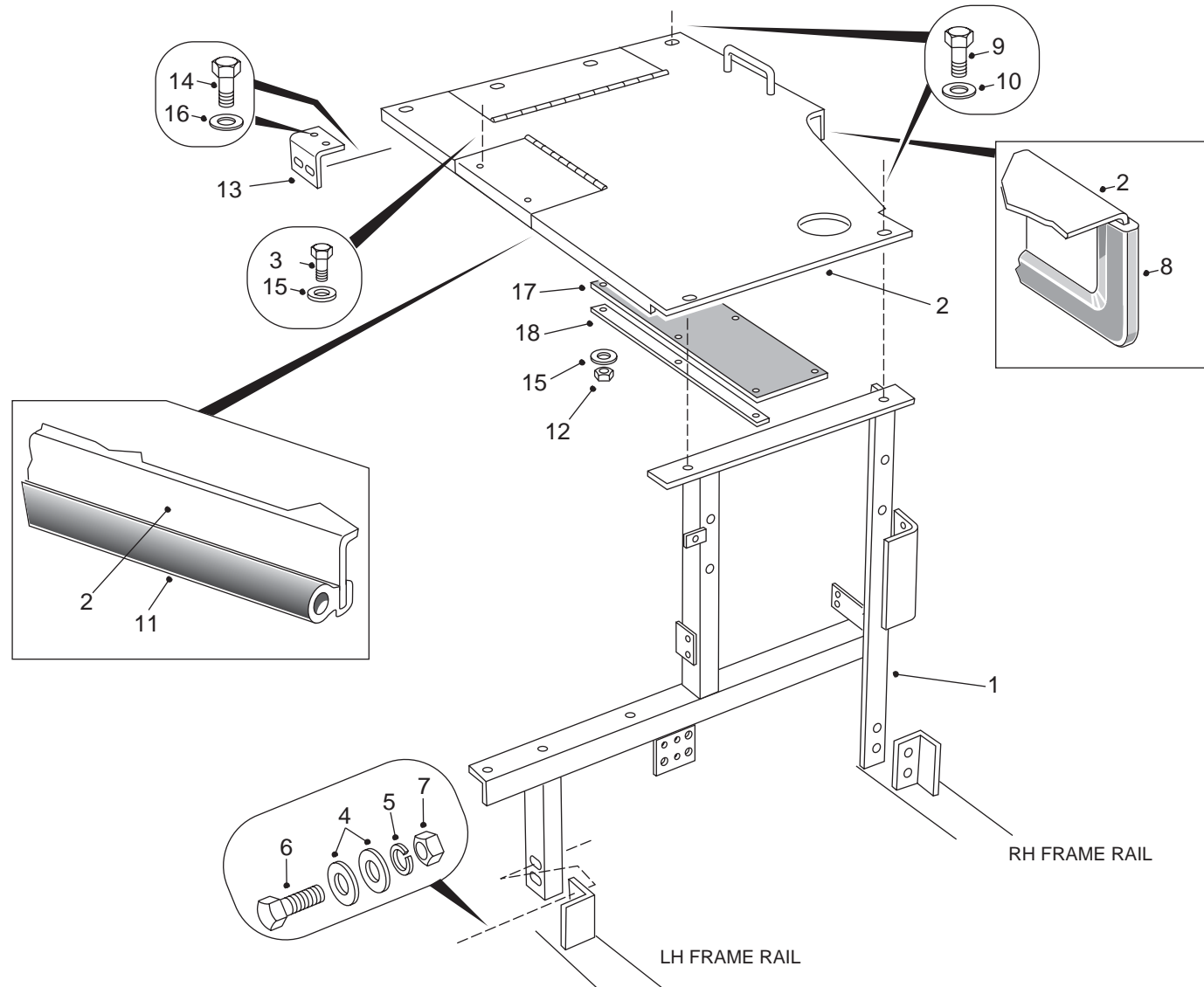
NC	REF	QTY	PART NO.	DESCRIPTION	SER.NO. FROM	SER.NO. TO
001	001		15308944	SUPPORT ASSY		
002	001		15309899	HOOD ASSY		
003	001		15308142	HOODSIDE		
004	001		15006324	.LATCH SPRING		
005	001		15308931	.PLATE-BENT		
006	001		00106263	.WASHER		
007	001		00108580	.LOCKWASHER		
008	001		00179837	.BOLT		
009	008		00106265	WASHER		
010	004		00103329	LOCKWASHER		
011	004		00179887	BOLT		
012	004		00120378	NUT		
013	012		00108580	LOCKWASHER		
014	012		00179839	BOLT		
015	014		15244714	WASHER-HARDENED		
016	002		00102635	NUT		
017	001		09268885	LOCK		
018	002		09268892	.KEY		
019	001		15309175	BRACKET ASSY		
020	004		00179841	BOLT		
021	004		00108580	LOCKWASHER		
022	004		00106263	WASHER		
023	001		15309037	MAT-INSULATION		
024	002		15309038	PLATE-CLAMP		
025	006		00103339	WASHER		
026	006		09354236	LOCKNUT		

02/02 (ECN 104180)

100-0040-8031 HOOD AND MOUNTING
FROM SERIAL NO. S8311019

DRAWING NO. P10940

P10940



100-0040-8031 HOOD AND MOUNTING
 FROM SERIAL NO. S8311019

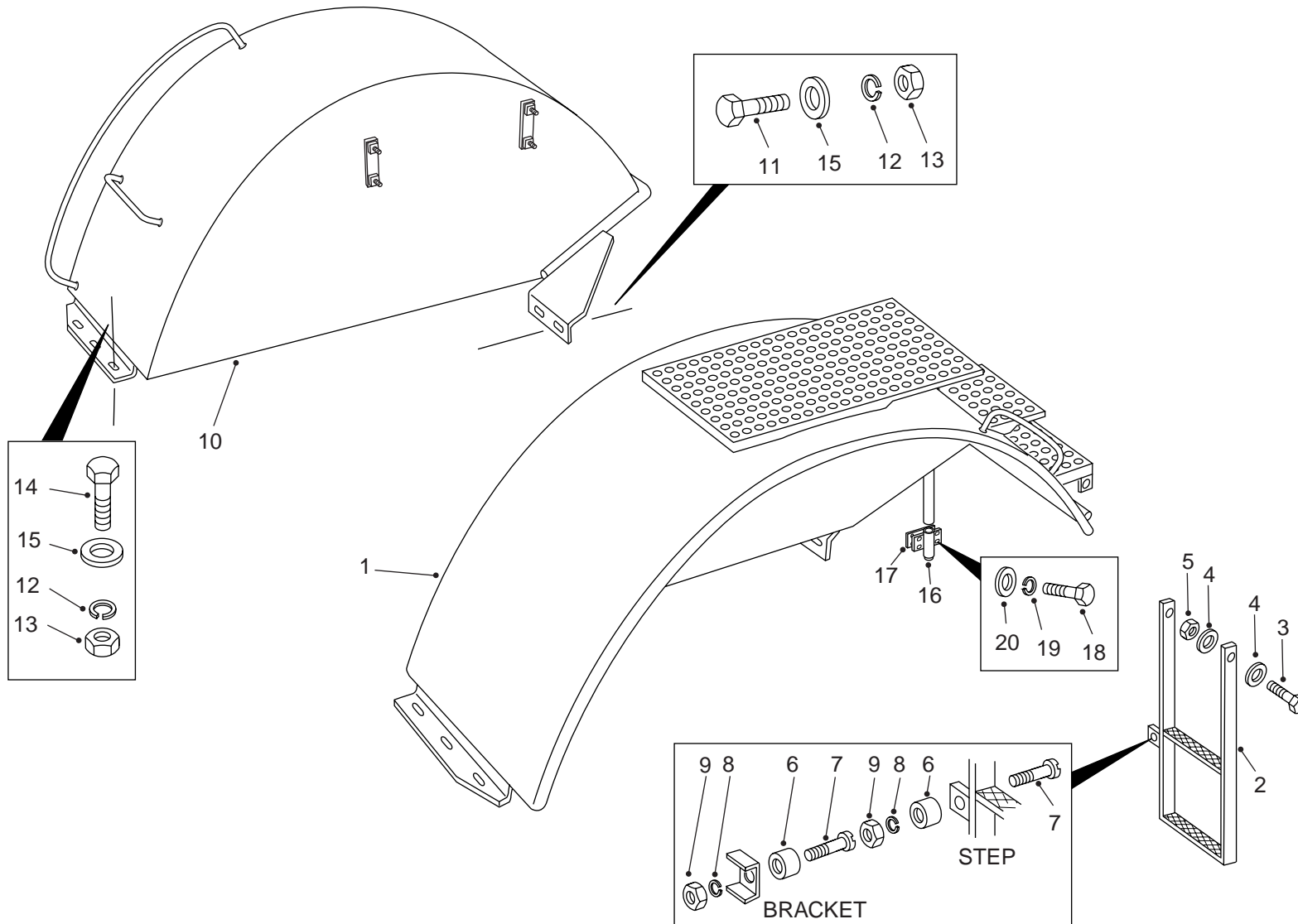
NC	REF	QTY	PART NO.	DESCRIPTION	SER.NO. FROM	SER.NO. TO
001	001		15308944	SUPPORT ASSY		
002	001		15313086	HOOD ASSY		
003	002		00179795	BOLT		
004	008		00106265	WASHER		
005	004		00103329	LOCKWASHER		
006	004		00179887	BOLT		
007	004		00120378	NUT		
008	ASR		09368561	BEADING		
009	007		00179839	BOLT		
010	007		15244714	WASHER-HARDENED		
011	ASR		15017388	SEAL		
012	006		09354236	LOCKNUT		
013	001		15309175	BRACKET ASSY		
014	004		00179838	BOLT		
015	008		00103339	WASHER		
016	004		00106263	WASHER		
017	001		15309037	MAT-INSULATION		
018	002		15309038	PLATE-CLAMP		

R1 04/01 (ECN 103756)

100-0070-8031 FENDERS AND MOUNTING
FROM SERIAL NO. S8311001

DRAWING NO. P10613

P10613



100-0070-8031 FENDERS AND MOUNTING
 FROM SERIAL NO. S8311001

NC	REF	QTY	PART NO.	DESCRIPTION	SER.NO. FROM	SER.NO. TO
001	001		15309532	FENDER ASSY-LH		
002	001		15300804	.STEP ASSY		
003	002		00271612	.BOLT		
004	004		00106268	.WASHER		
005	002		09355771	.NUT		
006	001		15230374	.RETAINER		
007	002		06350620	.SCREW		
008	002		07150615	.LOCKWASHER		
009	002		06430601	.NUT		
010	001		15309088	FENDER ASSY-RH		
011	004		00179887	BOLT		
012	010		00103329	LOCKWASHER		
013	010		00120378	NUT		
014	006		00179885	BOLT		
015	010		09267949	WASHER-HARDENED		
016	001		15309529	BRACKET ASSY		
017	002		15309535	PLATE		
018	004		06351240	BOLT		
019	004		07161230	LOCKWASHER		
020	004		07151220	WASHER		

