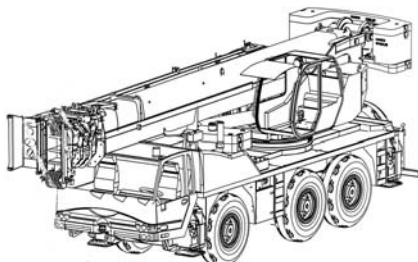


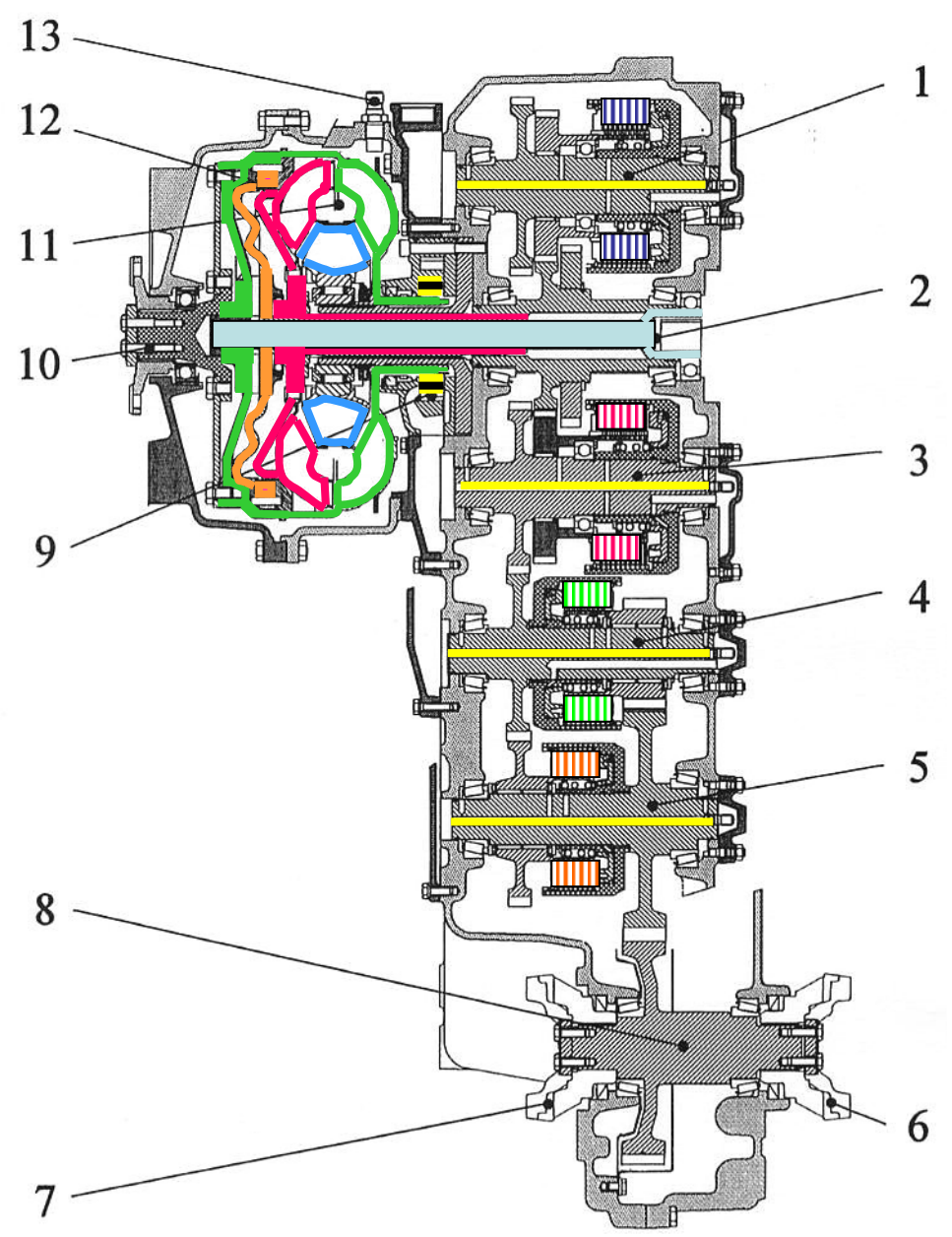
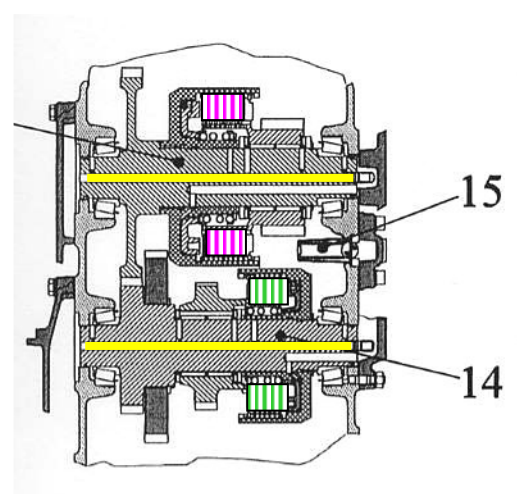
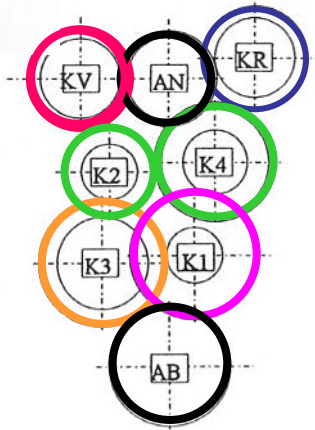


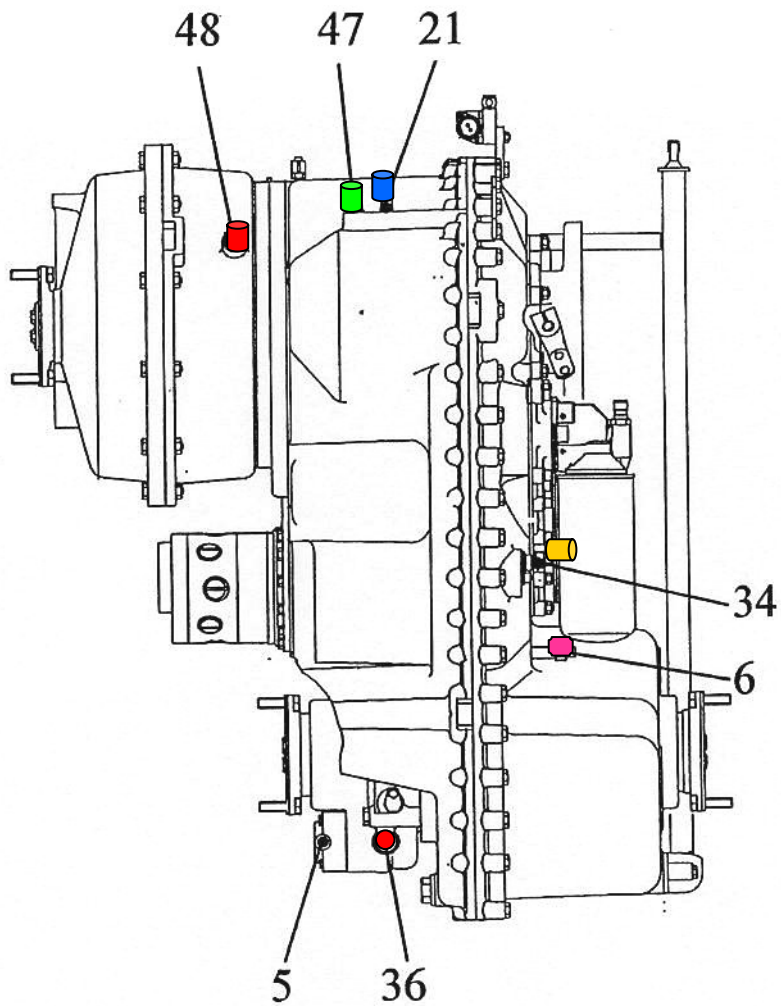
AC35

TRANSMISSION



- 1 = CLUTCH SHAFT „KR“
- 2 = POWER TAKE-OFF, COAXIAL, ENGINE-DEPENDENT
- 3 = CLUTCH SHAFT „KV“
- 4 = CLUTCH SHAFT „K2“
- 5 = CLUTCH SHAFT „K3“
- 6 = OUTPUT FLANGE - REAR SIDE
- 7 = OUTPUT FLANGE - CONVERTER SIDE
- 8 = OUTPUT SHAFT
- 9 = TRANSMISSION PUMP
- 10 = INPUT FLANGE - INPUT THROUGH UNIVERSAL SHAFT
- 11 = CONVERTER
- 12 = WK (CONVERTER CLUTCH)
- 13 = INDUCTIVE TRANSMITTER FOR ENGINE SPEED
- 14 = CLUTCH SHAFT „K4“
- 15 = CONVERTER SAFETY VALVE
- 16 = CLUTCH SHAFT „K1“



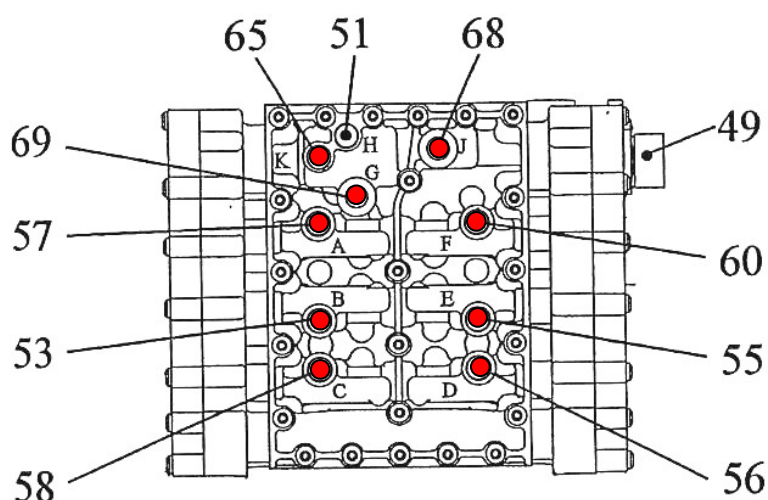


SPEED SENSORS AND PRESSURE SWITCHES

- 48:Engine speed
- 47:Transmission speed
- 36:Front axle pressure switch
- 34:Transmission output
- 21:Turbine speed
- 6:Tachometer

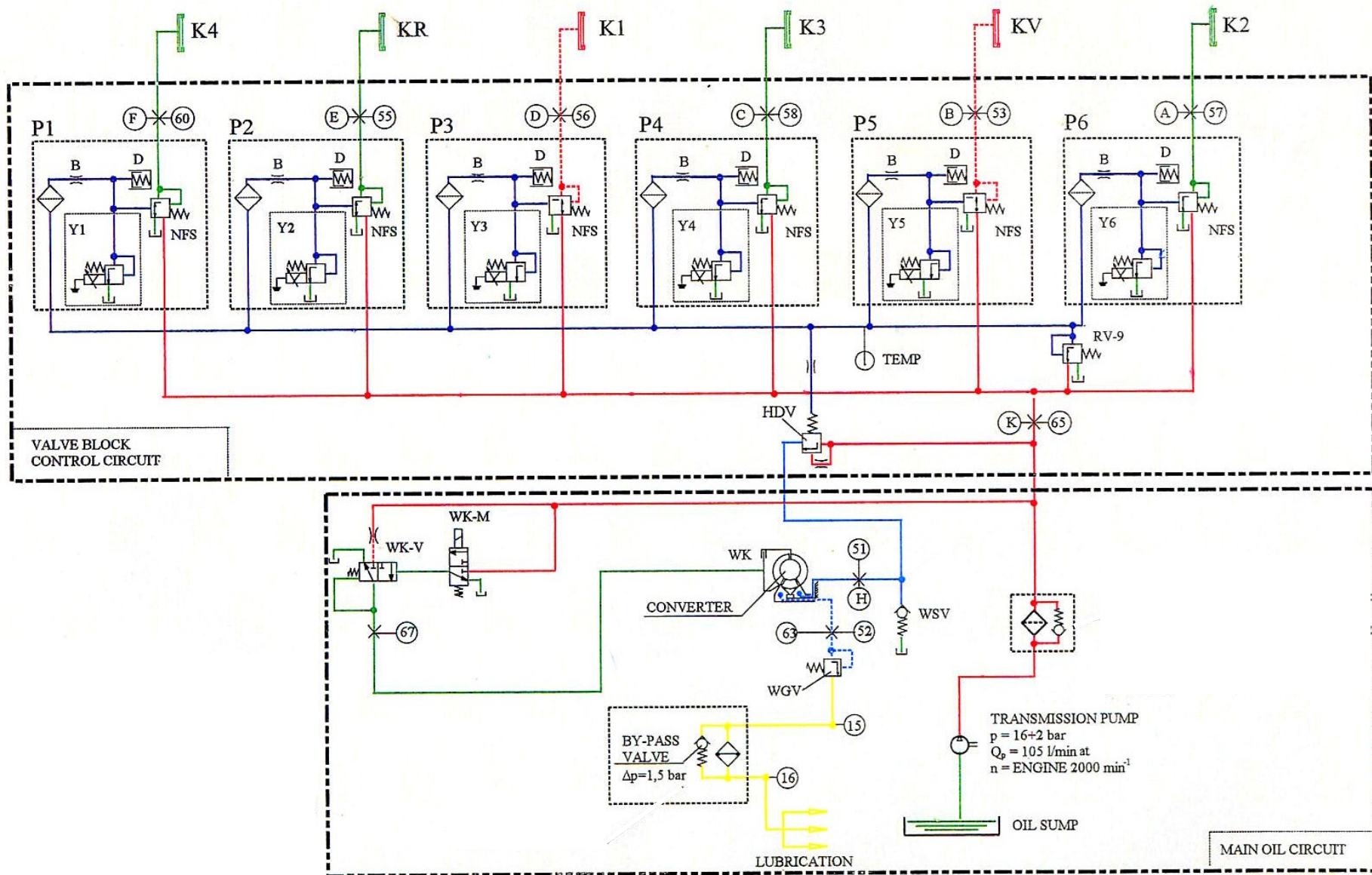
CODING

DRIVING DIRECTION	SPEED	• PRESSURE REGULATOR UNDER VOLTAGE						ENGAGED CLUTCHES	
		Y1	Y2	Y3	Y4	Y5	Y6		
FORWARD	1			•		•		K1	KV
	2	•		•				K4	K1
	3					•	•	KV	K2
	4	•					•	K4	K2
	5				•	•		K3	KV
	6	•				•		K4	K3
REVERSE	1		•	•				KR	K1
	2		•				•	KR	K2
	3		•		•			KR	K3
NEUTRAL									
ENGAGED CLUTCH		K4	KR	K1	K3	KV	K2		
POSITIONS ON THE VALVE BLOCK		F	E	D	C	B	A		
LFD-NO. OF THE MEASURING POINTS		60	55	56	58	53	57		



MEASURING POINTS FOR PRESSURE OIL AND TEMPERATURE:

- 51 = BEFORE THE CONVERTER - OPENING PRESSURE 13bar M10x1
- 52 = BEHIND THE CONVERTER - OPENING PRESSURE 3,5 bar M14x1,5
- 53 = CLUTCH FORWARD 16 +2 bar KV M10x1
- 55 = CLUTCH REVERSE 16 +2 bar KR M10x1
- 56 = CLUTCH 16 +2 bar K1 M10x1
- 57 = CLUTCH 16 +2 bar K2 M10x1
- 58 = CLUTCH 16 +2 bar K3 M10x1
- 60 = CLUTCH 16 +2 bar K4 M10x1
- 63 = BEHIND THE CONVERTER M14x1,5
TEMPERATURE 100° C, SHORT-TIME 120° C
- 65 = SYSTEM PRESSURE 16 +2 bar M10x1
- 67 = WK-CONTROL PRESSURE 13 ± bar M10x1

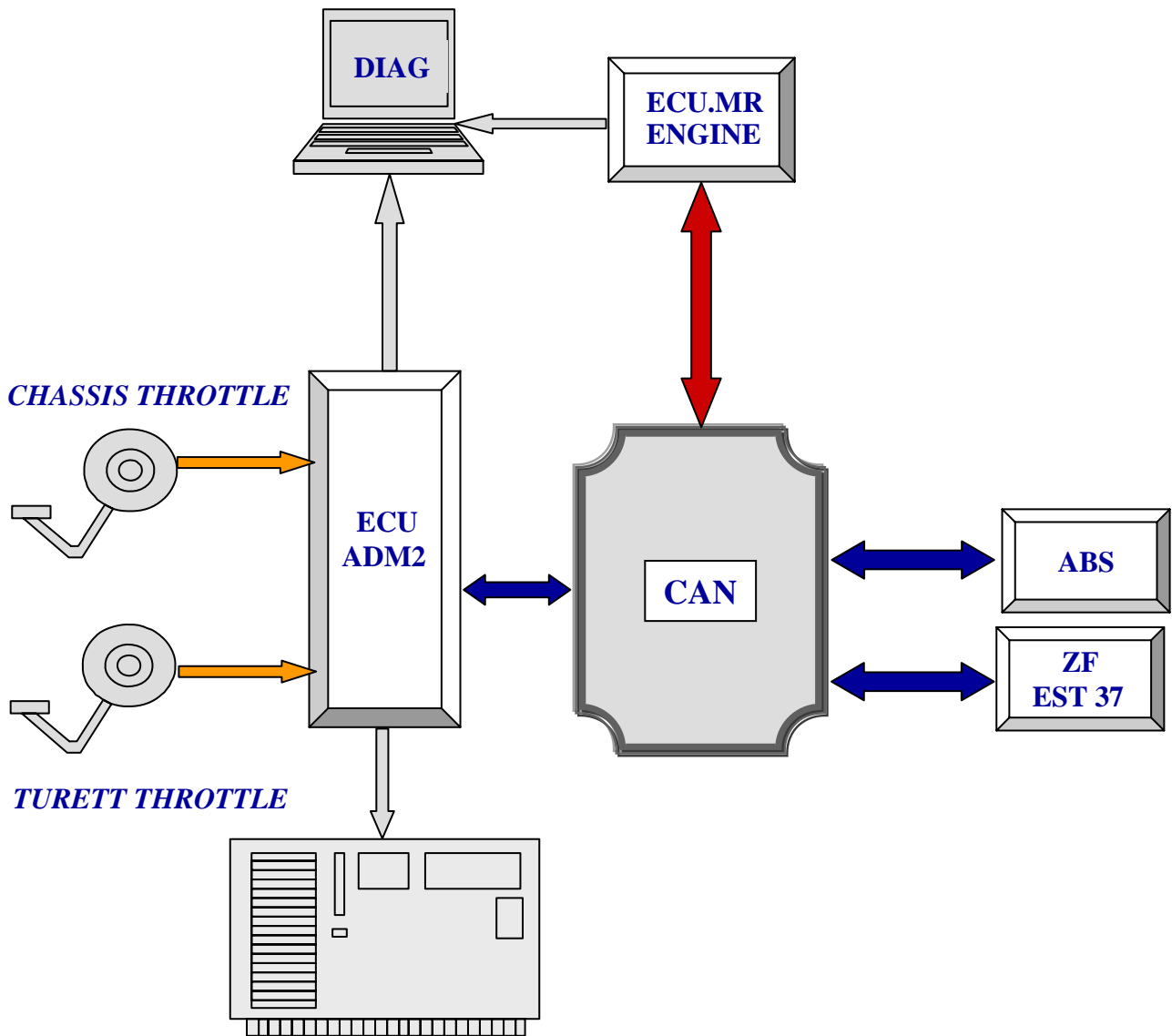


INTERFACE PPM/ZF AC35

				W1-X7
POWER +	(11.1144)	1144 →	1 ↔ 1	800
CHASSIS NEUTRAL	(12.709)	← 709	2 ↔ 2	804
BACK LIGHTS	(17.199)	← 199	3 ↔ 3	808
TURETT NEUTRAL	(34.719)	← 719	4 ↔ 4	812
NOT USED	(12.9293)	← 9293	5 ↔ 5	816
ALL GEARS	(13.9260)	← 9260	7 ↔ 7	824
POWER +	(12.3640)	← 3640	9 ↔ 9	832
POWER +	(12.3640)	← 3640	10 ↔ 10	836
TURETT NEUTRAL	(12.729)	← 729	11 ↔ 11	840
TRANSMISSION FAULT	(12.817)	← 817	12 ↔ 12	844
SPEED > 15KM/H	(12.9210)	← 9210	13 ↔ 13	848
GROUND	(12.15)	← 15	14 ↔ 14	852
GROUND	(12.15)	← 15	15 ↔ 15	856

				W1X3
TURETT SHIFTER	(12.529)	← 529	4 ↔ 4	408
TURETT SHIFTER	(12.1729)	← 1729	5 ↔ 5	412
TURETT SHIFTER	(12.29)	← 29	6 ↔ 6	416

CAN BUS ATT400/3L

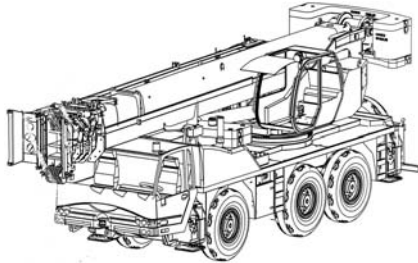


-  **HSC=HIGH SPEED CAN (2 à 3 m longueur max)**
-  **LSC=LOW SPEED CAN (25 m longueur max)**



AC35

HYDRAULIC



ATT400/3 CHASSIS BASIC SCHEMATIC

