



PARTS MANUAL

RT300-1

RT345XL

Revised: November 2011

12261-311

INSTRUCTIONS FOR ORDERING PARTS

When ordering parts, contact your nearest Terex Cranes distributor and give the following information to assure prompt service:

MACHINE IDENTIFICATION:

State the model and serial number, located on the plate in the Operator's Cab.

The final six digits of the serial number are shown on a plate on the outside front of the operator's cab for convenient access.



PART IDENTIFICATION:

State the part number, description and quantity required. Do not use the item number. Avoid using the words "Pairs" or "Sets".

<u>REF.</u>	<u>PART NO.</u>	<u>DESCRIPTION</u>	<u>QTY.</u>
1	707 6594	Gear	1

SHIPPING INSTRUCTIONS:

State the invoicing address. Unless otherwise specified, invoices will be mailed to the shipping address.

State the correct shipping address and the means of shipment: parcel post, air mail, air freight, UPS, bus, etc.

INVOICE TO:
Mid State Equipment
Milwaukee, WI

SHIP TO:
Ace Construction Co.
Madison, WI

USING THIS PARTS BOOK

This Parts Manual has been designed for optimum ease of reading and is the key to Customer-Distributor-Factory communication. Genuine replacement parts, along with interchangeable product improvements as they become available, will keep your machine in a reliable and productive condition.

The following instructions describe the features of the manual and how to use it effectively.

Use this manual also as a supplement to the Operator's Manual and Maintenance Manual when performing service procedures on the machine.



IMPORTANT

This manual lists serviceable parts for **EVERY** machine built of this model designation. Serial numbers are used to identify parts when a product improvement is made or an alternate component is used. **KNOW THE SERIAL NUMBER OF YOUR MACHINE** before searching for replacement parts.

The **PARTS GROUP INDEX** shows the functional arrangement of associated parts for the machine. A group number identifies the same group of parts regardless of model (Group 25 is always the hydraulic system). The groups which apply to the machine are listed in numerical order. A letter suffix to a group number, 25A, is used for variable or optional parts groups.

PAGE NUMBERS are in numerical sequence within each parts group. The first number is the group number and the second number is the numerical sequence number. Letter suffixes are used to maintain continuity to the manual as revisions are incorporated (1.1, 1.2, 1.2A, 1.2B, 1.3, etc.).

EXPLODED VIEW ILLUSTRATIONS show the relationship of assembled parts. The illustrations are keyed to an accompanying parts list on the same page or on the facing page and are positioned for ease in reading the manual.

LOCATING INDIVIDUAL PARTS

1. Turn to the PARTS GROUP INDEX and find the general area of the part in question. (Example: Seat would be found in "Operator's Cab & Machinery Housing" Group 27).
2. Refer to the partsgroup and check to see if a subsequent letter-designated group is used. Check the title block on the pages to determine the application of the group to your particular machine.

111' BOOM	39
------------------	-----------

OFFSETTABLE JIB	39A
------------------------	------------

3. Major assemblies are shown at the beginning of each group with page references to component parts breakdowns on the pages which follow. Briefly skim through the group to familiarize yourself with the information included in it. Locate the illustration and parts list which pertain to the assembly or part you desire. Compare the serial number of your machine to those which may appear on the page to be sure you are ordering the correct part.
4. Item numbers on the illustration correspond to those in the parts list. Parts not shown with an item number are the same as identical or symmetrical parts with an item number. Parts keyed with an asterisk or other symbol are included in a repair kit. If no part number is shown, these parts cannot be ordered separately.
5. Quantities are shown as required per component assembly unless otherwise noted.
6. If an assembly is listed without any serviceable parts, it must be ordered complete. Serviceable parts of components are listed under the component part or a subsequent page as indicated.
7. All hardware shown without the size listed after the noun name is specially made for the particular application and must not be substituted with standard hardware.



TEREX®

PARTS GROUPS

RT300-1 & RT345XL

- 2 CARRIER FRAME, FUEL TANK
 - 2.1) Fender & Deck Assembly
 - 2.3) Frame Machining (RT345XL)
 - 2.4) Under Carriage, Sub Assembly
 - 2.5) Rear Axle Assembly
 - 2.7) Front Axle Assembly
 - 2.8) Fuel Tank
 - 2.9) Hydraulic Axle Lock-Out
 - 2.11) Axle Lock-Out Cylinder
 - 2.12) Pintle Hook
- 3 OUTRIGGERS
 - 3.1) Outrigger Assembly
 - 3.2) Outrigger Beam Assembly
 - 3.3) Outrigger Jack Cylinder
 - 3.4) Outrigger Extend Cylinder
 - 3.5) Outrigger Valve (Selector)
 - 3.6) Outrigger Pads
 - 3.7) Frame With Outriggers (RT345XL)
 - 3.8) Outrigger Beam Assembly
 - 3.9) Outrigger Sensor Installation (RT300-1)
 - 3.11) Sensor Mount Assy (RT300-1)
- 5 WHEELS
 - 5.1) Wheels & Tires
- 6 ENGINE (CUMMINS)
 - 6.1) Engine Installation (Cummins)
 - 6.2) Engine Installation (Cummins)
 - 6.3) Engine Installation (Cummins)
 - 6.4) Engine Installation (Cummins)
 - 6.5) Engine Installation (Cummins)
 - 6.6) Engine Installation (Cooling Assembly)
- 7 TRANSMISSION
 - 7.1) Transmission (Dana)
 - 7.2) Transmission (Converter Group)
 - 7.4) Transmission (Converter & Transmission Case)
 - 7.6) Transmission (R, 3rd, F & 2nd Clutch) Group
 - 7.8) Transmission (Low 1st Clutch Group)
 - 7.10) Transmission (Pressure Valve, Pump & Oil Filter)
 - 7.12) Transmission (Control Valve Assembly)
 - 7.13) Transmission (Hi & Low Shift Control Assembly)
 - 7.14) Transmission (Pump Adapter)
 - 7.15) Transmission (Pump Disconnect)
 - 7.16) Transmission (Drive Plate Group)
- 9 DRIVE SHAFTS
 - 9.1) Drive Shafts
- 10 BRAKES
 - 10.1) Brake Line System
 - 10.4) Air Supply Assembly
 - 10.6) Air Brake Kit
- 11 STEERING
 - 11.1) Steering System
 - 11.2) Steering Control Unit
 - 11.3) Steering Cylinder
 - 11.4) Steering Valve
- 12 SUPERSTRUCTURE
 - 12.1) Superstructure
 - 12.3) Swing Bearing
 - 12.4) Swing Gear Dust Cover
- 13 COUNTERWEIGHT
 - 13.1) Counterweight (8900# / 10000# FAB.) (RT300-1)
 - 13.2) Counterweight (13000# / 119000# FAB.) (RT345XL)
- 22 SWING SYSTEM
 - 22.1) Swing Drive (Braden)
 - 22.2) Swing Reduction Unit (Braden)
 - 22.3) Swing Motor (Eaton)
- 24 PUMPS
 - 24.1) Hydraulic Pumps
 - 24.2) Hydraulic Pump (Attachment & Swing)
 - 24.3) Hydraulic Pump (Swing, Steering & Outriggers)

**TEREX®**

PARTS GROUPS

RT300-1 & RT345XL

- 25 HYDRAULIC SYSTEM
 - 25.1) Hydraulic Reservoir
 - 25.2) Lower Hydraulics
 - 25.5) Lower Hydraulics (Hydraulic Reservoir)
 - 25.6) Lower Hydraulics (Outrigger Valves)
 - 25.7) Lower Hydraulics (Diverter Valve)
 - 25.8) Lower Hydraulics
 - 25.10) Center Swivel Assembly
 - 25.12) Swivel Assembly (Option)(RT300-1)
 - 25.14) Rotary Manifold
 - 25.15) Upper Hydraulics (Boom & Winch Valve Plumbing)
 - 25.17) Upper Hydraulics (Relief Valve)
 - 25.18) Upper Hydraulics (Steer Plumbing)
 - 25.19) Upper Hydraulics (Swing Drive Plumbing)
 - 25.20) Upper Hydraulics
 - 25.22) Upper Hydraulics (Hoist Cylinder Plumbing)
 - 25.24) Upper Hydraulics (Winch & Winch Valve Plumbing)
 - 25.26) Upper Hydraulics (Boom Cylinder Plumbing)
 - 25.27) Boom Valve
 - 25.28) Winch Valve
- 27 OPERATOR'S CAB & MACHINERY HOUSING
 - 27.1) Operator's Cab
 - 27.4) Operator's Cab
 - 27.5) Operators Cab
 - 27.6) Operators Cab
 - 27.7) Operators Cab
 - 27.8) Wipers (Crane)
 - 27.9) Wipers (Crane)
 - 27.10) Operator's Cab (Front Windshield)
 - 27.11) Operator's Cab (Roof Hatch)
 - 27.12) Operator's Cab (Door)
 - 27.13) Crane Cab (Cableway Assembly)
 - 27.14) Operator's Seat
 - 27.15) Engine Housing
- 28 OPERATOR'S CONTROLS
 - 28.1) Directional Signal Control
 - 28.2) Transmission Shifter Control
 - 28.3) Swing Brake Control
 - 28.5) 360° House Lock
 - 28.6) Boom Angle Indicator
 - 28.7) Cab Throttle Control
 - 28.9) Arm Module Assemblies
 - 28.10) Right Arm Assembly Single Axis
 - 28.11) Left Arm Assembly Single Axis
 - 28.12) Right Arm Assembly Double-Axis
 - 28.13) Left Arm Assembly Double-Axis
 - 28.14) Boom Control
 - 28.15) Control Module
- 30 MARKING
 - 30.1) Marking Decals (RT300-1)
 - 30.3) Marking Decals
 - 30.4) Marking Decals (Boom)
 - 30.5) Marking Decals (RT345XL)
- 31 HEATER / AC
 - 31.1) A/C & Heater Options (RT300-1)
 - 31.2) Hydraulic A/C & L.P Heater (Option 1) (RT 300-1)
 - 31.5) Hoses & Mounting Kit (RT300-1)
 - 31.7) Hose ASSY. EVAP. COMP (Option 1) (RT300-1)
 - 31.8) Hose ASSY. Drier to EVAP (Option 1) (RT300-1)
 - 31.9) Hose ASSY - 6 HYD Case Drain (Option 1) (RT300-1)
 - 31.10) Kit, MD 9037/47/57 MTG (Option 1)(RT300-1)
 - 31.11) Suburban Assembly Heater (Option 2) (RT300-1)
 - 31.13) No Heater-Includes Cover (Option 3) (RT300-1)
 - 31.14) Deluxe A/C & Flameless Heat (Option 4) (RT300-1)
 - 31.15) Kit, CAB ASSY (Option 4) (RT300-1)
 - 31.16) Hydraulic Drive Unit (Option 4) (RT300-1)
 - 31.19) Hose & Drive MTG KIT (Option 4) (RT300-1)
 - 31.20) Thermostat Assembly
- 33 ELECTRICAL SYSTEM
 - 33.1) Dash Assembly
 - 33.3) Battery Assembly
 - 33.5) Slip Ring, 51 Circuit
 - 33.6) Slip Ring, 53 Circuit W/Air
 - 33.10) Circuit Breaker
 - 33.11) Electrical System (Lights & Relay Panel)(RT300-1)
 - 33.14) Axle Centering Light Assembly
 - 33.15) Optional Lights
 - 33.16) Optional Lights
 - 33.18) Wire Harnesses
 - 33.19) Schematic Lower (RT300-1)
 - 33.22) Schematic Upper (RT300-1)

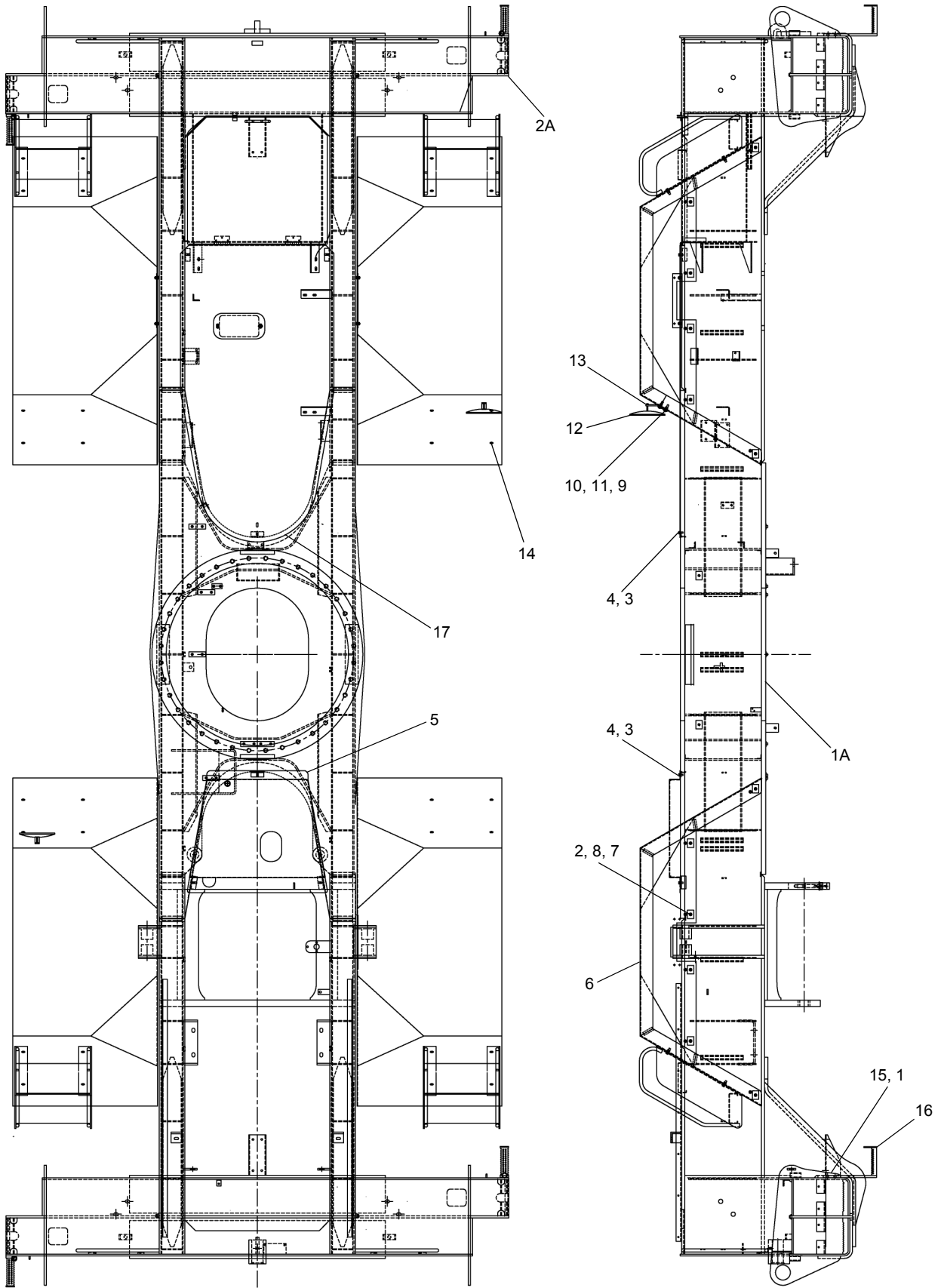


TEREX®

PARTS GROUPS

RT300-1 & RT345XL

- 39 HYDRAULIC TELESCOPING BOOM
 - 39.1) 94' Boom (RT300-1)
 - 39.7) 94' Boom, Extend Cylinder (RT300-1)
 - 39.8) 94' Boom, Extend Cylinder (RT300-1)
 - 39.9) 94' Boom, Extend Cylinder (RT300-1)
 - 39.10) 94' Boom, Hoist Cylinder (RT300-1)
 - 39.11) 94' Boom, Hoist Cylinder (RT300-1)
 - 39.12) 94' & 105' Boom, Hold Valve
 - 39.13) 105' Boom (RT345XL)
 - 39.19) 105' Boom, Extend Cylinder (RT345XL)
 - 39.20) 105' Boom, Hoist Cylinder (RT345XL)
 - 39.21) 105' Boom, Hoist Cylinder (RT345XL)
- 9A JIBS
 - 39A.1) Jib Stowage Assembly
 - 39A.3) Side-Stow Offsettable Jib 32'
 - 39A.4) Side-Stow Offsettable Jib 32'-49'
 - 39A.5) Anti-Two Block (Jib)
- 40 HYDRAULIC WINCH
 - 40.1) Winch Valve
 - 40.2) Winch Motor
 - 40.3) Winch Cable Roller
 - 40.4) Hydraulic Winch (Braden PD15B)
- 44 HOOK BLOCKS, BALLS
 - 44.1) Hook Block, 3 Sheave / 30 Ton
 - 44.2) Hook Block, 4 Sheave / 30 Ton
 - 44.3) Hook Block, 4 Sheave / 40 Ton
 - 44.4) Overhaul Ball, 240# / 250#
- 45 WIRE ROPE, PENDANTS, REEVING
 - 45.1) Wire Rope & Reeving
- 50 ATTACHMENT OPTIONS
 - 50.1) AUX Winch Assembly (W/Counterweight)
 - 50.2) Auxiliary Boom Head Sheave
 - 50.3) Anti-Two (AUX Sheave)
- 52 RATED CAPACITY INDICATOR
 - 52.1) RCL Assembly, ORPS
 - 52.4) RCI 510 Assembly (RT300-1)
 - 52.7) Greer RCI 510 (Computer)
 - 52.8) Greer RCI 510 RCI Assembly (Option)
 - 52.11) Greer RCI 510 (Computer) (Option)
 - 52.12) Greer RCI 510 (Reel) (Option)
- Option
- 54 FILTERS
 - 54.1) Filters
- 55 RECOMMENDED SPARE PARTS LIST
 - 55.1) Recommended Spare Parts List
- 56 OPTIONAL
 - 56.1) 3RD Wrap Indicator (RT300-1)
 - 56.2) Emergency Shutdown Kit (RT300-1)
 - 56.3) Spark Arrestor Muffler (RT300-1)



SEE PAGE 2.2

WHEN ORDERING PARTS, SPECIFY MODEL NUMBER, SERIAL NUMBER AND DESCRIPTION OF PARTS REQUIRED

 **TEREX**
P/N 12261-311

FENDER & DECK ASSEMBLY

DATE: Revised 09-2010
 MODEL: RT300-1 &
 RT345XL
 PAGE 2.1

GROUP
2

SEE PAGE 2.1

<u>REF</u>	<u>PART NO.</u>	<u>DESCRIPTION</u>	<u>QTY</u>
	723A0019 (Rev C)	<i>Fender And Deck Assembly</i>	
1	1205-67	Nut, Lock	8
2	1209-6	Washer, 1/2 STD	24
3	1200-29	Capscrew, 5/16 X 0.75	6
4	1209-3	Washer, 5/16 STD	6
5	723 0020	Deck, Rear.....	1
6	710A0647	Fender ASSY.....	4
7	1200-95	Capscrew, 1/2 X 1.0	24
8	1210-26	Lockwasher, 1/2 MED	24
9	1200-59	Capscrew, 3/8X1.00	4
10	1205-36	Nut, 3/8	4
11	1210-20	Washer, Lock 3/8.....	4
12	706 9604	Mirror	2
13	709 6374	Bracket	2
14	1222-220	Plug	16
15	1200-100	Capscrew 1/2 X 1.50	8
16	713F0134	Step	4
17	710A0603	Deck, Front ASS'Y.....	1

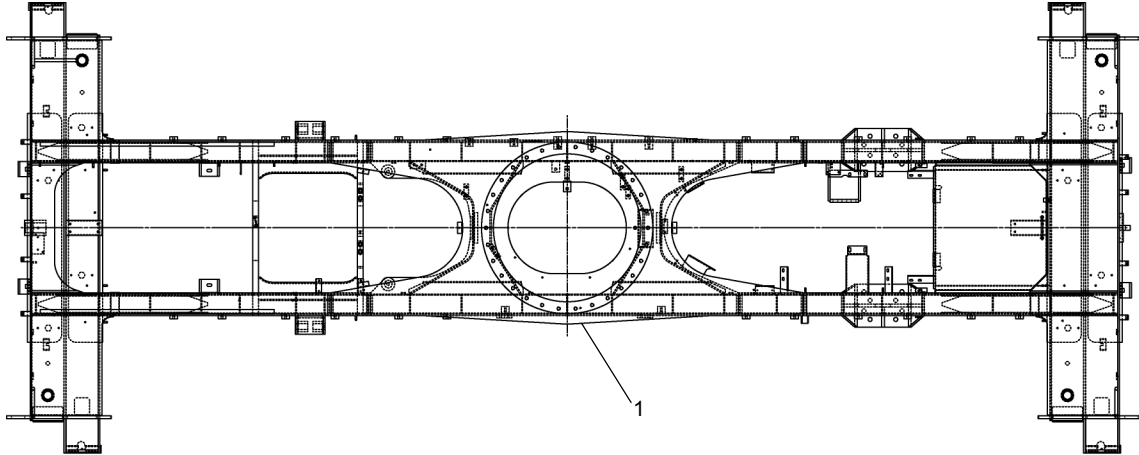
WHEN ORDERING PARTS, SPECIFY MODEL NUMBER, SERIAL NUMBER AND DESCRIPTION OF PARTS REQUIRED



FENDER & DECK ASSEMBLY

DATE: Revised 09-2010
MODEL: RT300-1 & RT345XL
PAGE 2.2

GROUP
2



<u>REF</u>	<u>PART NO.</u>	<u>DESCRIPTION</u>	<u>QTY</u>
	T121006 (Rev A)	Frame, Machining	
1	T121199	Frame Weldment	1

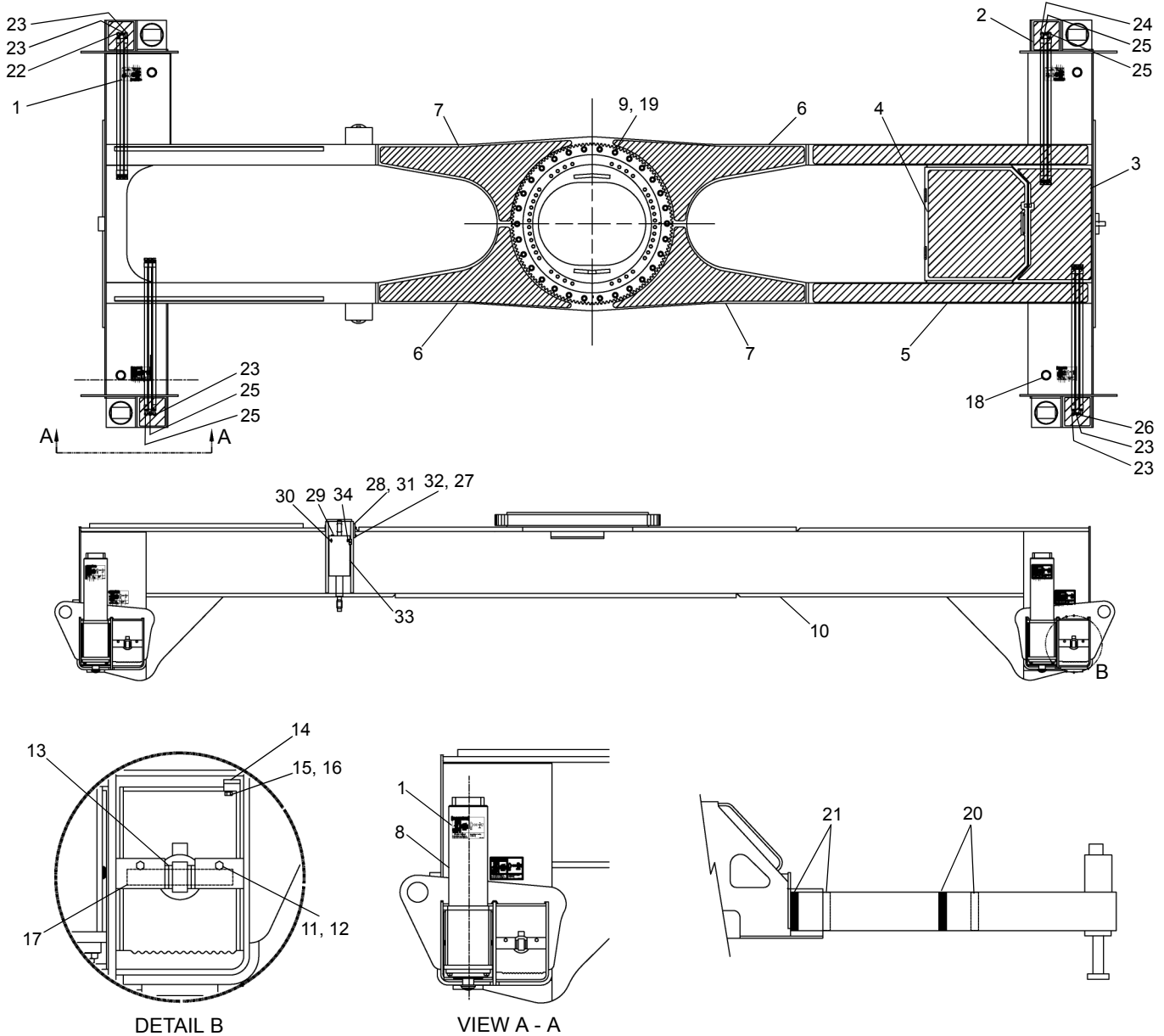
WHEN ORDERING PARTS, SPECIFY MODEL NUMBER, SERIAL NUMBER AND DESCRIPTION OF PARTS REQUIRED



FRAME MACHINING

DATE: Released 10-2011
 MODEL: RT345XL
 PAGE 2.3

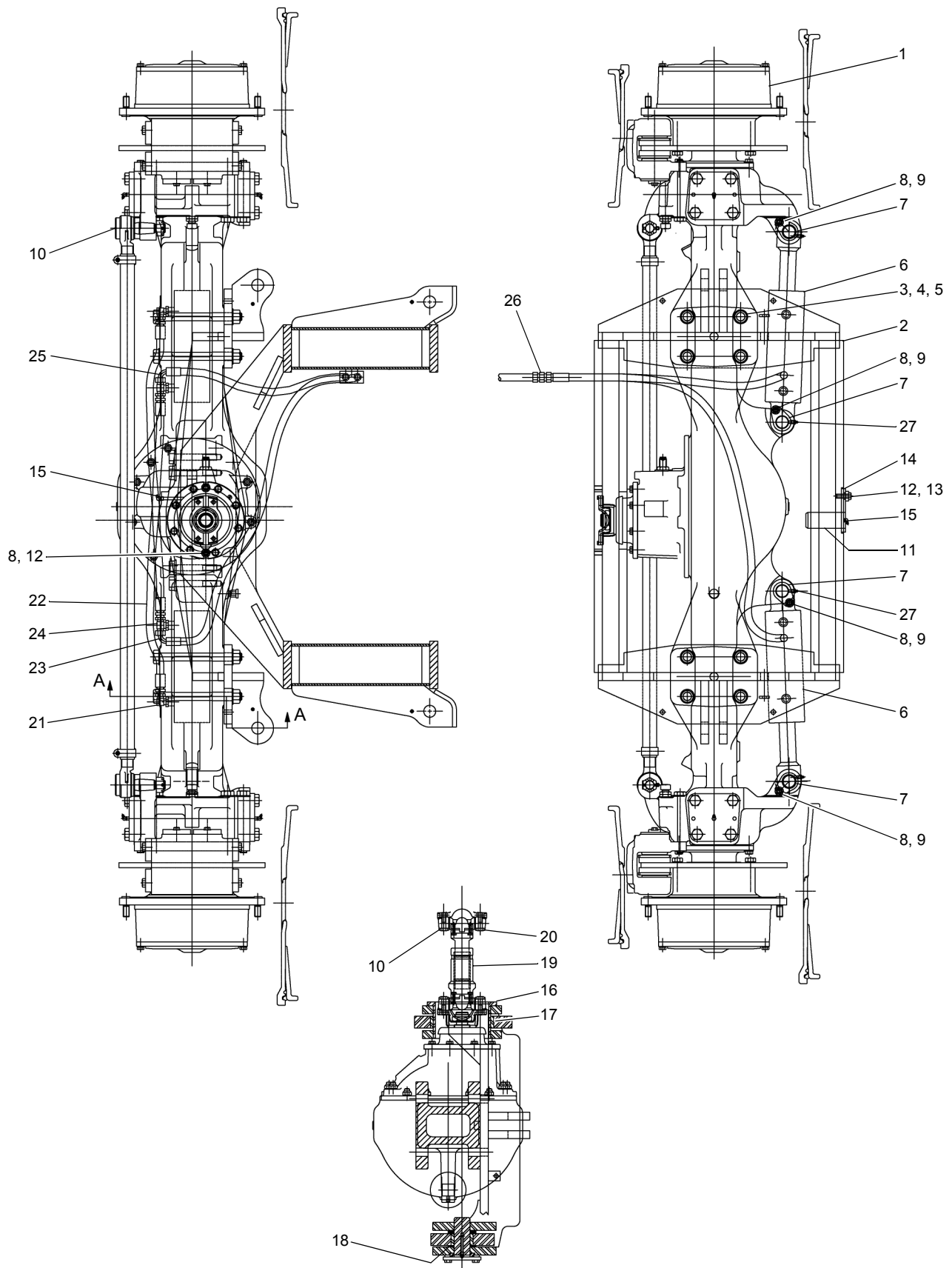
GROUP
2



REF	PART NO.	DESCRIPTION	QTY	REF	PART NO.	DESCRIPTION	QTY.
725A0062 (Rev B) Under Carriage, Sub ASSY							
1	12400-1514	Decal, O/R Crush Hazard	8	18*	723F0083	Pin Weldment & Shoulder Screw	4
2	720 0199	Jack, Anti-Slip Tape	4	19	713 0048	Screw 12-Point 7/8 X 4.5	30
3	710 0221	Front Top, Anti-Slip Tape	1	20	714 0493-1	Stripe, Red	8
4	710 0224	Front Cover, Anti-Slip Tape	1	21	714 0494-1	Stripe, Yellow	8
5	710 0223	Front Rail, Anti-Slip Tape	2	22	707 4078-48	Hose Assembly	1
6	710 0228	Base Plate, Anti-Slip Tape	2	23	707 4078-66	Hose Assembly	5
7	710 0229	Base Plate, Anti-Slip Tape	2	24	707 4079-61	Hose Assembly	1
8	710A0561KIT	Outrigger Beam ASS'Y	4	25	707 4078-62	Hose Assembly	4
9	1209-61	Washer Per B/P Zinc Plate	30	26	707 4079-80	Hose Assembly	1
10	725F0006	Frame, Carrier RT300-1	1	27	1209-4	Washer, Flat 3/8	2
11	1205-34	Locknut HEX 5/16-18 ESNA	8	28	F37562	Pin	2
12	1200-41	HHCS 5/16NC X 2 1/4 GR5 ZIN	8	29	12019-332	Bleed Screw	2
13*	1208-17	Bush MACH 1 X 1 1/2 X 14GA	16	30	362 4004	Plug	2
14	714 0611	Wear Pad	4	31	1213-3	Fitting, Grease	2
15	1210-14	Washer Lock 1/4 MED Zinc	4	32	1200-59	Capscrew 3/8 X 1.00	2
16	1200-3	HHCS 1/4 NC X 1 GR5 Zinc	4	33	707 4952	Cylinder	2
17	706 8587	Pin	4	34	375 1406	Elbow	2

* ITEMS INCLUDED IN 710A0561KIT

WHEN ORDERING PARTS, SPECIFY MODEL NUMBER, SERIAL NUMBER AND DESCRIPTION OF PARTS REQUIRED



SECTION A - A

SEE PAGE 2.6

WHEN ORDERING PARTS, SPECIFY MODEL NUMBER, SERIAL NUMBER AND DESCRIPTION OF PARTS REQUIRED



REAR AXLE ASSEMBLY

DATE: Revised 09-2010
 MODEL: RT300-1 & RT345XL
 PAGE 2.5

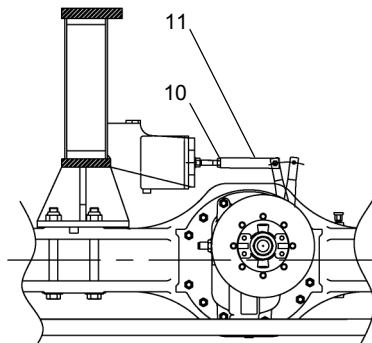
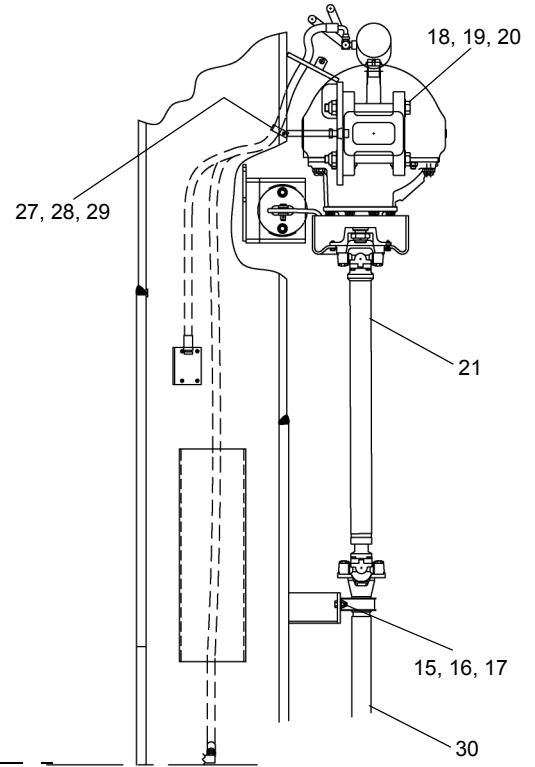
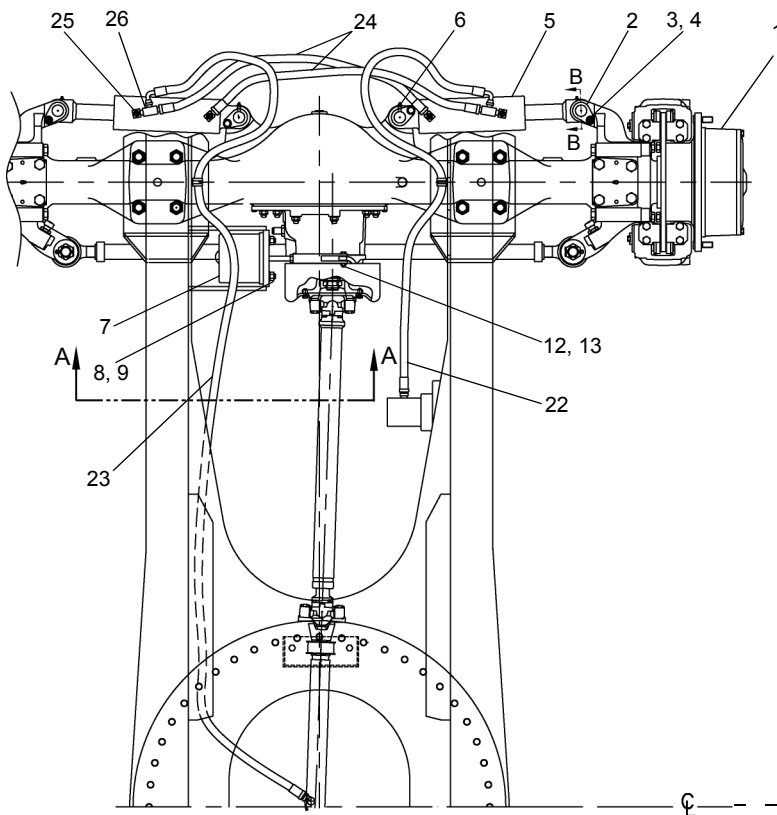
GROUP
2

SEE PAGE 2.5

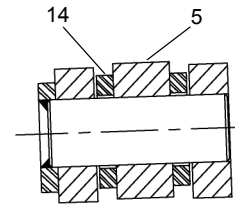
<u>REF</u>	<u>PART NO.</u>	<u>DESCRIPTION</u>	<u>QTY</u>
	710A0405 (Rev E)	<i>Rear Axle Assembly</i>	
1	725 0067	Axle Assembly	1
2	710F0353	Bracket, Axle	1
3	1209-70	Washer, Hard, 1.00	16
4	1203-276	Capscrew, 1.00-8X 10.50	8
5	1205-197	Nut, 1.00-8	8
6	710 0645	Cylinder, Steer	2
7	710F0412	Pin	4
8	1209-29	Washer 0.50	8
9	1200-95	Capscrew 0.50-13X 1.00	4
10	1213-1	Zerk, Straight	2
11	707F4532	Pin, Axle Pivot	1
12	1200-100	Capscrew, 0.50-13X 1.50	4
13	200B0004-103	Spacer	2
14	706 9564	Plate	1
15	1213-3	Zerk , 45	4
16	709 5450	Sleeve	1
17	707 4332	Bushing	1
18	1208-59	Bushing, MACH.	8
19	709 5648	Driveshaft	1
20	310 2860	Capscrew 0.50UNFx2.00 G8	4
21	1219-470	Adapter, 90	2
22	707 4077-40	Hose PER B/P	2
23	707 4078-62	Hose PER B/P	1
24	1219-768	Tee	2
25	707 4078-43	Hose PER B/P	1
26	1219-688	Reducer	2
27	1213-6	Zerk, 90°	2

WHEN ORDERING PARTS, SPECIFY MODEL NUMBER, SERIAL NUMBER AND DESCRIPTION OF PARTS REQUIRED

 TEREX P/N 12261-311	<h3 style="margin: 0;">REAR AXLE ASSEMBLY</h3>	DATE: Revised 09-2010	GROUP 2
		MODEL: RT300-1 & RT345XL	
		PAGE 2.6	



SECTION A - A



SECTION B - B

REF	PART NO.	DESCRIPTION	QTY	REF	PART NO.	DESCRIPTION	QTY
710A0413 (Rev G) Front Axle Assembly							
1	725 0066	Front Axle Assembly	1	16	1209-6	PLN Washer (0.50)	4
2	710F0412	Pin Assembly (STR.CYL).....	4	17	340 2728	Nut, Lock (0.5-13)	2
3	1200-95	Capscrew (1/2-13 X 1)	4	18	1203-276	HHCS 1 - 8 X 10.5	8
4	1209-29	Flat Washer (0.50)	4	19	1209-70	Plain Washer.....	16
5	710 0645	Front STRG. CYL.....	2	20	1205-197	Nut, Lock.....	8
6	1213-1	STRT, Grease FITTG.....	2	21	709 6606	Drive Shaft	1
7	710A0409	Park BRK, Actuator	1	22	707 4078-56	Hose Assembly	1
8	1209-8	Flat Washer (0.625)	2	23	707 4078-122	Hose Assembly	1
9	1205-81	Nut, Elastic Stop.....	2	24	707 4077-40	Hose Assembly.....	2
10	1205-85	Nut, Jam (0.625)	1	25	1219-470	90° Adapter	4
11	710 0410	Yoke	1	26	1219-800	Tee.....	2
12	1200-65	Capscrew (0.375 - 16 X 1.75)	1	27	1240-53	Clamp.....	2
13	1205-45	Nut, Elastic Stop.....	1	28	1209-4	Washer.....	2
14	710 0378	Spacer.....	4	29	1205-43	Lock Nut (0.375-16)	2
15	1200-98	Capscrew (0.5 - 13 X 1.25)	2	30	710A0396	Drive Shaft (Rear).....	1

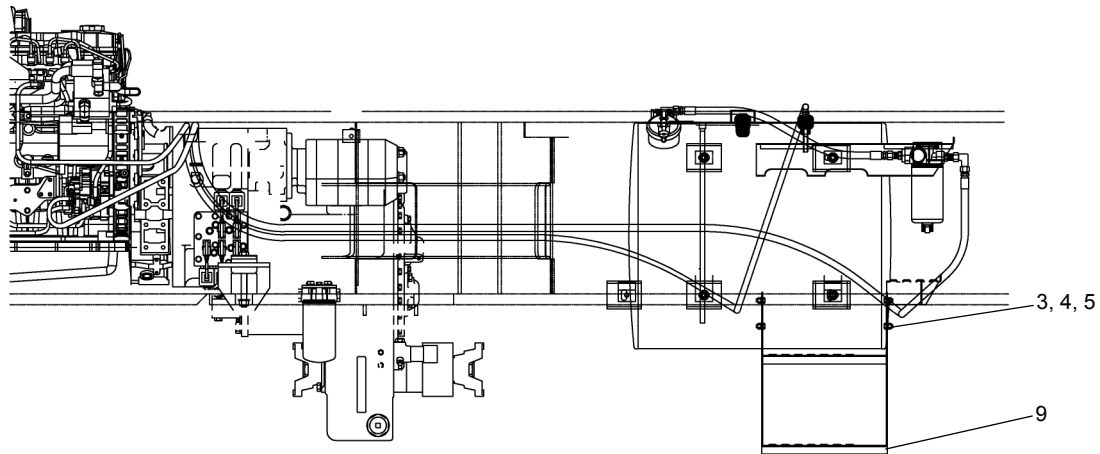
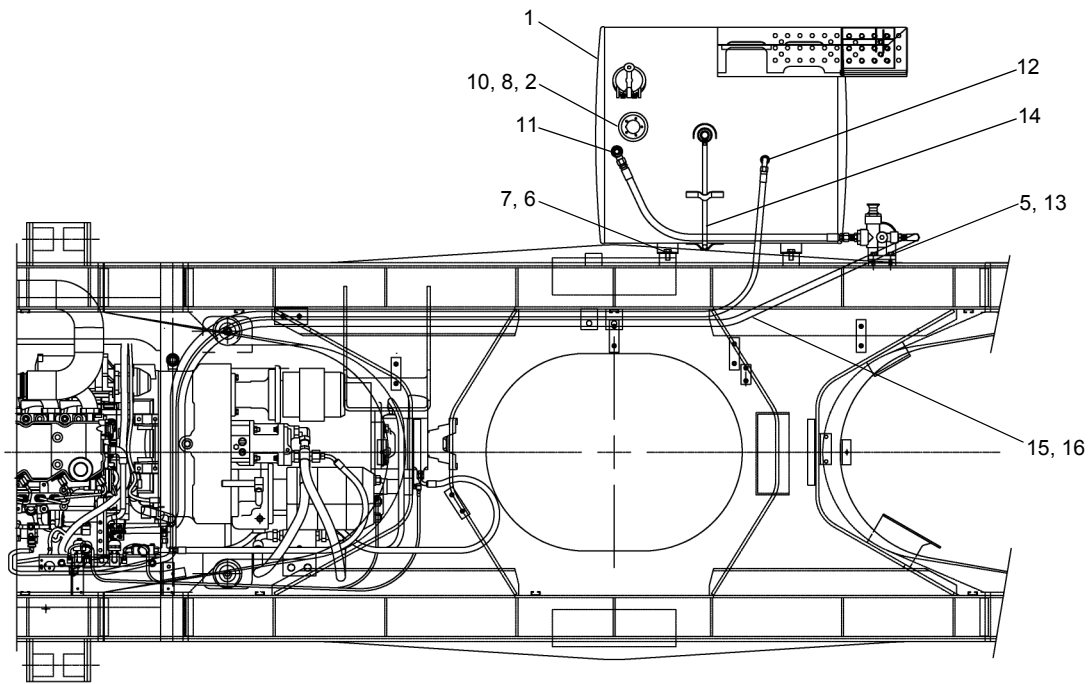
WHEN ORDERING PARTS, SPECIFY MODEL NUMBER, SERIAL NUMBER AND DESCRIPTION OF PARTS REQUIRED



FRONT AXLE ASSEMBLY

DATE: Revised 09-2010
 MODEL: RT300-1 & RT345XL
 PAGE 2.7

GROUP
2



REF	PART NO.	DESCRIPTION	QTY	REF	PART NO.	DESCRIPTION	QTY
713A0147 (Rev 00) Fuel Tank Assembly							
1	723 0104	Fuel Tank 50 Gal	1	9	711F0143	Step, RES/Fuel	1
2	1245-42	Sending Unit	1	10	1239-44	Gasket.....	1
3	1200-57	Capscrew 3/8 X 3/4	4	11	1219-815	Adapter, 8,8.....	1
4	1205-36	Nut 3/8	4	12	1219-775	Adapter, 8-6	1
5	1209-4	Washer, Flat 3/8	6	13	1200-59	Capscrew 3/8 X 1.....	2
6	1200-95	Capscrew 1/2 X 1	4	14	12507-27	Hose.....	1
7	1209-6	Washer, Flat 1/2	4	15	445 2406	Strap.....	2
8	1233-1	Screw Machine	5	16	435 6401-6	Sleeve	1

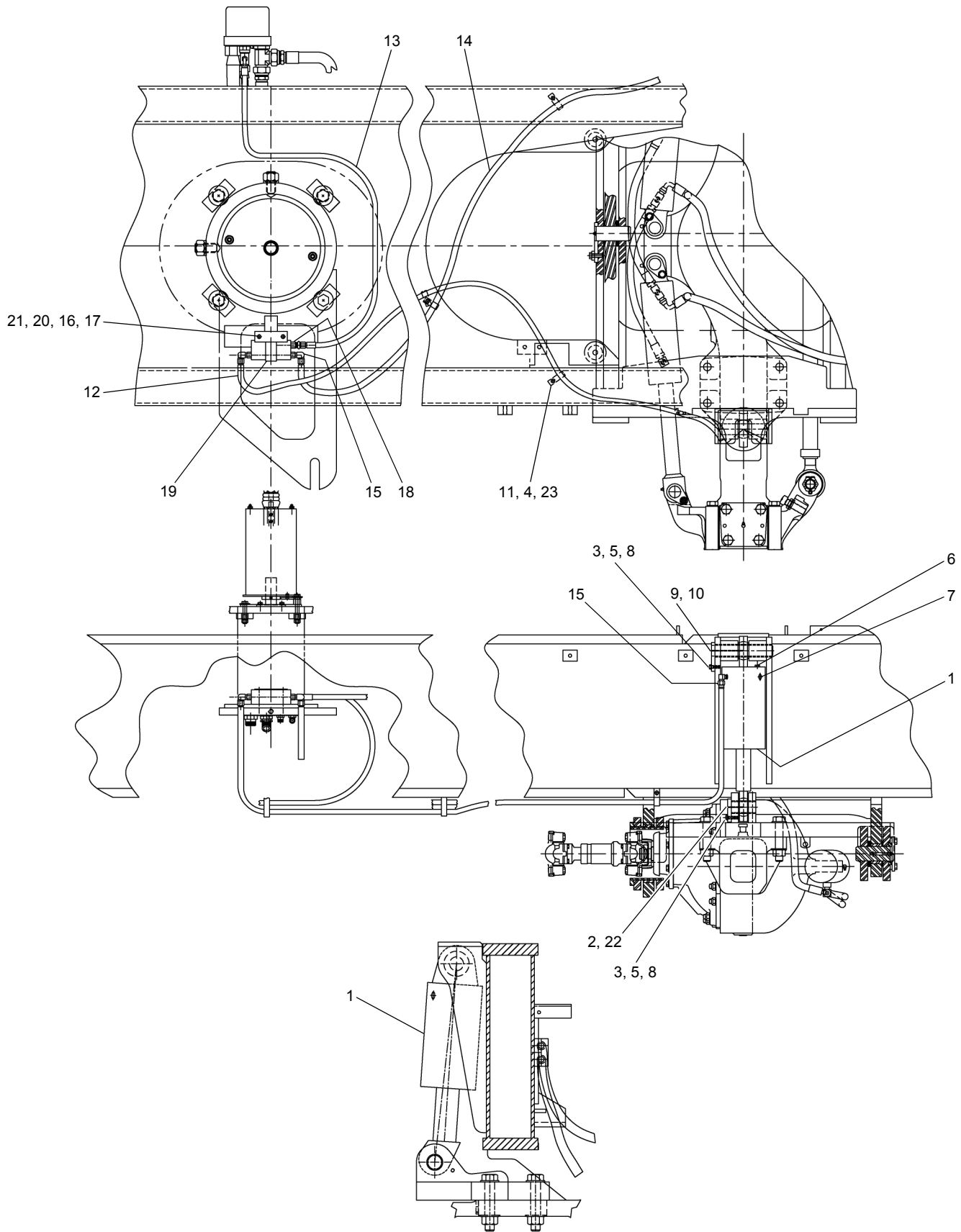
WHEN ORDERING PARTS, SPECIFY MODEL NUMBER, SERIAL NUMBER AND DESCRIPTION OF PARTS REQUIRED



FUEL TANK

DATE: Revised 09-2010
 MODEL: RT300-1 & RT345XL
 PAGE 2.8

GROUP
2



SEE PAGE 2.10

WHEN ORDERING PARTS, SPECIFY MODEL NUMBER, SERIAL NUMBER AND DESCRIPTION OF PARTS REQUIRED



HYDRAULIC AXLE LOCK-OUT

DATE: Revised 09-2010
 MODEL: RT300-1 & RT345XL
 PAGE 2.9

GROUP
2

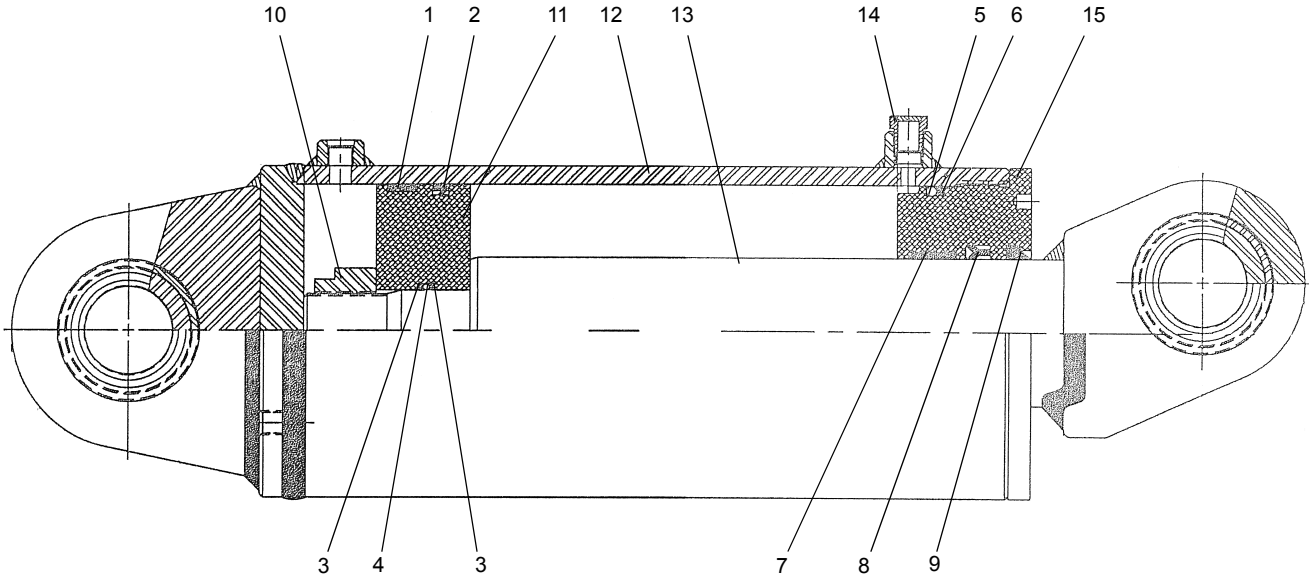
SEE PAGE 2.9

<u>REF</u>	<u>PART NO.</u>	<u>DESCRIPTION</u>	<u>QTY</u>
	709A5963 (Rev H)	<i>Axle Lockout Assembly</i>	
1	707 4952	Cylinder	2
2	708F2844	Pin	2
3	1210-20	Washer, Lock.....	4
4	1205-45	Locknut 3/8"	10
5	1209-4	Flatwasher 3/8"	7
6	12019-332	Bleed Screw	2
7	362 4004	Plug	2
8	1200-59	HHCS 3/8"	4
9	F37562	Pin	2
10	1213-3	Zerk	2
11	200B2007-6	Clamp Support.....	6
12	707 4495-95	Hose	1
13	709 5791-49	Hose	1
14	707 4495-108	Hose	1
15	375 1406	Elbow	4
16	1200-13	HHCS 0.25-20 X 2.25	2
17	707 4783	Strap	1
18	12019-304	Adapter	1
19	430 8844	Valve.....	1
20	1209-44	Washer, Flat	6
21	1210-14	Washer, Lock.....	2
22	1213-1	Zerk	2
23	085 113 24	Washer, Flat	6

WHEN ORDERING PARTS, SPECIFY MODEL NUMBER, SERIAL NUMBER AND DESCRIPTION OF PARTS REQUIRED

 TEREX P/N 12261-311	<h3 style="margin: 0;">HYDRAULIC AXLE LOCK-OUT</h3>	DATE: Revised 09-2010	GROUP 2
		MODEL: RT300-1 & RT345XL	
		PAGE 2.10	

707 4952



REF	PART NO.	DESCRIPTION	QTY
	707 4952 (Rev E)	Cylinder, Axle Lock (Fisher Goldstar)	2
	218917	Kit, Seal..... (Includes Items 10 Through 15)	1
1	218920	Wear Ring.....	1
2	218921	PSP Seal.....	1
3	218922	Back-Up.....	2
4	218923	O-Ring.....	1
5	218924	O-Ring.....	1
6	218925	Back-Up.....	1
7	218926	Wear Ring.....	1
8	218927	U-Cup.....	1
9	218928	Rod Wiper.....	1
10	218929	Locknut.....	1
11	218930	Piston.....	1
12	218931	Barrel Assembly.....	1
13	218932	Rod Assembly.....	1
14	218933	Breather.....	1
15	218934	Internal Head.....	1

WHEN ORDERING PARTS, SPECIFY MODEL NUMBER, SERIAL NUMBER AND DESCRIPTION OF PARTS REQUIRED



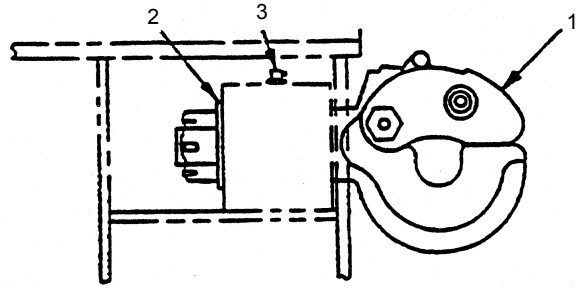
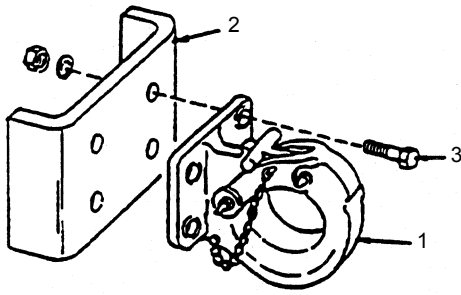
AXLE LOCK-OUT CYLINDER

DATE: Revised 02-2005
 MODEL: RT300-1 & RT345XL
 PAGE 2.11

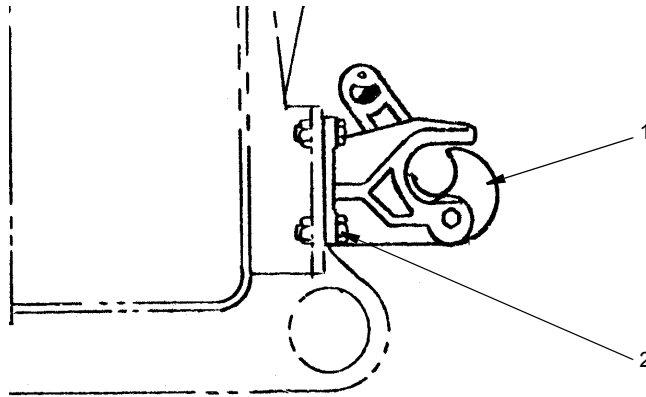
GROUP
2

Terex Cranes Rt300 1 & Rt345xl Parts Manual

Full download: <http://manualplace.com/download/terex-cranes-rt300-1-rt345xl-parts-manual/>



REF	PART NO.	DESCRIPTION	QTY.	REF	PART NO.	DESCRIPTION	QTY.
	60235	Pintle Hook Assembly Opt (Includes Items 1 Through 3)			707A4535	Pintle Hook Assembly Opt (Includes Items 1 Through 3)	
1	41101	Hook, Pintle.....	1	1	707 4536	Hook, Pintle.....	1
2	41110	Bracket.....	1	2	707 4537	Washer.....	1
3	1200-103	Capscrew, 1/2F x 1 3/4	4	3	1213-3	Zerk, Grease.....	1
	1210-26	Lockwasher	4				
	1205-59	Nut, 1/2F x 1.....	4				



REF	PART NO.	DESCRIPTION	QTY.
	3100P57F2	Pintle Hook Assembly..... Opt (Includes Items 1 Through 2)	
1	8Z206	Coupler, Automatic Truck.....	1
2	0825M16065	Capscrew, M16 x 65.....	4
	18Z2070D7	Washer	4
	2104M016	Nut, Hex M16.....	4

WHEN ORDERING PARTS, SPECIFY MODEL NUMBER, SERIAL NUMBER AND DESCRIPTION OF PARTS REQUIRED



PINTLE HOOK

DATE: Revised 02-2005
 MODEL: RT300-1 & RT345XL
 PAGE 2.12

GROUP
2