



PARTS MANUAL

BT4000

12261-286

BT4000 BOOM TRUCKS

Parts Manual

INTRODUCTION

This **TEREX CRANES** Parts manual is supplied to aid you in the location and correct identification of component parts replacement and is based upon **TEREX CRANES** assembly standards at the time of manufacture.

The **TEREX CRANES** parts manual will enable you to maintain your unit according to manufacturer's recommendations. This unit is not to be altered or modified in any way without prior factory approval.

NOTICE

If this boom truck becomes involved in an accident resulting in property damage or personal injury, please contact your local **TEREX CRANES** dealer or the **TEREX CRANES** service department at (319) 352-3920 **IMMEDIATELY**.

All illustrations and specifications contained in this manual are based on the latest product information available at the time of publication. Right is reserved to make changes at any time, without notice, in specifications, material and descriptions.

MADE IN THE U.S.A.

© **TEREX CRANES 2004**

This manual is delivered for the sole purpose of operating and maintaining specific equipment for its intended use and shall not be copied or information contained herein delivered to third parties without prior written approval of **TEREX CRANES**.

 **TEREX CRANES**

Waverly, Iowa

INSTRUCTIONS FOR ORDERING PARTS

When ordering parts, contact your nearest Terex Cranes distributor and give the following information to assure prompt service:

MACHINE IDENTIFICATION:

State the model and serial number, located on a plate on the turret on the driver's side.



PART IDENTIFICATION:

State the part number, description and quantity required. Do not use the item number. Avoid using the words "Pairs" or "Sets".

<u>REF.</u>	<u>PART.NO.</u>	<u>DESCRIPTION</u>	<u>QTY.</u>
1	707 6594	Gear	1

SHIPPING INSTRUCTIONS:

State the invoicing address. Unless otherwise specified, invoices will be mailed to the shipping address.

State the correct shipping address and the means of shipment: parcel post, air mail, air freight, UPS, bus, etc.

INVOICE TO: Mid State Equipment Milwaukee, WI	SHIP TO: Ace Construction Co. Madison, WI
--	--

USING THIS PARTS BOOK

This Parts Manual has been designed for optimum ease of reading and is the key to Customer-Distributor-Factory communication. Genuine replacement parts, along with interchangeable product improvements as they become available, will keep your machine in a reliable and productive condition.

The following instructions describe the features of the manual and how to use it effectively.

Use this manual also as a supplement to the Operator's Manual and Maintenance Manual when performing service procedures on the machine.



IMPORTANT

This manual lists serviceable parts for **EVERY** machine built of this model designation. Serial numbers are used to identify parts when a product improvement is made or an alternate component is used. **KNOW THE SERIAL NUMBER OF YOUR MACHINE** before searching for replacement parts.

The **PARTS GROUP INDEX** shows the functional arrangement of associated parts for the machine. A group number identifies the same group of parts regardless of model (Group 25 is always the hydraulic system). The groups which apply to the machine are listed in numerical order. A letter suffix to a group number, 25A, is used for variable or optional parts groups.

PAGE NUMBERS are in numerical sequence within each parts group. The first number is the group number and the second number is the numerical sequence number. Letter suffixes are used to maintain continuity to the manual as revisions are incorporated (1.1, 1.2, 1.2A, 1.2B, 1.3, etc.).

EXPLODED VIEW ILLUSTRATIONS show the relationship of assembled parts. The illustrations are keyed to an accompanying parts list on the same page or on the facing page and are positioned for ease in reading the manual.



BT4000

PARTS GROUPS

25 HYDRAULIC SYSTEM

- 25.1 HYDRAULIC RESERVOIR ASSEMBLY
- 25.2 HYDRAULIC RESERVOIR INSTALLATION
- 25.3 HYDRAULIC RESERVOIR FILTER INSTALLATION
- 25.4 HYDRAULIC RESERVOIR PIPING
- 25.5 MAIN VALVE BREAKDOWN
- 25.6 MAIN VALVE ASSEMBLY STANDARD WINCH
- 25.7 MAIN VALVE PIPING NON-CONTINUOUS ROTATION
- 25.8 WINCH VALVE ASSEMBLY
- 25.9 HYDRAULIC PIPING NON-CONTINUOUS ROTATION
- 25.10 HYDRAULIC PIPING - SWING
- 25.11 UNLOADER VALVE ASSEMBLY
- 25.12 PRIORITY VALVE

CONTROLS

28 OPERATOR CONTROLS

- 28.1 CONTROL CONSOLE ASSEMBLY
- 28.2 CONTROL CONSOLE ASSEMBLY
- 28.3 CONTROL CONSOLE ASSEMBLY
- 28.4 THROTTLE ASSEMBLY
- 28.5 THROTTLE INSTALLATION

MISCELLANEOUS

29 TOOLS, PAINT, LUBRICANTS

- 29.1 TOOLS / PAINTS
- 29.2 SPLIT FLANGE CLAMPS
- 29.3 CLAMPS

30 DECALS & PLACARDS

- 30.1 MARKING DECAL PLACEMENT
- 30.2 MARKING DECAL PLACEMENT
- 30.3 MARKING DECAL PLACEMENT

ELECTRICAL

33 ELECTRICAL SYSTEM

- 33.1 ELECTRICAL SYSTEM HARNESSSES
- 33.2 ELECTRICAL SYSTEM CONSOLE CONTROLS
- 33.3 ELECTRICAL SYSTEM OUTRIGGER ALARM SWITCH



TEREX

PARTS GROUPS

BT4000

WINCH, BOOM, & ATTACHMENTS

39 HYDRAULIC TELESCOPING BOOMS

- 39.1 BOOM ASSEMBLY - 92' BASE
- 39.2 BOOM ASSEMBLY - 92'
2ND STAGE
- 39.3 BOOM ASSEMBLY - 92'
3RD STAGE
- 39.4 BOOM ASSEMBLY - 92'
4TH STAGE
- 39.5 EXTENSION CYLINDER
ASSEMBLY - 92' BOOM
- 39.6 EXTENSION CYLINDER
- 39.7 EXTENSION TUBE ASSEMBLY
92' BOOM
- 39.8 CABLE GUIDE INSTALLATION
92' BOOM
- 39.9 BOOM INSTALLATION
- 39.10 TOPPING CYLINDER
ASSEMBLY
- 39.11 TOPPING CYLINDER

39A JIB

- 39A.1 JIB ASSEMBLY - SINGLE
STAGE
- 39A.2 JIB ASSEMBLY - TWO STAGE
- 39A.3 JIB STOWAGE

40 HYDRAULIC WINCH

- 40.1 WINCH MOTOR
- 40.2 WINCH ASSEMBLY
- 40.3 WINCH ASSEMBLY
- 40.4 WINCH BRAKE VALVE

44 HOOK BLOCKS, BALLS

- 44.1 HOOK BLOCK - 1 SHEAVE /
17.5 TON
- 44.2 HOOK BLOCK - 2 SHEAVE /
22.5 TON
- 44.3 HOOK BALLS

45 WIRE ROPE AND REEVING

- 45.1 WIRE ROPE AND REEVING



PARTS GROUPS

BT4000

ACCESSORIES

51 OPTIONAL EQUIPMENT

- 51.1 TOOL BOX - INSTALLATION
- 51.2 OIL COOLER INSTALLATION
- 51.3 FRONT BUMPER OUTRIGGER -
INSTALLATION
- 51.4 FRONT BUMPER OUTRIGGER
ASSEMBLY
- 51.5 FRONT BUMPER OUTRIGGER
ASSEMBLY
- 51.6 FRONT BUMPER OUTRIGGER
VALVE
- 51.7 HYDRAULIC PIPING / WIRING -
CONTINUOUS ROTATION
OPTION
- 51.8 HYDRAULIC SWIVEL /
COLLECTOR RING
CONTINUOUS ROTATION
OPTION
- 51.9 MAIN VALVE PIPING -
CONTINUOUS ROTATION
OPTION
- 51.10 WINCH VALVE PIPING -
CONTINUOUS ROTATION
OPTION
- 51.11 MOTOR SHIFT 2 SPEED WINCH
OPTION
- 51.12 MOTOR SHIFT 2 SPEED WINCH
OPTION
- 51.13 1 PERSON STEEL PLATFORM -
ASSEMBLY

- 51.14 SELF LEVELING PLATFORM -
ASSEMBLY
- 51.15 SELF LEVELING PLATFORM -
ASSEMBLY
- 51.16 2 PERSON STEEL PLATFORM -
ASSEMBLY
- 51.17 2 PERSON STEEL PLATFORM -
ASSEMBLY
- 51.18 RADIO REMOTE CONTROL
- 51.19 RADIO REMOTE CONTROL
- 51.20 RADIO REMOTE CONTROL -
THROTTLE INSTALLATION
- 51.21 RADIO REMOTE CONTROL -
RELAY BOX ASSEMBLY
- 51.22 WINCH CABLE TENSIONER -
ASSEMBLY
- 51.23 ROOFER'S PACKAGE
- 51.24 ROOFER'S PACKAGE
- 51.25 ROOFER'S PACKAGE -
INSTALLATION
- 51.26 HYD GROUND TOOL CIRCUIT
- 51.27 AUXILIARY SHEAVE

52 RATED CAPACITY INDICATOR

- 52.1 GREER MG586 RCI/ATB
ASSEMBLY
- 52.2 GREER MG586 COMPUTER
- 52.3 GREER MG586 REEL
- 52.4 GREER MG586 DISPLAY
- 52.5 ANGLE DISPLAY (OPTION)

02 CARRIER FRAME



Truck Chassis

Refer to Truck Chassis manufacturer (Ford, Freightliner, Sterling, etc.) for truck repair/replacement parts.

RECORD VEHICLE/MACHINE INFORMATION BELOW FOR USE WHEN ORDERING PARTS

Truck Chassis Manufacturer _____ Model _____	Comments
Boom Truck Model No. _____ Serial No. _____	Comments
Optional Equipment _____	Comments

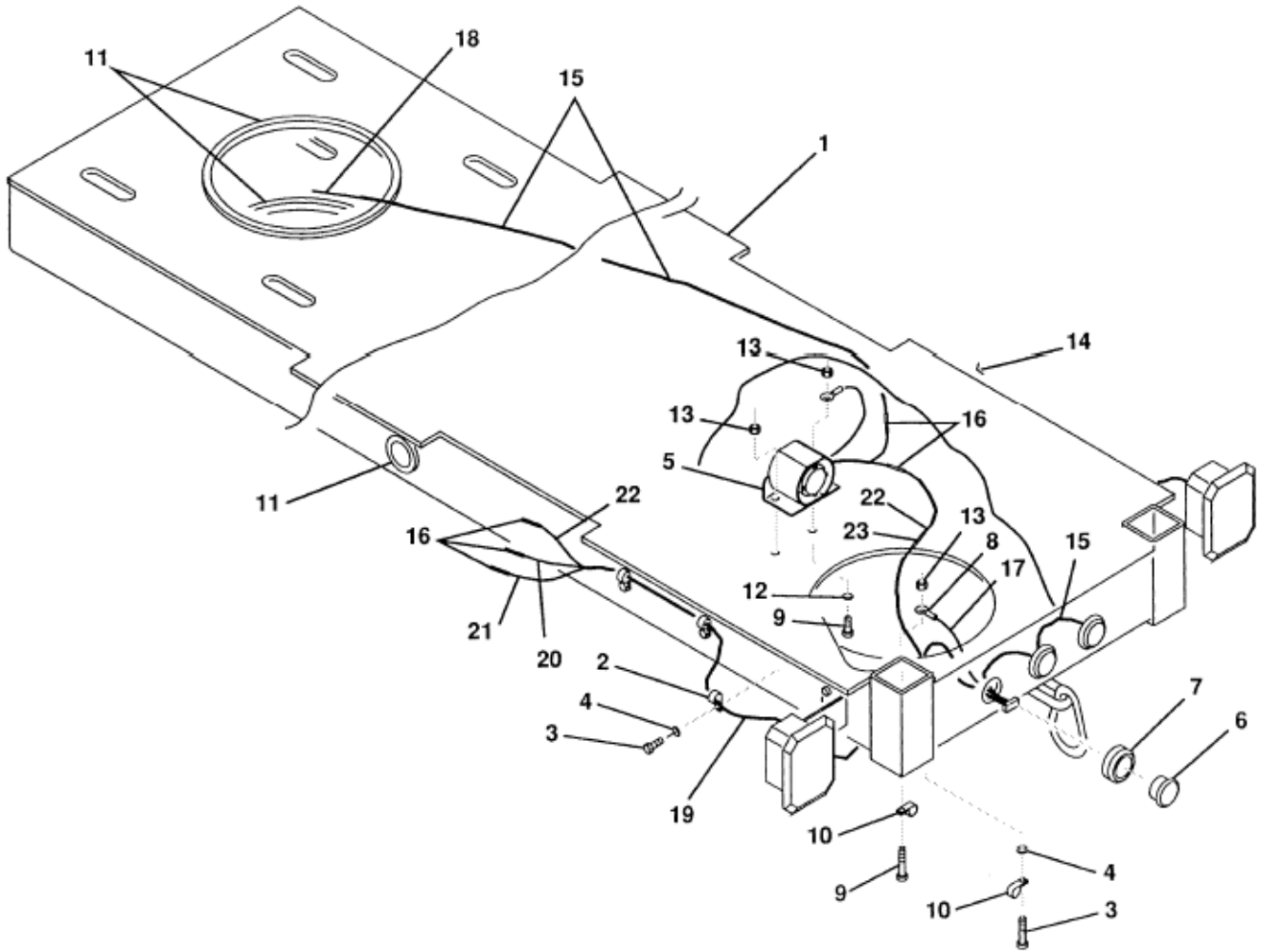
WHEN ORDERING PARTS, SPECIFY MODEL NUMBER, SERIAL NUMBER AND DESCRIPTION OF PARTS REQUIRED



TRUCK CHASSIS

DATE: Revised 03-2006
 MODEL: BT4000
 Page 02.1

**GROUP
 02**



Sub-Frame Installation, Boom Truck (BT)s

REF	PART NO	DESCRIPTION	QTY	REF	PART NO	DESCRIPTION	QTY
1*	Refer to "SUB-FRAME/FLATBED OPTIONS" on page 2.3.			13	221-90001	Nut, HH Top Lock 1/4UNC.....	3
		Sub-Frame - Weldment.....	1	14	400-01375	Wire - 16Ga Green.....	8'
2	201-00142	Clamp - Tube 1/4 x 1/2.....	8	15	400-01411	Loom - Wire 1/4 I.D.....	35"
3	223-15213	Bolt 1/4UNC x 3/4" Long.....	9	16	400-02202	Connector - Terminal Butt.....	1
4	222-10005	Washer - Lock 1/4.....	9	17	400-01248	Harness - Electrical ID Lights.....	1
5	400-05130	Horn - Outrigger & Backup.....	1	18	400-01389	Wire - 16Ga Blue.....	26'
6	400-09094	Light.....	3	19	400-01412	Wire - Loom 3/8 I.D.....	8'
7	400-09291	Grommet.....	3	20	400-01377	Wire - 16Ga Yellow.....	8'
8	400-02298	Ring - Terminal 1/4.....	2	21	400-01378	Wire - 16Ga Black.....	8'
9	220-00003	Bolt 1/4UNC x 3/4" Long.....	3	22	400-01374	Wire - 16Ga Brown.....	11'
10	201-00141	Clamp 1/4 x 5/16.....	2	23	400-02226	Connector, Terminal Butt.....	1
11	209-00174	Trim - Seal.....	10'				
12	222-00006	Washer - Flat 1/4.....	2				

Refer to "SUB-FRAME/FLATBED OPTIONS" on page 2.3, or consult dealer for various sub-frames.

WHEN ORDERING PARTS, SPECIFY MODEL NUMBER, SERIAL NUMBER AND DESCRIPTION OF PARTS REQUIRED



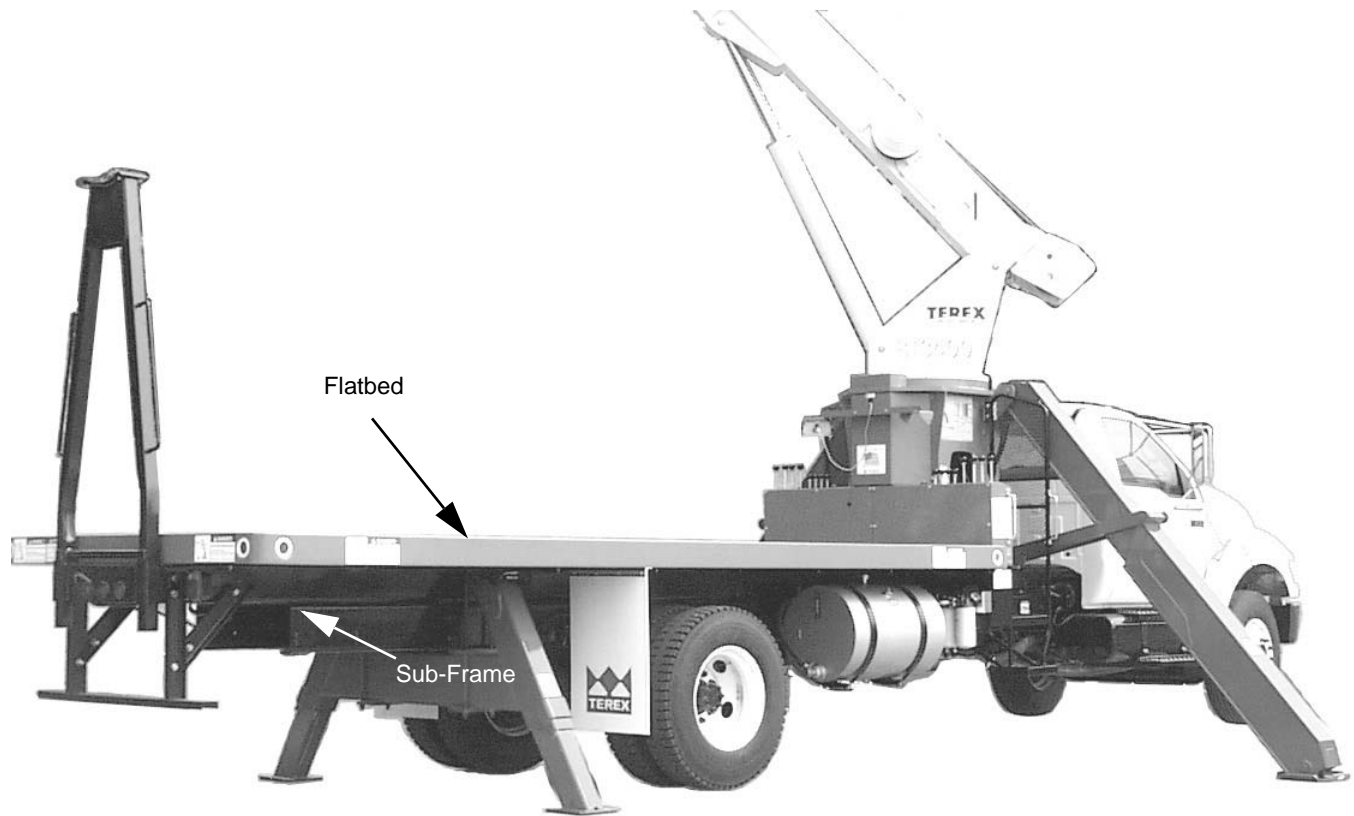
SUBFRAME INSTALLATION BOOM TRUCKS (BT)

DATE: Revised 03-2006
MODEL: BT4000
Page 02.2

GROUP
02

Terex Bt4000 Parts

Full download: <http://manualplace.com/download/terex-bt4000-parts/>



Sub Frame/Flatbed Options

Model	Bed Length	Standard Steel Flatbed	Sub-Frame
RM4792	16 Feet	600-38023	701-00554
BT4485	20 Feet	600-38021	701-00486
BT4792	21 Feet	600-38143	701-00511

NOTE* Not all options are listed above. Contact dealer for complete list of options available.

WHEN ORDERING PARTS, SPECIFY MODEL NUMBER, SERIAL NUMBER AND DESCRIPTION OF PARTS REQUIRED



SUB-FRAME/FLATBED OPTIONS

DATE: Revised 03-2006

MODEL: BT4000

Page 02.3

GROUP
02