



Publication Part Number: **15503052**

PARTS BOOK

CLICK HERE FOR
TRACTOR
TABLE OF CONTENTS

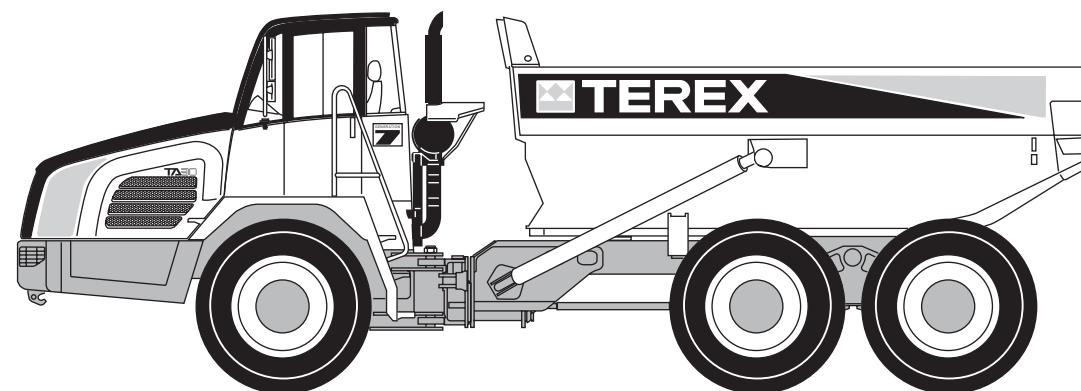
CLICK HERE FOR
TRACTOR OPTIONAL
TABLE OF CONTENTS

CLICK HERE FOR
TRAILER
TABLE OF CONTENTS

CLICK HERE FOR
TRAILER OPTIONAL
TABLE OF CONTENTS

CLICK HERE
TO RETURN TO MAIN
LIBRARY INDEX

P11065



TA30 G7 Articulated Truck

(Cum QSM11 T3-350 HP Engine, ZF 6WG-310 Trans & NAF Axles)

Serial Nos. A8941011 through A8941753

Date: June 2006

Revised: 1st December 2009

THIS PAGE IS INTENTIONALLY LEFT BLANK



WARRANTY ON PARTS AND ATTACHMENTS

Terex Equipment Limited warrants that for a period of six months or 1000 hours, whichever comes first, after the sale of new Terex replacement parts or attachments by an authorised Terex dealer it will repair, or at its option, replace any defective or malfunctioning part or attachment. This warranty covers only malfunctions resulting from defects in material or workmanship.

This warranty does not cover malfunctions resulting from negligence, alteration, accident or overloading; use for a purpose for which the part or attachment is not designed or approved by Terex; loss of time, inconvenience, loss of use of the vehicle or other consequential damages; or labour for removal or reinstallation of defective or malfunctioning parts or attachments.

Repairs or replacements qualifying under this warranty will be performed by any authorised Terex dealer within a reasonable time following delivery of the malfunctioning part or attachment to the dealer's place of business.

Defective or malfunctioning parts or attachments must be delivered to an authorised Terex dealer's place of business during regular business hours for warranty repairs or replacements. The dealer must be furnished with the purchaser's copy of the sales slip or repair order to validate date of purchase.

* * * * *

SOLE WARRANTY

This is the only express warranty applicable to new Terex parts and attachments sold by Terex dealers and Terex neither assumes nor authorises anyone to assume for it any other obligation or liability in connection with such parts or attachments.

THIS PAGE IS INTENTIONALLY LEFT BLANK

INSTRUCTIONS FOR USE OF TEREX PARTS BOOK

This Parts Book is divided into Major Sections which cover components corresponding to specific areas of the machine.

Printed at the top left hand corner of each Parts Page is an Index Code which includes three numbers - the first of these relates to a Major Section, the second indicates a Sub-section within a Major Section and the last the model PLI number. Certain Major Sections may not apply to the particular model covered in this Parts Book and, consequently, will be omitted.

An illustrated Index page shows all the Major Component Section numbers included in the book. For example -

SECTION 100 - CHASSIS

SECTION 140 - FRONT AXLE GROUP

SECTION 230 - BODY HOIST SYSTEM etc.

Major Component Sections are listed in the 'Table Of Contents' pages together with Sub-section headings. For example to locate the serviceable items of a Steering Cylinder -

1. The Table of Contents shows the steering components to be in Major Section 220.
2. The steering cylinder is listed in Major Section 220, Sub-section 0120
3. Select the Parts Page Code that applies to the unit Serial number for which parts are needed and locate the Page with reference number.
EXAMPLE - 220-0120.

SERIAL NUMBERS - Each Parts Book covers a particular range of unit Serial Numbers.

It is important that unit Serial Numbers are quoted on all orders for Parts.

PARTS LISTS - Parts Forms usually consist of detailed parts information listed on one page together with a parts illustration on the opposite page. The parts list is printed in the order of the reference numbers shown on the parts illustration. The first column lists Note Letters; the second lists the reference numbers; the third shows quantity required and the fourth gives the parts descriptions. Parts which are part of an assembly have their descriptions indented beneath the assembly description.

ILLUSTRATIONS - These show typical assemblies and individual piece parts. They are intended for general reference only and may not always show exact details of parts. Parts are identified on each illustration with an item number. Note the item number of the part required and locate it in the parts list. The part number opposite the item number is the part to order.



INDENTATIONS - Parts which are indented under another part are Sub-groups of a Major Assembly or Sub-assembly. Parts which are not indented are major assemblies or individual component parts which do not belong to a major assembly.

EXAMPLE - 1 9052564 Pump Assy.
2 9058512 . Shaft
3 9024169 . Ring
4 9058132 . Control Assy.
5 9058135 . . Spring
6 9072162 Gasket

- If you order Item 1, you will receive Items 1 - 5.
- If you order Item 4, you will receive Items 4 and 5.
- If you order Item 6, you will receive only Item 6.

NOTES - Whenever there is an alphabetical symbol to the left of the item number, refer to the corresponding note at the bottom of the form for information regarding ordering or application of the particular part number(s) noted.

ABBREVIATIONS - The abbreviations in this book have the following meanings -

Amps	Amperes	Hsg	Housing	N.I	Not Illustrated
As R	As Required	I.D	Inside Diameter	N.L.A	No Longer Available
Assy	Assembly	L.H	Left Hand	N.S.S	Not Sold Separately
Brkt	Bracket	L.W	Lockwasher	O.D	Outside Diameter
Cad-Pltd	Cadium Plated	Lg	Long	Pr	Pair
Comm	Commencement of production	Lkg	Linkage	P.T.O	Power-Take-Off
E.S.N	Elastic Stop Nut	Mtg	Mounting	R.H	Right Hand
Ftgs	Fittings	N.C	Note Code	Std	Standard



Articulated Truck



TRACTOR SECTIONS



CHASSIS

100



ENGINE

110



TRANSMISSION

120



DRIVELINE

130



FRONT AXLE

140



SUSPENSION SYSTEM

180



ELECTRICAL SYSTEM

190



FUEL SYSTEM

200



COOLING SYSTEM

210



MAIN HYDRAULIC VALVE

215



STEERING SYSTEM

220



BODY HOIST SYSTEM

230



BRAKING SYSTEM

250



CAB

260



DECALS

290



MISCELLANEOUS

300



TABLE OF CONTENTS FOR MODEL TA30 T3 TRACTOR

FROM SERIAL NO A8941011

REVISED 12/09

SECT-PAGE-PLI	DESCRIPTION	SERIAL NO. EFFECTIVITY	REVISION AND DATE
<u>SECTION 100</u>	<u>CHASSIS</u>		
100-0010-8951	CHASSIS		
100-0030-8951	SOUND INSULATION		R2 11/08
100-0040-8951	HOOD AND MOUNTING		R3 06/08
100-0070-8951	FENDERS AND MOUNTING	A8941011 TO A8941037	
100-0070-8951	FENDERS AND MOUNTING	A8941038	R1 09/07
100-0135-8951	ROCK AND SUMP GUARDS		
<u>SECTION 110</u>	<u>ENGINE</u>		
110-0020-8951	ENGINE ORDERING INSTRUCTIONS		
110-0030-8951	ENGINE AND MOUNTING		
110-0050-8951	AIR CLEANER		
110-0060-8951	AIR CLEANER PIPES AND HOSES		R1 06/07
110-0070-8951	EXHAUST AND MOUNTING		R3 06/08
<u>SECTION 120</u>	<u>TRANSMISSION</u>		
120-0010-8951	TRANSMISSION MOUNTING		R1 10/07
120-0020-8951	TRANSMISSION BREAKDOWN		
120-0070-8951	SHIFT CONTROL		R1 10/06
120-0100-8951	FILTER		
120-0110-8951	OIL LINES-TRANSMISSION		R3 09/09
120-0220-8951	OIL PUMP		
120-0390-8951	TORQUE CONVERTER		
120-0400-8951	LUBRICATION PIPES		
120-0410-8951	INDUCTIVE TRANSMITTER		
120-0430-8951	ELECTRIC SHIFT CONTROL VALVE		
120-0440-8951	GEARSHIFT		
120-0450-8951	GEARBOX HOUSING		
120-0460-8951	CLUTCH ASSEMBLY KV+K1		
120-0470-8951	CLUTCH ASSEMBLY KR+K2		
120-0480-8951	CLUTCH ASSEMBLY K3+K4		
120-0500-8951	PTO MAIN HYDRAULIC PUMP		
120-0515-8951	EMERGENCY STEERING PUMP		
120-0520-8951	INPUT-DRIVE ASSEMBLY		
120-0530-8951	LAYSHAFT GEARING		
120-0540-8951	DIFFERENTIAL		R1 12/09
120-0625-8951	TEMPERATURE SENSOR		
120-0900-8951	LOOSE PARTS-TRANSMISSION		R1 10/06

TABLE OF CONTENTS FOR MODEL TA30 T3 TRACTOR

FROM SERIAL NO A8941011

REVISED 12/09

SECT-PAGE-PLI	DESCRIPTION	SERIAL NO. EFFECTIVITY	REVISION AND DATE
<u>SECTION 130</u>	<u>DRIVELINE</u>		
130-0010-8951	FRONT DRIVELINE		
<u>SECTION 140</u>	<u>FRONT AXLE</u>		
140-0010-8951	AXLE COMPLETE-FRONT	A8941011 TO A8941708	
140-0010-8951	AXLE COMPLETE-FRONT	A8941709 TO A8941737	06/08
140-0010-8951	AXLE COMPLETE-FRONT	A8941738	06/08
140-0020-8951	AXLE GROUP-FRONT	A8941011 TO A8941708	
140-0020-8951	AXLE GROUP-FRONT	A8941709 TO A8941737	06/08
140-0020-8951	AXLE GROUP-FRONT	A8941738	06/08
140-0030-8951	PLANETARY GEARING-FRONT	A8941011 TO A8941564	R1 08/07
140-0030-8951	PLANETARY GEARING-FRONT	A8941565 TO A8941708	R1 08/07
140-0030-8951	PLANETARY GEARING-FRONT	A8941709 TO A8941737	06/08
140-0030-8951	PLANETARY GEARING-FRONT	A8941738	06/08
140-0040-8951	WHEEL, RIM AND TYRE-FRONT		R1 09/07
140-0060-8951	DIFFERENTIAL-FRONT	A8941011 TO A8941708	R1 02/08
140-0060-8951	DIFFERENTIAL-FRONT	A8941709 TO 8941737	06/08
140-0060-8951	DIFFERENTIAL-FRONT	A8941738	06/08
140-0100-8951	DIFF-LOCK CONTROLS-FRONT		R3 06/08
<u>SECTION 180</u>	<u>SUSPENSION SYSTEM</u>		
180-0020-8951	FRONT SUSPENSION		R2 10/07
<u>SECTION 190</u>	<u>ELECTRICAL SYSTEM</u>		
190-0010-8951	TERMINALS		
190-0011-8951	CONNECTORS		
190-0030-8951	CABLES/HARNESSES-CAB		
190-0040-8951	CABLES/HARNESSES-CHASS/ENG		R2 08/08
190-0070-8951	BATTERY AND CABLES		
190-0080-8951	BATTERY MOUNTING		R1 12/09
190-0085-8951	ECU-HYD.SYSTEM MONITORING		R1 10/06
190-0100-8951	ELECTRICAL LIGHTING SYSTEM		R1 10/06
190-0110-8951	ALTERNATOR		
190-0120-8951	STARTER		
190-0270-8951	SWITCHES AND SENSORS		
190-0300-8951	RADIO CASSETTE AND SPEAKERS		
190-0310-8951	ELECTRICAL HORN		

TABLE OF CONTENTS FOR MODEL TA30 T3 TRACTOR

FROM SERIAL NO A8941011

REVISED 12/09

SECT-PAGE-PLI	DESCRIPTION	SERIAL NO. EFFECTIVITY	REVISION AND DATE
<u>SECTION 200</u>			
	<u>FUEL SYSTEM</u>		
200-0010-8951	FUEL TANK AND MOUNTING		
200-0040-8951	FUEL LINES		
200-0050-8951	ACCELERATOR LINKAGE		R1 06/08
<u>SECTION 210</u>			
	<u>COOLING SYSTEM</u>		
210-0010-8951	RADIATOR ASSEMBLY	A8941011 TO A8941602	
210-0010-8951	RADIATOR ASSEMBLY	A8941603	08/07
210-0020-8951	RADIATOR MOUNTING		
210-0030-8951	RADIATOR PIPING		
210-0035-8951	CHARGE AIR COOLER & PIPING		R1 08/08
210-0040-8951	RADIATOR HEADER TANK & HOSES		R1 08/08
210-0060-8951	OIL COOLER AND PIPING-TRANS	A8941011 TO A8941017	
210-0060-8951	OIL COOLER AND PIPING-TRANS	A8941018	R1 06/07
210-0061-8951	TRANS OIL COOLER MOUNTING		
210-0065-8951	OIL COOLER-TRANSMISSION		R3 09/09
<u>SECTION 215</u>			
	<u>MAIN HYDRAULIC VALVE</u>		
215-0050-8951	MAIN HYDRAULIC VALVE ASSEMBLY		
<u>SECTION 220</u>			
	<u>STEERING SYSTEM</u>		
220-0010-8951	STEERING LINES		R2 06/08
220-0090-8951	STEERING VALVE		
220-0120-8951	STEERING CYLINDER	A8941011 TO A8941167	
220-0120-8951	STEERING CYLINDER	A8941168	10/06
220-0230-8951	STEERING COLUMN MOUNTING		
<u>SECTION 230</u>			
	<u>BODY HOIST SYSTEM</u>		
230-0020-8951	LINES AND FITTINGS-BODY HOIST		
230-0040-8951	TANK AND MOUNTING-BODY HOIST		R1 08/08
230-0050-8951	PUMP-BODY HOIST		
230-0081-8951	JOYSTICK-BODY CONTROL		
<u>SECTION 250</u>			
	<u>BRAKING SYSTEM</u>		
250-0020-8951	BRAKE LINES-HYDRAULIC	A8941011 TO A8941635	R1 10/06
250-0020-8951	BRAKE LINES-HYDRAULIC	A8941636	09/07
250-0060-8951	BRAKE ACCUMULATOR		
250-0070-8951	TREADLE VALVE		R2 01/08

TABLE OF CONTENTS FOR MODEL TA30 T3 TRACTOR

FROM SERIAL NO A8941011

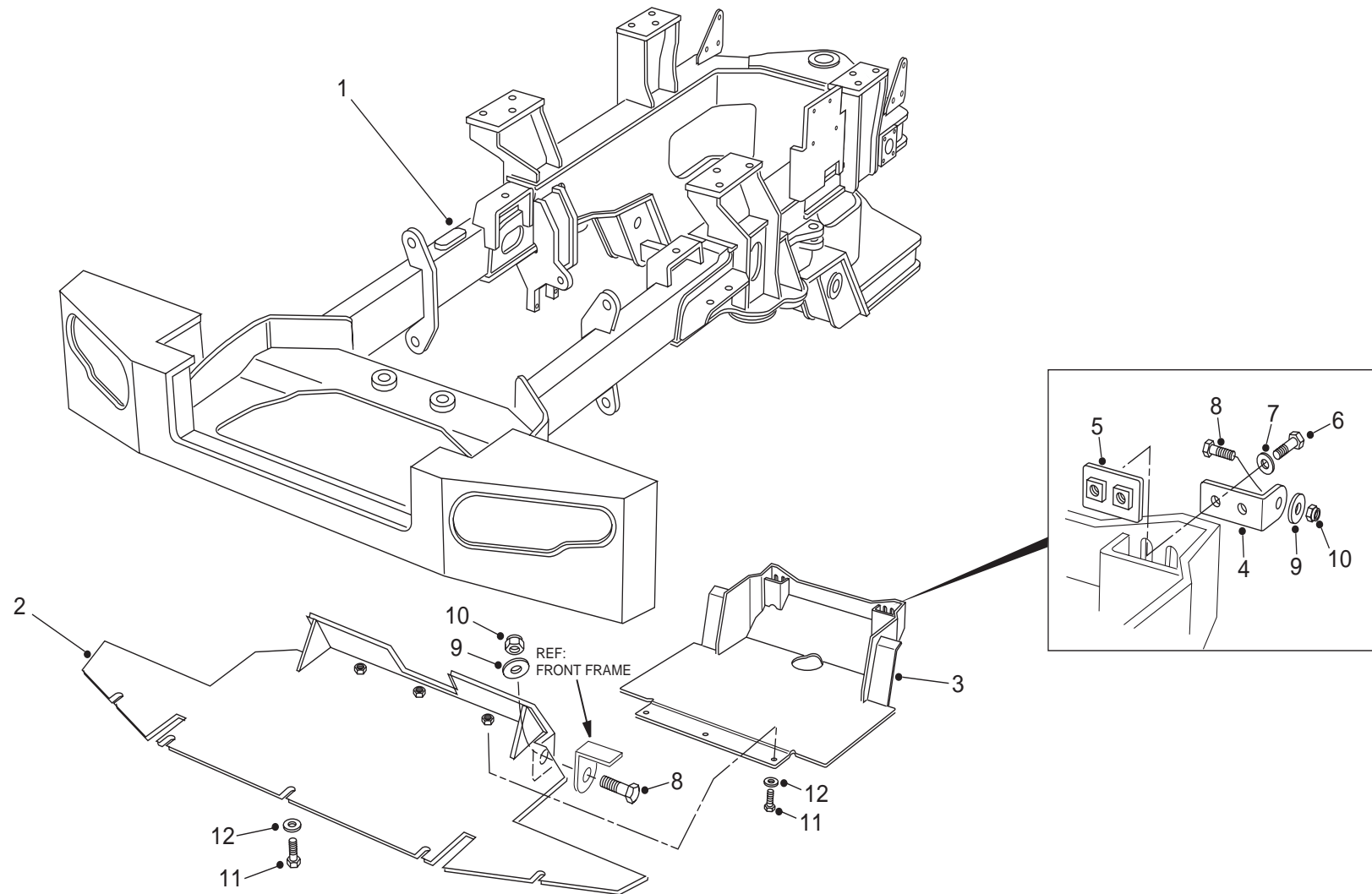
REVISED 12/09

SECT-PAGE-PLI	DESCRIPTION	SERIAL NO. EFFECTIVITY	REVISION AND DATE
<u>SECTION 260</u>			
	<u>CAB</u>		
260-0010-8951	CAB ASSEMBLY		R3 01/09
260-0015-8951	CAB MOUNTING	A8941011 TO A8941758	R1 08/07
260-0015-8951	CAB MOUNTING	A8941759	06/08
260-0018-8951	CAB TILT MECHANISM		R1 01/09
260-0030-8951	CAB DOOR-LEFT HAND		R1 09/07
260-0080-8951	SWITCHES AND INSTRUMENTS		R5 05/10
260-0090-8951	SEAT-DRIVER	A8941011 TO A8941594	R1 11/08
260-0090-8951	SEAT-DRIVER	A8941595	R1 03/09
260-0110-8951	SEAT-INSTRUCTOR		R1 06/07
260-0130-8951	AIR CONDITIONER/HEATER		
260-0140-8951	HEATER LINES AND WIRING		
260-0145-8951	AIR CONDITIONER LINES	A8941011 TO A8941602	
260-0145-8951	AIR CONDITIONER LINES	A8941603	08/07
260-0190-8951	WINDSCREEN WASHER		
<u>SECTION 290</u>			
	<u>DECALS</u>		
290-0010-8951	DECALS-ENGLISH	A8941011 TO A8941258	
290-0010-8951	DECALS-ENGLISH (ISO)	A8941259	R2 04/09
290-0011-8951	DECALS-ENGLISH (ANSI)	A8941259	R2 04/09
290-0100-8951	WALKWAY SURFACES (ANTI-SLIP)		06/07
<u>SECTION 300</u>			
	<u>MISCELLANEOUS</u>		
300-0040-8951	MULTI-TUBE CLAMPS AND HARDWARE		
300-0045-8951	POLYPROPELENE CLAMPS		
300-0200-8951	FILTERS AND ELEMENT KITS		11/08

100-0010-8951 CHASSIS
FROM SERIAL NO. A8941011

DRAWING NO. P11004

P11004



100-0010-8951 CHASSIS
FROM SERIAL NO. A8941011

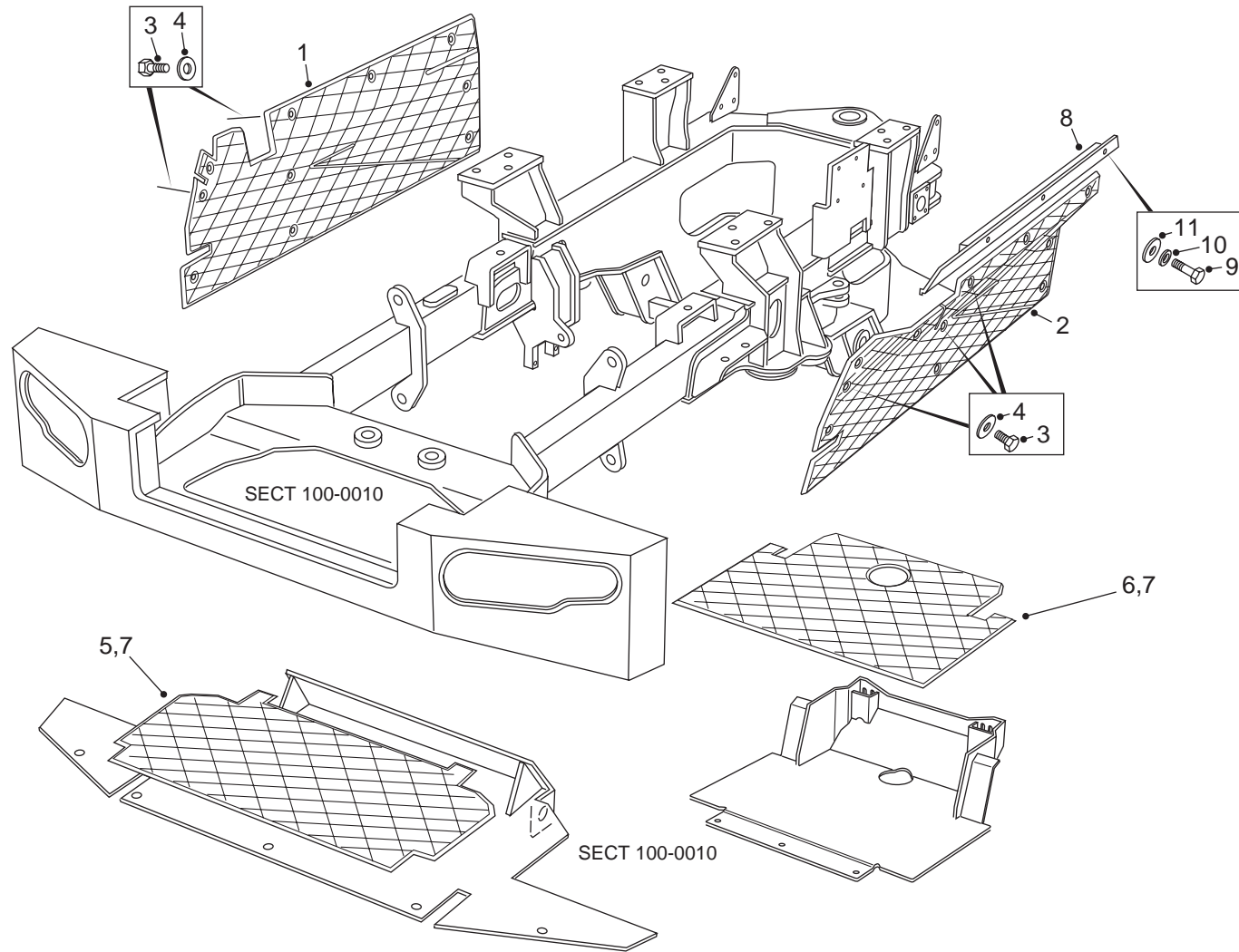
NC	REF	QTY	PART NO.	DESCRIPTION	SER.NO. FROM	SER.NO. TO
001	001		15331825	FRAME ASSY-COMLETE		
002	001		15314756	GUARD ASSY-CHASSIS		
003	001		15317222	GUARD ASSY-SUMP		
004	002		15314724	BRACKET-HINGE		
005	002		15314726	CLAMP PLATE		
006	004		06351655	BOLT		
007	004		09191596	WASHER		
008	004		06351670	BOLT		
009	004		07151630	WASHER		
010	004		06471601	LOCKNUT		
011	008		06351235	BOLT		
012	008		09217321	WASHER		

R2 11/08 (ECN 109023, ECN 109535)

100-0030-8951 SOUND INSULATION
FROM SERIAL NO. A8941011

DRAWING NO. P11207

P11207



100-0030-8951 SOUND INSULATION
 FROM SERIAL NO. A8941011

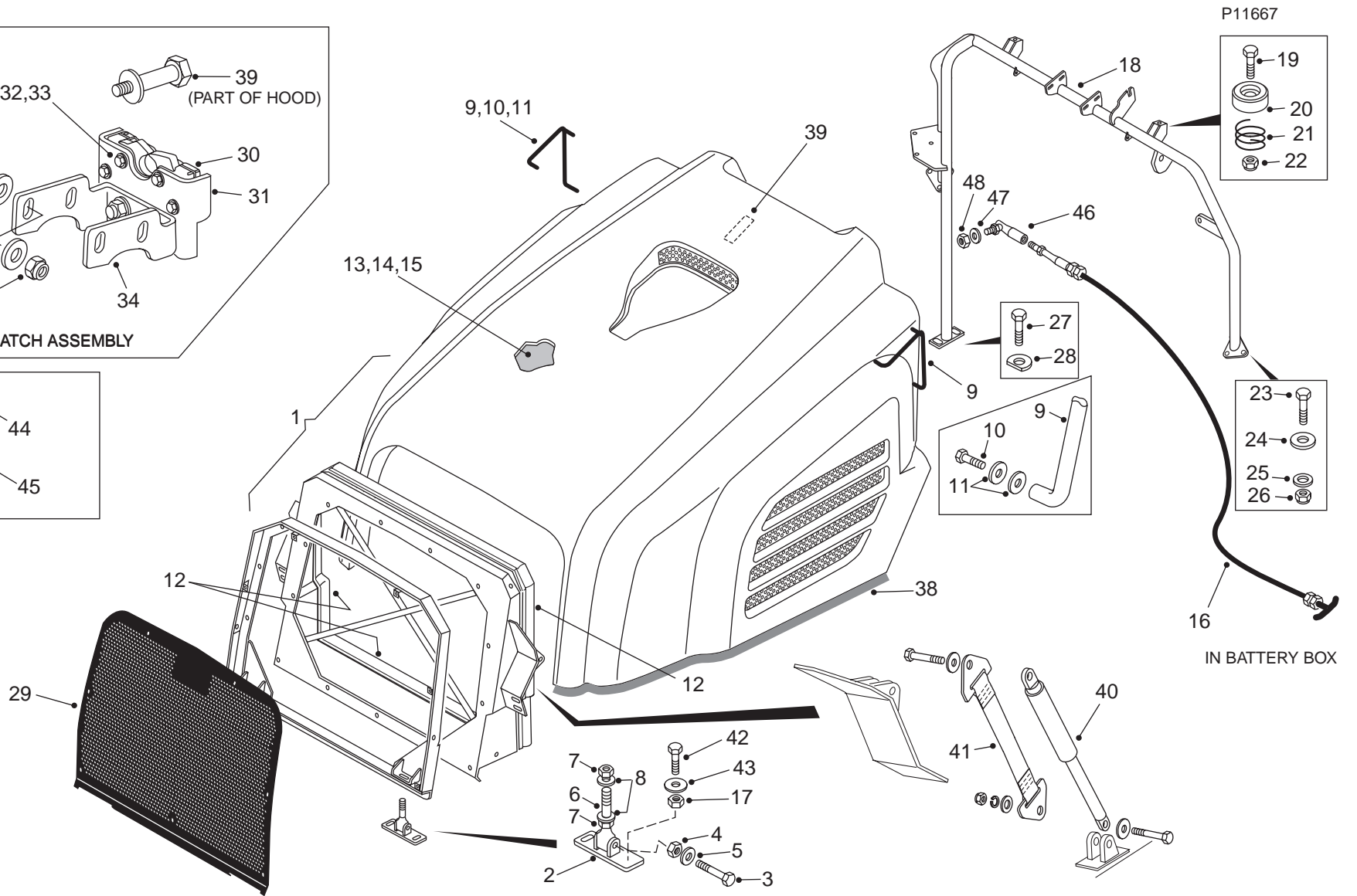
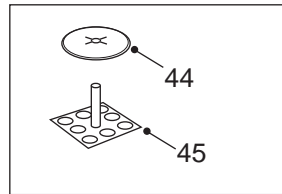
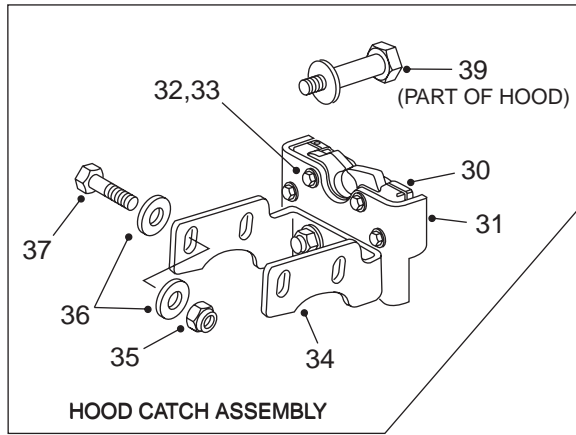
NC	REF	QTY	PART NO.	DESCRIPTION	SER.NO. FROM	SER.NO. TO
		001	001	15323970	QUILT-WHEEL ARCH-RH	A8941011 A8941716
		001	001	15339245	COVER-WHEEL ARCH-RH	A8941717
A		002	001	15323971	QUILT-WHEEL ARCH-LH	A8941011 A8941716
A		002	001	15339237	COVER-WHEEL ARCH-LH	A8941717
		003	015	06351230	BOLT	
		004	015	15234758	WASHER	
		005	001	15316801	QUILT-SUMP GUARD FT	A8941011 A8941716
		005	001	15339901	COVER-SUMP GUARD FT	A8941717
		006	001	15317825	QUILT-SUMP GUARD REAR	A8941011 A8941716
		006	001	15339909	COVER-SUMP GUARD REAR	A8941717
		007	ASR	09079599	ADHESIVE	
		008	001	15334034	PLATE-QUILT MTG	
		009	003	06351225	BOLT	
		010	003	07161230	LOCKWASHER	
		011	003	07151220	WASHER	

NOTE:A FOR UNITS FITTED WITH HI-INFLATION (WIDE) TYRES,
 REFER TO OPTIONAL SECTION 100-0030

R3 06/08 (SER CORR, ECN 108610, ECN 109321)

100-0040-8951 HOOD AND MOUNTING
FROM SERIAL NO. A8941011

DRAWING NO. P11667



100-0040-8951 HOOD AND MOUNTING
FROM SERIAL NO. A8941011

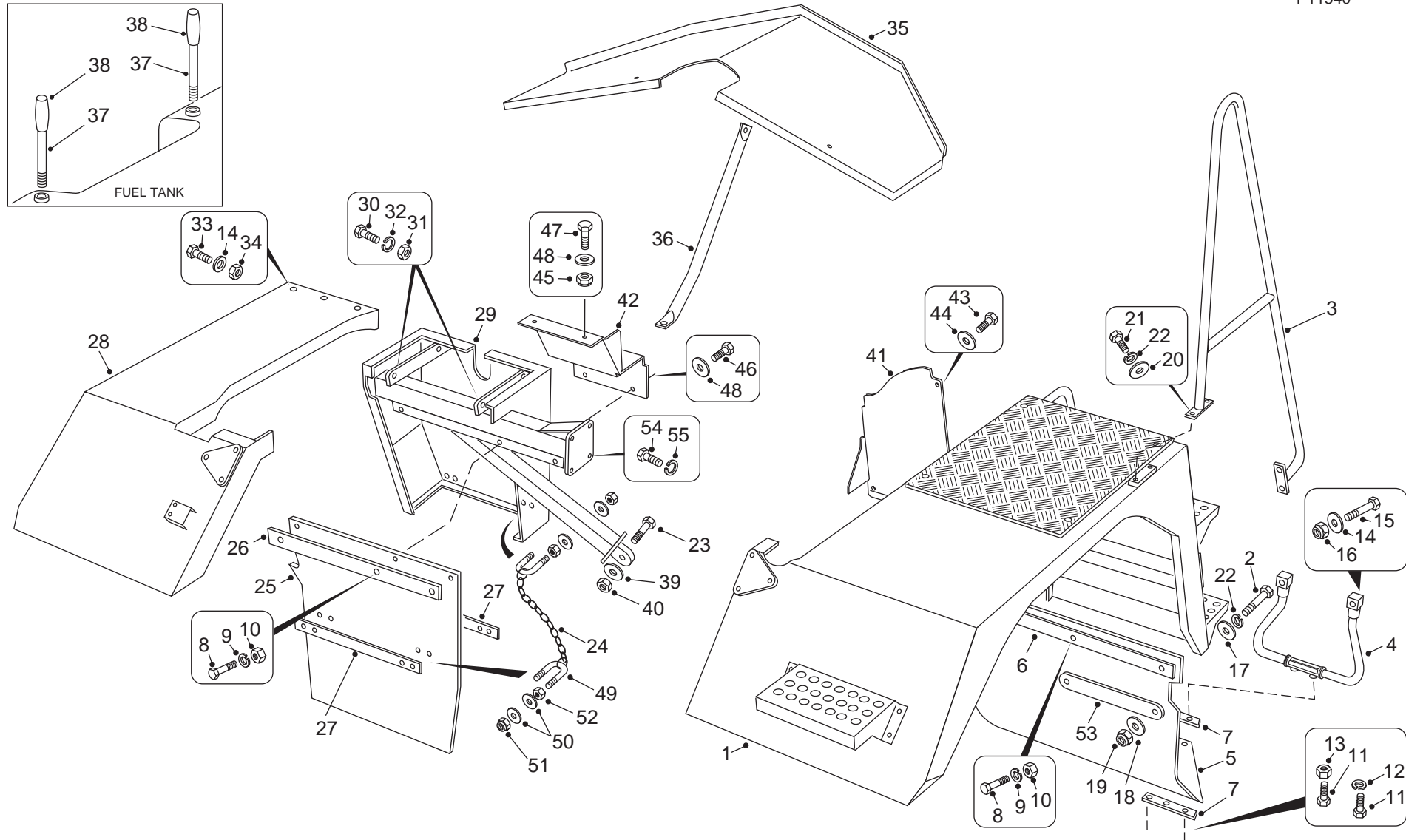
100-0040-8951 HOOD AND MOUNTING
FROM SERIAL NO. A8941011

NC	REF	QTY	PART NO.	DESCRIPTION	SER.NO. FROM	SER.NO. TO	NC	REF	QTY	PART NO.	DESCRIPTION	SER.NO. FROM	SER.NO. TO
001	001		15331377	HOOD ASSY	A8941011	A8941602	039	001		15320831	STRIKER BOLT		
001	001		15337118	HOOD ASSY	A8941603		040	002		15313446	GAS STRUT		
002	002		15313176	.HINGE ASSY			041	002		15313472	STRAP-HOOD RETAINING		
003	002		06351675	.BOLT			042	004		06351655	BOLT		
004	002		15252584	.NUT			043	004		09191596	WASHER		
005	002		07151630	.WASHER			044	ASR		15501136	CAP		
006	002		15313179	.ROD-ADJUSTMENT			045	ASR		15503211	STUD 25MM LG		
007	004		06432001	.NUT			046	001		15256961	BALLJOINT		
008	004		09250715	.WASHER-HARDENED			047	001		00103319	LOCKWASHER		
009	002		15315116	.HANDLE-HOOD			048	001		00103024	LOCKNUT		
010	006		15309253	.BOLT									
011	012		15307237	.WASHER									
012	ASR		15244364	.SEAL-BULK									
013	001		15324159	HOOD QUILT-LHS									
014	001		15324160	HOOD QUILT-RHS									
015	001		15324161	HOOD QUILT-TOP									
016	001		15314415	CABLE-HOOD CATCH									
017	004		06471601	LOCKNUT									
018	001		15332275	GOALPOST WELDMENT									
019	002		00179828	BOLT									
020	002		15307804	STOP-HOOD									
021	002		05187308	SPRING									
022	002		09414094	LOCKNUT									
023	006		06351250	BOLT									
024	006		09217321	WASHER									
025	006		09267660	WASHER									
026	006		06471201	LOCKNUT									
027	002		06351230	BOLT									
028	002		15309558	WASHER-D SHAPE									
029	001		15313814	GRILLE									
030	001		15320830	HOOD CATCH									
031	001		15320980	BRACKET ASSY									
032	004		06350630	BOLT									
033	004		00147577	WASHER									
034	001		15323699	BRACKET									
035	004		06471201	LOCKNUT									
036	008		00116060	WASHER									
037	004		06351240	BOLT									
038	ASR		15319946	LIP SEAL									

100-0070-8951 FENDERS AND MOUNTING
FROM SERIAL NO. A8941011 TO A8941037

DRAWING NO. P11540

P11540



100-0070-8951 FENDERS AND MOUNTING
FROM SERIAL NO. A8941011 TO A8941037

NC	REF	QTY	PART NO.	DESCRIPTION	SER.NO. FROM	SER.NO. TO
001	001		15316871	LH FENDER PLATFORM		
002	002		15240002	BOLT		
003	001		15311946	HANDRAIL		
004	002		15311947	STEP ASSY-WIRE		
005	002		15318085	MUDFLAP-FRONT LH		
006	002		15311949	PLATE		
007	004		15303969	STIFFENER-MUDFLAP		
008	006		00179820	BOLT		
009	006		00103320	LOCKWASHER		
010	006		00102634	NUT		
011	006		06350825	BOLT		
012	004		07160830	LOCKWASHER		
013	002		06470801	NUT		
014	008		09267949	WASHER-HARDENED		
015	004		00179892	BOLT		
016	004		00274209	LOCKNUT		
017	002		07151220	WASHER		
018	002		15234758	WASHER		
019	002		06471201	LOCKNUT		
020	004		09267660	WASHER		
021	004		06351230	BOLT		
022	002		07161230	LOCKWASHER		
023	001		06372070	BOLT		
024	002		15317037	CHAIN-MUDFLAP STAY		
025	001		15318836	MUDFLAP-FRONT RH		
026	001		15318829	PLATE		
027	002		15316708	CLAMP PLATE		
028	001		15317173	PLATFORM-RH		
029	001		15318825	SIDE STEP ASSY-RH		
030	004		06442040	SCREW SET		
031	004		06472001	NUT		
032	004		07162030	LOCKWASHER		
033	003		06351240	BOLT		
034	003		06471201	LOCKNUT		
035	001		15331048	SPILL GUARD		
036	001		15331050	BRACE-SPILL GUARD		
037	002		15228110	TUBE		
038	002		09366021	GRIP		
039	001		09270005	WASHER-HARDENED		
040	001		06432001	NUT		

100-0070-8951 FENDERS AND MOUNTING
FROM SERIAL NO. A8941011 TO A8941037

NC	REF	QTY	PART NO.	DESCRIPTION	SER.NO. FROM	SER.NO. TO
041	001		15316479	PANEL-INFILL LH		
042	001		15316656	PANEL-INFILL RH		
043	003		00179839	BOLT		
044	003		00106263	WASHER		
045	002		00274208	LOCKNUT		
046	002		00179837	BOLT		
047	002		00179839	BOLT		
048	004		00106263	WASHER		
049	004		15317030	U-BOLT		
050	008		07150815	WASHER		
051	008		06470801	NUT		
052	008		06430801	NUT		
053	001		15318086	PLATE-MUDFLAP CLAMPING		
054	004		15311176	BOLT		
055	004		07161630	LOCKWASHER		

R1 09/07 (SER CORR)

100-0070-8951 FENDERS AND MOUNTING
FROM SERIAL NO. A8941038

DRAWING NO. P11921

P11921

