

TCM[®]

PARTS MANUAL

DIESEL ENGINE

V3300-BF-TCM-1

KUBOTA

TCM CORPORATION

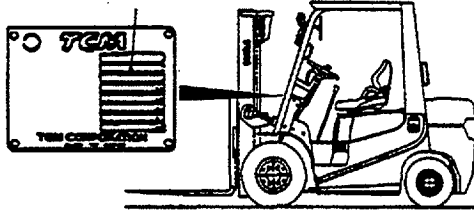
ご使用のまえに

このパーツマニュアルは、**TCM 7-7171** のエンジンの構成部品を収録しています。

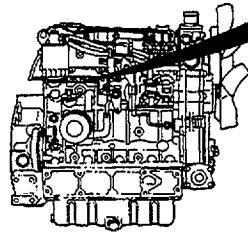
部品ご注文について

部品ご注文の際は、必ず車両の形式・製造番号（号車）、エンジンの形式・製造番号（号機）、部品番号および注文数を明示してください。車両の製造番号（号車）は車両銘板に、エンジンの製造番号（号機）は、シリンダブロックに打刻しています。

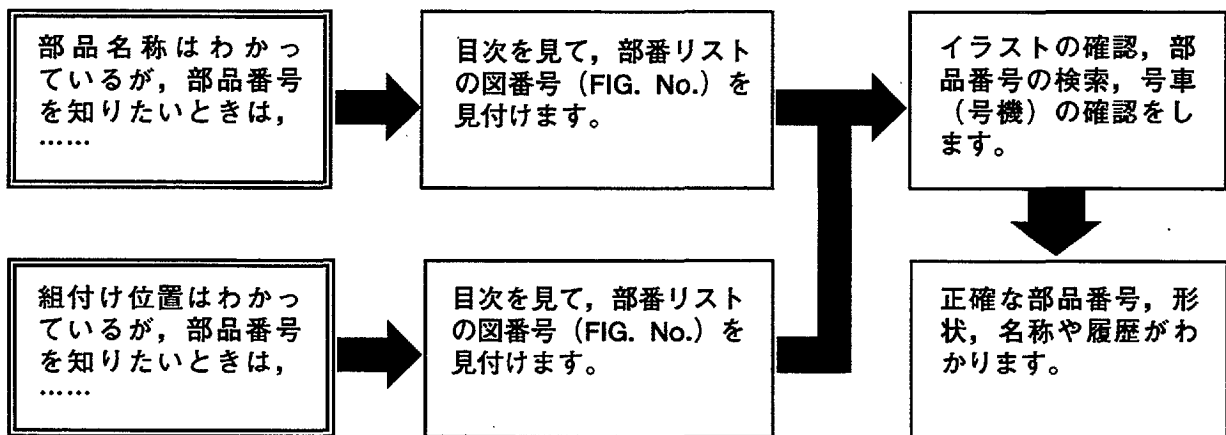
製造番号（号車）



エンジン製造番号
打刻位置



ご使用について



略語および記号

- A S S Y 組立品を示します。
- R H 車両の前方向に向かって右側を示します。
- L H 車両の前方向に向かって左側を示します。
- * セットおよびキットの販売部品を示します。

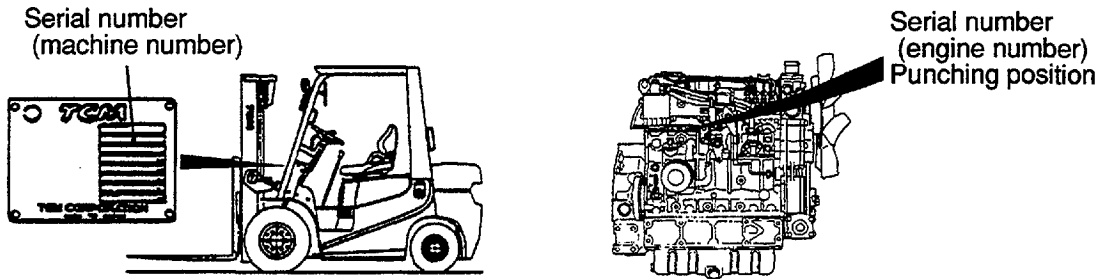
部品は、品質向上のため予告なく変更することがありますので、あらかじめご了承ください。

INTRODUCTION

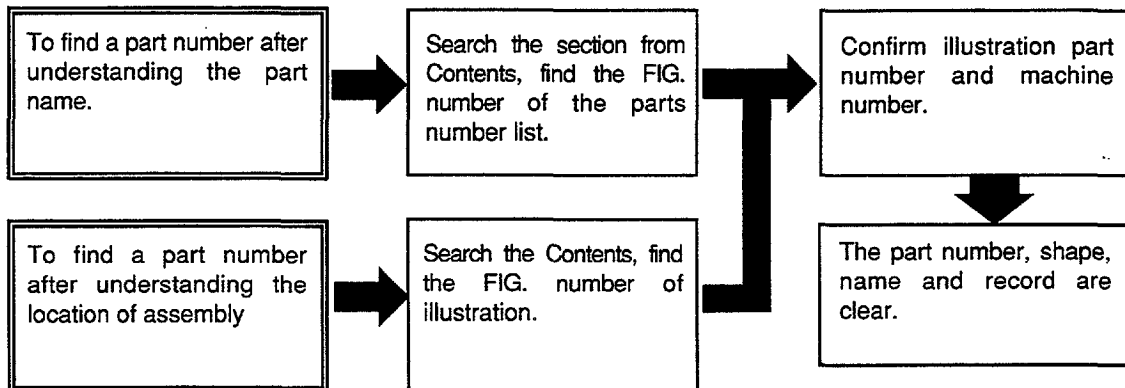
This Parts Manual contains the component parts of the engine mounted on **TCM FORKLIFT TRUCK**.

How to order parts

When ordering, be sure to specify the model name and serial number (machine number), engine type and serial number (engine number) of your machine, as well as the part number and desired quantity for each part. The machine serial number (machine number) is indicated on the machine name plate, the engine serial number (engine number) is punched on the cylinder block.



How to use the Parts Manual



Abbreviations and symbols

- ASSY ... Assembled unit.
- RH Right-hand when viewed forward on the truck.
- LH Left-hand when viewed forward on the truck.
- * The marketable part set or kit.

Materials and specifications subject to change without notice.

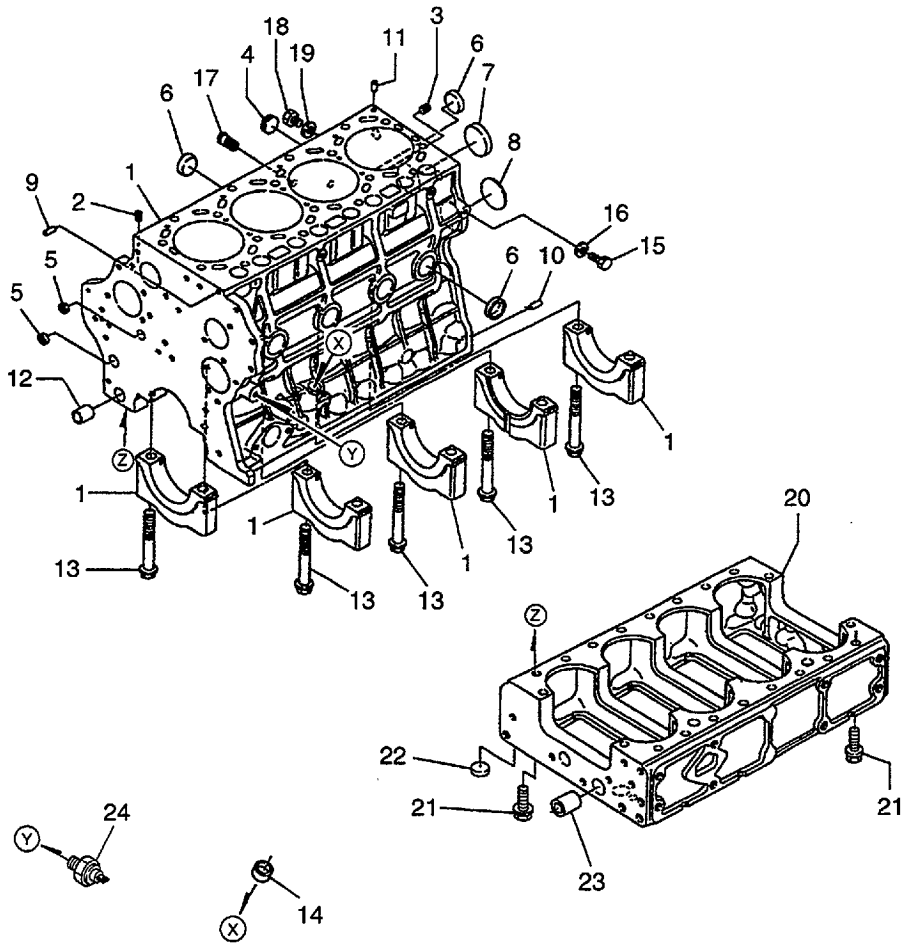
APPLICABLE MODEL

V3300-BF-TCM-1	Model FD20C6H
	Model FD20T6H
	Model FD25C6H
	Model FD25T6H
	Model FD30C6H
	Model FD30T6H

CONTENTS

SECTION	FIG.No.	SECTION	FIG.No.
ENGINE BODY			
CRANKCASE	1		
PISTON & CRANKSHAFT	2		
FLYWHEEL	3		
GEAR CASE	4		
OIL PAN	5		
BALANCER	6		
HEAD & VALVE MECHANISM			
CYLINDER HEAD	7		
CYLINDER HEAD COVER	8		
CAMSHAFT & IDLE GEAR SHAFT	9		
VALVE & ROCKER ARM	10		
INLET & EXHAUST			
MANIFOLD	11		
INLET PIPE	12		
LUBRICATION			
HYDRAULIC PUMP	13		
OIL COOLER	14		
COOLING			
WATER PUMP	15		
WATER FLANGE & THERMOSTAT	16		
FAN	17		
FUEL			
NOZZLE HOLDER & PIPING	18		
NOZZLE HOLDER (INNER PARTS)	19		
INJECTION PUMP MOUNT	20		
INJECTION PUMP (INNER PARTS)	21		
INJECTION PUMP HOUSING	22		
ELECTRICAL			
GOVERNOR	23		
FORK LEVER (GOVERNOR)	24		
FUEL FILTER	25		
STARTER MOUNT	26		
STARTER (INNER PARTS)	27		
ALTERNATOR & PULLEY	28		
ALTERNATOR (INNER PARTS)	29		
GLOW PLUG & OTHER PARTS	30		
PARTS NUMBER INDEX	1~3		

FIG. 1 CRANKCASE



Item No.	Part No.	Mark	Description	Req'd	Remarks : serial No.
1	BN-1C010-01010		CRANKCASE	1	INC.2-13
2	BN-15521-96020		PLUG	2	
3	BN-1C010-96010		PLUG	1	
4	BN-16683-96020		PLUG	1	
5	BN-15261-03370		CAP,SEALING	4	
6	BN-15221-03380		CAP,SEALING	9	
7	BN-15221-03390		CAP,SEALING	1	
8	BN-1C010-96160		PLUG,EXPANSION	1	
9	BN-05012-00822		PIN,STRAIGHT	1	
10	BN-05012-01020		PIN,STRAIGHT	4	
11	BN-15221-33650		PIN	2	
12	BN-1C010-33640		PIN	1	
13	BN-1C010-04560		BOLT	10	
14	BN-15261-03370		CAP,SEALING	1	
15	BN-15221-33610		PLUG	1	
16	BN-15021-33660		GASKET	1	
17	BN-1C010-37110		JOINT	1	
18	BN-06311-55030		PLUG	1	
19	BN-04714-00300		GASKET	1	
20	BN-1C010-01123		CRANKCASE	1	
21	BN-01774-51030		BOLT	16	
22	BN-15221-03380		CAP,SEALING	1	
23	BN-1C010-33650		PIN	1	
24	BN-15531-39010		SWITCH,OIL	1	