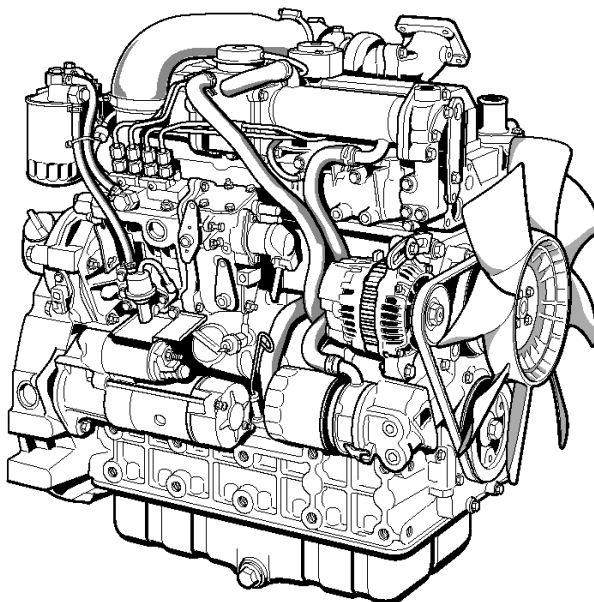


クボタディーゼルエンジン KUBOTA DIESEL ENGINE

純正部品表 ILLUSTRATED PARTS LIST

V3307-DI-T-E3B-TLTU1



型 式 名	備 考
V3307-DI-T-E3B-TLTU1	(綦竹内製作所向,トラックローダ(TL230A)搭載用)

2010年4月初版
APR.2010

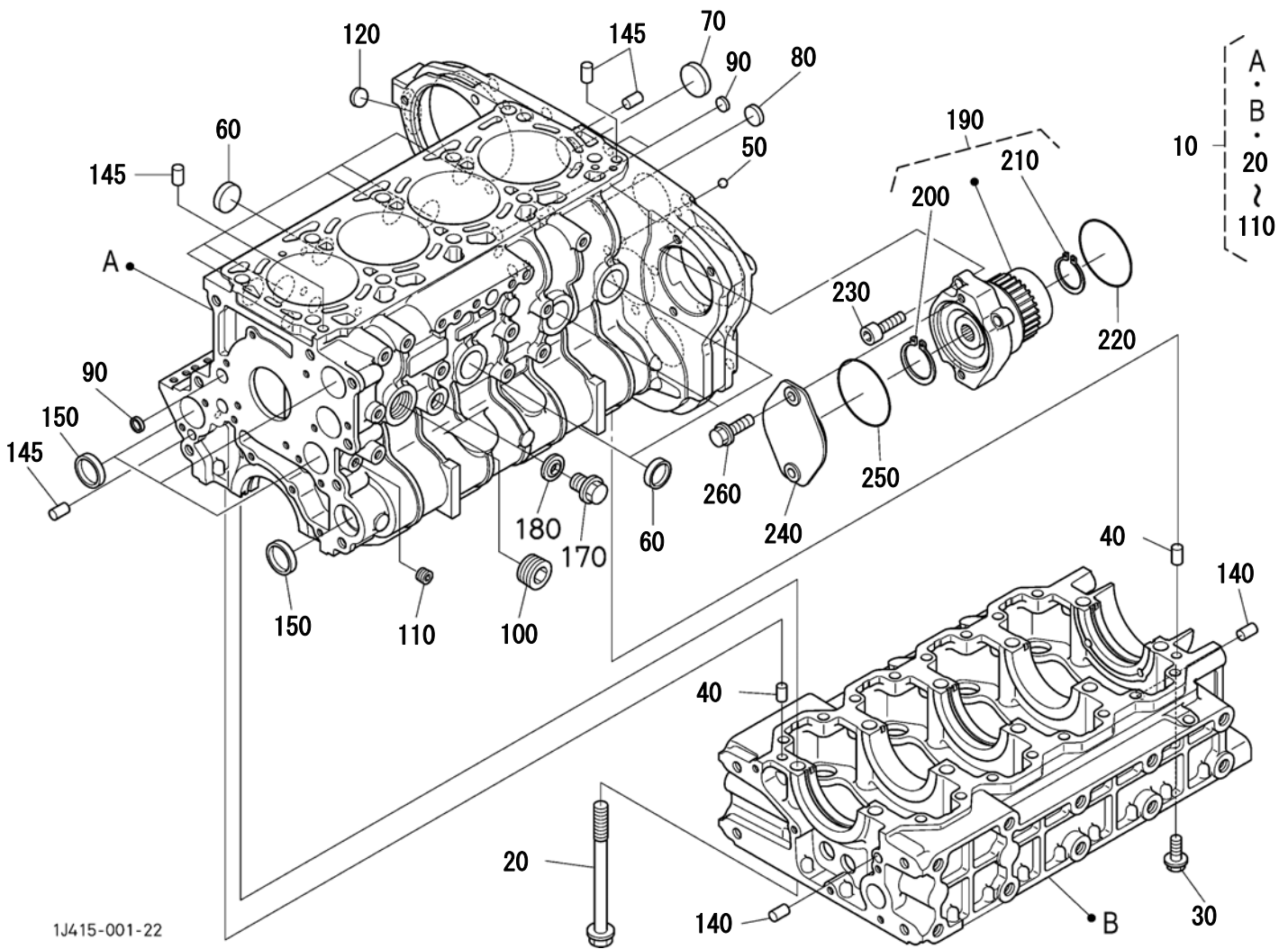
部品表番号
CODE No.

07909-C7846

Kubota

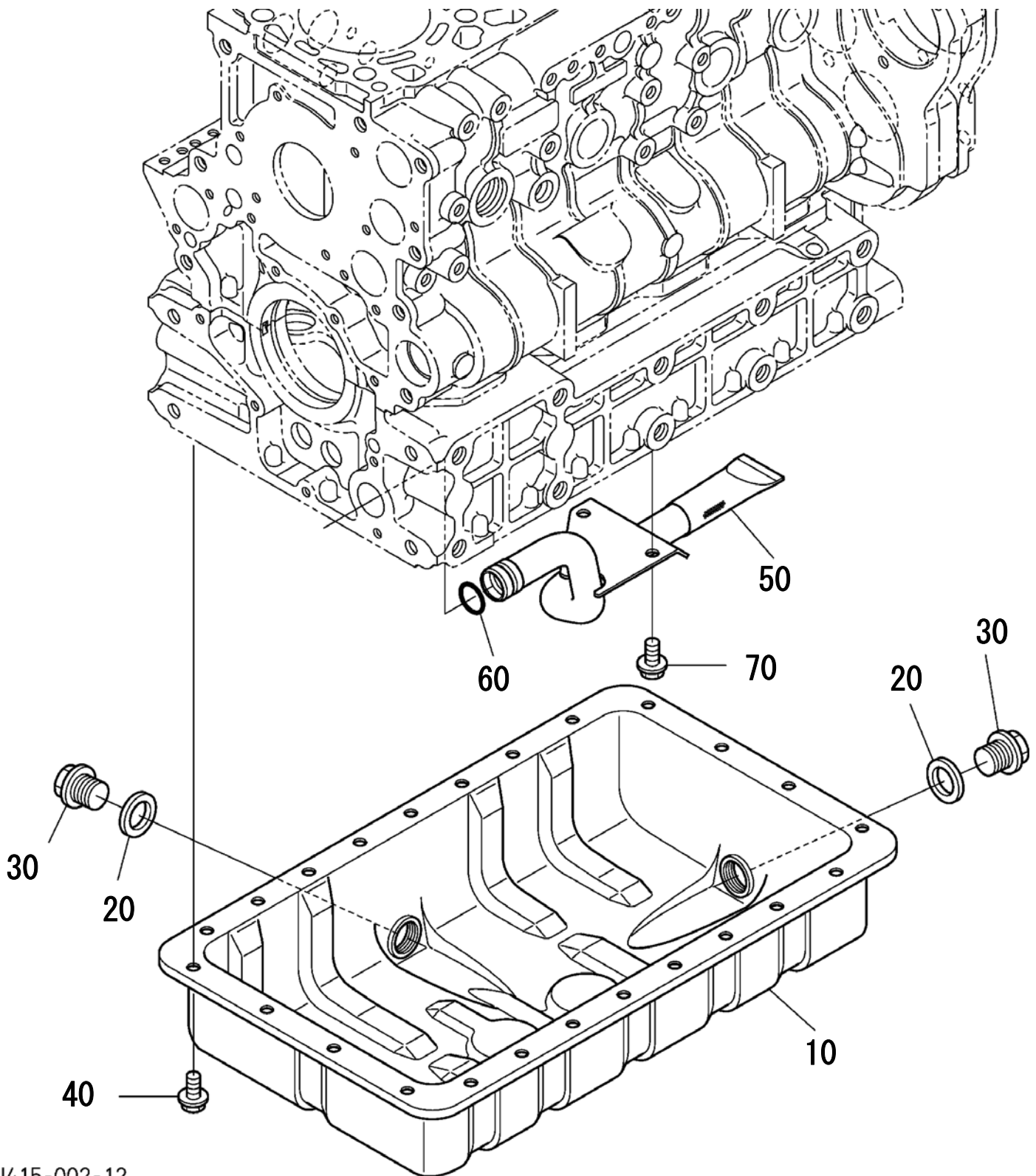
Page	INDEX
Fig.01	CRANK CASE
Fig.02	OIL PAN
Fig.03	DIPSTICK AND GUIDE
Fig.04	CYLINDER HEAD
Fig.05	INLET VALVE AND EXHAUST VALVE
Fig.06	ROCKER ARM SHAFT
Fig.07	HEAD COVER
Fig.08	FRONT COVER
Fig.09	PISTON AND CRANKSHAFT
Fig.10	CAMSHAFT AND IDLE GEAR SHAFT
Fig.11	FLYWHEEL
Fig.12	INJECTION PUMP UNIT
Fig.13	INJECTION PUMP HOUSING
Fig.14	INJECTION PUMP
Fig.15	FUEL PUMP
Fig.16	FUEL CAMSHAFT
Fig.17	GOVERNOR
Fig.18	FORK LEVER (GOVERNOR)
Fig.19	RESTRICTION ADJUSTING BOLT
Fig.20	STOP SOLENOID
Fig.21	FUEL FILTER
Fig.22	NOZZLE HOLDER AND GLOW PLUG
Fig.23	INJECTION PIPE
Fig.24	ALTERNATOR AND PULLEY
Fig.25	ALTERNATOR (COMPONENT PARTS)
Fig.26	STARTER
Fig.27	STARTER (COMPONENT PARTS)
Fig.28	OIL SWITCH
Fig.29	WATER FLANGE AND THERMOSTAT
Fig.30	WATER PUMP
Fig.31	WATER PIPE
Fig.32	RESERVE TANK
Fig.33	FAN AND PULLEY
Fig.34	INLET MANIFOLD
Fig.35	EXHAUST MANIFOLD
Fig.36	EGR VALVE
Fig.37	EGR COOLER
Fig.38	TURBO CHARGER
Fig.39	OIL PIPE (TURBO CHARGER)
Fig.40	OIL PIPE (SIDE PTO)
Fig.41	OIL COOLER
Fig.42	GLOW LAMP AND TIMER
Fig.43	ACCESSORIES AND SERVICE PARTS
Fig.44	UPPER GASKET KIT [OPTION]
Fig.45	LOWER GASKET KIT [OPTION]
Fig.46	METAL KIT [OPTION]
Fig.47	PISTON KIT [OPTION]

Engine (P-TL230EBA) V3307-DI-T-E3B-TLTU1 (KUBOTA)
CRANK CASE



REF NO.	PARTS NO.	Description	Q'ty	クランクケース		GRANK CASE
				I	R	
10	K1K946-01020	ASSY CRANKCASE	1			
20	K1G772-03450	BOLT	10			
30	K1G772-91022	BOLT, FLANGE	16			
40	K05012-01016	PIN, STRAIGHT	2			
50	K07715-03209	BALL	1			
60	K15321-96260	CAP, SEALING	9			
70	K15221-03490	CAP, SEALING	1			
80	K16851-96270	CAP, SEALING	1			
90	K06311-85016	CAP, SEALING	3			
100	K16683-96020	PLUG	1			
110	K15521-96020	PLUG	1			
120	K06311-85018	CAP, SEALING	1			
130	---	BLANK	?			
140	K05012-01016	PIN, STRAIGHT	2			
145	K1G772-94520	PIN, STRAIGHT	4			
150	K15221-03490	CAP, SEALING	4			
160	---	BLANK	?			
170	---	BLANK	?			
180	---	BLANK	?			
190	K1K946-83070	COMP. BASE HYD. PUMP	1			
200	K04612-00400	CIR CLIP, EXTERNAL	1			
210	K04612-00350	CIR CLIP, EXTERNAL	1			
220	K1G773-83140	O RING	1			
230	K01370-11230	BOLT, HEX-SOC-HD	3			
240	K1G773-83150	COVER	1			
250	K1G773-83110	O RING	1			
260	K01774-61020	BOLT, FLANGE	2			

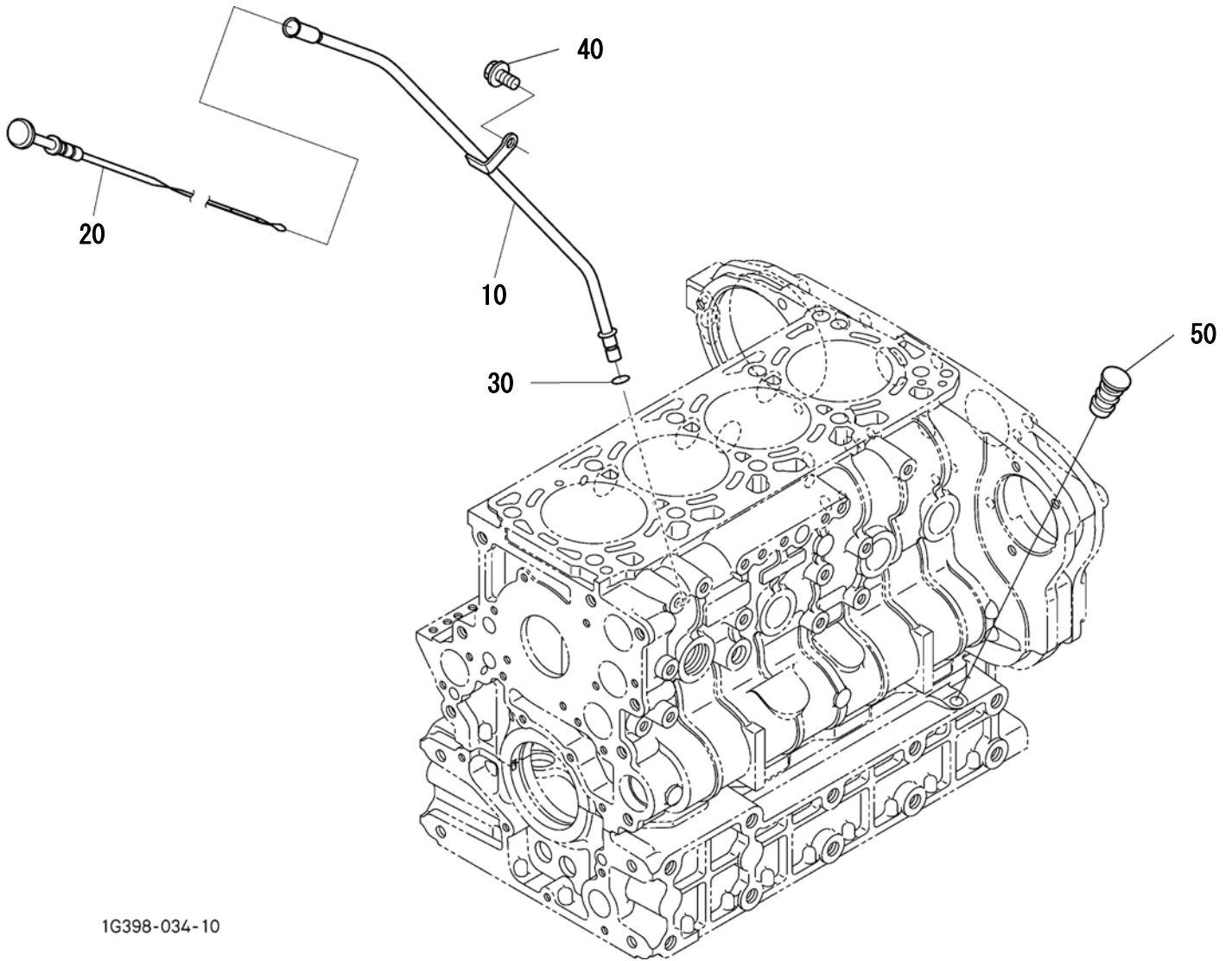
Engine (P-TL230EBA) V3307-DI-T-E3B-TLTU1 (KUBOTA)
OIL PAN



1J415-002-12

REF NO.	PARTS NO.	Description	Q'ty	I	R	Remarks	オイルパン	OIL PAN
10	K1G777-01500	COMP. OIL PAN	1					
20	K16265-96670	GASKET	2					
30	K15707-33750	PLUG, DRAIN	2					
40	K01755-50816	BOLT, FLANGE	24					
50	K1G777-32112	FILTER, OIL	1					
60	K04817-00200	O RING	1					
70	K01755-50816	BOLT, FLANGE	2					

Engine (P-TL230EBA) V3307-DI-T-E3B-TLTU1 (KUBOTA)
DIPSTICK AND GUIDE



1G398-034-10

REF NO.	PARTS NO.	Description	Q' ty	オイルゲージ		Remarks
				I	R	
10	K1K946-36420	GUIDE, OIL GAUGE	1			
20	K1K946-36410	GAUGE, OIL	1			
30	K04814-00090	O RING	1			
40	K01754-50814	BOLT, FLANGE	1			
50	K1G513-36550	PLUG, OIL GAUGE	1			

CYLINDER HEAD

