

Fig.No.	DESCRIPTION	IL	LI	REMARKS
01	Overall Figure	○		
02	Lower Machine	○	×	
03	Carrier Roller	○	○	
04	Track Roller	○	○	
05	Front Idler	○	○	
06	Track Tension	○	×	
07	Piping, Lower	○	○	
08	Turntable & Slew Gearbox	○	○	
09	Piping, Upper	○	△	
10	Valve Mounting	○	○	
11-1	Hydraulic Tank	×	×	#73~ For U.S.A.
11-2	Hydraulic Tank	○	×	#73~ For France
11-3	Hydraulic Tank	○	×	#73~ For Singapore
12	Fuel Tank	○	○	
13	Control Lever	○	×	
14	Control Box	○	○	
15	Engine Control	○	○	
16	Engine & Accessories	○	○	
17	Pump Drive	○	○	
18	Electricals	○	○	
19	Covers	○	○	
20-1	Seat	○	○	
20-2	Seat	○	○	
21-1	Cabin	○	△	
21-2	Cabin	×	×	
22	Hoe	○	○	

IL=Illustration LI=List

○=Appropriated to △=Somewhat retouched ×=Newly drawn up

Rev. ④

Fig.No.	DESCRIPTION	IL	LI	REMARKS
23	Bucket	○	○	
24	Piping, Hoe	○	○	
25-1	Stickers	×	×	For U.S.A.
25-2	Stickers	○	○	For France
25-3	Stickers	○	△	For Singapore
26	Tools	○	○	
27	Track Drive	○	○	
28-1	Swivel Joint	○	△	#71~#112
28-2	Swivel Joint	×	×	#113 ~
29	Control Valve, Main	×	×	
30	Control Valve, Sub	×	○	
31	Dividing Valve	○	○	
32	Slew Motor	×	×	
33	Boom Cylinder	○	○	
34	Arm Cylinder	○	○	
35	Bucket Cylinder	○	○	
36	Blade Cylinder	○	○	
37	Hydraulic Pump, Main	○	○	
OPTIONS				
38	Wide Shoe	○	○	
39	Triangular Shoe	○	○	
40	Bucket	○	○	
41	Ejector Bucket	○	○	
42	Heater	○	○	

IL=Illustration LI=List

○=Appropriated to

△=Somewhat retouched

×=Newly drawn up

Rev. ④

INDEX

FIG. 01	OVERALL FIGURE
FIG. 02	LOWER MACHINE
FIG. 03	CARRIER ROLLER
FIG. 04	TRACK ROLLER
FIG. 05	FRONT IDLER
FIG. 06	TRACK TENSION
FIG. 07	PIPING, Lower
FIG. 08	TURNTABLE & SLEW GEARBOX
FIG. 09	PIPING, Upper
FIG. 10	VALVE MOUNTING
FIG. 11	HYDRAULIC TANK
FIG. 12	FUEL TANK
FIG. 13	CONTROL LEVER
FIG. 14	CONTROL BOX
FIG. 15	ENGINE CONTROL
FIG. 16	ENGINE & ACCESSORIES
FIG. 17	PUMP DRIVE
FIG: 18	ELECTRICALS
FIG. 19	COVERS
FIG. 20	SEAT
FIG. 21	CABIN

INDEX

FIG. 22	HOE
FIG. 23	BUCKET
FIG. 24	PIPING, H o e
FIG. 25	STICKERS
FIG. 26	TOOLS
FIG. 27	TRACK DRIVE
FIG. 28	SWIVEL JOINT
FIG. 29	CONTROL VALVE, M a i n
FIG. 30	CONTROL VALVE, S u b
FIG. 31	DIVIDING VALVE
FIG. 32	SLEW MOTOR
FIG. 33	BOOM CYLINDER
FIG. 34	ARM CYLINDER
FIG. 35	BUCKET CYLINDER
FIG. 36	BLADE CYLINDER
FIG. 37	HYDRAULIC PUMP, M a i n

OPTIONS

FIG. 38	WIDE SHOE
FIG. 39	TRIANGULAR SHOE
FIG. 40	BUCKET
FIG. 41	EJECTOR BUCKET
FIG. 42	HEATER

GENERAL INFORMATION

This Parts Catalog contains parts lists and indexed exploded views to provide replacement part information for Mini-Back Hoe, Model TB-2200D.

An illustration of each page is drawn under the same condition as the figure of the overall assembly of the model except Control Box, Engine Control, Bucket (Incl. optional Bucket), and Hydraulic devices.

"Right Hand", "Left Hand", "Front", and "Rear" sides of the upper machine section are determined by sitting the operator's seat facing the control levers.

"Rear" side of the lower machine section is determined by the traction motor.

HOW TO ORDER PARTS

When ordering machine parts you are requested to mention clearly the number, the description, and the quantity of parts in demand together with the model and the serial number of the machine.

For example

TB-2200D 22027 19081-09095 HOSE 2

↓

↓

↓

↓

↓

MODEL

SERIAL NUMBER

PARTS NUMBER

DESCRIPTION

ORDERING
QUANTITY

HOW TO USE THIS PARTS CATALOG

Item Item shows the referring number appended to each part in illustrations for the index of parts.

PARTS NUMBER Parts No. shows the number proper to each part. A part with its number prefixed with "X" will not be supplied.

DESCRIPTION Description shows the name proper to each part. Component parts of assembling parts are shown with "*" marks and

are shown below of assembling parts, and which indicates daughter parts or grand daughter parts of parential relation.

Q' ty Q' ty shows the quantity used for one machine, however Q' ty of component parts shows the Q' ty used for one assembling parts. For certain parts an A. R. will be shown in the quantity column. This A. R. indicates the quantity to be used is "As required".

REMARKS Other essential particulars are put down. A number after "#" shows the serial number of the machine on which the part is used.

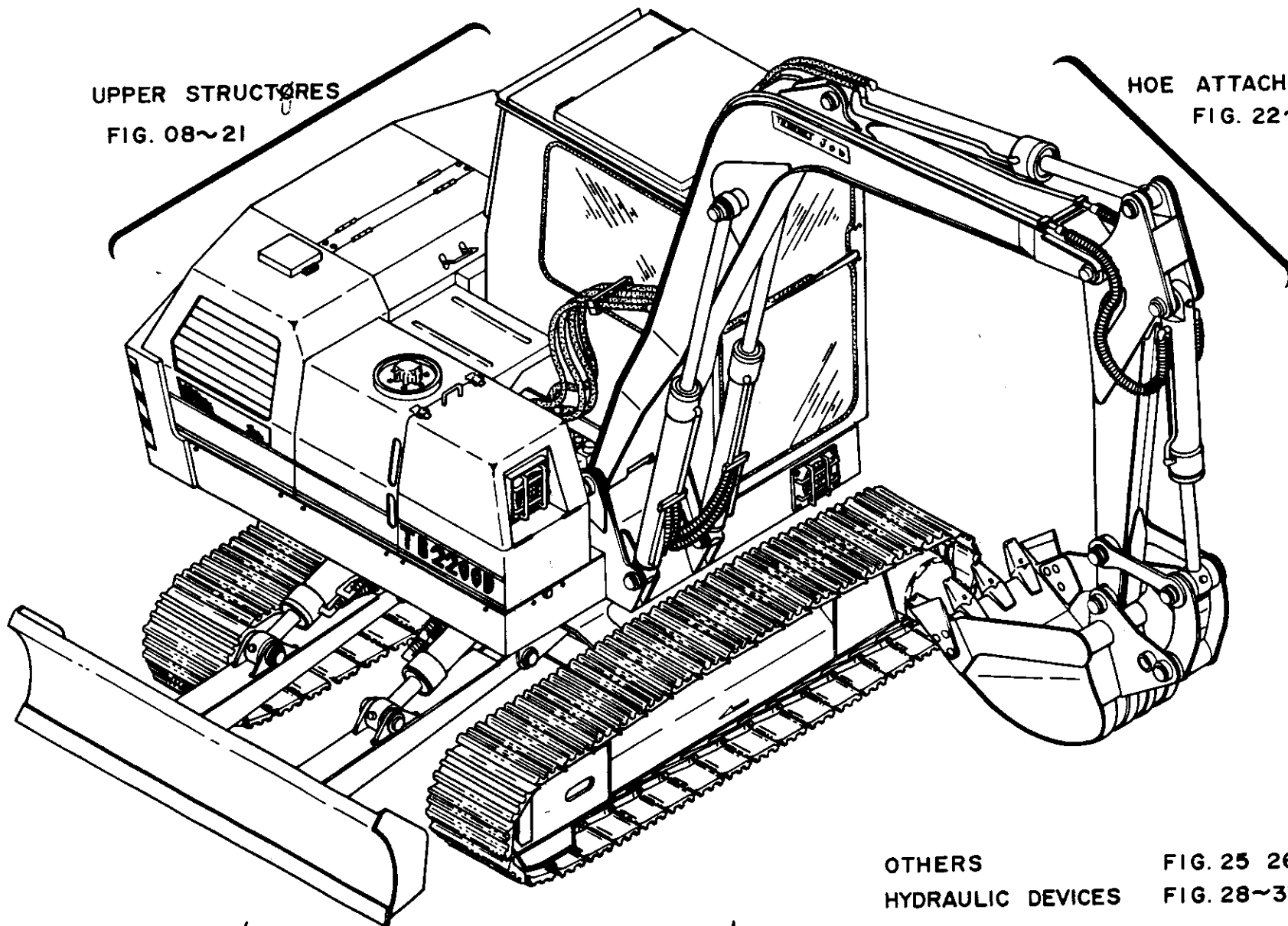
NOTE This column is provided only case of need.

Rev. ○ When changes to this book are necessary, revised pages will be issued with the same Fig. number as those they replace and the Rev. number in the circle (Rev. ①, Rev. ②, Rev. ③) will be advanced.

Interchangeability "↓↑" mark after description indicates the interchangeability between the part with this mark and one part just above or below it.

UPPER STRUCTURES
FIG. 08~21

HOE ATTACHMENTS
FIG. 22~24



UNDER STRUCTURES FIG. 02~07

OTHERS FIG. 25 26
HYDRAULIC DEVICES FIG. 28~37
OPTIONAL PARTS FIG. 38~41

Fig. 01 02 03 04 05 06 07 08 09 10 11 12 13 14 15 16 17 18 19 20 21 22 23 24 25 26 27 28 29 30 31 32 33 34 35 36 37 38 39 40 41 42 43 44 45 46 47 48 49 50 51 52 53 54 55 56 57 58 59 60 61 62 63 64 65 66 67 68 69 70 71 72 73 74 75 76 77 78 79 80 81 82 83 84 85 86 87 88 89 90 91 92 93 94 95 96 97 98 99 100

~~3284~~ check
 3284 (G)
 #113~
 PASS

D - O
 L - X

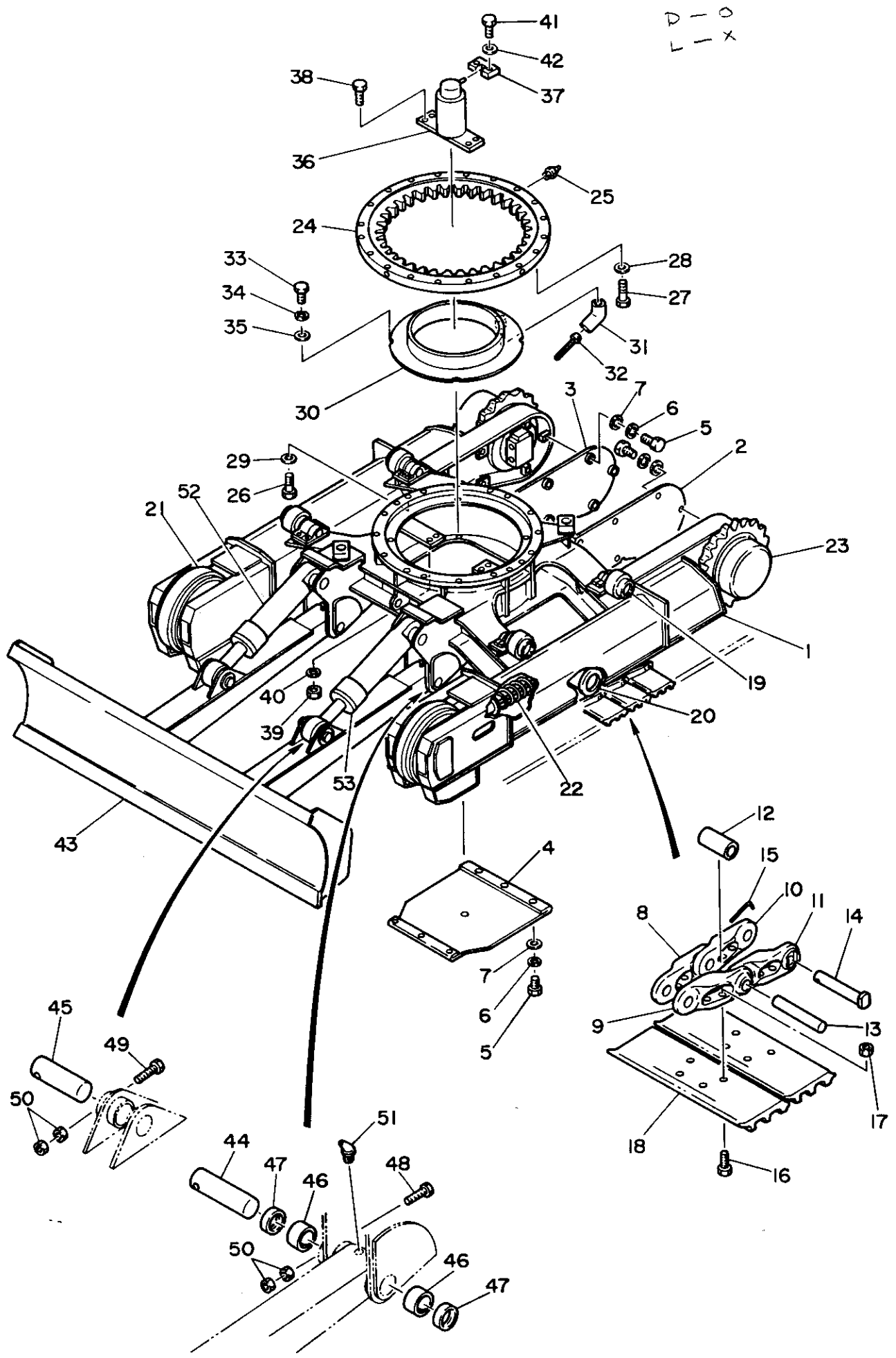


Fig. 02 ロア-マシ-ン組立

$S = 1/20$
 $(S = 1/10)$

Item	PARTS NUMBER	DESCRIPTION	Q'ty	REMARKS
1	×02210-47100	FRAME	1	
2	02210-47400	COVER, (L. H.) Motor	1	
3	02210-47500	COVER, (R. H.) Motor	1	
4	02610-00900	COVER, Bottom	1	
5	11000-41025	BOLT	20	
6	11400-20010	WASHER, Spring	20	
7	11411-10010	WASHER, Plain	20	
0-1	19140-03200	SHOE ASSY, Track	2	
8	19140-03101	★LINK, (R. H.)	37	
9	19140-03102	★LINK, (L. H.)	37	
10	19140-03103	★LINK, (R. H.) Master	1	
11	19140-03104	★LINK, (L. H.) Master	1	
12	19140-03105	★BUSHING	38	
13	19140-03106	★PIN, Track	37	
14	19140-03107	★PIN, Master	1	
15	19140-03108	★PIN	1	
16	19140-03109	★BOLT	152	
17	19140-03110	★NUT	152	
18	19140-03111	★PLATE, Shoe	38	
19	02213-90000	ROLLER ASSY, Carrier	4	
20	02212-90000	ROLLER ASSY, Track	10	
21	02214-90000	IDLER ASSY, Front	2	
22	02615-90000	TRACK TENSION	2	
23	02216-42000	TRACK GEARBOX	2	
24	19130-00300	BEARING, Slew	1	