



ERSATZTEILLISTE

Spare Parts List
Catalogue de pièces détachées
Catalogo parti di ricambio
Catálogo de recambio

ELEKTRO GABELSTAPLER

Electric Fork Truck
Chariot élévateur électrique
Carrello elevatore elettrico
Carretilla elevadora eléctrica

STILL ELECTRONIC DOCUMENTATION SYSTEM

RX60-60
RX60-70
RX60-80
RX60-80/900



6341 6342 6343 6344

first in intralogistics

56358010000 - 01/2014

Fig	Part-No.	Qty.	Description	Remark	validity	trucks
▶			PRODUCT INFORMATION			
▶			ELECTRIC MOTOR			
▶			MECHANICAL DRIVE AXLE			
▶			CHASSIS			
▶			DRIVER			
▶			STEERING SYSTEM			
▶			WHEELS AND TYRES			
▶			BRAKE POWER BOOSTER			
▶			CONTROLS			
▶			INDICATOR			
▶			ELECTRICS; ELECTRONICS			
▶			ELECTRONIC CONTROLS			
▶			HYDRAULICS			
▶			OPERATING HYDRAULIC			
▶			LOAD LIFT SYSTEM			
▶			MAST			
▶			LOAD CARRIER			
▶			ATTACHMENTS			
▶			SPECIAL EQUIPMENT			
▶			NARROW AISLE TRUCKS			
▶			OTHER ACCESSORIES			

Fig	Part-No.	Qty.	Description	Remark	validity	trucks
			DOCUMENTATION			

Fig	Part-No.	Qty.	Description	Remark	validity	trucks
▶			VEHICLE DOCUMENTS	R6341-44		
▶			DOCUMENTATION	Battery		

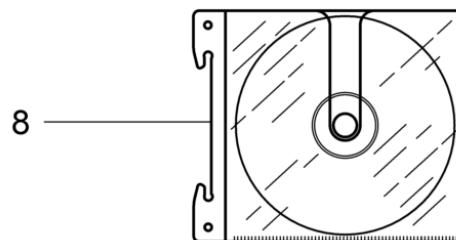
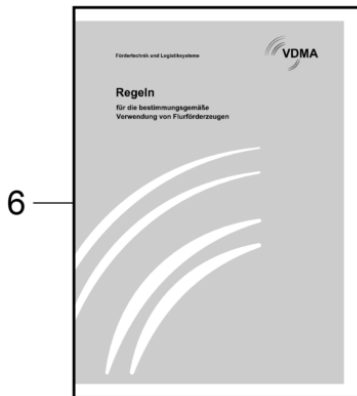
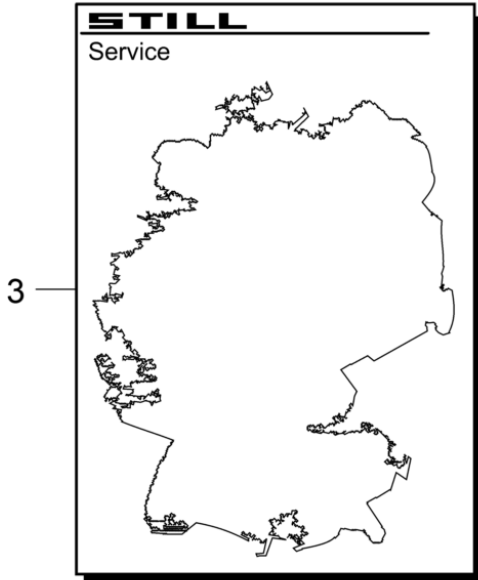
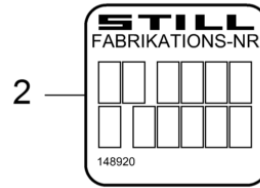
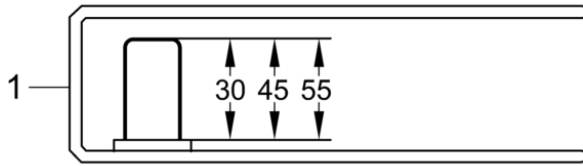


ABB: D

<http://www.still.de>

19535

Fig	Part-No.	Qty.	Description	Remark	validity	trucks
1	0146792	1	FILE	fill level = 30 mm		
1	0146793	1	FILE	fill level = 45 mm		
1	0146794	1	FILE	fill level = 55 mm		
1	50988044001	1	TECHNICAL INFORMATION FOLDER	OM STILL		
2	0148920	1	STICKER			
3	0905146	1	OVERVIEW OF FROMS STILL SERVICE A4			
4	0157528	1	SERVICE BOOKLET			
5	0148837	1	SERVICE INFORMATION			
6	0008042600	1	DIRECTIVE	VDMA-DE		
6	0008042601	1	DIRECTIVE	VDMA-EN		
6	0008042602	1	DIRECTIVE	VDMA-FR		
6	0008042603	1	DIRECTIVE	VDMA-IT		
6	0008042604	1	DIRECTIVE	VDMA-ES		
6	0008042611	1	DIRECTIVE	VDMA-DA		
6	0008042609	1	DIRECTIVE	VDMA-NL		
6	0008042605	1	DIRECTIVE	VDMA-PT		
6	0008042614	1	DIRECTIVE	VDMA-EL		
6	0008042610	1	DIRECTIVE	VDMA-SV		
6	0008042615	1	DIRECTIVE	VDMA-NO		
6	0008042612	1	DIRECTIVE	VDMA-FI		
6	0008042621	1	DIRECTIVE	VDMA-PL		
6	0008042620	1	DIRECTIVE	VDMA-HU		
6	0008042616	1	DIRECTIVE	VDMA-CS		
6	0008042622	1	DIRECTIVE	VDMA-SK		
6	0008042623	1	DIRECTIVE	VDMA-SL		
6	0008042617	1	DIRECTIVE	VDMA-ET		
6	0008042618	1	DIRECTIVE	VDMA-LV		
6	0008042619	1	DIRECTIVE	VDMA-LT		
6	0008042628	1	DIRECTIVE	IS		
6	0008042608	1	DIRECTIVE	VDMA-TR		
6	0008042613	1	DIRECTIVE	VDMA-RU		
6	0008042624	1	DIRECTIVE	VDMA-BG		
6	0008042625	1	DIRECTIVE	VDMA-RO		
6	0008042627	1	DIRECTIVE	VDMA-HR		
7	56358042500	1	OPERATING INSTRUCTIONS	DE		
7	56358042501	1	OPERATING INSTRUCTIONS	EN		
7	56358042502	1	OPERATING INSTRUCTIONS	FR		
7	56358042503	1	OPERATING INSTRUCTIONS	IT		
7	56358042504	1	OPERATING INSTRUCTIONS	ES		
7	56358042505	1	OPERATING INSTRUCTIONS	DA		
7	56358042506	1	OPERATING INSTRUCTIONS	NL		
7	56358042507	1	OPERATING INSTRUCTIONS	PT		

Fig	Part-No.	Qty.	Description	Remark	validity	trucks
7	56358042508	1	OPERATING INSTRUCTIONS	EL		
7	56358042509	1	OPERATING INSTRUCTIONS	BG		
7	56358042510	1	OPERATING INSTRUCTIONS	SV		
7	56358042511	1	OPERATING INSTRUCTIONS	NO		
7	56358042512	1	OPERATING INSTRUCTIONS	FI		
7	56358042513	1	OPERATING INSTRUCTIONS	RU		
7	56358042514	1	OPERATING INSTRUCTIONS	RO		
7	56358042515	1	OPERATING INSTRUCTIONS	PL		
7	56358042516	1	OPERATING INSTRUCTIONS	HU		
7	56358042517	1	OPERATING INSTRUCTIONS	CS		
7	56358042518	1	OPERATING INSTRUCTIONS	SK		
7	56358042519	1	OPERATING INSTRUCTIONS	SL		
7	56358042520	1	OPERATING INSTRUCTIONS	HR		
7	56358042521	1	OPERATING INSTRUCTIONS	ET		
7	56358042522	1	OPERATING INSTRUCTIONS	LV		
7	56358042523	1	OPERATING INSTRUCTIONS	LT		
7	56358042524	1	OPERATING INSTRUCTIONS	IS		
7	56358042525	1	OPERATING INSTRUCTIONS	TR		
8	56358010000	1	SPL	SPARE PARTS LIST		

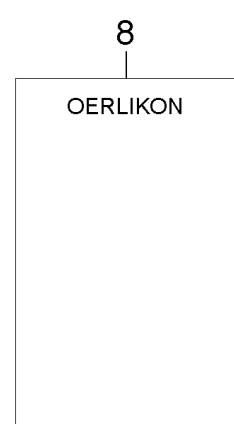
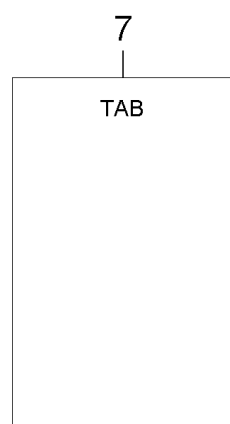
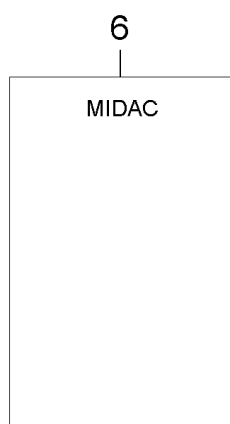
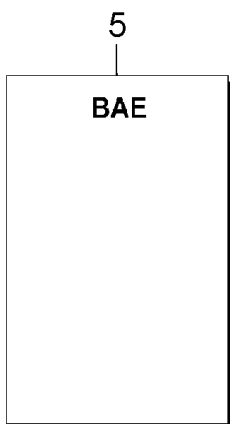
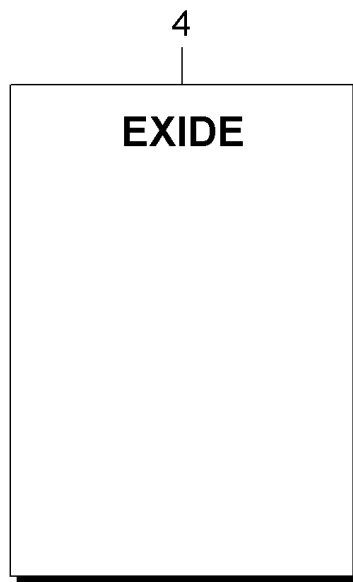
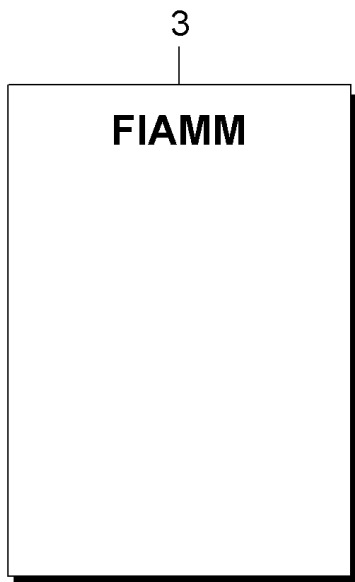
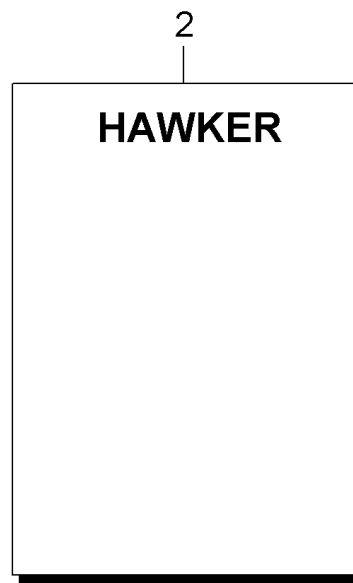
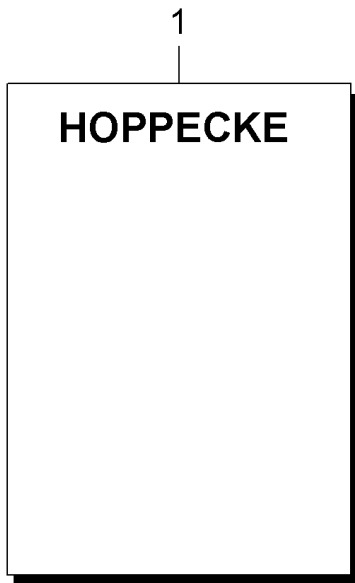
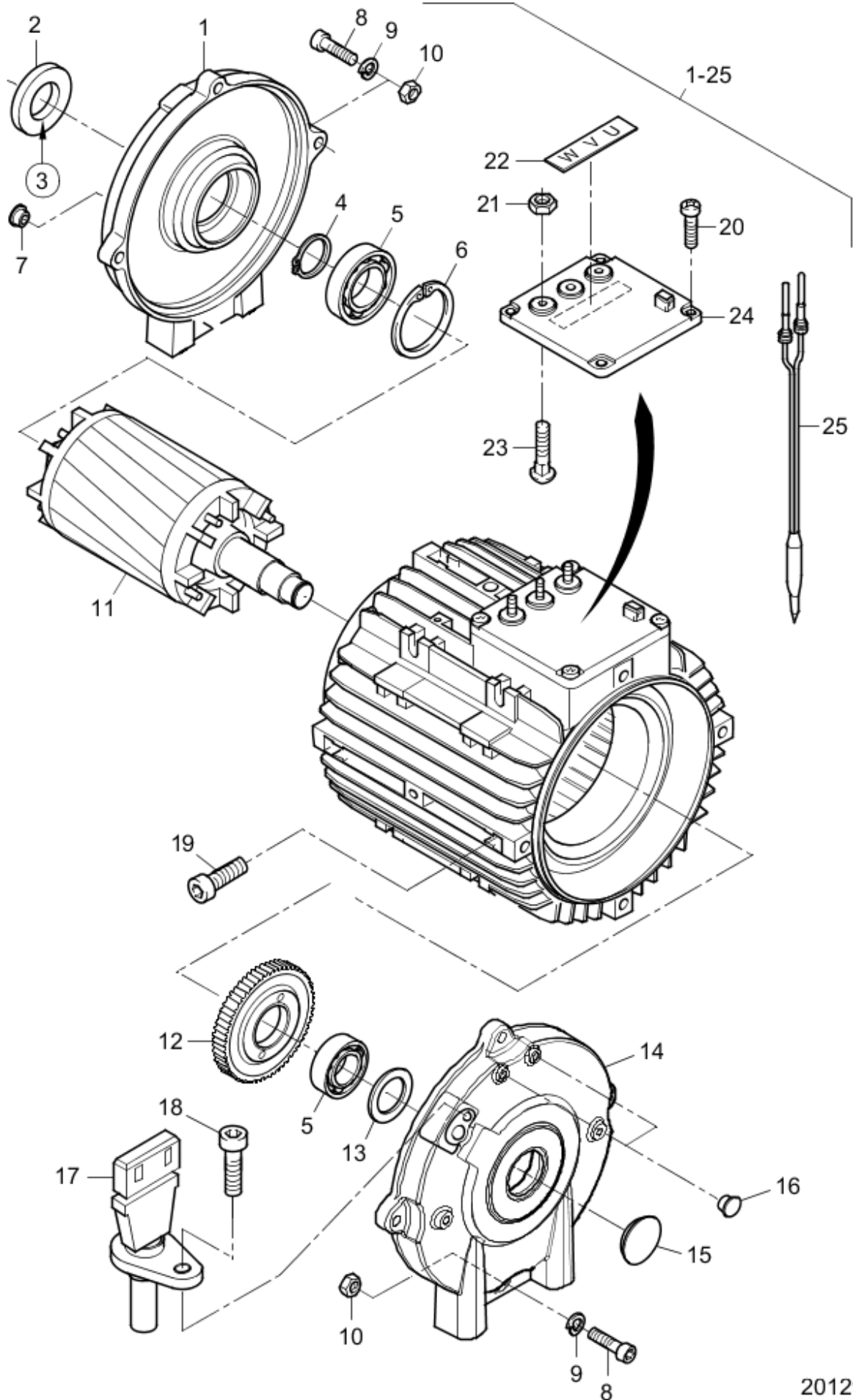


Fig	Part-No.	Qty.	Description	Remark	validity	trucks
1	0170186		OPERAT. INSTRUCTIONS	Hoppecke		
2	0170187		OPERAT. INSTRUCTIONS	HAWKER		
3	0170188		OPERAT. INSTRUCTIONS	FIAMM		
4	0170189		OPERAT. INSTRUCTIONS	EXIDE		
5	0170190		OPERAT. INSTRUCTIONS	BAE		
6	50988011640		UM	INSTRUCTION MANUAL STILL / MIDAC		
7	50988011641		UM	INSTRUCTION MANUAL TAB		
8	50988011642		UM	INSTRUCTION MANUAL OERLIKON		

Fig	Part-No.	Qty.	Description	Remark	validity	trucks
▶			TRACTION MOTOR	right		
▶			TRACTION MOTOR	left		
▶			LIFT MOTOR ASSY.			

Fig	Part-No.	Qty.	Description	Remark	validity	trucks
1-	28563500507	1	TRACTION MOTOR ASSY.			

Fig	Part-No.	Qty.	Description	Remark	validity	trucks
1-	28563500506	1	TRACTION MOTOR ASSY.			



20129

Fig	Part-No.	Qty.	Description	Remark	validity	trucks
1-25	56353500700	1	LIFT MOTOR ASSY.			
1	3003575510	1	BEARING SHIELD			
2	0171252	1	SHAFT SEAL			
3	0163488		LUBRICANT	225 g tube lithium base grease for roller bearings		
4	4499823	1	LOCKING RING			
5	9503004698	2	GROOVED BALL BEARING			
6	0502376	1	LOCKING RING			
7	0511642	1	PLUG			
8	0502123	8	SOCKET HEAD SCREW			
9	0500952	8	DETENT RING			
10	8003272	8	NUT HEXAGON			
11	3003575514	1	ROTOR			
12	0171397	1	RING			
13	0522293	1	DISC SPRING			
14	3003575512	1	BEARING SHIELD			
15	0254715	1	CAP			
16	0511643	2	PLUG			
17	7917415637	1	SENSOR	transmitter impulse		
18	0171449	1	CHEESE-HEAD SCREW	secure with Loctite 243		
19	9136362293	1	THREADED PIN			
20	0526189	4	OVAL HEAD SCREW			
21	0172450	4	HEXAGON NUT			
22	0172580	1	PLATE			
23	9027068193	3	COACH BOLT			
24	0009182566	1	COVER			
25	0172423	1	CABLE TREE	Reparatursatz für Temperatursensor		