

⚠ Read this handbook thoroughly and understand the whole information contained before trying to operate, inspect and service your machine!

M
O
D
E
L

S
V
5
0
5
-
I

S
E
R
I
E
S

**OPERATING &
MAINTENANCE
INSTRUCTIONS**

SAKAI HEAVY INDUSTRIES, LTD.

**VIBRATING
ROLLER**

MODEL

SV505-I Series

SV505D-I

SV505T-I SV505TF-I

From SV505D-I → VSV16D - 00000
SV505T-I → VSV16T - 00000
SV505TF-I → VSV16T - 00000

SAKAI®

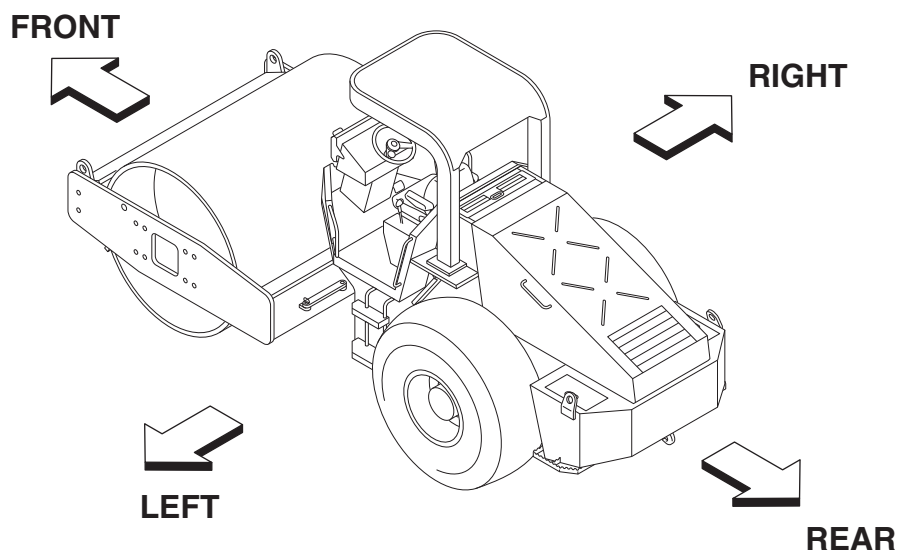
PREFACE

This operator's manual serves as a guide for the use of your Sakai SV505-I Series Vibrating Roller for those who are new to the machine, and also for the people who have experience in using the Machine and want to refresh their knowledge for the machine.

Read this manual thoroughly and try to fully understand the information before operating your machine. Keep this handbook at hand whenever you do your work.

The main subjects of this manual are:

(1) Basic precautions for safety, (2) Operation, (3) Daily maintenance and (4) Specifications. For operation and maintenance of the engine, refer to the Engine Instruction Manual furnished separately. Descriptions in this manual can differ from the machine instructions of your machine due to the results of the investigation and improvement in its design. If you have any inquiry regarding your Machine or this manual, contact our distributors.



CONTENTS

PREFACE

MACHINE AND ENGINE IDENTIFICATION NUMBERS 1

SAFETY NOTICES..... 2

1. BASIC PRECAUTIONS FOR SAFETY 4

1.1 General Precautions 4

1.2 Preparation for Safe Operation..... 6

1.3 Before Starting the Engine..... 7

1.4 After Starting the Engine..... 8

1.5 During operation 8

1.6 Loading and Unloading..... 10

1.7 Transportation..... 11

1.8 Handling the Battery 11

1.9 Towing 12

1.10 Before Servicing 13

1.11 During Servicing 14

1.12 Safety Decals..... 16

2. OPERATION 18

2.1 Instruments and Controls..... 18

2.1.1 Operator's station..... 18

2.1.2 Gauges, indicator lamps and warning lamps 19

2.1.3 Switches..... 22

2.1.4 Operating levers / pedals 24

2.1.5 Unloader valve 25

2.1.6 Fuse box 26

2.2 Handling and Adjustments..... 26

2.2.1 Seat adjustment 26

2.2.2 Scraper adjustment and replacement 26

2.2.3 Disengaging the brake when towing 27

2.2.4 Handling of Diagnostics On / Off switch and Increment /
Set-Decrement / Resume switch..... 28

2.3 Operation..... 29

2.3.1 Before-starting inspection 29

2.3.2 Starting the engine 30

2.3.3 After starting the engine 31

2.3.4 Traveling 32

2.3.5 Stopping / Parking..... 33

2.3.6 Stopping the engine 34

2.3.7 Check after stopping the engine 34

2.4 Vibratory Operation..... 35

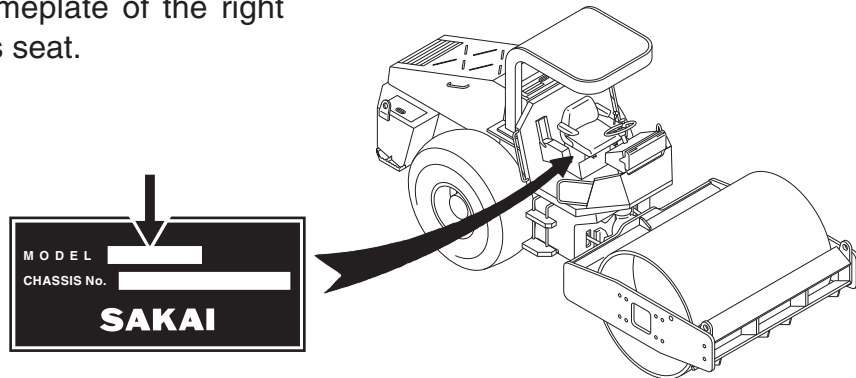
2.5	Precautions for Work	36
2.5.1	Compaction operation	36
2.5.2	When going downhill	36
2.5.3	On a slope	36
2.6	Applicable Jobs.....	36
2.7	After Operation	37
2.8	Loading and Unloading.....	38
2.8.1	Use of a trailer equipped with a winch	38
2.8.2	Self-propelling	39
2.9	After Loading the Machine	40
2.10	Transportation.....	40
2.11	Operation in Cold Weather	40
2.11.1	Fuel oil and grease.....	40
2.11.2	Coolant.....	41
2.11.3	Battery.....	42
2.12	When the Cold Season is Over	43
2.13	For a Long Storage Period	43
2.14	During the Storage Period	43
2.15	When the Battery Has Discharged	44
2.15.1	Connection and disconnection of booster cables.....	44
3.	PERIODICAL MAINTENANCE	46
3.1	Precautions.....	46
3.1.1	Lifting the machine on a hoist	48
3.2	Walk-around Checking	49
3.3	Periodical Maintenance Points	50
3.4	Maintenance Procedure.....	52
(1)	Every 10 hours or daily	52
(2)	Every 50 hours	53
(3)	Every 250 hours	54
(4)	Every 500 hours	57
(5)	Every 1000 hours	58
(6)	As required.....	61
3.5	Feeding Water and Lubricants.....	63
3.6	Electric Wiring Diagram	65
4.	SPECIFICATIONS	67

MACHINE AND ENGINE IDENTIFICATION NUMBERS

When ordering parts or making inquiries about your machine, the following information is requested:

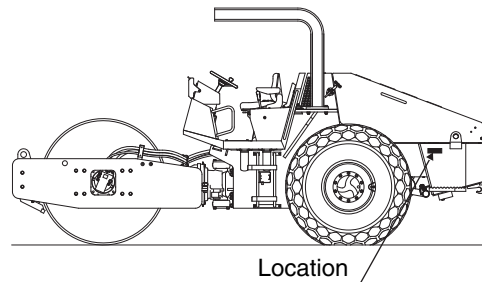
(1) Machine model

Indicated on the nameplate of the right side of the operator's seat.

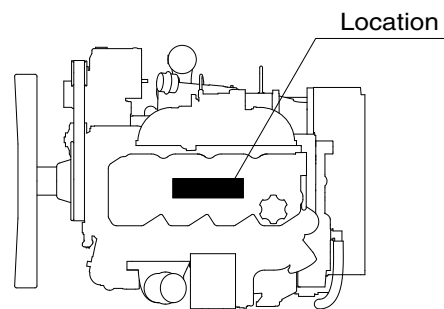


(2) Machine serial number

SV505D-I ⇨ VSV16D - ○○○○○
 SV505T-I ⇨ VSV16T - ○○○○○
 SV505TF-I ⇨ VSV16T - ○○○○○



(3) Engine serial number









SAFETY NOTICES

SAFETY NOTICES

For the safe use of your machine, correct handling and periodical maintenance are of utmost importance. Thoroughly read the safety precautions described in this manual. Do not attempt to operate and maintain your machine until you gain a full understanding of these safety statements.

This manual covers the proper and safe method of driving and handling of this machine for its intended use. When this machine is used a manner, other than that covered in this manual, you must assume responsibility for your own personal safety.

In this manual and on the machine, you will find safety notices. Each safety notice starts with a signal word as shown below:

- | | |
|--|--|
|  DANGER | Denotes that there is an extreme hazard. If you fail to take proper precautions, it is highly likely that you could be killed or seriously injured (The color of the symbol  is red). |
|  WARNING | Denotes that there is a hazard. If you fail to take proper precautions, you could be killed or seriously injured (Symbol  is orange). |
|  CAUTION | Calls attention to safety practices. If you fail to take proper precautions, you could be injured or cause damage to the machine (Symbol  is yellow). |