

INDEX OF SECTIONS

- SECTION A. ENGINE.
- B. LUBRICATION.
- C. FUEL AND CARBURATION.
- D. COOLING SYSTEM.
- E. PROPELLER SHAFT.
- F. BRAKES.
- G. FRONT SUSPENSION.
- H. REAR SUSPENSION.
- J. REAR AXLE.
- K. STEERING.
- L. ELECTRICAL AND IGNITION.
- M. EXHAUST SYSTEM.
- N. FRAME.
- P. BODY.
- Q. CLUTCH (SYNCHROMESH GEARBOX).
- R. GEARBOX (SYNCHROMESH).
- S. TOOLS - SPARES.
- T. STANDARD PARTS.

SPARES SCHEDULE

PREFACE

This schedule of spare parts is for Rolls-Royce and Bentley S.I type cars,

Silver Cloud 'D' Series and onwards.

Bentley 'S' Type 'E' Series and onwards.

Bentley Continental 'D' Series and onwards.

Silver Cloud, Long Wheel Base.

Bentley 'S' Type, Long Wheel Base.

For the purpose of this schedule, the car is broken down into clearly defined sections. Each section being divided into sub-sections of correlated items and assemblies.

The sub-sections are detailed and illustrated on each page. Where an alteration or modification has been made to the car and affecting a sub-section, this is shown on a following page with the appropriate chassis numbers.

The illustrations and text are itemized for easy reference. A major assembly is printed in capitals with the parts which go to make up the assembly indented to the right. All "Standard Parts" which are common to many sections, such as bolts, nuts and washers, etc., are printed in italics.

NOTES

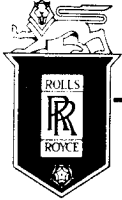
Certain abbreviations are used in the text of the Schedule as set out below.

- R.H. Right-hand. In all cases this means the right-hand side of the car as viewed from the rear looking forwards.
- L.H. Left-hand. Remarks as for R.H.
- R.C. Right Control. The item is only applicable when the driving controls are on the R.H. side of the car.
- L.C. Left Control. Remarks as for R.C.
- L.W.B. Long Wheelbase Cars.
- ALT. Alternatives.
- O/D. Outside diameter.
- I/D. Internal diameter.
- O.B. Oil Bath.
- S/A. Sub-assembly.

Adjusting washers and Sealing rings, the measurement given is the thickness.

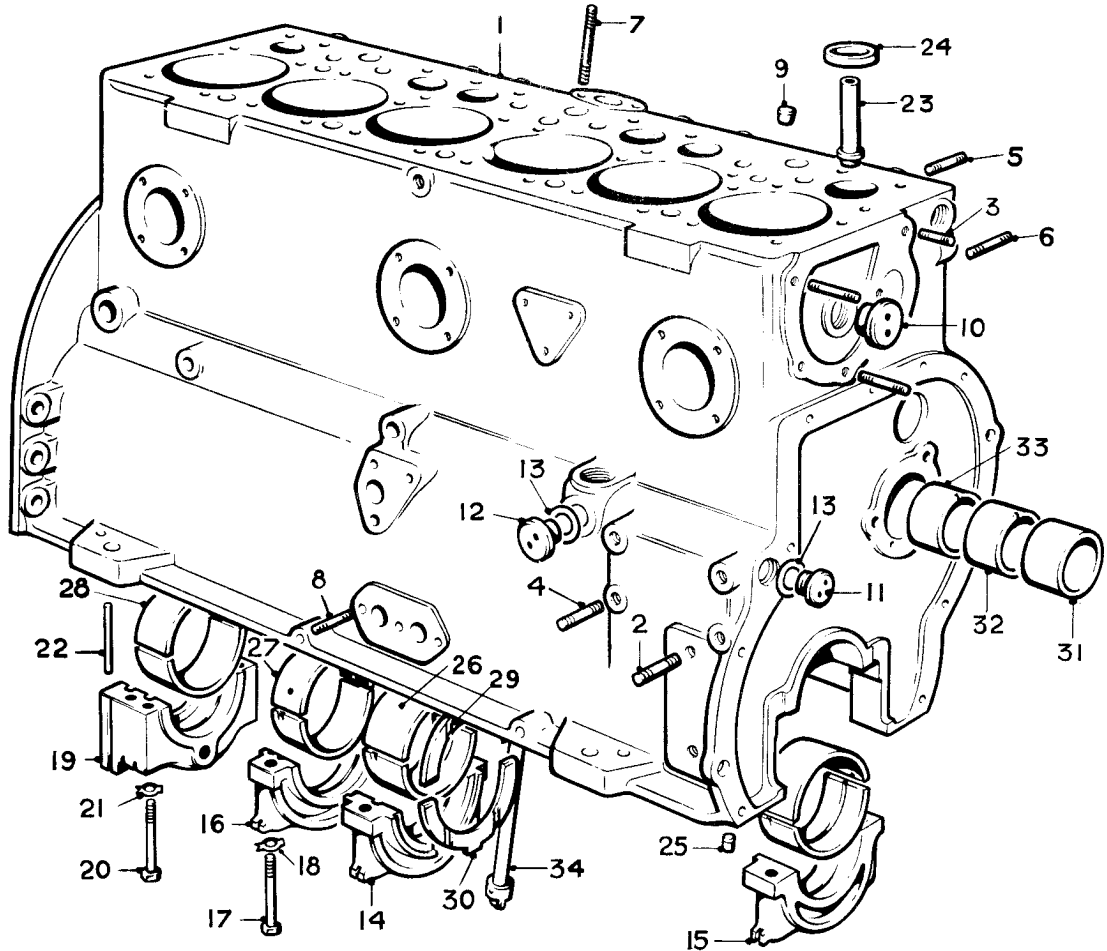
SECTION A
ENGINE

Title	Assembly	Page No.
CRANKCASE	CYLINDER BLOCK	A. 1
		A. 2
	FRONT FACE	A. 3
		A. 4
	REAR FACE	A. 5
		A. 6
	L.H. FACE	A. 6
		A. 7
	R.H. FACE	A. 7
	A. 8	
	LOWER HALF	A. 9
CYLINDER HEAD		A. 10
		A. 11
		A. 12
		A. 13
CRANKSHAFT	RH. 278	A. 14
	RH. 279	A. 15
CONNECTING RODS AND PISTONS		A. 16
SPRING DRIVE	RH. 278 & RH. 279	A. 17
CAM SHAFT		A. 18
ROCKER SHAFT		A. 18
VALVE MECHANISM		A. 19
WHEEL CASE		A. 20
OIL PUMP		A. 21
RELIEF VALVE		A. 22
THERMOSTAT AND CASING		A. 23
FLYWHEEL	RH. 278	A. 24
	RH. 279	A. 24



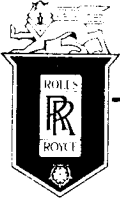
SPARES schedule

SILVER CLOUD AND BENTLEY 'S' TYPE



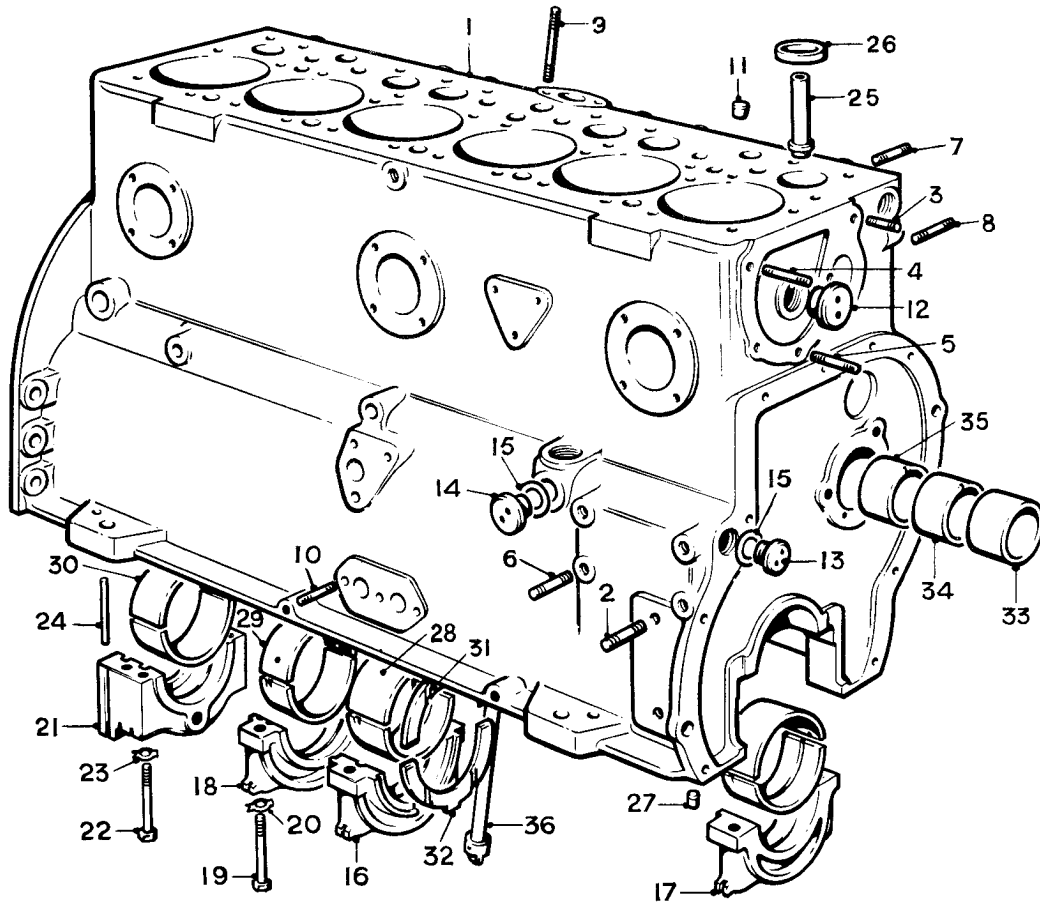
Ref.	Part No.	Description	No off	Ref.	Part No.	Description	No off
	UE.2745	CRANKCASE UPPER HALF ASSY.	1	(19)	UE.456	Cap, main bearing, rear	1
(1)	UE.2018	Crankcase	1	(20)	UE.699	Setscrew, rear bearing cap	4
(2)	UA.801/Z	Stud, mounting foot	4	(21)	KB.7107/R	Washer, lock, setscrew	4
(3)	UA.754/Z	Stud, 1.375", water pump	2	(22)	RE.7144	Oil seal, rear cap	2
(4)	UA.752/Z	Stud, dynamo	4	(23)	RE.5890	Guide, exhaust valve	6
	UA.764/Z	Stud, 2.625" steering pump	1	(24)	RE.23855	Insert, valve seat, standard	6
(5)	RE.16814	Stud, exhaust manifold	12		RE.23983	Insert, valve seat, .010" S/A	6
	UA.755/Z	Stud, oil pump	1	(25)	RE.10416	Dowel, lower half	2
(6)	UA.413/Z	Stud, tappet cover	4	(26)	RE.14383	Bush, main bearing, centre	2
	UA.1201/Z	Stud, breather pipe	1		RE.22096	Bush, main bearing, centre .010" U/S	2
(7)	UA.713/Z	Stud, distributor	2		RE.22097	Bush, main bearing, centre .020" U/S	2 Alt
(8)	RE.16846	Stud, relief valve	3		RE.22098	Bush, main bearing, centre .030" U/S	2
	KB.251/Z	Stud, drain pipe	1		RE.22099	Bush, main bearing, centre .040" U/S	2
(9)	RE.6156	Plug, dipstick boss	1	(27)	RE.14385	Bush, main bearing, inter.	10
	UA.651/Z	Plug, .625", core	4		RE.22100	Bush, main bearing, inter. .010" U/S	10
	UA.653/Z	Plug, .875", core	4		RE.22101	Bush, main bearing, inter. .020" U/S	10 Alt
	KB.1092/R	Washer, .875" plug	4		RE.22102	Bush, main bearing, inter. .030" U/S	10
(10)	UA.655/Z	Plug, 1.125", core	1		RE.22103	Bush, main bearing, inter. .040" U/S	10
(11)	UA.552/R	Plug, .750", oil gallery	2	(28)	RE.14387	Bush, main bearing, rear	2
(12)	UA.552/R	Plug, .750", filter boss	1		RE.22104	Bush, main bearing, rear .010" U/S	2
(13)	KB.1091/R	Washer, .750", plug	3		RE.22105	Bush, main bearing, rear .020" U/S	2 Alt
(14)	UE.387	Cap, main bearing, centre	1		RE.22106	Bush, main bearing, rear .030" U/S	2
(15)	UE.362	Cap, main bearing, front	1		RE.22107	Bush, main bearing, rear .040" U/S	2
(16)	UE.388	Cap, main bearing, inter.	4	(29)	RE.14389	Washer, thrust bearing, top	2
(17)	UE.700	Setscrew, main bearing cap	12	(30)	RE.14390	Washer, thrust bearing, bottom	2
(18)	KB.7108/R	Washer, lock, setscrew	12	(31)	RE.210	Bush, camshaft bearing, front	1
				(32)	EB.3892	Bush, camshaft bearing, inter.	2
				(33)	EB.4146	Bush, camshaft bearing, rear	1
				(34)	RE.4920	Shaft, distributor driving	1

CRANKCASE—CYLINDER BLOCK



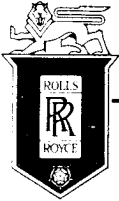
SPARES schedule

SILVER CLOUD AND BENTLEY 'S' TYPE



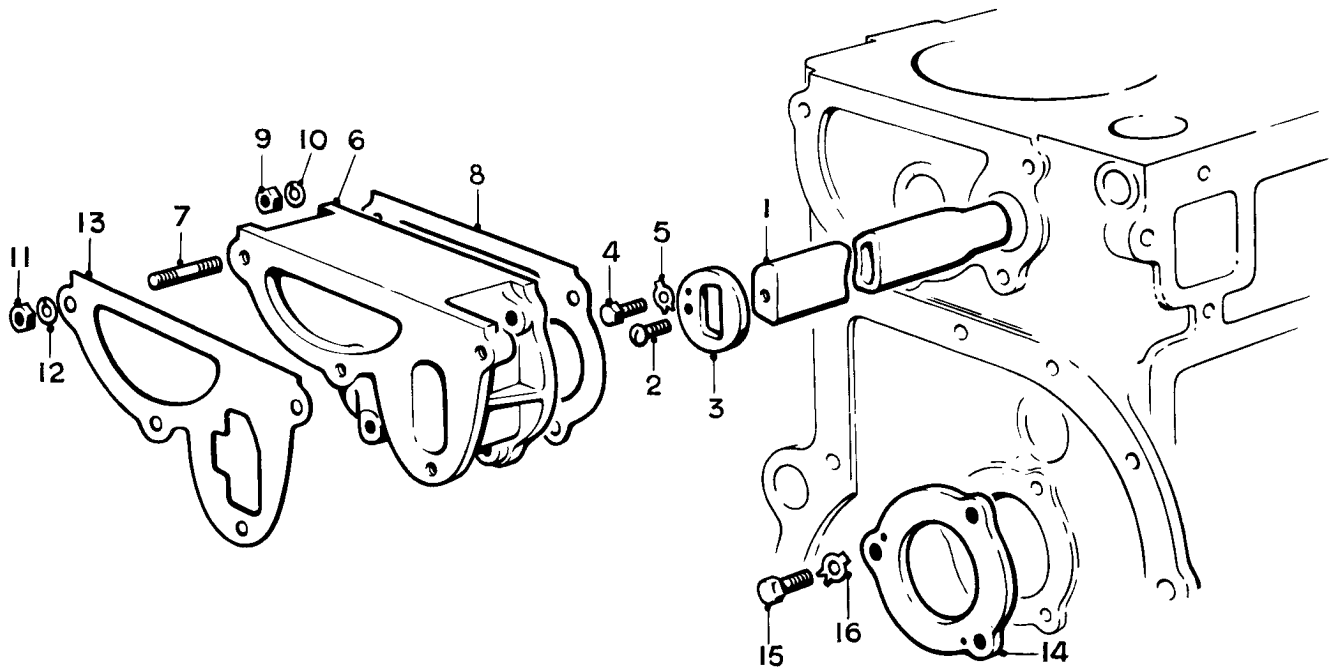
Ref.	Part No.	Description	No off	Ref.	Part No.	Description	No off
	UE.4327	CRANKCASE UPPER HALF ASSY. (For cars with interior cooling)	1	(21)	UE.456	Cap, main bearing, rear	1
(1)	UE.2018	Crankcase	1	(22)	UE.699	Setscrew, rear bearing cap	4
(2)	UA.801/Z	Stud, mounting foot	4	(23)	KB.7107/R	Washer, lock, setscrew	4
(3)	UA.754/Z	Stud, 1.375", water pump	2	(24)	RE.7144	Oil seal, rear cap	2
(4)	UA.772/Z	Stud, 4.250", water pump	1	(25)	RE.5890	Guide, exhaust valve	6
(5)	UA.767/Z	Stud, 3.00", water pump	2	(26)	RE.23855	Insert, valve seat, standard	6
(6)	UA.752/Z	Stud, dynamo	4		RE.23983	Insert, valve seat, .010" S/A	6
	UA.764/Z	Stud, 2.625" steering pump	1	(27)	RE.10416	Dowel, lower half	2
(7)	RE.16814	Stud, exhaust manifold	12	(28)	RE.14383	Bush, main bearing, centre	2
	UA.755/Z	Stud, oil pump	1		RE.22096	Bush, main bearing, centre .010" U/S	2
(8)	UA.413/Z	Stud, tappet cover	4		RE.22097	Bush, main bearing, centre .020" U/S	2 Alt
	UA.1201/Z	Stud, breather pipe	1		RE.22098	Bush, main bearing, centre .030" U/S	2
(9)	UA.713/Z	Stud, distributor	2		RE.22099	Bush, main bearing, centre .040" U/S	2
(10)	RE.16846	Stud, relief valve	3	(29)	RE.14385	Bush, main bearing, inter.	10
	KB.251/Z	Stud, drain pipe	1		RE.22100	Bush, main bearing, inter. .010" U/S	10
(11)	RE.6156	Plug, dipstick boss	1		RE.22101	Bush, main bearing, inter. .020" U/S	10 Alt
	UA.651/Z	Plug, .625", core	4		RE.22102	Bush, main bearing, inter. .030" U/S	10
	UA.653/Z	Plug, .875", core	4		RE.22103	Bush, main bearing, inter. .040" U/S	10
	KB.1092/R	Washer, .875" plug	4	(30)	RE.14387	Bush, main bearing, rear	2
(12)	UA.655/Z	Plug, 1.125", core	1		RE.22104	Bush, main bearing, rear .010" U/S	2
(13)	UA.552/R	Plug, .750", oil gallery	2		RE.22105	Bush, main bearing, rear .020" U/S	2 Alt
(14)	UA.552/R	Plug, .750", filter boss	1		RE.22106	Bush, main bearing, rear .030" U/S	2
(15)	KB.1091/R	Washer, .750", plug	3		RE.22107	Bush, main bearing, rear .040" U/S	2
(16)	UE.387	Cap, main bearing, centre	1	(31)	RE.14389	Washer, thrust bearing, top	2
(17)	UE.362	Cap, main bearing, front	1	(32)	RE.14390	Washer, thrust bearing, bottom	2
(18)	UE.388	Cap, main bearing, inter.	4	(33)	RE.210	Bush, camshaft bearing, front	1
(19)	UE.700	Setscrew, main bearing cap	12	(34)	EB.3892	Bush, camshaft bearing, inter.	2
(20)	KB.7108/R	Washer, lock, setscrew	12	(35)	EB.4146	Bush, camshaft bearing, rear	1
				(36)	RE.4920	Shaft, distributor driving	1

CRANKCASE—CYLINDER BLOCK



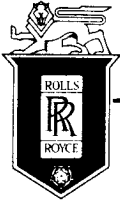
SPARES schedule

SILVER CLOUD AND BENTLEY 'S' TYPE



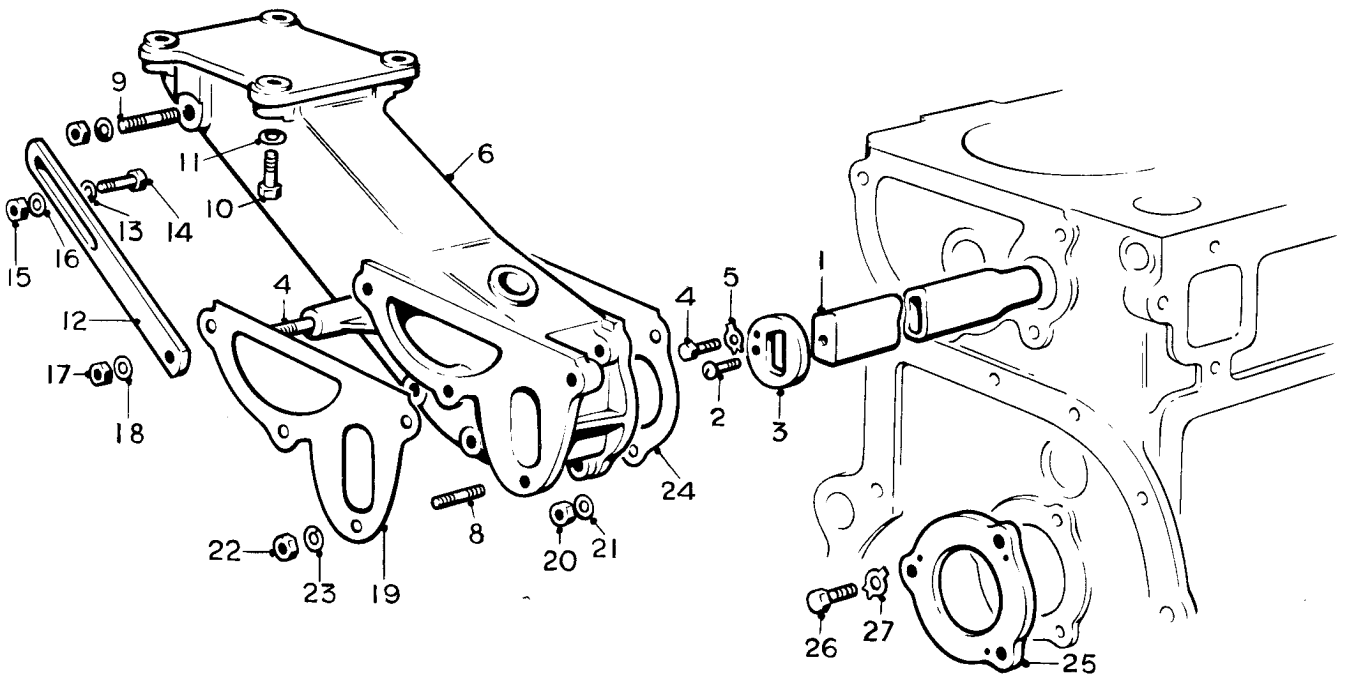
Ref.	Part No.	Description	No off
(1)	RE.20949	Water Gallery	1
(2)	UA.3052	Screw, water gallery	1
(3)	UE.524	Plate, end, gallery	1
(4)	UA.1501/Z	Setscrew, end plate	1
(5)	KB.7104/R	Tab washer, setscrew	1
(6)	UE.420	ADAPTOR, WATER PUMP, ASSY.	1
(7)	UA.909/Z	Stud	4
(8)	RE.16323	Joint, adaptor to crankcase	1
(9)	UA.352/Z	Nut, adaptor	5
(10)	K.9009/Z	Washer, spring, adaptor	5
(11)	UA.302/Z	Nut, water, pump	4
(12)	K.9009/Z	Washer, spring, pump	4
(13)	RE.5772	Joint, water pump to adaptor	1
(14)	RE.142	Thrust plate, camshaft	1
(15)	UA.103/Z	Setscrew, thrust plate	3
(16)	KB.7106/Z	Washer, tab, setscrew	3

CRANKCASE—FRONT FACE



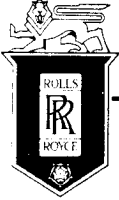
SPARES schedule

SILVER CLOUD AND BENTLEY 'S' TYPE



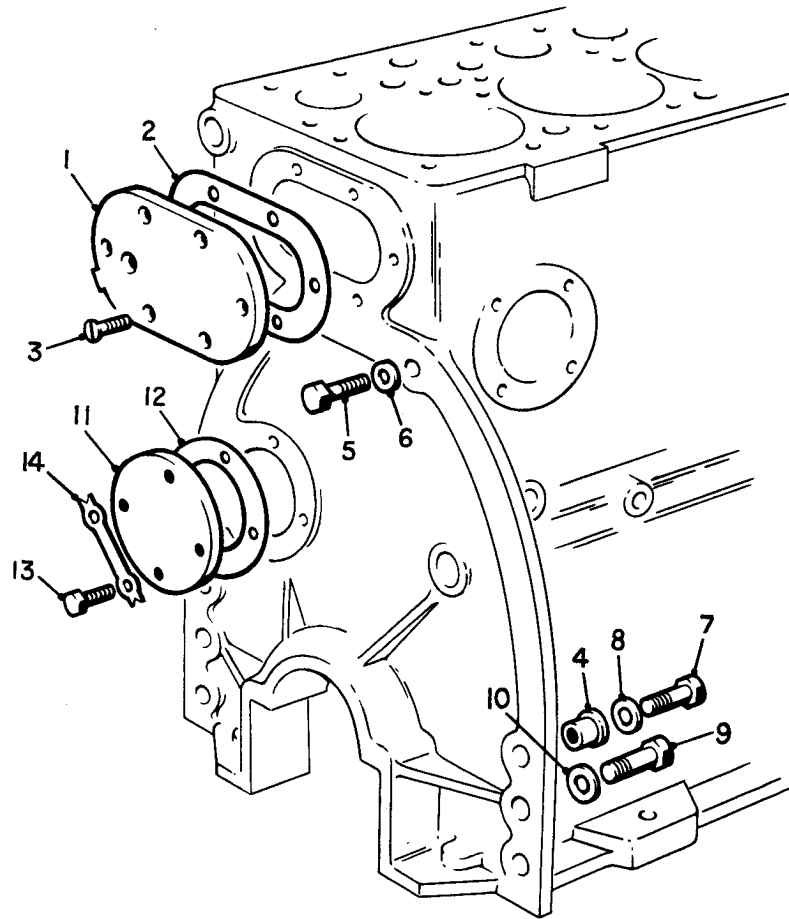
Ref.	Part No.	Description	No off
(1)	RE.20949	Water Gallery	1
(2)	UA.3052/Z	Screw, water gallery	1
(3)	UE.524	Plate, end, gallery	1
(4)	UA.1501/Z	Setscrew, end plate	1
(5)	KB.7104/R	Tab washer, setscrew	1
(6)	UE.2810	ADAPTOR, WATER PUMP, ASSY.	1
(7)	UA.903/Z	Stud, swivel arm	1
(8)	UA.909/Z	Stud, water pump	3
(9)	UA.953/Z	Stud, strut	1
(10)	UE.3738	Bolt, mounting, compressor	4
(11)	K.9010/Z	Washer, bolt	4
(12)	UE.4101	Strut, adjusting	1
(13)	K.9009/Z	Washer, strut to lever	1
(14)	UA.153/Z	Setscrew, strut to lever	1
(15)	RE.22428	Nut, lever	1
(16)	K.9010/Z	Washer, nut	1
(17)	UA.302/Z	Nut, adjusting strut	1
(18)	K.9009/Z	Washer, nut	1
(19)	RE.5772	Joint, adaptor to crankcase	1
(20)	UA.352/Z	Nut, pump adaptor	5
(21)	K.9009/Z	Washer, spring, nut	5
(22)	UA.302/Z	Nut, pump to adaptor	3
(23)	K9009/Z	Washer, spring, nut	3
(24)	UE.2948	Joint, pump to adaptor	1
(25)	RE.142	Thrust plate, camshaft	1
(26)	UA.103/Z	Setscrew, thrust plate	3
(27)	KB.7106/Z	Washer, tab, setscrew	3

CRANKCASE—FRONT FACE (Cars with interior cooling)



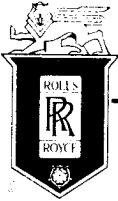
SPARES schedule

SILVER CLOUD AND BENTLEY 'S' TYPE



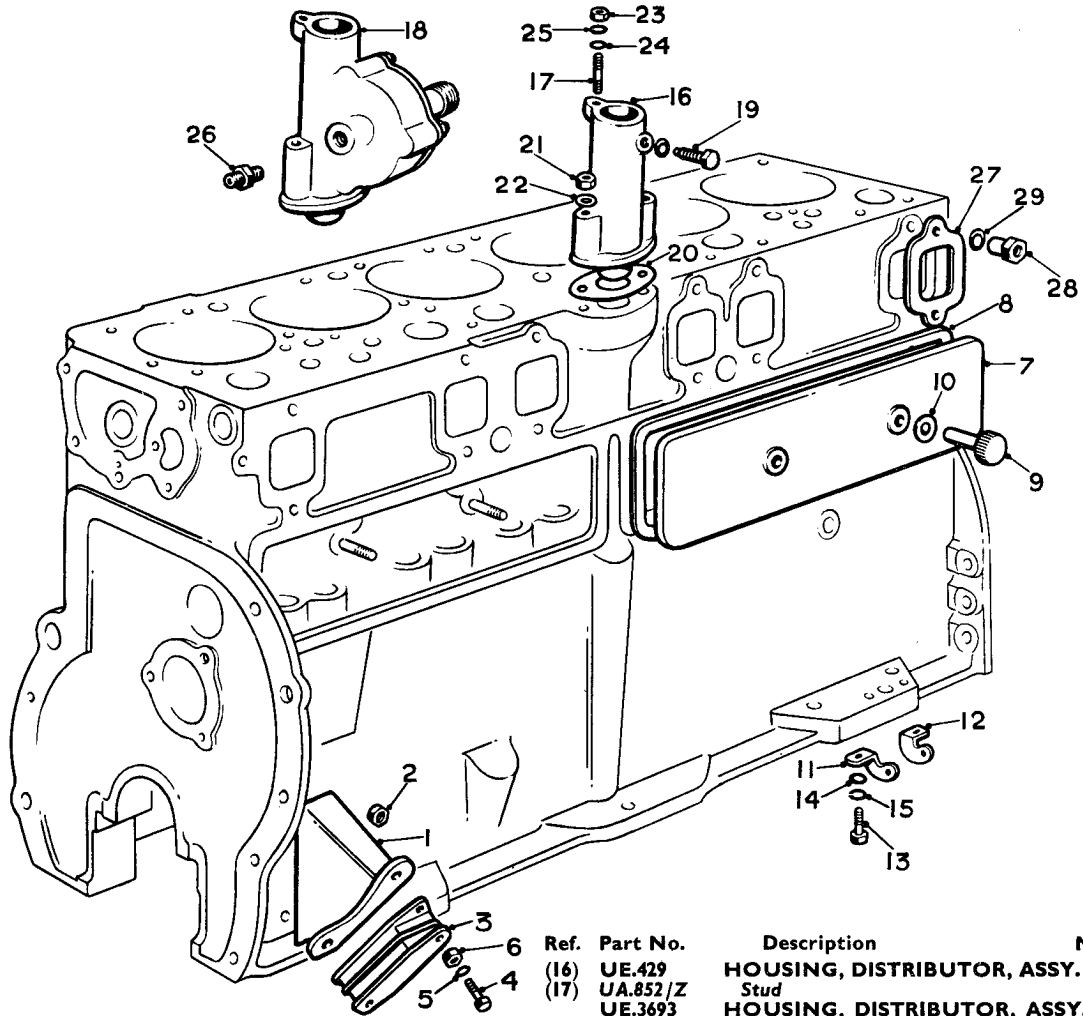
Ref.	Part No.	Description	No off
(1)	RE.20948	Cover, water jacket	1
(2)	RE.14031	Joint, cover	1
(3)	UA.3025/Z	Setscrew, cover	6
(4)	RE.14288	Dowel, clutch housing	2
(5)	UA.271/Z	Setscrew, clutch housing, top	2
	UA.264/Z	Setscrew, clutch housing, top ("Continental" only)	2
(6)	K.9011/Z	Washer, setscrew	2
(7)	UA.160/Z	Setscrew, .312" clutch housing, lower	2
(8)	UA.1252/Z	Washer, .312" setscrew	2
(9)	UA.258/Z	Setscrew, .437", clutch housing, lower	4
(10)	UA.1254/Z	Washer, .437" setscrew	4
(11)	RE.20848	Cover, camshaft rear bearing	1
(12)	RE.14292	Joint, cover	1
(13)	UA.104/Z	Setscrew, cover	4
(14)	RE.14029	Washer, tab, setscrew	2

CRANKCASE—REAR FACE



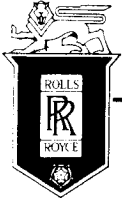
SPARES schedule

SILVER CLOUD AND BENTLEY 'S' TYPE



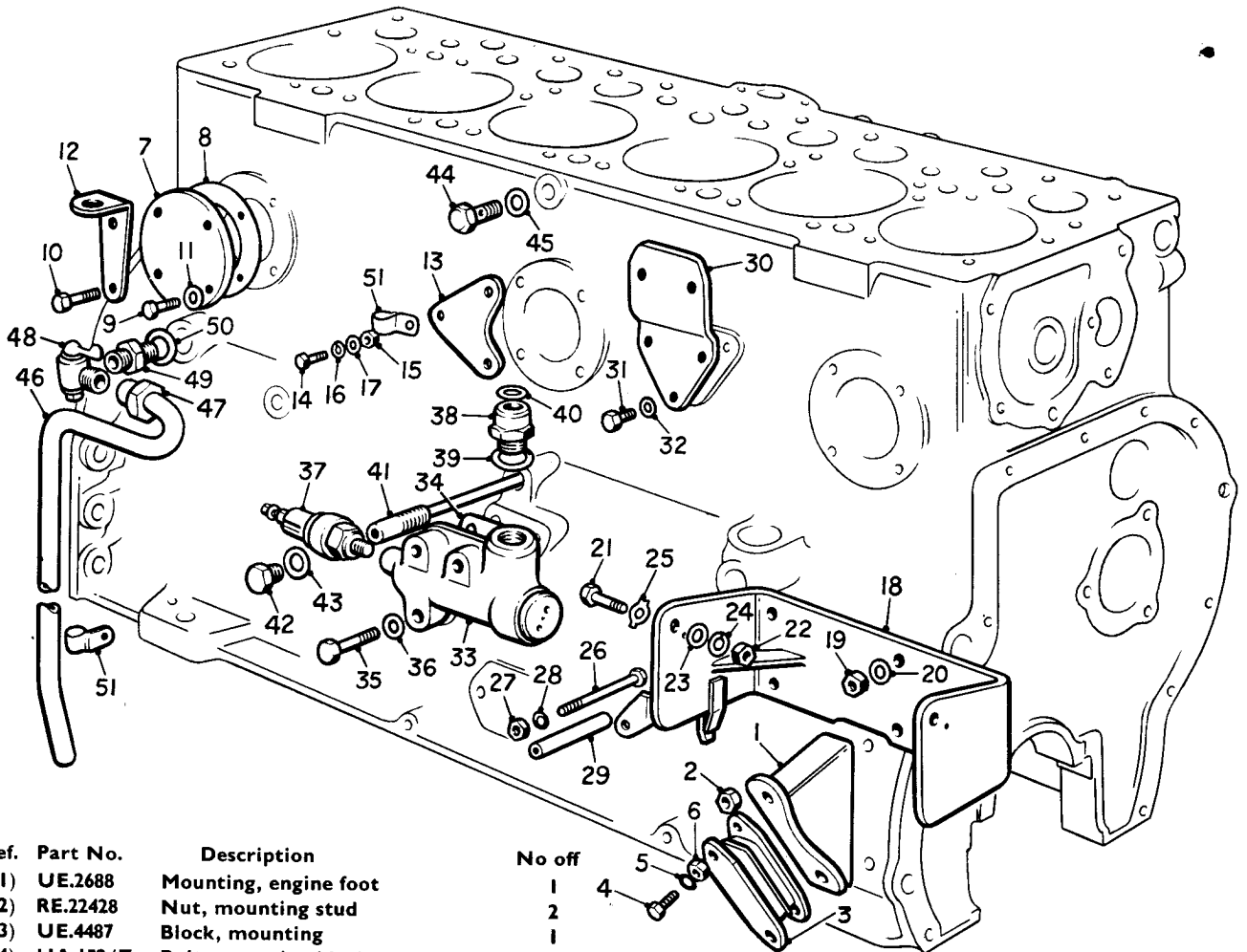
Ref.	Part No.	Description	No off	Ref.	Part No.	Description	No off
				(16)	UE.429	HOUSING, DISTRIBUTOR, ASSY.	1
				(17)	UA.852/Z	Stud	1
					UE.3693	HOUSING, DISTRIBUTOR, ASSY.	1
					UA.853/Z	Stud	1
				(18)	UE.2665	HOUSING, DISTRIBUTOR & TACHO DRIVE, ASSY.	1
						("Continental" only)	
					UE.4490	HOUSING, DISTRIBUTOR & TACHO DRIVE, ASSY.	1
						("Continental" 8.00 : 1 compression)	
					UE.3444	HOUSING, DISTRIBUTOR & TACHO DRIVE, ASSY.	1
					UE.3488	Union, oil supply	1
(1)	UE.2689	Mounting, engine foot	1	(19)	UE.412	Setscrew, dist. retaining	1
(2)	RE.22428	Nut, mounting stud	2	(20)	EB.4042	Joint, housing	1
(3)	UE.4487	Block, mounting	1	(21)	UA.301/Z	Nut, housing	2
(4)	UA.152/Z	Bolt, mounting block	4	(22)	K.9008/Z	Washer, nut	2
(5)	K.9009/Z	Washer, bolt	4	(23)	UA.351/Z	Nut, dist. clamping	1
(6)	UA.352/Z	Nut, bolt	4	(24)	K.4407/Z	Washer, plain nut	1
(7)	RE.15082	Cover, tappet	2	(25)	K.9008/Z	Washer, spring, nut	1
(8)	RE.15083	Joint, cover	2			Standard cars only	
(9)	UE.2834	Cap nut, tappet cover	4	(26)	UE.2662	Junction, oil supply	1
(10)	RF.3274	Washer, cap nut	4	(27)	UE.411	Joint, exhaust manifold	6
(11)	UE.1148	Bracket, exhaust stay	1	(28)	RE.14285	Nut, exhaust manifold	12
(12)	UE.1149	Bracket, exhaust stay	1	(29)	UA.1252/R	Washer, exhaust nut	12
(13)	UA.104/Z	Setscrew, bracket	2				
(14)	UA.1251/Z	Washer, plain, setscrew	2				
(15)	K.9008/Z	Washer, spring, setscrew	2				
	UE.485	Fulcrum, T/V control	1				
	K.4405/Z	Washer, fulcrum	1				
	K.9008/Z	Washer, spring, fulcrum	1				
	UE.402	Distance piece, fulcrum	1				
	KC.152/Z	Setscrew, fulcrum	1				
	K.9006/Z	Washer, setscrew	1				

CRANKCASE—L.H. FACE



SPARES schedule

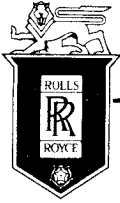
SILVER CLOUD AND BENTLEY 'S' TYPE



Ref.	Part No.	Description	No off
(1)	UE.2688	Mounting, engine foot	1
(2)	RE.22428	Nut, mounting stud	2
(3)	UE.4487	Block, mounting	1
(4)	UA.152/Z	Bolt, mounting block	4
(5)	K.9009/Z	Washer, bolt	4
(6)	UA.352/Z	Nut, bolt	4
(7)	RE.20848	Cover, water jacket	3
(8)	RE.14295	Joint cover	3
(9)	UA.104/Z	Setscrew, cover	8
(10)	UA.105/Z	Setscrew, cover and clips	4
(11)	KB.1076/R	Washer, setscrew	12
(12)	UE.2079	Bracket, petrol pipe	1
(13)	UE.2863	Bracket, carb. drain	1
(14)	KC.178/Z	Bolt, clip, drain	1
(15)	K.4307/Z	Nut, clips	2
(16)	K.9006/Z	Washer, spring, clips	2
(17)	K.4404/Z	Washer, plain, clips	2
(18)	UE.617	Bracket, dynamo mounting	1
(19)	UA.352	Nut, bracket	4
(20)	K.9009/Z	Washer, nut	4
(21)	UE.448	Bolt, dynamo pivot	2
(22)	UA.352/Z	Nut, bolt	2
(23)	UA.2002/Z	Washer, bolt	2
(24)	K.9009/Z	Washer, spring, bolt	2
(25)	KB.7107/Z	Washer, tab, pivot	2
(26)	UE.620	Stud, levers, dynamo bracket	1
(27)	K.4307/Z	Nut, stud	1
(28)	K.9006/Z	Washer, stud	1
(29)	UE.622	Distance piece, stud	1

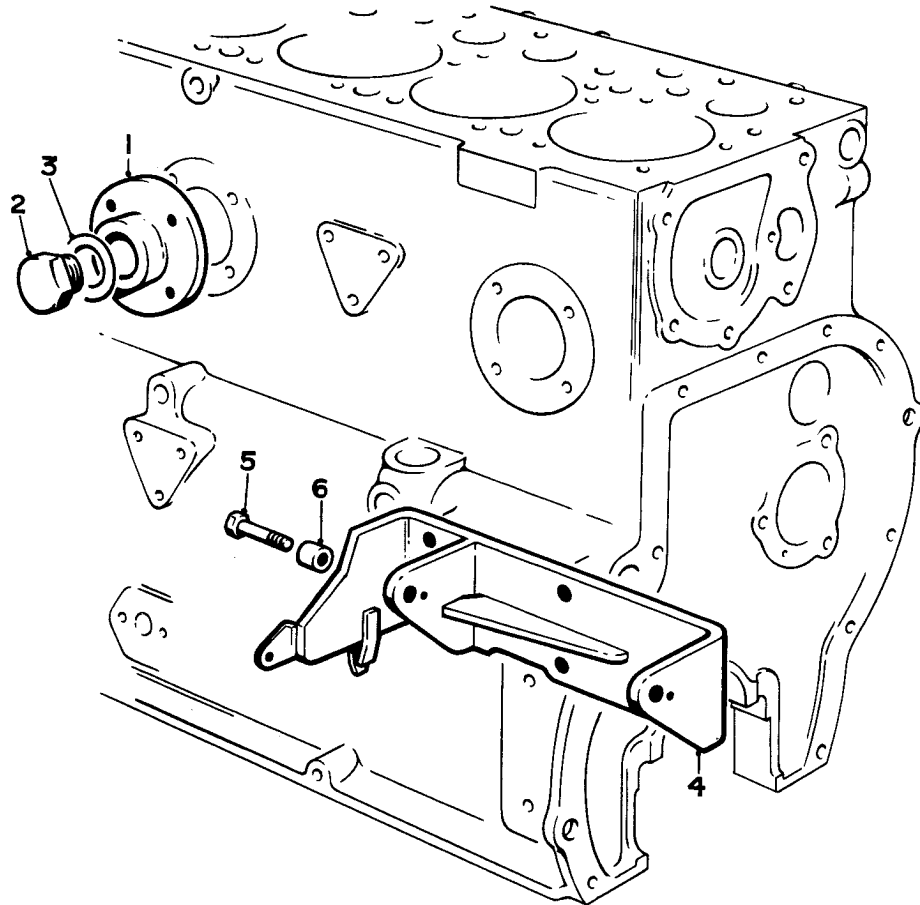
Ref.	Part No.	Description	No off
(30)	UE.434	Plate, oil filter	1
(31)	UA.103/Z	Setscrew, plate	3
(32)	K.9003/Z	Washer, setscrew	3
(33)	UE.2743	Connection, oil filter	1
(34)	UE.437	Joint, connection	1
(35)	UA.109/Z	Setscrew, connection	3
(36)	K.9008/Z	Washer, setscrew	3
(37)	RE.21917	Switch, oil pressure, carb. choke	1
(38)	UE.439	Union, oil filter pipe	1
(39)	KB.1186/R	Washer, union	1
(40)	KB.6205	Sealing ring, union	4
(41)	RE.14215	Jet, distributor, oil	1
(42)	UA.1159	Plug, jet	1
(43)	KB.1080/R	Washer, plug	1
(44)	RE.14445	Bolt, rocker, oil feed	1
		(Standard)	
	UE.2663	Bolt, rocker, oil feed	1
		("Continental" only)	
(45)	RE.3523	Washer, bolt	2
(46)	UE.842	Pipe, cylinder drain	1
(47)	RE.8817	Nut, pipe	1
(48)	UE.328	Tap, pipe	1
(49)	KB.5131/Z	Union, tap	1
(50)	KB.1098/R	Washer, union	1
(51)	UE.879	Clip, pipe	1

CRANKCASE—R.H. FACE



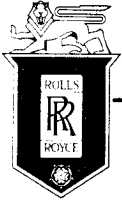
SPARES schedule

SILVER CLOUD AND BENTLEY 'S' TYPE



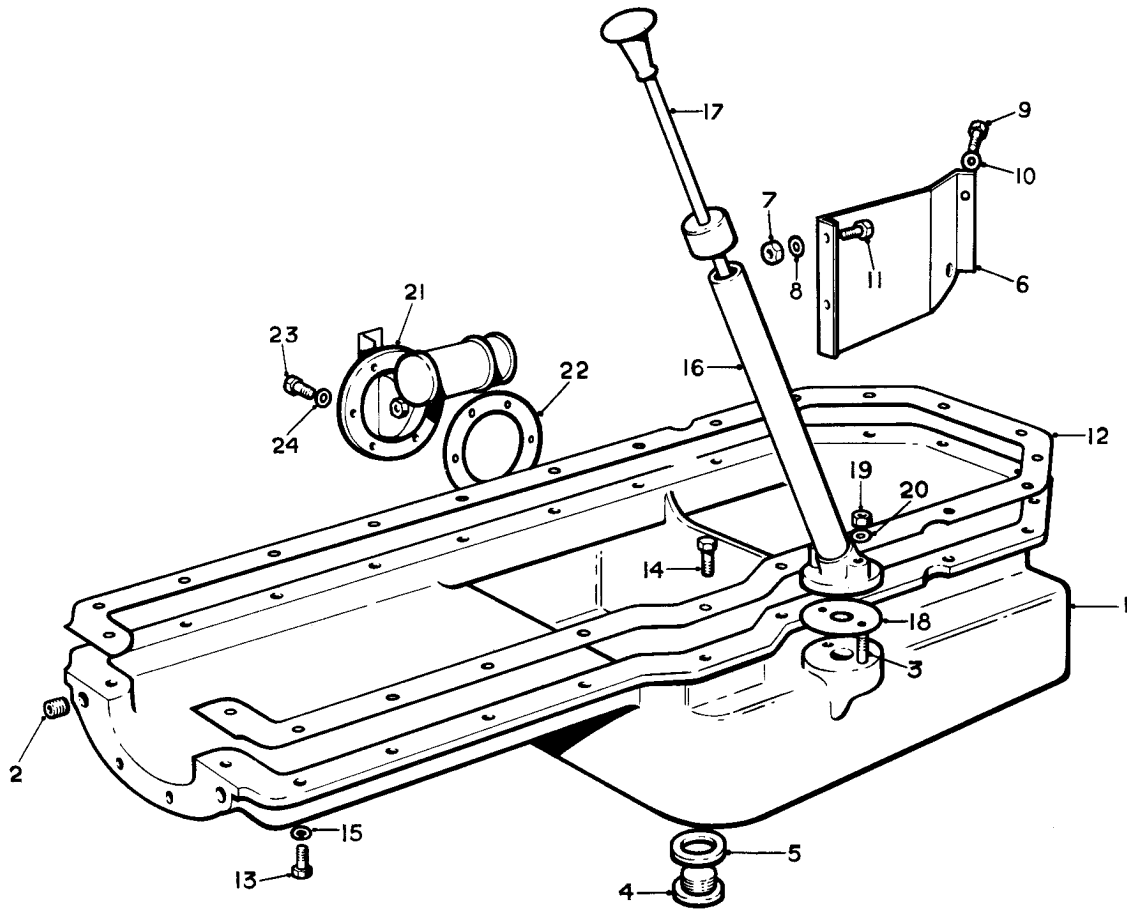
Ref.	Part No.	Description	No off
(1)	RE.20281	Adaptor, engine heater	1
(2)	RE.12762	Plug, adaptor	1
(3)	KB.1188/R	Washer, plug	1
(4)	UE.4415	Bracket, dynamo mounting	1 — Interior cooling
	UE.5284	Bracket, dynamo mounting	1 — Interior cooling with special switch gear
(5)	UE.448	Bolt, dynamo pivot	1
	UE.5198	Bolt, dynamo pivot	1 — Interior cooling
(6)	UE.5199	Distance piece, dynamo mounting	2

CRANKCASE—R.H. FACE SPECIAL PARTS



SPARES schedule

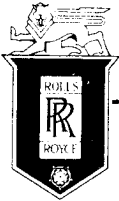
SILVER CLOUD AND BENTLEY 'S' TYPE



Ref.	Part No.	Description	No off
(1)	UE.6305	CRANKCASE SUMP, ASSY.	1
(2)	UA.501/Z	Insert, wheelcase fixing	2
(3)	UA.856/Z	Stud, dipstick	2
(4)	UG.526	Plug, drain	1
(5)	KB.1093/R	Washer, plug	1
(6)	UE.2744	Baffle, oil float	1
(7)	K.4006/Z	Nut, baffle	3
(8)	K.4404/Z	Washer, nut	3
(9)	KC.153/Z	Setscrew, baffle, front	1
(10)	RF.3264	Washer, setscrew	1
(11)	UA.1502/Z	Setscrew, baffle, web	1
(12)	UE.454	Joint, lower half	1
(13)	UA.154/Z	Setscrew, lower half	21
(14)	UA.155/Z	Setscrew, lower half	1
(15)	K.9009/Z	Washer, setscrew	22
(16)	UE.606	TUBE, DIPSTICK, ASSY.	1
(17)	UE.604	DIPSTICK, ASSEMBLY	1
	UE.4048	TUBE, DIPSTICK, ASSEMBLY	1
	UE.4164	DIPSTICK, ASSEMBLY	1
(18)	UE.2773	Joint, dipstick boss	1
(19)	UA.301/Z	Nut, dipstick	2
(20)	K.9008/Z	Washer, nut	2
(21)	DB.1870	Oil gauge	1
(22)	RF.8404	Joint, oil gauge	1
(23)	K.1807/Z	Screw, oil gauge	6
(24)	K.9005/Z	Washer, screw	6

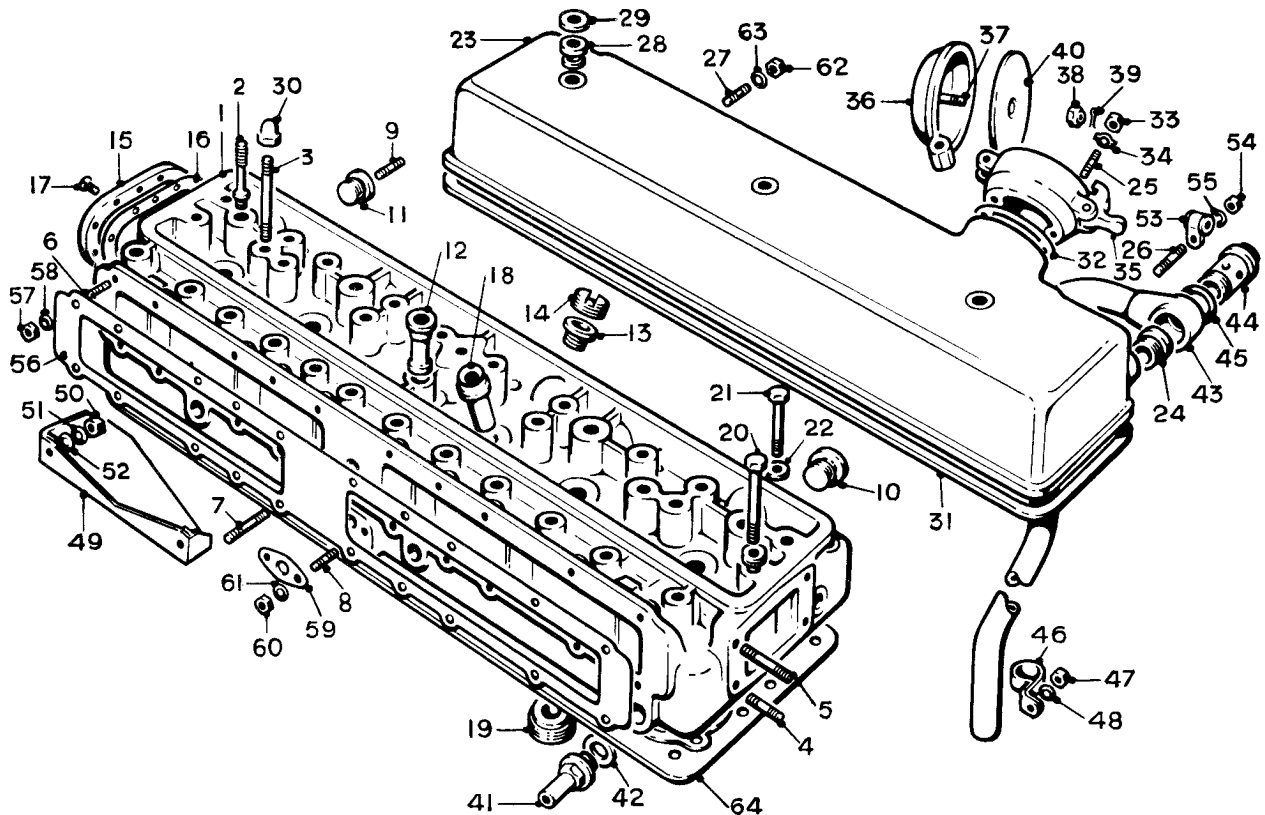
"Continental" with synchro gearbox

CRANKCASE - LOWER HALF



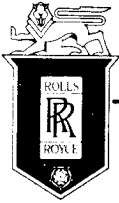
SPARES schedule

SILVER CLOUD AND BENTLEY 'S' TYPE



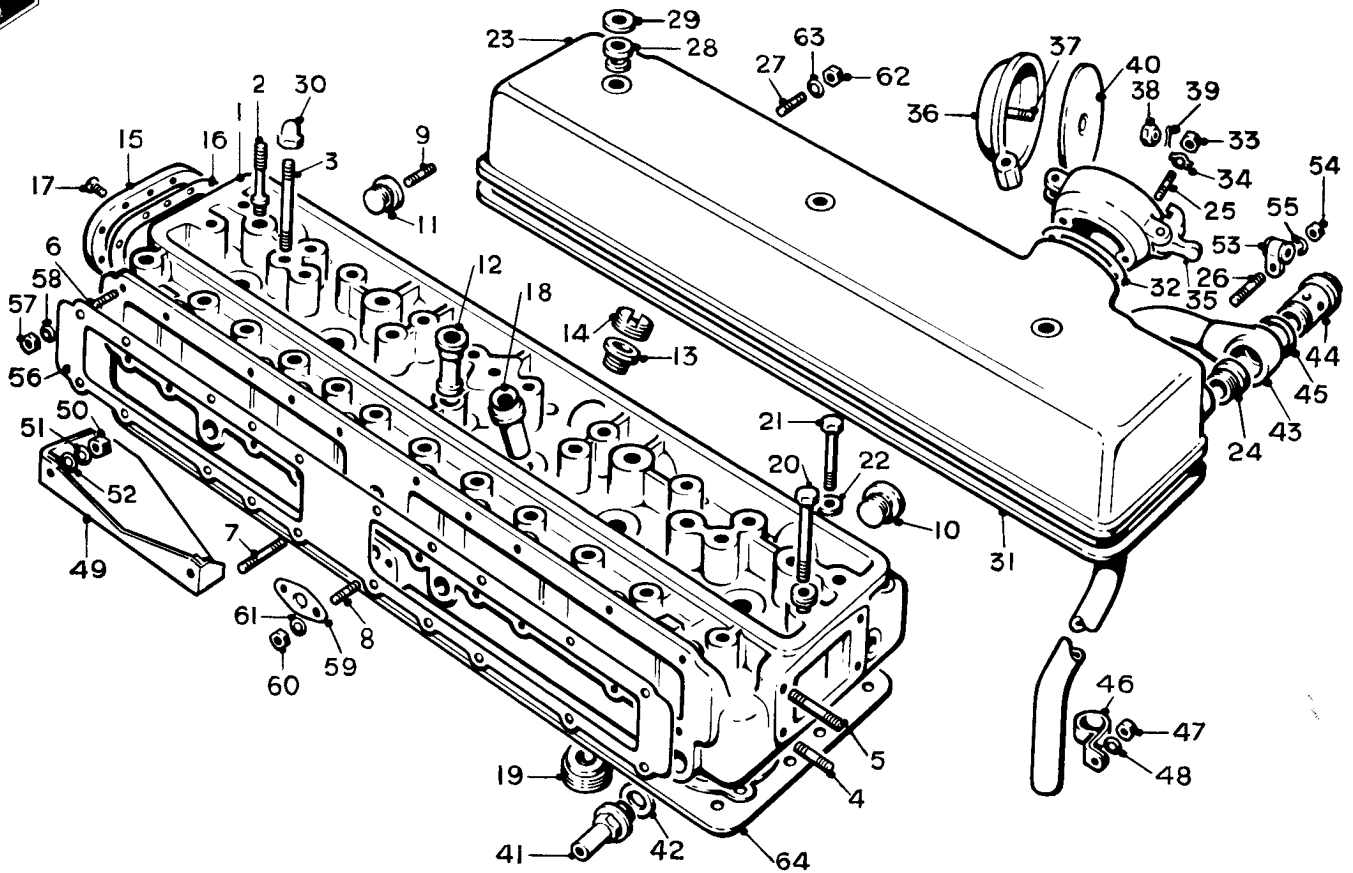
Ref.	Part No.	Description	No off	Ref.	Part No.	Description	No off
	UE.2331	CYLINDER HEAD ASSY.	1	(30)	RE.14062	Dome nut, cover	3
		(6.6 : 1 compression except "Continental")		(31)	UE. 379	Joint, cover	1
(1)	UE.2299	Cylinder head	1	(32)	RE.11319	Joint, adaptor, filler cap	1
(2)	UE.358	Stud, rocker pedestal	5	(33)	UA.301/Z	Nut, adaptor	1
(3)	UA.922/R	Stud, rocker cover	3	(34)	KB.7106	Tab washer, adaptor	1
(4)	UA.905/R	Stud, 1.625", thermostat	2		RE.15934S/A	OIL FILLER ADAPTOR & CAP	
(5)	UA.909/R	Stud, 2.125", thermostat	2	(35)	RE.11318	Adaptor	1
(6)	UA.856/Z	Stud, 1.625", inlet facing	18	(36)	RE.15934	Cap and stud	1
(7)	UA.861/Z	Stud, 2.250", inlet facing	2	(37)	RE.10854	Stud, cap	1
(8)	UA.858/Z	Stud, hotspot	2	(38)	RE.10853	Nut, stud	1
(9)	UA.1603/Z	Stud, core plug	2	(39)	K.4648/Z	Split, pin, nut	1
(10)	RE.9033	Core plug	6	(40)	RE.15879	Washer assembly, cork	1
(11)	RE.10422	Core plug, Nos. 4 & 6	2	(41)	UE.1306	Adaptor, feed, heater and demister	2
	UA.3101/Z	Plug, oil drilling	1	(42)	RE.5007	Washer, adaptor	2
(12)	UE.350	Bush centre	1	(43)	UE.764	BREATHER PIPE ASSEMBLY	
(13)	RE.3682	Adaptor, spark plug	6		UE.766	Connection	1
(14)	RE.3681	Ring, lock, adaptor	6	(44)	UE.767	Bolt, breather connection	1
(15)	EB.4002	Cover, rear end	1	(45)	KB.1092	Washer, bolt	1
(16)	RE.3422	Joint, rear	1	(46)	RE.5467	Clip, breather pipe	1
(17)	K.2813/Z	Screw, cover	10	(47)	UA.351/Z	Nut, clip	1
(18)	RE.361	Guide, inlet valve	6	(48)	K.9008/Z	Washer, clip	1
	RE.14507	Guide, inlet valve, .002" O/S	6	(49)	UE.658	Heat-shield	1
(19)	UE.351	Seating, inlet valve	6	(50)	K.4307/Z	Nut, stud, heat-shield	2
(20)	UE.2166	Setscrew, head, long	29	(51)	K.9006/Z	Washer, spring, nut	2
(21)	UE.2167	Setscrew, head, short	10	(52)	K.4404/Z	Washer, plain, nut	2
(22)	UE.720	Washer, setscrew	39	(53)	RE.14770	Clip, H.T. lead	1
(23)	UE.360	ROCKER COVER ASSEMBLY	1	(54)	K.4006/Z	Nut, clip	1
		(Bentley cars)		(55)	K.9006/Z	Washer, clip	1
	UE.2747	ROCKER COVER ASSEMBLY	1	(56)	UE.2303	Joint, inlet face	1
		(R.R. cars)		(57)	UA.301/Z	Nut, stud, inlet face	20
(24)	UE.363	Insert, breather	1	(58)	K.9008/Z	Washer, nut	20
(25)	UA.853/Z	Stud, oil filter adaptor	2	(59)	RE.15203	Joint, hotspot	1
(26)	UA.1401/Z	Stud, clip	1	(60)	UA.301/Z	Nut, hotspot, face	2
(27)	UA.851/Z	Stud, ignition tube	2	(61)	K.9008/Z	Washer, hotspot face	2
(28)	EB.3998	Bush, cover studs	3	(62)	UA.301/Z	Nut, ignition wire tubes	2
(29)	RE.14060	Backing plate, bush	3	(63)	K.9008/Z	Washer, ignition wire tubes	2
				(64)	UE.5053	Gasket, cylinder head	1

CYLINDER HEAD



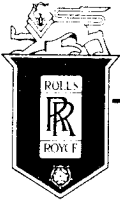
SPARES schedule

SILVER CLOUD AND BENTLEY 'S' TYPE



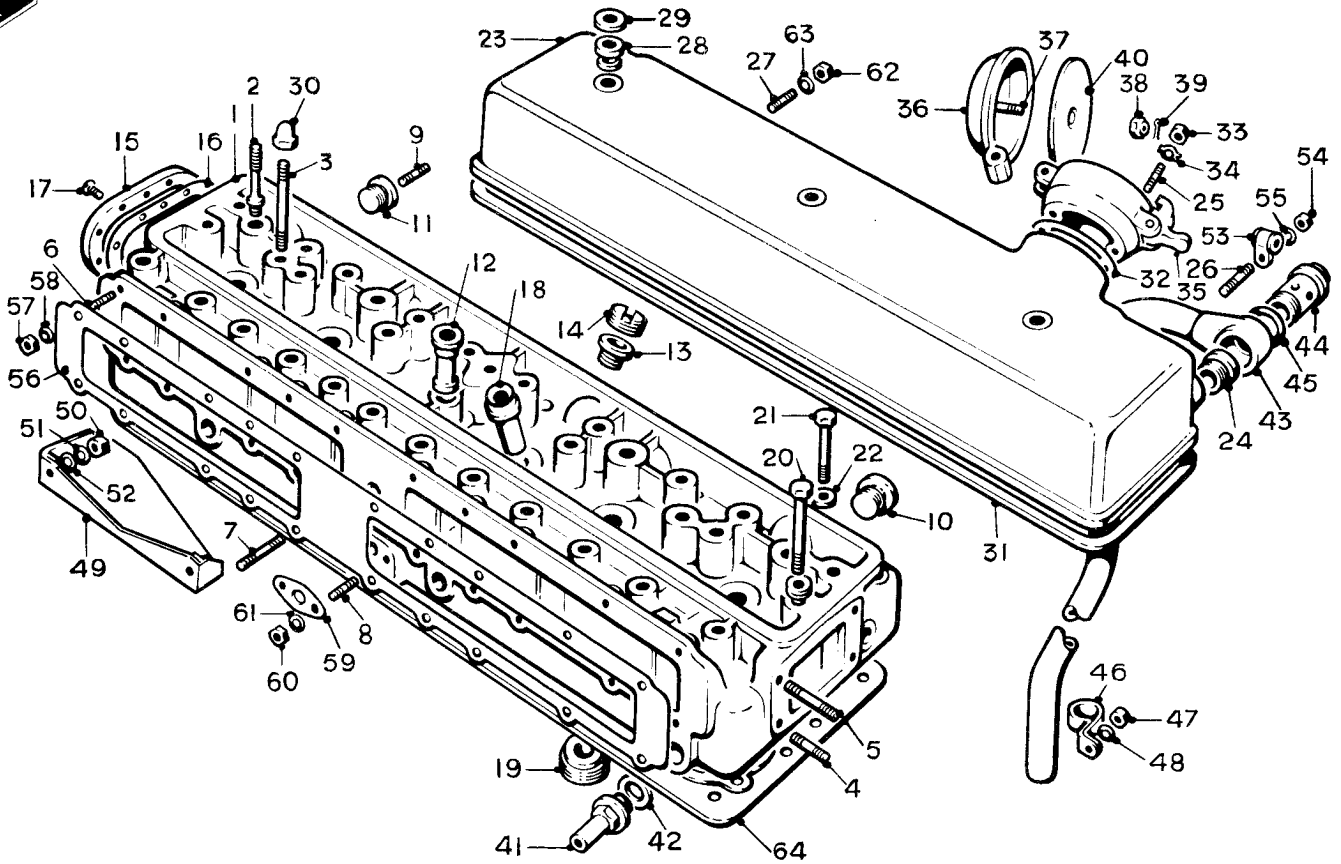
Ref.	Part No.	Description	No off	Ref.	Part No.	Description	No off
	UE.2551	CYLINDER HEAD ASSY.	1	(30)	RE.14062	Dome nut, cover	3
		(7.25 : 1 compression "Continental" only)		(31)	UE.379	Joint, cover	1
(1)	UE.2405	Cylinder head	1	(32)	RE.11319	Joint, adaptor, filler cap	1
(2)	UE.358	Stud, rocker pedestal	5	(33)	UA.301/Z	Nut, adaptor	1
(3)	UA.922/R	Stud, rocker cover	3	(34)	KB.7106	Tab washer, adaptor	1
(4)	UA.905/R	Stud, 1.625", thermostat	2	RE.15934S/A OIL FILLER ADAPTOR & CAP			
(5)	UA.909/R	Stud, 2.125", thermostat	2	(35)	RE.11318	Adaptor	1
(6)	UA.856/Z	Stud, 1.625", inlet facing	18	(36)	RE.15934	Cap and stud	1
(7)	UA.861/Z	Stud, 2.250", inlet facing	2	(37)	RE.10854	Stud, cap	1
(8)	UA.858/Z	Stud, hotspot	2	(38)	RE.10853	Nut, stud	1
(9)	UA.1603/Z	Stud, core plug	2	(39)	K.4648/Z	Split, pin, nut	1
(10)	RE.9033	Core plug	6	(40)	RE.15879	Washer assembly, cork	1
(11)	RE.10422	Core plug, Nos. 4 & 6	2	(41)	UE.1306	Adaptor, feed, heater and demister	2
	UA.3101/Z	Plug, oil drilling	1	(42)	RE.5007	Washer, adaptor	2
(12)	UE.350	Bush centre	1	(43)	UE.764	BREATHER PIPE ASSEMBLY	1
(13)	RE.3682	Adaptor, spark plug	6		UE.766	Connection	1
(14)	RE.3681	Ring, lock, adaptor	6	(44)	UE.767	Bolt, breather connection	1
(15)	EB.4002	Cover, rear end	1	(45)	KB.1092	Washer, bolt	1
(16)	RE.3422	Joint, cover	1	(46)	RE.5467	Clip, breather pipe	1
(17)	K.2813/Z	Screw, cover	10	(47)	UA.351/Z	Nut, clip	1
(18)	RE.361	Guide, inlet valve	6	(48)	K.9008/Z	Washer, clip	1
	RE.14507	Guide, inlet valve, .002" O/S	6	(49)	UE.658	Heat-shield	1
(19)	UE.351	Seating, inlet valve	6	(50)	K.4307/Z	Nut, stud, heat-shield	2
(20)	UE.2166	Setscrew, head, long	29	(51)	K.9006/Z	Washer, spring, nut	2
(21)	UE.2167	Setscrew, head, short	10	(52)	K.4404/Z	Washer, plain, nut	2
(22)	UE.720	Washer, setscrew	39	(53)	RE.14770	Clip, H.T. lead	1
(23)	UE.360	ROCKER COVER ASSEMBLY	1	(54)	K.4006/Z	Nut, clip	1
(24)	UE.363	Insert, breather	1	(55)	K.9006/Z	Washer, clip	1
(25)	UA.853/Z	Stud, oil filter adaptor	2	(56)	UE.2303	Joint, inlet face	1
(26)	UA.1401/Z	Stud, clip	1	(57)	UA.301/Z	Nut, stud, inlet face	20
(27)	UA.851/Z	Stud, ignition tube	2	(58)	K.9008/Z	Washer, nut	20
(28)	EB.3998	Bush, cover studs	3	(59)	RE.15203	Joint, hotspot	1
(29)	RE.14060	Backing plate, bush	3	(60)	UA.301/Z	Nut, hotspot, face	2
				(61)	K.9008/Z	Washer, hotspot face	2
				(62)	UA.301/Z	Nut, ignition wire tubes	2
				(63)	K.9008/Z	Washer, ignition wire tubes	2
				(64)	UE.5053	Gasket, cylinder head	1

CYLINDER HEAD



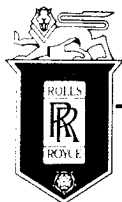
SPARES schedule

SILVER CLOUD AND BENTLEY 'S' TYPE



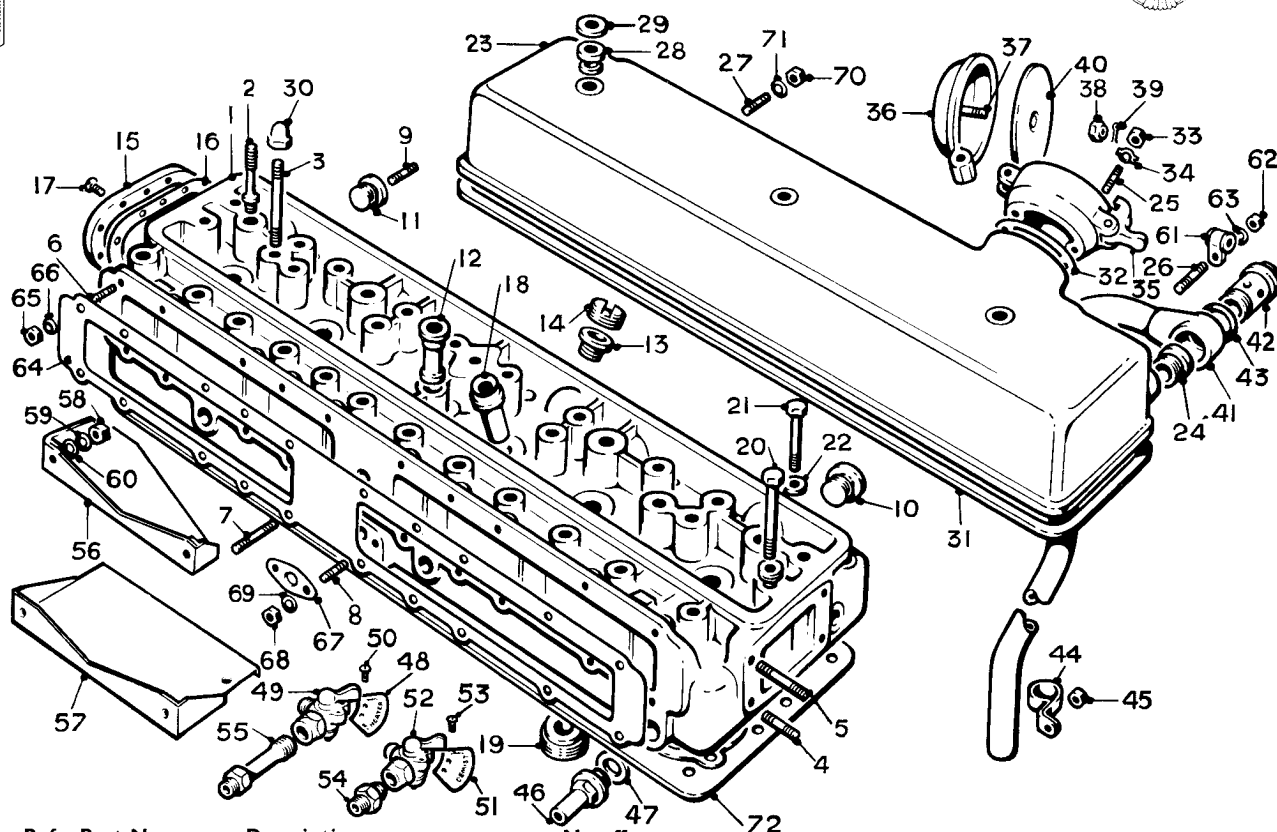
Ref.	Part No.	Description	No off	Ref.	Part No.	Description	No off
	UE.3828	CYLINDER HEAD ASSY. (8.0 : 1 compression)	1	(30)	RE.14062	Dome nut, cover	3
(1)	UE.3764	Cylinder head	1	(31)	UE.379	Joint, cover	1
(2)	UE.358	Stud, rocker pedestal	5	(32)	RE.11319	Joint, adaptor, filler cap	1
(3)	UA.922/R	Stud, rocker cover	3	(33)	UA.301/Z	Nut, adaptor	1
(4)	UA.905/R	Stud, 1.625", thermostat	2	(34)	KB.7106	Tab washer, adaptor	1
(5)	UA.909/R	Stud, 2.125", thermostat	2		RE.15934S/A	OIL FILLER ADAPTOR & CAP	
(6)	UA.856/Z	Stud, 1.625", inlet facing	18	(35)	RE.11318	Adaptor	1
(7)	UA.861/Z	Stud, 2.250", inlet facing	2	(36)	RE.15934	Cap and stud	1
(8)	UA.858/Z	Stud, hotspot	2	(37)	RE.10854	Stud, cap	1
(9)	UA.1603/Z	Stud, core plug	2	(38)	RE.10853	Nut, stud	1
(10)	RE.9033	Core plug	6	(39)	K.4648/Z	Split, pin, nut	1
(11)	RE.10422	Core plug, Nos. 4 & 6	2	(40)	RE.15879	Washer assembly, cork	1
	UA.3101/Z	Plug, oil drilling	1	(41)	UE.1306	Adaptor, feed, heater and demister	2
(12)	UE.350	Bush centre	1	(42)	RE.5007	Washer, adaptor	2
(13)	RE.3682	Adaptor, spark plug	6	(43)	UE.764	BREATHER PIPE ASSEMBLY	
(14)	RE.3681	Ring, lock, adaptor	6		UE.766	Connection	1
(15)	EB.4002	Cover, rear end	1	(44)	UE.767	Bolt, breather connection	1
(16)	RE.3422	Joint, cover	1	(45)	KB.1092	Washer, bolt	1
(17)	K.2813/Z	Screw, cover	10	(46)	RE.5467	Clip, breather pipe	1
(18)	RE.361	Guide, inlet valve	6	(47)	UA.351/Z	Nut, clip	1
	RE.14507	Guide, inlet valve, .002" O/S	6	(48)	K.9008/Z	Washer, clip	1
(19)	UE.3807	Seating, inlet valve	6	(49)	UE.658	Heat-shield	1
(20)	UE.2166	Setscrew, head, long	29	(50)	K.4307/Z	Nut, stud, heat-shield	2
(21)	UE.2167	Setscrew, head, short	10	(51)	K.9006/Z	Washer, spring, nut	2
(22)	UE.4328	Washer, setscrew	39	(52)	K.4404/Z	Washer, plain, nut	2
(23)	UE.360	ROCKER COVER ASSEMBLY	1	(53)	RE.14770	Clip, H.T. lead	1
		(Bentley cars)		(54)	K.4006/Z	Nut, clip	1
	UE.2747	ROCKER COVER ASSEMBLY	1	(55)	K.9006/Z	Washer, clip	1
		(R.R. cars)		(56)	UE.2303	Joint, inlet face	1
(24)	UE.363	Insert, breather	1	(57)	UA.301/Z	Nut, stud, inlet face	20
(25)	UA.853/Z	Stud, oil filter adaptor	1	(58)	K.9008/Z	Washer, nut	20
(26)	UA.1401/Z	Stud, clip	2	(59)	RE.15203	Joint, hotspot	1
(27)	UA.851/Z	Stud, ignition tube	2	(60)	UA.301/Z	Nut, hotspot, face	2
(28)	EB.3998	Bush, cover studs	3	(61)	K.9008/Z	Washer, hotspot face	2
(29)	RE.14060	Backing plate, bush	3	(62)	UA.301/Z	Nut, ignition wire tubes	2
				(63)	K.9008/Z	Washer, ignition wire tubes	2
				(64)	UE.5053	Gasket, cylinder head	1

CYLINDER HEAD



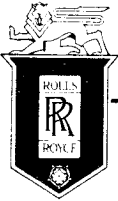
SPARES schedule

SILVER CLOUD AND BENTLEY 'S' TYPE



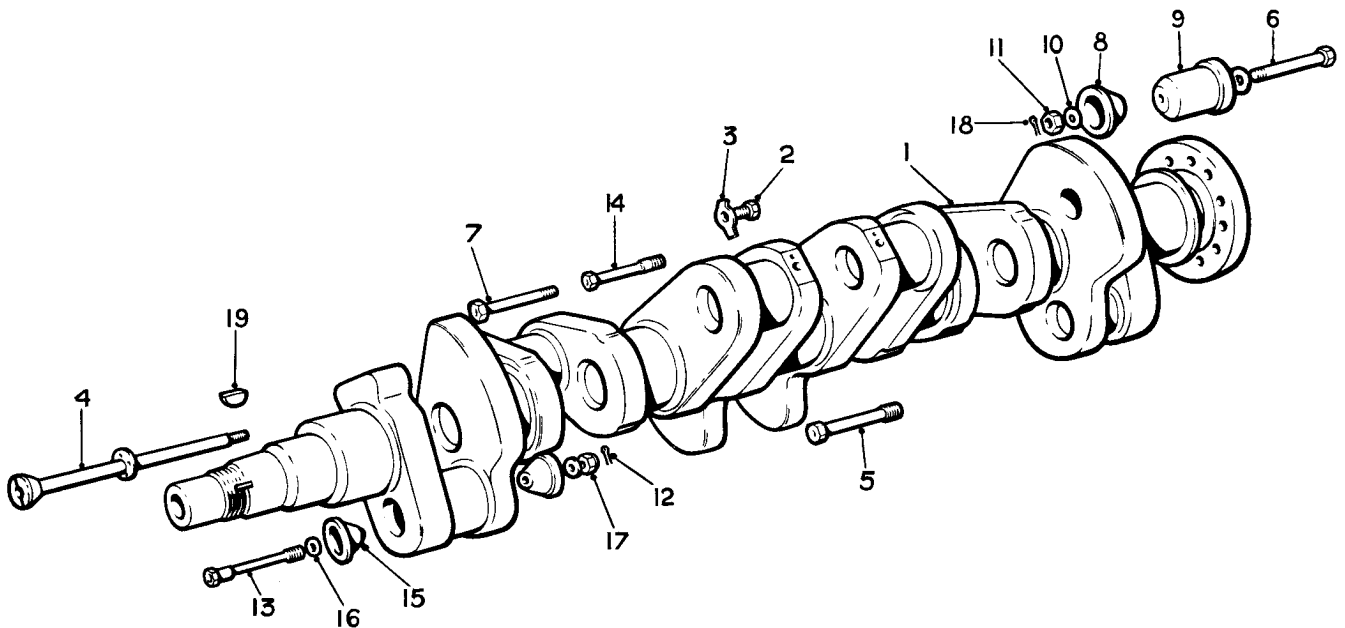
Ref.	Part No.	Description	No off	Ref.	Part No.	Description	No off
		CYLINDER HEAD ASSY. (8:0:1 Compression)	1			OIL FILLER ADAPTOR & CAP	1
(1)	UE.3345	Cylinder head	1	(35)	RE.15934/A	Adaptor	1
(2)	UE.358	Stud, rocker pedestal	5	(36)	RE.15934	Cap and stud	1
(3)	UA.922/R	Stud, rocker cover	3	(37)	RE.10854	Stud, cap	1
(4)	UA.905/R	Stud, 1.625", thermostat	2	(38)	RE.10853	Nut, stud	1
(5)	UA.909/R	Stud, 2.125", thermostat	2	(39)	K.4648/Z	Split, pin, nut	1
(6)	UA.856/Z	Stud, 1.625", inlet facing	18	(40)	RE.15879	Washer assembly, cork	1
(7)	UA.861/Z	Stud, 2.250", inlet facing	2	(41)	UE.764	BREATHER PIPE ASSEMBLY	1
(8)	UA.858/Z	Stud, hotspot	2		UE.766	Connection	1
(9)	UA.1603/Z	Stud, core plug	2	(42)	UE.767	Bolt, connection	1
(10)	RE.9033	Core plug	6	(43)	KB.1092	Washer, bolt	1
(11)	RE.10422	Core plug, Nos. 4 & 6	2	(44)	RE.5467	Clip, pipe	1
	UA.3101/Z	Plug, oil drilling	1	(45)	UA.351/Z	Nut, clip	1
(12)	UE.350	Bush centre	1	(46)	UE.1306	Adaptor, pipes, heater and demist.	2
(13)	RE.3682	Adaptor, spark plug	6	(47)	RE.5007	Washer, adaptor	2
(14)	RE.3681	Ring, lock, adaptor	6		UD.3984	WATER TAP, HEATER ASSY.	1
(15)	EB.4002	Cover, rear end	1	(48)	UD.3982	Plate, indicator	1
(16)	RE.3422	Joint, cover	1	(49)	UD.3976	Tap	1
(17)	K.2813/Z	Screw, cover	10	(50)	K.1708/Z	Screw	1
(18)	RE.361	Guide, inlet valve	6		UD.3985	WATER TAP, DEMIST, ASSY.	1
	RE.14507	Guide, inlet valve, .002" O/S	6	(51)	UD.3983	Plate, indicator	1
(19)	UE.3807	Seating, inlet valve	6	(52)	UD.3977	Tap	1
(20)	UE.2166	Setscrew, head, long	29	(53)	K.1708/Z	Screw	1
(21)	UE.2167	Setscrew, head, short	10	(54)	KB.5131/Z	Union, tap	2
(22)	UE.720	Washer, setscrew	39	(55)	UE.3439	Extension, heater, tap	1
(23)	UE.360	ROCKER COVER ASSEMBLY	1				
		(Bentley cars)	1				
	UE.2747	ROCKER COVER ASSEMBLY	1				
		(R.R. cars)	1	(56)	UE.3339	Heat shield, pipes	1
(24)	UE.363	Insert, breather	1	(57)	UE.3451	Heat shield, pipes	1
(25)	UA.853/Z	Stud, oil filter adaptor	2	(58)	K.4307/Z	Nut, heat shield	2
(26)	UA.1401/Z	Stud, clip	1	(59)	K.9006/Z	Washer, spring, nut	2
(27)	UA.851/Z	Stud, ignition tube	2	(60)	K.4404/Z	Washer, plain, nut	2
(28)	EB.3998	Bush, cover studs	3	(61)	RE.14770	Clip, H.T. lead	1
(29)	RE.14060	Backing plate, bush	3	(62)	K.4006/Z	Nut, clip	1
(30)	RE.14062	Dome nut, cover	3	(63)	K.9006/Z	Washer, nut	1
(31)	UE.379	Joint, cover	1	(64)	UE.2303	Joint, cover, inlet face	1
(32)	RE.11319	Joint, adaptor, filler cap	1	(65)	UA.301/Z	Nut, cover	20
(33)	UA.301/Z	Nut, adaptor	1	(66)	K.9008/Z	Washer, nut	20
(34)	KB.7106	Tab washer, adaptor	1	(67)	RE.15203	Joint, hotspot face	1
				(68)	UA.301/Z	Nut, hotspot	2
				(69)	K.9008/Z	Washer, nut	2
				(70)	UA.301/Z	Nut, ignition wire tube	2
				(71)	K.9008/Z	Washer, nut	2
				(72)	UE.5053	Gasket, cylinder head	1

CYLINDER HEAD
(WITH DEMISTER AND HEATER TAPS)



SPARES schedule

SILVER CLOUD AND BENTLEY 'S' TYPE

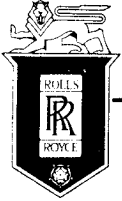


Ref.	Part No.	Description	No off
(1)	UE.305	Crankshaft	1
(2)	UA.101/Z	Blanking plug	6
(3)	KB.7106	Tab, washer, plug	6
(4)	UE.308	Stud, oil cap, front journal	1
(5)	RE.19004	Stud, oil cap, centre journal	1
(6)	UE.415	Stud, oil cap, rear journal	1
(7)	RE.19002	Stud, oil cap, inter. journal	4
(8)	RE.14142	Cap, oils, journals	12
(9)	RE.13449	Cap, oil, rear journal	1
(10)	KB.1076	Washer, caps	13
(11)	UA.1101/Z	Nut, studs	7
(12)	K.4602/Z	Split, pin, studs	7
(13)	RE.11629	Stud, oil cap, 1 & 6 pins	2
(14)	RE.9443	Stud, oil cap, 2, 3, 4 & 5 pins	4
(15)	RE.14143	Cap, oil, crankpin	12
(16)	RE.6976	Washer, cap	17
(17)	K.4206/Z	Nut, studs	6
(18)	K.4602/Z	Split, pin studs	6
(19)	KC.505	Woodruff Key, .125"	3
	KC.506	Woodruff Key, .1255"	3
	KC.507	Woodruff Key, .126"	3
	KC.508	Woodruff Key, .1265"	3

Alt.

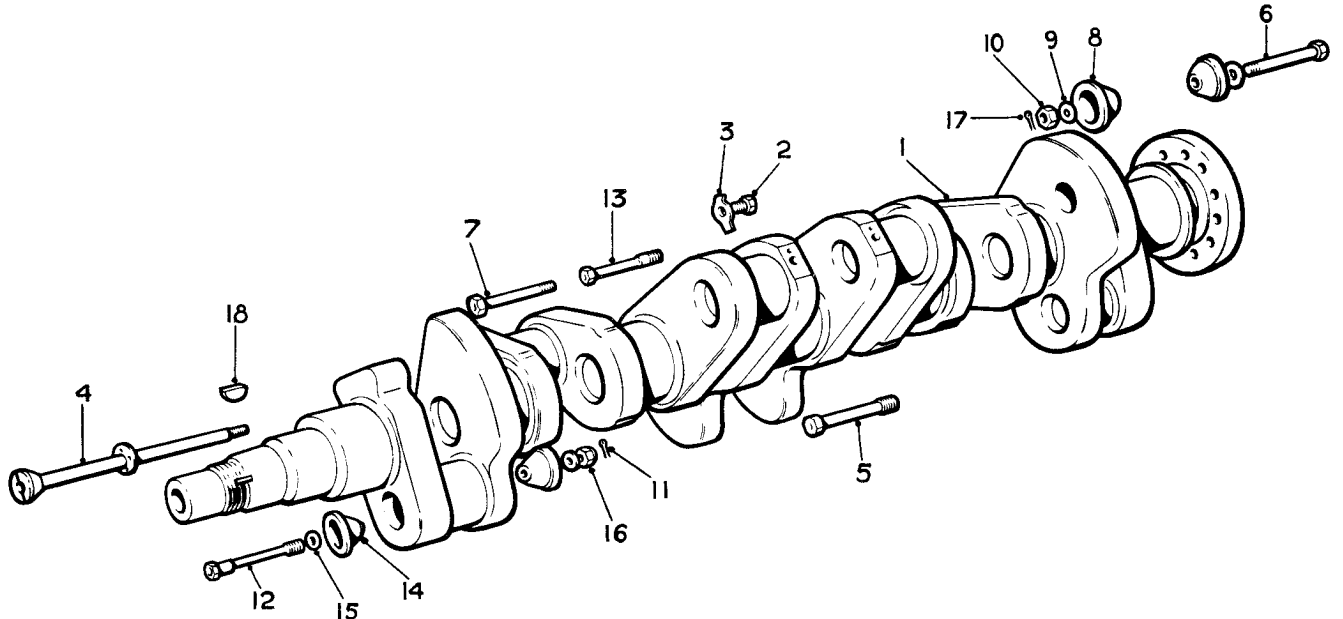
CRANKSHAFT

(Part Assembly RH.278
For Automatic Gearbox cars only)



SPARES schedule

SILVER CLOUD AND BENTLEY 'S' TYPE

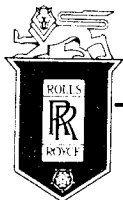


Ref.	Part No.	Description	No off
(1)	UE.305	Crankshaft	1
(2)	UA.101/Z	Blanking plug	6
(3)	KB.7106	Tab washer	6
(4)	UE.308	Stud, oil cap, front journal	1
(5)	RE.19004	Stud, oil cap, centre journal	1
(6)	RE.19003	Stud, oil cap, rear journal	1
(7)	RE.19002	Stud, oil cap, inter journals	4
(8)	RE.14142	Cap, oil, journals	13
(9)	KB.1076	Washer, caps	13
(10)	UA.1101/Z	Nut, studs	7
(11)	K.4602/Z	Split, pin studs	7
(12)	RE.11629	Stud, oil cap, 1 & 6 pins	2
(13)	RE.9443	Stud, oil cap, 2, 3, 4 & 5 pins	4
(14)	RE.14143	Cap, oil, crankpin	12
(15)	RE.6976	Washer, cap	17
(16)	K.4206/Z	Nut, studs	6
(17)	K.4602/Z	Split pin	6
(18)	KC.505	Woodruff Key, .125"	3
	KC.506	Woodruff Key, .1255"	3
	KC.507	Woodruff Key, .126"	3
	KC.508	Woodruff Key, .1265"	3

} Alt.

CRANKSHAFT

(Part Assembly RH.279
For Synchromesh Gearbox cars only)

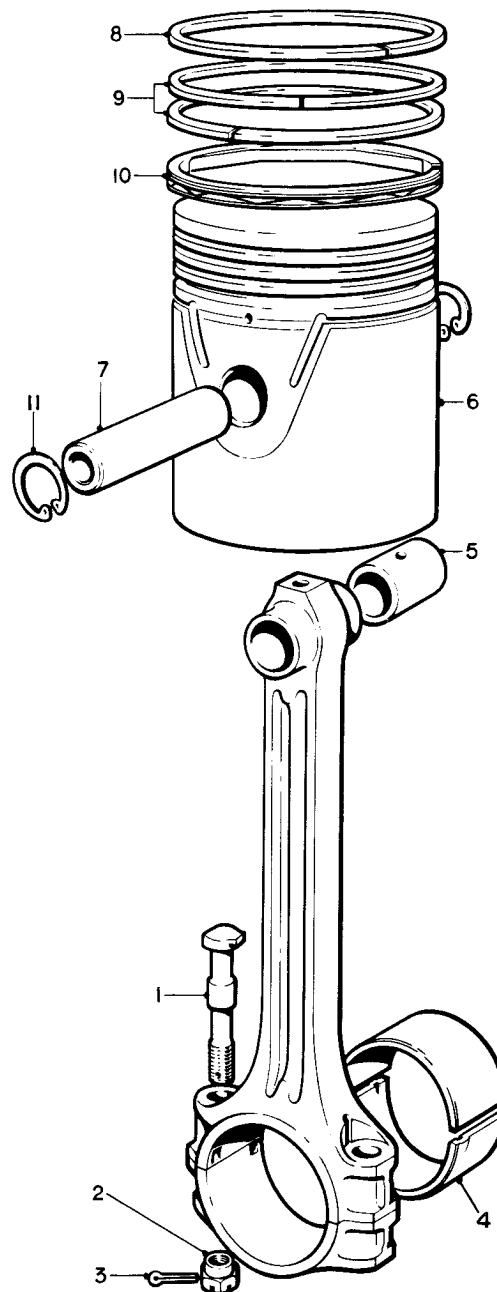


SPARES schedule

SILVER CLOUD AND BENTLEY 'S' TYPE



Part No.	Description	No off
RE.22447	CONNECTING ROD ASSEMBLY	6
(1) RE.13414	Bolt, standard	2
RE.17708	Bolt, .002 in. O/S	2
RE.17705	Bolt, .004 in. O/S	2
(2) RE.14185	Nut	2
(3) E.84689	Split, pin, bolt	12
(4) RE.3236	Bush, large end, standard	6
RE.15121	Bush, large end, .020 in. U/S	6
RE.19999	Bush, large end, .030 in. U/S	6
(5) EB.5211	Bush, small end	6
UE.2965	PISTON ASSEMBLY, STANDARD	6
(6) UE.2955	Piston	1
(7) UE.2975	Gudgeon pin	1
(8) RE.20500	Compression ring	1
(9) RE.20510	Centre ring	2
(10) RE.20692	Scraper ring	1
(11) KB.14013/L	Circlip, gudgeon pin	2
UE.2697	PISTON ASSEMBLY, .010 in. O/S	6
	as standard except :-	
UE.2957	Piston	1
RE.20502	Compression ring	1
RE.20512	Centre ring	2
UE.2968	PISTON ASSEMBLY, .015 in. O/S	6
	as standard except :-	
UE.2958	Piston	1
RE.20503	Compression ring	1
RE.20513	Centre ring	2
UE.2970	PISTON ASSEMBLY, .025 in. O/S	6
	as standard except :-	
UE.2960	Piston	1
RE.20505	Compression ring	1
RE.20515	Centre ring	2
RE.20696	Scraper ring	1
UE.2972	PISTON ASSEMBLY, .035 in. O/S	6
	as standard except :-	
UE.2962	Piston	1
RE.20507	Compression ring	1
RE.20517	Centre ring	2
RE.20696	Scraper ring	1



CONNECTING RODS AND PISTONS