

# FIELD SERVICE BULLETIN



Date: April 7, 2004  
 File Group: 03 Section: Rear Suspension  
 ATTENTION: Service Manager

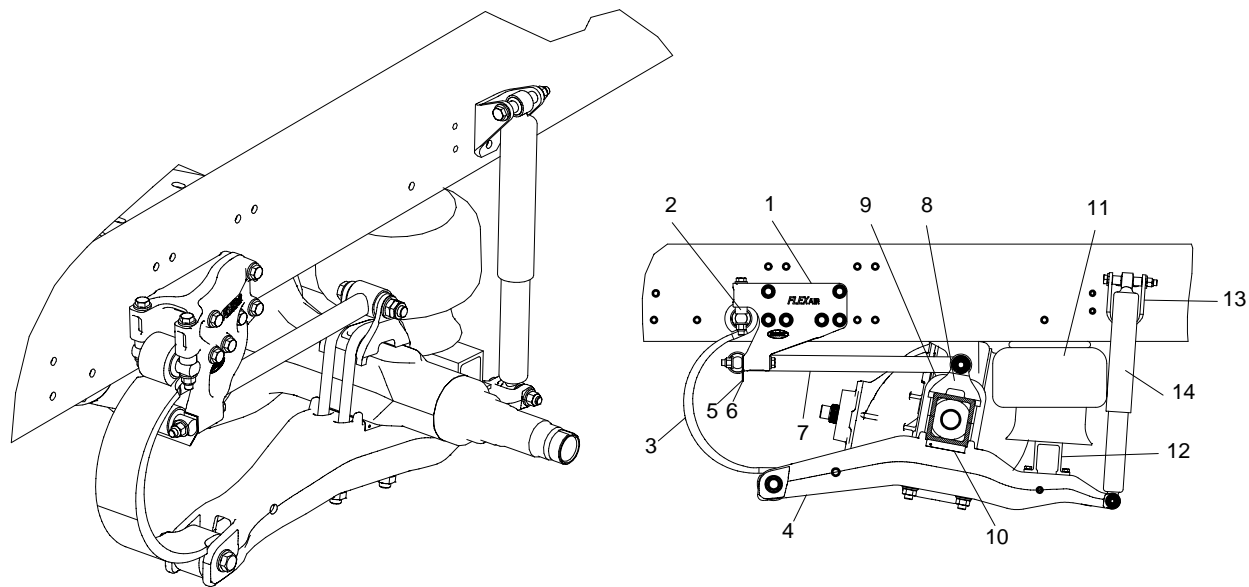
Distribution Copy:  
 ✓ Dealer Principal  
 ✓ Warranty Manager  
 ✓ Parts Manager  
 ✓ Sales Manager

## FLEX Air™ Rear Suspension

This bulletin is applicable to all vehicles equipped with *FLEX Air™* proprietary rear suspensions. It provides information in the following areas:

- [Inspection & Maintenance](#)
- [Adjusting Ride Height and Pinion Angle](#)
- [Adjusting Lateral Alignment \(Tracking\)](#)
- [Balancing Springs](#)

The *FLEX Air* suspension comprises a stiff, lightweight aluminum drive beam with a semi-elliptic, taper leaf spring mounted at one end and an air spring at the other. Rated at 38,000 lb., it is designed for on-highway applications that require low weight combined with low ride height (see Figure 1).



1	Drive Bracket	8	Radius Rod Bracket
2	Link Spring Spacer	9	U-Bolt
3	Link Spring Assembly	10	Transition Shim
4	Drive Beam Assembly	11	Air Spring Assembly
5	Alignment Shim (0.75 mm)	12	Air Spring Support Beam
6	Alignment Shim (1.5 mm)	13	Shock Absorber Bracket
7	Radius Rod Assembly	14	Shock Absorber

**Figure 1** Illustration of *FLEX Air* Suspension