

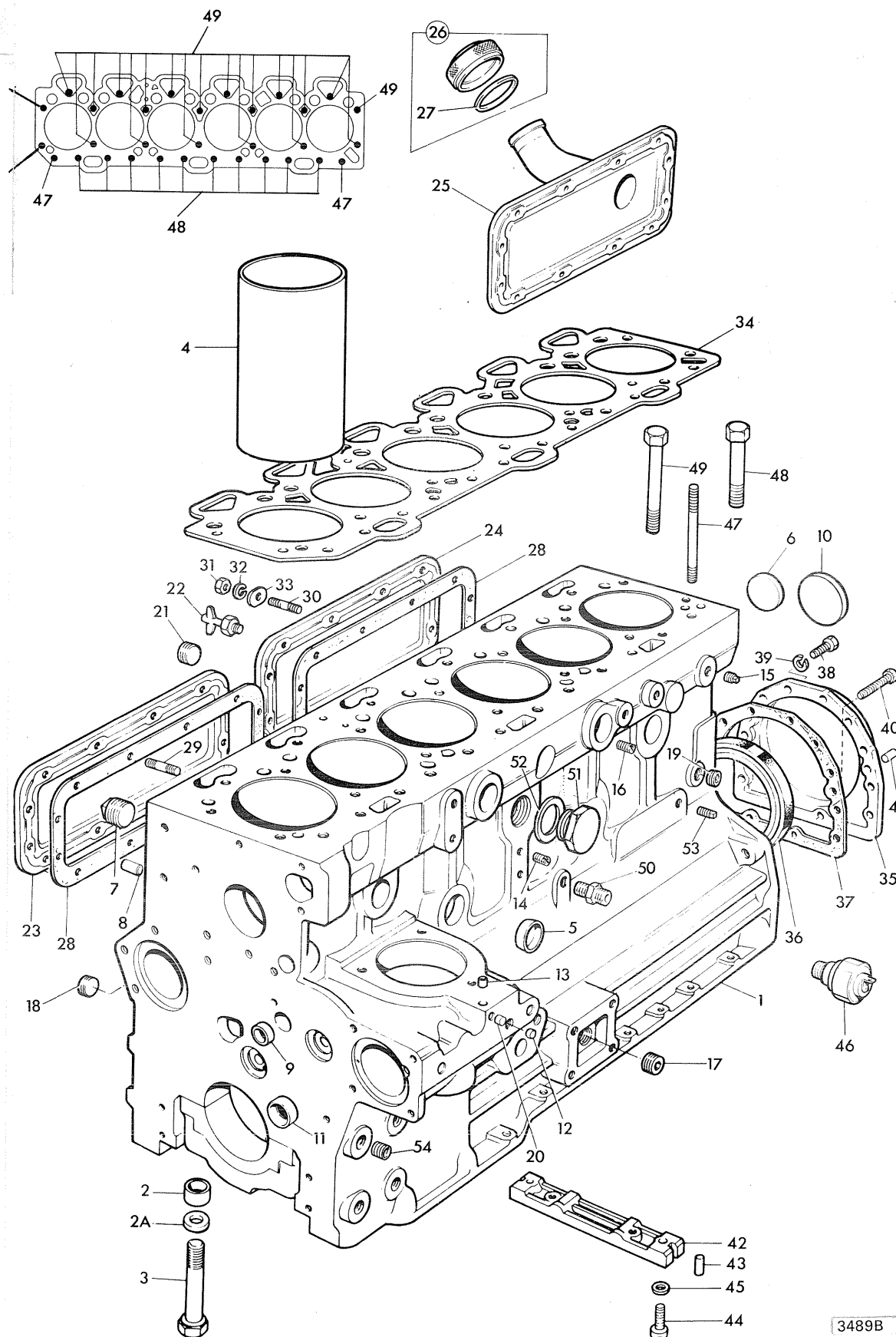


1 1-4 CYLINDER BLOCK

3489B

2162M ISSUE

5*
-4



ITEM	PART No.	CHANGE No.	DESCRIPTION	QUANTITY OFF BUILD		
				S	X	Y
1	94967 61954	354U356086TL	Cylinder Block Assy.	1		
	94967 61954 61136	354U352748TL			1	
2	33142111	:Thimble	14	14	14
2A	0760001	Shimwasher	14	14	14
3	32181434	:Bolt	14	14	14
4	31358341	:Liner-Slip Fit	6	6	6
5	0650563	:Plug	7	7	7
6	0650577	:Plug	1	1	1
7	0650588	:Plug	3	3	3
8	32417133	:Plug	1	1	1
9	0650566	:Plug	2	2	2
10	32416105	Plug	1	1	1
11	32417115	Plug	1	1	1
12	32417127	Plug	3	3	3
13	32417134	Plug	2	2	2
14	32114116	Plug	2	2	2
15	2431132	Plug	1	1	1
16	32114116	Plug	1	1	1
17	32417117	Plug	1	1	1
18	0650586	* Plug	1	1	1
19	32161114	Plug	1	1	1
20	32417134	Plug	1	1	1
21	0650586	Plug	1	1	1
22	31422	Drain Tap	1		
	31419			1	1
23	37554564	Tappet Cover-Turbo Drain	1		
	37554114			1	1
24	37554114	Tappet Cover			1
	37554549	Tappet Cover-Turbo Drain			1
25	37554552	Tappet Cover	1		
26	2487841	*Filler Cap	1		
27	24870001	:Seal	1		
28	36846408	Gasket	2	2	2

3489B

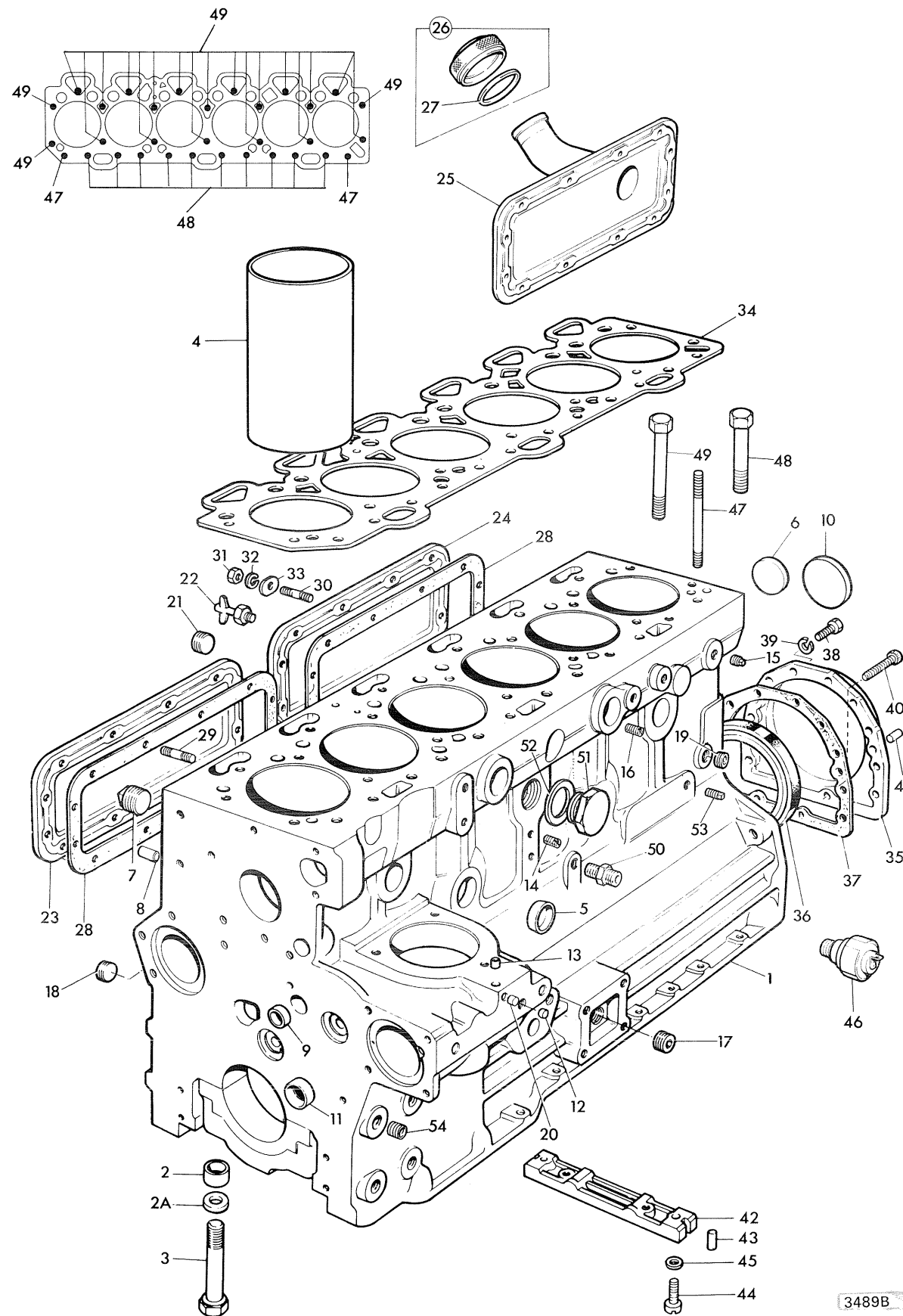


1 1-4 CYLINDER BLOCK

3489B

2162M ISSUE

5



ITEM	PART No.	CHANGE No.	DESCRIPTION	QUANTITY OFF BUILD		
				S	X	Y
29	0826220	Stud	8	8	10
	0826211			4	4	
	0826280					2
30	0826220	Stud	11	11	11
	0826243			1		
	0826241				1	1
31	0576002	Nut	24	24	24
32	0920053	Spring Washer	24	24	24
33	36151505	Washer	24	24	24
34	36812546	Superseded	Gasket	1	1	
	36812548†			1	1	
	36812547					1
35	37513851	Housing	1	1	1
36	2415391	Seal	1	1	1
37	36817157	Gasket	1	1	1
38	0746211	Bolt	10	10	10
39	0920003	Spring Washer	10	10	10
40	2172530	Capscrew	2	2	2
41	0350009	Dowel	2	2	2
42	36277831	Bridge Piece	2	2	2
43	32811408	Seal	4	4	4
44	2176369	Screw	4	4	4
45	0920521	Washer	4	4	4
46	2848062	Superseded	Oil Pressure Switch	1	1	1
	256/80701					
47	3526312	Stud	2	2	2
48	32181424	Bolt	10	10	10
49	32181425	Bolt	20	20	20
50	816/00465	Adapter	N/R	N/R	N/R
51	32161323	Plug-Water Heater Tapping	N/R	N/R	1
52	2411170	Washer	N/R	N/R	1
53	0650594	Plug	1	1	1
54	2138625	Adapter 5/8in.UNC to 7/16in. UNF	A/R	A/R	A/R

3489B

† SEE TI K46/H
K45/E

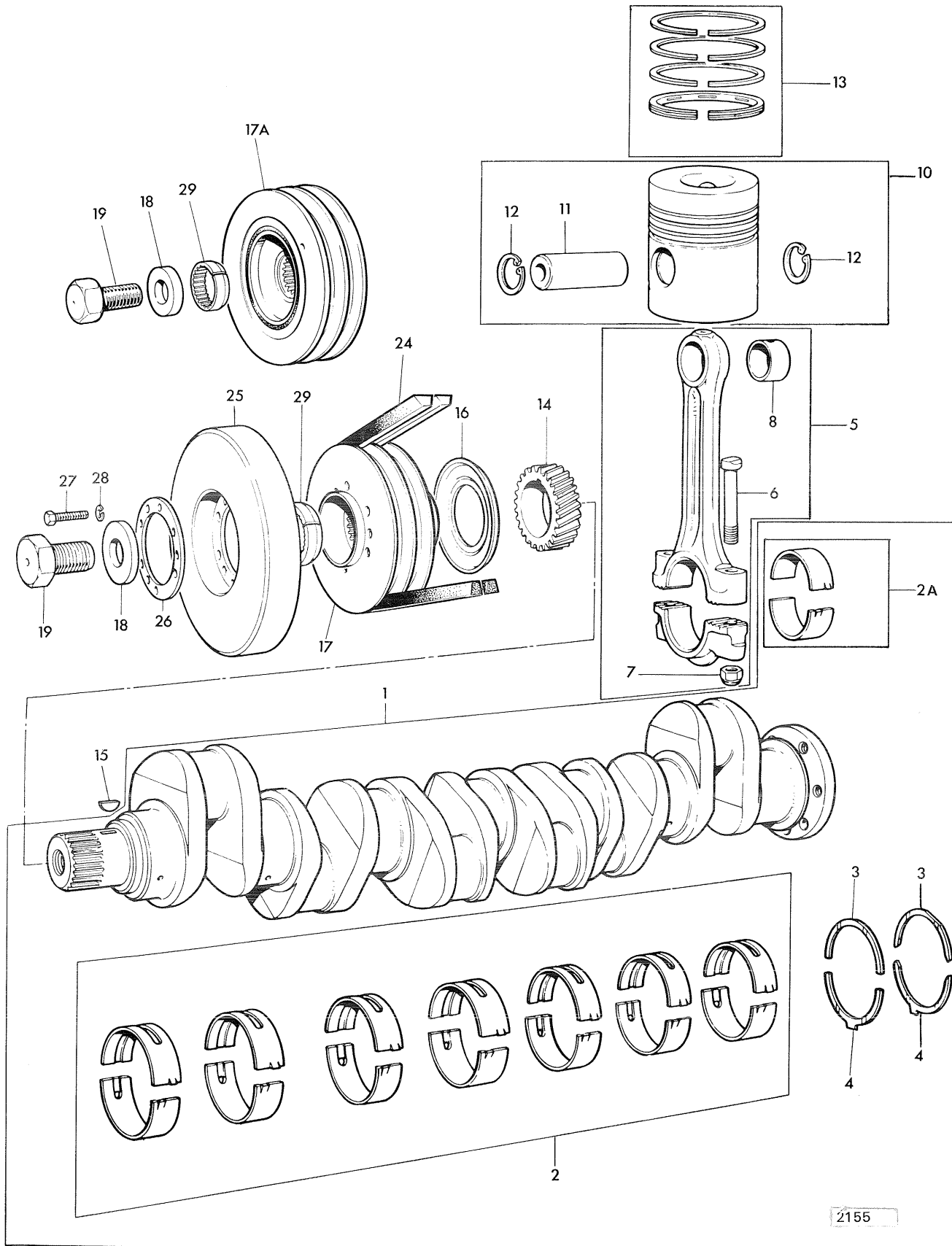


1 2-1 CRANKSHAFT

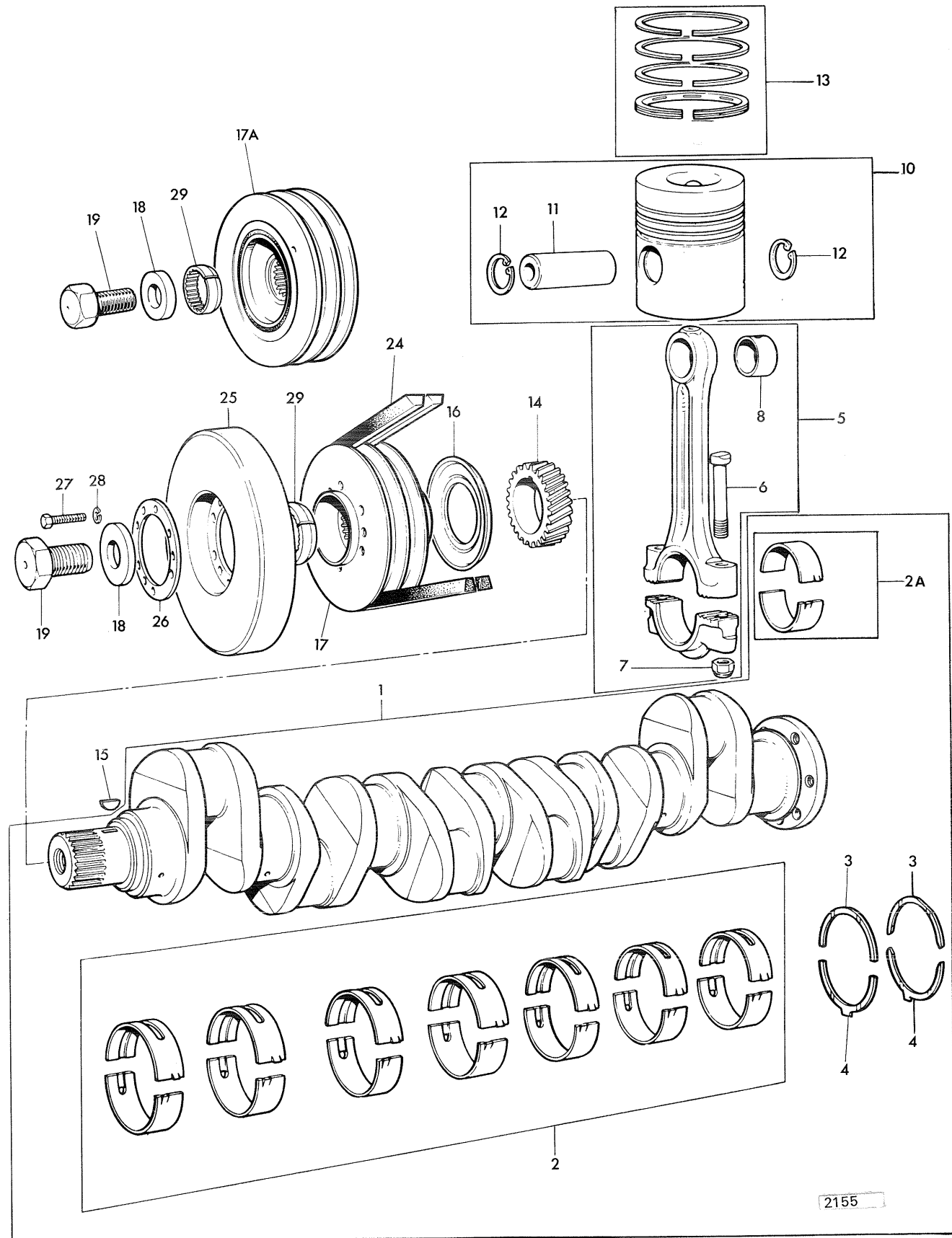
2155

2162M ISSUE

4*
3



ITEM	PART No.	CHANGE No.	DESCRIPTION	QUANTITY OFF BUILD				
				D	R	S	X	Y
1	85729	Superseded	Crankshaft & Bearings	1				
	89144	Superseded		1	1	1		
	92491	Superseded		1	1	1		
	92492	354U327089TL		1	1	1	1	
	94451#	Superseded				1	1	1
	68064# 68062#				1	1	1	1
2	85010	*:Main Bearing Set STD	1	1	1		
	89066#	s/s				1	1	1
	67078 85010A	* Main Bearing Set.010in. U/S	1	1	1		
	89066A#	s/s				1	1	1
	67078A 85010B	*Main Bearing Set.020in. U/S	1	1	1		
	89066B#	Main Bearing Set.020in. U/S			1	1	1
85010C	Main Bearing Set.020in. U/S	1	1	1		
	89066C#	* Main Bearing Set.020in. U/S			1	1	1
	67078C						
	85040	Superseded	:Big End Bearing Set STD	1	1	1		
	89065#	:Big End Bearing STD			1	1	1
	85040A	Superseded	Big End Bearing Set .010in.U/S	1	1	1		
89065A#	Big End Bearing Set .010in.U/S			1	1	1
	85040B	Superseded	Big End Bearing Set .020in.U/S	1	1	1		
	89065B#	Big End Bearing Set .020in.U/S			1	1	1
	85040C	Superseded	Big End Bearing Set .030in.U/S	1	1	1		
	89065C#	Big End Bearing Set .030in.U/S			1	1	1
	3	31137311	:Thrust Washer-STD	2	2	2	2
31137312		:Thrust Washer-.007in. O/S	2	2	2	2	2
4	31137321	:Thrust Washer Bottom STD	2	2	2	2	2
	31137322	:Thrust Washer.007in. O/S	2	2	2	2	2
5	85209	s/s	* Connecting Rod Assy.	6	6	6	6	6
6	32762116	:Bolt	12	12	12	12	12
7	33221321	:Nut	12	12	12	12	12
8	31134134	:Bush	6	6	6	6	6
10	86726	Piston Assembly	6	6	6	6	6



ITEM	PART No.	CHANGE No.	DESCRIPTION	QUANTITY OFF BUILD				
				D	R	S	X	Y
11	N.S.P.	:Grudgeon Pin	6	6	6	6	6
12	2721133	:Circlip	12	12	12	12	12
13	85732 86773 69812## 41158031	Superseded S/S S/S	* Piston Ring Kit STD	6	6	6	6	6
14	31171211	Service Ring Pack ✓	A/R	A/R	A/R	A/R	A/R ✓
15	0500012	Gear	1	1	1	1	1
16	33415311	Key	1	1	1	1	1
17	31152542	Flange	1	1	1	1	1
17A	2635712 2635720	Pulley	1				
			Pulley/Damper		1	1	1	1
18	33125124	Washer	1	1	1	1	1
19	32162319	Bolt	1	1	1	1	1
24	0070178 2612466 815/00019 2612465 990/47900 Superseded Superseded	V Belt	2				
					1	1	1	
					2	2	2	
								1
								1
25	2635741	Vibration Damper	1				
26	33153512	Distance Piece	1				
27	0746211	Bolt	9				
28	0920053	Spring Washer	9				
29	33177514 33177561 33171116	Superseded Superseded	Locking Ring	1	1	1	1	1

#For Engine Nos. with L Suffix only

See T.1.K52/H,K51/E

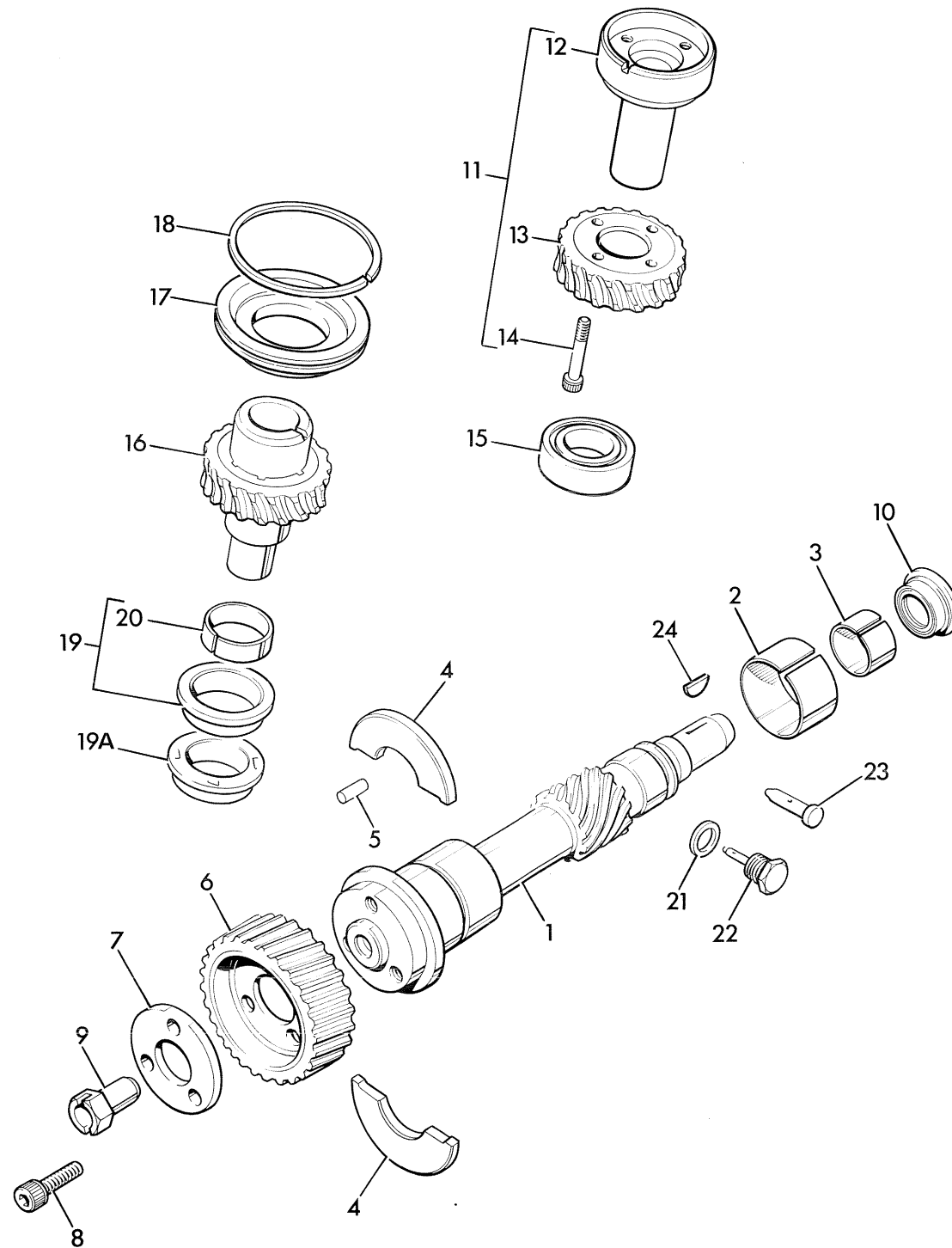


1 5-1 AUXILIARY DRIVE

2077B

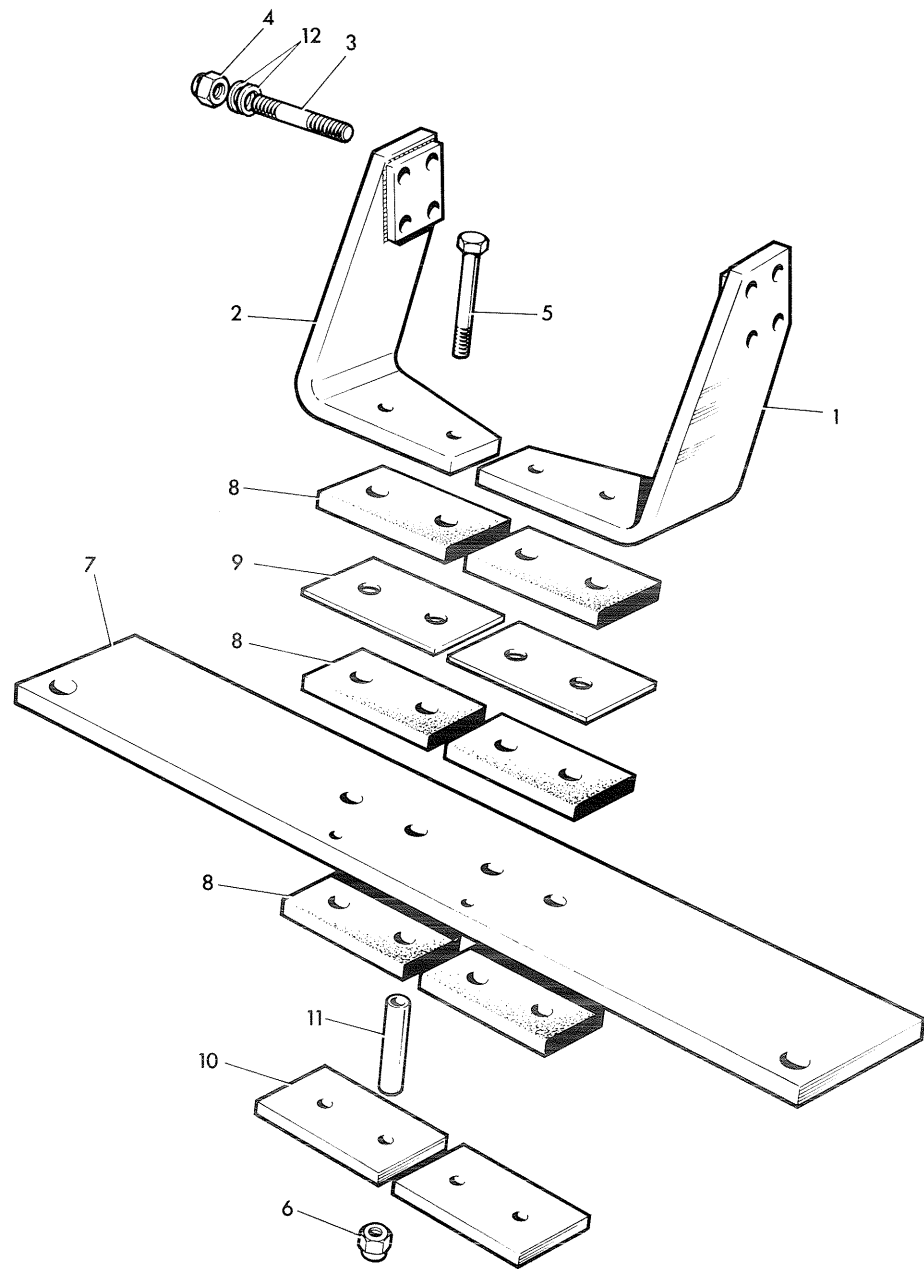
2162M ISSUE

4



ITEM	PART No.	CHANGE No.	DESCRIPTION	QUANTITY OFF BUILD				
				D	R	S	X	Y
1	31173409 31173422	N/A Use with 2415335	#Drive Shaft Seal	1	1	1	1	1
2	31134129	Bush	1	1	1	1	1
3	2511447	Bush	1	1	1	1	1
4	36178519 31137481	Superseded	Thrust Plate	2	2	2	2	2
5	2116024	Dowel	1	1	1	1	1
6	31171731	Gear	1	1	1	1	1
7	33153134	Plate	1	1	1	N/R	N/R
8	2172688	Capscrew	3	3	3	3	3
9	33571115	Plug	1	1	1	1	1
10	2415503 2415335	E354U381264TL	#Seal	1	1	1	1	1
Items 11 to 15 inclusive N/R on these applic's.								
16	41115321	Superseded	*Gear Shaft	1				
	41115325	354U116869	S/S	1				
	41115342	354U38058TL		1	1	1	1	1
	41115367					1	1	1
17	33411571 33411572	Superseded	Collar	1	1	1		
18	0640011	Seal	1	1	1	1	1
19	41425732 41425632	Collar Assembly	1	1	1		
19A	33422139 41425608	Superseded	#Collar	1	1	1	1	1
20	2511636	To 354U380157TL	:Bush	1	1	1	1	1
Deleted								
Items 21 and 22 N/R on these applications								
23	33435133	Spray Tube	1	1	1	1	1
24	0500009	#Key	1	N/R	1	N/R	N/R

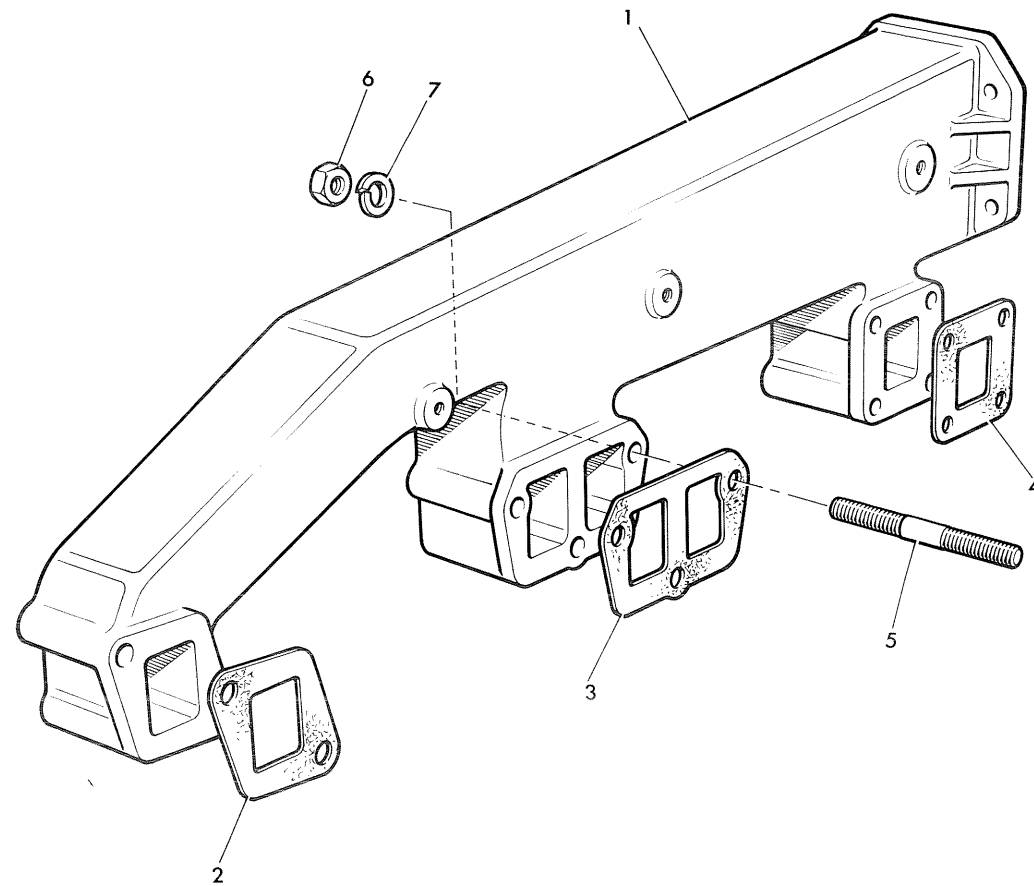
#See T.1. K68/H, K66/E

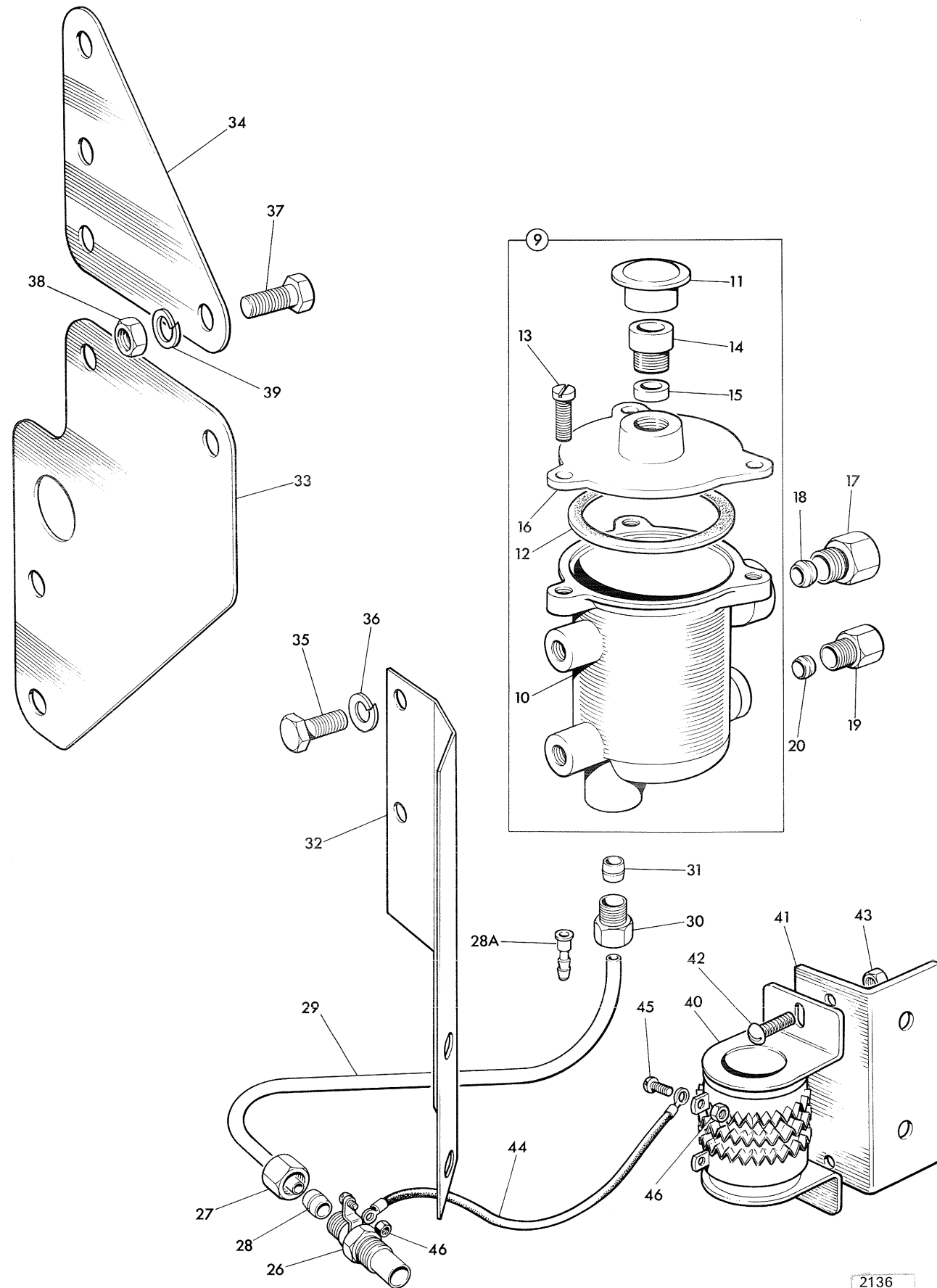


ITEM	PART No.	CHANGE No.	DESCRIPTION	QUANTITY	OFF BUILD
				S	
1	256/35300 255/17000	E354U356806TL	Mounting Bracket R.H.	1	
2	256/35400 255/16900	E354U356806TL	Mounting Bracket L.H.	1	
3	0826625 0828407	E354U356806TL	Stud	8	
4	1340/0303 1340/0603	E354U356806TL	Nut	8	
5	1305/3426	Bolt	4	
6	1340/0403	Nut	4	
7	See m/c Catalogue		Oil Cooler Mounting Bar	1	
8	256/00244	Mounting Pad	6	
9	256/00245	Mounting Plate	4	
10	256/00246	Backing Plate	2	
11	658/00211	Spacer	4	
12	1411/0004 1411/0007	E354U356806TL	Washer	16	
13	255/37501	† * REDUCING BUSH		8	

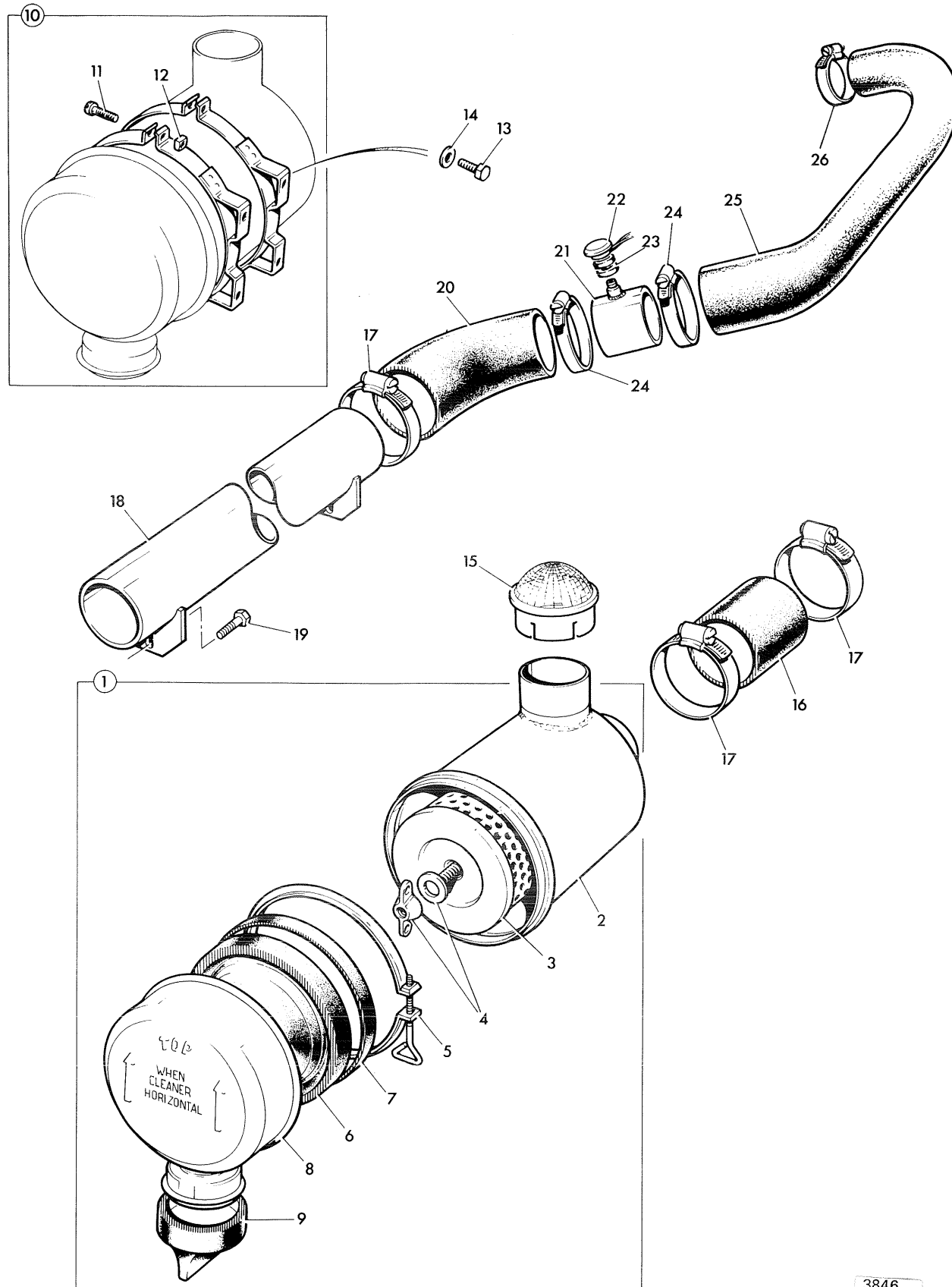
† USE WITH 8 OFF-0826625 AND
8 OFF-1340/0303 WHERE A REPLACEMENT
ENGINE HAS 7/16" TAPPINGS.

ITEM	PART No.	CHANGE No.	DESCRIPTION	QUANTITY OFF BUILD			
				R	X	Y	
1	37782621	Exhaust Manifold	1	1	1
2	36862124	Gasket	1	1	1
3	36866723	Gasket	1	1	1
4	36847124	Gasket	1	1	1
5	0826420 0826403 0826410	Superseded	* Stud		9 9 9	9	9
6	2211224 2188135	Nut	9	9	9
7	33115117	Washer	9	9	9
8	2725526	Circlip-Not Illustrated	2		





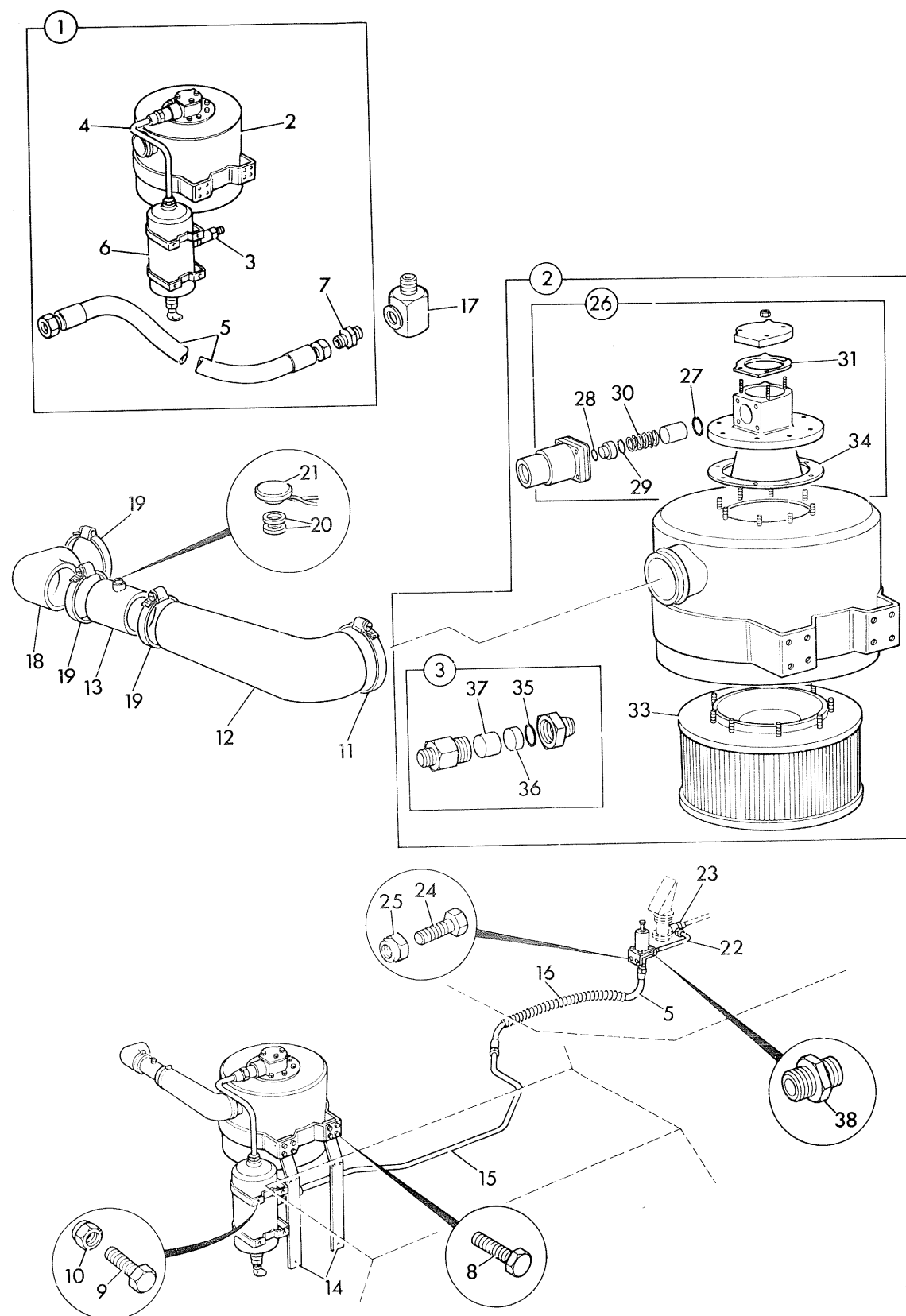
ITEM	PART No.	CHANGE No.	DESCRIPTION	QUANTITY	OFF BUILD
				D	R
9	41374423 41374433	Container Assembly	1 1
10	37721571 37221561	:Container	1 1
11	37725118	:Cover	1 1
12	0490687	:Gasket	1 1
13	2152173	:Screw	3 3
14	35629	:Check Valve	1 1
15	2413018	:Washer	1 1
16	37416501	:Cap	1 1
17	See Fuel System			Nut	
18	See Fuel System			Olive	
19	33532127	Nut	1 1
20	33811112	Olive	1 1
26	2666104	Superseded	*Heater 24 VOLT		1 1
	2666103		Heater-Screw Terminal		1 1
	2666108	Alternative	*Heater-Lucar Terminal		1 1
27	33225412 0576111	Nut	1 1
28	33811112 0566002	Olive	1 1
28A	Not Required on these applications				
29	35842098 200/97002	Pipe	1 1
30	33532127 0571351	Nut	1 1
31	33811112 0566002	Olive	1 1
32	36237145 200/77106	Bracket	1 1
	Items 33 and 34 N/R on these applications.				
35	0746051 1305/0003	Bolt	2 2
36	0920052 1416/0004	Spring Washer	2 2
	Items 37,38 and 39 N/R on these applications				
40	2861061	*Resistor 24V TO 12V	1
41	253/07203	Bracket	1
42	4040204K 1360/0202	Superseded		Bolt	2
43	1358/0201	Nut	2



ITEM	PART No.	CHANGE No.	DESCRIPTION	QUANTITY	OFF BUILD
					X
1	32/202300	Air Filter Assembly	1	
2	N.S.P.	:Body	1	
3	32/201602	:Element	1	
4	32/202302	:Nut and Gasket	1	
5	32/201603	:Clamp	1	
6	32/201605	:Baffle	1	
7	32/201604	:Gasket	1	
8	32/202301	:Cup Assembly	1	
9	32/200401	Superseded	:Dust Valve	1	
	37H1495				
10	32/201700	.S/S	* Clamp Assembly	2	
11	32/201701	:Bolt	2	
12	32/201702	:Nut	2	
13	1305/0204	Bolt-Clamp to Frame	4	
14	1416/0006	Spring Washer	4	
15	32/202100	Stack Cap	1	
16	834/00020	Hose-Filter to Ind.Pipe	1	
17	2201/0018	Hose Clip	3	
18	206/55700	Induction Pipe	1	
19	1305/0208	Bolt	2	
20	834/00022	Hose	1	
21	204/54200	Superseded	Induction Tube Assembly	1	
	201/57700				
22	701/00500	Vacuum Switch	1	
23	256/00238	Felt Disc	2	
24	2201/0017	Hose Clip	2	
25	834/00024	Induction Hose	1	
26	2201/0014	Hose Clip	1	



3 4-14 SELF-CLEANING AIR FILTER



ITEM	PART No.	CHANGE No.	DESCRIPTION	QUANTITY	OFF BUILD
				S	
1	32/202400	Air Filter Kit	1	
2	32/202401 32/204300	No./Con.	:Air Filter Assy.	1	
3	32/202402 32/204200	No./Con.	:Restrictor & Line Filter	1	
4	32/202403	:Hose Assembly	1	
5	32/202404	:Hose Assembly	1	
6	32/202405	:Air Bottle Assembly	1	
7	32/202406	:Adapter	1	
8	1305/0205	Bolt	14	
9	1305/0103	Bolt	3	
10	1340/0103	Nut	3	
11	2201/0017	Clip	1	
12	834/00017	Hose	1	
13	256/43100	Pipe	1	
14	256/43200	Bracket	2	
15	256/43300 256/56300	To M5420	Pipe	1	
16	256/13202	*Hose Cover - Row	1	A/R.
17	816/00428 816/00460	To M5420 Superseded Deleted	Adapter	1	
18	834/00006	Hose Elbow	1	
19	2201/0015	Clip	3	
20	256/00238	Felt Washer	2	
21	701/00500	Restriction Indicator	1	
22	256/52200	Pipe	1	
23	15/206610	Tee Piece	1	
24	1305/0003	Bolt	2	
25	1340/0003	Nut	2	
26	32/203900	#Blowing Unit	1	
27	32/203902	: 'O' Ring	1	
28	32/203904	: 'O' Ring-Piston	1	
29	32/203906	: 'O' Ring-Main Block	1	
30	32/203907	: Spring-Body Valve	1	
31	32/203912	: Gasket	1	
32	32/203915	: Gasket	1	
33	32/202407	#Element	1	

3845A