

INTRODUCTION

INTRODUCTION

To bring better customer service and better spare parts supply, please note the following four points when referring to this Parts Catalog.

I. HOW TO USE THIS PARTS CATALOG

- A. The Publication Number of this Parts Catalog is C-0020. Whenever quoting the Parts Catalog, tell us this Pub. No..
- B. All spare parts available for Model G130, 130 series are included here.
- C. Alphabetical section Index and Illustration Index appears on page 45 and 51.
- D. Brief specifications of Model G130, 130 series appear on page 2.
- E. Car Name and abbreviations in the applied model appear on page 14.
- F. The Car Numbers, the Engine Numbers or the Dates in the Part Name column indicate the application of the parts which were changed. The location of the car No. and the engine No. appears on page 15.
- G. Part Number Index is attached to the end of this Parts Catalog.
- H. Alphabetical Index is attached to the end of this Catalog.

II. HOW TO PLACE YOUR ORDERS FROM THE PARTS CATALOG (FOR DISTRIBUTOR USE ONLY)

- A. Typewrite the spare parts which you are going to order on the given Nissan Spare Parts Order Sheet.
- B. At least the Part Numbers and the Quantity must be filled in as accurately as possible. Otherwise our computer may reject your order.
- C. In the case that you can not find the Part No. which you are going to order we shall be very glad to take care of this problem after verifying its availability. Therefore, place your order on another order sheet as a

conditional order, which does not include a Ordinary order, telling us precisely the Part Name, the Place where it is attached and the Quantity - if it is a colored thing or material, attach a sample.

III. HOW TO COMPARE THE CONFIRMATION LIST AND THE PARTS CATALOG (FOR DISTRIBUTOR USE ONLY)

Although all parts contained here are in principle available for supply, if you find some parts shown in the Parts Catalog sorted F/ # U on the confirmation list where the availability of your ordered parts are classified by our computer in respect to our stock control system, kindly tell us the Parts Numbers, the Pub. No. of the Parts Catalog (C-0020), and the Page. We shall be glad to inform you of the availability by the revised confirmation list as soon as possible.

IV. HOW TO ADAPT TO OUR PART NUMBER SYSTEM

In our parts supply system, the Part Number plays a key role. Therefore, you may print only the part numbers and the quantity as long as they do not cause mutual misunderstandings.

For this reason, kindly become familiar with our Part Number System which appears on page 32.

BRIEF SPECIFICATIONS

DIMENSIONS

Model		'69 Year model	G(L) 130 (SUPER, DELUXE) P(L) 130 (PERSONAL) (L) 130 (STANDARD)	WP(L) 130 (WAGON)	VP(L) 130 (VAN)	Q(L) 130 (DIESEL)
		'70 Year model	G(L) 130 (SUPER, CUSTOM) H(L) 130 (P-DX) (L) 130 (STANDARD)	WH(L) 130 (WAGON)	VH(L) 130 (VAN-DX)	Q(L) 130 (DIESEL)
Item	Overall length	4,690 mm (184.7 in.)	4,690 mm (184.7 in.)	4,690 mm (184.7 in.)	4,690 mm (184.7 in.)	4,690 mm (184.7 in.)
	Overall width	1,690 mm (66.5 in.)	1,690 mm (66.5 in.)	1,690 mm (66.5 in.)	1,690 mm (66.5 in.)	1,690 mm (66.5 in.)
	Overall height	1,455 mm (57.3 in.)	1,470 mm (57.9 in.)	1,490 mm (58.7 in.)	1,465 mm (57.7 in.)	1,465 mm (57.7 in.)
	Wheel base	2,690 mm (105.9 in.)	2,690 mm (105.9 in.)	2,690 mm (105.9 in.)	2,690 mm (105.9 in.)	2,690 mm (105.9 in.)
	Tread-front	1,375 mm (54.1 in.)	1,375 mm (54.1 in.)	1,375 mm (54.1 in.)	1,375 mm (54.1 in.)	1,375 mm (54.1 in.)
	Tread-rear	1,375 mm (54.1 in.)	1,375 mm (54.1 in.)	1,375 mm (54.1 in.)	1,375 mm (54.1 in.)	1,375 mm (54.1 in.)
	Seating capacity	6	8	6+600 kg	6	6

ENGINE

Model Design	'70 year model				'69 year model	
	L24 6cyl. in line 4cycle O.H.C. Gasoline	L20(A) 6cyl. in line 4cycle O.H.C. Gasoline	H20 4cyl. in line 4cycle O.H.V. Gasoline	SD22 4cyl. in line 4cycle O.H.V. Diesel	L23 6cyl. in line 4cycle O.H.C. Gasoline	J20 6cyl. in line 4cycle O.H.V. Gasoline
Bore	83 mm (3.26 in.)	78 mm (3.07 in.)	87.2 mm (3.43 in.)	83 mm (3.35 in.)	83 mm (3.26 in.)	73 mm (2.87 in.)
Stroke	73.7 mm (2.90 in.)	69.7 mm (2.74 in.)	83 mm (3.26 in.)	100 mm (3.94 in.)	69.7 mm (2.74 in.)	78.6 mm (3.09 in.)
Displacement	2,393 cc (146.0 cu. in.)	1,998 cc (120.9 cu. in.)	1,982 cc (121 cu. in.)	2,164 cc (132 cu. in.)	2,262 cc (138 cu. in.)	1,973 cc (120 cu. in.)

FUEL SYSTEM; "HITACHI" dual barrel down draft type carburetor ("NIKKI" 130 (H20) series only); Mechanical type diaphragm pump; Wet paper element type air cleaner; Fuel tank capacity 65ℓ (17.2U.S. gal.) Sedan series and 57ℓ (15.1U.S. gal.) Wagon and Van series.

LUBRICATION SYSTEM; Pressure feed with full-flow cartridge type (paper element type Q130(SD22) series) oil filter; Gear type oil pump (Rotor type oil pump J20 engine only); Oil pan capacity 4.0ℓ(1.06 U.S. gal.) G130 (L23) series, 4.1ℓ (1.08 U.S. gal.) G130 (L24), H130, WH130 & VH130 (L20(A))series, 3.9ℓ(1.03 U.S. gal.) (W) (V) P130 (J20) series, 3.3ℓ (0.87 U.S. gal.) 130 (H20) series and 3.8ℓ (1.08 U.S. gal.) Q130 (SD22) series.

IGNITION SYSTEM; Coil and distributor with mechanical and vacuum control.

COOLING SYSTEM; Corrugated fin and tube type radiator with centrifugal pump; Pellet-type thermostat; Cooling water capacity 8.4ℓ(2.22 U.S. gal.) G130 (L23) series, 9.5ℓ (2.1 U.S. gal.) G130 (L24), H130, WH130 & VH130 (L20(A)) series, 8.2ℓ (2.17 U.S. gal.) (W)(V) P130 (J20) series, 7.7ℓ (2.03 U.S. gal.) 130 (H20) series and 9.1ℓ(2.38 U.S. gal.) Q130 (SD22) series for with heater.

ELECTRIC SYSTEM; 12 volt, 50 AH or 60 AH battery; 300W, 500W or 12V-40AH alternator with regulator; 12V-1.4HP magnetic shift starter (negative earth).

CLUTCH; Single, dry disc with diaphragm spring.

TRANSMISSION; 3 or 4 forward speeds and 1 reverse; All synchromeshed on forward gears; 3-speed automatic transmission.

Continued on page 4

INTRODUCTION

Type and application;

T/M type Applied date	R3W71A (3 speed)		R4W71A (4 speed)		3N71A (Automatic)	
	'69 year model	'70 year model	'69 year model	'70 year model	'69 year model	'70 year model
T/M control method	Remote control					
1st. 2nd. 3rd. 4th. Rev.	3.184 1.641 1.000 — 2.922		3.549 2.197 1.420 1.000 3.164		2.458 1.458 1.000 — 2.182	
Applied model	G(L)130... (SUPER P-2300) P(L)130... (DELUXE P-2000) WP(L)130...(WAGON) (L)130(STD) Q(L)130.....(DIESEL)	G(L)130...(SUPER P-DX2400) H(L)130...(CUSTOM P-DX2000)	G130UX..(SUPER for SOUTH AFRICA) op G(L)130..(SUPER P-2300) op GL130E..(SUPER,P-2300 High speed area) VP(L)130-(VAN)	G130UX.....(SUPER for SOUTH AFRICA) GL130E.....(SUPER,P-DX2400 High speed area) HL130E.....(CUSTOM,P-DX2000 High speed area) (L)130(E).....(STANDARD) Q(L)130(E)....(DIESEL) WH(L)130(E)..(WAGON) VH(L)130(E)..(VAN-DX)	G(L)130A....(SUPER P-2300) P(L)130A....(DELUXE P-2000) WP(L)130A...(WAGON)	G(L)130A...(SUPER P-DX2400) H(L)130VA-(CUSTOM) WH(L)130...(WAGON)

Final gear hypoid;

Applied model Gear ratio	'69 year model	'70 year model
4.111	G(L) 130 V (SUPER) G(L) 130 S (P-2300) P(L) 130 UK (DELUXE) PL 130 SU (P-2000 L DRIVE) WP(L) 130 UK (WAGON) L130 US (STD L DRIVE) Q(L) 130 U (DIESEL) op GL 130 V (SUPER L DRIVE) op GL 130 SU (P-2300 L DRIVE)	G(L) 130 U (SUPER) G130 UX (SUPER for SOUTH AFRICA) G(L) 130 QU (P-DX 2400) H(L) 130 VU (CUSTOM) H(L) 130 QU (P-DX 2000) WH(L) 130 U (WAGON) (L) 130 SU (STD) Q(L) 130 U (DIESEL)
4.375	P 130 SU (P-2000 R DRIVE) 130 SU (STD R DRIVE) VP(L) 130 U (VAN) Q 130 U (DIESEL R DRIVE) L 130 S (STD L DRIVE)	VH(L) 130 U (VAN)
3.889	GL 130 VE (SUPER High speed area) GL 130 SE (P-2300 High speed area) G 130 UX (SUPER for SOUTH AFRICA) op G(L) 130 V (SUPER) op G(L) 130 S (P-2300)	GL 130 E (SUPER High speed area) GL 130 QE (P-DX 2400 High speed area) HL 130 VE (CUSTOM High speed area) HL 130 QE (P-DX 2000 High speed area) WHL 130 E (WAGON High speed area)

B-C

FRONT SUSPENSION; Independent with coil springs and torsion bar type stabilizer.

REAR SUSPENSION; Semi-elliptic spring and telescopic double acting shock absorbers.

STEERING; Right or left hand drive; Recirculating ball type; Ratio 19.8 : 1.

BRAKES; Front disc brake (G130V or G130U—Super—; H130V—CUSTOM—series), front 2 leading (G130S or G130Q—P—DX2400—, P130UK—DELUXE—, P130S—P-2000—, H130Q—P-DX2000—, WP130 or WH130—WAGON—, VP130 or VH130—VAN—, L130—STD— and Q130—DIESEL— series); Rear leading and trailing shoe; Brake drum dia. 241.3 mm (9.5 in.) and 250 mm (9.85 in.) (Disc front, 241.3 mm (9.5 in.) rear; Parking brake mechanically operated on rear wheels only.

WHEELS AND TIRES; steel disc wheels; Tires (see below)

Applied date	Tire size	Applied model
'69 year model	7.00-13-4PR (WHITE)	G(L) 130V (SUPER) G(L) 130S (P-2300) P(L) 130UK (DELUXE) P(L) 130S (P-2000) WP(L)130 (WAGON)
	7.00-13-4PR (BRACK)	(L) 130S (STD) Q(L) 130 (DIESEL)
	6.00-13-6PRLT & 6.00-13-8PRLT (WHITE)	VP(L) 130 (VAN)
'70 year model	6.95-14-4PR (TUBELESS)	G(L) 130U (SUPER) G(L) 130Q (P-DX2400) H(L) 130V (CUSTOM) H(L) 130Q (P-DX2000)
	6.40-14-4PR	(L) 130S (STD) Q(L) 130 (DIESEL)
	6.00-13-6PRLT & 6.00-13-8PRLT	VH(L) 130 (VAN-DX)

"LT" means light truck tire.

LAMPS; Two dual head lights (sealed beam)with dipping; two parking and turn signal lights; Two combined stop tail and turn signal lights; Room lights; Rear license light; Back-up lights; Side directional lights.

INSTRUMENTS; Speedometer with trip meter; Fuel gauge; Water temperature gauge; Ignition warning light; Oil pressure warning light; Turn signal pilot light; Main beam warning light; Parking brake warning light; Brake safety warning light; On instrument panel, ignition and starter switch, lighting switch, choke control knob, windshield wiper switch, Four-way flasher switch, fresh air control levers and glove box.

BODY WORKS; Four-door sedan; Five-seater with adjustable front semi-separate seat and bench seats; All steel body full upholstered with vinyl leather; Dual self-parking windshield wiper with washer; Room light, door switches on both sides; Turn signal lever with dimmer switch unit; Interior back mirror; Safety glass on all windows and doors; Door window curved glass; Two sunvisors; Ash trays, front and rear; Vinyl floor mat; Safety belt anchorages (front: 2 point and 3 point, rear: lap); Fuel tank filler cap lock; Trunk floor mat; Moulding sill, windshield, back window, drip channel; Rear door pull handle (super, deluxe only); Full flow ventilator.

EQUIPMENT APPLICATION

Equipment (alphabetical order)	Applied date		'69 year model						'70 year model					
	Car name		SUPER	DELUXE	PERSONAL	STD & DIESEL	WAGON	VAN	SUPER	CUSTOM	PERSONAL DELUXE	STD DIESEL	WAGON	VAN-DX
Anti-sun glass			○	○	op	op	○	op	○	○	○	×	○	○
Assist side sunvisor			○	○	op	op	○	op	○	○	op	op	○	op
Assist strap (rear)			○	○	op	op	op	op	○	○	op	op	op	op
Back window moulding			○	○	○	×	○	○	○	○	○	×	○	○
Battery (100 A.H)			×	×	×	op★	×	×	×	×	×	op★	×	×
Cigarette lighter			○	○	op	op	op	op	○	○	op	op	op	op
Coat hanger			○	○	op	op	op	op	○	○	op	op	op	op

Equipment (alphabetical order)	'69 year model						'70 year model					
	SUPER	DELUXE	PERSONAL	STD & DIESEL	WAGON	VAN	SUPER	CUSTOM	PERSONAL DELUXE	STD & DIESEL	WAGON	VAN-DX
Collapsible steering	op	op	op	op	op	op	op	op	op	op	op	op
Drip channel moulding	○	○	○	×	○	×	○	○	○	×	○	×
Floor carpet	○	○	○	×	○	×	○	○	○	×	○	×
Floor vinyl mat	×	×	×	○	×	○	×	×	×	○	×	○
Front disc brake & master vac(9")	op	op	op	×	×	×	○	○	op	×	×	×
G valve	×	×	×	×	×	×	○	×	×	×	×	×
Master vac (6")	○	○	op	op☆	op	op	×	×	op	op☆	op	op
Outside rear view mirror on floor	op*	op*	op*	op*	op*	op*	op*	op*	op*	op*	op*	op*
Outside rear view mirror on fender	op*	op*	op*	op*	op*	op*	op*	op*	op*	op*	op*	op*
Package tray	○	○	op	op	○	op	○	○	op	op	○	op
Power steering	×	×	×	×	×	×	op(RD)	×	×	×	×	×
Spare wheel cover	○	○	op	op	op	op	○	○	op	op	op	op
Steering lock	op	op	op	op	op	op	○	○	○	op(LD) x(RD)	○	op
Tandem master cylinder	○	op	op	op	op	op	○	○	op	op	op	op
Tire (white sidewall)	○	○	○	op	○	op	○	○	op	op	○	op
Trip recorder	○	○	op	op	op	op	○	○	op	op	op	op
Trunk room mat	○	○	×	×	×	×	○	○	×	×	×	×
Trunk room side trim	○	○	×	×	×	×	○	○	×	×	×	×

○ Standard equipment

×

op Factory optional equipment

* Optional equipment which should be installed at distributor

op☆ Optional equipment for "DIESEL" only

op☆ Optional equipment for "STD DRIVE" only

OPTIONAL PARTS FOR ALL MODELS; Heater; Car cooler; Clock; Radio; Safety seat belt (front and rear); 4 way flasher; Passing light; Steering lock (for '69 year model); Long life coolant 50% (-35°C, -31°F); Tubeless tire (for '69 year model) Anti-lift wiper blade; 60 A.H. battery; Head restraint (front and rear); Safety inside back mirror.

These specifications are subject to change without notice.

EXPLANATION OF EACH COLUMN

PART CATALOG

1. 'S' column (preceding the KEY No. column)
(DISTRIBUTOR USE ONLY)

- * Signifies that the part no. has been removed.
If the part no. A is preceded by "*", the part no. A appears in the SUPERSEDED column of the part no. B.
In this case the part no. B is the superseding part of the part no. A.
- # The parts preceded by "#" are conditional order items. Place the order as specified in the Nissan Parts S.O.P..

2. KEY NO. column

A KEY NO. consists of 5 digits.
The first 3 digits play the role of connecting the part no. to the part in the Illustration.
When the first 3 digits are blank, it means the same key number as above. The last 2 digits are merely suffix to show the sequence.
The KEY NOS. may be changed at each revision.

3. PART NO. column

PART NO. is as a rule ten digits.
However, 12-digit PART NO. may rarely appear.
Moreover PART NO. column shows level of the component parts as below;

	PART NO.	
	ASSEMBLY
	—	SUBASSEMBLY-A
	—	COMPONENT-A
	—	COMPONENT-B
	—	COMPONENT-C
	—	SUBASSEMBLY-B

ASSEMBLY includes SUBASSEMBLY-A and SUBASSEMBLY-B.
SUBASSEMBLY-A includes COMPONENT-A.
COMPONENT-A includes COMPONENT-B and COMPONENT-C.

4. DESCRIPTION column

Part name is shown in this column.
"INC" is the abbreviation of "including".

5. Q'TY column

The quantity in this column shows the pieces of the part used in the section.
"AR" is the abbreviation of "as required".

6. UNIT PKG column (DISTRIBUTOR USE ONLY)

UNIT PKG column indicates the pieces which are contained in a packing box.
Place the order for a part multiplying its unit package (ex. UNIT PKG 10---- make your order by 10,20,30,----).
Then you will receive the part in a form easily to be stored into the bin.

7. APPLIED MODEL column

Applied model is described in this column.

8. APPLIED DATE column

In case of the annual model change, the applied date is used as the abbreviation in stead of the actual Car No. or Engine No..
The APPLIED DATE column signifies this applied date. For example, from "10 69" stands for 1970 year model and you can find the actual Car No. by referring to the "Car No. and Engine No." section in the introduction.
On those pages, the applied date and actual Car Nos. are described together with picture of the annual model.
If "NOTE" appears in the APPLIED DATE column, see NOTE column at the foot of the page.
You can find the actual Car No. or Engine No. there.

B-C

INTRODUCTION

9. ICA column

ICA is the abbreviation of Interchangeability.

9-1 N column

The code in the N column signifies whether the part in the PART NO. column is substitutive for the part in the SUPERSEDED column or not.

9-1 F column

The code in the F column signifies whether the part in the SUPERSEDED column is substitutive for the part in the PART NO. column or not.

"Y" is the abbreviation of Yes (i.e. Substitutive)

"N" is the abbreviation of No (i.e. Not Substitutive)

"C" is the abbreviation of Condition (i.e. Substitutive with condition)

In the case of "C", the details of the condition are described in the NOTE column or ILLUSTRATION.

10. SUPERSEDED column

This column signifies the superseded part no. of the part in the PART NO. column.

11. CAR NAME AND ABBREVIATIONS IN THE APPLIED MODEL

The car name and abbreviations used in the applied model column are as follows. These car name are taken by each model type, equipment (i.e. Deluxe and Standard), the position of steering wheel, the transmission system, the displacement of the engine, sedan or wagon and the destinations.

Car name and abbreviations ('69 year model);

Car name	Model	Part type	Style	Handle
SUPER	G130-V	- E17	4 DOOR SEDAN	Right hand drive (R Drive or R D)
SUPER (SOUTH AFRICA)	G130-UX	- E17		
DELUXE	P130-UK	- E02		
P-2300	G130-S	- E17		
P-2000	P130-SU	- E03		
STANDARD (or STD)	130-SU	- E07		
DIESEL	Q130-U	- E09		
WAGON	WP130-UK	- E05	WAGON & VAN	
VAN	VP13-U	- E04		
SUPER	GL130-V	- E18	4 DOOR SEDAN	Left hand drive (L Drive or L D)
SUPER (SOUTH AFRICA)	GL130-VE	- E18		
DELUXE	PL130-UK	- E12		
P-2300	GL130-S	- E18		
P-2000	PL130-SU	- E18		
STANDARD (or STD)	L130-SU	- E13		
DIESEL	QL130-U	- E19		
DIESEL	QL130-UE	- E19		
WAGON	WPL130-UK	- E15	WAGON & VAN	
VAN	VPL130-U	- E14		

E means "USE for HIGH SPEED AREA".

continued on page 9

Car name and abbreviations ('70 year model);

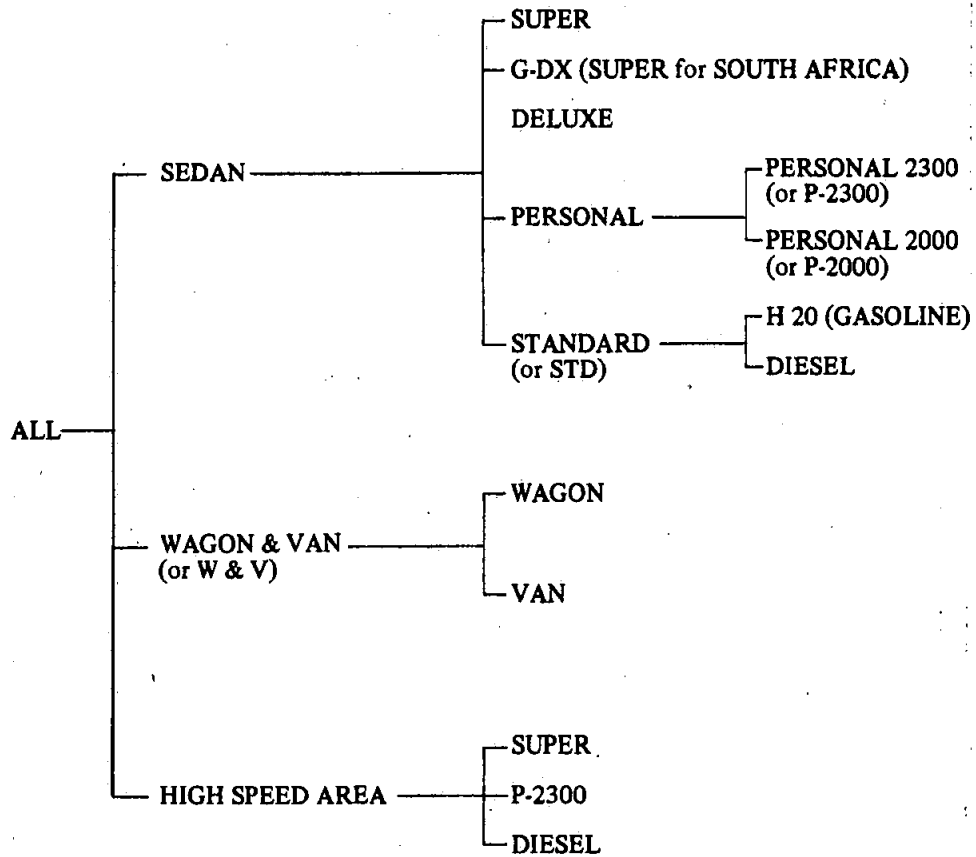
Car name	Model	Part type	Style	Handle
SUPER	G 130-U	- E31	4 DOOR SEDAN	Right hand drive (R Drive or R D)
SUPER (SOUTH AFRICA)	G 130-UX	- E31		
CUSTOM	H 130-VU	- E30		
P-DX 2400	G 130-QU	- E31		
P-DX 2000	H 130-QU	- E30		
STANDARD (or STD)	130-SU	- E34		
DIESEL	Q 130-U	- E34		
WAGON	WH 130U	- E35	WAGON & VAN	
VAN-DX	VH 130-U	- E35		
SUPER	GL 130	- E33	4 DOOR SEDAN	Left hand drive (L Drive or L D)
SUPER	GL 130 E	- E33		
CUSTOM	HL 130-V	- E36		
CUSTOM	HL 130-VE	- E36		
P-DX 2400	GL 130-Q	- E33		
P-DX 2400	GL 130-QE	- E33		
P-DX 2000	HL 130-Q	- E36		
P-DX 2000	HL 130-QE	- E36		
STANDARD (or STD)	L 130-S	- E37		
DIESEL	QL 130	- E37		
WAGON	WHL 130	- E38	WAGON & VAN	
WAGON	WHL 130 E	- E38		
VAN-DX	VHL 130	- E38		

E means "USE for HIGH SPEED AREA"

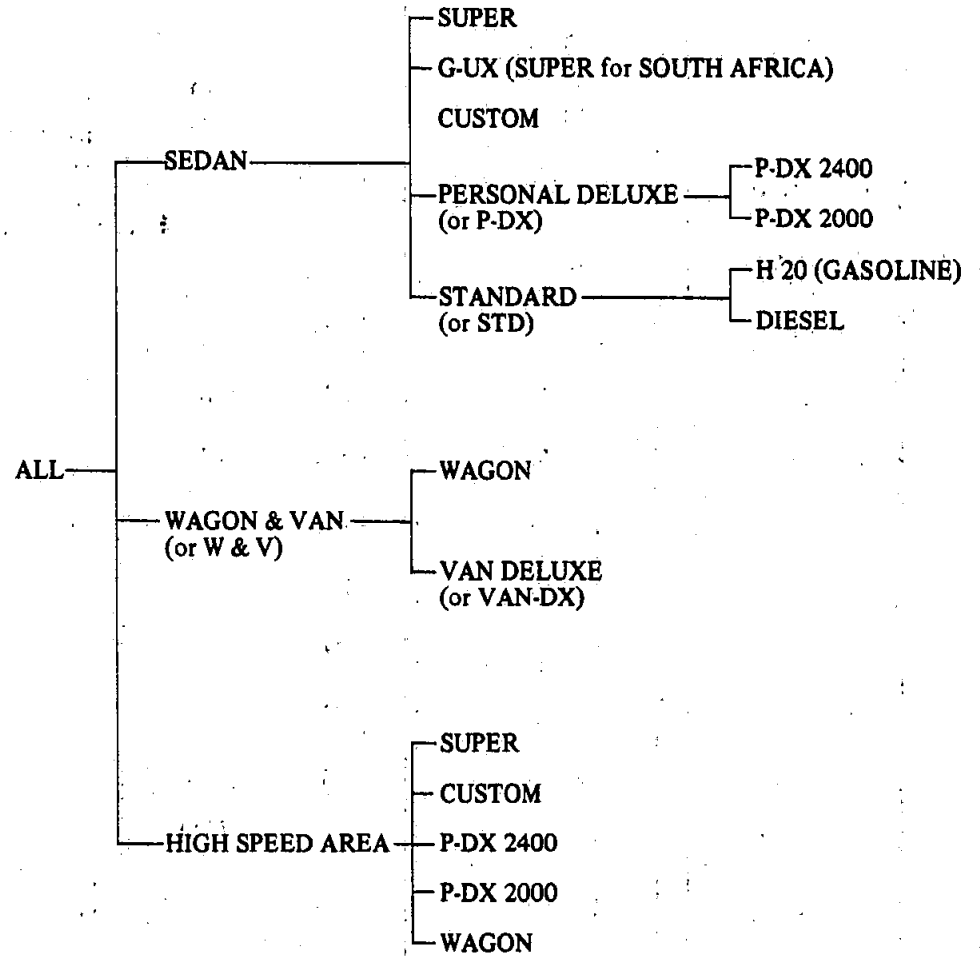
INTRODUCTION

Classification of car name in the applied model;

Style group ('69 year model)

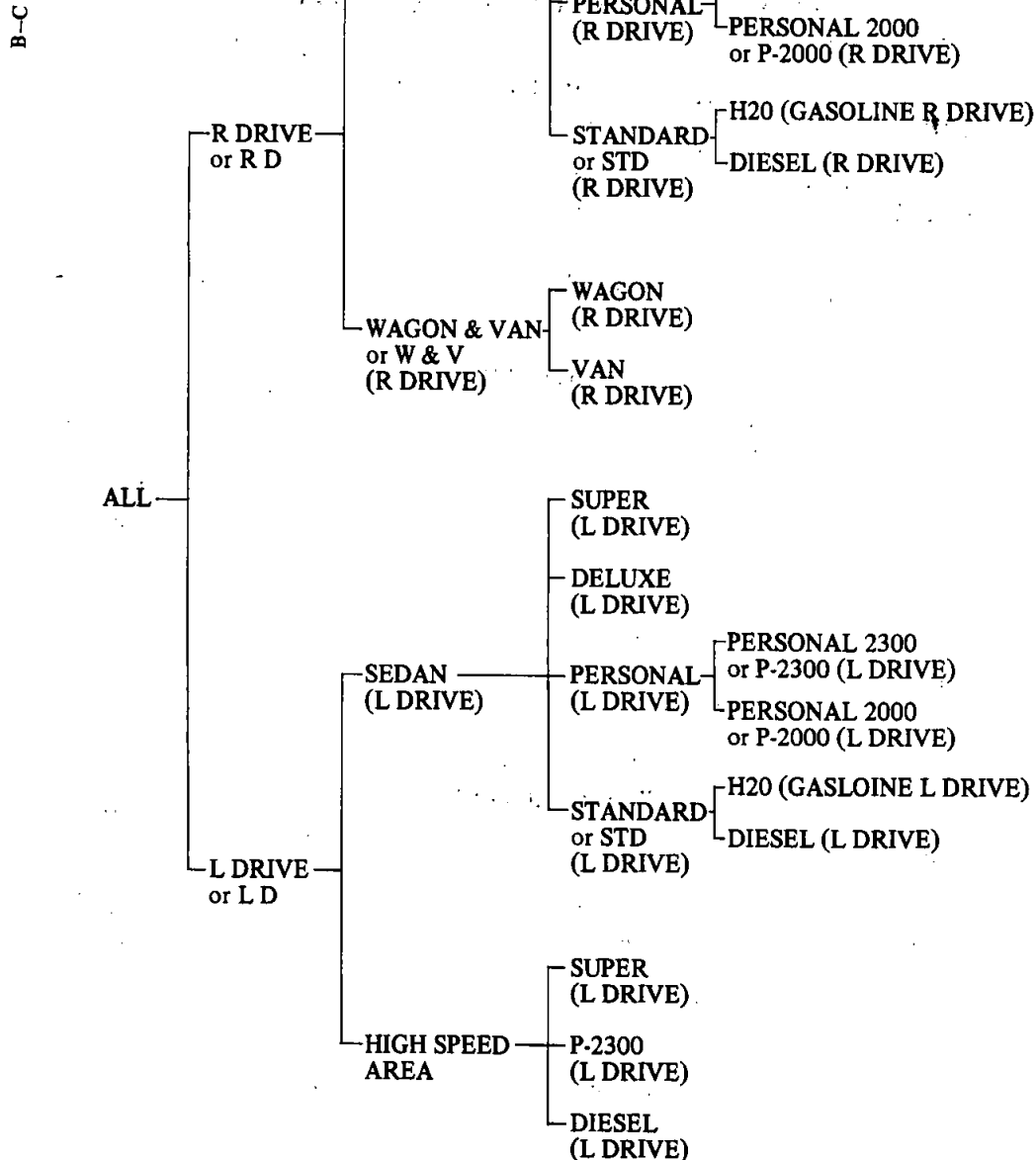


Style group ('70 year model)

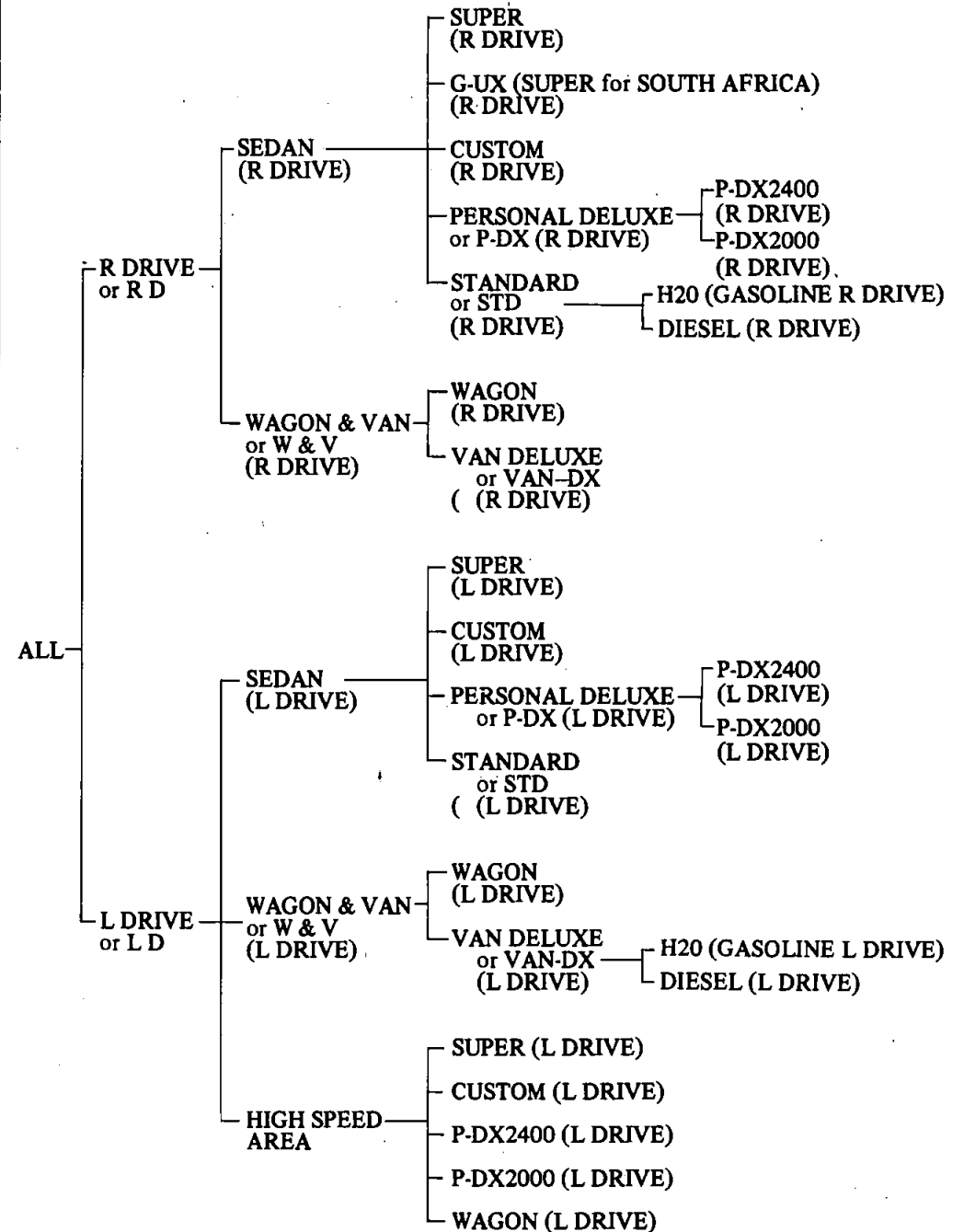


B-C

Handle group ('69 year model)

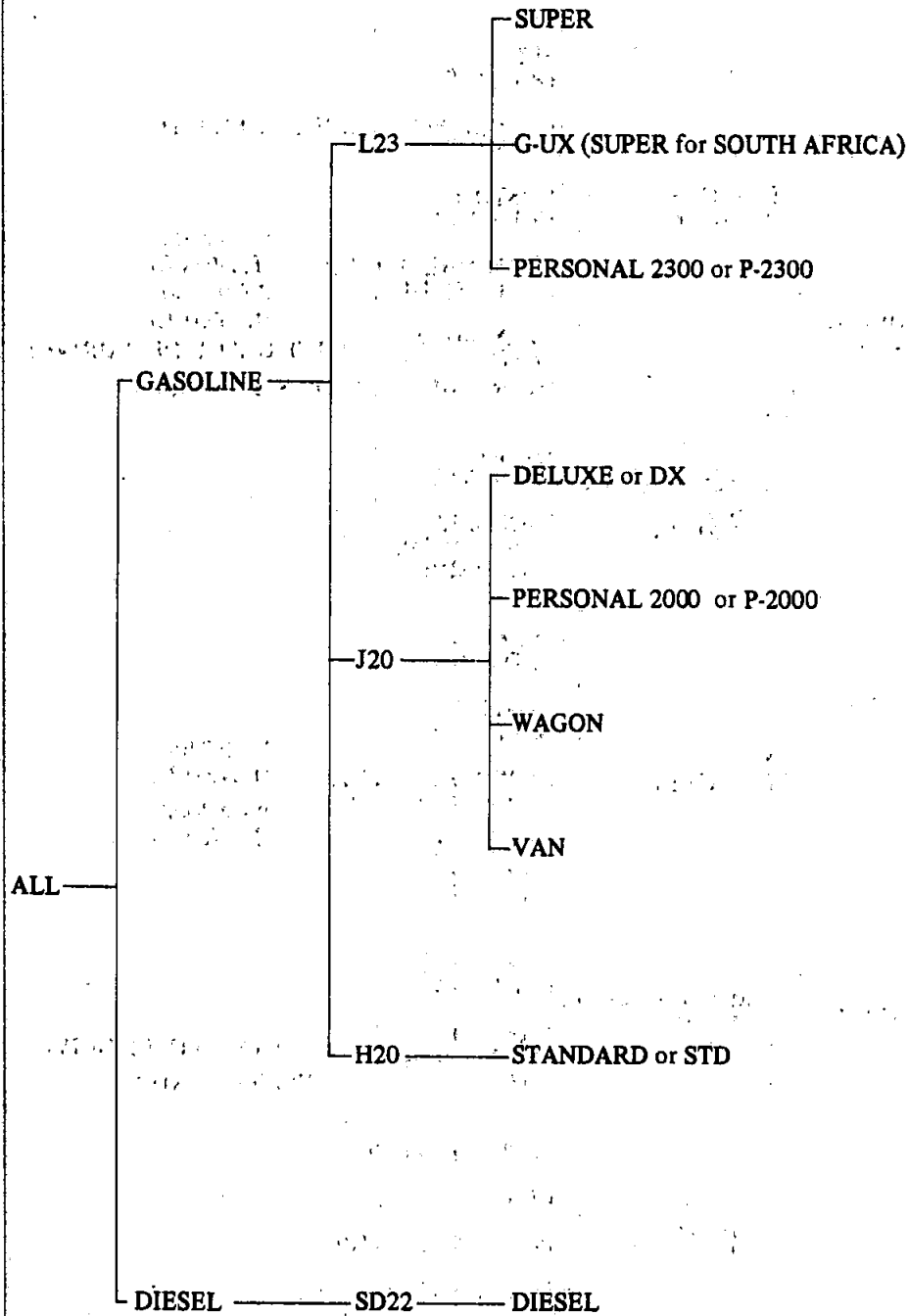


Handle group ('70 year model)

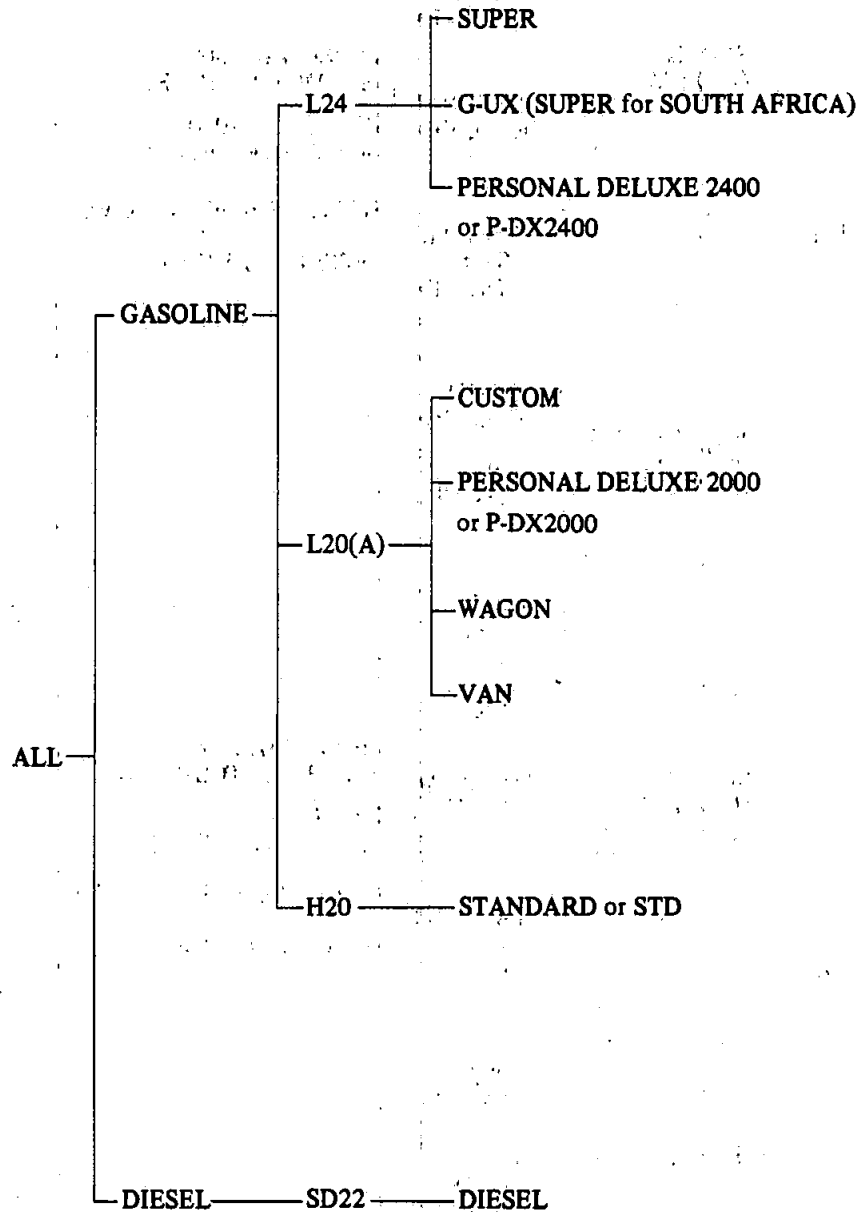


INTRODUCTION

Engine group ('69 year model)

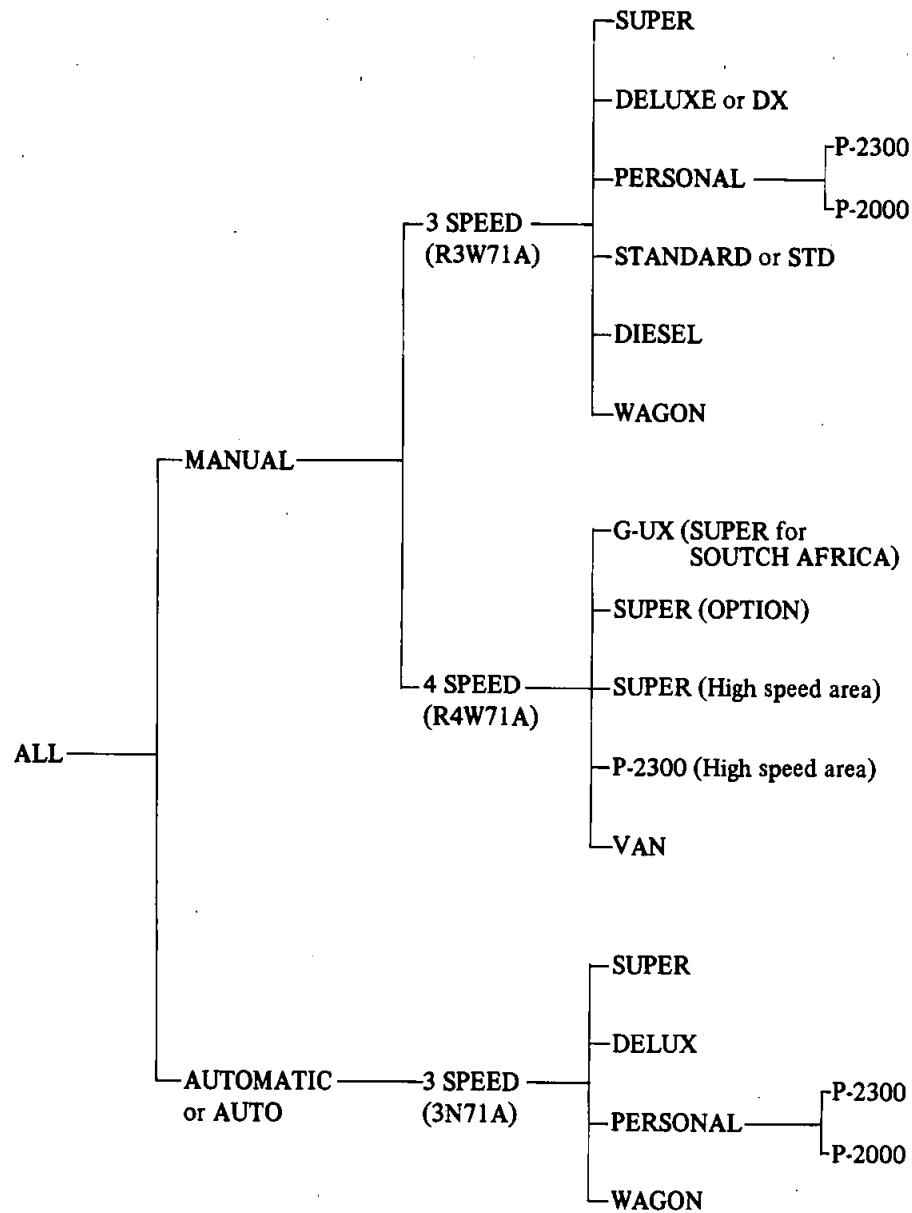


Engine group ('70 year model)

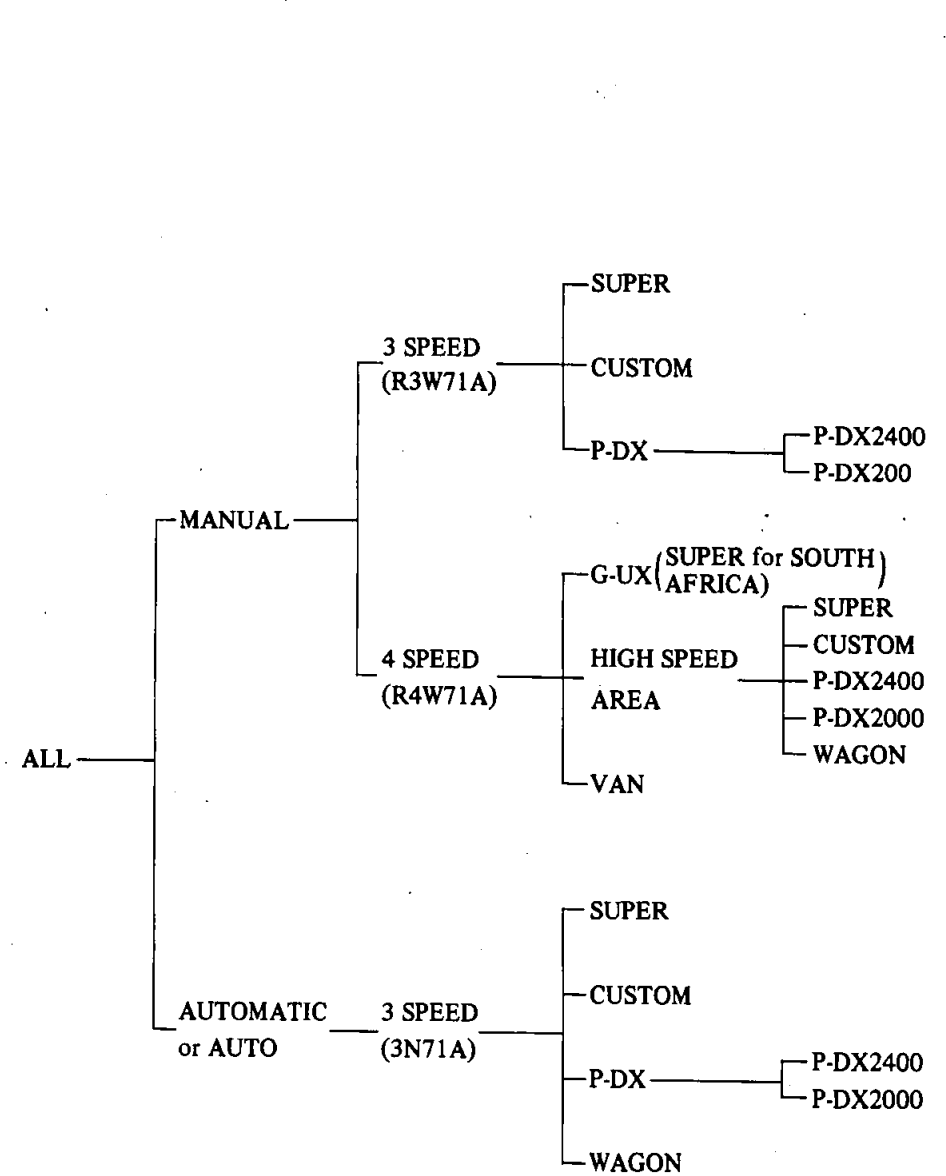


B-C

Transmission group (69 year model)



Transmission group ('70 year model)



B-C

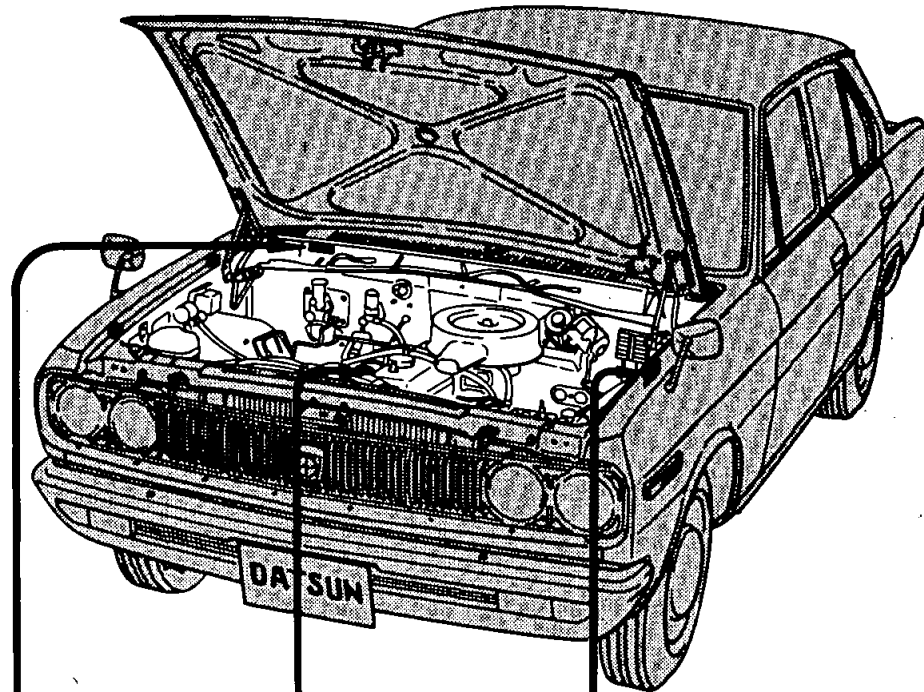
CAR NAME & GROUP SYMBOLS

ALL.....	The part is used on <u>all types</u> of Datsun 2400, Datsun 2300 Sedan, Datsun 2000 Sedan, wagon and Van G130 and 130 model.	W & V	The part is used on 130 <u>Wagon and Van or Wagon and Van Deluxe.</u>
SUPER	The part is used on <u>super six type</u> of Datsun Sedan G130 model.	R DRIVE (or RD).....	The part is used on <u>all right hand drive</u> G130 and 130 model.
G-UX	The Part is used on <u>super six type</u> of Datsun Sedan G130 model for SOUTH AFRICA.	L DRIVE (or LD)	The Part us used on <u>all left hand drive</u> G130 and 130 model.
CUSTOM	The part is used on <u>custom six type</u> of Datsun Sedan H130 model (<u>'70 year model</u>).	3 SPEED	The part is used on G130 and 130 model <u>with a 3-speed manual transmission.</u>
DELUXE (or DX)	The part is used on <u>deluxe type</u> of Datsun 2000 Sedan 130 model (<u>'69 year model</u>).	4 SPEED	The part is used on G130 and 130 model <u>with a 4-speed manual transmission.</u>
PERSONAL DELUXE	The part is used on <u>personal deluxe six type</u> of Datsun 2400 Sedan G130 and H130 model (<u>'70 year model</u>).	MANUAL	The part is used on G130 and 130 model <u>with a manual transmission.</u>
(or P-DX)		AUTOMATIC (or AUTO)	The part is used on G130 and 130 model <u>with an automatic transmission.</u>
PERSONAL	The part is used on <u>personal six type</u> of Datsun 2300 and Datsun 2000 Sedan G130 and model (<u>'69 year model</u>).	L24	The part is used on G130 model <u>with a 2,393 cc (146.9 cu. in.) engine ('70 year model).</u>
P-DX 2400	The part is used on <u>personal deluxe six type</u> of Datsun 2400 Sedan G130 model (<u>'70 year model</u>).	L23	The part is used on G130 model <u>with a 2,262 cc (138.0 cu. in.) engine ('69 year model).</u>
PERSONAL 2300	The part is used on <u>personal six type</u> of Datsun 2300 Sedan G130 model (<u>'69 year model</u>).	L20(A)	The parts is used on H130, WH130 & VH130 model <u>with a 1,998 cc (120.9 cu. in.) engine ('70 year model).</u>
(or P-2300)		J20	The part is used on 130 model <u>with a 1,973 cc (120.0 cu. in.) engine ('69 year model).</u>
P-DX 2000	The part is used on <u>personal deluxe six type</u> of Datsun 2000 Sedan H130 model (<u>'70 year model</u>).	H20	The part is used on 130 model <u>with a 1,982 cc (121.0 cu. in.) engine.</u>
PERSONAL 2000	The part is used on <u>personal six type</u> of Datsun 2000 Sedan 130 model (<u>'69 year model</u>).	SD22	The part is used on 130 model <u>with a 2,164 cc (132.0 cu. in.) engine.</u>
(or P-2000)		EXC	"EXC" signifies " <u>except</u> ", Accordingly, "ALL EXC USA" means that the part is used on G130 and 130 model except for the U.S.A.
STANDARD (or STD)	The part is used on <u>standard type</u> of Datsun 2000 Sedan 130 model.	ONLY	"ONLY" is used together with the destination. For example, AUSTRALIA ONLY means that the part is exclusively used for Australia.
SEDAN	The part is used on G130 and 130 <u>Sedan.</u>	OP	"OP" signifies the part is <u>optionally</u> equipped.
WAGON	The part is used on 130 <u>Wagon.</u>		
VAN DELUXE	The part is used on H130 <u>Van Deluxe ('70 year model).</u>		
(or VAN-DX)			
VAN	The part is used on 130 <u>Van ('69 year model).</u>		

CAR NO. AND ENGINE NO.

To choose the right parts, always refer to the car Nos. or Engine Nos., which are located in the engine room (see below).

B-C



L24-002025

ENGINE NUMBER
on the wall of the cylinder block

G130-005001

CAR NUMBER
on the cowl dash panel

TYPE PLATE
(CAR NUMBER PLATE)
attached to the hood ledge

DATSUN		TYPE G130
ENGINE CAPACITY		
MAX HP at RPM		
WHEEL BASE		
ENGINE NO.		
CAR NO.		
NISSAN MOTOR CO., LTD.		
YOKOHAMA JAPAN		

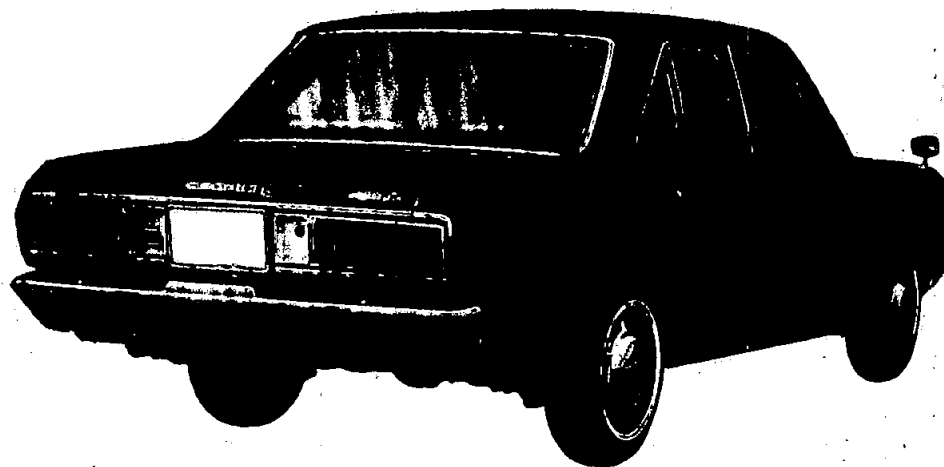
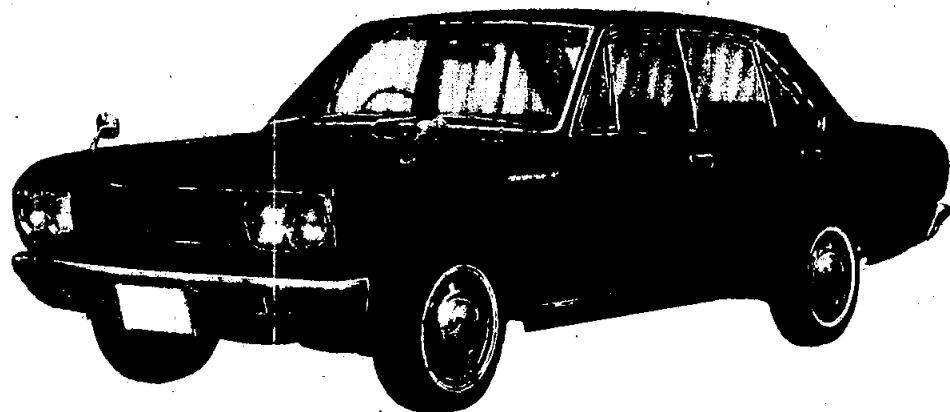
DATSUN 2300 Super Six

MODEL G(L)130-V

(from SEP-'68)

(from C/ # G130-000011)

(from C/ # GL130-000001)



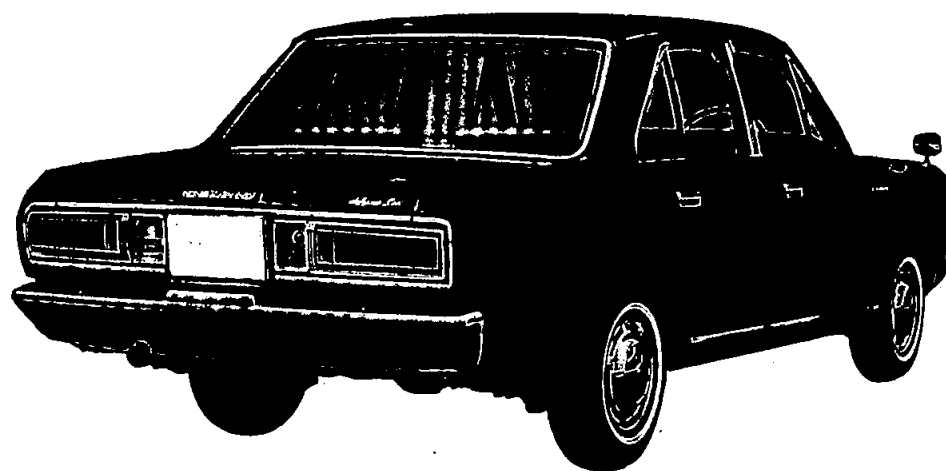
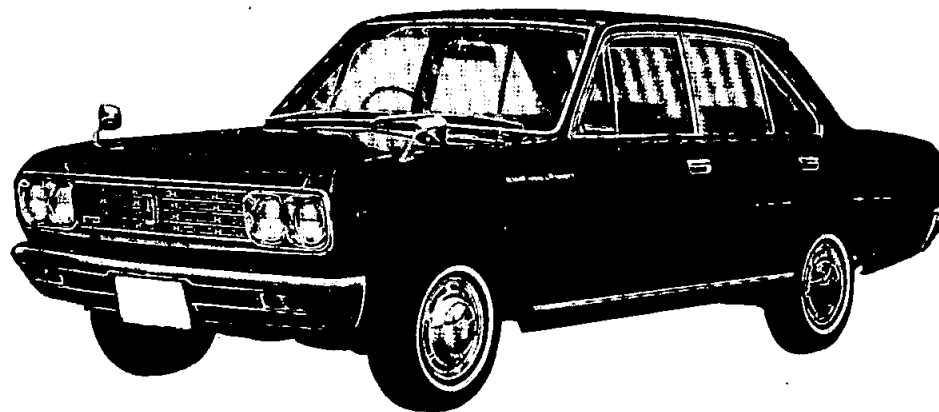
DATSUN 2000 Deluxe Six

MODEL P(L)130-U

(from SEP-'68)

(from C/ # P130-038001)

(from C/ # PL130-003601)



DATSUN 2300 Personal Six

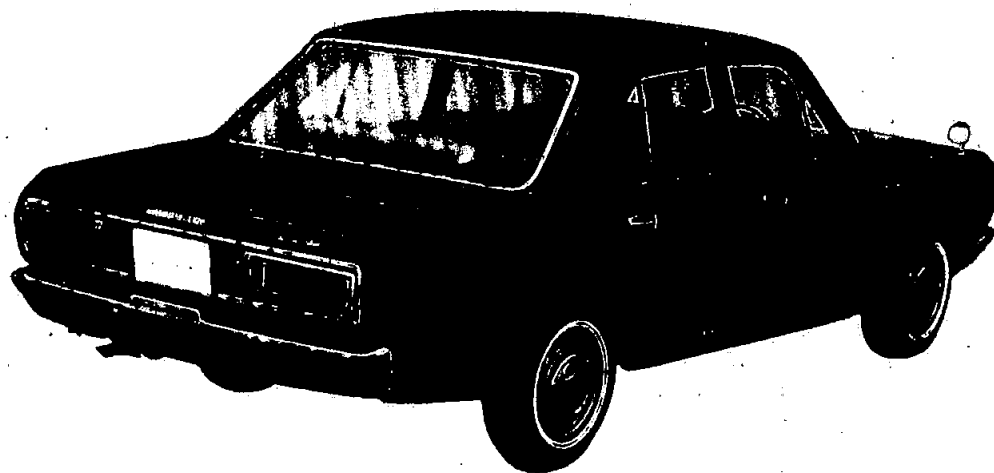
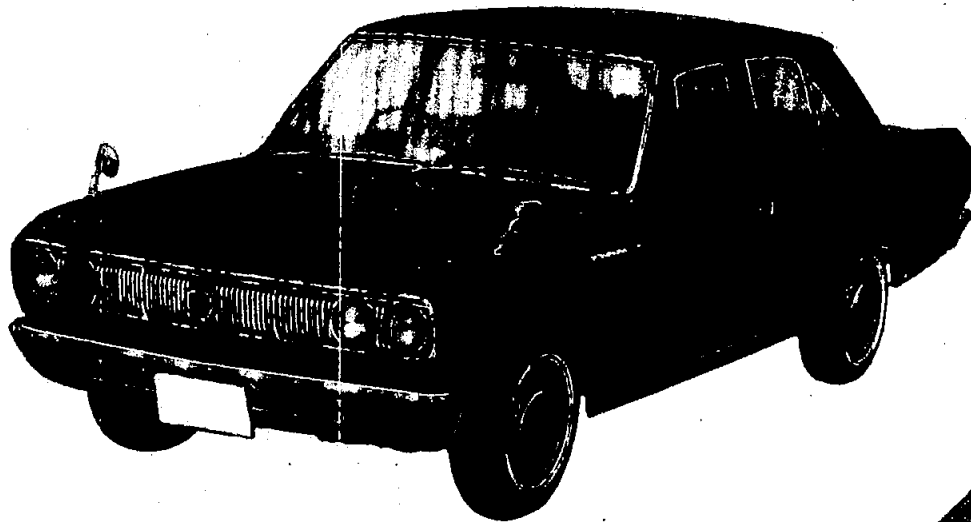
MODEL G(L)130-S

(from SEP-'68)

(from C/# G130-000011)

(from C/# GL130-000001)

B-C



DATSUN 2000 Personal Six

MODEL P(L)130-SU

(from SEP-'68)

(from C/ # P130-038001)

(from C/ # PL130-003601)

B-C

