

DATSUN 1600, 1400 & 1300

USA & CANADA

PARTS CATALOG

MODEL 510 SERIES

NISSAN MOTOR CO., LTD.

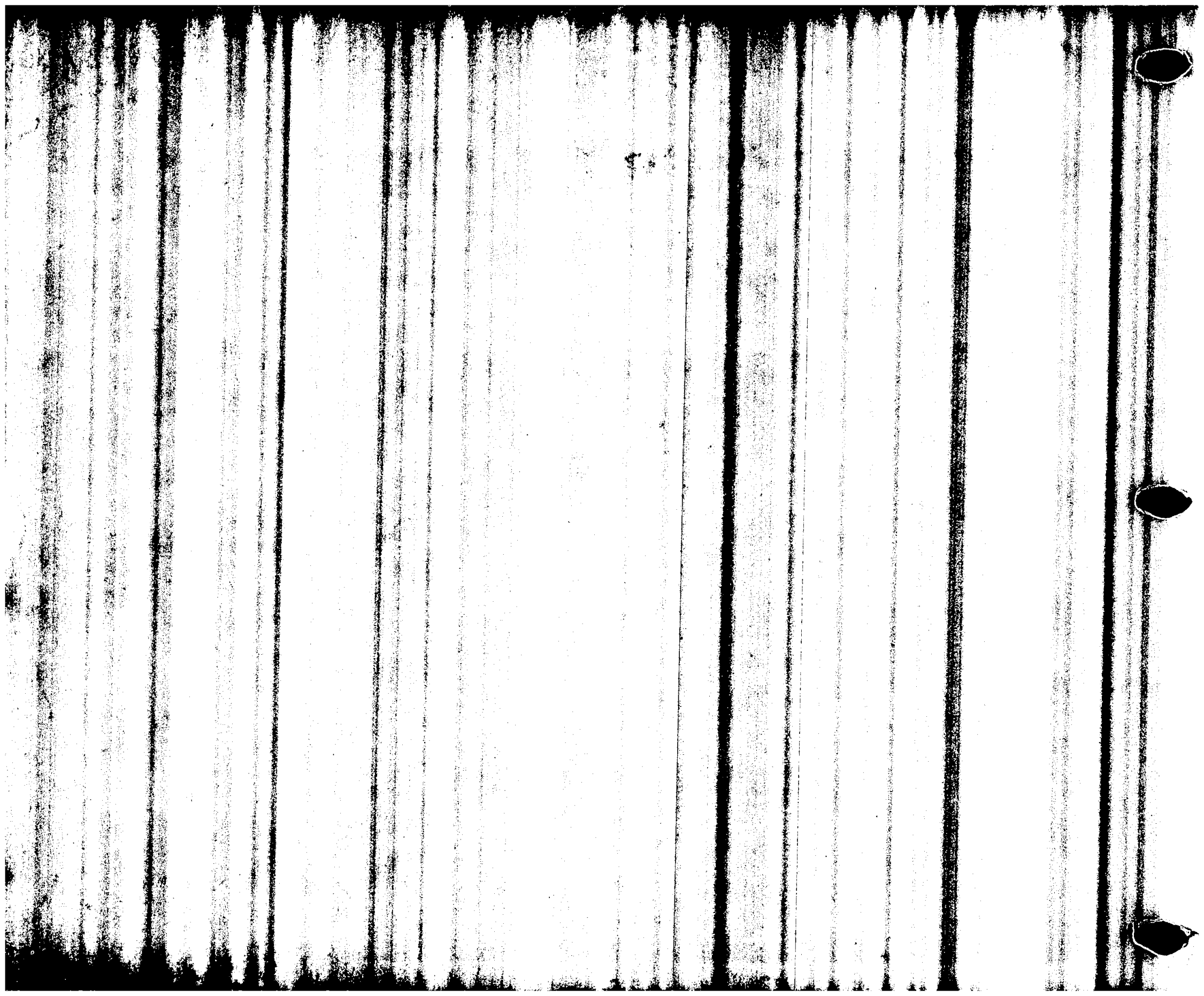
6-17-1 GINZA, CHUO-KU

TOKYO, JAPAN

Cable Address: "NISMO" TOKYO

Phones: (543) 5523

Pub. No. C-0040U



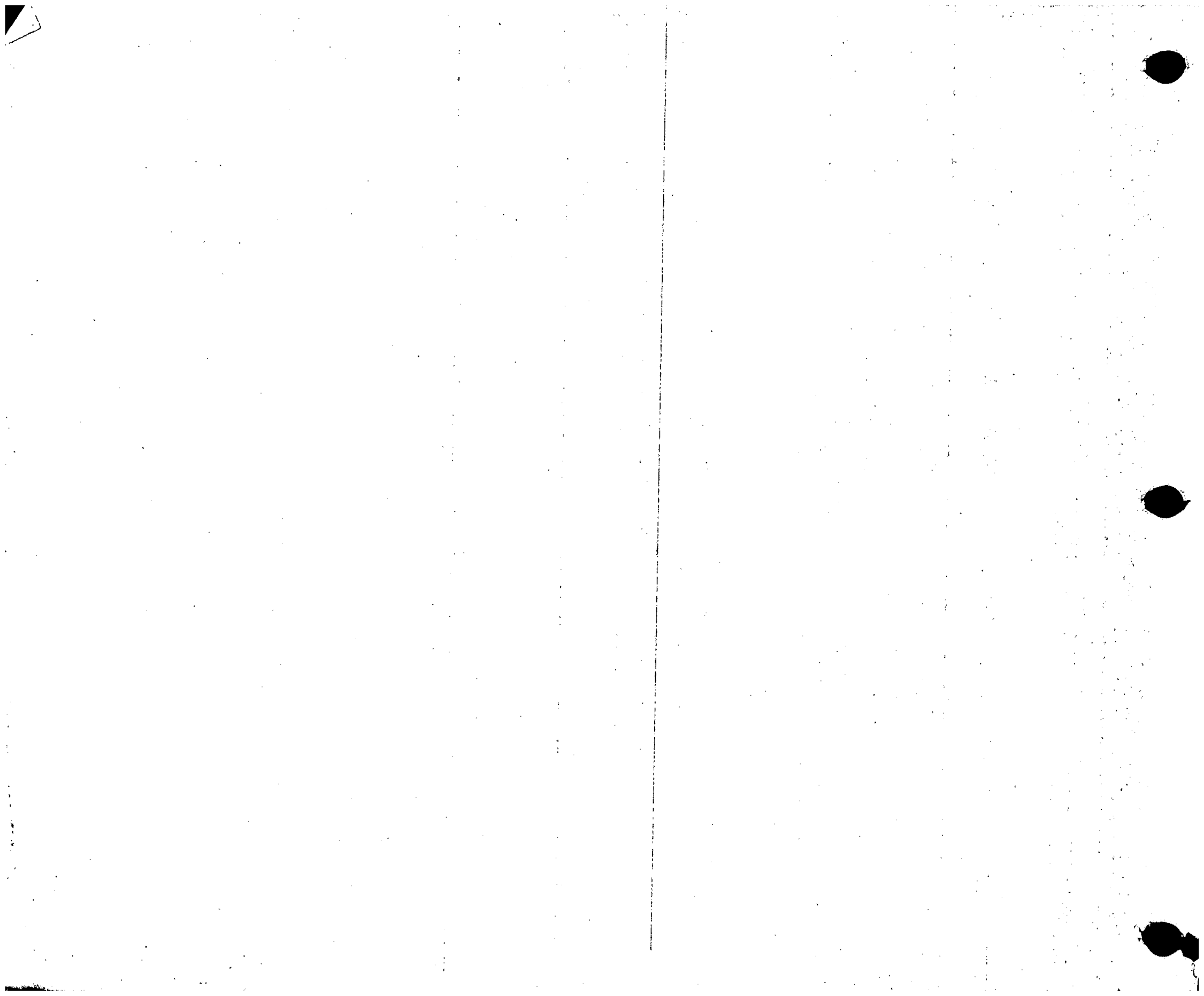
FIRST OVERALL REVISION SHEETS

FOR MODEL 510 PARTS CATALOG (C-0040U)

It is time for the whole parts catalog to be revised as follows.

- A. These first overall revision sheets carry all section from INTRODUCTION TO ALPHABETICAL INDEX.
- B. This time, replace the previous catalog sheets with these new sheets as a whole , not section by section.
- C. However, please keep alive the previous SEAT TRIM INSTRUCTION, since no substitute for it has been prepared.

DECEMBER 1, 1970
NISSAN MOTOR CO., LTD.
Export Spare Parts Department
Technical Coordinating Section



INTRODUCTION

INTRODUCTION

To bring better customer service and better spare parts supply, please note the following four points when referring to this Parts Catalog.

I. HOW TO USE THIS PARTS CATALOG

- A. The Publication Number of this Parts Catalog is C0040U. Whenever quoting the Parts Catalog, tell us this Pub. No..
- B. All spare parts available for MODEL 510 series are included here.
- C. Alphabetical Section Index and Illustration Index appears on page 32 and 35.
- D. Brief specifications of Model 510 series appear on page 2.
- E. Car Name and abbreviations in the applied model appear on page 6.
- F. The Car Numbers, the Engine Numbers in the Note column or the Dates in the Applied Date column indicate the application of the parts which were changed. The location of the car No. and the engine No. appears on page 10.
- G. Part Number Index is attached to the end of this Parts Catalog.
- H. Alphabetical Index is attached to the end of this Catalog.

II. HOW TO PLACE YOUR ORDERS FROM THE PARTS CATALOG (FOR DISTRIBUTOR USE ONLY)

- A. Typewrite the spare parts which you are going to order on the given Nissan Spare Parts Order Sheet.
- B. At least the Part Number and the Quantity must be filled in as accurately as possible. Otherwise our computer may reject your order.
- C. In the case that you can not find the Part No. which you are going to order we shall be very glad to take care of this problem after verifying its availability. Therefore, place your order on another order sheet as a

conditional order, which does not include an Ordinary order, telling us precisely the Part Name, the Place where it is attached and the Quantity if it is a colored thing or material, attach a sample.

III. HOW TO COMPARE THE CONFIRMATION LIST AND THE PARTS CATALOG (FOR DISTRIBUTOR USE ONLY)

Although all parts contained here are in principle available for supply, if you find some parts shown in the Parts Catalog sorted F/# U on the confirmation list where the availability of your ordered parts are classified by our computer in respect to our stock control system, kindly tell us the Parts Numbers, the Pub. No. of the Parts Catalog (C0040U), and the Page. We shall be glad to inform you of the availability by the revised confirmation list as soon as possible.

IV. HOW TO ADAPT TO OUR PART NUMBER SYSTEM

In our parts supply system, the Part Number plays a key role. Therefore, you may print only the part number and the quantity as long as they do not cause mutual misunderstandings.

For this reason, kindly become familiar with our Part Number System which appears on page 19.

BRIEF SPECIFICATIONS

INTRODUCTION

BRIEF SPECIFICATIONS

DIMENSIONS AND WEIGHT:

ITEM \ MODELS	(P)(L)510S(U)(T)	(P)(L)510(U)(T)(A)	P(L)510(U)TK	WP(L)510(U)(T)A	RPL510SUT
Overall length	4,070 mm (160.2 in)	4,120 mm (162.2 in)	4,120 mm (162.2 in)	4,145 mm (163.2 in)	4,070 mm (160.2 in)
Overall width	1,560 mm (61.4 in)	1,560 mm (61.4 in)	1,560 mm (61.4 in)	1,560 mm (61.4 in)	1,560 mm (61.4 in)
Overall height	1,420 mm (55.9 in)	1,420 mm (55.9 in)	1,420 mm (55.9 in)	1,435 mm (56.5 in)	1,420 mm (55.9 in)
Wheelbase	2,420 mm (95.3 in)	2,420 mm (95.3 in)	2,420 mm (95.3 in)	2,420 mm (95.3 in)	2,420 mm (95.3 in)
Tread front	1,270 mm (50.0 in)	1,270 mm (50.0 in)	1,270 mm (50.0 in)	1,275 mm (50.2 in)	1,270 mm (50.0 in)
Tread rear	1,270 mm (50.0 in)	1,270 mm (50.0 in)	1,270 mm (50.0 in)	1,260 mm (49.6 in)	1,270 mm (50.0 in)
Vehicle weight	880 kg (1,940 lb) [(L)510S(U)] 885 kg (1,951 lb) [P(L)510S(U)] 890 kg (1,962 lb) [P(L)510S(U)T]	905 kg (1,995 lb) [(L)510(U)] 910 kg (2,006 lb) [P(L)510(U)] 915 kg (2,017 lb) [P(L)510(U)T] 935 kg (2,061 lb) [P(L)510(U)A]	915 kg (2,017 lb) [P(L)510(U)TK]	940 kg (2,072 lb) [WP(L)510(U)] 945 kg (2,083 lb) [WP(L)510(U)T] 970 kg (2,138 lb) [WP(L)510(U)A]	925 kg (2,039 lb)
Seating capacity	5 persons	5 persons	5 persons	5 persons	5 persons
Min. road clearance	215 mm (8.5 in)	215 mm (8.5 in)	215 mm (8.5 in)	165 mm (6.5 in)	215 mm (8.5 in)

PERFORMANCE:

ITEM \ MODELS	(P)(L)510S(U)(T)	(P)(L)510(U)(T)(A)	P(L)510(U)TK	WP(L)510(U)(T)A	RPL510SUT
Min. turning circle	9.6 m (31.4 ft)	9.6 m (31.4 ft)	9.6 m (31.4 ft)	9.6 m (31.4 ft)	9.6 m (31.4 ft)
Grade ability (sin θ)	0.359 [(L)510S(U)] 0.400 [P(L)510S(U)] 0.425 [P(L)510S(U)T]	0.353 [(L)510(U)] 0.393 [P(L)510(U)] 0.418 [P(L)510(U)T]	0.425	0.430 [WP(L)510(U)T] 0.378 [WP(L)510(U)] 0.475 [WP(L)510(U)A]	0.421

Max. speed

510 series with L13 engine	P510 series with L16 engine	P510 with automatic transmission	P(L)510(U)TK
145 k.p.h. (90 m.p.h.)	160 k.p.h. (100 m.p.h.)	155 k.p.h. (96 m.p.h.)	165 k.p.h. (102 m.p.h.)

ENGINE:

Model Design	510 Series	P510 Series	P(L)510(U)TK(SSS)
	L13 4 cyl. in line 4 cycle O.H.C. Gasoline	L16 4 cyl. in line 4 cycle O.H.C. Gasoline	L16 4 cyl. in line 4 cycle O.H.C. Gasoline SU CARB.
Bore	83.0 mm (3.27 in)	83.0 mm (3.27 in)	83.0 mm (3.27 in)
Stroke	59.9 mm (2.36 in)	73.3 mm (2.90 in)	73.3 mm (2.90 in)
Displacement	1,296 cc (79.1 cu.in)	1,595 cc (97.3 cu.in)	1,595 cc (97.3 cu.in)
Max. BHP (SAE)	77 HP/6,000 rpm	96 HP/5,600 rpm	109 HP/6,000 rpm
Max. torque (SAE)	11.1 m-kp 80.2 ft-lb/3,600 rpm	13.8 m-kp 79.8 ft-lb/3,600 rpm	14.3 m-kp 103.4 ft-lb/4,000 rpm
Compression ratio	8.5 : 1	8.5 : 1	9.5 : 1

FUEL SYSTEM: "HITACHI" dual barrel down draft type carburetor (variable venturi side draft type carburetor for P(L)510(U)TK only); Mechanical type diaphragm pump; Paper element type air cleaner; Fuel tank capacity 45 ℓ (11.9 U.S.gal.).

LUBRICATION SYSTEM: Pressure feed with full-flow type oil filter; Trochoid type pump; Oil capacity 4.6 ℓ (1.22 U.S.gal.).

IGNITION SYSTEM: Coil and distributor with mechanical and vacuum control.

COOLING SYSTEM: Pressurized radiator with centrifugal pump; Pellet-type thermostat and fan; Cooling water capacity 6.4 ℓ (1.69 U.S.gal.).

ELECTRIC SYSTEM: 12 volt, 40 AH or 50 AH battery; 30 AH alternator with regulator; 33 AH alternator for USA & CANADA 1 KW (1.4 HP) magnetic shift starter (negative earth); 60 AH battery (optional).

TRANSMISSION: 3 or 4 forward speeds and 1 reverse; All synchromeshed on forward gears; 3-speed automatic transmission.

TYPE AND APPLICATION:

T/M type	3-speed	4-speed		Automatic
T/M control method	Remote control	Floor shift		Remote control (BW)
		Sedan	Wagon	
Gear ratio				
1st	3.263	3.382	3.657	2.39
2nd	1.645	2.013	2.177	1.45
3rd	1.000	1.312	1.149	1.00
4th	—	1.000	1.000	—
Rev.	3.355	3.364	3.638	2.09
Applied model	(L)510(S)(U) P(L)510S(U) (L)510U P(L)510(U) WP(L)510(U)	P(L)510S(U)T P(L)510(U)T P(L)510(U)TK PL510UT RPL510SUT	WP(L)510(U)T WPL510UT	P(L)510(U)A WP(L)510(U)A PL510UA WPL510UA

FINAL GEARS HYPOID:

Gear ratio		Applied model
3.889	America	WP(L)510(U), WP(L)510(U)T, WPL510UT, WP(L)510(U)A, WPL510UA
3.900		P(L)510S(U), P(L)510(U), P(L)510(U)A, P(L)510S(U)T, P(L)510(U)T, P(L)510(U)TK, PL510UT, RPL510SUT
3.700	Others	P(L)510S(U)T, P(L)510(U)T, PL510(U)TK, WP(L)510(U)T
3.889		WP(L)510(U), WP(L)510(U)A
3.900		P(L)510S(U), P(L)510(U), P(L)510(U)A
4.375		(L)510S(U), L510(U)

CLUTCH: Single, dry disc with cushioning springs (510 series with L13 engine); Single, dry disc with diaphragm spring (P510 series with L16 engine); Diameter 200 mm (7.87 in).

FRONT SUSPENSION: Independent strut type with tension rod and stabilizer.

REAR SUSPENSION: Fully independent semi-trailing arm with coil springs and telescopic double acting shock absorbers.

STEERING: Right or left hand drive; Recirculating ball type gear; Ratio 15.0 : 1.

BRAKES: Hydraulic; Front two-leading shoe; Rear leading and trailing shoe; Brake drum dia. 228.6 mm (9.0 in); Parking brake mechanically operated on rear wheels only; Front disc brake [standard for P(L)510(U)TK, optional for other models].

WHEELS AND TIRES: Steel disc wheels; 5.60-13-4 PR tires.

LAMPS: Two dual head lights (sealed beam) with dipping; Two parking and turn signal lights; Two combined stop, tail and turn signal lights; Room light; Rear license light; Back-up lights; Side directional lights.

INSTRUMENTS: Speedometer; Fuel gauge; Water temperature gauge; Oil pressure warning light; Turn signal pilot lights; Main beam warning light; Parking brake warning light; On instrument panel, ignition and starter switch, lighting switch, choke control knob, windshield wiper switch, Four-way flasher switch (U.S.A. only), fresh air control levers and glove box.

BODY WORKS: Four-door sedan; Four-door station wagon; Five-seater with adjustable front seats; All steel body full upholstered with vinyl leather; Dual self-parking windshield wiper; Room light door switches on both sides; Turn signal lever with dimmer switch unit; Interior back mirror; Safety glass on all windows and doors; Two sunvisors; Ash trays, front and rear; Vinyl floor mat; Safety belt anchorages (front: 3 point, rear: lap); Fuel tank filler cap lock; Trunk floor mat; Moulding sill, Rear door pull handle; Full flow ventilator. Full height single lift gate; Vinyl mat on luggage floor, Rear-gate lock (for Wagon).

EQUIPMENT APPLICATIONS:

Item	Standard	Deluxe	Wagon
Bumper over rider	opt	o	o
Drip channel moulding	x	o	o
Anti-sun glass	opt	opt	opt
White tire	opt	o	o
Large wheel cap	opt	o	o
Front door pull handle	o	x	x
Front arm rest	x	o	o
Rear arm rest	x	o	o
Package tray	x	o	o
Glove box lid lock	x	o	o
Spare wheel cover	opt	o	x
Trunk room mat	opt	o	o
Engine compartment light	x	o	o
Windshield washer	opt	o	o
Cigarette lighter	opt	o	o
Clock	opt	opt	opt

O Standard equipment

X Not available

Opt Option

OPTIONAL PARTS FOR ALL MODELS: Outside back mirror (on fender or door); Tubeless tire; Heater; Radio; Cooler; Steering lock; Passing light (only left-hand drive); Anti wind-lift type wiper blades; 60 AH battery (N50Z) for frigid zone; Carpet.

These specifications are subject to change without notice.

EXPLANATION OF EACH COLUMN

PART CATALOG:

1. 'S' column (preceding the KEY No. column)
(DISTRIBUTOR USE ONLY)
 - * Signifies that the part No. has been removed.
If the part No. A is preceded by "*", the part No. A appears in the SUPERSEDED column of the part No. B.
In this case the part No. B is the superseding part of the part No. A.
 - # The parts preceded by "#" are conditional order items. Place the order as specified in the Nissan Parts S.O.P.

2. KEY NO. column

A KEY NO. consists of 5 digits.
The first 3 digits play the role of connecting the part No. to the part in the Illustration.
When the first 3 digits are blank, it means the same as above. The last 2 digits are merely suffix to show the sequence.
The KEY NOS. may be changed at each revision.

3. PART NO. column

PART NO. is as a rule ten digits.
However, 12-digit PART NO. may rarely appear.
Moreover PART NO. column shows level of the component parts as below;

PART NO.	PART NAME
.....	ASSEMBLY
-	SUBASSEMBLY-A
-	COMPONENT-A
-	COMPONENT-B
-	COMPONENT-C
-	SUBASSEMBLY-B

- ASSEMBLY includes SUBASSEMBLY-A and SUBASSEMBLY-B.
SUBASSEMBLY-A includes COMPONENT-A.
COMPONENT-A includes COMPONENT-B and COMPONENT-C.

4. DESCRIPTION column

Part name is shown in this column.
"INC" is the abbreviation of "including".

5. QTY column

The quantity in this column shows the pieces of the part used in the section.
"AR" is the abbreviation of "as required".

6. UNIT PKG column (DISTRIBUTOR USE ONLY)

UNIT PKG column indicates the pieces which are contained in a packing box.
Place the order for a part multiplying its unit package (ex. UNIT PKG 10-make your order by 10, 20, 30, -----).
Then you will receive the part in a form easily to be stored into the bin.

7. APPLIED MODEL column

Applied model is described in this column.

8. APPLIED DATE column

In case of the annual model change, the applied date is used as the abbreviation instead of the actual Car No. or Engine No..
The APPLIED DATE column signifies this applied date. For example, from "1969" stands for 1970 year model and you can find the actual Car No. by referring to the "Car No. and Engine No." section in the introduction.
On those pages, the applied date and actual Car Nos. are described together with picture of the annual model.
If "NOTE" appears in the APPLIED DATE column, see NOTE column at the foot of the page.
You can find the actual Car No. or Engine No. there.

9. ICA column

ICA is the abbreviation of Interchangeability.

9-1 N column

The code in the N column signifies whether the part in the PART NO. column is substitutive for the part in the SUPERSEDED column or not.

9-2 F column

The code in the F column signifies whether the part in the SUPERSEDED column is substitutive for the part in the PART NO. column or not.

"Y" is abbreviation of Yes (i.e. Substitutive)

"N" is the abbreviation of No (i.e. Not Substitutive)

"C" is the abbreviation of Condition (i.e. Substitutive with condition)

In the case of "C", the details of the condition are described in the NOTE column or ILLUSTRATION.

10. SUPERSEDED column

This column signifies the superseded part no. of the part in the PART NO. column.

11. CAR NAME AND ABBREVIATIONS IN THE APPLIED MODEL

The car name and abbreviations used in the applied model column are as follows. These car name are taken by each model type, equipment (i.e. Deluxe and Standard), the position of steering wheel, the transmission system, the displacement of the engine, sedan or wagon and the destinations.

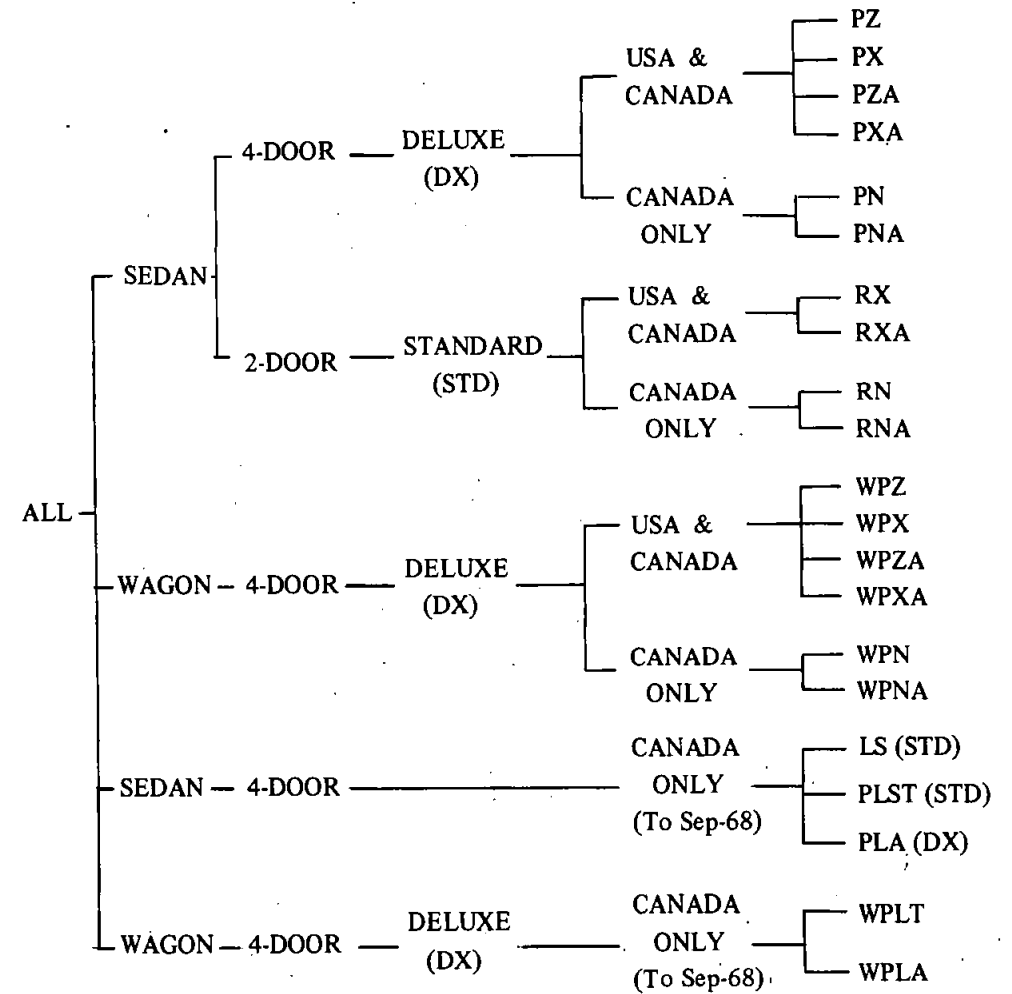
MODEL SYMBOLS AND ABBREVIATIONS:

Car name			Model	Symbol	Style	Transmission		
SEDAN	L16	DX	PL510-UTZ	PZ	SEDAN 4-DOOR	4-SPEED Floor Shift		
			PL510-NT	PN (CANADA)				
			PL510-UT	PX				
			PL510-UAZ	PZA				
			PL510-NA	PNA (CANADA)				
		PL510-UA	PXA	SEDAN 4-DOOR	Automatic			
		STD	RPL510-SNT	RN (CANADA)	SEDAN 2-DOOR	4-SPEED Floor Shift		
			RPL510-SUT	RX	SEDAN 2-DOOR	Automatic		
			RPL510-SAN	RNA (CANADA)				
			RPL510-SAU	RXA				
WAGON	L16	DX	WPL510-UTZ	WPZ			WAGON 4-DOOR	4-SPEED Floor Shift
			WPL510-NT	WPN (CANADA)				
			WPL510-UT	WPX				
			WPL510-UAZ	WPZA				
			WPL510-NA	WPNA (CANADA)	WAGON 4-DOOR	Automatic		
			WPL510-UA	WPXA				

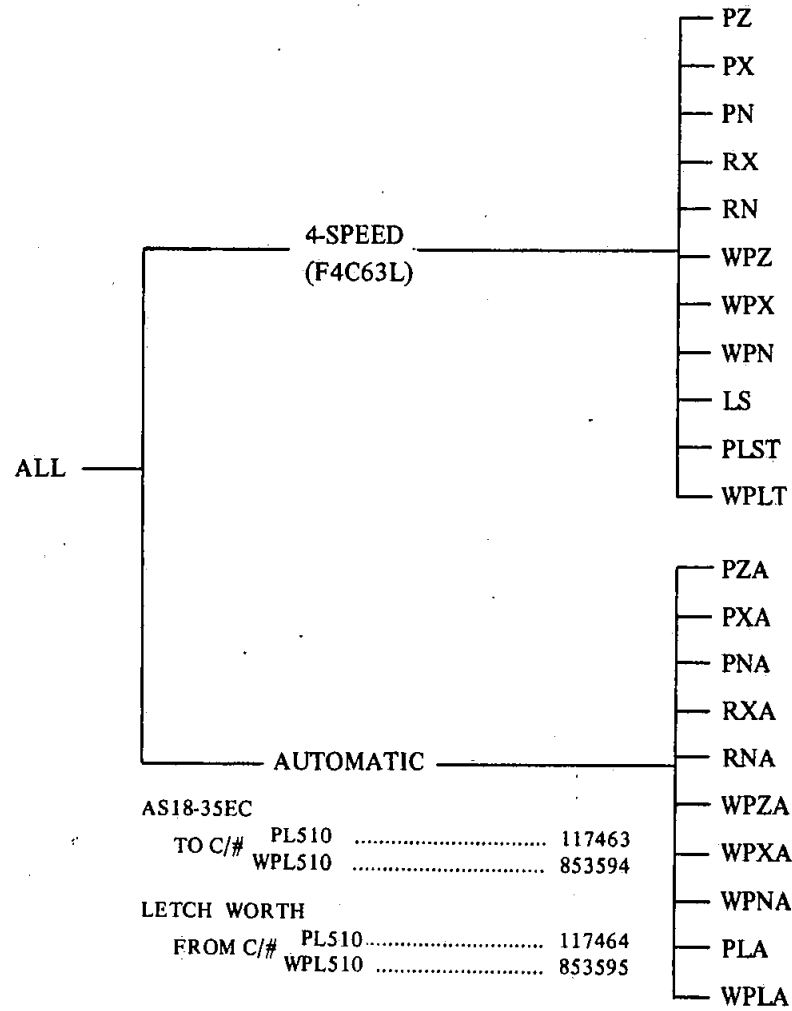
FOR CANADA ONLY (TO SEP-68)

Car name			Model	Symbol	Style	Transmission
SEDAN	L13	STD	L510-S	LS	SEDAN 4-DOOR	3-SPEED Remote Control
			PL510-ST	PLST	SEDAN 4-DOOR	4-SPEED Floor Shift
	L16	DX	PL510-A	PLA	SEDAN 4-DOOR	Automatic
WAGON	L16	DX	WPL510-T	WPLT	WAGON 4-DOOR	4-SPEED Floor Shift
			WPL510-A	WPLA	WAGON 4-DOOR	Automatic

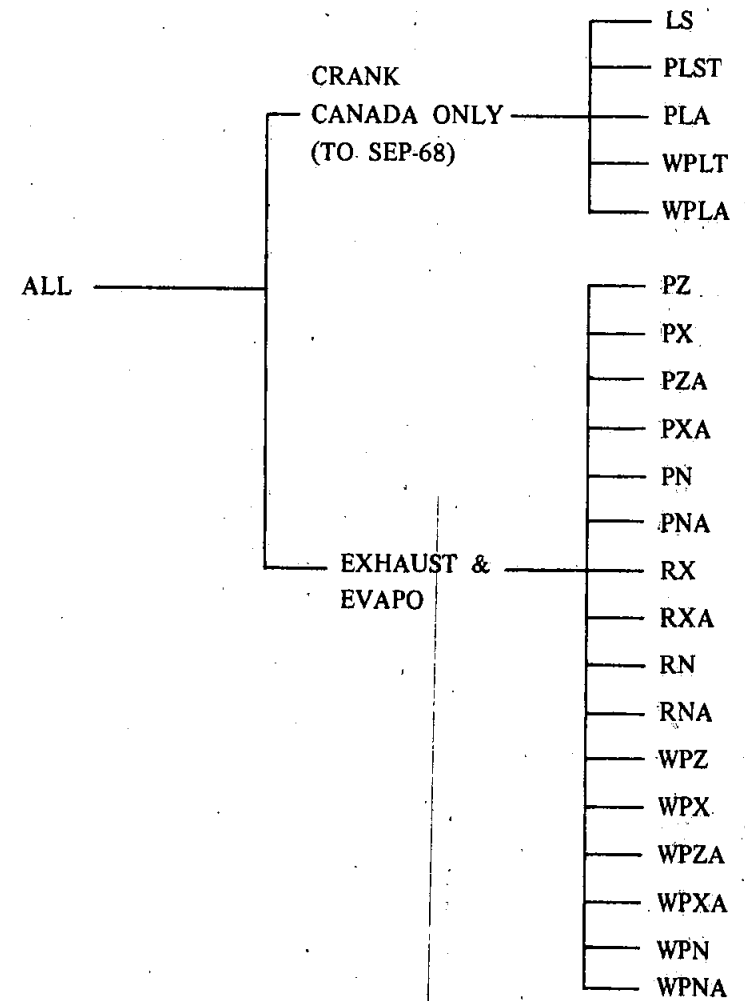
Style Group



Transmission Group



Emission Control Group

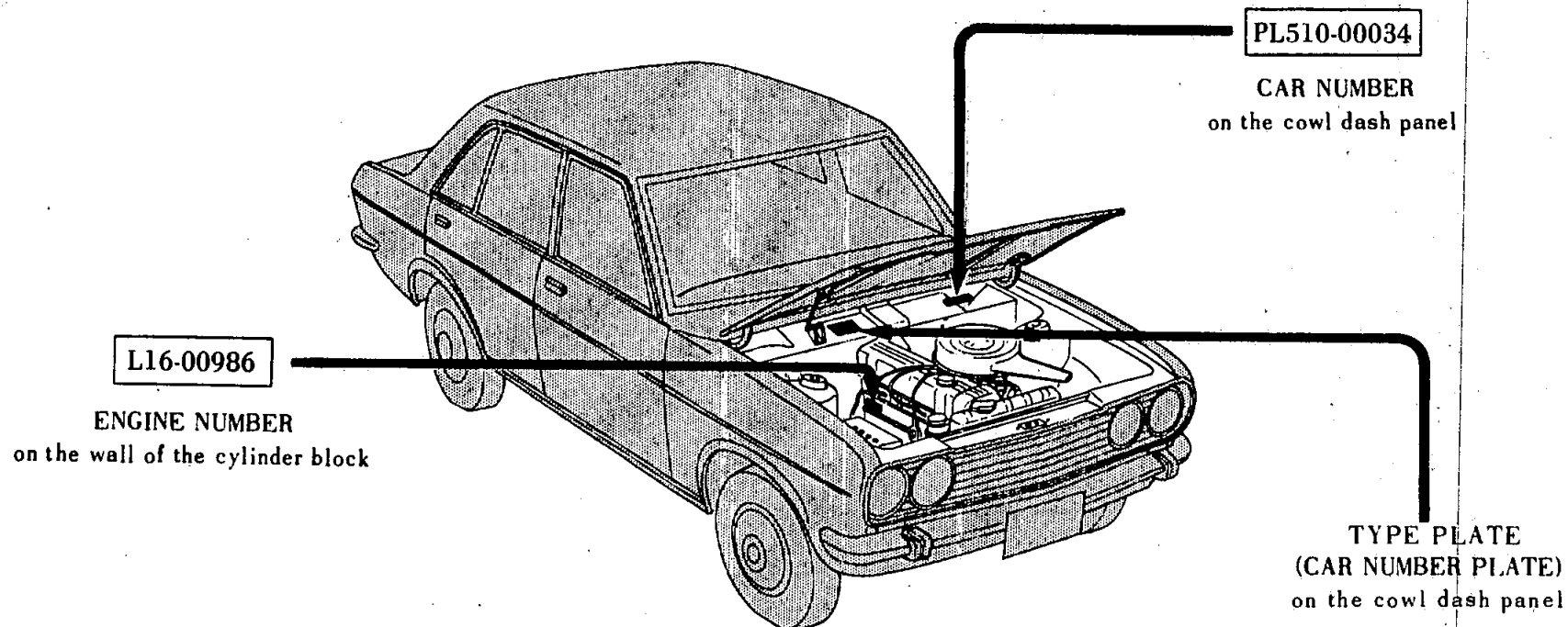


GROUP SYMBOLS

SEDAN	The part is used on all 510 Sedans.	EVAPO	The part is used on 510 model equipped with L16 engine with evaporative emission control devices (including exhaust and crankcase emission control devices) for California only.
WAGON	The part is used on all 510 Wagons.	EXHAUST	The part is used on 510 model equipped with L16 engine with exhaust emission control devices (including crankcase emission control devices) for Ontario and USA except California.
3-SPEED	The part is used on 510 model with a 3-speed manual transmission.	USA-S	The part is used on 510 model for the U.S.A. with both emission control devices and safety devices.
4-SPEED	The part is used on 510 model with a 4-speed manual transmission.	USA	The part is used on 510 model for U.S.A. (including EVAPO, EXHAUST and USA-S)
AUTOMATIC (or AUTO) ..	The part is used on 510 model with an automatic transmission.	AMERICA	The part is used on all 510 for NORTH AMERICA and SOUTH AMERICA.
L13	The part is used on 510 model with a 1,296 cc (79.1 cu.in.) engine.	OP	Optionally equipped.
L16	The part is used on 510 model with a 1,595 cc (97.3 cu.in.) engine.	ONLY	ONLY is used together with the destination. For example, USA ONLY means that the part is exclusively used for Australia.
CANADA	The part is used on 510 model for CANADA from 1969 model with safety devices.	EXC	Except.
CRANK	The part is used on 510 model equipped with L16 engine with crankcase emission control devices for every destination except USA (including California) and Ontario.	INC	Including.
4-DOOR	The part is used on all 510 4-DOOR Sedan and Wagon.		
2-DOOR	The part is used on all 510 2-DOOR Sedan.		

CAR NO. AND ENGINE NO.

To choose the right parts, always refer to the Car Nos. or Engine Nos., which are located in the engine room (see below).



TYPE PLATE
(CAR NUMBER PLATE)
on the cowl dash panel

DATSUN		TYPE PL 510
ENGINE CAPACITY	1595 cc	
MAX HP at RPM	96 HP at 5600 rpm (NEWSAE)	
WHEEL BASE	2420 mm	
ENGINE NO.	L16-00986	
CAR NO.	PL510-00034	
NISSAN MOTOR CO., LTD.		
YOKOHAMA JAPAN		

DATSUN SEDAN

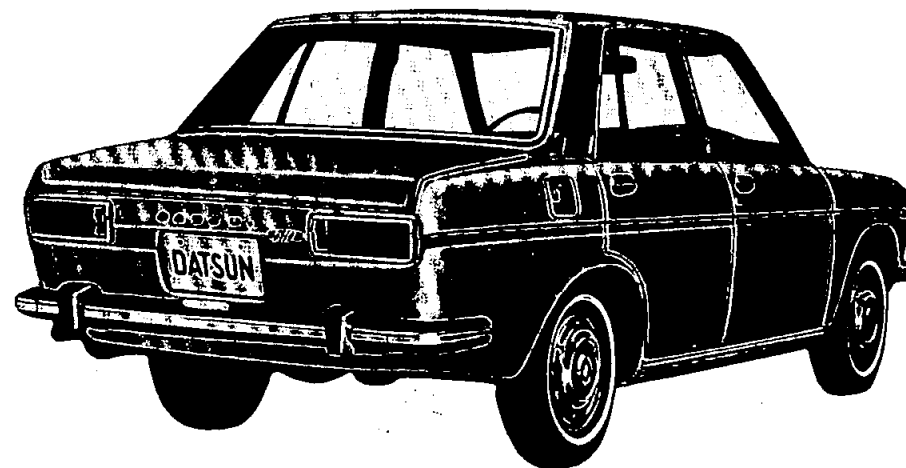
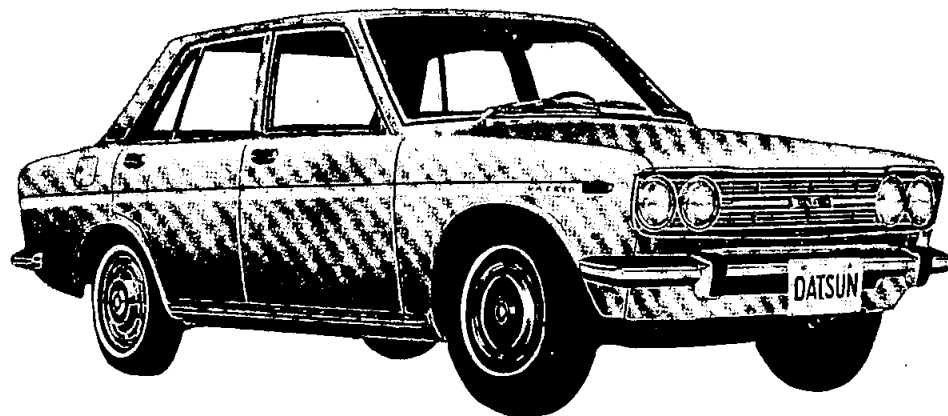
('68 YEAR MODEL)

From C/ # L510 000011 (FROM OCT-'67)

PL510 000011

To C/ # L510 009999 (TO SEP.-'68)

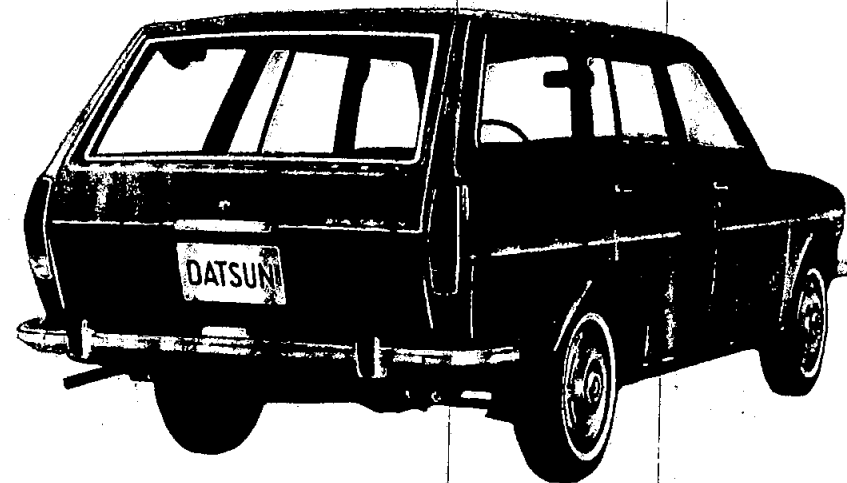
PL510 040010



DATSUN WAGON

('68 YEAR MODEL)

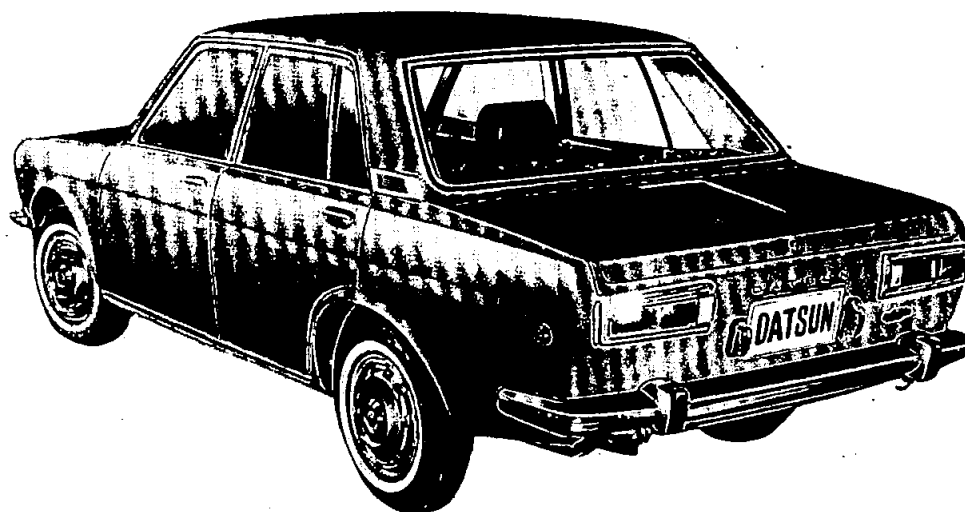
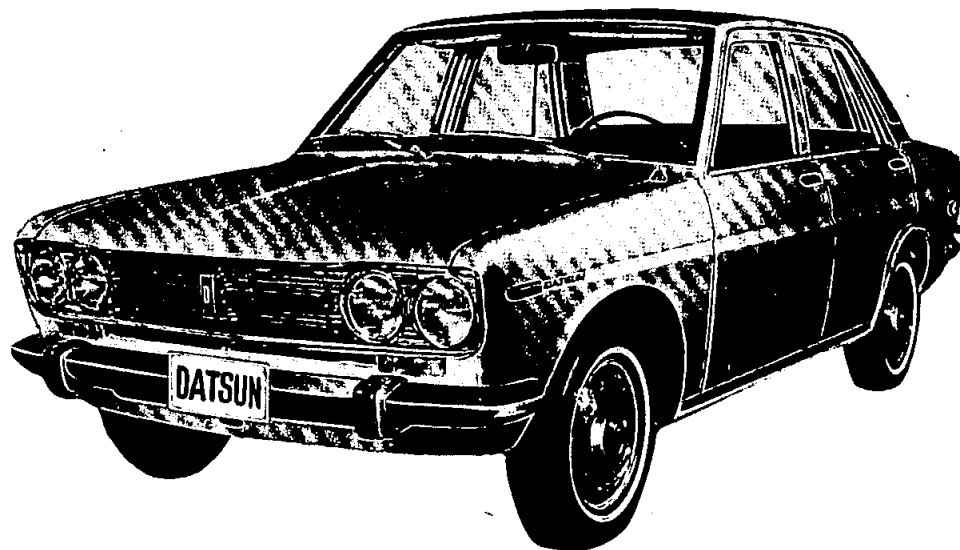
From C/ # WPL510 800001 (FROM OCT-'67)
TO C/ # WPL510 820000 (TO SEP-'68)



DATSUN SEDAN

('69 YEAR MODEL)

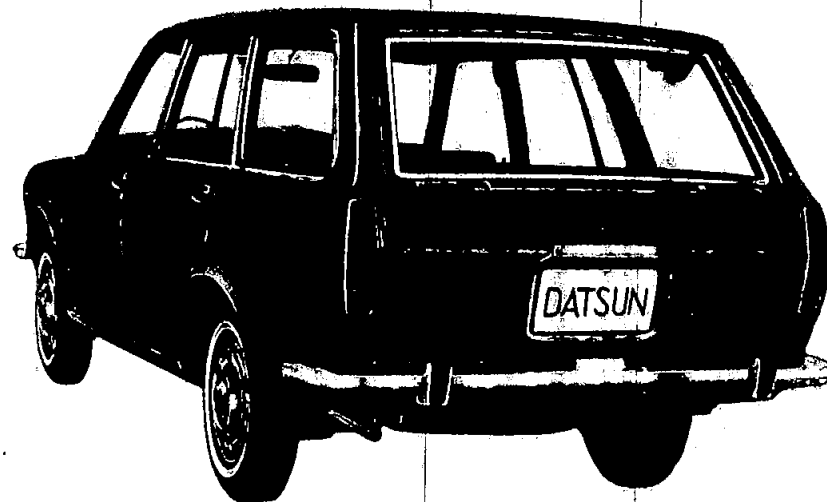
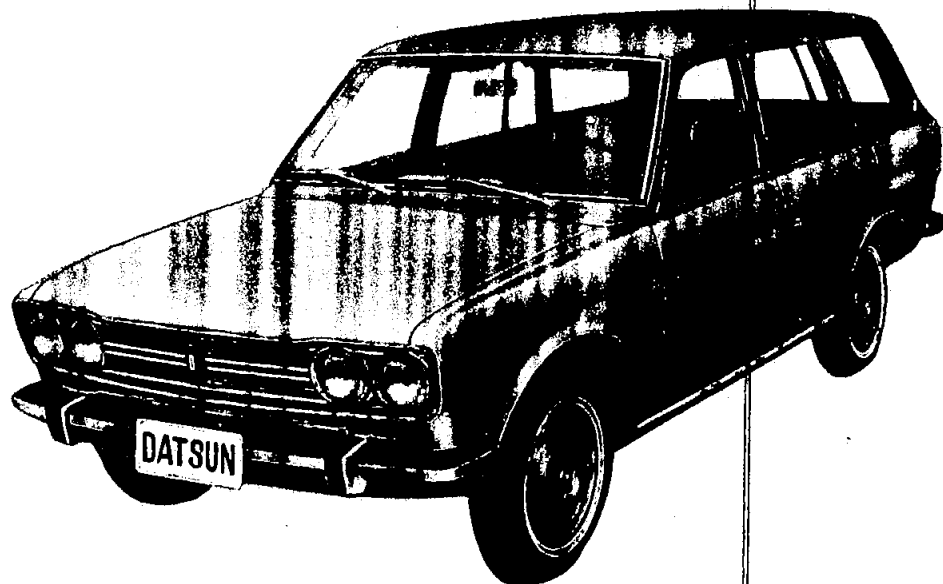
From C/ # L510 010000 (FROM OCT-'68)
PL510 040011



DATSUN WAGON

('69 YEAR MODEL)

From C/ # WPL510 820001 (FROM OCT-'68)



DATSUN SEDAN

('70 YEAR MODEL)

From C/ # L510 040000 (FROM OCT-'69)
PL510 095000-11499 (FROM JULY-'69)

