

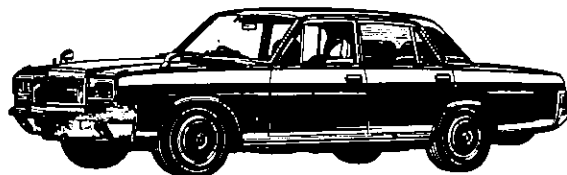


# PARTS CATALOG

# MODEL 250 SERIES

R/L - DRIVE

APR. 1986 ISSUE



Pub. No. EC-034

*Install the best!*  
**GENUINE NISSAN PARTS**

**R/L - D R I V E**

# PARTS CATALOG

**MODEL 250 SERIES**



**NISSAN MOTOR CO., LTD.**

Parts Division  
Engineering Department

17-1, GINZA 6-CHOME, CHUO-KU  
TOKYO, JAPAN 104  
Telex: NISMO J22503  
Cable Address: NISMO TOKYO

**Pub. NO. EC-034**

FIRST EDITION : DECEMBER 1982  
\*SECOND EDITION: APRIL 1986

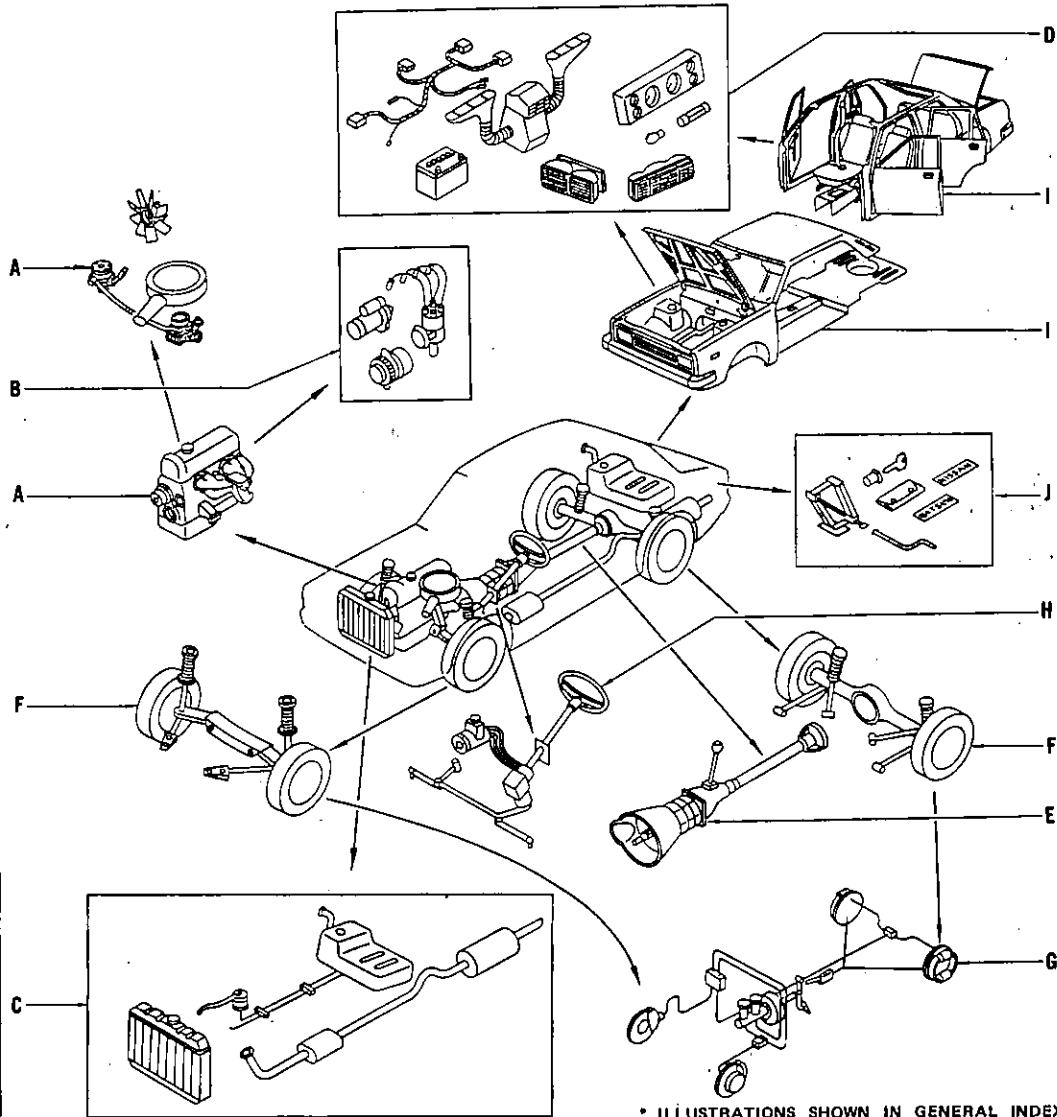
THIS SPARE PARTS CATALOG INCLUDES PART NUMBERS APPLIED TO VEHICLES WHICH HAS BEEN PRODUCED SINCE DECEMBER, 1982. AS FOR VEHICLES WHICH WERE PRODUCED BEFORE DECEMBER 1982, PLEASE REFER TO THE 1981 JANUARY ISSUE OF SPARE PARTS CATALOG.

PRODUCTION DATE	VEHICLE SPECIFICATION	CHASSIS NUMBER
BEFORE DEC. 1982	RIGHT HAND DRIVE	UP TO H250-009199
	LEFT HAND DRIVE	UP TO HL250-000184
AFTER DEC. 1982	RIGHT HAND DRIVE	FROM H250-009200
	LEFT HAND DRIVE	FROM HL250-00185

© 1986 NISSAN MOTOR CO., LTD.

*All Rights Reserved. No part of this publication may be reproduced in any form without the prior written permission of the publisher.*

# GENERAL INDEX



	INTRODUCTION
A	ENGINE (Y44S)
B	ENGINE ELECTRICAL
C	ENGINE FITTING
D	BODY ELECTRICAL
E	POWER TRAIN
F	AXLE & SUSPENSION
G	BRAKE
H	STEERING
I	BODY
J	MISCELLANEOUS
	ALPHA PART NAME INDEX
	PART NO. INDEX

\* ILLUSTRATIONS SHOWN IN GENERAL INDEX AND GROUP INDEX ARE GENERALIZED DESCRIPTIONS FOR ALL MODELS AND ARE NOT PRECISE IN ALL DETAILS.

# CONTENTS

INTRODUCTION	Page
GENERAL SPECIFICATIONS .....	E1
GROUP SYMBOLS AND ABBREVIATIONS .....	E3
CAR NUMBER AND ENGINE NUMBER .....	E4
MODEL PHOTOGRAPH .....	E5
SECTION INDEX .....	E6

TEXT	Section No.
ENGINE (Y44S) .....	101 - 113
ENGINE ELECTRICAL .....	116 - 119B
ENGINE FITTING .....	121 - 126B
BODY ELECTRICAL .....	129 - 152
POWER TRAIN .....	155 - 163
AXLE & SUSPENSION .....	166 - 170
BRAKE .....	172A - 178
STEERING .....	181 - 186
BODY .....	188 - 229
MISCELLANEOUS .....	230 - 234

	Page
ALPHABETICAL PART NAME INDEX .....	1 - 8
PART NUMBER INDEX .....	1 - 23

## GENERAL SPECIFICATIONS

### DIMENSIONS AND SEATING CAPACITY:

ITEM	MODEL	R-DRIVE			L-DRIVE		
		SOVEREIGN		D-SPEC.	SOVEREIGN		D-SPEC.
		H-JXU	H-DWU	H-DU	HL-XJ	HL-DW	
Overall length	mm (in)	5280 (207.9)					
Overall width	mm (in)	1830 ( 72.0)					
Overall height	mm (in)	1490 ( 58.7)					
Wheelbase	mm (in)	2850 (112.2)					
Tread	Front	1520 (59.8)					
	Rear	1500 (59.0)					
Seating Capacity	Persons	5	5	6	5	5	

### ENGINE

ENGINE SPECIFICATION	
Type	Y44-S
No. of cylinders and arrangement	90° V-8
Cycle and valve arrangement	4-Cycle, OHV
Bore	mm (in)
Stroke	mm (in)
Displacement	cc (cu. in)
FUEL SYSTEM	
Classification	Gasoline
Fuel device	Dual two-barrel down-draft carburetor.
Fuel pump type	Mechanical & Electrical
Fuel tank capacity	R (U.S. gal)
LUBRICATION SYSTEM	
Lubrication method	Full-flow
Oil filter type	Cartridge
Oil pump type	Trochoid
ELECTRIC SYSTEM	
Voltage	12 Volt negative ground
Applied Model	H-XJU, H-DWU, H-DU, HL-XJ, HL-DW

**POWER TRAIN**

TRANSMISSION			
Type	3N71B, AUTOMATIC		
Shift lever position	Column		
Gear ratio	1st	2.458	
	2nd	1.458	
	3rd	1.000	
	Rev.	2.182	
FINAL GEAR			
Model	C200		
Type	Hypoid gear		
Gear ratio	3.364		
PROPELLER SHAFT			
Type	80H, 3-Joint		

**CHASSIS**

SUSPENSION		
Type	Front	Independent, double wishborn and coil springs
	Rear	Rigid axle, 4 links with coil springs
STEERING		
Gear type	Power steering	
ROAD WHEEL		
Wheel size	5J x 14	
BRAKE		
Type	Front	Disc (CL28V)
	Rear	Drum, leading and trailing shoes
Parking brake type	Mechanically operated on rear wheel	
APPLIED MODEL	H-XJU, H-DWU, H-DU, HL-XJ, HL-DW	

## GROUP SYMBOLS AND ABBREVIATIONS

### DEFINITION OF GROUP SYMBOLS IN APPLIED MODEL COLUMN:

- ALL . . . . . The part is used on all type of NISSAN PRESIDENT.
- R-DRIVE . . . The part is used on all right hand drive NISSAN PRESIDENT.
- L-DRIVE . . . The part is used on all left hand drive NISSAN PRESIDENT.
- SOV. . . . . SOVEREIGN MODEL
- D . . . . . D-Spec.
- DUAL . . . . DUAL TYPE FRONT SEAT
- MAN . . . . . SEPARATE TYPE FRONT SEAT (MANUAL SPEC.)
- EXC. . . . . Except
- OP. . . . . Optional equipment

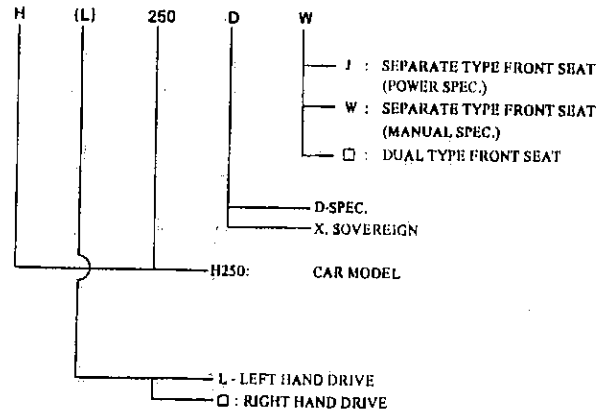
### SIGNS AND SYMBOLS USED TO REPRESENT A COMBINATION OF MODELS:

- ( ) . . . . . SUPPLEMENT EXPLANATION OF THE MODELS
- > . . . . . ADDITIONAL EXPLANATION
- SYMBOL    THE ITEM
- \* . . . . . Not for sale
- # . . . . . Mark item should be placed on conditional order.

### CLASSIFICATIONS OF MODELS:

GROUP SYMBOL	ENGINE	STYLE			VARIATION		
		R-DRIVE	L-DRIVE	SEDAN	SOVEREIGN	D-SPEC DUAL	D-SPEC MAN
MODEL	Y44-S						
H250-XJU	o	o		o	o		
H250-DU	o	o		o		o	
H250-DWU	o	o		o			o
HL250-XJ	o		o	o	o		
HL250-DW	o		o	o			o

### MODEL IDENTIFICATIONS:

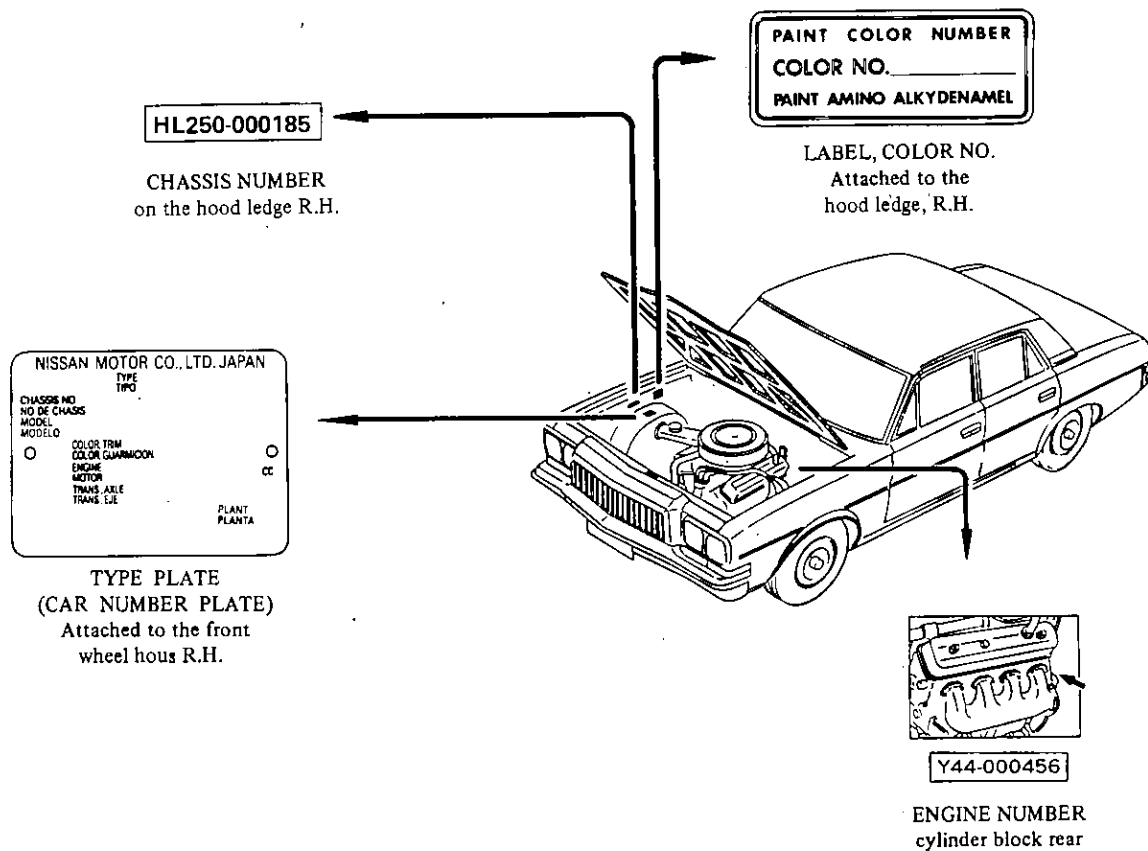


NOTE: □ Means no indication.



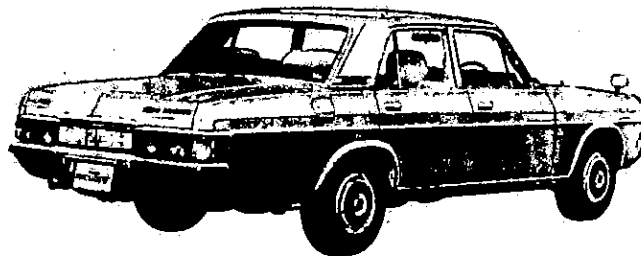
## CAR NUMBER AND ENGINE NUMBER

To choose the right parts, always refer to the Car Nos. or Engine Nos., which are located in the engine room (see below).



# NISSAN PRESIDENT

MODEL H(L)250D(X)W(J)(U)



This photo is for the Model H250XJU

## SECTION INDEX

### ENGINE (Y44-S)

SECTION NAME	SECTION NO.
ENGINE ASSEMBLY .....	101
ENGINE GASKET KIT .....	102
CYLINDER BLOCK & OIL PAN .....	103
CYLINDER HEAD & ROCKER COVER .....	104
CRANKSHAFT, PISTON & CONNECTING ROD .....	105
CRANKSHAFT & VALVE MECHANISM .....	106
MANIFOLD .....	107
OIL PUMP .....	108
CARBURETOR .....	109
CARBURETOR (FROM FEB. '84) .....	109A
AIR CLEANER .....	110
FUEL PUMP .....	111
ELECTRICAL PUMP .....	111A
WATER PUMP .....	112
EGR & EVAP. SYSTEM .....	113

### ENGINE ELECTRICAL

SECTION NAME	SECTION NO.
DISTRIBUTOR .....	116
ELECTRICAL FITTING .....	117
ALTERNATOR .....	118
STARTER MOTOR (R-DRIVE) .....	119
STARTER MOTOR (L-DRIVE) .....	119A
STARTER MOTOR (ALL) (FROM SEP. '85) .....	119B

### ENGINE FITTING

SECTION NAME	SECTION NO.
FUEL TANK .....	121
FUEL PIPE & STRAINER .....	122
RADIATOR .....	123
EXHAUST TUBE & MUFFLER .....	124
ENGINE MOUNTING .....	125
ACCELERATOR LINKAGE (R-DRIVE) .....	126A
ACCELERATOR LINKAGE (L-DRIVE) .....	126B

### BODY ELECTRICAL

SECTION NAME	SECTION NO.
WIRING (ENGINE & INSTRUMENT) .....	129
WIRING (BODY) .....	130
ELECTRICAL UNIT I (R-DRIVE) .....	131A
ELECTRICAL UNIT I (L-DRIVE) .....	131B
ELECTRICAL UNIT II .....	131C
METER (R-DRIVE) .....	132A
METER (L-DRIVE) .....	132B
CLOCK .....	132C
RADIO .....	133
POWER WINDOW & SEAT SWITCH PARTS (R-DRIVE) .....	134A
POWER WINDOW & SEAT SWITCH PARTS (L-DRIVE) .....	134B
BATTERY & BATTERY MOUNTING .....	135
WINDSHIELD WIPER (R-DRIVE) .....	136

SECTION NAME	SECTION NO.
WINDSHIELD WIPER (L-DRIVE) .....	136A
WINDSHIELD WASHER .....	137
HEAD LAMP .....	138
FRONT COMBINATION LAMP .....	139
REAR COMBINATION LAMP .....	140
LICENCE & REVERSE LAMP .....	141
ROOM LAMP, PERSONAL LAMP & LAMP MONITOR .....	142
INSPECTION, FOOT, GLOVE-BOX & TRUNK LAMP .....	142A
FOG LAMP .....	143
ROOM HEATER (R-DRIVE) .....	144A
ROOM HEATER (L-DRIVE) .....	144B
AIR CONDITIONER ENGINE SIDE (R-DRIVE) .....	145A
AIR CONDITIONER ENGINE SIDE (L-DRIVE) .....	145B
AIR-CON. CONTROL PARTS (R-DRIVE) .....	146A
AIR-CON. CONTROL PARTS (L-DRIVE) .....	146B
DUCT & NOZZLE PARTS (R-DRIVE) .....	147A
DUCT & NOZZLE PARTS (L-DRIVE) .....	147B
FLOOR & TRUNK PIPING (R-DRIVE) .....	148
FLOOR & TRUNK PIPING (L-DRIVE) .....	148A
COOLING UNIT, FRONT (R-DRIVE) .....	149
COOLING UNIT, FRONT (L-DRIVE) .....	149A
COOLING UNIT, REAR .....	150
REAR HEATER .....	151
AIR PURIFIER .....	152

### POWER TRAIN

SECTION NAME	SECTION NO.
TRANSMISSION ASSEMBLY (3M71B) .....	155
TRANSMISSION CASE & FITTING PARTS .....	156
TRANSMISSION GEAR .....	157
OIL PUMP, CLUTCH & BRAKE PARTS .....	158
TRANSMISSION CONTROL VALVE .....	159
GASKET-KIT, AUTOMATIC TRANSMISSION .....	160
TRANSMISSION CONTROL DEVICE (R-DRIVE) .....	161A
TRANSMISSION CONTROL DEVICE (L-DRIVE) .....	161B
PROPELLER-SHAFT (80H) .....	162
FINAL DRIVE (C200) .....	163

### AXLE & SUSPENSION

SECTION NAME	SECTION NO.
FRONT AXLE & SWIVEL PARTS .....	166
FRONT SUSPENSION .....	167
REAR AXLE .....	168
REAR SUSPENSION .....	169
ROAD WHEEL & TIRE .....	170

**BRAKE**

SECTION NAME	SECTION NO.
PARKING BRAKE CONTROL PARTS(R-DRIVE).....	172A
PARKING BRAKE CONTROL PARTS(L-DRIVE).....	172B
BRAKE PIPING(R-DRIVE).....	173A
BRAKE PIPING(L-DRIVE).....	173B
FRONT BRAKE.....	174
FRONT BRAKE(FROM APR. '86).....	174A
REAR BRAKE.....	175
BRAKE PEDAL.....	176
BRAKE MASTER CYLINDER(R-DRIVE).....	177
BRAKE MASTER CYLINDER(L-DRIVE).....	177A
MASTER VAC & PIPING.....	178

**STEERING**

SECTION NAME	SECTION NO.
STEERING GEAR(R-DRIVE).....	181
STEERING GEAR(L-DRIVE).....	181A
STEERING COLUMN(R-DRIVE).....	182
STEERING COLUMN(L-DRIVE).....	182A
STEERING LINKAGE(R-DRIVE).....	183A
STEERING LINKAGE(L-DRIVE).....	183B
POWER STEERING CONTROL(R-DRIVE).....	184A
POWER STEERING CONTROL(L-DRIVE).....	184B
STEERING WHEEL & LOCK.....	185
STEERING OIL PUMP(L-DRIVE).....	186

**BODY**

SECTION NAME	SECTION NO.
FRONT BUMPER.....	188
FRONT GRILLE.....	189
FRONT APRON & RADIATOR CORE SUPPORT.....	190
FRONT FENDER & FITTING.....	191
HOOD LEDGE & FITTING.....	192
HOOD PANEL, HINGE & FITTING.....	193
CONVL TOP PARTS.....	194
DASH PANEL & TRIMMING(R-DRIVE).....	195A
DASH PANEL & TRIMMING(L-DRIVE).....	195B
INSTRUMENT PANEL & PAD (R-DRIVE).....	196
INSTRUMENT PANEL & PAD (L-DRIVE).....	196A
INSTRUMENT PANEL & FITTING(R-DRIVE).....	197
INSTRUMENT PANEL & FITTING(L-DRIVE).....	197A
WINDSHIELD.....	198
ROOF PANEL FITTING.....	199
ROOF TRIMMING.....	200
FLOOR PANEL.....	201
FLOOR FITTING PARTS.....	202
FLOOR CARPET.....	203
MEMBLR PARTS.....	204
BODY SIDE PANEL.....	205
BODY SIDE FITTING.....	206
REAR FENDER FITTING.....	207
REAR PANEL & FITTING.....	208
REAR WINDOW.....	209

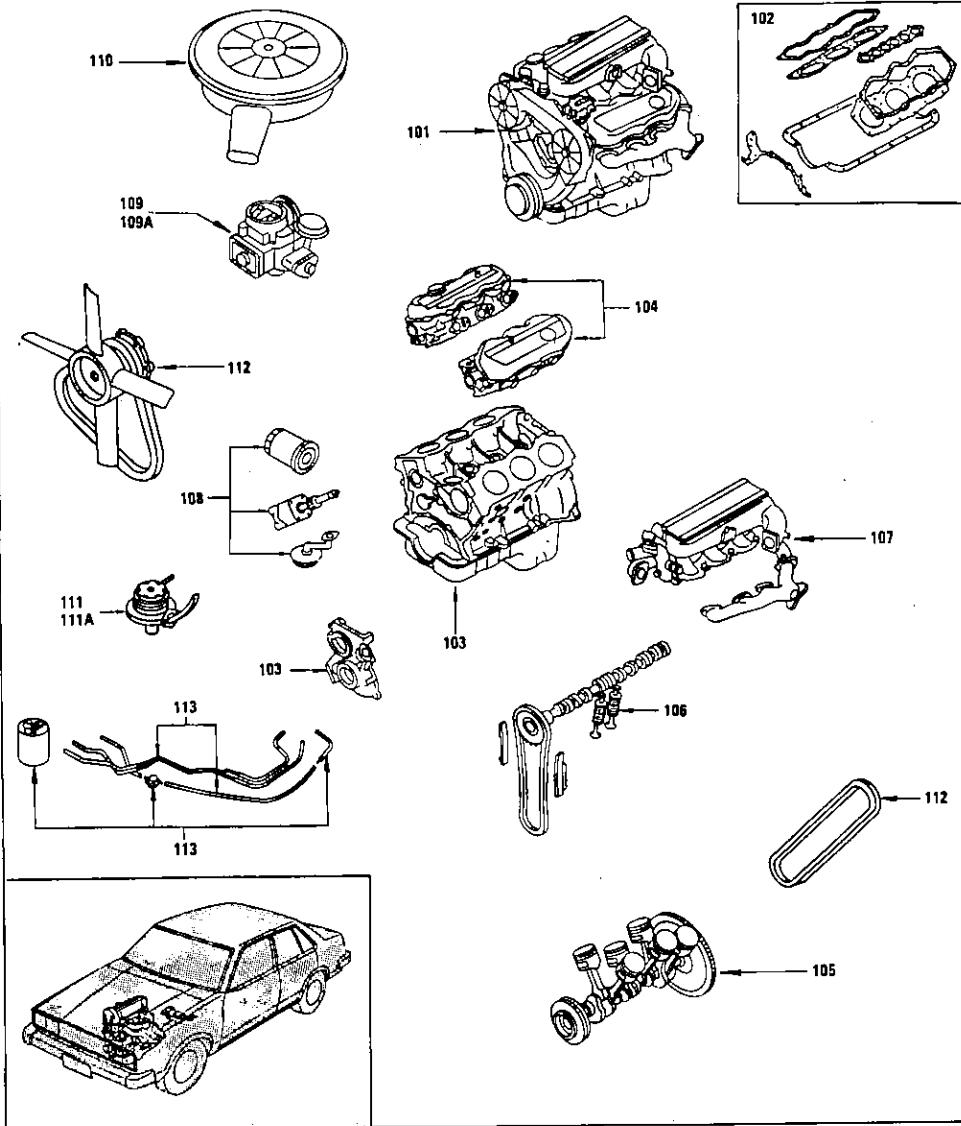
SECTION NAME	SECTION NO.
FRONT DOOR PANEL & FITTING.....	210
FRONT DOOR LOCK & HANDLE.....	211
FRONT POWER WINDOW & REGULATOR.....	212
FRONT DOOR TRIM.....	213
REAR DOOR PANEL & FITTING PARTS.....	214
REAR DOOR LOCK & HANDLE.....	215
REAR POWER WINDOW & REGULATOR.....	216
REAR DOOR TRIM.....	217
TRUNK LID & FITTING PARTS.....	218
TRUNK ROOM & TRIM.....	219
REAR BUMPER.....	220
SEAT BELT, HEAD REST.....	221
FRONT SEAT(DUAL TYPE).....	222
FRONT SEAT(SEPARATE TYPE).....	223
FRONT SEAT (POWER)(R-DRIVE) (CLOTH UP TO MAY '85) (LEATHER UP TO MAR. '86).....	224
FRONT SEAT (POWER)(L-DRIVE) (CROTH UP TO MAY '85) (LEATHER UP TO MAR. '86).....	224A
FRONT SEAT (POWER)(R-DRIVE) (CROTH FROM JUN '85) (LEATHER FROM MAR. '86).....	224B
FRONT SEAT (POWER)(L-DRIVE) (CLOTH FROM JUN '85) (LEATHER FROM MAR. '86).....	224C
REAR SEAT.....	225
REAR SEAT(POWER).....	226
REAR VIEW MIRROR.....	227
CONSOLE BOX.....	228

SECTION NAME	SECTION NO.
MOULDING PARTS.....	229

**MISCELLANEOUS**

SECTION NAME	SECTION NO.
EMBLEM.....	230
KEY-SET.....	231
CAUTION LABEL.....	232
TOUCH-UP PAINT.....	233
TOOL KIT.....	234

# GROUP INDEX ENGINE MECHANICAL



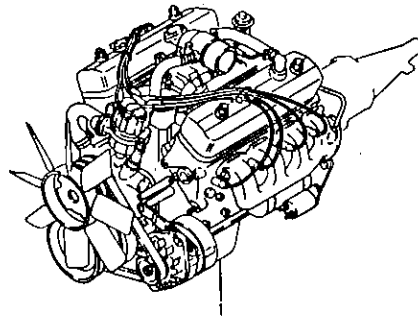
\*ILLUSTRATIONS SHOWN IN GENERAL INDEX AND GROUP INDEX ARE GENERALIZED DESCRIPTIONS FOR ALL MODELS AND ARE NOT PRECISE IN ALL DETAILS.

SECTION NAME	SECTION NO.
ENGINE ASSEMBLY .....	101
ENGINE GASKET KIT .....	102
CYLINDER BLOCK & OIL PAN .....	103
CYLINDER HEAD & ROCKER COVER .....	104
CRANKSHAFT, PISTON & CONNECTING ROD .....	105
CAMSHAFT & VALVE MECHANISM .....	106
MANIFOLD .....	107
OIL PUMP .....	108
CARBURETOR .....	109
CARBURETOR (FROM FEB. '84) .....	109A
AIR CLEANER .....	110
FUEL PUMP .....	111
ELECTRICAL PUMP .....	111A
WATER PUMP .....	112
EGR & EVAPO. SYSTEM .....	113

SECTION NO.

**101**<sub>-1</sub>

ENGINE ASSEMBLY



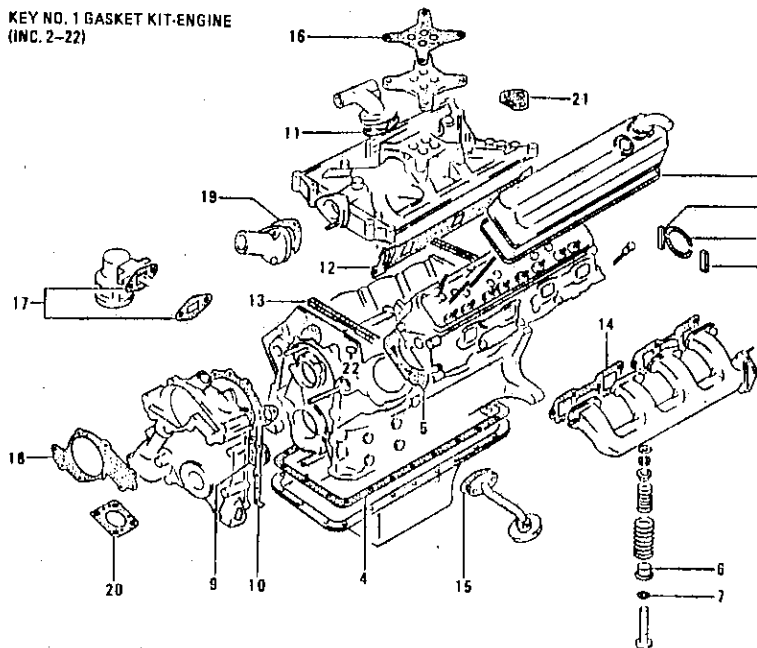
NOTE

N D	S	KEY NO.	PART NUMBER	PART NAME	SPECIFICATION	QTY	UNT PKG. FOR DIST.	P M G	APPLIED MODEL	APPLIED DATE	ICA N F	FORMER PART NO.	K D	REMARK
		1 01	10000-F3055	ENGINE ASSY WITH ATMTRANSITION		01			R-DRIVE					
		02	-F3155			01			L-DRIVE					

SECTION 100.

**102-1**

ENGINE GASKET KIT

NOTE: KEY NO. 1 GASKET KIT-ENGINE  
(INC. 2--22)

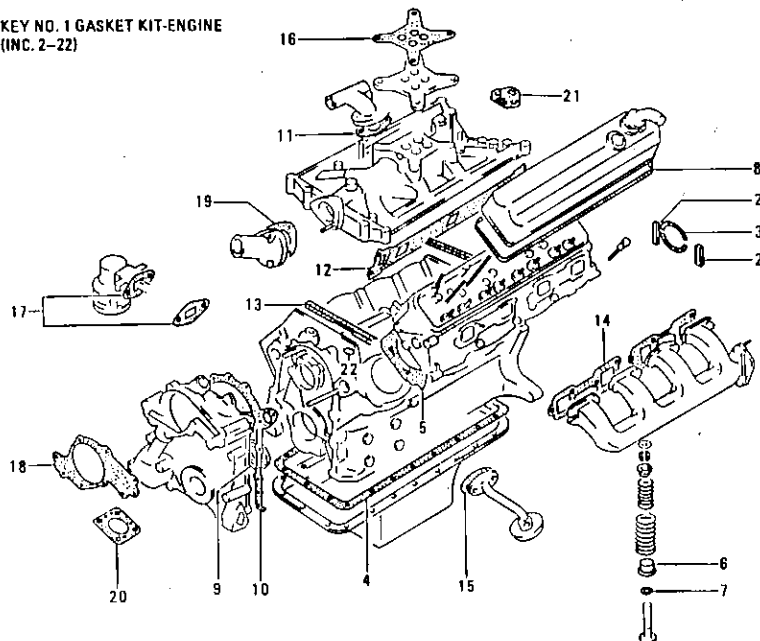
NOTE

N C	S	KEY NO.	PART NUMBER	PART NAME	SPECIFICATION	QTY	LIMIT PKGS. FOR USE	P M O	APPLIED MODEL	APPLIED DATE	ICA N F	FORMER PART NO.	K O	REMARK
		1 01	10101-F2785	GASKET-KIT,ENGINE	Y44S	01			ALL	1282-	⇒	10101-F2525		
		2 01	12289-65001	SEAL-OIL,CAP SIDE		02			ALL	1282-				
		3 01	12279-58000	SEAL-OIL,CRANKSHAFT REAR		02			ALL	1282-				
		4 01	11121-65002	GASKET,OIL PAN		01			ALL	1282-				
		5 01	11044-F1102	GASKET,CYLINDER HEAD		02			ALL	1282-				
		6 01	13207-66700	SEAL-LIP VALVE,EXHOUT		08			ALL	1282-				
		7 01	13207-66700	SEAL-LIP VALVE OIL INTAKE		08			ALL	1282-				
		8 01	13270-65000	GASKET,ROCKER COVER		02			ALL	1282-				
		8 01	13042-A3510	SEAL-OIL,FRONT COVER		01			ALL	1282-				
		10 01	13520-F1700	GASKET,FRONT COVER		01			ALL	1282-				
		11 01	14021-65000	GASKET,WATER BY PASS		01			ALL	1282-				
		12 01	14035-F1100	GASKET,INTAKE MANIFOLD		02			ALL	1282-				
		13 01	14036-65005	GASKET,MANIFOLD TO BLOCK		02			ALL	1282-				
		14 01	14005-F2700	GASKET,EXHAUST MANIFOLD		04			ALL	1282-				
		15 01	15059-65000	GASKET,OIL STRAINER		01			ALL	1282-				
		16 01	16174-F1700	INSULATOR,CARBURETOR		01			ALL	1282-				
		17 01	17099-21002	PACKING,FUEL PUMP		02			ALL	1282-				
		18 01	21014-F1700	GASKET,WATER PUMP		01			ALL	1282-				

SECTION NO.

**102-2**

ENGINE GASKET KIT

NOTE: KEY NO. 1 GASKET KIT-ENGINE  
(INC. 2-22)

NOTE

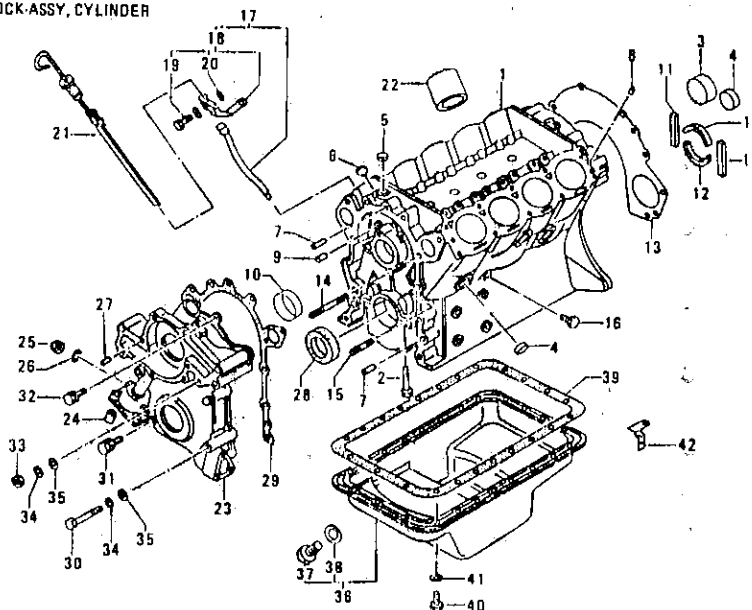
N C	S	KEY NO.	PART NUMBER	PART NAME	SPECIFICATION	QTY	UNIT FIG. FOR DIST	P M C	APPLIED MODEL	APPLIED DATE	ICA N F	FORMER PART NO.	K D	REMARK
		19 01	11062-65000	GASKET, WATER OUTLET		01			ALL	1282-				
		20 01	15025-65000	GASKET, OIL PUMP		01			ALL	1282-				
		21 01	14719-N3301	GASKET, EGR CUT VALVE		01			ALL	1282-				
		22 01	22228-65000	O-RING DISTRIBUTOR		01			ALL	1282-				



SECTION NO.

**103**<sub>-1</sub>

CYLINDER BLOCK &amp; OIL PAN

NOTE: KEY NO. 1 BLOCK-ASSY, CYLINDER  
(INC. 2-12)

NOTE

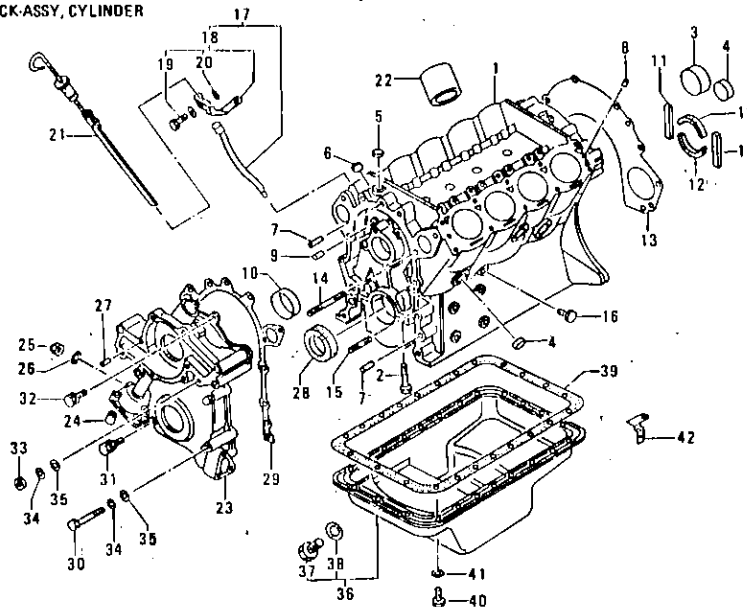
N C	S	KEY NO.	PART NUMBER	PART NAME	SPECIFICATION	QTY	UNIT PKG. FOR DIST	P M C	APPLIED MODEL	APPLIED DATE	ICA N F	FORMER PART NO.	K D	REMARK
		1 01	11010-F1785	BLOCK-ASSY, CYLINDER		01			ALL	1282-0284				
		02	-F1709			01			ALL	0284-		11010-F1785		
		2 01	00131-88510	BOLT-HEX, 1/2"		10			ALL	1282-				
		3 01	11019-65000	PLUG-HELCH 53		01			ALL	1282-				
		4 01	11021-E3000	PLUG-HELCH 35		08			ALL	1282-				
		5 01	00933-21550	PLUG-CRANK CASE OIL GALLERY		05			ALL	1282-				
		6 01	11022-F2000	PLUG-BLIND 8		04			ALL	1282-				
		7 01	30412-P5100	DOHEL-TIMING CHAIN CASE & CLUTCH HOUSE		04			ALL	1282-				
		8 01	11022-65001	DOHEL-CYLINDER HEAD		04			ALL	1282-				
		8 01	00931-10200	PLUG-OIL GALLERY, SQUARD HEAD 1/8"		04			ALL	1282-				
		10 01	13002-F1701	SET-BUSH, CAMSHAFT	STANDARD SIZE	01			ALL	1282-				
		02	13003-F1700		UNDER SIZE 0.25MM	01			ALL	1282-				
		03	13004-F1700		UNDER SIZE 0.50MM	01			ALL	1282-				
		04	-F1701		UNDER SIZE 0.75MM	01			ALL	1282-				
		11 01	12289-65001	SEAL-OIL, REAR BEARING CAP SIDE		02			ALL	1282-				

SECTION NO.

**103**-2

CYLINDER BLOCK &amp; OIL PAN

NOTE

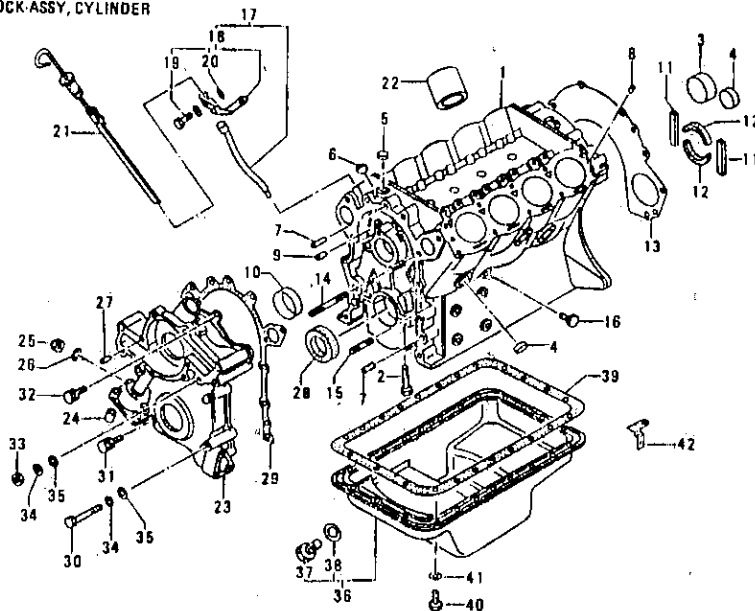
NOTE: KEY NO. 1 BLOCK-ASSY, CYLINDER  
(INC. 2-12)

N C	S	KEY NO.	PART NUMBER	PART NAME	SPECIFICATION	QTY	UNIT PKG. FOR DIST	P M C	APPLIED MODEL	APPLIED DATE	ICA N F	FORMER PART NO.	K D	REMARK
		12 01	12279-58000	SEAL-OIL, CRANKSHAFT REAR END		02			ALL	1282-				
		13 01	30411-65000	PLATE-ENGINE REAR		01			ALL	1282-				
		14 01	13039-F1700	STUD, M8	L=118	02			ALL	1282-				
		15 01	08223-84510	STUD, M8	L=45	01			ALL	1282-				
		16 01	08931-30410	PLUG-DRAIN		02			ALL	1282-				
		17 01	11130-F1700	GUIDE-OIL, LEVEL GAUGE		01			ALL	1282-				
		18 01	11132-F1702	SUPPORT-GUIDE, OIL LEVEL GAUGE		01			ALL	1282-				
		19 01	08110-61210	BOLT-HEX, M6		01			ALL	1282-				
		20 01	08915-13610	WASHER-LOCK, M6		01			ALL	1282-				
		21 01	11140-65002	GAUGE-ASSY, OIL LEVEL		01			ALL	1282-				
		22 01	11012-65000	LINER-CYLINDER, OVER SIZE 4.00MM		08			ALL	1282-				
		02	11013-65000	LINER-CYLINDER, OVER SIZE 4.50MM		08			ALL	1282-				
		03	11014-65000	LINER-CYLINDER, OVER SIZE 5.00MM		08			ALL	1282-				
		23 01	13500-F1700	COVER-ASSY, FRONT		01			ALL	1282-				
		24 01	15042-65000	BUSHING-OIL PUMP DRIVING		02			ALL	1282-				

SECTION NO.

**103-3**

CYLINDER BLOCK &amp; OIL PAN

NOTE: KEY NO. 1 BLOCK-ASSY, CYLINDER  
(INC. 2-12)

NOTE

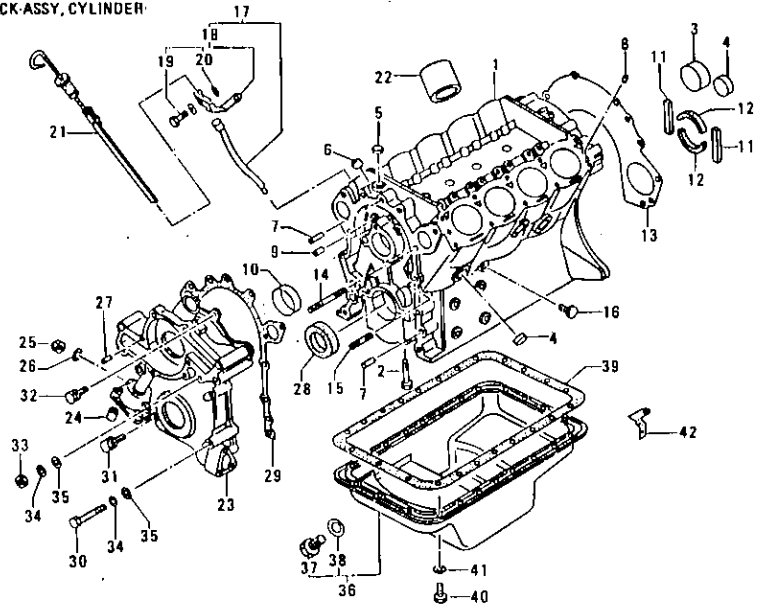
N	S	KEY NO.	PART NUMBER	PART NAME	SPECIFICATION	QTY	UNIT PKG. FOR DST	P M C	APPLIED MODEL	APPLIED DATE	ICA N F	FORMER PART NO.	K D	REMARK
		25 01	15134-10602	NUT-CAP		01			ALL	1282-				
		26 01	15136-10601	WASHER-CAP NUT		01			ALL	1282-				
		27 01	11046-73402	DOWEL		04			ALL	1282-				
		28 01	13042-A3510	SEAL-OIL, FRONT COVER		01			ALL	1282-				
		29 01	13520-F1700	GASKET-COVER, FRONT		01			ALL	1282-				
		30 01	08120-88010	BOLT-HEX, M8X1.25X80 TO FIX FRONT COVER		04			ALL	1282-				
		31 01	08120-84520	BOLT-HEX, M8X1.25X45 TO FIX FRONT COVER		01			ALL	1282-				
		32 01	08120-82533	BOLT-HEX, M8X1.25X25 TO FIX FRONT COVER		02			ALL	1282-				
		33 01	08911-20810	NUT-HEX, M8 TO FIX FRONT COVER		01			ALL	1282-				
		34 01	08915-13810	WASHER-LOCK TO FIX FRONT COVER.		05			ALL	1282-				
		35 01	08915-43810	WASHER-PLAIN		05			ALL	1282-				
		36 01	11110-F2700	PAN ASS'Y, OIL		01			ALL	1282-				
		37 01	11128-69200	PLUG-DRAIN, OIL PAN		01			ALL	1282-				
		38 01	11026-61000	WASHER, DRAIN PLUG		01			ALL	1282-				
		39 01	11121-65002	GASKET-OIL PAN		01			ALL	1282-		⇒ 11121-65001		

SECTION NO.

**103**-4

CYLINDER BLOCK & OIL PAN

NOTE: KEY NO. 1 BLOCK-ASSY, CYLINDER-  
(INC. 2-12)



NOTE

N C	S	KEY NO.	PART NUMBER	PART NAME	SPECIFICATION	QTY	UNIT PKG. FOR UNIT	PI M/C	APPLIED MODEL	APPLIED DATE	ICA N F	FORMER PART NO.	K D	REMARK
		40 01	08120-61628	BOLT-HEX, M6X16, WITH WASHER		23			ALL	1282-				
		41 01	08915-13610	WASHER-SPRING, TO FIX OIL PAN		01			ALL	1282-				
		42 01	11117-F2000	BRACKET-TUBE CLAMP		01			ALL	1282-				