

# NICHIYU

# PARTS LIST

97-P-1506

FBRF 10 / 13 - 55

FBRF (W) 14 / 15 / 18 - 55

**NICHIYU**  
**NIPPON YUSOKI CO., LTD.**  
KYOTO, JAPAN

# I N D E X

FBRF10/13-55  
FBRF(W)14/15/18-55

FIG. NO.	I T E M
	CHASSIS
1-1	FRAME
1-2	COVER(1)
1-4	COVER(2)
1-5	GUARD
1-7	FLOOR PLATE
1-8	BATTERY CLAMP
1-11	EMERGENCY PARTS
1-12	FRAME PARTS
1-13	WEIGHT
1-14a	SEAT(std)
1-14b	SEAT(EEC)
1-15	OVERHEAD GUARD
1-16	FOOT SWITCH(EEC)
1-17a	NAME PLATE(Exp)
1-17b	NAME PLATE(EEC)
1-17c	NAME PLATE(Dom)
	DRIVE
2-10a	WHEEL(LOAD)[10/13]
2-10b	WHEEL(LOAD)[14/15/18]

N.B.)The itemes not mentioned in this parts list shall be referred to the parts list see  
below for type50.

注)このパーツリストに編集されていない項目は、下記の50型のパーツリストを参照してください。

# I N D E X

FIG. NO.	I T E M
	HYDRAULIC
4-6a	FRAME PIPING(2)[P <sub>m</sub> /M <sub>m</sub> -NT]
4-6b	FRAME PIPING(2)[P <sub>m</sub> /M <sub>m</sub> -CS, FCS]
4-6c	FRAME PIPING(2)[F <sub>m</sub> ]
4-7	BAND
	CONTROL
9-1	CONTROL UNIT
9-2	CONTACTOR FIT.
9-3	CONTACTOR PARTS
9-8	CHOPPER UNIT PARTS
9-10	CHOPPER UNIT(TRAVEL)(2)
9-12	CHOPPER UNIT (Hyd.)(2)
9-14	MPU BOARD
9-15	CONTROL UNIT PARTS(1)
9-16	CONTROL UNIT PARTS(2)
9-17	COVER(CS)
	ELECTRIC PARTS
10-1	ACCELERATOR(1)

# I N D E X

FIG. NO.	I T E M
10-2	ACCELERATOR(2)
10-3	FUSE
10-7	PANEL(CONTROL)
10-9	DIRECTIONAL SWITCH(1)
10-12	BATTERY
	ACCESSORY
11-1	WIRE HARNESS(1)
11-2	WIRE HARNESS(2)
11-4	WIRE HARNESS(4)
11-5	WIRE HARNESS(5)
	MAST
12-1a	REACH CYLINDER[Pm]
12-1b	REACH CYLINDER[Mm]
12-1c	REACH CYLINDER[Fm]
Example Illustration	
	SIMPLEX MAST
2053	LIFT CYLINDER
2054	TILT CYLINDER
2059	MAST PIPING

# I N D E X

FIG. NO.	I T E M
2061	OUTER MAST
2063	INNER MAST
2064	CHAIN WHEEL
	TRIPLEX MAST
2152	LIFT CYLINDER(1st)
2153	LIFT CYLINDER(2nd)
2154	TILT CYLINDER
2159	MAST PIPING
2161	OUTER MAST
2162	MIDDLE MAST
2163	INNER MAST
2164	CHAIN WHEEL(MAST)
2165	CHAIN WHEEL(LIFT)
	DUPLEX MAST
2252	LIFT CYLINDER(1st)
2253	LIFT CYLINDER(2nd)
2254	TILT CYLINDER
2259	MAST PIPING
2261	OUTER MAST
2263	INNER MAST
2264	CHAIN WHEEL



FIG. 1-1

FRAME

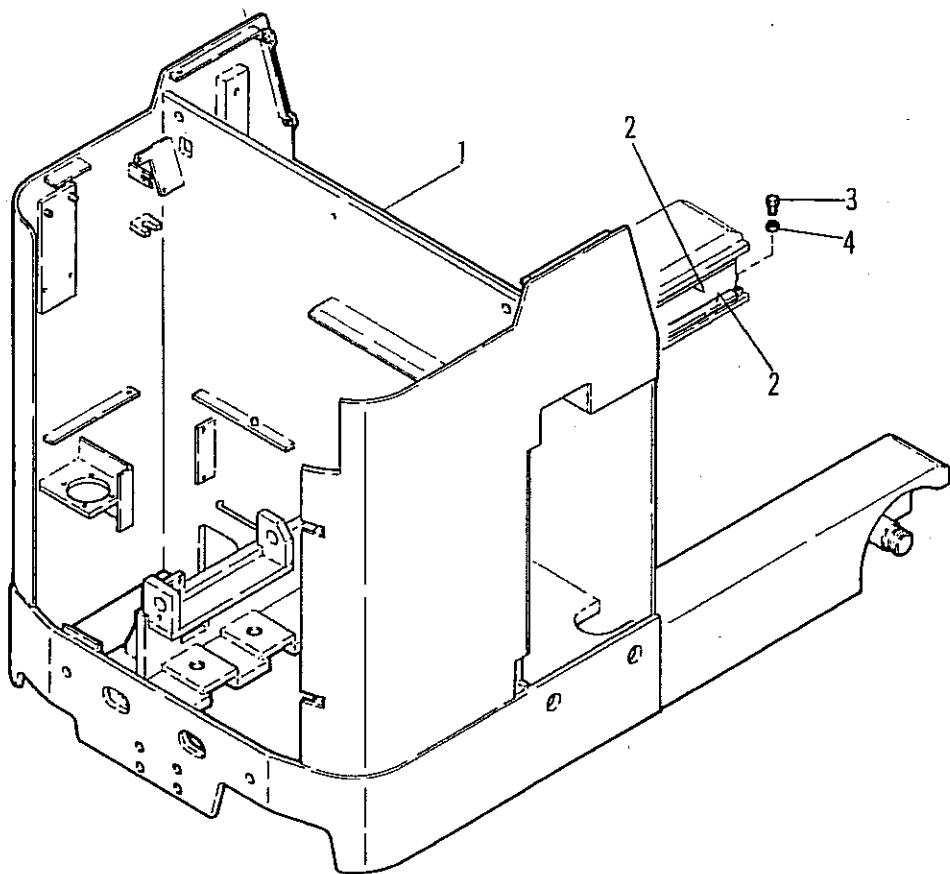


Fig. 1-1

## FRAME

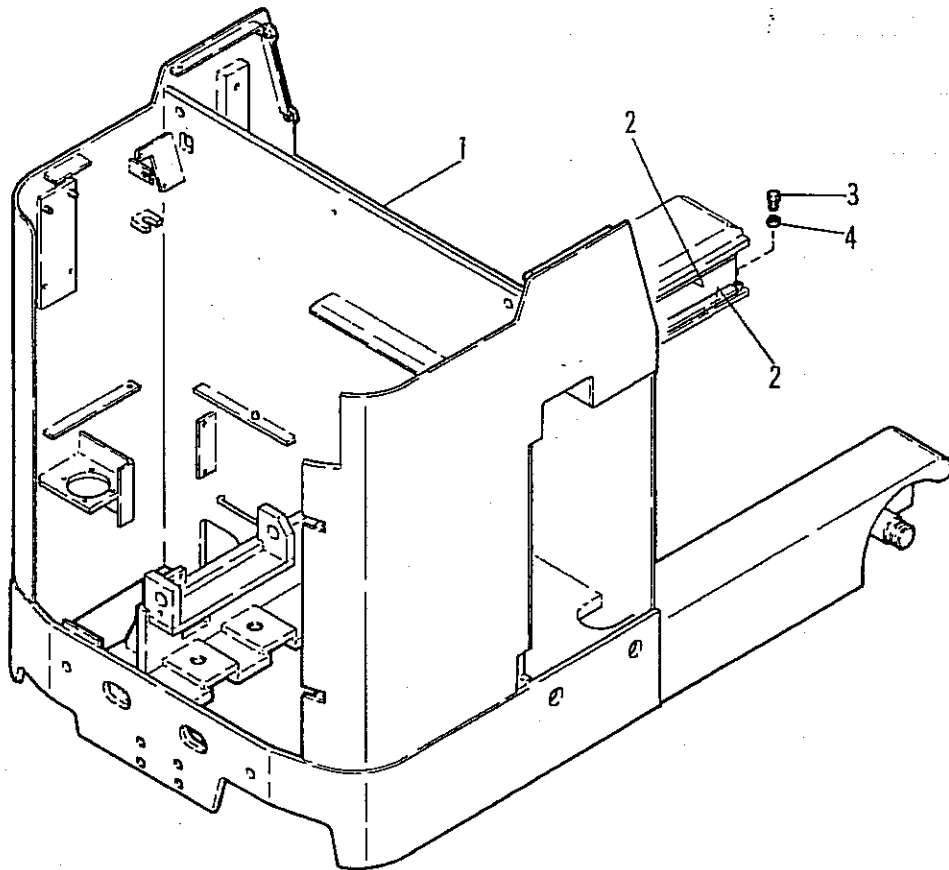
[10~18]

No.	Parts No.	Parts Name	Inter- change ability	Serial No.	contents	Q'ty	Remarks
		[RF10/13]					
		(201Ah~240Ah)					
1	14102-87340	Frame sub ass'y				1	
		(290Ah)					
1	14103-20380	Frame sub ass'y				1	
		[RF(W)14/15/18 210Ah~370Ah]					
		(Pm/Fm)					
1	14102-87350	Frame sub ass'y				1	RF14
1	14102-87550	Frame sub ass'y				1	RF15
1	14102-87560	Frame sub ass'y				1	RF18
		(Mm)					
1	14102-87571	Frame sub ass'y				1	RF14
1	14102-87581	Frame sub ass'y				1	RF15
1	14102-87591	Frame sub ass'y				1	RF18
		[RF(W)14/15/18 445Ah/470Ah]					
		(Pm/Fm)					
1	14103-20390	Frame sub ass'y				1	RF14
1	14103-20400	Frame sub ass'y				1	RF15
1	14103-20410	Frame sub ass'y				1	RF18
		(Mm)					
1	14103-20420	Frame sub ass'y				1	RF14
1	14103-20430	Frame sub ass'y				1	RF15
1	14103-20440	Frame sub ass'y				1	RF18
2	14100-64470	Liner				4	RF10/13



FIG. 1-1

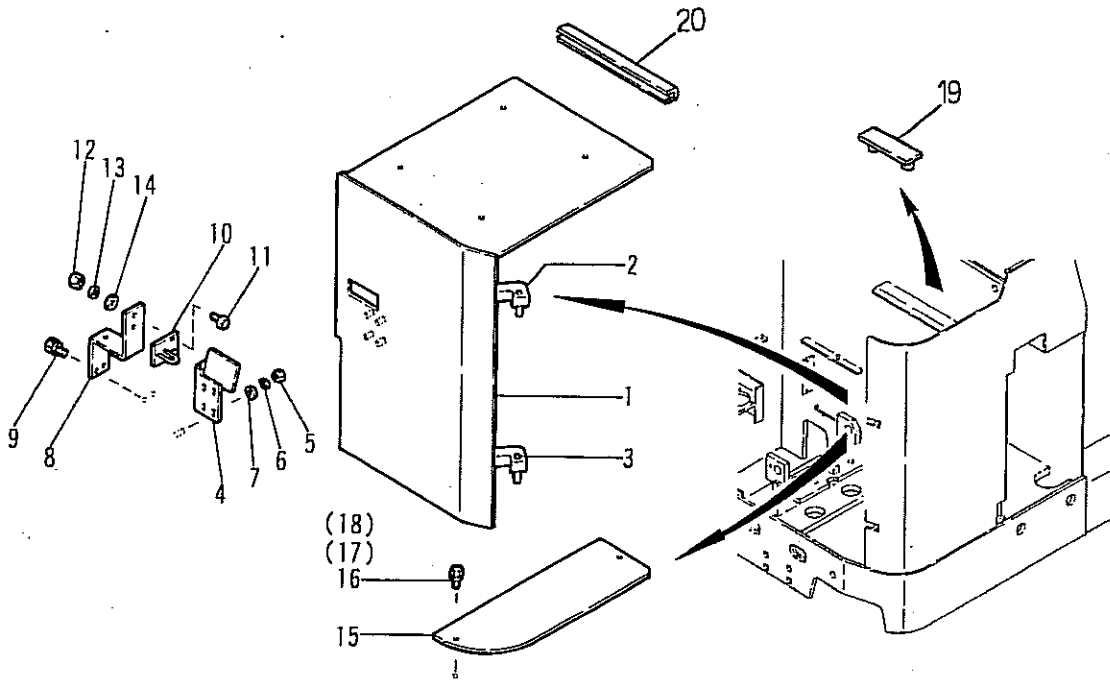
FRAME





**FIG. 1-2**

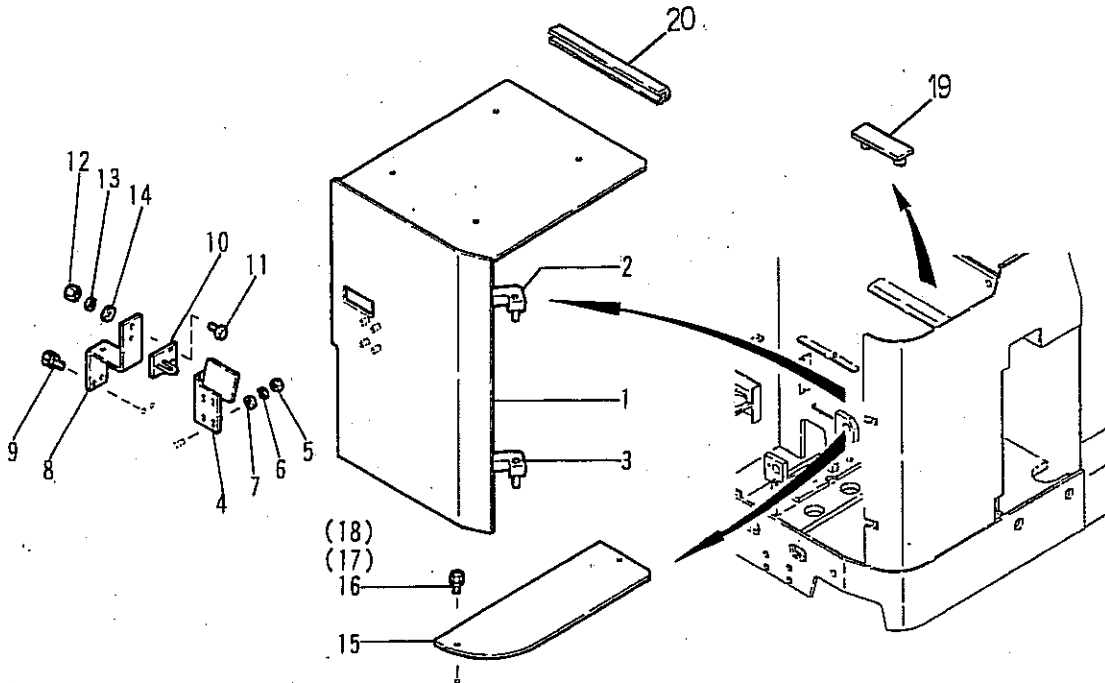
**COVER (1)**



No.	Parts No.	Parts Name	Inter-changeability	Serial No.		Contents	Q'ty	Classifica-tion	Remarks
				10/13	14/15/18				
1	14102-93760	Bonnet					1	IV	Std
2	14100-74020	Support					1	IV	
3	14100-74010	Support					1	IV	
4	1923-17019	Lock					1	IV	
5	0000-00006	Nut					4	III	
6	0000-70006	Washer, lock					4	III	
7	0000-72006	Washer, plain					4	III	
8	14100-70541	Bracket, hook					1	IV	
9	0016-08016	Bolt					2	III	
10	1923-17020	Hook					1	IV	
11	0010-08016	Bolt					2	III	
12	0000-00008	Nut					2	III	
13	0000-70008	Washer, lock					2	III	
14	0000-72008	Washer, plain					2	III	

**FIG. 1-2**

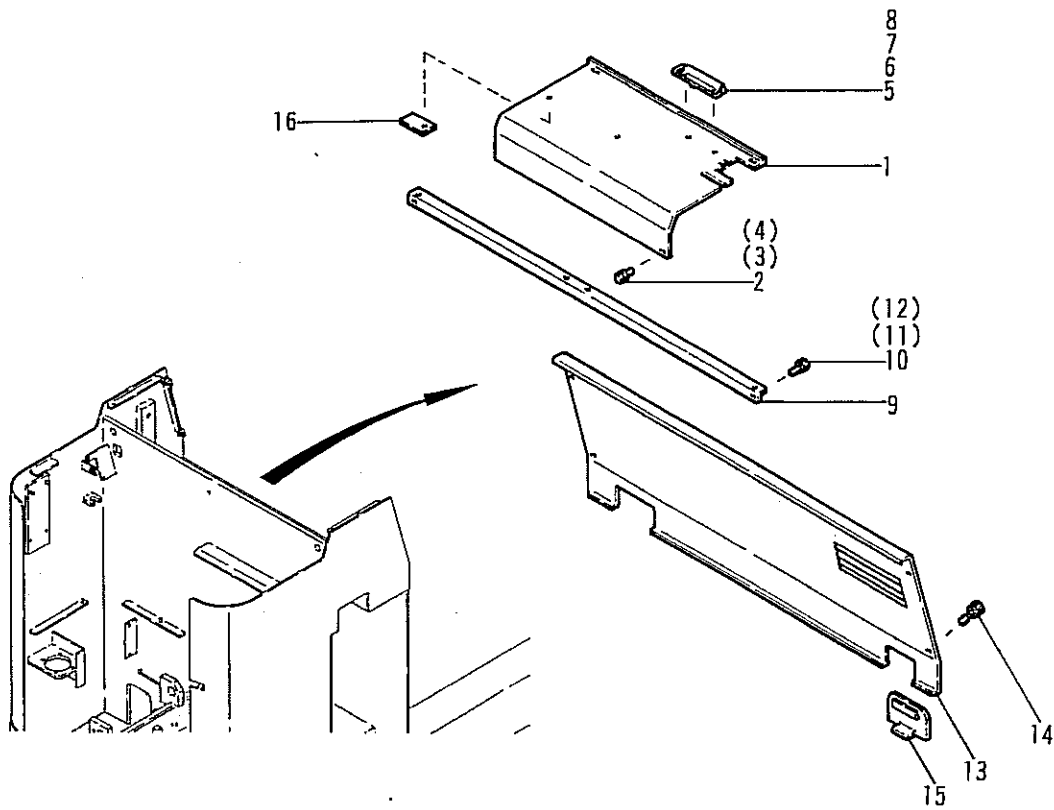
**COVER (1)**



No.	Parts No.	Parts Name	Inter-changeability	Serial No.		Contents	Q'ty	Classi-fication	Remarks
				10/13	14/15/18				
15	14100-70452	Bonnet					1	IV	Std
16	0016-08016	Bolt					2	III	NT
16	0014-08016	Bolt					2	III	CS, FCS
17	0000-70008	Washer, lock					2	III	CS, FCS
18	0000-72008	Washer, plain					2	III	CS, FCS
19	14600-91230	Shoe, back					1		
20	32390-00450	Trim					1		

**FIG. 1-4**

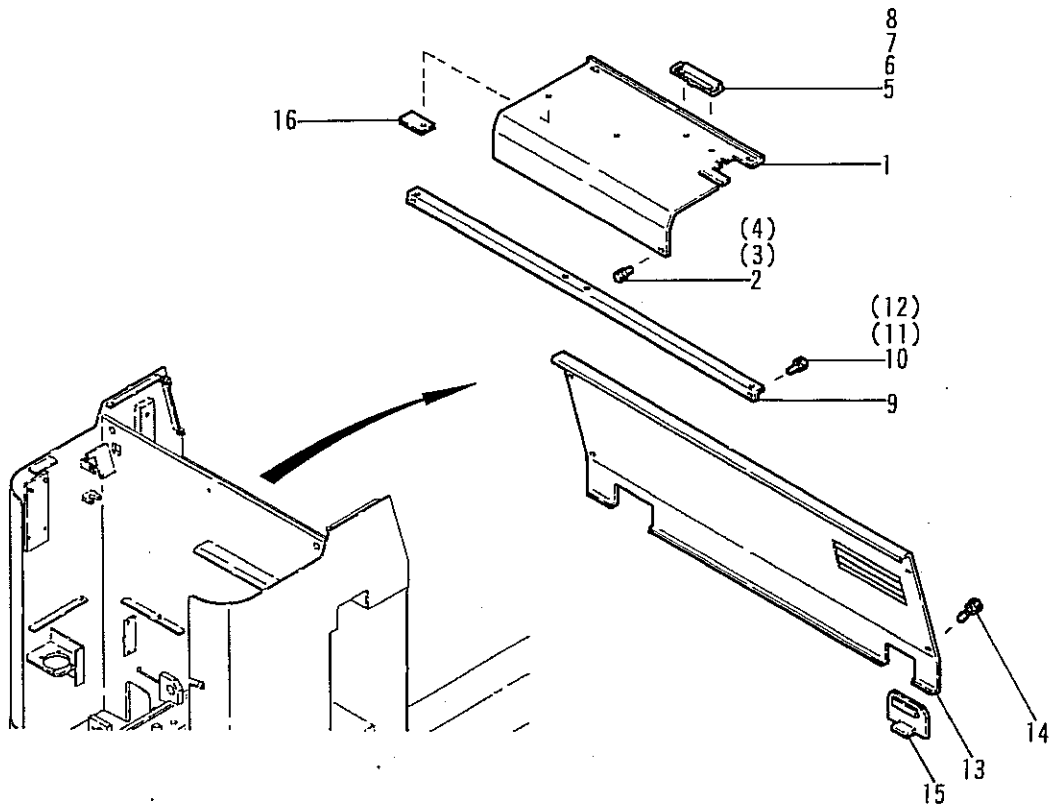
**COVER (3)**



No.	Parts No.	Parts Name	Inter-changeability	Serial No.		Contents	Q'ty	Classifica-tion	Remarks
				10/13	14/15/18				
1	14100-70282	Cover (RH), top					1	IV	
2	31010-01900	Bolt w/washers					4	III	NT
2	0014-08016	Bolt					4	III	CS, FCS
3	0000-70008	Washer, lock					4	III	CS, FCS
4	0000-72008	Washer, plain					4	III	CS, FCS
5	1906-39014	Clip					1	IV	
6	0070-04010	Screw, pan head					2	III	
7	0000-00004	Nut					2	III	
8	0000-70004	Washer, lock					2	III	
9	14100-95480	Member, cross					1	IV	
10	0016-06016	Bolt					2	III	NT
10	0014-06016	Bolt					2	III	CS, FCS
11	0000-70006	Washer, lock					2	III	CS, FCS
12	0000-72006	Washer, plain					2	III	CS, FCS
13	14100-70291	Cover, front					1	IV	RF10/13

# FIG. 1-4

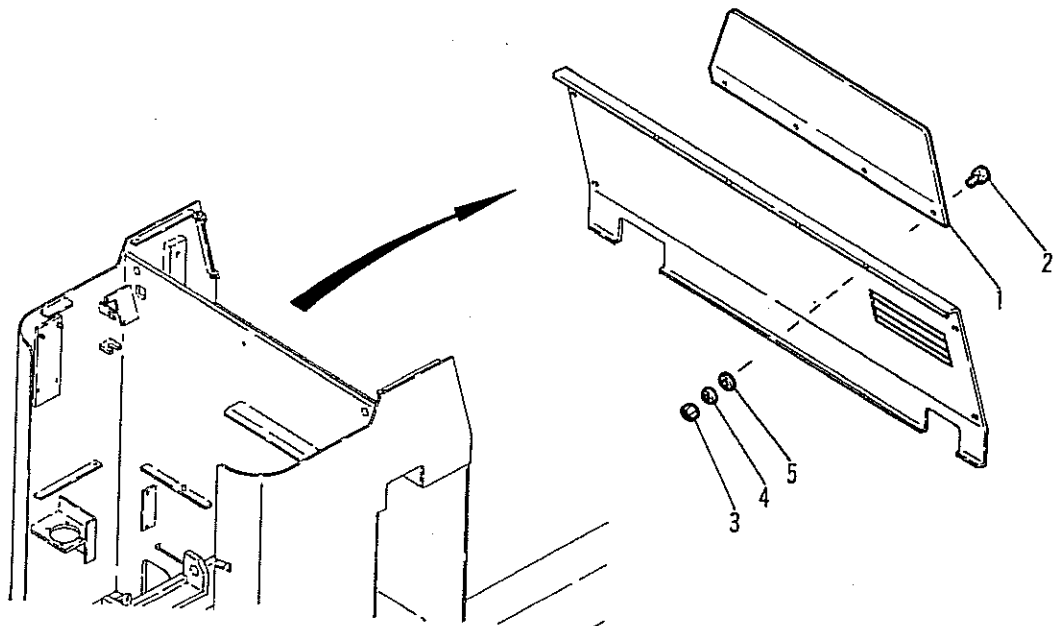
# COVER (3)



No.	Parts No.	Parts Name	Inter-changeability	Serial No.		Contents	Q'ty	Classifica-tion	Remarks
				10/13	14/15/18				
13	14100-70301	Cover, front					1	IV	RF14/15/18-Pm/Fm
13	14100-70311	Cover, front					1	IV	RFW14/15/18-Mm
14	32310-00400	Knob					4	III	
15	14101-09440	Cover					1	IV	3 spools
16	14101-14440	Support, panel					1	IV	

**FIG. 1-5**

**GUARD**

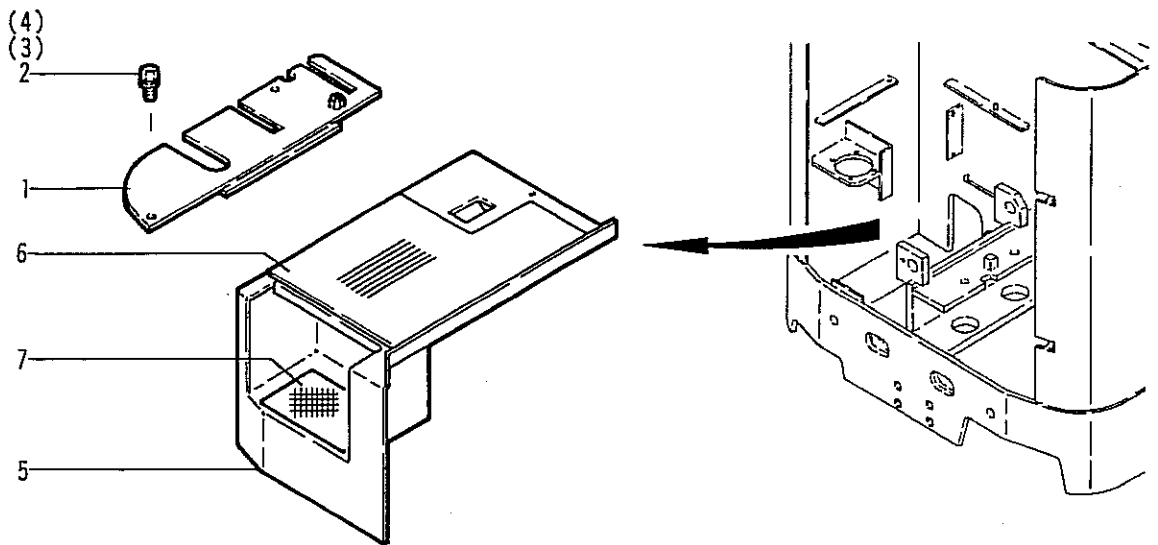


No.	Parts No.	Parts Name	Inter-changeability	Serial No.		Contents	Q'ty	Classi-fication	Remarks
				10/13	14/15/18				
1	4720-08130	Guard, front					1	IV	RF10/13
1	14100-70750	Guard, front					1	IV	RF(W)14/15/18
2	0070-08020	Bolt					4	III	
3	0000-00008	Nut					4	III	
4	0000-70008	Washer, lock					4	III	
5	0000-72008	Washer, plain					4	III	





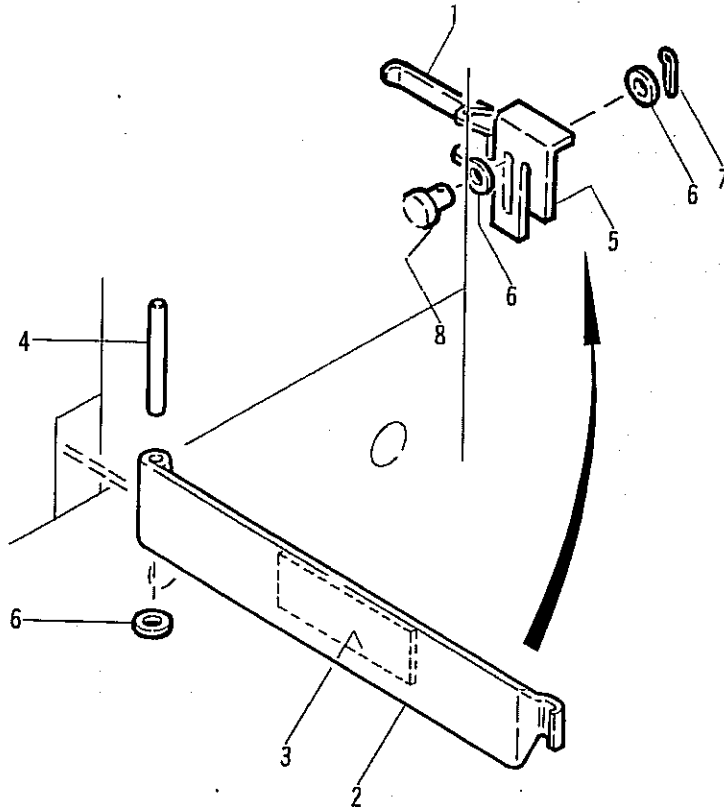
# FIG.1-7 FLOOR PLATE





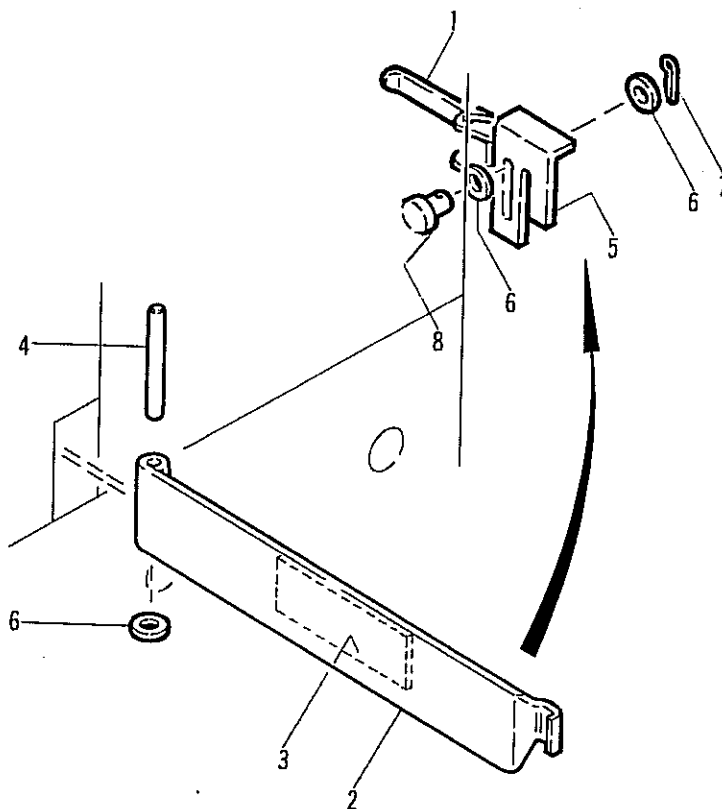
**FIG. 1-8**

**BATTERY CLAMP**



No.	Parts No.	Parts Name	Inter-changeability	Serial No.		Contents	Q'ty	Classification	Remarks
				10/13	14/15/18				
		[RF10/13]							
A	14100-64940	Clamp comp.				1~8	1	IV	201Ah~240Ah
A	14100-91870	Clamp comp.				1~8	1	IV	290Ah
		[RF(W)14/15/18]							
A	14100-70320	Clamp comp.				1~8	1	IV	210Ah~370Ah
A	14100-91960	Clamp comp.				1~8	1	IV	445Ah/470Ah
1	14101-01760	Clamp comp., lever					1	IV	
		[RF10/13]							
2	14100-64970	Plate					1	IV	201Ah~240Ah
2	14100-91840	Plate					1	IV	290Ah
		[RF(W)14/15/18]							
2	14100-70330	Plate					1	IV	210Ah~370Ah

# FIG.1-8 BATTERY CLAMP



No.	Parts No.	Parts Name	Inter-changeability	Serial No.		Contents	Q'ty	Classification	Remarks
				10/13	14/15/18				
2	14100-91970	Plate					1	IV	445Ah/470Ah
3	4643-03640	Cushion t5.0					1	III	
							1	III	
3	4643-03630	Cushion t8.0					1	III	
4	14100-64610	Pin					1	III	
5	4643-05280	Plate, lock					1	IV	
6	0000-72010	Washer, plain					3	III	
7	0302-30020	Pin, cotter					1	III	
8	4643-05290	Pin					1	III	