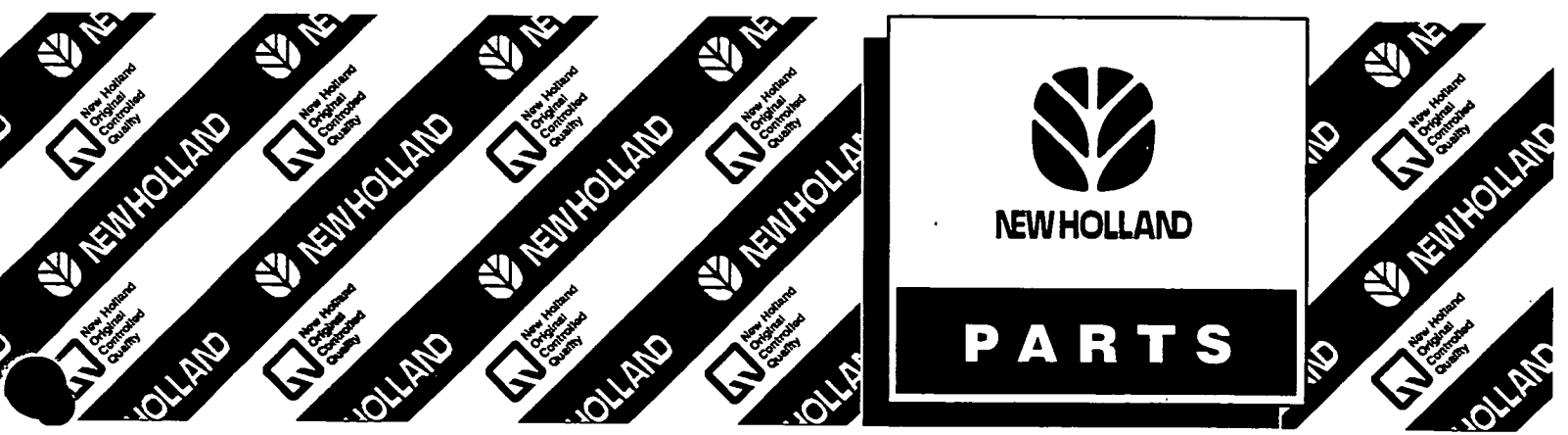


NEW HOLLAND Baler 580

SERVICE PARTS CATALOG



GENERAL INFORMATION

1. Whenever the terms left or right are used, it should be understood to mean from a position facing in direction of travel.
2. Throughout this manual you find common hardware not illustrated, but listed in the description column. The service part immediately preceding a hardware listing is the part using these particular items for mounting purposes. This hardware is not included with the service part or assembly when ordered as a replacement.
3. NEW HOLLAND NORTH AMERICA, Inc. is continually striving to improve its products. We must, therefore, reserve the right to make improvements or changes when it becomes practical and possible to do so, without incurring any obligation to make changes or additions to the equipment sold previously.

ORDERING PARTS

1. Please submit orders on the Standard Dealer Order Form and mail to your Branch Office. The form should be completely filled in and any special routing so indicated. Telephone orders, being less accurate, should be limited to "emergency situations."
2. It is advisable to consult the Service Parts Price List and/or the Historical Reference List for part number supersession, package quantity and other pertinent information.

ALWAYS USE GENUINE NEW HOLLAND PARTS

NEW HOLLAND NORTH AMERICA, INC., 500 DILLER AVENUE, NEW HOLLAND, PA 17557

TABLE OF CONTENTS

001	HITCH GROUP
002	TONGUE
003	JACK
004	AXLE & WHEEL
005	MAIN FRAME
006	FEEDER & HOUSING - RIGHT SIDE
007	HOUSING - LEFT SIDE
008	PTO POWER PIVOT
009	FRONT PTO ASSEMBLY
010	REAR PTO ASSEMBLY
011	PTO CLUTCH ASSEMBLY
012	GEARBOX & FLYWHEEL
013	MAIN DRIVE GEARBOX
014	FEEDER DRIVES SHAFT ASSEMBLY
015	PICKUP DRIVES ASSEMBLY
016	SHAFT & PICKUP FINGER ASSEMBLY
017	PIVOT PIPE ASSEMBLY
018	WINDGUARD & PICKUP WHEEL
019	ROTOR FEEDER
020	ROTARY FEEDER CRANK ASSEMBLY
021	FEEDER SHIELDING
022	PLUNGER
023	NEEDLE & YOKE GROUP, TWINE TIE
024	NEEDLE SAFETY LATCH
025	TWINE KNOTTER ASSEMBLY
026	TWINE KNOTTER FRAME ASSEMBLY
027	TWINE FINGER, LEVER & TWINE BOX
028	METERING WHEEL
029	ATTACHMENTS AND OPTIONAL EQUIPMENT TRIPLE PURPOSE BALE CHUTE
030	QUARTER TURN BALE CHUTE
031	715245001 HYDRAULIC PICKUP LIFT KIT (805445)
032	CYLINDER 849372 COMPONENTS (HYDRAULIC PICKUP LIFT KIT)
033	HYDRAFORMATIC BALE TENSION GROUP
034	HYDRAULIC PUMP 703197
035	HYDRAULIC TONGUE SWING KIT
036	HYDRAULIC CYLINDER TONGUE SWING KIT
037	LIGHT KIT
038	HYDRAULIC DOORS KIT
039	HYDRAULIC CYLINDER
040	SIGNS & DECALS
041	GRASS HAY FEEDER KIT
042	RECOMMENDED INITIAL PARTS STOCK LIST - DEALER INFORMATION ONLY

METRIC AND INCH HARDWARE

Allowances have been made in punched and drilled holes to allow interchangeability of metric and inch dimension hardware in fastening and mounting applications. However, this interchangeability does not apply to tapped holes or using metric dimension nuts on inch cap screws, studs and bolts. Likewise, inch dimension nuts cannot be used on metric cap screws, studs or bolts.

Following is a listing of Common sizes for substitution.

Inches	Screw Diameter	Millimeters
3/16"		5 mm
1/4"		6 mm
5/16 "		8 mm
*3/8"		*10 mm
1/2"		12 mm
9/16"		14 mm
5/8"		16 mm
	Screw Length	
5/8"		15 mm
3/4"		20 mm
*1"		25 mm
1-1/4"		30 mm
1-3/8"		35 mm
1-1/2"		40 mm
1-3/4"		45 mm
2"		50 mm
2-1/4"		60 mm
2-3/4"		70 mm
3"		80 mm
3-1/2"		90 mm
4"		100 mm

*EXAMPLE: For most applications a 3/8" x 1" cap screw and nut can be replaced by a 10 mm x 25 mm cap screw and nut.

For additional size information and possible substitutions, either inch to metric or metric to inch, please refer to the conversion table in this catalog.

CONVERSION CHART

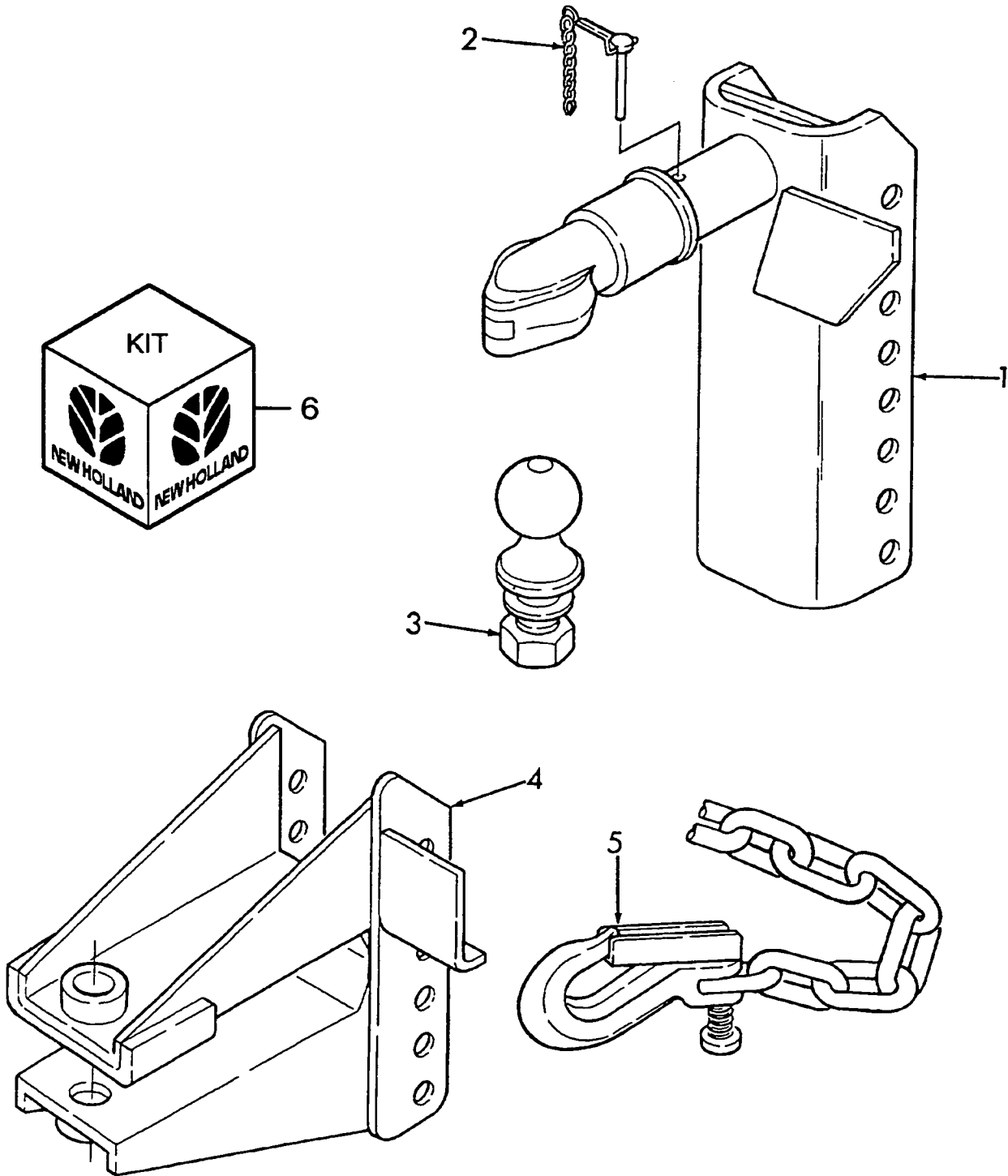
Inch Fractions and Decimals to Millimeter Equivalents											
INCHES		MM	INCHES		MM	INCHES		MM	INCHES		MM
Fraction	Decimal		Fraction	Decimal		Fraction	Decimal		Fraction	Decimal	
-	.0004	.01	-	.3	7.620	-	.7874	20	-	1.969	50
-	.001	.025	-	.3125	7.938	51/64	.7969	20.241	2	2.000	50.8
-	.0039	.10	-	.3150	8	13/16	.8125	20.638	2-1/8	2.125	54
-	.005	.127	21/64	.3281	8.334	-	.8268	21	-	2.165	55
-	.0079	.2	-	.3346	8.5	53/64	.8281	21.034	2-1/4	2.250	57.2
-	.0098	.25	11/32	.3438	8.731	27/32	.8438	21.431	-	2.362	60
-	.01	.254	-	.3543	9	55/64	.8594	21.828	2-3/8	2.375	60.3
-	.0118	.3	23/64	.3594	9.128	-	.8662	22	2-1/2	2.500	63.5
1/64	.0156	.397	-	.3740	9.5	7/8	.8750	22.225	-	2.559	65
-	.0157	.4	3/8	.375	9.525	57/64	.8906	22.622	2-5/8	2.625	66.7
-	.0197	.5	25/64	.3906	9.922	-	.9	22.860	2-3/4	2.750	69.9
-	.0236	.6	-	.3937	10	-	.9055	23	-	2.756	70
-	.025	.635	-	.4	10.160	29/32	.9063	23.019	2-7/8	2.875	73
-	.0276	.7	13/32	.4062	10.319	59/64	.9219	23.416	-	2.953	75
-	.0295	.75	-	.4134	10.5	15/16	.9375	23.813	3	3.000	76.2
1/32	.0313	.794	27/64	.4219	10.716	-	.9449	24	-	3.150	80
-	.0315	.8	-	.4331	11	61/64	.9531	24.209	3-1/4	3.250	82.6
-	.0354	.9	7/16	.4375	11.113	31/32	.9688	24.606	-	3.346	85
-	.0394	1	29/64	.4531	11.509	-	.9843	25	3-1/2	3.500	88.9
3/64	.0469	1.191	15/32	.4688	11.906	1	1.000	25.400	-	3.543	90
-	.0472	1.20	-	.4724	12	-	1.024	26	-	3.740	95
-	.05	1.270	31/64	.4844	12.303	1-1/16	1.062	26.988	3-3/4	3.750	95.3
-	.0551	1.4	-	.4921	12.5	-	1.063	27	-	3.937	100
-	.0591	1.50	1/2	.5	12.700	-	1.102	28	4	4.000	101.6
1/16	.0625	1.588	-	.5118	13	1-1/8	1.125	28.575	-	4.331	110
-	.0669	1.70	33/64	.5156	13.097	-	1.142	29	4-1/2	4.500	114.3
-	.075	1.905	7/32	.5326	13.494	-	1.181	30	-	4.724	120
5/64	.0781	1.984	-	.5315	13.5	1-3/16	1.188	30.16	5	5.000	127
-	.0787	2	35/64	.5469	13.891	-	1.221	31	-	5.118	130
-	.0906	2.3	-	.5512	14	1-1/4	1.250	31.75	5-1/2	5.500	139.7
3/32	.0938	2.381	9/16	.5625	14.288	-	1.260	32	-	5.512	140
-	.0984	2.5	-	.571	14.5	-	1.299	33	-	5.906	150
-	.1	2.540	37/64	.5781	14.684	1-5/16	1.312	33.34	6	6.000	152.4
-	.1024	2.6	-	.5906	15	-	1.339	34	-	6.299	160
7/64	.1093	2.776	19/32	.5938	15.081	1-3/8	1.375	34.93	6-1/2	6.500	165.1
-	.1181	3	-	.6	15.240	-	1.378	35	7	7.000	177.8
1/8	.125	3.175	39/64	.6094	15.478	-	1.417	36	-	7.087	180
-	.1378	3.5	-	.6103	15.5	1-7/16	1.438	36.51	7-1/2	7.500	190.5
9/64	.1406	3.572	5/8	.6250	15.875	-	1.457	37	-	7.874	200
5/32	.1563	3.969	-	.6299	16	-	1.496	38	8	8.000	203.2
-	.1575	4	41/64	.6406	16.272	1-1/2	1.500	38.10	8-1/2	8.500	215.9
11/64	.1719	4.366	-	.6496	16.5	-	1.535	39	-	8.661	220
-	.1772	4.5	21/32	.6563	16.669	1-9/16	1.562	39.69	9	9.000	228.6
3/16	.1875	4.763	-	.6693	17	-	1.575	40	-	9.449	240
-	.1969	5	43/64	.6719	17.066	-	1.614	41	9-1/2	9.500	241.3
-	.2	5.080	11/16	.6875	17.463	1-5/8	1.625	41.28	-	9.843	250
13/64	.2031	5.159	-	.6890	17.5	-	1.654	42	10	10.000	254
-	.2165	5.5	-	.7	17.780	1-11/16	1.688	42.86	-	10.236	260
7/32	.2188	5.556	45/64	.7031	17.859	-	1.693	43	11	11.000	279.4
15/64	.2344	5.963	-	.7087	18	-	1.732	44	-	11.024	280
-	.2362	6	23/32	.7188	18.256	1-3/4	1.750	44.45	-	11.811	300
1/4	.25	6.350	-	.7283	18.5	-	1.772	45	12	12.000	304.8
-	.2559	6.5	47/64	.7344	18.653	-	1.811	46	13	13.000	330.2
17/64	.2656	6.747	-	.7480	19	1-13/16	1.813	46.04	-	13.780	350
-	.2756	7	3/4	.75	19.050	-	1.850	47	14	14.000	355.6
9/32	.2813	7.144	49/64	.7656	19.447	1-7/8	1.875	47.63	15	15.000	381
-	.2953	7.5	-	.7677	19.5	-	1.890	48	-	15.748	400
19/64	.2969	7.541	25/32	.7813	19.844	-	1.929	49	16	16.000	406.4

001

p1

09/99

HITCH GROUP



HITCH GROUP

REF	FN	PART NUMBER	YR/SN	QTY	DESCRIPTION
1		849055		1	Ball Hitch Weld Assy., Includes: Decals & Ref. 2
		859046		1	Decal - Caution
		859047		1	Decal - Attention
		128868		4	Spacer
		120091		4	Screw, Cap, HH, CL8.8, M16 x 60mm
		130358		8	Washer
2		688952		1	Pin & Chain
3		{714290}		1	Trailer Ball Assy., Includes: Attaching Hardware
		88457		1	Washer, Lock, 1-1/4"
		280490		1	Nut Hex, 1-1/4" UNF
4		849052		1	Clevis Hitch Weld Assy.
		128868		4	Spacer
		120091		4	Screw, Cap, HH, CL8.8, M16 x 60mm
		130358		8	Washer
5		854993		1	Chain, Safety Tow
		855228		1	Kit, Hardware, Chain, Safety
6	1	{805439}		AR	Kit, Hitch, Ball
6	1	{805438}		AR	Kit, Hitch, Clevis

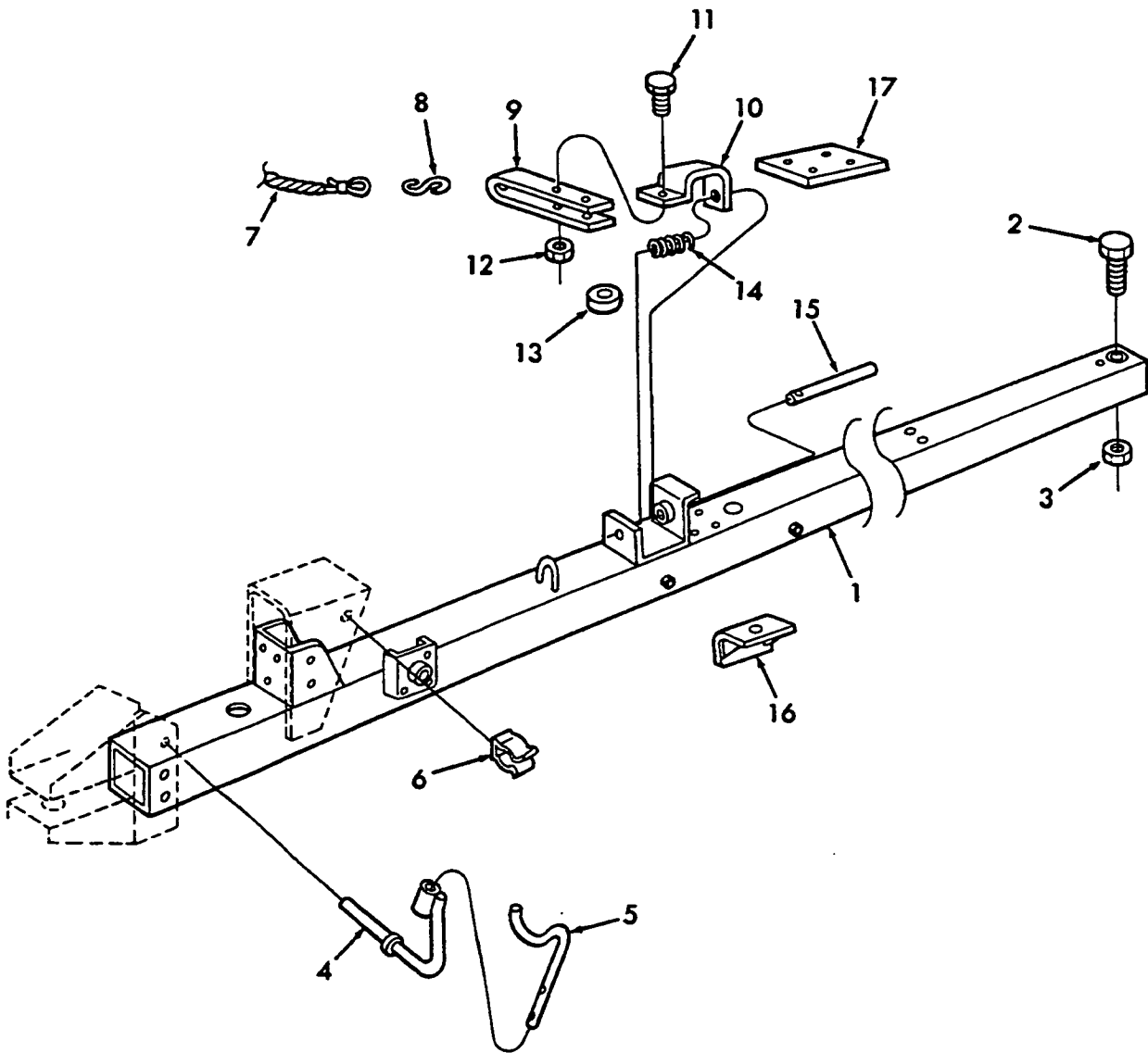
(1) Order From Wholegoods

002

p1

10/99

TONGUE



002

p1

10/99

TONGUE

REF	FN	PART NUMBER	YR/SN	QTY	DESCRIPTION
1		849039		1	Tongue Weld Assy.
2		381523		1	Screw, Cap, HH, CL8.8, M20 x 210mm
3		380424		1	Nut, Lock, M20
4		849035		1	Support Weld Assy.
		87365		1	Washer, 5/8", SAE
		80755		1	Pin, Cotter, 1/8" x 1"
5		849038		1	Hook
		80777		1	Pin, Groove, A, 5/32" x 1-1/4"
		87365		2	Washer, 5/8", SAE
		80755		1	Pin, Cotter, 1/8" x 1"
6		163902		1	Spring, Clip
		120100		1	Screw, Cap, HH, M6 x 20mm
		9707580		1	Screw, Cap, HH, G5, .25 x .75"
		322357		1	Washer, Lock, M6
		87365		3	Washer, .62"
		9706755		1	Nut, Hex, M6
		7770		1	Nut, G5, .25"
7		175707		1	Rope
8		34455		1	S-Hookz
9		226245		1	Latch
10		226244		1	Bracket
11		43130		1	Screw, Cap, HH, CL8.8 M8 x 50mm
		9636711		1	Screw, Cap, HH, G5, .31 x 2.00"
12		43442		1	Nut, Lock, M8
		280736		1	Nut, Lock, .31"..Replaces 87382
13		228127		1	Spacer
		120106		1	Screw, Cap, HH, M8 x 40mm
		9636711		1	Screw, Cap, HH, G5, .31 x 20.."
		43442		1	Nut, Lock, M8
		280736		1	Nut, Lock, .31"..Replaces 87382
14		26392		1	Spring
15		851968		1	Pin, Latch
16		67619		1	Clip
		9706687		1	Screw, Cap, HH, 8.8P, M12 x 30
		9707516		1	Screw, Cap, HH, G5, 1/2" x 1-3/4"

580

002

p2

10/99

TONGUE

