

1 9 9 6

SERVICE MANUAL

TALON

BACKUP

ENGINE, CHASSIS & BODY

Volume — 1

Partial BACKUP Service Manual

TALON

1996

Volume-1
Engine,
Chassis & Body

FOREWORD

This Service Manual has been prepared with the latest service information available at the time of publication. It is subdivided into various group categories and each section contains diagnostic, disassembly, repair, and installation procedures along with complete specifications and tightening references. Use of this manual will aid in properly performing any servicing necessary to maintain or restore the high levels of performance and reliability designed into these outstanding vehicles.

This BACKUP DSM manual is to be used ONLY as a BACKUP. Please DO NOT REDISTRIBUTE WHOLE SECTIONS. This BACKUP was sold to you under the fact that you do indeed OWN a GENUINE DSM MANUAL. It CANNOT BE considered a REPLACEMENT (Unless your original manual was lost or destroyed.)

Please See README.TXT or README.HTML for additional information.

Thank you. Gimmiemymanual@hotmail.com

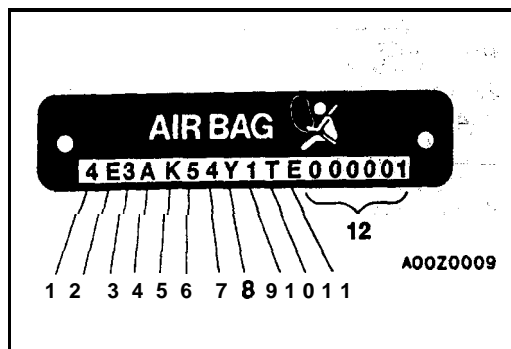
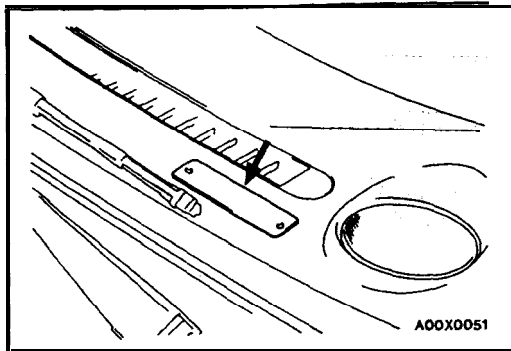


Chrysler Motors Corporation reserves the right to make changes in design or to make additions to or improvements in its products without imposing any obligations upon itself to install them on its products previously manufactured.

GROUP INDEX

Introduction	
Lubrication and Maintenance	0
Front Suspension	2
Rear Axle	3
Brakes - Service Parking	5
Clutch	6
Cooling	7
Engine	9
Intake and Exhaust	11
Fuel System	14
Propeller Shaft and Universal Joints	16
Rear Suspension	17
Steering	19
Transaxle - Manual Automatic	21
Wheels and Tires	22
Body and Supplemental Restraint System (SRS)	23
Heaters and Air Conditioning	24
Emission Control Systems	25

NOTE:
For Electrical, refer to
Volume-2 "Electrical"



VEHICLE IDENTIFICATION

VEHICLE IDENTIFICATION NUMBER LOCATION

The vehicle identification number (V.I.N) is located on a plate attached to the left top side of the instrument panel.

VEHICLE IDENTIFICATION CODE CHART PLATE

All vehicle identification numbers contain 17 digits. The vehicle number is a code which tells country, make, vehicle type, etc.

No.	Items	Contents
1	Country	4: USA
2	Make	E: EAGLE
3	Vehicle type	3: Passenger car
4	Others	A: Drive and passenger air bags
5	Line	K: TALON <FWD> L: TALON <AWD>
6	Price class	4: High 5: Premium
7	Body	4: 3-door hatchback
8	Engine	Y: 2.0dm ³ (122.0cu.in.) [DOHC-MFI] F: 2.0dm ³ (122.0cu.in.) [DOHC-MFI-Turbo]
9	Check digits*	1 2 3 4 5 6 7 8 9 X
10	Model year	T: 1996
11	Plant	E: DSM plant
12	Serial number	000001 to 999999

NOTE

* "Check digit" means a single number or letter X used to verify the accuracy of transcription of Vehicle identification number.

VEHICLE IDENTIFICATION NUMBER LIST

VEHICLES FOR FEDERAL

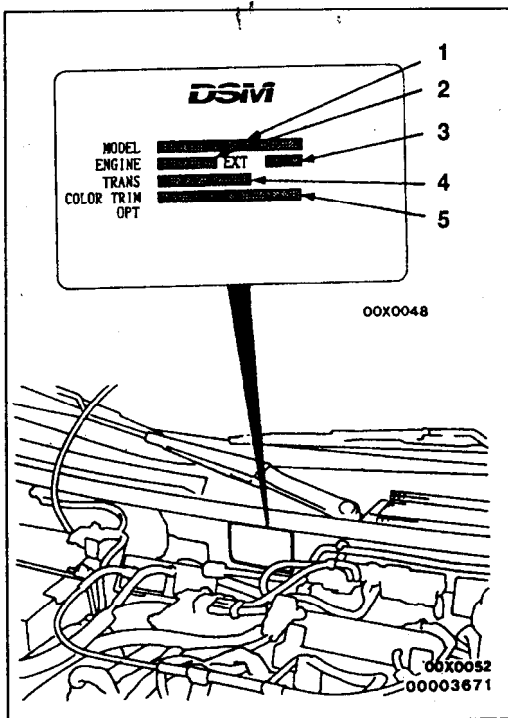
V.I.N. (except sequence number)	Brand	Engine displacement	Model code
4E3AK44Y*TE	Eagle Talon <FWD>	2.0 dm ³ (122.0 cu.in.) [DOHC-MFI (420A)]	D31AMNHML4E
			D31AMRHML4E
4E3AK54F*TE	Eagle Talon <FWD>	2.0 dm ³ (122.0 cu.in.) [DOHC-MFI-Turbo (4G63)]	D32AMNGFL4E
			D32AMRGFL4E
4E3AL54F*TE	Eagle Talon <AWD>		D33AMNGFL4E
			D33AMRGFL4E

VEHICLES FOR CALIFORNIA

V.I.N. (except sequence number)	Brand	Engine Displacement	Model code
4E3AK44Y*TE	Eagle Talon <FWD>	2.0 dm ³ (122.0 cu.in.) [DOHC-MFI (420A)]	D31AMNHML9E
			D31AMRHML9E
4E3AK54F*TE	Eagle Talon <FWD>	2.0 dm ³ (122.0 cu.in.) [DOHC-MFI-Turbo (4G63)]	D32AMNGFL9E
			D32AMRGFL9E
4E3AL54F*TE	Eagle Talon <AWD>		D33AMNGFL9E
			D33AMRGFL9E

VEHICLES FOR CANADA

V.I.N. (except sequence number)	Brand	Engine Displacement	Model code
4E3AK44Y*TE	Eagle Talon <FWD>	2.0 dm ³ (122.0 cu.in.) [DOHC-MFI (420A)]	D31 AMNHML5E
			D31 AMRHML5E
4E3AK54F*TE	Eagle Talon <FWD>	2.0 dm ³ (122.0 cu.in.) [DOHC-MFI-Turbo (4G63)]	D32AMNGFL5E
			D32AMRGFL5E
4E3AL54F*TE	Eagle Talon <AWD>		D33AMNGFL5E
			D33AMRGFL5E

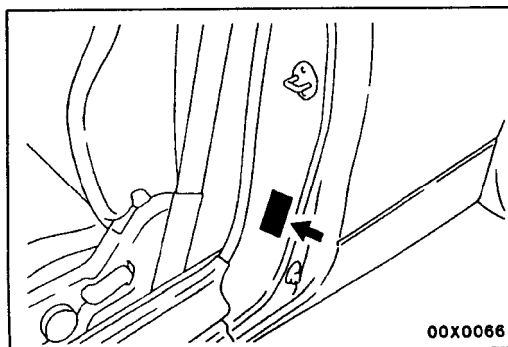


VEHICLE INFORMATION CODE PLATE

Vehicle information code plate is riveted onto the bulkhead in the engine compartment.

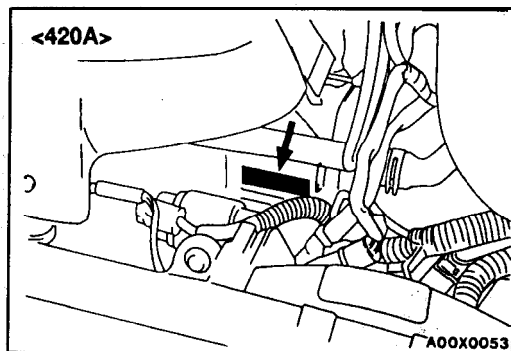
The plate shows model code, engine model, transaxle model, and body color code.

No.	Item	Contents	
1	MODEL	D32AM	D32AM: Vehicle model
			RGFL4E: Model series
2	ENGINE	4G643	Engine model
3	EXT	CA6A	Exterior code
4	TRANS	F4A33	Transaxle code
5	COLOR TRIM OPT	R25 87V 03V	R25: Body color code
			87V: Interior code
			03V: Equipment code



VEHICLE SAFETY CERTIFICATION LABEL

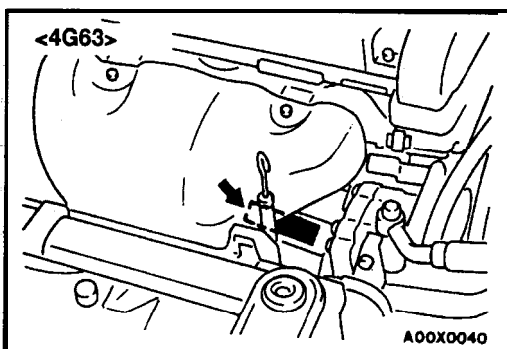
1. The vehicle safety certification label is attached to face of left door pillar.
2. This label indicates Gross Vehicle Weight Rating (G.V.W.R.), Gross Axle Weight Rating (G.A.W.R.) front, rear and Vehicle Identification Number (V.I.N.).



ENGINE MODEL STAMPING

1. The engine model number is stamped at the front side on the top edge of the cylinder block as shown in the following.

Engine model	Engine displacement
420A	2.0 dm ³ (122.0 cu.in.)
4G63	2.0 dm ³ (122.0 cu.in.)



2. The 4G63 or 420A engine serial number is stamped near the engine model number, and the serial number cycles, as shown below.

Engine serial number	AA0201 to YY9999
----------------------	------------------

Theft protection label

For original parts



For replacement parts



00A0213
00000222

THEFT PROTECTION

In order to protect against theft, a Vehicle Identification Number (VIN) is stamped in, or attached as a label to, the following -major parts of the engine and transaxle, as well as main outer panels:

Engine cylinder block, Transaxle housing, Fender, Door, Quarter panel, Hood, Liftgate, Bumpers

In addition, a theft-protection label is attached to replacement parts for the body outer panel main components, and the same data are stamped into replacement parts for the engine and the transaxle.

Cautions regarding panel repairs:

1. When repainting original parts, do so after first masking the theft-protection label, and, after painting, be sure to peel off the masking tape.
2. The theft-protection label for replacement parts is covered by masking tape, so such parts can be painted as is. The masking tape should be removed after painting is finished.
3. The theft-protection label should not be removed from original parts or replacement parts.