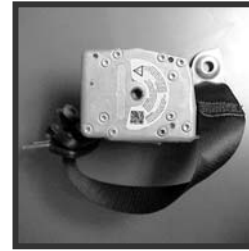




Mercedes-Benz



I. Airbag



II. ETR



III. Control Module



VIII. Non-SRS  
Safety

# Occupant Safety Systems



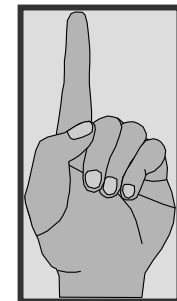
IV. Deployment Logic



VII. Other SRS  
Outputs



VI. Testing



V. Safety

These technical training materials are current as of the date noted on the materials, and may be revised or updated without notice. Always check for revised or updated information.

To help avoid personal injury to you or others, and to avoid damage to the vehicle on which you are working, you must always refer to the latest Mercedes- Benz Technical Publication and follow all pertinent instructions when testing, diagnosing or making repair.

*Copyright Mercedes- Benz USA, LLC, 2002*

*Reproduction by any means or by any information storage and retrieval system or translation in whole or part is not permitted without written authorization from Mercedes- Benz USA, LLC or its successors.*

*Published by Mercedes- Benz USA, LLC*

*Printed in U. S.A.*

# I. Airbag (AB)

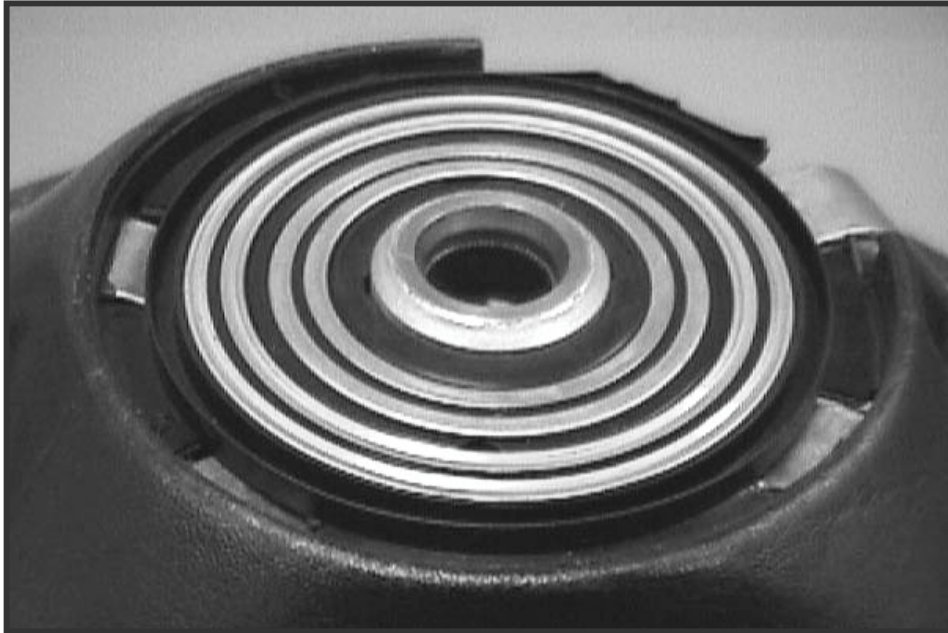


# Airbag Types



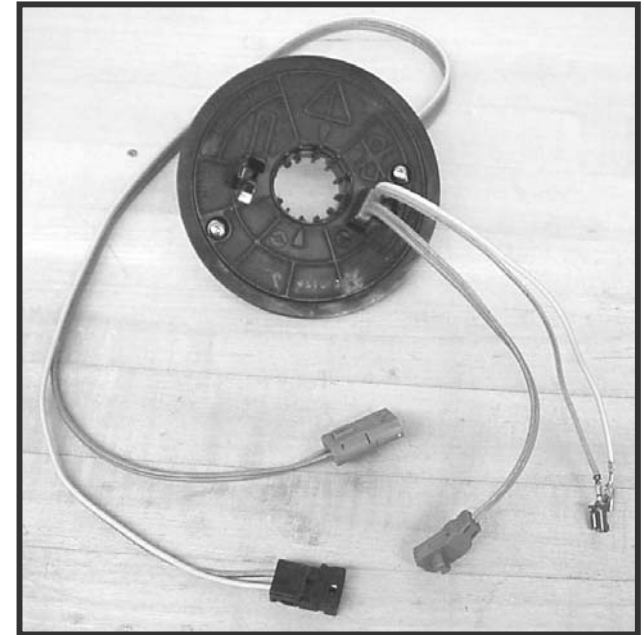
# Slip Rings vs. Clock Spring Contacts for Horn and Driver's Airbag

X28/5



1984 through 1993 model years

A45



Phased in during  
Model Year 1993