

VIN PLATE DECODING INFORMATION

1	2	3	4	5	6	7	8	9	10	11	12 thru 17
WMI	WMI	WMI	Other	Model	Model	Engine, Brake	Engine, Brake	Check Digit	Model Year	Assy. Plant	Sequence No.

The following table interprets the VIN Plate position shown above.

Position	Interpretation	Codes = Description
1	World Manufacturer Identification	W = DaimlerChrysler AG
2	World Manufacturer Identification	D = Sprinter
3	World Manufacturer Identification	1 = Sprinter Chassis-Cab 2 = Sprinter Truck 5 = Sprinter Multipurpose Passenger Vehicle
4	Chassis Configuration	B = 4X4 - Canada P = 4X2 - U.S.
5	Model, Wheelbase, GVWR	D = Combine with position 6
6	Model, Wheelbase, GVWR	1 = 2500C/C2500/P2500 3000 mm 15 in. wheel 8,001 - 9,000 lbs. Class G 2 = 2500C/C2500/P2500 3550 mm 15 in. wheel 8,001 - 9,000 lbs. Class G 3 = 2500C/C2500/P2500 4025 mm 15 in. wheel 8,001 - 9,000 lbs. Class G 4 = 3500C/C3500 3550 mm 15 in. wheel 9,001 - 10,000 lbs. Class H 5 = 3500C/C3500 4025 mm 15 in. wheel 9,001 - 10,000 lbs. Class H 6 = 2500C/C2500/P2500 3567 mm 16in. wheel 8,001 - 9,000 lbs. Class G 7 = 2500C/C2500/P2500 4042 mm 16in. wheel 8,001 - 9,000 lbs. Class G
7	Engine, Brake	4 = Combine with position 8
8	Engine, Brake	3 = 2.7L 45 State Diesel, Hydraulic Brakes 4 = 2.7L 50 State Diesel, Hydraulic Brakes
9	Check Digit	0 = Check Digit 0 = Check Digit 0 = Check Digit
10	Model Year	4 = 2004 5 = 2005
11	Assembly Plant	5 = Dusseldorf
12 thru 17	Vehicle Build Sequence	Model Year Assembly Sequence

Group - 2

Front Suspension & Drive

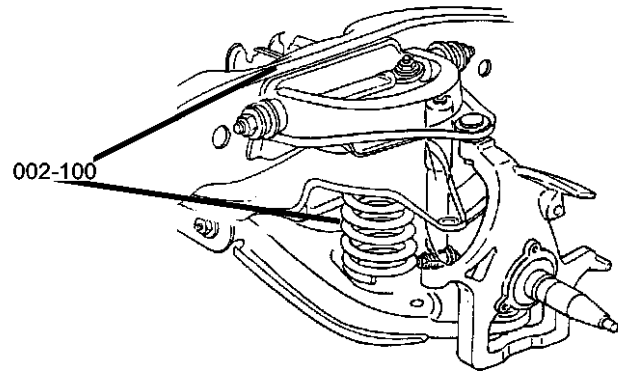
Group - 2 Front Suspension & Drive

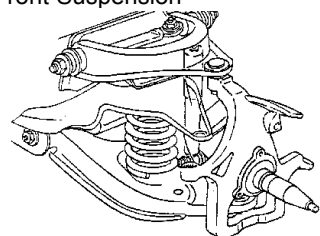
Illustration Title

Group-Fig. No.

Front Suspension

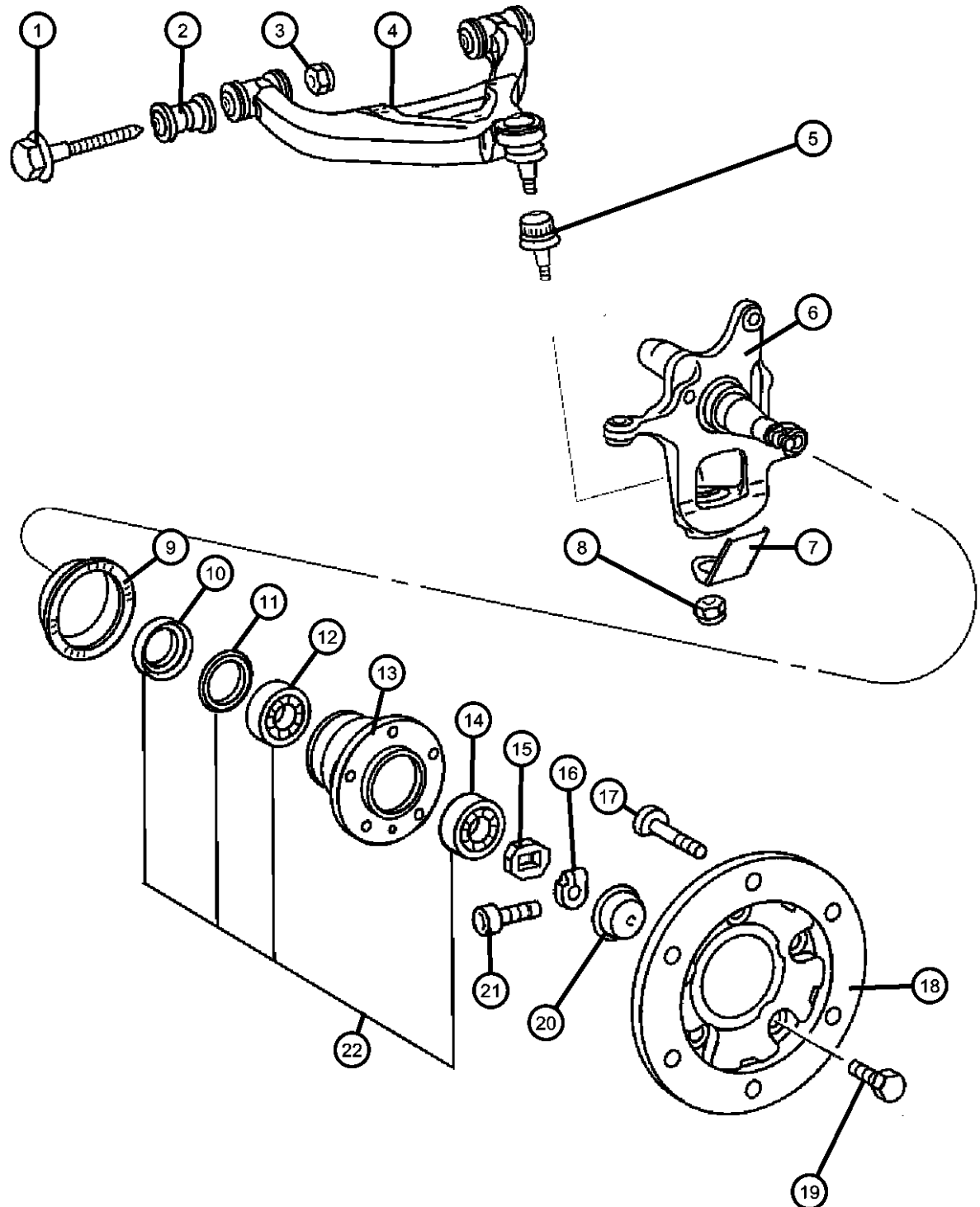
Front Control Arms, Knuckles, Bearings and Hubs.....	Fig. 2 - 110
Front Shocks	Fig. 2 - 120
Front Stabilzer Bar	Fig. 2 - 130
Front Spring	Fig. 2 - 140



<p>002-100 Front Suspension</p> 			
---	--	--	--

Front Control Arms, Knuckles, Bearings and Hubs

Figure 2-110



ITEM	PART NUMBER	QTY	LINE	SERIES	BODY	ENGINE	TRANS	TRIM	DESCRIPTION
------	-------------	-----	------	--------	------	--------	-------	------	-------------

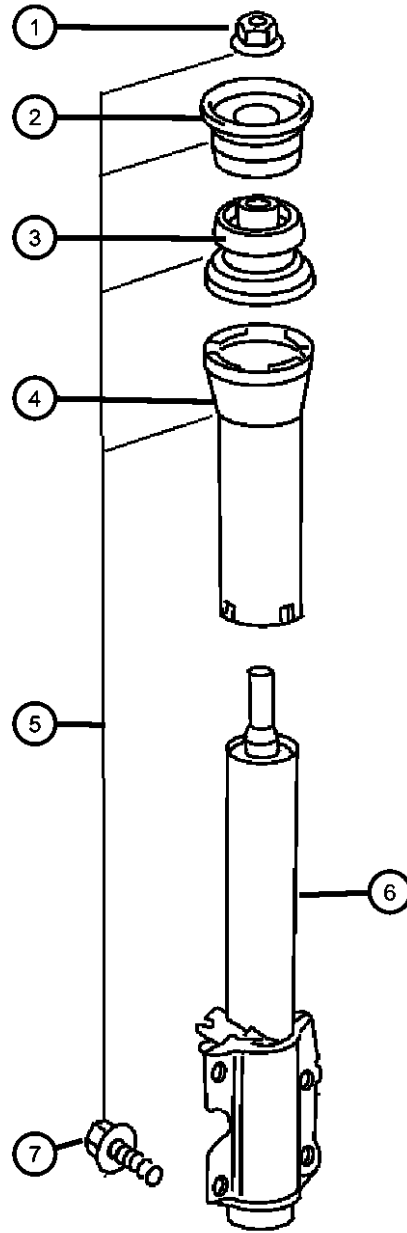
Note: Sales Codes
 Note: On Up To and From parts, you will have to refer to the Vehicle Data Card.
 [DGJ]=TRANSMISSION - 5-SPD AUTO, W5A3
 [BGK]= 4-WHEEL ANTI-LOCK

1	05133819AA	4							BOLT, Hex Head
2	05133818AA	2	2, 3, 6, 7						BUSHING, Control Arm
3									NUT
	06104719AA	2	2, 6	L	51, 52, 54, 55, 56				
		2	3, 7	L	12, 15, 16				
		2	2, 6	L	01, 02, 06				
		2	2, 6	L	11, 12, 14, 15, 16				
4									ARM, Lower Control, Front
	05104578AA	1	2, 3, 6, 7						Left
	05136057AA	1	2, 3, 6, 7						Right
	05137552AA	1	2, 3, 6, 7	L					Right
	05137632AA	1	2, 3, 6, 7	L					Left
5	05139559AA	2							BALL JOINT, Lower Control Arm
6									KNUCKLE, Front
	05135233AA	1	2, 6	L	51, 52, 54, 55, 56				Left
	05104579AA	1	3, 7						For Wabco and Bosch Calipers, Left
	05135232AA	1	2, 6	L	11, 12, 14, 15, 16				Right
		1	2, 6	L	51, 52, 54, 55, 56				Right
		1	2, 6	L	01, 02, 06				Right
		1	3, 7	L	02, 06				With Special Version [504032 / 10], Right
		1	2, 6	L	11, 12, 14, 15, 16				Left
		1	2, 6	L	01, 02, 06				Left

SPRINTER (VA)	SERIES	LINE	BODY	ENGINE	TRANSMISSION
L = LOWLINE		3 = HD DODGE 2WD 6 = Lt. Duty DODGE 4WD 2 = Med. Duty DODGE 2WD 7 = Med. Duty DODGE 4WD	55 = Wagon 140" 54 = Wagon 118" 52 = Wagon 140" 51 = Wagon 118" 12 = Van 140" 11 = Van 118" 06 = Front Section 158" 14 = Van 118" 15 = Van 140" 16 = Van 158" 56 = Wagon 158"	EX8 = Engine-2.7L I5 Mercedes Turbo Diesel	DGJ = Transmission-5-Spd. Automatic, W5A580

AR = use ase required - = Non illustrated part

Front Shocks
Figure 2-120



ITEM	PART NUMBER	QTY	LINE	SERIES	BODY	ENGINE	TRANS	TRIM	DESCRIPTION
------	-------------	-----	------	--------	------	--------	-------	------	-------------

Note: Sales Codes:
[SHA]=Stabilizer Bar - Front
[3AT]=Rear Springs Weight 3.88T

1	05125762AA	2	2, 6	L	01, 02, 06				NUT
		2	2, 6	L	11, 12, 14, 15, 16				
		2	2, 6	L	51, 52, 54, 55, 56				
		2	3, 7	L	12, 15, 16				
2	05118718AA	2	2, 6	L	01, 02, 06				BUSHING, Shock Absorber
		2	2, 6	L	11, 12, 14, 15, 16				
		2	2, 6	L	51, 52, 54, 55, 56				
		2	3, 7	L	12, 15, 16				
3	05118722AA	2	2, 6	L	01, 02, 06				BUSHING, Shock Absorber
		2	2, 6	L	11, 12, 14, 15, 16				
		2	2, 6	L	51, 52, 54, 55, 56				
		2	3, 7	L	12, 15, 16				
4	05118728AA	2	2, 6	L	01, 02, 06				SHIELD, Shock Absorber Dust
		2	2, 6	L	11, 12, 14, 15, 16				
		2	2, 6	L	51, 52, 54, 55, 56				
		2	3, 7	L	02, 06				
		2	3, 7	L	12, 15, 16				
5	05133869AA	2	2, 6	L	01, 02, 06				PARTS KIT, Shock

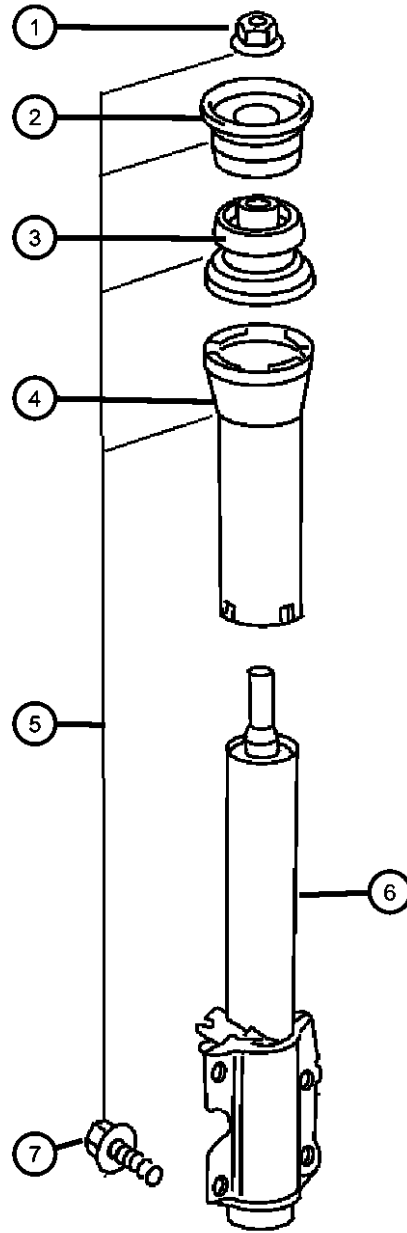
SPRINTER (VA)

SERIES	LINE	BODY	ENGINE	TRANSMISSION
L = LOWLINE	3 = HD DODGE 2WD 6 = Lt. Duty DODGE 4WD 2 = Med. Duty DODGE 2WD 7 = Med. Duty DODGE 4WD	55 = Wagon 140" 54 = Wagon 118" 52 = Wagon 140" 51 = Wagon 118" 12 = Van 140" 11 = Van 118" 06 = Front Section 158" 14 = Van 118" 15 = Van 140" 16 = Van 158" 56 = Wagon 158"	EX8 = Engine-2.7L I5 Mercedes Turbo Diesel	DGJ = Transmission-5-Spd. Automatic, W5A580
		01 = Chassis Forward Control 118" 02 = Chassis Forward Control 140"		

AR = use ase required - = Non illustrated part

2004 VA

Front Shocks
Figure 2-120



ITEM	PART NUMBER	QTY	LINE	SERIES	BODY	ENGINE	TRANS	TRIM	DESCRIPTION
		2	2, 6	L	11, 12, 14, 15, 16				Includes Items 1,2,3,4,7
		2	2, 6	L	51, 52, 54, 55, 56				Includes Items 1,2,3,4,7
		2	3, 7	L	12, 15, 16				Includes Items 1,2,3,4,7
6									ABSORBER, Shock
	05104063AA	2	2, 6	L					Shock Only
	05128502AA	1	3, 7	L	12, 15, 16				Shock Only
	05139548AA	2	2, 6						Shock Only [3AT,SHA]
7	05125699AA	8							SCREW, Strut to Knuckle, Mounting

SPRINTER (VA)

SERIES

L = LOWLINE

LINE

3 = HD DODGE 2WD
6 = Lt. Duty DODGE 4WD
2 = Med. Duty DODGE 2WD
7 = Med. Duty DODGE 4WD

BODY

55 = Wagon 140"
54 = Wagon 118"
52 = Wagon 140"
51 = Wagon 118"
12 = Van 140"
11 = Van 118"
06 = Front Section 158"
14 = Van 118"
15 = Van 140"
16 = Van 158"
56 = Wagon 158"
01 = Chassis Forward Control 118"
02 = Chassis Forward Control 140"

ENGINE

EX8 = Engine-2.7L I5
Mercedes Turbo Diesel

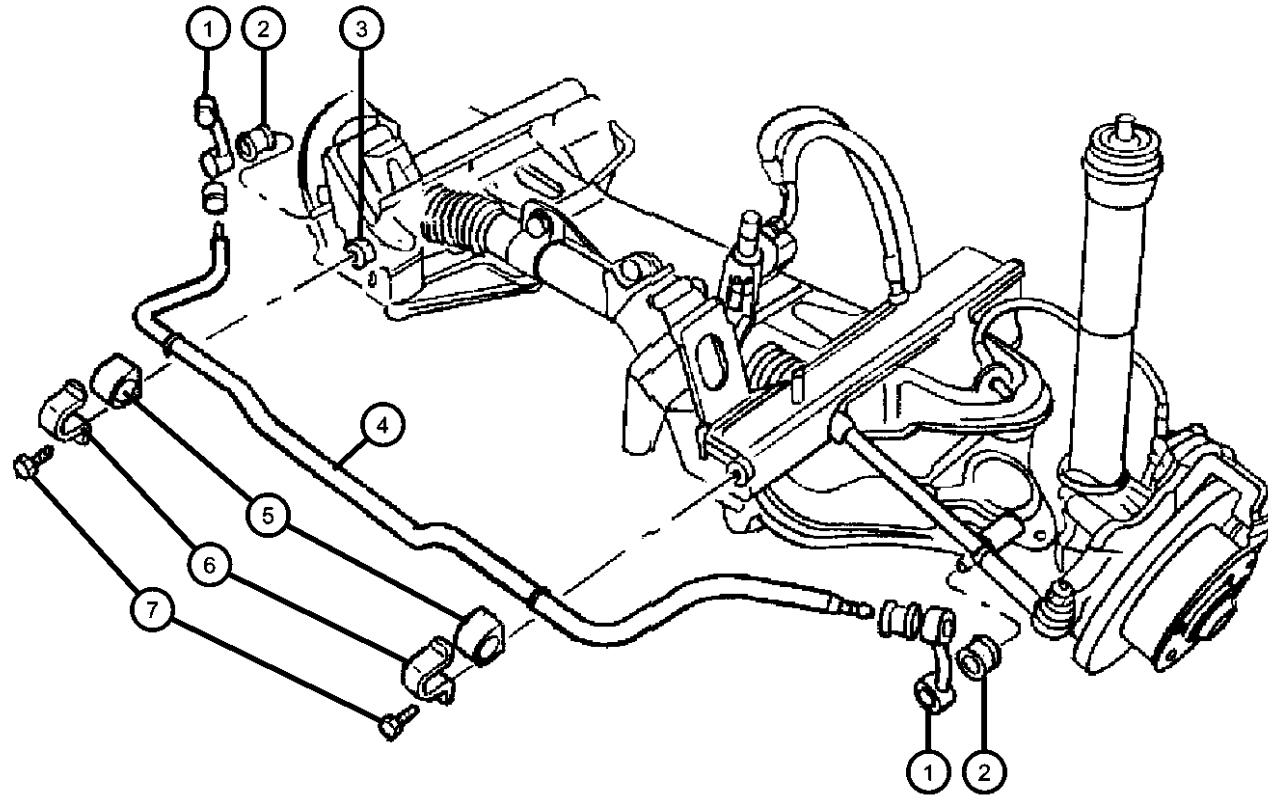
TRANSMISSION

DGJ = Transmission-5-Spd. Automatic, W5A580

AR = use ase required - = Non illustrated part

2004 VA

Front Stabilizer Bar
Figure 2-130



ITEM	PART NUMBER	QTY	LINE	SERIES	BODY	ENGINE	TRANS	TRIM	DESCRIPTION
1									LINK, Stabilizer Bar
	05104059AA	1	2, 6	L	01, 02, 06				Left
		1	2, 6	L	11, 12, 14, 15, 16				Left
		1	2, 6	L	51, 52, 54, 55, 56				Left
	05104060AA	1	2, 6	L	01, 02, 06				Right
		1	2, 6	L	11, 12, 14, 15, 16				Right
		1	2, 6	L	51, 52, 54, 55, 56				Right
2									BUSHING
	05104066AA	4	2, 6	L	01, 02, 06				Torsion Bar to Control Arm
		4	2, 6	L	11, 12, 14, 15, 16				Torsion Bar to Control Arm
		4	2, 6	L	51, 52, 54, 55, 56				Torsion Bar to Control Arm
3									NUT
	05104677AA	2	2, 6	L	01, 02, 06				
		2	2, 6	L	11, 12, 14, 15, 16				
		2	2, 6	L	51, 52, 54, 55, 56				
4									BAR, Front Sway
	05104576AA	1	2, 6	L	01, 02, 06				
		1	2, 6	L	11, 12, 14, 15, 16				
		1	2, 6	L	51, 52, 54, 55, 56				
5									BUSHING, Stabilizer Bar
	05104577AA	2	2, 6	L	01, 02, 06				Torsion Bar to Front Axle
		2	2, 6	L	11, 12, 14, 15, 16				Torsion Bar to Front Axle
		2	2, 6	L	51, 52, 54, 55, 56				Torsion Bar to Front Axle

SPRINTER (VA)

SERIES

L = LOWLINE

LINE

3 = HD DODGE 2WD
6 = Lt. Duty DODGE 4WD
2 = Med. Duty DODGE 2WD
7 = Med. Duty DODGE 4WD

BODY

55 = Wagon 140"
54 = Wagon 118"
52 = Wagon 140"
51 = Wagon 118"
12 = Van 140"
11 = Van 118"
06 = Front Section 158"
14 = Van 118"
15 = Van 140"
16 = Van 158"
56 = Wagon 158"
01 = Chassis Forward Control 118"
02 = Chassis Forward Control 140"

ENGINE

EX8 = Engine-2.7L I5
Mercedes Turbo Diesel

TRANSMISSION

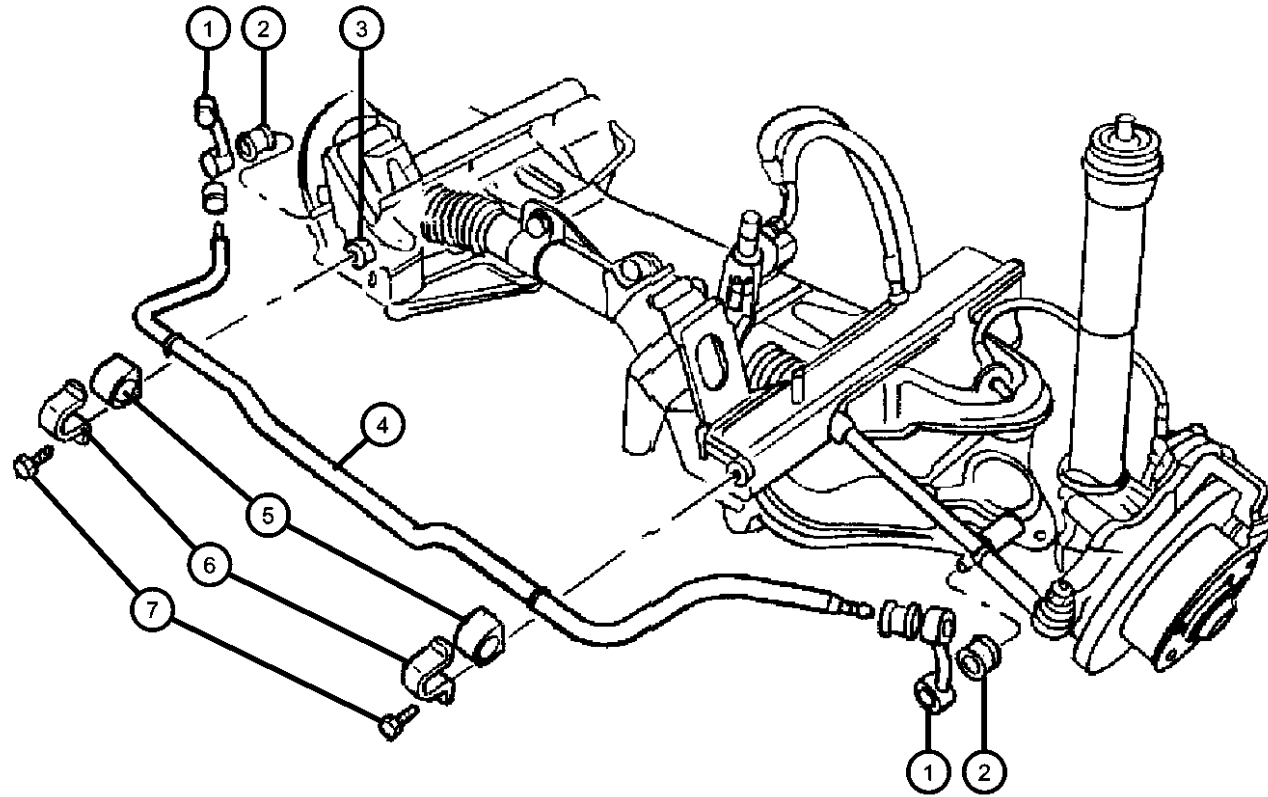
DGJ = Transmission-5-Spd. Automatic, W5A580

AR = use ase required - = Non illustrated part

2004 VA

Front Stabilizer Bar
Figure 2-130

ITEM	PART NUMBER	QTY	LINE	SERIES	BODY	ENGINE	TRANS	TRIM	DESCRIPTION
6									RETAINER, Stabilizer Bar Grommet
	05104067AA	2	2, 6	L	01, 02, 06				
		2	2, 6	L	11, 12, 14, 15, 16				
		2	2, 6	L	51, 52, 54, 55, 56				
7									BOLT
	05104656AA	2	2, 6	L	01, 02, 06				
		2	2, 6	L	11, 12, 14, 15, 16				
		2	2, 6	L	51, 52, 54, 55, 56				

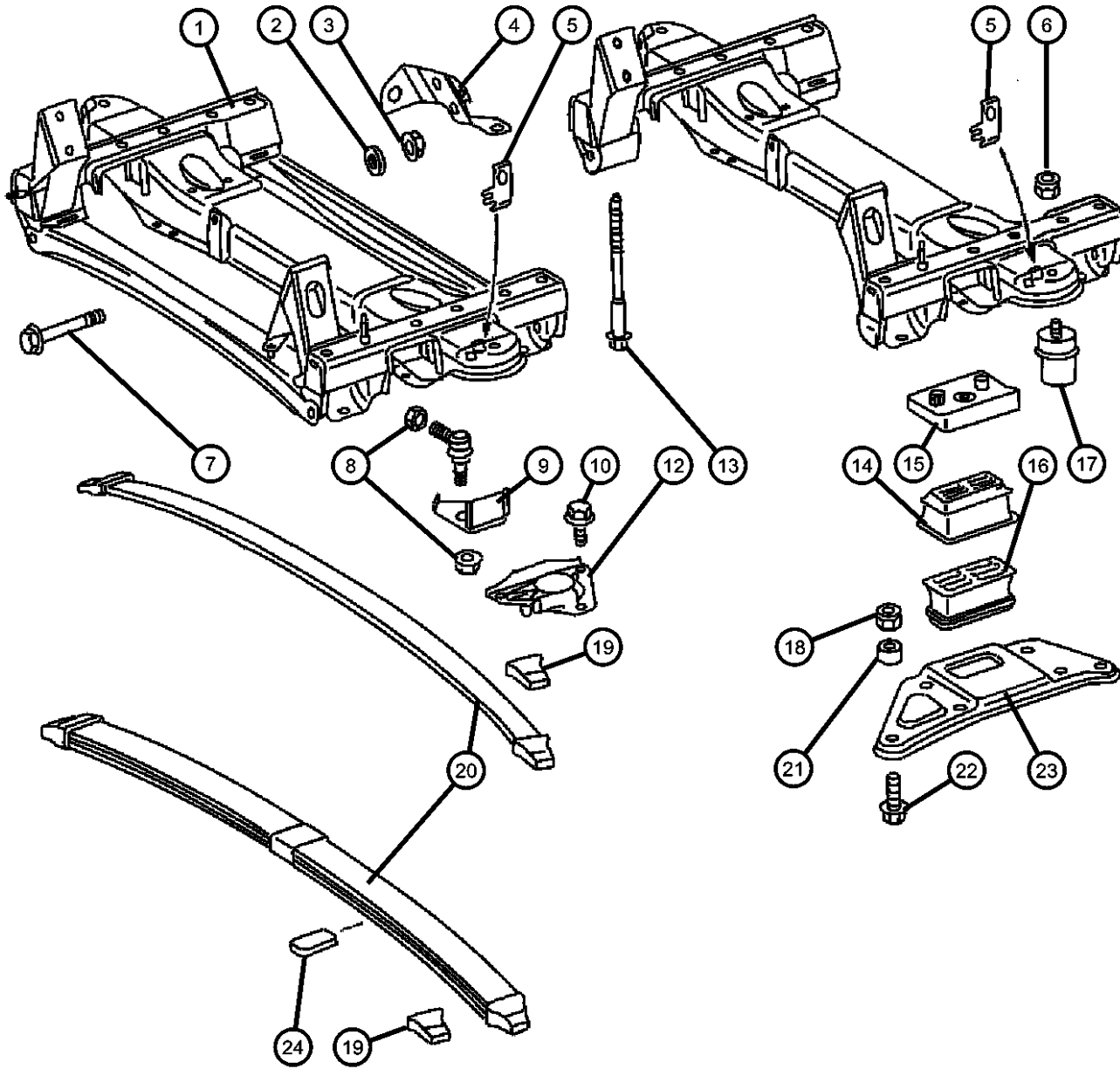


SPRINTER (VA)

SERIES	LINE	BODY	ENGINE	TRANSMISSION
L = LOWLINE	3 = HD DODGE 2WD 6 = Lt. Duty DODGE 4WD 2 = Med. Duty DODGE 2WD 7 = Med. Duty DODGE 4WD	55 = Wagon 140" 54 = Wagon 118" 52 = Wagon 140" 51 = Wagon 118" 12 = Van 140" 11 = Van 118" 06 = Front Section 158" 14 = Van 118" 15 = Van 140" 16 = Van 158" 56 = Wagon 158"	EX8 = Engine-2.7L I5 Mercedes Turbo Diesel	DGJ = Transmission-5-Spd. Automatic,W5A580
		01 = Chassis Forward Control 118" 02 = Chassis Forward Control 140"		

AR = use ase required - = Non illustrated part

Front Spring
Figure 2-140



ITEM	PART NUMBER	QTY	LINE	SERIES	BODY	ENGINE	TRANS	TRIM	DESCRIPTION
1	05139740AA	1							CROSSMEMBER, Front Axle
	05104074AA	1	2, 6						WASHER, (NOT SERVICED)
2	05104074AA	1							NUT
3	06104718AA	2	2, 6	L	01, 02, 06				
		2	2, 6	L	11, 12, 14, 15, 16				
		2	2, 6	L	51, 52, 54, 55, 56				
4	05119553AA	1							BRACKET, Steering Gear
5	05119553AA	1							BRACKET, (NOT SERVICED)
6	05132896AA	6	2, 6	L	11, 12, 14, 15, 16				NUT
		6	2, 6	L	51, 52, 54, 55, 56				
7	05125714AA	4							SCREW
8	05125761AA	2	2, 6	L	01, 02, 06				NUT
		2	2, 6	L	51, 52, 54, 55, 56				
	05132896AA	6	2, 6	L	11, 12, 14, 15, 16				
		6	2, 6	L	51, 52, 54, 55, 56				
		2	2, 6	L	11, 12, 14, 15, 16				
9	05119249AA	2	2, 6	L	51, 52, 54, 55, 56				PLATE, Backing

SPRINTER (VA)

SERIES

L = LOWLINE

LINE

3 = HD DODGE 2WD
6 = Lt. Duty DODGE 4WD
2 = Med. Duty DODGE 2WD
7 = Med. Duty DODGE 4WD

BODY

55 = Wagon 140"
54 = Wagon 118"
52 = Wagon 140"
51 = Wagon 118"
12 = Van 140"
11 = Van 118"
06 = Front Section 158"
14 = Van 118"
15 = Van 140"
16 = Van 158"
56 = Wagon 158"
01 = Chassis Forward Control 118"
02 = Chassis Forward Control 140"

ENGINE

EX8 = Engine-2.7L I5
Mercedes Turbo Diesel

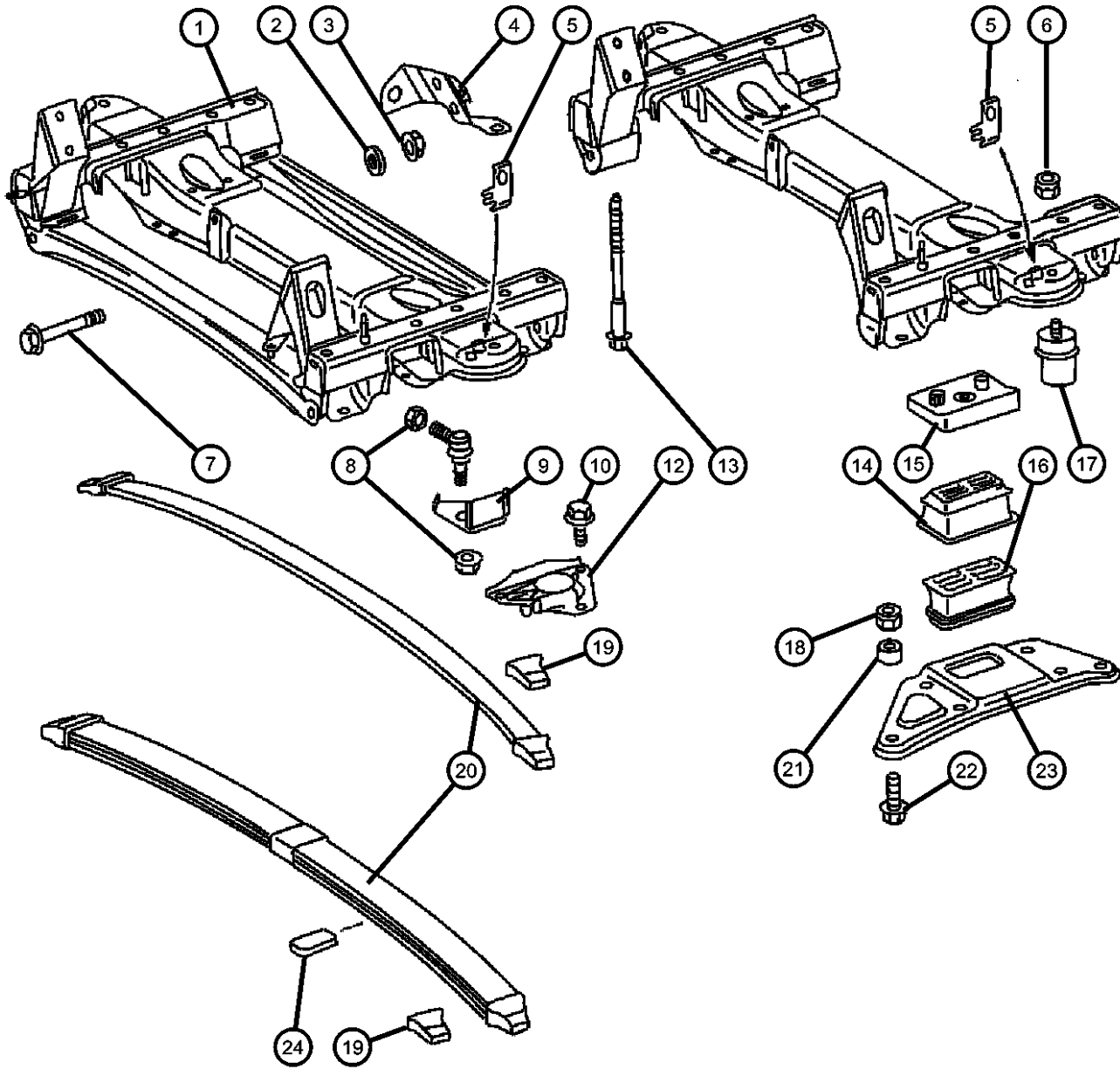
TRANSMISSION

DGJ = Transmission-5-Spd. Automatic, W5A580

AR = use ase required - = Non illustrated part

2004 VA

Front Spring
Figure 2-140



ITEM	PART NUMBER	QTY	LINE	SERIES	BODY	ENGINE	TRANS	TRIM	DESCRIPTION
		2	2, 6	L	01, 02, 06				
		2	2, 6	L	11, 12, 14, 15, 16				
10	05126233AA	6	2, 6	L	51, 52, 54, 55, 56				BOLT Without [WDG]
		6	2, 6	L	01, 02, 06				Without [WDG]
		6	2, 6	L	11, 12, 14, 15, 16				Without [WDG]
	06104049AA	6	2, 6	L	11, 12, 14, 15, 16				With [WDG]
		6	2, 6	L	51, 52, 54, 55, 56				With [WDG]
-11	05132896AA	6	2, 6	L	11, 12, 14, 15, 16				NUT For Item 10-With [WDG] Only
		6	2, 6	L	51, 52, 54, 55, 56				For Item 10-With [WDG] Only
12	05104064AA	1	2, 6	L	01, 02, 06				PLATE, Stabilizer Bar Right
		1	2, 6	L	11, 12, 14, 15, 16				Right
		1	2, 6	L	51, 52, 54, 55, 56				Right
	05118707AA	1	2, 6	L	11, 12, 14, 15, 16				Left
		1	2, 6	L	51, 52, 54, 55, 56				Left
	05118705AA	2	3, 7						Right or Left
		1	2, 6	L	01, 02, 06				Left
13	05125725AA	8	2, 6	L	01, 02, 06				SCREW AND WASHER, Hex
		8	2, 6	L	11, 12, 14, 15, 16				

SPRINTER (VA)

SERIES

L = LOWLINE
 3 = HD DODGE 2WD
 6 = Lt. Duty DODGE 4WD
 2 = Med. Duty DODGE 2WD
 7 = Med. Duty DODGE 4WD

LINE

BODY

55 = Wagon 140"
 54 = Wagon 118"
 52 = Wagon 140"
 51 = Wagon 118"
 12 = Van 140"
 11 = Van 118"
 06 = Front Section 158"
 14 = Van 118"
 15 = Van 140"
 16 = Van 158"
 56 = Wagon 158"
 01 = Chassis Forward Control 118"
 02 = Chassis Forward Control 140"

ENGINE

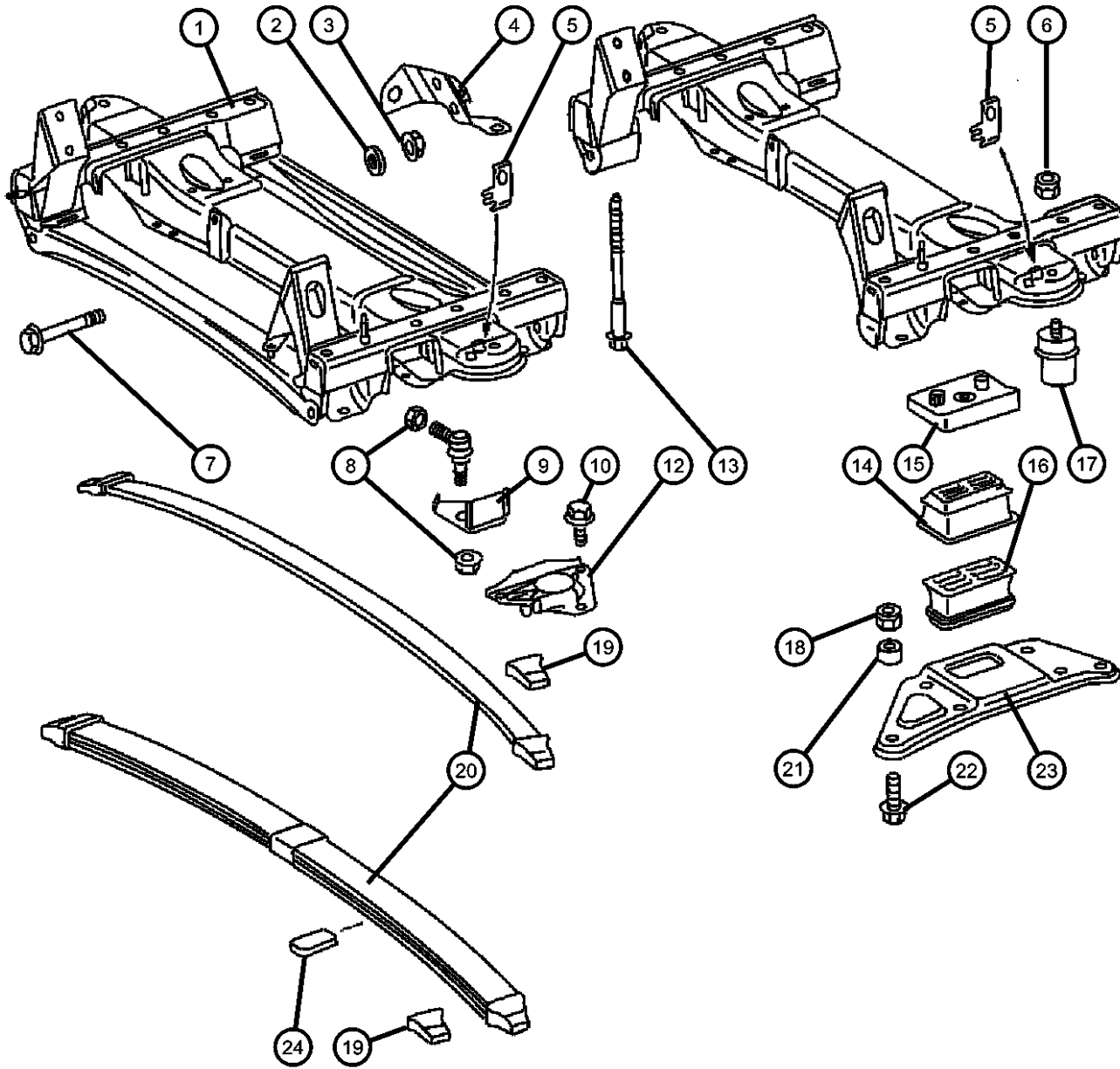
EX8 = Engine-2.7L I5
 Mercedes Turbo Diesel

TRANSMISSION

DGJ = Transmission-5-Spd. Automatic, W5A580

AR = use ase required - = Non illustrated part

Front Spring
Figure 2-140



ITEM	PART NUMBER	QTY	LINE	SERIES	BODY	ENGINE	TRANS	TRIM	DESCRIPTION
		8	2, 6	L	51, 52, 54, 55, 56				
14	05139558AA	2							SEAT, Spring To Frame With SV#500323/02
	05139190AA	2							To Frame With SV#500323/03
15	05139554AA	1							SHIM, Spring Seat Right
	05139552AA	1							Left
16	05139188AA	1							SEAT, Spring Left
	05139189AA	1							Right
17	05139555AA	2							BUMPER, Suspension Jounce
18	06104717AA	8	2, 6	L	01, 02, 06				NUT M10 x 1.5
		2	2, 6	L	11, 12, 14, 15, 16				M10 x 1.5
		2	2, 6	L	51, 52, 54, 55, 56				M10 x 1.5
		1	3, 7	L	12, 15, 16				M10 x 1.5
	06104718AA	2	2, 6	L	01, 02, 06				M12 x 1.5
		2	2, 6	L	11, 12, 14, 15, 16				M12 x 1.5
		2	2, 6	L	51, 52, 54, 55, 56				M12 x 1.5
		2	3, 7	L	12, 15, 16				M12 x 1.5
19	05139556AA	2							SEAT, Spring
20	05139112AA	1							SPRING, Front Leaf
21	05139737AA	4							BUSHING, Spring
22	06104233AA	4							BOLT, Hex Head, M12 x 1.5 x 25.00
23	05139186AA	1							PLATE, Suspension Left

SPRINTER (VA)

SERIES

L = LOWLINE

LINE

3 = HD DODGE 2WD
6 = Lt. Duty DODGE 4WD
2 = Med. Duty DODGE 2WD
7 = Med. Duty DODGE 4WD

BODY

55 = Wagon 140"
54 = Wagon 118"
52 = Wagon 140"
51 = Wagon 118"
12 = Van 140"
11 = Van 118"
06 = Front Section 158"
14 = Van 118"
15 = Van 140"
16 = Van 158"
56 = Wagon 158"
01 = Chassis Forward Control
118"
02 = Chassis Forward Control
140"

ENGINE

EX8 = Engine-2.7L I5
Mercedes Turbo Diesel

TRANSMISSION

DGJ = Transmission-5-Spd.
Automatic,W5A580

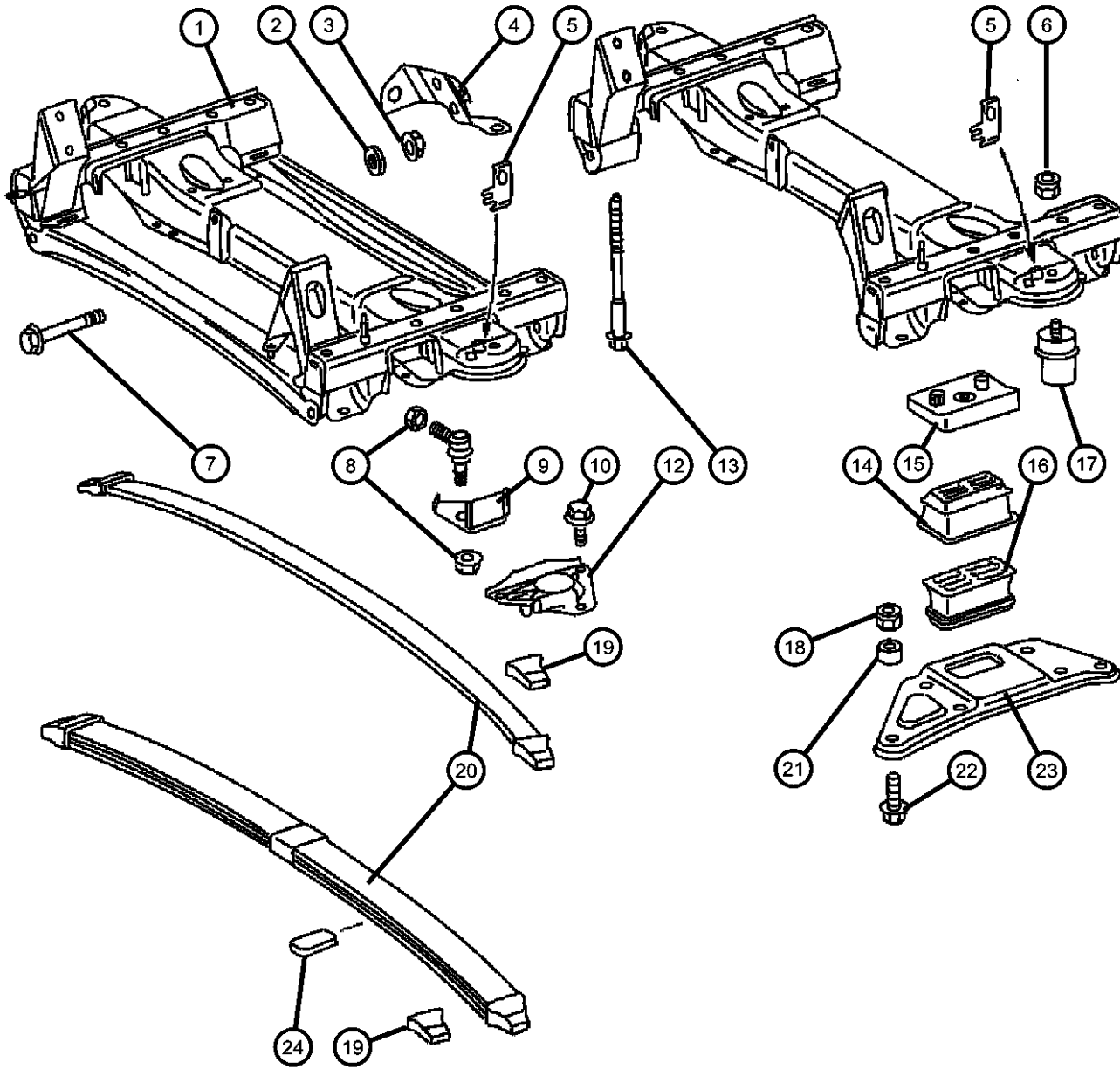
AR = use ase required - = Non illustrated part

2004 VA

Front Spring
Figure 2-140

ITEM	PART NUMBER	QTY	LINE	SERIES	BODY	ENGINE	TRANS	TRIM	DESCRIPTION
------	-------------	-----	------	--------	------	--------	-------	------	-------------

	05139187AA	1							Right
24	05139187AA	1							SHIM, (NOT SERVICED)



SPRINTER (VA)

SERIES	LINE	BODY	ENGINE	TRANSMISSION
L = LOWLINE	3 = HD DODGE 2WD 6 = Lt. Duty DODGE 4WD 2 = Med. Duty DODGE 2WD 7 = Med. Duty DODGE 4WD	55 = Wagon 140" 54 = Wagon 118" 52 = Wagon 140" 51 = Wagon 118" 12 = Van 140" 11 = Van 118" 06 = Front Section 158" 14 = Van 118" 15 = Van 140" 16 = Van 158" 56 = Wagon 158"	EX8 = Engine-2.7L I5 Mercedes Turbo Diesel	DGJ = Transmission-5-Spd. Automatic,W5A580
		01 = Chassis Forward Control 118" 02 = Chassis Forward Control 140"		

AR = use ase required - = Non illustrated part

Group - 3

Rear Axle

Group - 3 Rear Axle

Group-Fig. No.

Illustration Title

Rear Axle

Differential Assembly,Rear Fig. 3 - 110

Differential and Housing

Internal Differential Parts,Rear Fig. 3 - 210

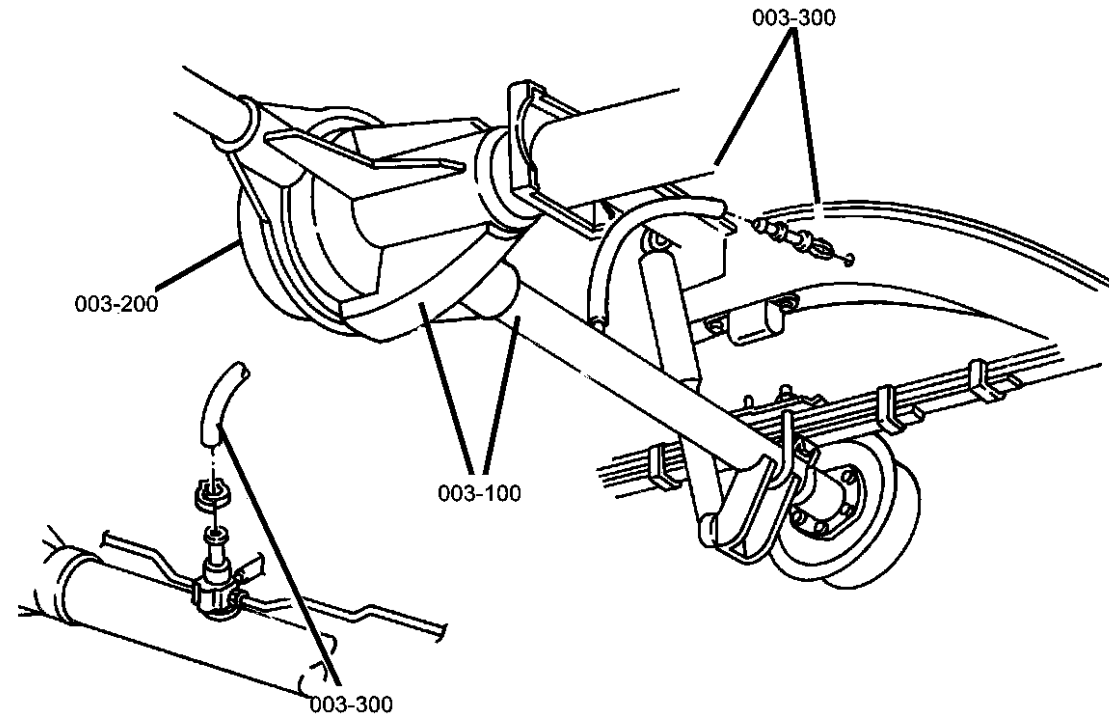
Differential Housing,Rear Fig. 3 - 220

Axle Shaft and Wheel Bearings,Single Rear Wheels Fig. 3 - 230

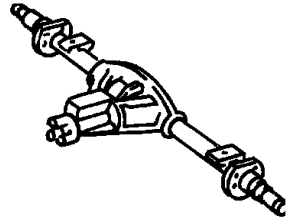
Axle Shaft and Wheel Bearings,Dual Rear Wheels Fig. 3 - 240

Rear Axle Vent

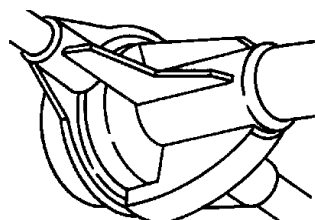
Vent,Rear Axle Fig. 3 - 310



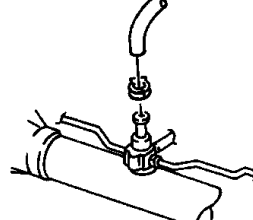
003-100
Rear Axle



003-200
Differential and Housing



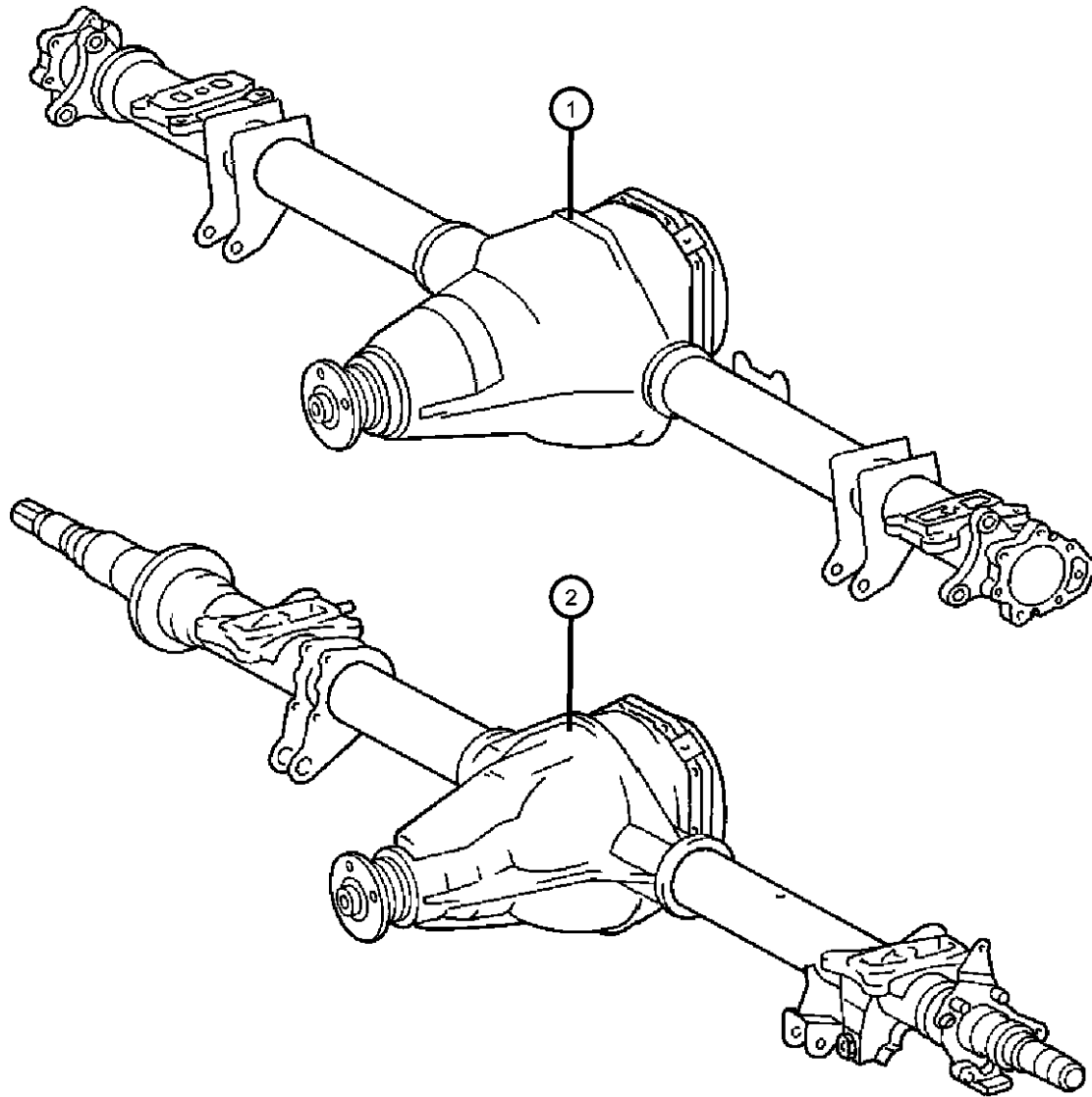
003-300
Rear Axle Vent



Differential Assembly,Rear
Figure 3-110

ITEM	PART NUMBER	QTY	LINE	SERIES	BODY	ENGINE	TRANS	TRIM	DESCRIPTION
------	-------------	-----	------	--------	------	--------	-------	------	-------------

Note: Sales Codes:
DRW means Dual Rear Wheels
SRW means Single Rear Wheels
[DME]=Axle Ratio - 3.72
[DMF]=Axle Ratio - 4.11



1	05137591AA	1	2, 6						AXLE, Service Rear [DMF] SRW
	05136033AA								Mopar SAE 90 Gear Lube Quart for Sprinter Axles
	05137755AA	1	2, 6	L					[DME] SRW
	05136033AA								Mopar SAE 90 Gear Lube Quart for Sprinter Axles
2	05135823AA	1	3, 7	L	12, 15, 16				AXLE, Service Rear [DME] DRW
	05136033AA								Mopar SAE 90 Gear Lube Quart for Sprinter Axles
	05135928AA	1	3, 7	L					[DMF] DRW
	05136033AA								Mopar SAE 90 Gear Lube Quart for Sprinter Axles

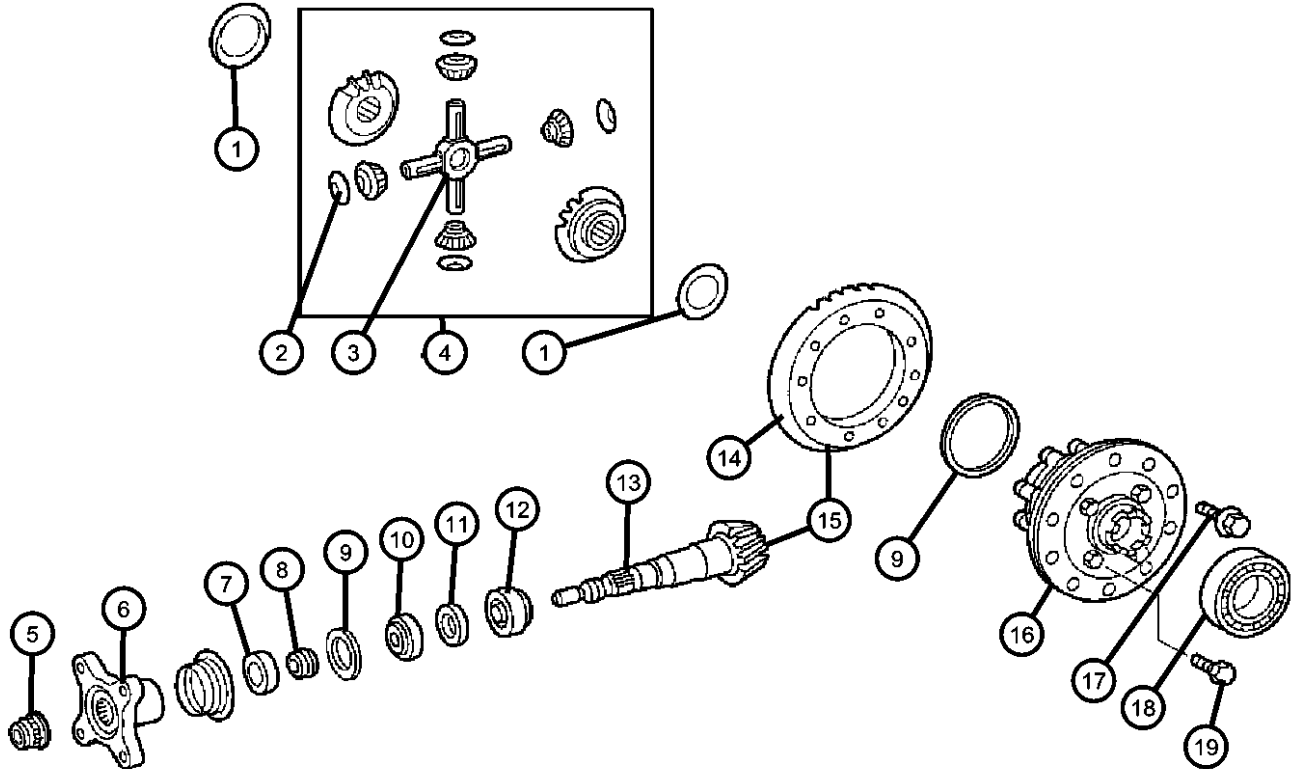
SPRINTER (VA)

SERIES	LINE	BODY	ENGINE	TRANSMISSION
L = LOWLINE	3 = HD DODGE 2WD 6 = Lt. Duty DODGE 4WD 2 = Med. Duty DODGE 2WD 7 = Med. Duty DODGE 4WD	55 = Wagon 140" 54 = Wagon 118" 52 = Wagon 140" 51 = Wagon 118" 12 = Van 140" 11 = Van 118" 06 = Front Section 158" 14 = Van 118" 15 = Van 140" 16 = Van 158" 56 = Wagon 158" 01 = Chassis Forward Control 118" 02 = Chassis Forward Control 140"	EX8 = Engine-2.7L I5 Mercedes Turbo Diesel	DGJ = Transmission-5-Spd. Automatic,W5A580

AR = use ase required - = Non illustrated part

2004 VA

Internal Differential Parts,Rear
Figure 3-210



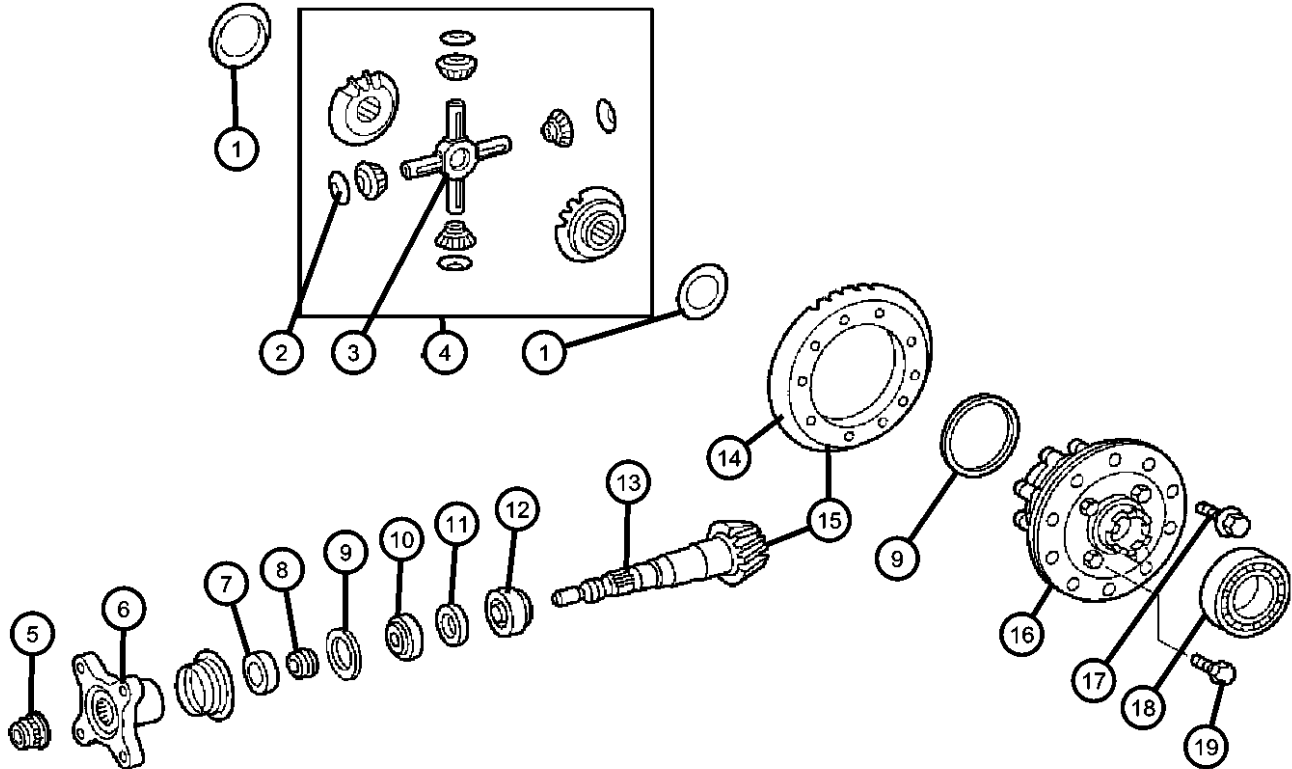
ITEM	PART NUMBER	QTY	LINE	SERIES	BODY	ENGINE	TRANS	TRIM	DESCRIPTION
1									WASHER, Side Gear Thrust
	05136792AA	AR	3, 7	L					1.30 MM Steel
	05136810AA	AR	3, 7	L					1.30 MM Brass
	05136819AA	AR	2, 3, 6, 7	L					1.40 MM Brass
	05136820AA	AR	3, 7	L					1.40 MM Steel
	05136822AA	AR	3, 7	L					1.50 MM Steel
	05136823AA	AR	3, 7	L					1.50 MM Brass
	05136826AA	AR	3, 7	L					1.60 MM Steel
	05136841AA	AR	3, 7	L					1.90 MM Steel
	05136827AA	AR	3, 7	L					1.60 MM Brass
	05136829AA	AR	3, 7	L					1.70 MM Steel
	05136830AA	AR	3, 7	L					1.70 MM Brass
	05136834AA	AR	3, 7	L					1.80 MM Steel
	05136835AA	AR	3, 7	L					1.80 MM Brass
2									WASHER, Pinion Gear
	05136148AA	4	3, 7						
		4	2, 6						
3	05136150AA	1	7, 3						SHAFT, Differential Pinion
4	05137602AA	1	2, 3, 6, 7						GEAR PACKAGE, Differential
5									NUT, Pinion Yoke
	05103957AA	1							Up To Axle L538154 or X004694
	05103958AA	1							From Axle L538155 or X004695
6	05134541AA	1		L					FLANGE, Driveshaft Yoke
7	05103966AA	1		L					RING, Pinion flange
8									SPACER, Drive Pinion Bearing
	05134540AA	1		L					Up To [02/2004]
	68000011AA	1		L					After [02/2004]
9									SHIM, Axle

SPRINTER (VA)

SERIES	LINE	BODY	ENGINE	TRANSMISSION
L = LOWLINE	3 = HD DODGE 2WD 6 = Lt. Duty DODGE 4WD 2 = Med. Duty DODGE 2WD 7 = Med. Duty DODGE 4WD	55 = Wagon 140" 54 = Wagon 118" 52 = Wagon 140" 51 = Wagon 118" 12 = Van 140" 11 = Van 118" 06 = Front Section 158" 14 = Van 118" 15 = Van 140" 16 = Van 158" 56 = Wagon 158"	EX8 = Engine-2.7L I5 Mercedes Turbo Diesel	DGJ = Transmission-5-Spd. Automatic,W5A580
		01 = Chassis Forward Control 118" 02 = Chassis Forward Control 140"		

AR = use ase required - = Non illustrated part

Internal Differential Parts,Rear
Figure 3-210



ITEM	PART NUMBER	QTY	LINE	SERIES	BODY	ENGINE	TRANS	TRIM	DESCRIPTION
	05134415AA	1	2, 3, 6, 7						[4.90 MM]
	05134416AA	1	2, 3, 6, 7						[4.92 MM]
	05134417AA	1	2, 3, 6, 7						[4.94 MM]
	05134418AB	1	2, 3, 6, 7						[4.96 MM]
	05134420AA	1	2, 3, 6, 7						[5.02 MM]
	05134421AA	1	2, 3, 6, 7						[5.04 MM]
	05134422AB	1	2, 3, 6, 7						[5.06 MM]
	05134423AA	1	2, 3, 6, 7						[5.12 MM]
	05134425AA	1	2, 3, 6, 7	L					[5.20 MM]
	05134427AA	1	2, 3, 6, 7	L					[5.24 MM]
	05134419AA	1	2, 3, 6, 7						[5.00 MM]
	05134432AA	1	2, 3, 6, 7	L					[5.50 MM]
	05134433AA	1	2, 3, 6, 7	L					[5.60 MM]
	05134434AA	1	2, 3, 6, 7	L					[5.72 MM]
	05134435AA	1	2, 3, 6, 7	L					[5.76 MM]
	05134436AA	1	2, 3, 6, 7	L					[5.80 MM]
	05134437AA	1	2, 3, 6, 7	L					[5.84 MM]
	05134438AA	1	2, 3, 6, 7	L					[5.88 MM]
	05134439AA	1	2, 3, 6, 7	L					[5.92 MM]
	05134440AA	1	2, 3, 6, 7						[5.96 MM]
	05134428AA	1	2, 3, 6, 7	L					[5.28 MM]
	05134429AA	1	2, 3, 6, 7	L					[5.32 MM]
	05134430AA	1	2, 3, 6, 7	L					[5.36 MM]
	05134431AA	1	2, 3, 6, 7	L					[5.40 MM]
	05134469AA	1	2, 3, 6, 7	L					[6.38 MM]
	05134441AA	1	2, 3, 6, 7	L					[6.00 MM]
	05134466AA	1	2, 3, 6, 7	L					[6.10 MM]
	05134467AA	1	2, 3, 6, 7	L					[6.20 MM]

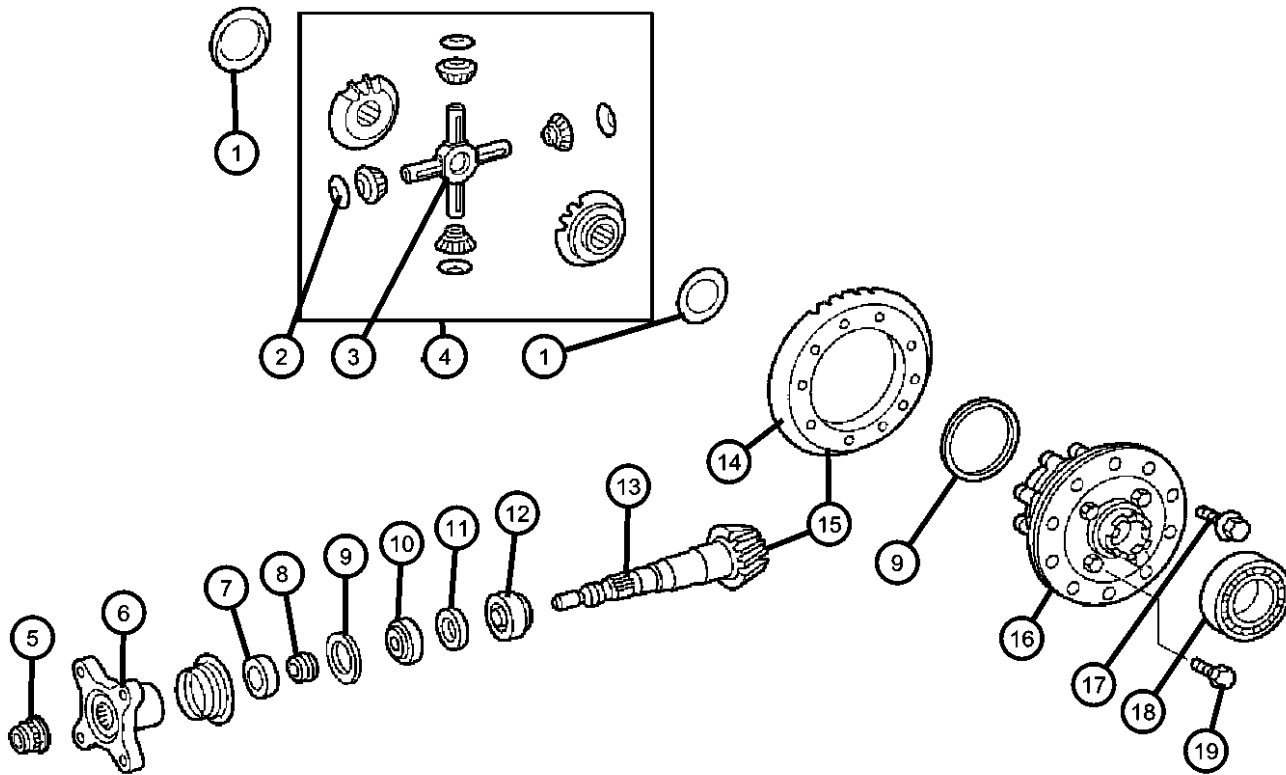
SPRINTER (VA)

SERIES	LINE	BODY	ENGINE	TRANSMISSION
L = LOWLINE	3 = HD DODGE 2WD 6 = Lt. Duty DODGE 4WD 2 = Med. Duty DODGE 2WD 7 = Med. Duty DODGE 4WD	55 = Wagon 140" 54 = Wagon 118" 52 = Wagon 140" 51 = Wagon 118" 12 = Van 140" 11 = Van 118" 06 = Front Section 158" 14 = Van 118" 15 = Van 140" 16 = Van 158" 56 = Wagon 158"	EX8 = Engine-2.7L I5 Mercedes Turbo Diesel	DGJ = Transmission-5-Spd. Automatic,W5A580

AR = use ase required - = Non illustrated part

Internal Differential Parts,Rear
Figure 3-210

ITEM	PART NUMBER	QTY	LINE	SERIES	BODY	ENGINE	TRANS	TRIM	DESCRIPTION
	05134468AB	1	2, 3, 6, 7	L					[6.30 MM]
10	05136772AA	1		L					BEARINGFront
11	05103900AA	1		L					SEAL, Drive Pinion
12	05134442AA	1		L					BEARING, Drive PinionRear
13	05136773AA	1	2, 3, 6, 7	L					PINION, Differential, [DME]
14	05136774AA	1		L					GEAR, Differential Ring, [DME]
15	05136156AA	1	2, 3, 6, 7	L	11, 12, 14, 15, 16				GEAR KIT, Ring And Pinion [DMF]
		1	2, 3, 6, 7	L	51, 52, 54, 55, 56				[DMF]
16	05136172AA	1	3, 7		11, 12, 14, 15, 16				CASE, Differential [DMF]
	05137618AA	1	2, 3, 6, 7						[DME]
17	05103849AA	10	2, 3, 6, 7	L					BOLT, Ring Gear, Mounting
18	05097700AA	1	2, 3, 6, 7						BEARING, Differential
19	05136178AA	8							SCREW, Differential, Differential Case Half, Mounting



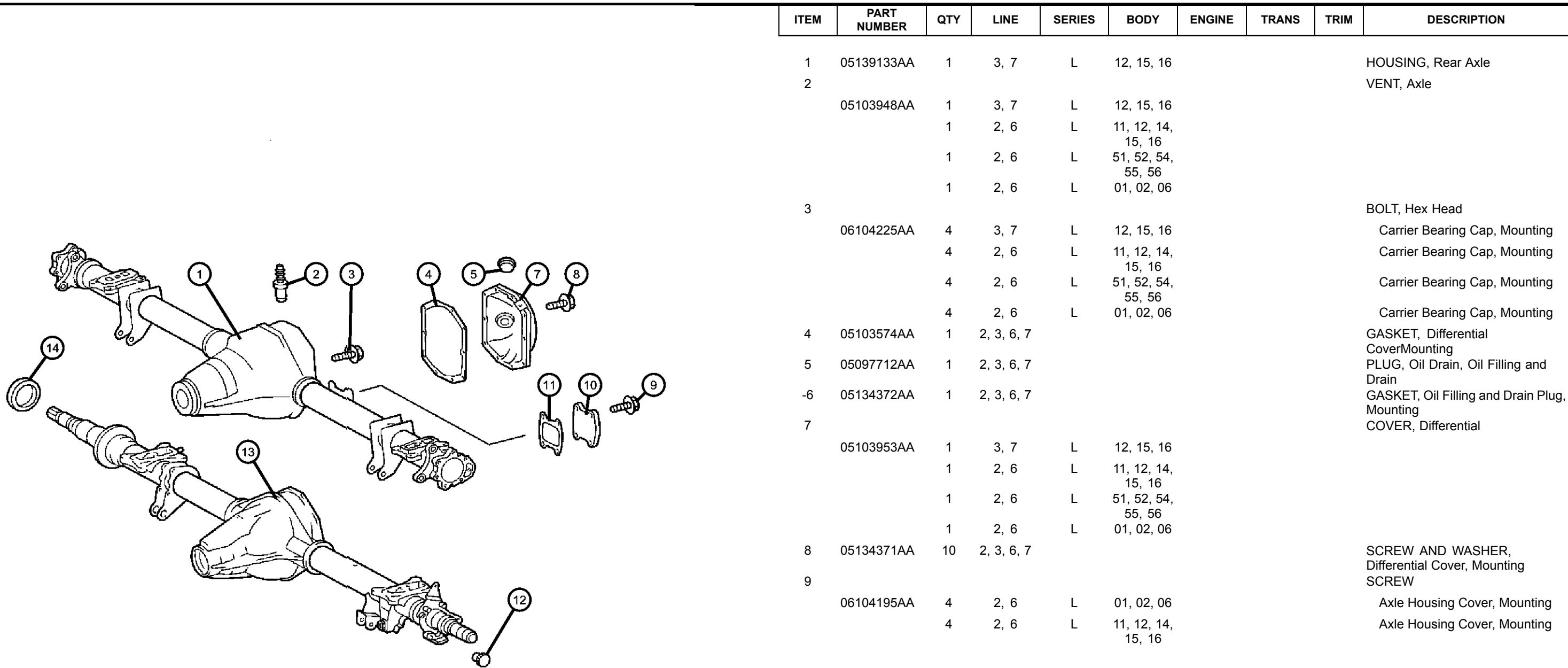
SPRINTER (VA)

SERIES	LINE	BODY	ENGINE	TRANSMISSION
L = LOWLINE	3 = HD DODGE 2WD 6 = Lt. Duty DODGE 4WD 2 = Med. Duty DODGE 2WD 7 = Med. Duty DODGE 4WD	55 = Wagon 140" 54 = Wagon 118" 52 = Wagon 140" 51 = Wagon 118" 12 = Van 140" 11 = Van 118" 06 = Front Section 158" 14 = Van 118" 15 = Van 140" 16 = Van 158" 56 = Wagon 158"	EX8 = Engine-2.7L I5 Mercedes Turbo Diesel	DGJ = Transmission-5-Spd. Automatic,W5A580
		01 = Chassis Forward Control 118" 02 = Chassis Forward Control 140"		

AR = use ase required - = Non illustrated part

2004 VA

**Differential Housing,Rear
Figure 3-220**



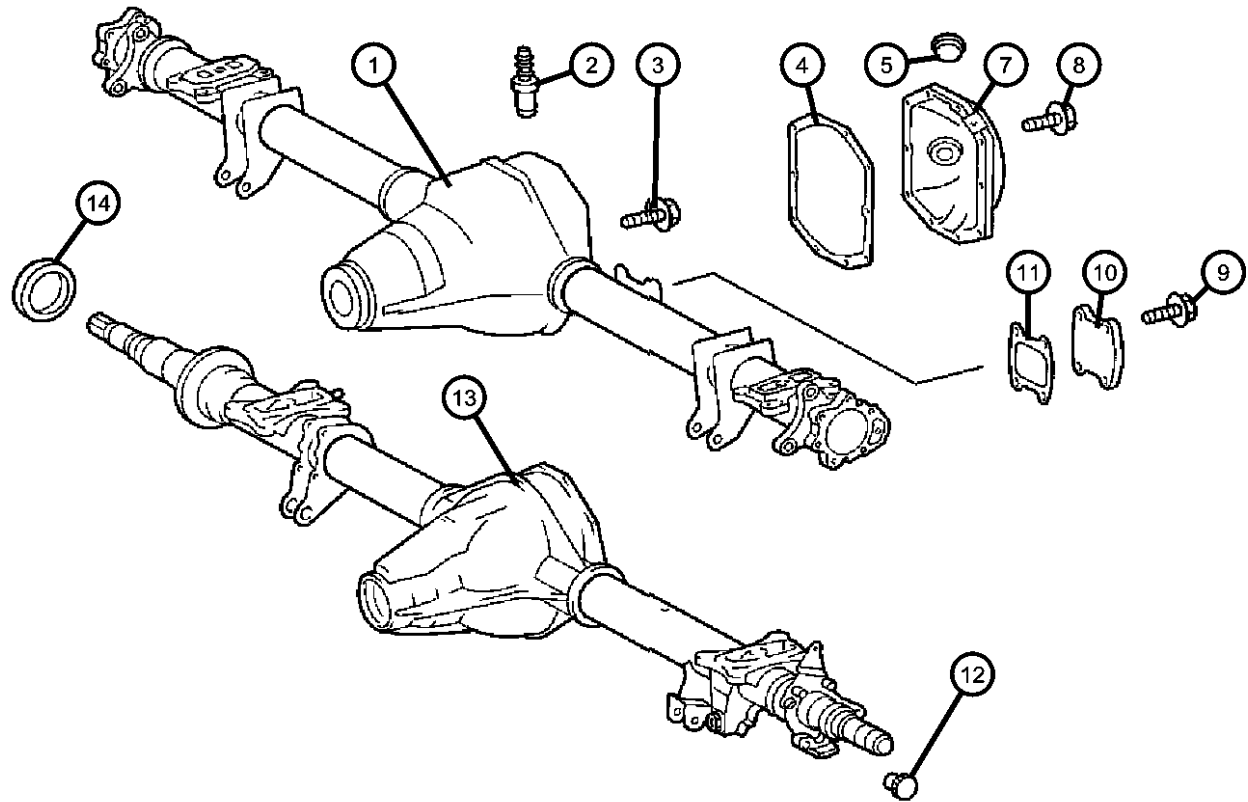
ITEM	PART NUMBER	QTY	LINE	SERIES	BODY	ENGINE	TRANS	TRIM	DESCRIPTION
1	05139133AA	1	3, 7	L	12, 15, 16				HOUSING, Rear Axle
2	05103948AA	1	3, 7	L	12, 15, 16				VENT, Axle
		1	2, 6	L	11, 12, 14, 15, 16				
		1	2, 6	L	51, 52, 54, 55, 56				
		1	2, 6	L	01, 02, 06				
3	06104225AA	4	3, 7	L	12, 15, 16				BOLT, Hex Head
		4	2, 6	L	11, 12, 14, 15, 16				Carrier Bearing Cap, Mounting
		4	2, 6	L	51, 52, 54, 55, 56				Carrier Bearing Cap, Mounting
		4	2, 6	L	01, 02, 06				Carrier Bearing Cap, Mounting
4	05103574AA	1	2, 3, 6, 7						GASKET, Differential CoverMounting
5	05097712AA	1	2, 3, 6, 7						PLUG, Oil Drain, Oil Filling and Drain
-6	05134372AA	1	2, 3, 6, 7						GASKET, Oil Filling and Drain Plug, Mounting
7	05103953AA	1	3, 7	L	12, 15, 16				COVER, Differential
		1	2, 6	L	11, 12, 14, 15, 16				
		1	2, 6	L	51, 52, 54, 55, 56				
		1	2, 6	L	01, 02, 06				
8	05134371AA	10	2, 3, 6, 7						SCREW AND WASHER, Differential Cover, Mounting
9	06104195AA	4	2, 6	L	01, 02, 06				Axle Housing Cover, Mounting
		4	2, 6	L	11, 12, 14, 15, 16				Axle Housing Cover, Mounting

SPRINTER (VA)

SERIES	LINE	BODY	ENGINE	TRANSMISSION
L = LOWLINE	3 = HD DODGE 2WD 6 = Lt. Duty DODGE 4WD 2 = Med. Duty DODGE 2WD 7 = Med. Duty DODGE 4WD	55 = Wagon 140" 54 = Wagon 118" 52 = Wagon 140" 51 = Wagon 118" 12 = Van 140" 11 = Van 118" 06 = Front Section 158" 14 = Van 118" 15 = Van 140" 16 = Van 158" 56 = Wagon 158" 01 = Chassis Forward Control 118" 02 = Chassis Forward Control 140"	EX8 = Engine-2.7L I5 Mercedes Turbo Diesel	DGJ = Transmission-5-Spd. Automatic,W5A580

AR = use ase required - = Non illustrated part

Differential Housing,Rear
Figure 3-220



ITEM	PART NUMBER	QTY	LINE	SERIES	BODY	ENGINE	TRANS	TRIM	DESCRIPTION
		4	2, 6	L	51, 52, 54, 55, 56				Axle Housing Cover, Mounting
10	05134668AA	1	2, 6	L	11, 12, 14, 15, 16				COVER Axle Housing
		1	2, 6	L	51, 52, 54, 55, 56				Axle Housing
		1	2, 6	L	01, 02, 06				Axle Housing
11	05134669AA	1	2, 6	L	11, 12, 14, 15, 16				GASKET Axle Housing Cover, Mounting
		1	2, 6	L	51, 52, 54, 55, 56				Axle Housing Cover, Mounting
		1	2, 6	L	01, 02, 06				Axle Housing Cover, Mounting
12	05134667AA	2	3, 7	L	12, 15, 16				PLUG, To Lock Holes for ABS
13	05139133AA	1	3, 7	L	12, 15, 16				HOUSING, Rear Axle, For Dual Rear Wheels
14									THRUST RING
	05104027AA	1	3, 7	L	12, 15, 16				Right
	05134665AA	1	3, 7	L	12, 15, 16				Left

SPRINTER (VA)

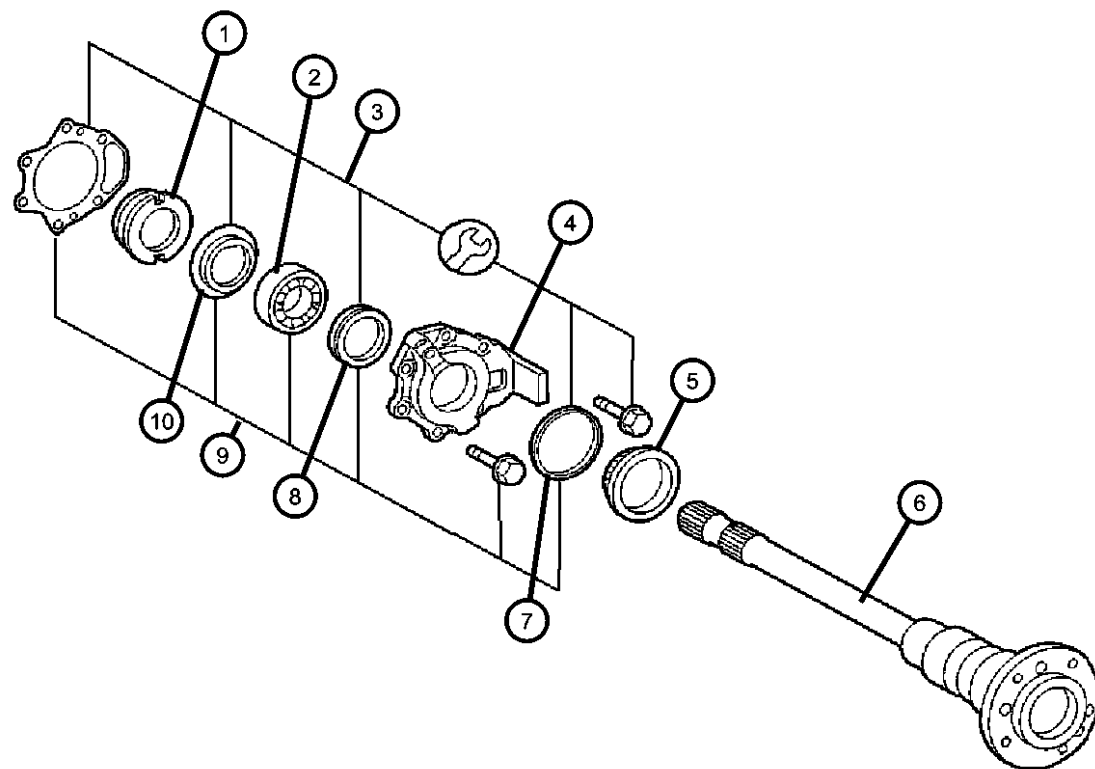
SERIES	LINE	BODY	ENGINE	TRANSMISSION
L = LOWLINE	3 = HD DODGE 2WD 6 = Lt. Duty DODGE 4WD 2 = Med. Duty DODGE 2WD 7 = Med. Duty DODGE 4WD	55 = Wagon 140" 54 = Wagon 118" 52 = Wagon 140" 51 = Wagon 118" 12 = Van 140" 11 = Van 118" 06 = Front Section 158" 14 = Van 118" 15 = Van 140" 16 = Van 158" 56 = Wagon 158"	EX8 = Engine-2.7L I5 Mercedes Turbo Diesel	DGJ = Transmission-5-Spd. Automatic,W5A580
		01 = Chassis Forward Control 118" 02 = Chassis Forward Control 140"		

AR = use ase required - = Non illustrated part

Axle Shaft and Wheel Bearings, Single Rear Wheels

Figure 3-230

ITEM	PART NUMBER	QTY	LINE	SERIES	BODY	ENGINE	TRANS	TRIM	DESCRIPTION
1									NUT, Axle shaft
	05134634AA	1	2, 6	L					Right
	05134635AA	1	2, 6	L					Left
2	05103883AA	2	2, 6	L					BEARING, WheelRight or Left
3	05104559AA	2	2, 6	L					SEAL KIT, Axle shaft
4									COVER, Axle bearing
	05134638AA	1	2, 6	L					Right
	05134639AA	1	2, 6	L					Left
5	05134641AA	2	2, 6	L					TONE RING, SensorRight or Left
6									SHAFT, Axle
	05134660AA	1	2, 6	L					Right
	05134661AA	1	2, 6	L					Left
7	05104566AA	2	2, 6						SEAL, Rear Axle Flange
8	05139760AA	2	2, 6						SEAL, Rear Axle Flange
9	05103601AA	2	2, 6	L					BEARING KIT, Axle shaft
10	05139738AA	2	2, 6						LOCK, Hub Nut



SPRINTER (VA)

SERIES

L = LOWLINE

LINE

3 = HD DODGE 2WD
 6 = Lt. Duty DODGE 4WD
 2 = Med. Duty DODGE 2WD
 7 = Med. Duty DODGE 4WD

BODY

55 = Wagon 140"
 54 = Wagon 118"
 52 = Wagon 140"
 51 = Wagon 118"
 12 = Van 140"
 11 = Van 118"
 06 = Front Section 158"
 14 = Van 118"
 15 = Van 140"
 16 = Van 158"
 56 = Wagon 158"
 01 = Chassis Forward Control
 118"
 02 = Chassis Forward Control
 140"

ENGINE

EX8 = Engine-2.7L I5
 Mercedes Turbo Diesel

TRANSMISSION

DGJ = Transmission-5-Spd.
 Automatic, W5A580

AR = use ase required - = Non illustrated part

2004 VA

<< RETURN TO GROUP INDEX

This is the cut pages sample. Download all 675 page(s) at: ManualPlace.com