

VIN PLATE DECODING INFORMATION

1	2	3	4	5	6	7	8	9	10	11	12 thru 17
WMI	WMI	WMI	Other	Model	Model	Engine, Brake	Engine, Brake	Check Digit	Model Year	Assy. Plant	Sequence No.

The following table interprets the VIN Plate position shown above.

Position	Interpretation	Codes = Description
1	World Manufacturer Identification	W = DaimlerChrysler AG
2	World Manufacturer Identification	D = Sprinter
3	World Manufacturer Identification	1 = Sprinter Chassis-Cab 5 = Sprinter Multipurpose Passenger Vehicle
4	GVWR & Pass. Safety	X = 4 X 2 Cab-Chassis W = 4 X 2 Multipurpose Passenger Vehicle Y = 4 X 2 Truck
5	Model, Wheelbase, GVWR	D = Combine with position 6
6	Model, Wheelbase, GVWR	1 = 2500C/C2500/P2500 3000 mm 15 in. wheel 8,001 - 9,000 lbs. Class G 2 = 2500C/C2500/P2500 3550 mm 15 in. wheel 8,001 - 9,000 lbs. Class G 6 = 2500C/C2500/P2500 3567 mm 16in. wheel 8,001 - 9,000 lbs. Class G 3 = 2500C/C2500/P2500 4025 mm 15 in. wheel 8,001 - 9,000 lbs. Class G 5 = 3500C/C3500 4025 mm 15 in. wheel 9,001 - 10,000 lbs. Class H 7 = 2500C/C2500/P2500 4042 mm 16in. wheel 8,001 - 9,000 lbs. Class G 4 = 3500C/C3500 3550 mm 15 in. wheel 9,001 - 10,000 lbs. Class H
7	Engine, Brake	4 = Combine with position 8
8	Engine, Brake	3 = 2.7L 45 State Diesel, Hydraulic Brakes 1 = 2.7L I-5 Diesel, Hydraulic Brakes 2 = 2.7L 50 State Diesel, Hydraulic Brakes
9	Check Digit	0 = Check Digit 0 = Check Digit
10	Model Year	2 = 2002
11	Assembly Plant	5 = Dusseldorf R = Dusseldorf
12 thru 17	Vehicle Build Sequence	Model Year Assembly Sequence

Group - 2

Front Suspension & Drive

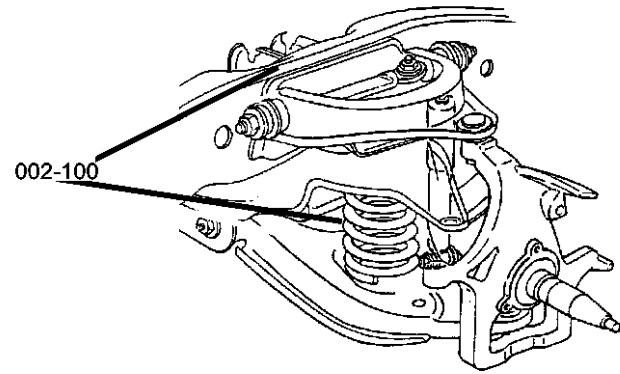
Group - 2 Front Suspension & Drive

Illustration Title

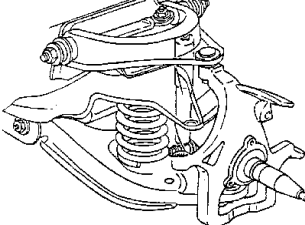
Group-Fig. No.

Front Suspension

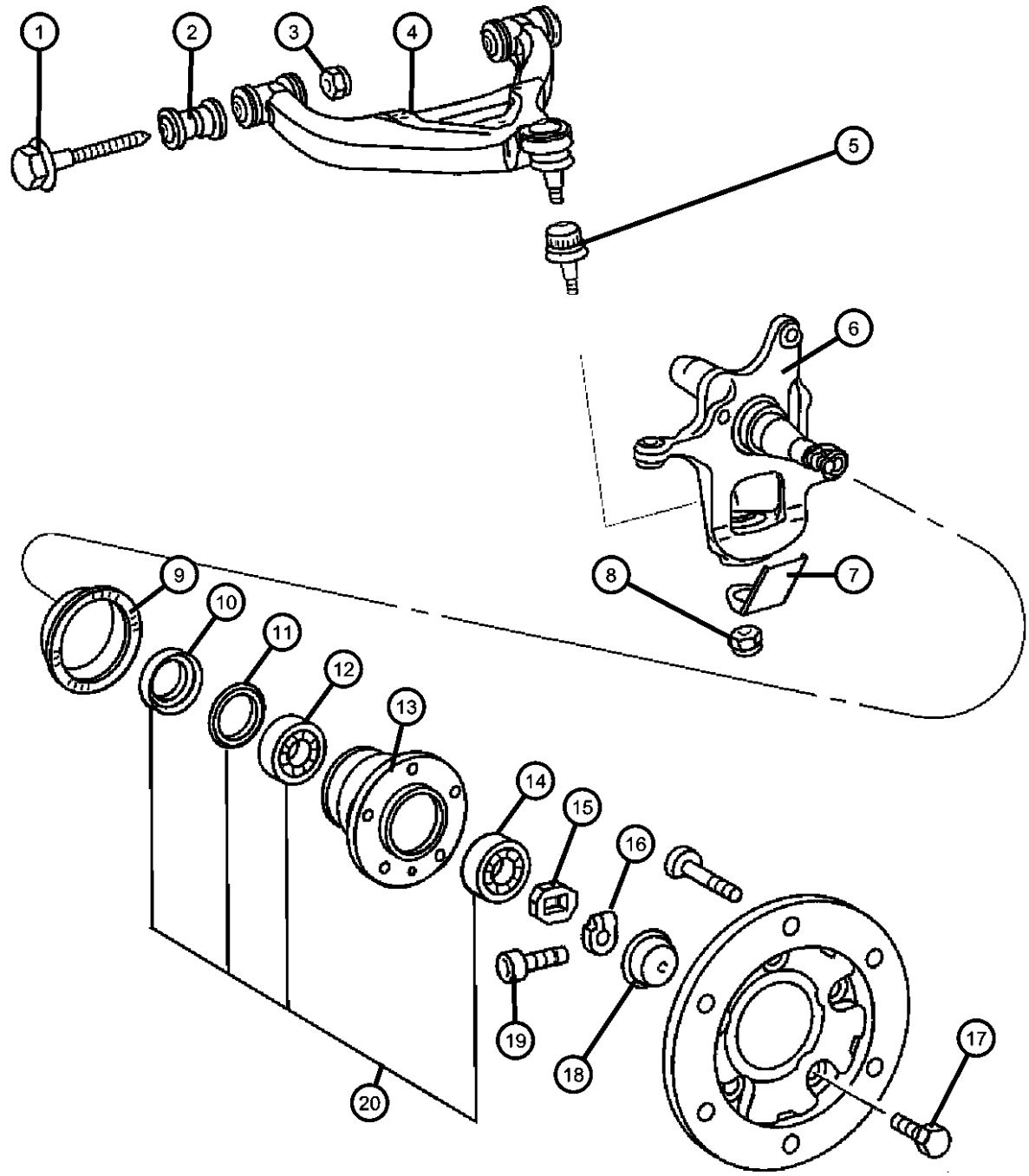
Front Control Arms, Knuckles, Bearings and Hubs.....	Fig. 2 - 110
Front Shocks	Fig. 2 - 120
Front Stabilizer Bar	Fig. 2 - 130
Front, Spring.....	Fig. 2 - 140



002-100

<p>002-100 Front Suspension</p> 			
---	--	--	--

Front Control Arms, Knuckles, Bearings and Hubs
Figure 2-110



ITEM	PART NUMBER	QTY	LINE	SERIES	BODY	ENGINE	TRANS	TRIM	DESCRIPTION
1	05133819AA	4							BOLT, Hex Head
2	05133818AA	2	2, 3, 6, 7						BUSHING, Control Arm
3									NUT
	06104719AA	2	2, 6	L	11, 12, 14, 15, 16				
		2	2, 6	L	51, 52, 54, 55, 56				
		2	3, 7	L	12, 15, 16				
4									ARM, Lower Control, Front
	05104578AA	1	2, 3, 6, 7						Left
	05136057AA	1	2, 3, 6, 7						Right
5	05104075AA	1	2, 3, 6, 7						BALL JOINT, Lower Control Arm
6									Right or Left
	05104579AA	1	3, 7						Left
	05135232AA	1	2, 6	L	11, 12, 14, 15, 16				Right
		1	2, 6	L	51, 52, 54, 55, 56				Right
	05135233AA	1	2, 6	L	11, 12, 14, 15, 16				Left
		1	2, 6	L	51, 52, 54, 55, 56				Left
	05139492AA	1	3, 7						Right
7	05136122AA	2							PLATE, Control Arm
8	05136123AA	1	2, 3, 6, 7						NUT, Ball Joint
9	05139358AA	2							RING, Tone
10	05103901AA	1							SEAL, Hub
11	05139359AA	2							SEAL, Wheel Hub

SPRINTER (VA)

SERIES LINE
 L = LOWLINE 3 = HD DODGE 2WD
 6 = Lt. Duty DODGE 4WD
 2 = Med. Duty DODGE 2WD
 7 = Med. Duty DODGE 4WD

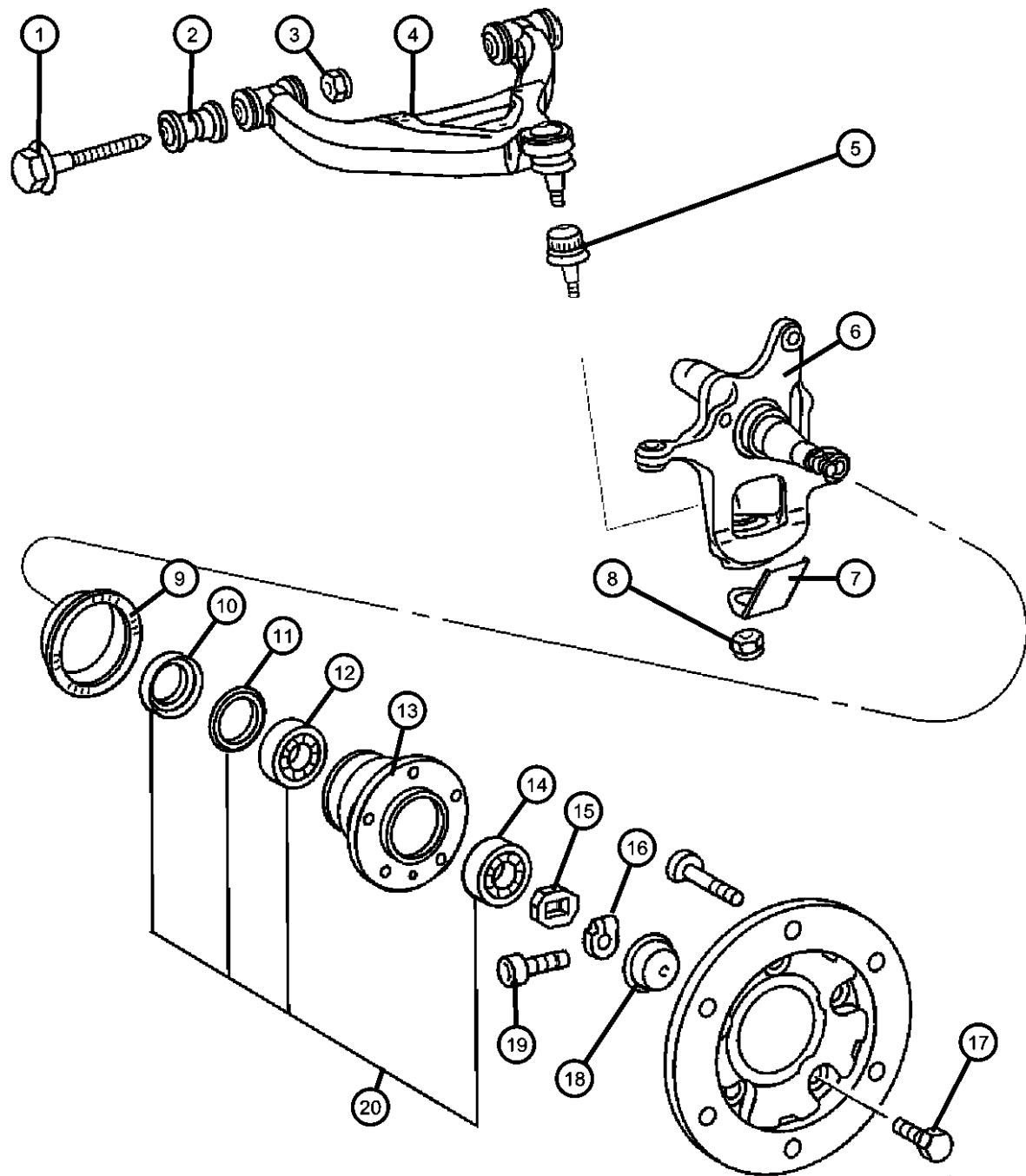
BODY
 01 = CHASSIS FORWARD CONTROL W.B.1
 02 = CAB CHASSIS WHEEL BASE 2
 06 = CAB CHASSIS WHEEL BASE 6
 11 = VAN WHEEL BASE 1
 12 = VAN WHEEL BASE 2
 51 = WAGON WHEEL BASE 1
 52 = WAGON WHEEL BASE 2
 14 = VAN WHEEL BASE 4
 15 = VAN WHEEL BASE 5
 56 = WAGON WHEEL BASE 6
 16 = VAN WHEEL BASE 6
 54 = WAGON WHEEL BASE 4
 55 = WAGON WHEEL BASE 5

ENGINE
 EX9 = Engine-2.7L I5
 Mercedes Turbo Diesel

TRANSMISSION
 DGJ = Transmission-5-Spd. Automatic, W5A580

AR = use ase required - = Non illustrated part

Front Control Arms, Knuckles, Bearings and Hubs
Figure 2-110



ITEM	PART NUMBER	QTY	LINE	SERIES	BODY	ENGINE	TRANS	TRIM	DESCRIPTION
12	05103779AA	2							BEARING, AxleInner
13									HUB, Front Wheel
	05104556AA	2							Up To Front Axle S482213/Y422059
	05139360AA	2							From Front Axle S482214/Y422060
14	05103869AA	2							BEARING, AxleOuter
15	05103956AA	2							WASHER, Thrust, Front
16	05097843AA	2							NUT
17	06104258AA	12	3, 7	L	12, 15, 16				BOLT, Hub
18	05103914AA	2							CAP, Wheel Hub Grease
19	05104617AA	2							SCREW
20									HUB AND BEARING PACKAGE, Kit
	05103579AA	1							From Front Axle S231916/Y245977
	05139357AA	1							Up To Front Axle S231915/Y245976

SPRINTER (VA)

SERIES
L = LOWLINE

LINE

3 = HD DODGE 2WD
6 = Lt. Duty DODGE 4WD
2 = Med. Duty DODGE 2WD
7 = Med. Duty DODGE 4WD

BODY

01 = CHASSIS FORWARD CONTROL W.B.1
02 = CAB CHASSIS WHEEL BASE 2
06 = CAB CHASSIS WHEEL BASE 6
11 = VAN WHEEL BASE 1
12 = VAN WHEEL BASE 2
51 = WAGON WHEEL BASE 1
52 = WAGON WHEEL BASE 2
14 = VAN WHEEL BASE 4
15 = VAN WHEEL BASE 5
56 = WAGON WHEEL BASE 6
16 = VAN WHEEL BASE 6
54 = WAGON WHEEL BASE 4
55 = WAGON WHEEL BASE 5

ENGINE

EX9 = Engine-2.7L I5
Mercedes Turbo Diesel

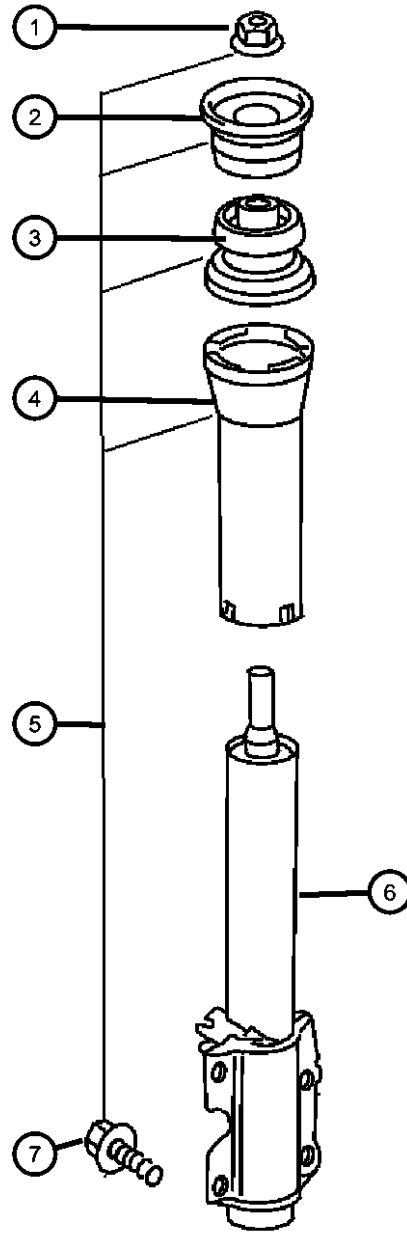
TRANSMISSION

DGJ = Transmission-5-Spd. Automatic, W5A580

AR = use ase required - = Non illustrated part

2002 VA

Front Shocks
Figure 2-120



ITEM	PART NUMBER	QTY	LINE	SERIES	BODY	ENGINE	TRANS	TRIM	DESCRIPTION
------	-------------	-----	------	--------	------	--------	-------	------	-------------

Note: Sales Codes:
[SHA]=Stabilizer Bar - Front
[3AT]=Rear Springs Weight 3.88T

1	05125762AA	2	2, 6	L	11, 12, 14, 15, 16				NUT
		2	2, 6	L	51, 52, 54, 55, 56				
		2	3, 7	L	12, 15, 16				
2	05118718AA	2	2, 6	L	11, 12, 14, 15, 16				BUSHING, Shock Absorber
		2	2, 6	L	51, 52, 54, 55, 56				
		2	3, 7	L	12, 15, 16				
3	05118722AA	2	2, 6	L	11, 12, 14, 15, 16				BUSHING, Shock Absorber
		2	2, 6	L	51, 52, 54, 55, 56				
		2	3, 7	L	12, 15, 16				
4	05118728AA	2	3, 7	L	12, 15, 16				SHIELD, Shock Absorber Dust
		2	2, 6	L	11, 12, 14, 15, 16				
		2	2, 6	L	51, 52, 54, 55, 56				
5	05133869AA	2	2, 6	L	11, 12, 14, 15, 16				PARTS KIT, Shock
		2	2, 6	L	51, 52, 54, 55, 56				Includes Items 1,2,3,4,7
		2	2, 6	L	51, 52, 54, 55, 56				Includes Items 1,2,3,4,7
		2	3, 7	L	12, 15, 16				Includes Items 1,2,3,4,7
6									ABSORBER, Shock

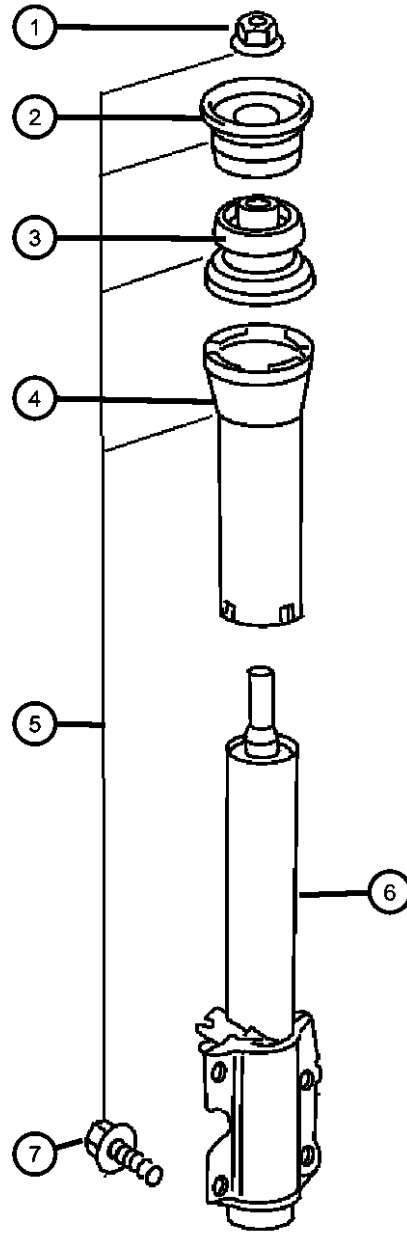
SPRINTER (VA)

SERIES	LINE	BODY	ENGINE	TRANSMISSION
L = LOWLINE	3 = HD DODGE 2WD 6 = Lt. Duty DODGE 4WD 2 = Med. Duty DODGE 2WD 7 = Med. Duty DODGE 4WD	01 = CHASSIS FORWARD CONTROL W.B.1 02 = CAB CHASSIS WHEEL BASE 2 06 = CAB CHASSIS WHEEL BASE 6 11 = VAN WHEEL BASE 1 12 = VAN WHEEL BASE 2 51 = WAGON WHEEL BASE 1 52 = WAGON WHEEL BASE 2 14 = VAN WHEEL BASE 4 15 = VAN WHEEL BASE 5 56 = WAGON WHEEL BASE 6 16 = VAN WHEEL BASE 6 54 = WAGON WHEEL BASE 4 55 = WAGON WHEEL BASE 5	EX9 = Engine-2.7L I5 Mercedes Turbo Diesel	DGJ = Transmission-5-Spd. Automatic, W5A580

AR = use ase required - = Non illustrated part

2002 VA

Front Shocks
Figure 2-120



ITEM	PART NUMBER	QTY	LINE	SERIES	BODY	ENGINE	TRANS	TRIM	DESCRIPTION
	05104063AA	2	2, 6	L					Shock Only
	05104575AA	2	3, 7	L	12, 15, 16				Shock Only
	05128502AA	1	3, 7	L	12, 15, 16				Shock Only
	05139548AA	2	2, 6						Shock Only [3AT,SHA]
7	05125699AA	8							SCREW, Strut to Knuckle, Mounting

SPRINTER (VA)

SERIES

L = LOWLINE
 3 = HD DODGE 2WD
 6 = Lt. Duty DODGE 4WD
 2 = Med. Duty DODGE 2WD
 7 = Med. Duty DODGE 4WD

LINE

BODY

01 = CHASSIS FORWARD CONTROL W.B.1
 02 = CAB CHASSIS WHEEL BASE 2
 06 = CAB CHASSIS WHEEL BASE 6
 11 = VAN WHEEL BASE 1
 12 = VAN WHEEL BASE 2
 51 = WAGON WHEEL BASE 1
 52 = WAGON WHEEL BASE 2
 14 = VAN WHEEL BASE 4
 15 = VAN WHEEL BASE 5
 56 = WAGON WHEEL BASE 6
 16 = VAN WHEEL BASE 6
 54 = WAGON WHEEL BASE 4
 55 = WAGON WHEEL BASE 5

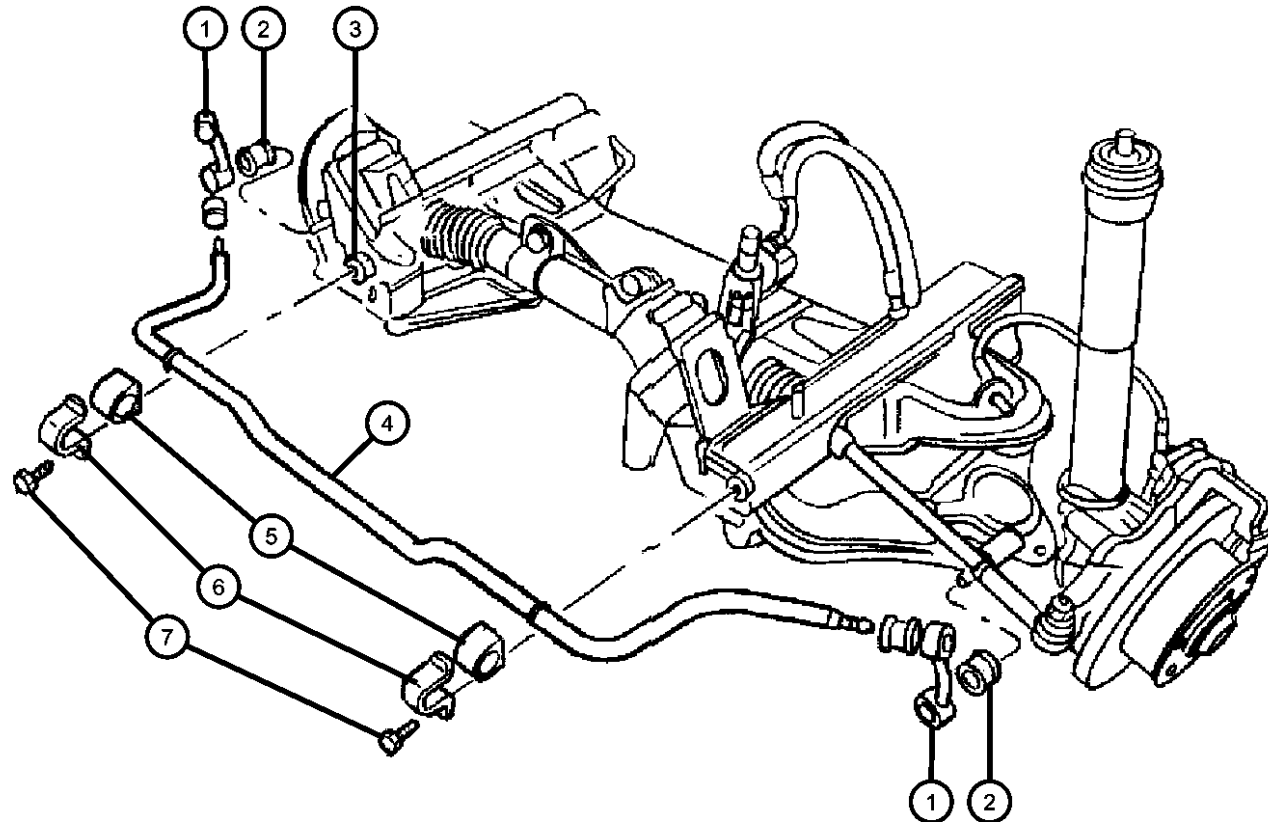
ENGINE

EX9 = Engine-2.7L I5
 Mercedes Turbo Diesel

TRANSMISSION

DGJ = Transmission-5-Spd. Automatic, W5A580

Front Stabilizer Bar
Figure 2-130



ITEM	PART NUMBER	QTY	LINE	SERIES	BODY	ENGINE	TRANS	TRIM	DESCRIPTION
1									LINK, Stabilizer Bar
	05104059AA	1	2, 6	L	11, 12, 14, 15, 16				Left
		1	2, 6	L	51, 52, 54, 55, 56				Left
	05104060AA	1	2, 6	L	11, 12, 14, 15, 16				Right
		1	2, 6	L	51, 52, 54, 55, 56				Right
2									BUSHING
	05104066AA	4	2, 6	L	11, 12, 14, 15, 16				
		4	2, 6	L	51, 52, 54, 55, 56				
3									NUT
	05104677AA	2	2, 6	L	11, 12, 14, 15, 16				
		2	2, 6	L	51, 52, 54, 55, 56				
4									BAR, Front Sway
	05104576AA	1	2, 6	L	11, 12, 14, 15, 16				
		1	2, 6	L	51, 52, 54, 55, 56				
5									BUSHING, Stabilizer Bar
	05104577AA	2	2, 6	L	11, 12, 14, 15, 16				
		2	2, 6	L	51, 52, 54, 55, 56				
6									RETAINER, Stabilizer Bar Grommet
	05104067AA	2	2, 6	L	11, 12, 14, 15, 16				
		2	2, 6	L	51, 52, 54, 55, 56				
7									BOLT

SPRINTER (VA)

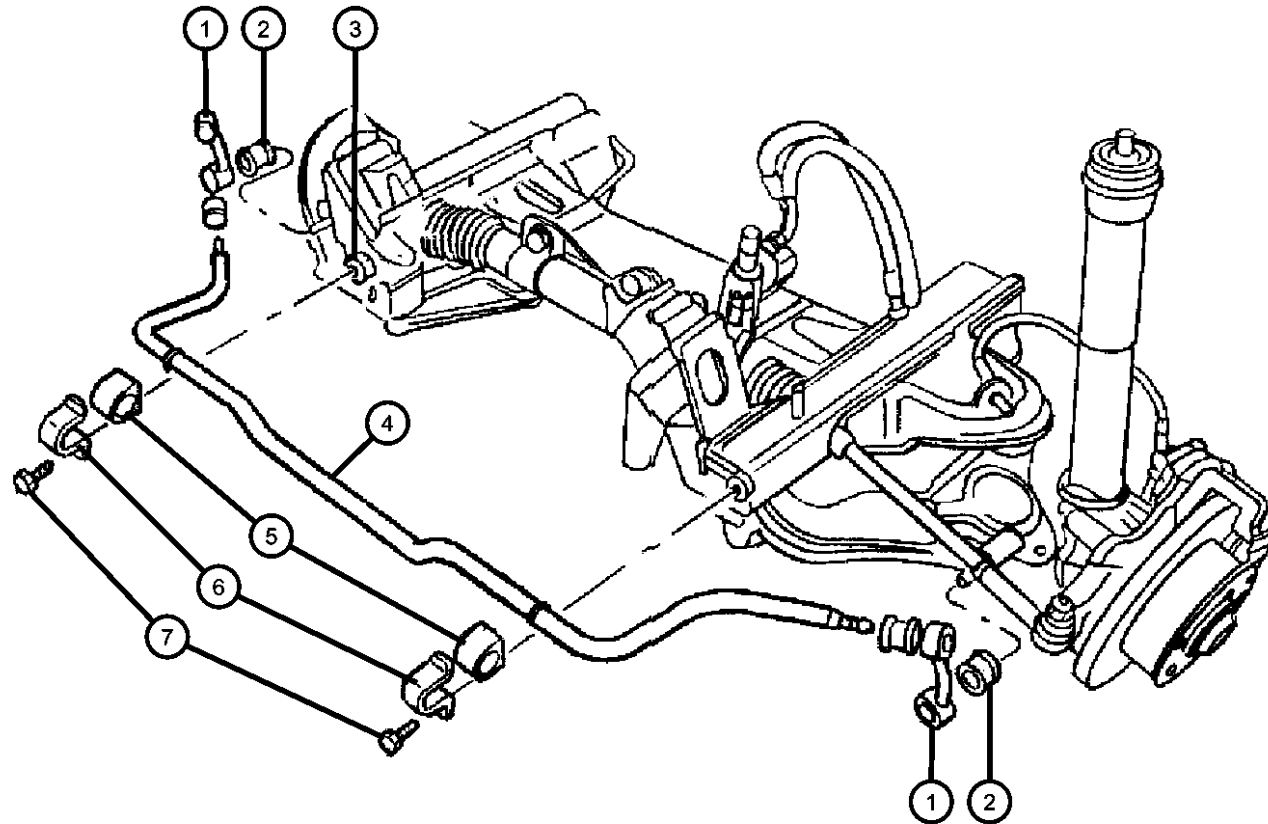
SERIES	LINE	BODY	ENGINE	TRANSMISSION
L = LOWLINE	3 = HD DODGE 2WD 6 = Lt. Duty DODGE 4WD 2 = Med. Duty DODGE 2WD 7 = Med. Duty DODGE 4WD	01 = CHASSIS FORWARD CONTROL W.B.1 02 = CAB CHASSIS WHEEL BASE 2 06 = CAB CHASSIS WHEEL BASE 6 11 = VAN WHEEL BASE 1 12 = VAN WHEEL BASE 2 51 = WAGON WHEEL BASE 1 52 = WAGON WHEEL BASE 2 14 = VAN WHEEL BASE 4 15 = VAN WHEEL BASE 5 56 = WAGON WHEEL BASE 6 16 = VAN WHEEL BASE 6 54 = WAGON WHEEL BASE 4 55 = WAGON WHEEL BASE 5	EX9 = Engine-2.7L I5 Mercedes Turbo Diesel	DGJ = Transmission-5-Spd. Automatic, W5A580

AR = use ase required - = Non illustrated part

2002 VA

Front Stabilizer Bar
Figure 2-130

ITEM	PART NUMBER	QTY	LINE	SERIES	BODY	ENGINE	TRANS	TRIM	DESCRIPTION
	05104656AA	2	2, 6	L	11, 12, 14, 15, 16				
		2	2, 6	L	51, 52, 54, 55, 56				



SPRINTER (VA)

SERIES

L = LOWLINE

LINE

3 = HD DODGE 2WD
6 = Lt. Duty DODGE 4WD
2 = Med. Duty DODGE 2WD
7 = Med. Duty DODGE 4WD

BODY

01 = CHASSIS FORWARD CONTROL W.B.1
02 = CAB CHASSIS WHEEL BASE 2
06 = CAB CHASSIS WHEEL BASE 6
11 = VAN WHEEL BASE 1
12 = VAN WHEEL BASE 2
51 = WAGON WHEEL BASE 1
52 = WAGON WHEEL BASE 2
14 = VAN WHEEL BASE 4
15 = VAN WHEEL BASE 5
56 = WAGON WHEEL BASE 6
16 = VAN WHEEL BASE 6
54 = WAGON WHEEL BASE 4
55 = WAGON WHEEL BASE 5

ENGINE

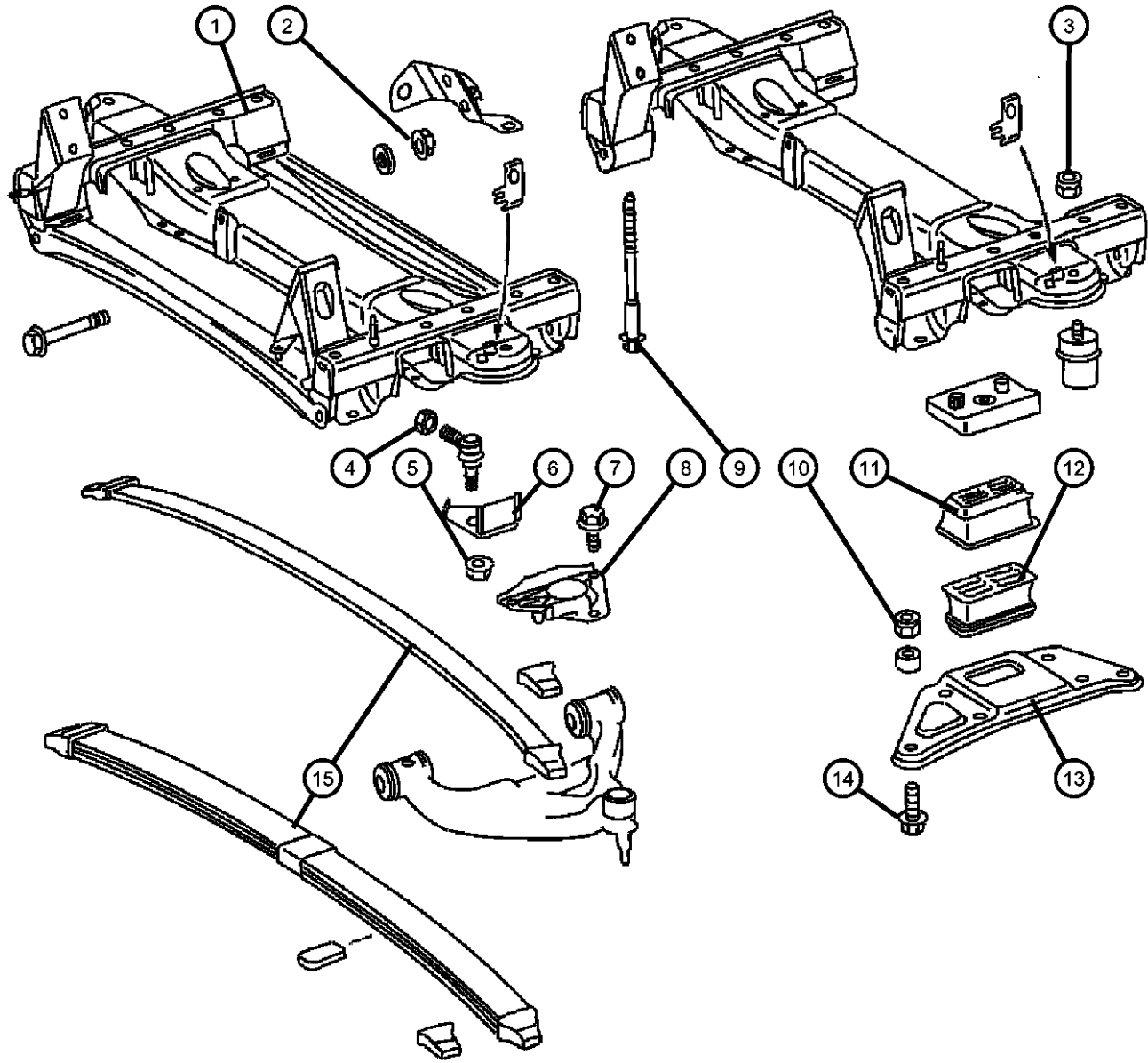
EX9 = Engine-2.7L I5
Mercedes Turbo Diesel

TRANSMISSION

DGJ = Transmission-5-Spd. Automatic, W5A580

AR = use ase required - = Non illustrated part

Front, Spring
Figure 2-140



ITEM	PART NUMBER	QTY	LINE	SERIES	BODY	ENGINE	TRANS	TRIM	DESCRIPTION
1	05104074AA	1	2, 6						CROSSMEMBER, Front Axle
2	05132896AA	6	2, 6	L	11, 12, 14, 15, 16				NUT
	06104718AA	4	2, 6	L	11, 12, 14, 15, 16				M12x1.5
		6	2, 6	L	51, 52, 54, 55, 56				
		4	3, 7	L	12, 15, 16				M12x1.5
		4	2, 6	L	51, 52, 54, 55, 56				M12x1.5
3	05132896AA	6	2, 6	L	11, 12, 14, 15, 16				NUT
		6	2, 6	L	51, 52, 54, 55, 56				
4	05125765AA	5	2, 6	L	11, 12, 14, 15, 16				NUT
		5	2, 6	L	51, 52, 54, 55, 56				
		5	3, 7	L	12, 15, 16				
5	05125761AA	2	2, 6	L	11, 12, 14, 15, 16				NUT
		2	2, 6	L	51, 52, 54, 55, 56				
6	05119249AA	2	2, 6	L	11, 12, 14, 15, 16				PLATE, Backing
		2	2, 6	L	51, 52, 54, 55, 56				
7	05126233AA	6	2, 6	L	11, 12, 14, 15, 16				BOLT M12x1.5x25.00

SPRINTER (VA)

SERIES

L = LOWLINE
 3 = HD DODGE 2WD
 6 = Lt. Duty DODGE 4WD
 2 = Med. Duty DODGE 2WD
 7 = Med. Duty DODGE 4WD

LINE

BODY

01 = CHASSIS FORWARD CONTROL W.B.1
 02 = CAB CHASSIS WHEEL BASE 2
 06 = CAB CHASSIS WHEEL BASE 6
 11 = VAN WHEEL BASE 1
 12 = VAN WHEEL BASE 2
 51 = WAGON WHEEL BASE 1
 52 = WAGON WHEEL BASE 2
 14 = VAN WHEEL BASE 4
 15 = VAN WHEEL BASE 5
 56 = WAGON WHEEL BASE 6
 16 = VAN WHEEL BASE 6
 54 = WAGON WHEEL BASE 4
 55 = WAGON WHEEL BASE 5

ENGINE

EX9 = Engine-2.7L I5
 Mercedes Turbo Diesel

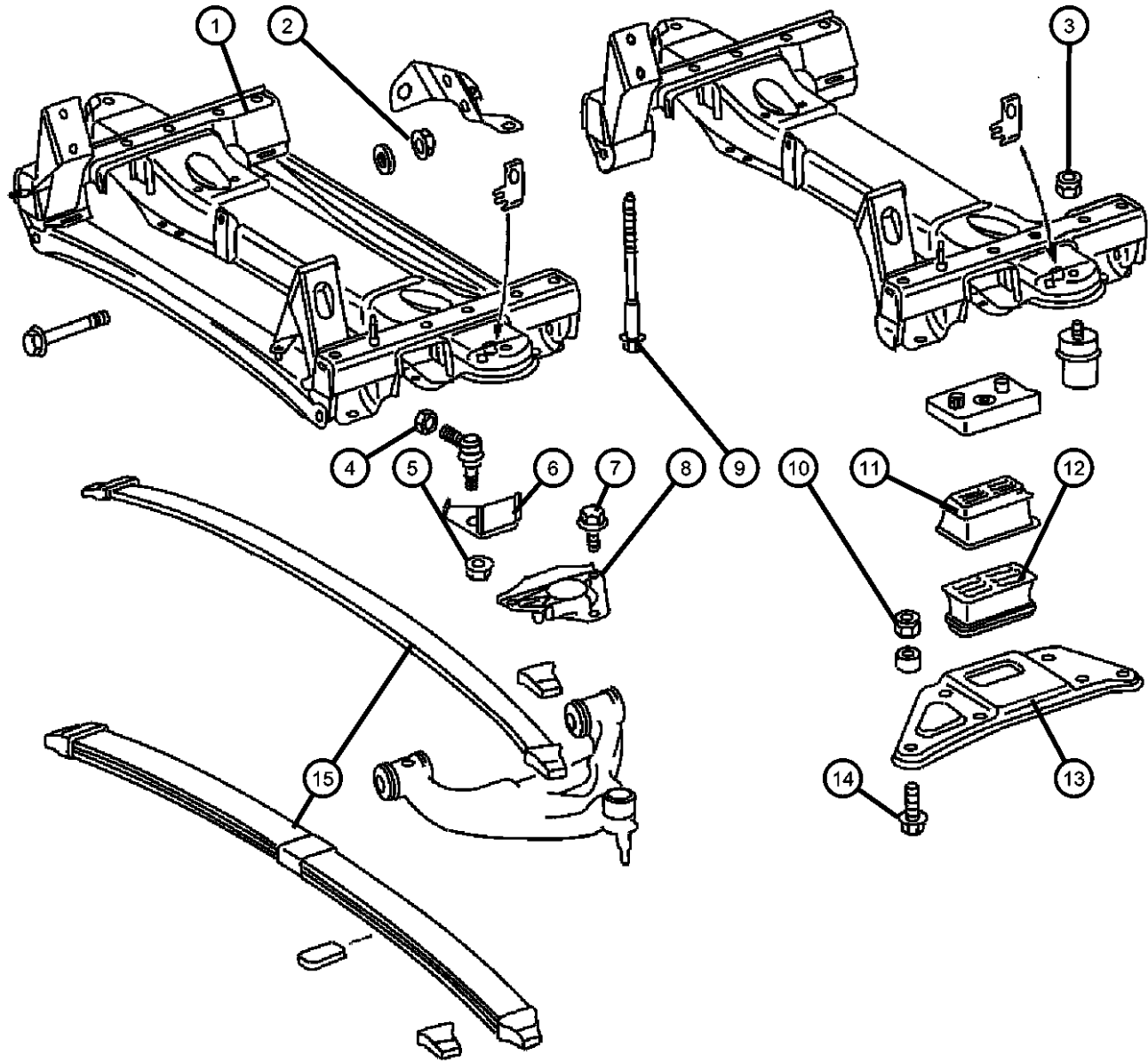
TRANSMISSION

DGJ = Transmission-5-Spd. Automatic, W5A580

AR = use ase required - = Non illustrated part

2002 VA

Front, Spring
Figure 2-140



ITEM	PART NUMBER	QTY	LINE	SERIES	BODY	ENGINE	TRANS	TRIM	DESCRIPTION
		6	2, 6	L	51, 52, 54, 55, 56				M12x1.5x25.00
8									PLATE, Stabilizer Bar
	05104064AA	1	2, 6	L	11, 12, 14, 15, 16				Right
		1	2, 6	L	51, 52, 54, 55, 56				Right
	05118707AA	1	2, 6	L	11, 12, 14, 15, 16				Left
		1	2, 6	L	51, 52, 54, 55, 56				Left
9									SCREW AND WASHER, Hex
	05125726AA	8	2, 6	L	51, 52, 54, 55, 56				
		8	3, 7	L	12, 15, 16				
		8	2, 6	L	11, 12, 14, 15, 16				
10									NUT
	06104717AA	8	2, 6	L	51, 52, 54, 55, 56				M10x1.5
		8	2, 6	L	11, 12, 14, 15, 16				M10x1.5
		8	3, 7	L	12, 15, 16				M10x1.5
	06104718AA	4	2, 6	L	11, 12, 14, 15, 16				M12x1.5
		4	3, 7	L	12, 15, 16				M12x1.5
		4	2, 6	L	51, 52, 54, 55, 56				M12x1.5
11	05139190AA	2							SEAT, Spring
12									SEAT, Spring
	05139188AA	1							Left
	05139189AA	1							Right
13									PLATE, Suspension

SPRINTER (VA)

SERIES

L = LOWLINE
 3 = HD DODGE 2WD
 6 = Lt. Duty DODGE 4WD
 2 = Med. Duty DODGE 2WD
 7 = Med. Duty DODGE 4WD

LINE

BODY

01 = CHASSIS FORWARD CONTROL W.B.1
 02 = CAB CHASSIS WHEEL BASE 2
 06 = CAB CHASSIS WHEEL BASE 6
 11 = VAN WHEEL BASE 1
 12 = VAN WHEEL BASE 2
 51 = WAGON WHEEL BASE 1
 52 = WAGON WHEEL BASE 2
 14 = VAN WHEEL BASE 4
 15 = VAN WHEEL BASE 5
 56 = WAGON WHEEL BASE 6
 16 = VAN WHEEL BASE 6
 54 = WAGON WHEEL BASE 4
 55 = WAGON WHEEL BASE 5

ENGINE

EX9 = Engine-2.7L I5
 Mercedes Turbo Diesel

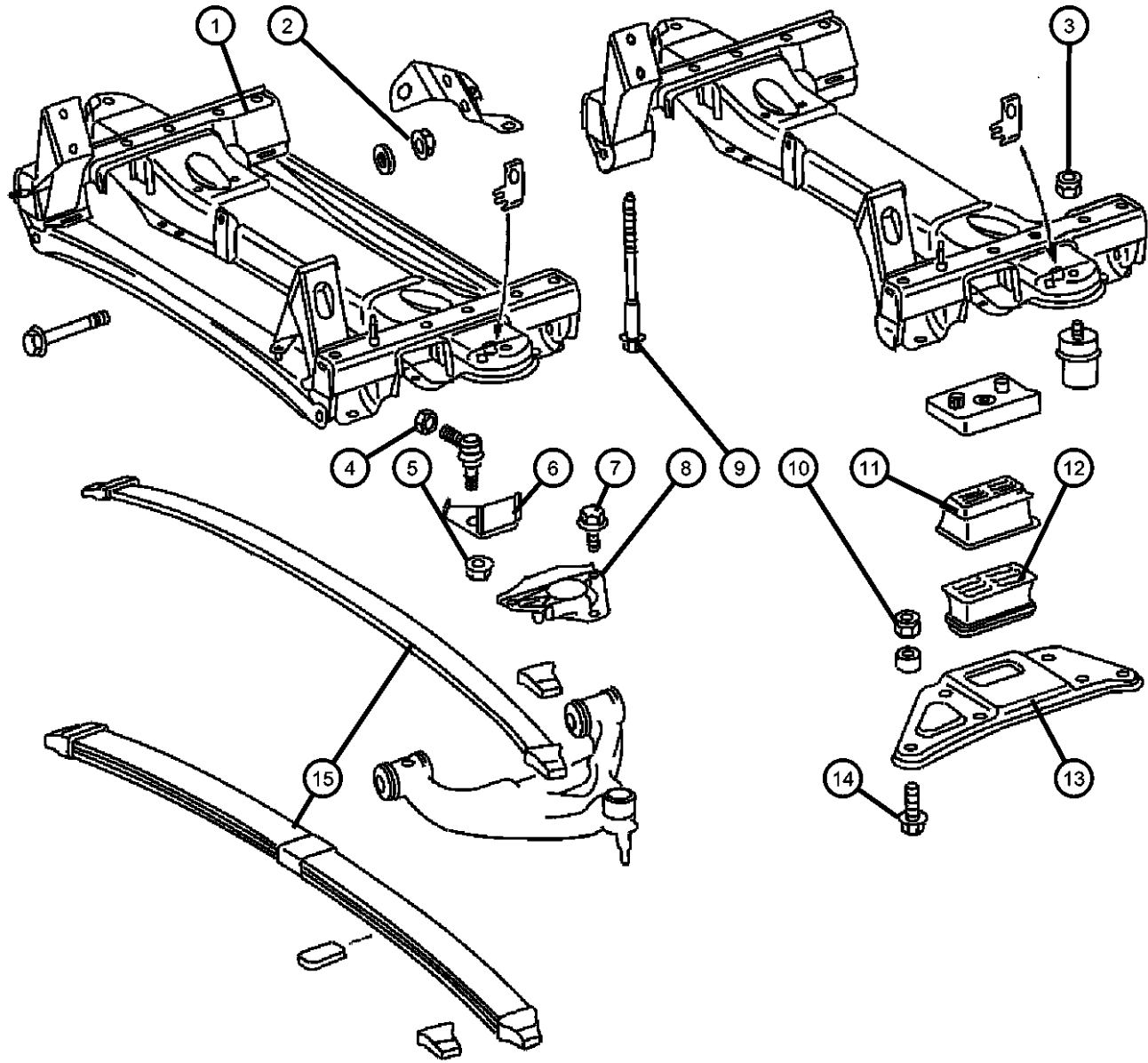
TRANSMISSION

DGJ = Transmission-5-Spd. Automatic, W5A580

AR = use ase required - = Non illustrated part

2002 VA

Front, Spring
Figure 2-140



ITEM	PART NUMBER	QTY	LINE	SERIES	BODY	ENGINE	TRANS	TRIM	DESCRIPTION
	05139186AA	1							Left
	05139187AA	1							Right
14	06104215AA	4	2, 6	L	51, 52, 54, 55, 56				BOLT, Hex Head M10x1.5x25.00
	06104233AA	4							M12x1.5x25.00
		4	2, 6	L	11, 12, 14, 15, 16				M10x1.5x25.00
15	05139112AA	1							SPRING, Front Leaf

SPRINTER (VA)

SERIES

L = LOWLINE
 3 = HD DODGE 2WD
 6 = Lt. Duty DODGE 4WD
 2 = Med. Duty DODGE 2WD
 7 = Med. Duty DODGE 4WD

LINE

BODY

01 = CHASSIS FORWARD CONTROL W.B.1
 02 = CAB CHASSIS WHEEL BASE 2
 06 = CAB CHASSIS WHEEL BASE 6
 11 = VAN WHEEL BASE 1
 12 = VAN WHEEL BASE 2
 51 = WAGON WHEEL BASE 1
 52 = WAGON WHEEL BASE 2
 14 = VAN WHEEL BASE 4
 15 = VAN WHEEL BASE 5
 56 = WAGON WHEEL BASE 6
 16 = VAN WHEEL BASE 6
 54 = WAGON WHEEL BASE 4
 55 = WAGON WHEEL BASE 5

ENGINE

EX9 = Engine-2.7L I5
 Mercedes Turbo Diesel

TRANSMISSION

DGJ = Transmission-5-Spd. Automatic, W5A580

AR = use ase required - = Non illustrated part

Group - 3

Rear Axle

Group - 3 Rear Axle

Group-Fig. No.

Illustration Title

Rear Axle

Differential Assembly,Rear Fig. 3 - 110

Differential and Housing

Internal Differential Parts,Rear Fig. 3 - 210

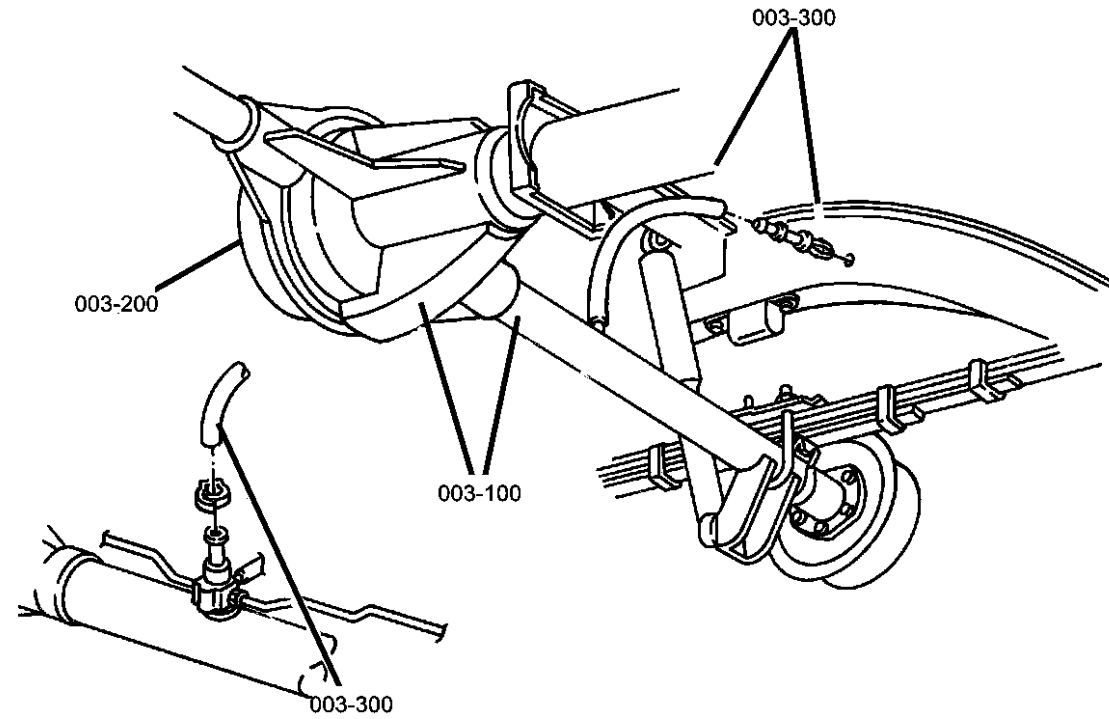
Differential Housing,Rear Fig. 3 - 220

Axle Shaft and Wheel Bearings,Single Rear Wheels..... Fig. 3 - 230

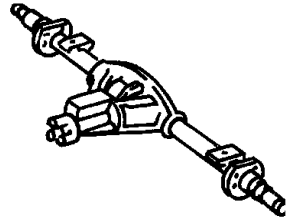
Axle Shaft and Wheel Bearings,Dual Rear Wheels Fig. 3 - 240

Rear Axle Vent

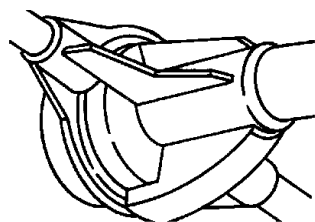
Vent,Rear Axle Fig. 3 - 310



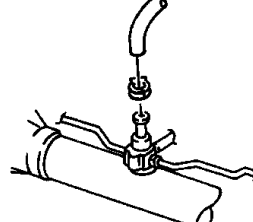
003-100
Rear Axle



003-200
Differential and Housing



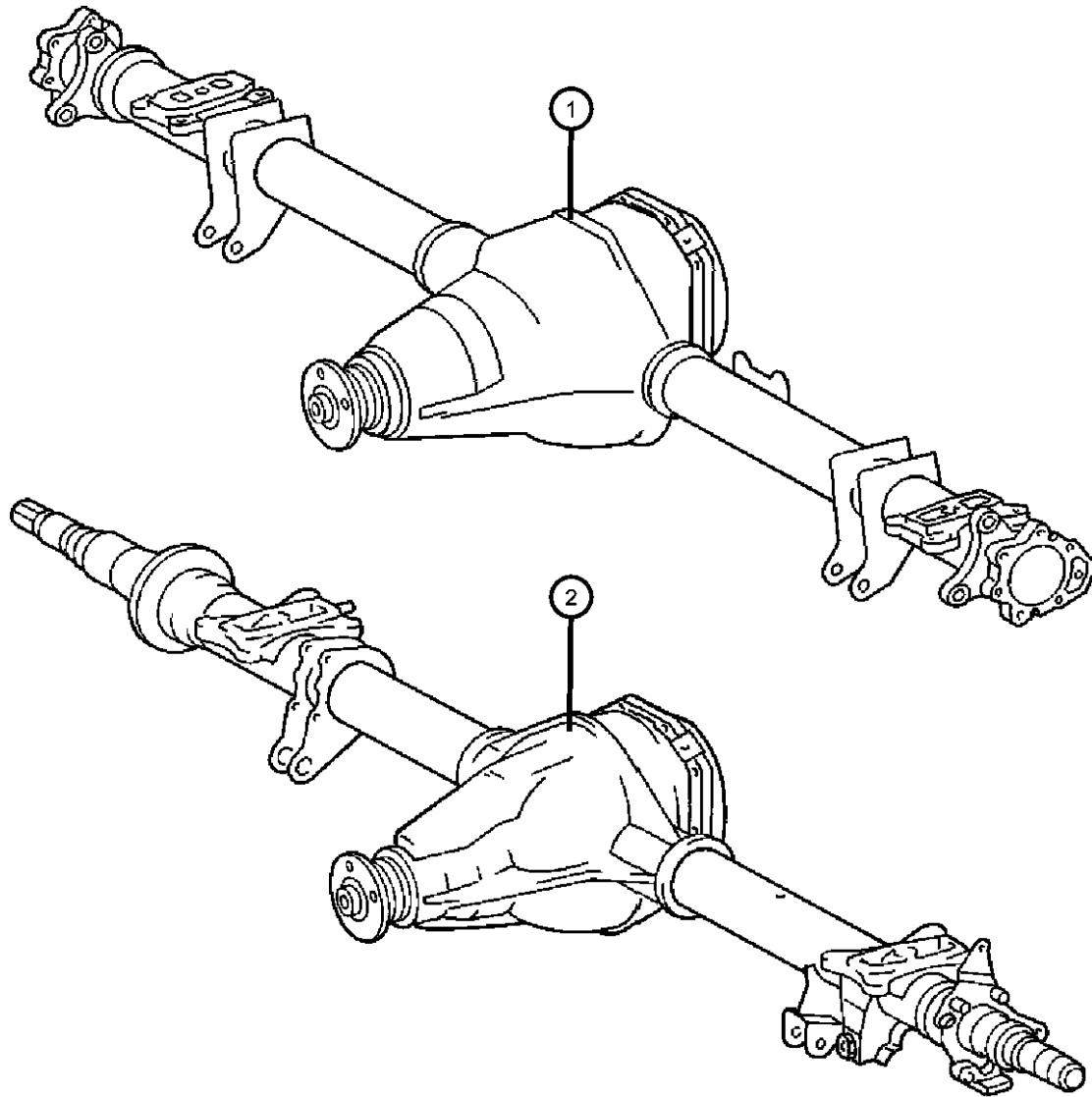
003-300
Rear Axle Vent



Differential Assembly,Rear
Figure 3-110

ITEM	PART NUMBER	QTY	LINE	SERIES	BODY	ENGINE	TRANS	TRIM	DESCRIPTION
------	-------------	-----	------	--------	------	--------	-------	------	-------------

Note: Sales Codes:
[DME]=Axle Ratio - 3.72
[DMF]=Axle Ratio - 4.11



1	05137591AA	1	2, 6						AXLE, Service Rear
	05136033AA								[DMF] Single Rear Axle
	05137755AA	1	2, 6	L					Mopar SAE 90 Gear Lube Quart for Sprinter Axles
	05136033AA								[DME] Single Rear Axle
2	05135823AA	1	3, 7	L	12, 15, 16				AXLE, Service Rear
	05136033AA								[DME] Dual Rear Axle
	05135928AA	1	3, 7	L					Mopar SAE 90 Gear Lube Quart for Sprinter Axles
	05136033AA								[DMF] Dual Rear Axle
									Mopar SAE 90 Gear Lube Quart for Sprinter Axles

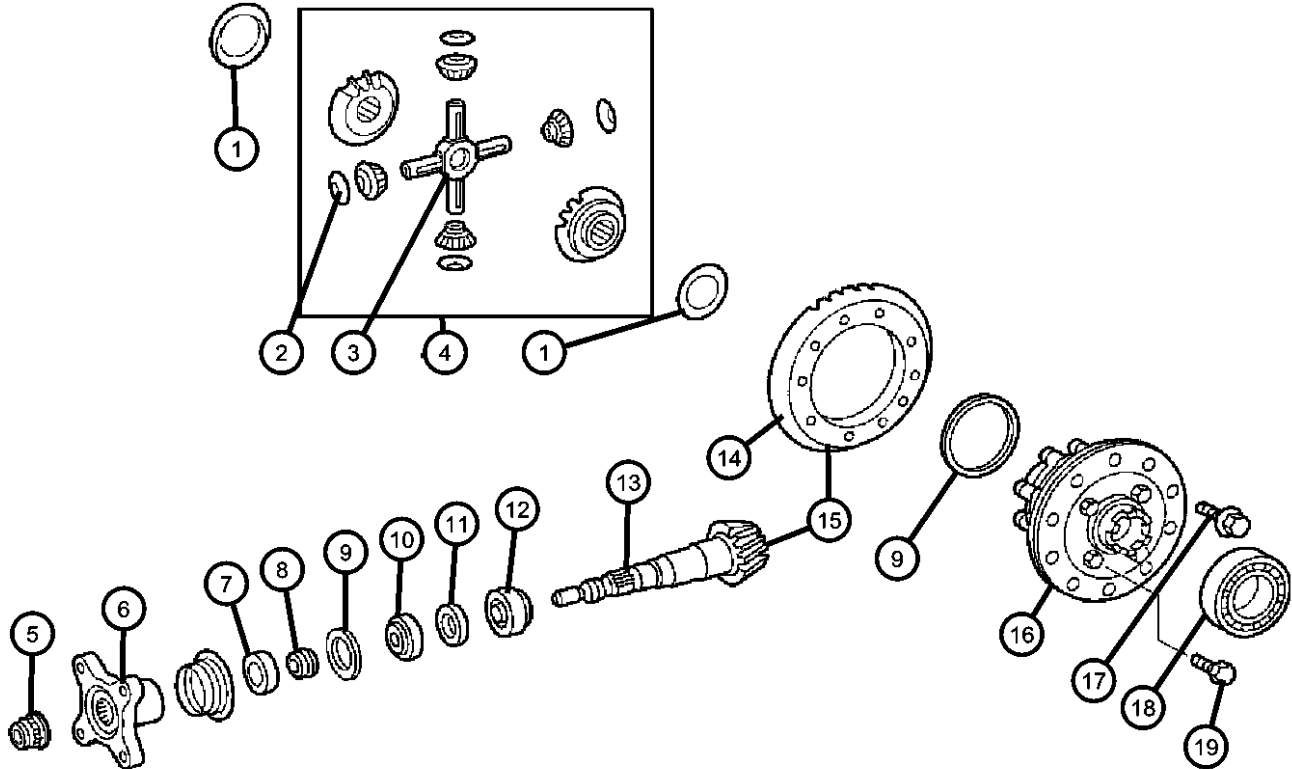
SPRINTER (VA)

SERIES	LINE	BODY	ENGINE	TRANSMISSION
L = LOWLINE	3 = HD DODGE 2WD 6 = Lt. Duty DODGE 4WD 2 = Med. Duty DODGE 2WD 7 = Med. Duty DODGE 4WD	01 = CHASSIS FORWARD CONTROL W.B.1 02 = CAB CHASSIS WHEEL BASE 2 06 = CAB CHASSIS WHEEL BASE 6 11 = VAN WHEEL BASE 1 12 = VAN WHEEL BASE 2 51 = WAGON WHEEL BASE 1 52 = WAGON WHEEL BASE 2 14 = VAN WHEEL BASE 4 15 = VAN WHEEL BASE 5 56 = WAGON WHEEL BASE 6 16 = VAN WHEEL BASE 6 54 = WAGON WHEEL BASE 4 55 = WAGON WHEEL BASE 5	EX9 = Engine-2.7L I5 Mercedes Turbo Diesel	DGJ = Transmission-5-Spd. Automatic,W5A580

AR = use ase required - = Non illustrated part

2002 VA

**Internal Differential Parts,Rear
Figure 3-210**



ITEM	PART NUMBER	QTY	LINE	SERIES	BODY	ENGINE	TRANS	TRIM	DESCRIPTION
1									WASHER, Side Gear Thrust
	05136792AA	AR	3, 7	L					1.30 MM Steel
	05136810AA	AR	3, 7	L					1.30 MM Brass
	05136819AA	AR	2, 3, 6, 7	L					1.40 MM Brass
	05136820AA	AR	3, 7	L					1.40 MM Steel
	05136822AA	AR	3, 7	L					1.50 MM Steel
	05136823AA	AR	3, 7	L					1.50 MM Brass
	05136826AA	AR	3, 7	L					1.60 MM Steel
	05136827AA	AR	3, 7	L					1.60 MM Brass
	05136829AA	AR	3, 7	L					1.70 MM Steel
	05136830AA	AR	3, 7	L					1.70 MM Brass
	05136834AA	AR	3, 7	L					1.80 MM Steel
	05136835AA	AR	3, 7	L					1.80 MM Brass
	05136841AA	AR	3, 7	L					1.90 MM Steel
2									WASHER, Pinion Gear
	05136148AA	4	3, 7						
		4	2, 6						
3	05136150AA	1	3, 7						SHAFT, Differential Pinion
4									GEAR PACKAGE, Differential
	05104558AA	1	2, 6	L	11, 12, 14, 15, 16				[DME,BGK]
		1	2, 6	L	51, 52, 54, 55, 56				[DME,BGK]
	05137602AA	1	2, 3, 6, 7						
5									NUT, Pinion Yoke
	05103957AA	1							Up To Axle L538154 or X004694
	05103958AA	1							From Axle L538155 or X004695
6	05134541AA	1		L					FLANGE, Driveshaft Yoke
7	05103966AA	1		L					RING, Pinion flange

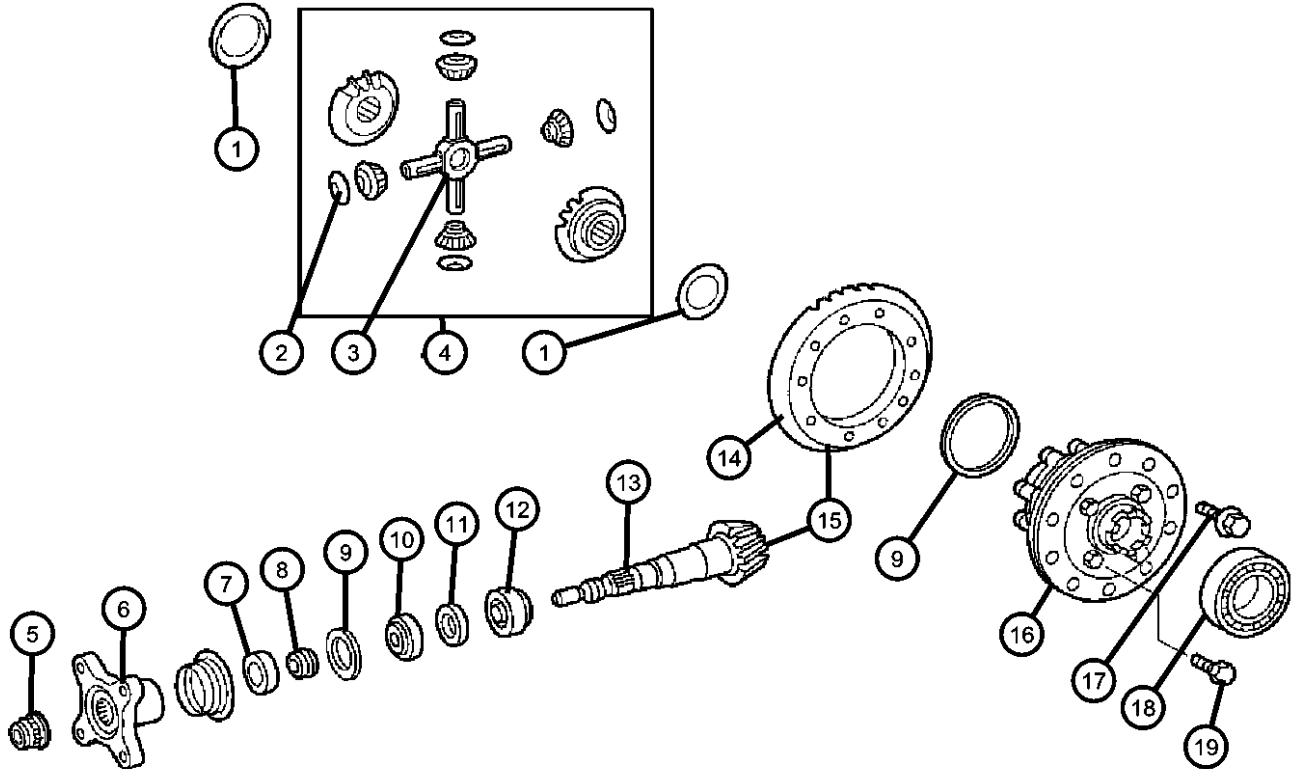
SPRINTER (VA)

SERIES	LINE	BODY	ENGINE	TRANSMISSION
L = LOWLINE	3 = HD DODGE 2WD 6 = Lt. Duty DODGE 4WD 2 = Med. Duty DODGE 2WD 7 = Med. Duty DODGE 4WD	01 = CHASSIS FORWARD CONTROL W.B.1 02 = CAB CHASSIS WHEEL BASE 2 06 = CAB CHASSIS WHEEL BASE 6 11 = VAN WHEEL BASE 1 12 = VAN WHEEL BASE 2 51 = WAGON WHEEL BASE 1 52 = WAGON WHEEL BASE 2 14 = VAN WHEEL BASE 4 15 = VAN WHEEL BASE 5 56 = WAGON WHEEL BASE 6 16 = VAN WHEEL BASE 6 54 = WAGON WHEEL BASE 4 55 = WAGON WHEEL BASE 5	EX9 = Engine-2.7L I5 Mercedes Turbo Diesel	DGJ = Transmission-5-Spd. Automatic,W5A580

AR = use ase required - = Non illustrated part

Internal Differential Parts,Rear
Figure 3-210

ITEM	PART NUMBER	QTY	LINE	SERIES	BODY	ENGINE	TRANS	TRIM	DESCRIPTION
8	05134540AA	1			L				SPACER, Drive Pinion Bearing
9									SHIM, Axle
	05134415AA	1	2, 3, 6, 7						[4.90 MM]
	05134416AA	1	2, 3, 6, 7						[4.92 MM]
	05134417AA	1	2, 3, 6, 7						[4.94 MM]
	05134418AB	1	2, 3, 6, 7						[4.96 MM]
	05134419AA	1	2, 3, 6, 7						[5.00 MM]
	05134420AA	1	2, 3, 6, 7						[5.02 MM]
	05134421AA	1	2, 3, 6, 7						[5.04 MM]
	05134422AB	1	2, 3, 6, 7						[5.06 MM]
	05134423AA	1	2, 3, 6, 7						[5.12 MM]
	05134424AA	1	2, 3, 6, 7		L				[5.16 MM]
	05134425AA	1	2, 3, 6, 7		L				[5.20 MM]
	05134427AA	1	2, 3, 6, 7		L				[5.24 MM]
	05134428AA	1	2, 3, 6, 7		L				[5.28 MM]
	05134429AA	1	2, 3, 6, 7		L				[5.32 MM]
	05134430AA	1	2, 3, 6, 7		L				[5.36 MM]
	05134431AA	1	2, 3, 6, 7		L				[5.40 MM]
	05134432AA	1	2, 3, 6, 7		L				[5.50 MM]
	05134433AA	1	2, 3, 6, 7		L				[5.60 MM]
	05134434AA	1	2, 3, 6, 7		L				[5.72 MM]
	05134435AA	1	2, 3, 6, 7		L				[5.76 MM]
	05134436AA	1	2, 3, 6, 7		L				[5.80 MM]
	05134437AA	1	2, 3, 6, 7		L				[5.84 MM]
	05134438AA	1	2, 3, 6, 7		L				[5.88 MM]
	05134439AA	1	2, 3, 6, 7		L				[5.92 MM]
	05134440AA	1	2, 3, 6, 7		L				[5.96 MM]

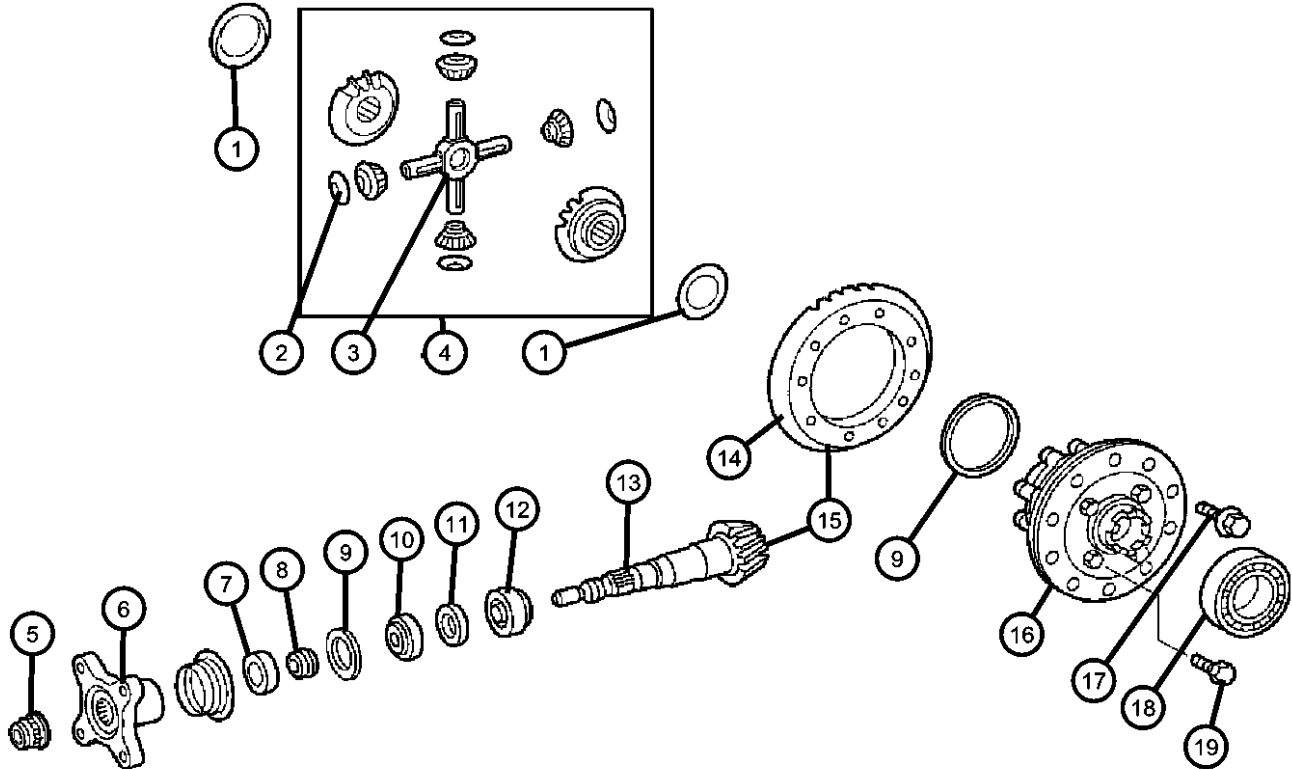


SPRINTER (VA)

SERIES	LINE	BODY	ENGINE	TRANSMISSION
L = LOWLINE	3 = HD DODGE 2WD 6 = Lt. Duty DODGE 4WD 2 = Med. Duty DODGE 2WD 7 = Med. Duty DODGE 4WD	01 = CHASSIS FORWARD CONTROL W.B.1 02 = CAB CHASSIS WHEEL BASE 2 06 = CAB CHASSIS WHEEL BASE 6 11 = VAN WHEEL BASE 1 12 = VAN WHEEL BASE 2 51 = WAGON WHEEL BASE 1 52 = WAGON WHEEL BASE 2 14 = VAN WHEEL BASE 4 15 = VAN WHEEL BASE 5 56 = WAGON WHEEL BASE 6 16 = VAN WHEEL BASE 6 54 = WAGON WHEEL BASE 4 55 = WAGON WHEEL BASE 5	EX9 = Engine-2.7L I5 Mercedes Turbo Diesel	DGJ = Transmission-5-Spd. Automatic,W5A580

AR = use ase required - = Non illustrated part

Internal Differential Parts,Rear
Figure 3-210



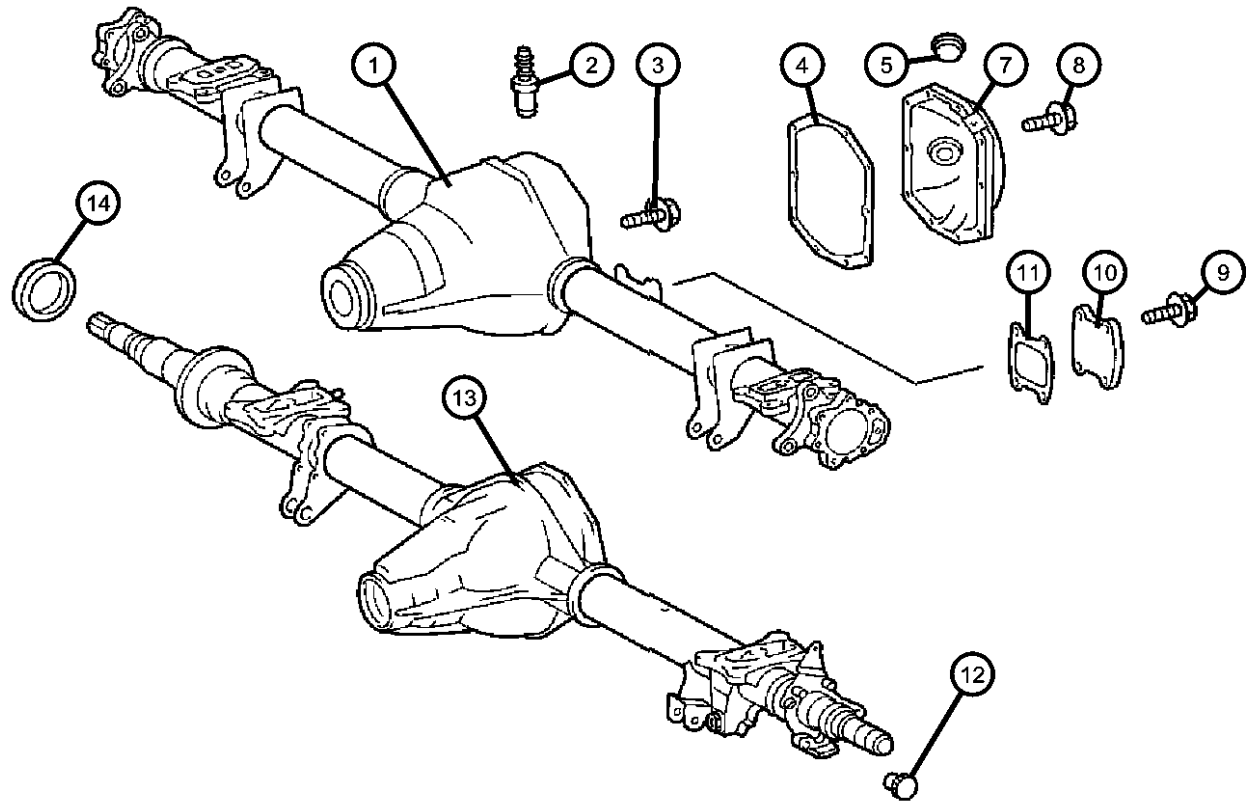
ITEM	PART NUMBER	QTY	LINE	SERIES	BODY	ENGINE	TRANS	TRIM	DESCRIPTION
	05134441AA	1	2, 3, 6, 7	L					[6.00 MM]
	05134466AA	1	2, 3, 6, 7	L					[6.10 MM]
	05134467AA	1	2, 3, 6, 7	L					[6.20 MM]
	05134469AA	1	2, 3, 6, 7	L					[6.38 MM]
10	05136772AA	1		L					BEARINGFront
11	05103900AA	1		L					SEAL, Drive Pinion
12	05134442AA	1		L					BEARING, Drive PinionRear
13	05136773AA	1	2, 3, 6, 7	L					PINION, Differential, [DME,BGK]
14	05136774AA	1		L					GEAR, Differential Ring, [DME,BGK]
15	05136156AA	1	2, 3, 6, 7	L	11, 12, 14, 15, 16				GEAR KIT, Ring And Pinion [DMF,BGK]
		1	2, 3, 6, 7	L	51, 52, 54, 55, 56				[DMF,BGK]
16	05104557AA	1	2, 6	L	11, 12, 14, 15, 16				CASE, Differential [DME,BGK]
		1	2, 6	L	51, 52, 54, 55, 56				[DME,BGK]
	05136171AA	1	3, 7		11, 12, 14, 15, 16				[DME]
	05136172AA	1	3, 7		11, 12, 14, 15, 16				[DMF]
	05137618AA	1	2, 3, 6, 7						[DME]
17	05103849AA	10	2, 3, 6, 7	L					BOLT, Ring Gear, Mounting
18	05097700AA	1	2, 3, 6, 7						BEARING, Differential
19	05136178AA	8							SCREW, Differential, Differential Case Half, Mounting

SPRINTER (VA)

SERIES	LINE	BODY	ENGINE	TRANSMISSION
L = LOWLINE	3 = HD DODGE 2WD 6 = Lt. Duty DODGE 4WD 2 = Med. Duty DODGE 2WD 7 = Med. Duty DODGE 4WD	01 = CHASSIS FORWARD CONTROL W.B.1 02 = CAB CHASSIS WHEEL BASE 2 06 = CAB CHASSIS WHEEL BASE 6 11 = VAN WHEEL BASE 1 12 = VAN WHEEL BASE 2 51 = WAGON WHEEL BASE 1 52 = WAGON WHEEL BASE 2 14 = VAN WHEEL BASE 4 15 = VAN WHEEL BASE 5 56 = WAGON WHEEL BASE 6 16 = VAN WHEEL BASE 6 54 = WAGON WHEEL BASE 4 55 = WAGON WHEEL BASE 5	EX9 = Engine-2.7L I5 Mercedes Turbo Diesel	DGJ = Transmission-5-Spd. Automatic,W5A580

AR = use ase required - = Non illustrated part

Differential Housing,Rear
Figure 3-220



ITEM	PART NUMBER	QTY	LINE	SERIES	BODY	ENGINE	TRANS	TRIM	DESCRIPTION
1	05136178AA	8							HOUSING, Rear Axle, (NOT SERVICED)
2									VENT, Axle
	05134368AA	1	3, 7	L	12, 15, 16				
		1	2, 6	L	11, 12, 14, 15, 16				
		1	2, 6	L	51, 52, 54, 55, 56				
3									BOLT, Hex Head
	06104225AA	4	3, 7	L	12, 15, 16				Carrier Bearing Cap, Mounting
		4	2, 6	L	11, 12, 14, 15, 16				Carrier Bearing Cap, Mounting
		4	2, 6	L	51, 52, 54, 55, 56				Carrier Bearing Cap, Mounting
4	05103574AA	1	2, 3, 6, 7						GASKET, Differential CoverMounting
5	05097712AA	1	2, 3, 6, 7						PLUG, Oil Drain, Oil Filling and Oil Drain
-6	05134372AA	1	2, 3, 6, 7						GASKET, Oil Filling and Oil Drain Plug, Mounting
7									COVER, Differential
	05103953AA	1	3, 7	L	12, 15, 16				
		1	2, 6	L	11, 12, 14, 15, 16				
		1	2, 6	L	51, 52, 54, 55, 56				
8	05134371AA	10	2, 3, 6, 7						SCREW AND WASHER, Differential Cover, Mounting
9									SCREW
	06104195AA	4	2, 6	L	11, 12, 14, 15, 16				Axle Housing Cover, Mounting
		4	2, 6	L	51, 52, 54, 55, 56				Axle Housing Cover, Mounting
10									COVER
	05134668AA	1	2, 6	L	11, 12, 14, 15, 16				Axle Housing

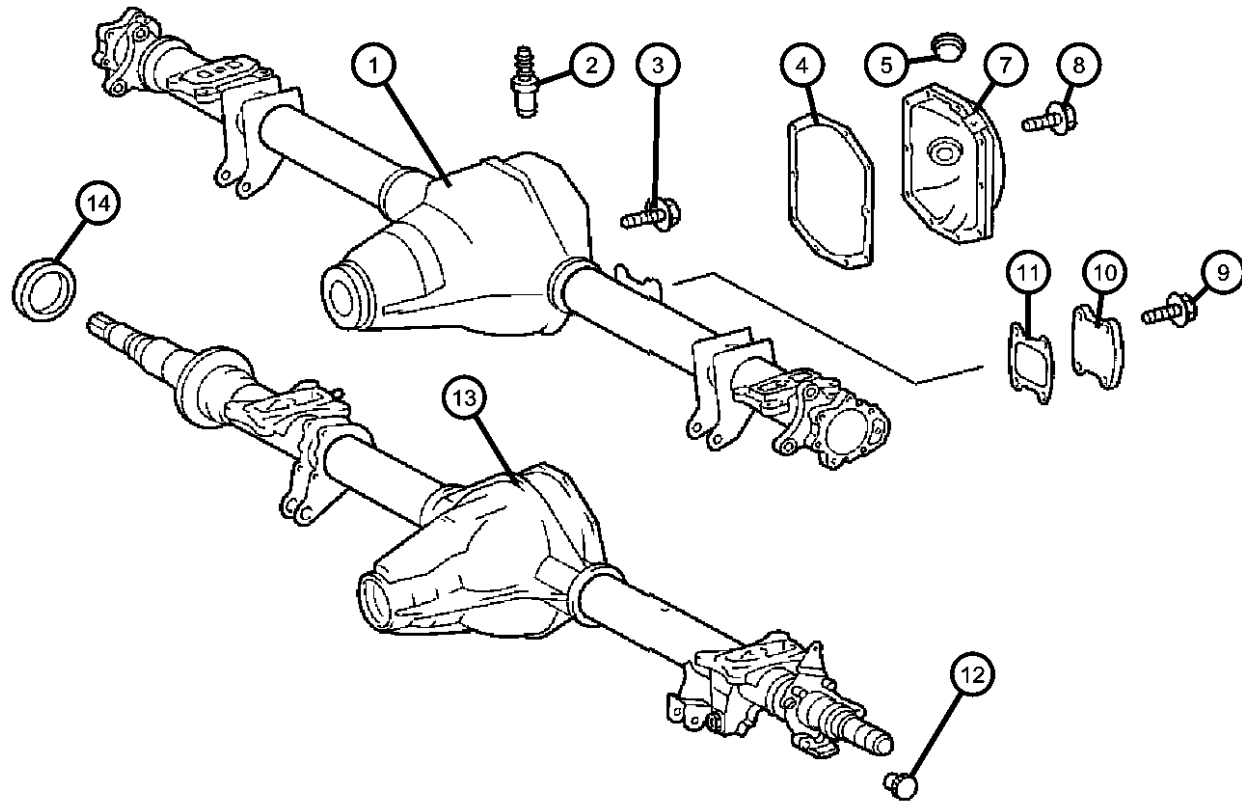
SPRINTER (VA)

SERIES	LINE	BODY	ENGINE	TRANSMISSION
L = LOWLINE	3 = HD DODGE 2WD 6 = Lt. Duty DODGE 4WD 2 = Med. Duty DODGE 2WD 7 = Med. Duty DODGE 4WD	01 = CHASSIS FORWARD CONTROL W.B.1 02 = CAB CHASSIS WHEEL BASE 2 06 = CAB CHASSIS WHEEL BASE 6 11 = VAN WHEEL BASE 1 12 = VAN WHEEL BASE 2 51 = WAGON WHEEL BASE 1 52 = WAGON WHEEL BASE 2 14 = VAN WHEEL BASE 4 15 = VAN WHEEL BASE 5 56 = WAGON WHEEL BASE 6 16 = VAN WHEEL BASE 6 54 = WAGON WHEEL BASE 4 55 = WAGON WHEEL BASE 5	EX9 = Engine-2.7L I5 Mercedes Turbo Diesel	DGJ = Transmission-5-Spd. Automatic,W5A580

AR = use ase required - = Non illustrated part

Differential Housing,Rear
Figure 3-220

ITEM	PART NUMBER	QTY	LINE	SERIES	BODY	ENGINE	TRANS	TRIM	DESCRIPTION
		1	2, 6	L	51, 52, 54, 55, 56				Axle Housing
11	05134669AA	1	2, 6	L	11, 12, 14, 15, 16				GASKET Axle Housing Cover, Mounting
		1	2, 6	L	51, 52, 54, 55, 56				Axle Housing Cover, Mounting
12	05134667AA	2	3, 7	L	12, 15, 16				PLUG, To Lock Holes for ABS
13	05139133AA	1	3, 7	L	12, 15, 16				HOUSING, Rear Axle, For Dual Rear Wheels
14									THRUST RING
	05104027AA	1	3, 7	L	12, 15, 16				Right
	05134665AA	1	3, 7	L	12, 15, 16				Left



SPRINTER (VA)

SERIES

L = LOWLINE
 3 = HD DODGE 2WD
 6 = Lt. Duty DODGE 4WD
 2 = Med. Duty DODGE 2WD
 7 = Med. Duty DODGE 4WD

LINE

BODY

01 = CHASSIS FORWARD CONTROL W.B.1
 02 = CAB CHASSIS WHEEL BASE 2
 06 = CAB CHASSIS WHEEL BASE 6
 11 = VAN WHEEL BASE 1
 12 = VAN WHEEL BASE 2
 51 = WAGON WHEEL BASE 1
 52 = WAGON WHEEL BASE 2
 14 = VAN WHEEL BASE 4
 15 = VAN WHEEL BASE 5
 56 = WAGON WHEEL BASE 6
 16 = VAN WHEEL BASE 6
 54 = WAGON WHEEL BASE 4
 55 = WAGON WHEEL BASE 5

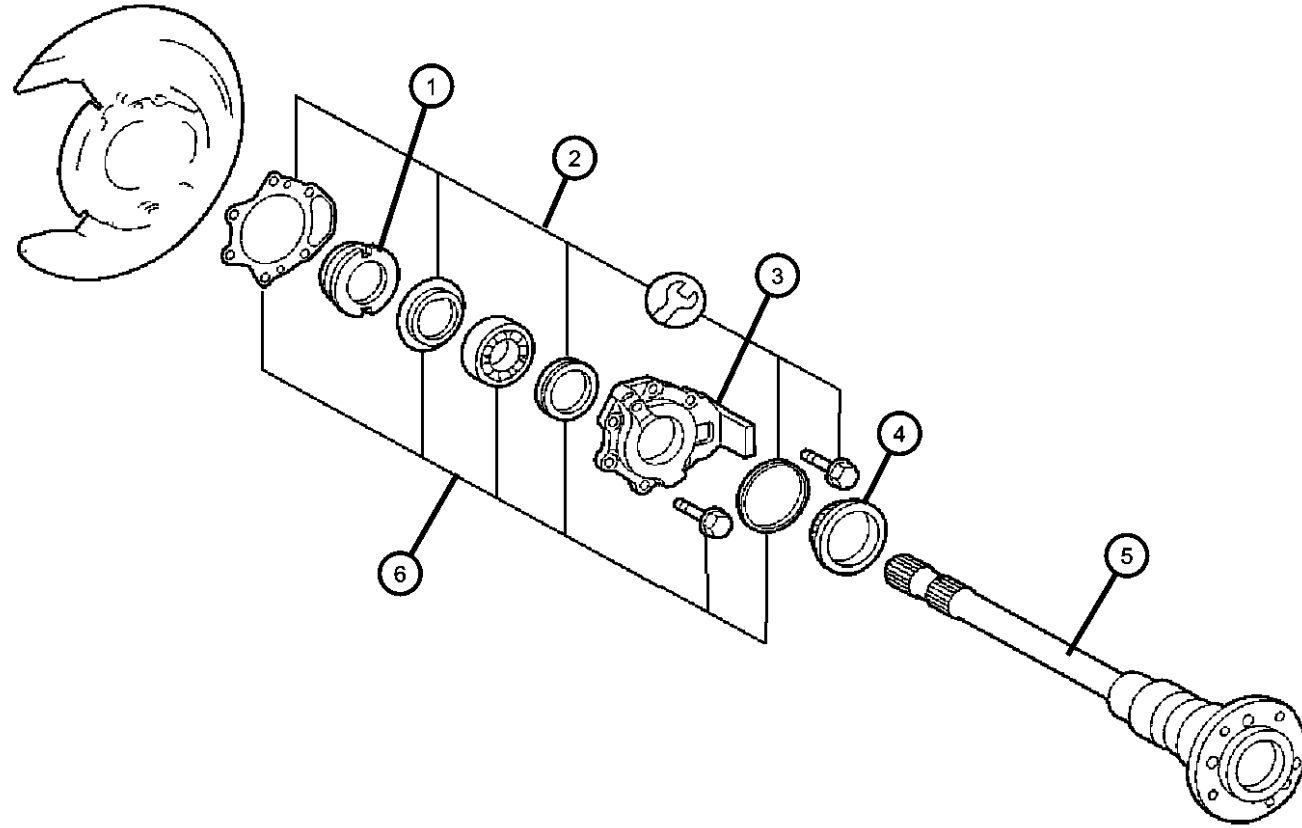
ENGINE

EX9 = Engine-2.7L I5
 Mercedes Turbo Diesel

TRANSMISSION

DGJ = Transmission-5-Spd. Automatic,W5A580

Axle Shaft and Wheel Bearings, Single Rear Wheels
Figure 3-230



ITEM	PART NUMBER	QTY	LINE	SERIES	BODY	ENGINE	TRANS	TRIM	DESCRIPTION
1	05134634AA	1	2, 6	L	11, 12, 14, 15, 16				NUT, Axle shaft Right
		1	2, 6	L	51, 52, 54, 55, 56				Right
	05134635AA	1	2, 6	L	11, 12, 14, 15, 16				Left
		1	2, 6	L	51, 52, 54, 55, 56				Left
2	05104559AA	2	2, 6	L	11, 12, 14, 15, 16				SEAL KIT, Axle shaft
		2	2, 6	L	51, 52, 54, 55, 56				
3	05134636AA	1	2, 6	L	11, 12, 14, 15, 16				COVER, Axle bearing Up To Rear Axle L833737 or X246061 or Z122707, Right
		1	2, 6	L	51, 52, 54, 55, 56				
	05134637AA	1	2, 6	L	11, 12, 14, 15, 16				Up To Rear Axle L833737 or X246061 or Z122707, Left
		1	2, 6	L	51, 52, 54, 55, 56				
	05134638AA	1	2, 6	L	11, 12, 14, 15, 16				From Rear Axle L833738 or X246062 or Z122708, Right
		1	2, 6	L	51, 52, 54, 55, 56				
05134639AA	1	2, 6	L	11, 12, 14, 15, 16				From Rear Axle L833738 or X246062 or Z122708, Left	
	1	2, 6	L	51, 52, 54, 55, 56					From Rear Axle L833738 or X246062 or Z122708, Left
4	05134640AA	2	2, 6	L	11, 12, 14, 15, 16				TONE RING, Sensor Up To Axle L653742 or X094896 or Z020253
		2	2, 6	L	51, 52, 54, 55, 56				
	05134641AA	2	2, 6	L	11, 12, 14, 15, 16				From Axle L653743 or X0904897 or Z020254

SPRINTER (VA)

SERIES

L = LOWLINE
 3 = HD DODGE 2WD
 6 = Lt. Duty DODGE 4WD
 2 = Med. Duty DODGE 2WD
 7 = Med. Duty DODGE 4WD

LINE

01 = CHASSIS FORWARD
 CONTROL W.B.1
 02 = CAB CHASSIS WHEEL
 BASE 2
 06 = CAB CHASSIS WHEEL
 BASE 6
 11 = VAN WHEEL BASE 1
 12 = VAN WHEEL BASE 2
 51 = WAGON WHEEL BASE 1
 52 = WAGON WHEEL BASE 2
 14 = VAN WHEEL BASE 4
 15 = VAN WHEEL BASE 5
 56 = WAGON WHEEL BASE 6
 16 = VAN WHEEL BASE 6
 54 = WAGON WHEEL BASE 4
 55 = WAGON WHEEL BASE 5

BODY

EX9 = Engine-2.7L I5
 Mercedes Turbo Diesel

ENGINE

DGJ = Transmission-5-Spd.
 Automatic, W5A580

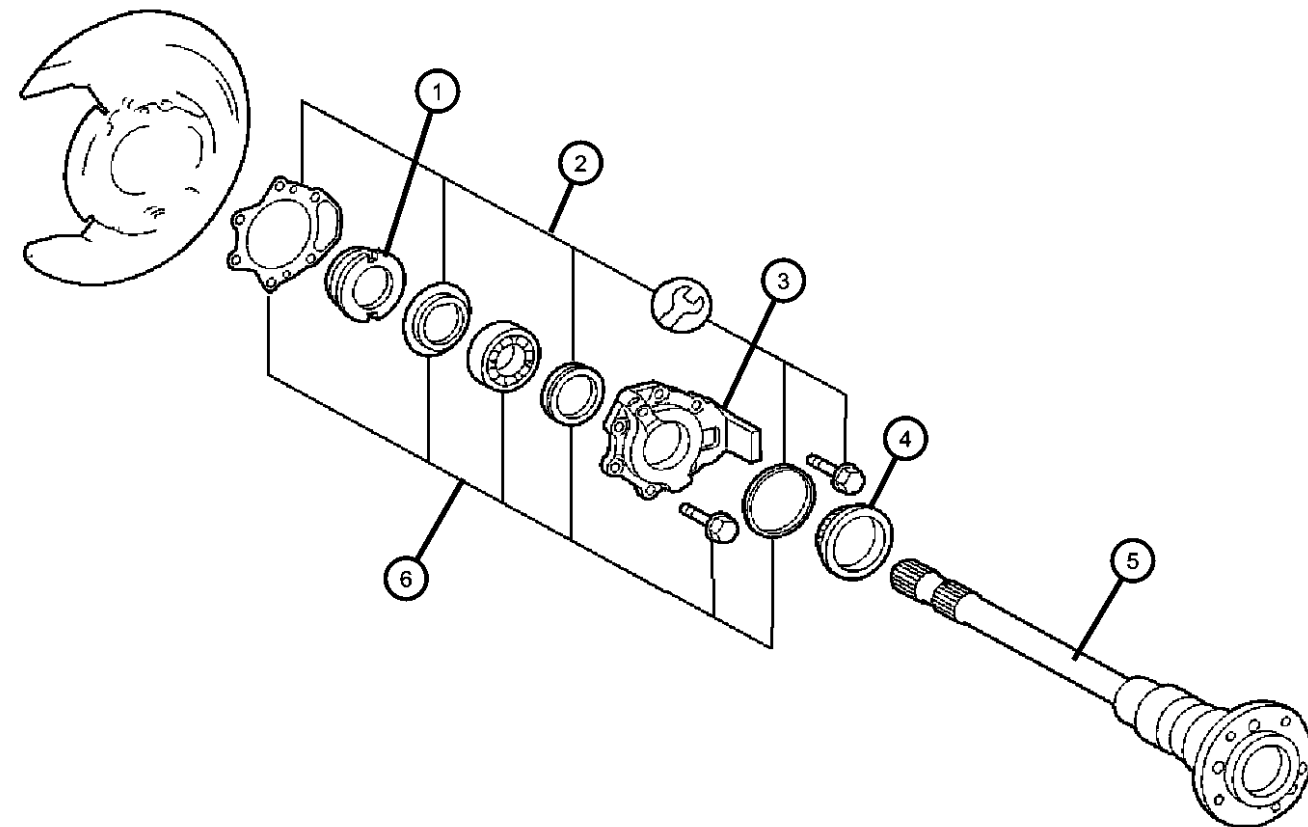
TRANSMISSION

AR = use ase required - = Non illustrated part

2002 VA

Axle Shaft and Wheel Bearings, Single Rear Wheels

Figure 3-230



ITEM	PART NUMBER	QTY	LINE	SERIES	BODY	ENGINE	TRANS	TRIM	DESCRIPTION
5		2	2, 6	L	51, 52, 54, 55, 56				From Axle L653743 or X0904897 or Z020254 SHAFT, Axle
	05134658AA	1	2, 6	L	11, 12, 14, 15, 16				Up To Rear Axle L874988 or X304860 or Z161213, Right
		1	2, 6	L	51, 52, 54, 55, 56				Up To Rear Axle L874988 or X304860 or Z161213, Right
	05134659AA	1	2, 6	L	11, 12, 14, 15, 16				Up To Rear Axle L874988 or X304860 or Z161213, Left
		1	2, 6	L	51, 52, 54, 55, 56				Up To Rear Axle L874988 or X304860 or Z161213, Left
	05134660AA	1	2, 6	L	11, 12, 14, 15, 16				From Rear Axle L874989 or X304861 or Z161214, Right
		1	2, 6	L	51, 52, 54, 55, 56				From Rear Axle L874989 or X304861 or Z161214, Right
	05134661AA	1	2, 6	L	11, 12, 14, 15, 16				From Rear Axle L874989 or X304861 or Z161214, Left
		1	2, 6	L	51, 52, 54, 55, 56				From Rear Axle L874989 or X304861 or Z161214, Left
6		2	2, 6	L	11, 12, 14, 15, 16				BEARING KIT, Axle shaft
	05103601AA	2	2, 6	L	11, 12, 14, 15, 16				
		2	2, 6	L	51, 52, 54, 55, 56				

SPRINTER (VA)

SERIES	LINE	BODY	ENGINE	TRANSMISSION
L = LOWLINE	3 = HD DODGE 2WD 6 = Lt. Duty DODGE 4WD 2 = Med. Duty DODGE 2WD 7 = Med. Duty DODGE 4WD	01 = CHASSIS FORWARD CONTROL W.B.1 02 = CAB CHASSIS WHEEL BASE 2 06 = CAB CHASSIS WHEEL BASE 6 11 = VAN WHEEL BASE 1 12 = VAN WHEEL BASE 2 51 = WAGON WHEEL BASE 1 52 = WAGON WHEEL BASE 2 14 = VAN WHEEL BASE 4 15 = VAN WHEEL BASE 5 56 = WAGON WHEEL BASE 6 16 = VAN WHEEL BASE 6 54 = WAGON WHEEL BASE 4 55 = WAGON WHEEL BASE 5	EX9 = Engine-2.7L I5 Mercedes Turbo Diesel	DGJ = Transmission-5-Spd. Automatic, W5A580

AR = use ase required - = Non illustrated part

<< RETURN TO GROUP INDEX

This is the cut pages sample. Download all 630 page(s) at: ManualPlace.com