

Mazda6 F/L Mazda6 MPS Wiring Diagram

FOREWORD

This wiring diagram incorporates the wiring schematics of the Mazda 6 F/L and available optional equipment. Actual vehicle wiring may vary slightly depending on optional equipment or local specifications, or both.

For proper repair and maintenance, a thorough familiarization with this manual is important, and it should always be kept in a handy place for quick and easy reference.

All the contents of this manual, including drawings and specifications, are the latest available at the time of printing.

As modifications affecting repair or maintenance occur, relevant information supplementary to this volume will be made available at Mazda dealers. This manual should be kept up-to-date.

Mazda Motor Corporation reserves the right to alter the specifications and contents of this manual without obligation or advance notice.

All rights reserved. No part of this book may be reproduced or used in any form or by any means, electronic or mechanical-including photocopying and recording and the use of any kind of information storage and retrieval system-without permission in writing.

Mazda Motor Corporation
HIROSHIMA, JAPAN

CONTENTS

TITLE	SECTION		
	PREVIOUS	NEW	
GENERAL INFORMATION	GI (GENERAL INFORMATION)	00	
	W (ELECTRICAL WIRING SCHEMATIC)		
	FB (FUSE BLOCK)		
	JB (JOINT BOX)		
	X (COMMON CONNECTOR)		
	Y (GROUND POINT)		
ENGINE	U (DATA LINK CONNECTOR)	01	
	A (CHARGING SYSTEM/ STARTING SYSTEM)		
	B (ENGINE CONTROL SYSTEM)		
SUSPENSION	Q (CRUISE CONTROL SYSTEM)	02	
DRIVELINE/AXLE	—	03	
BRAKES	—	04	
TRANSMISSION/ TRANSAXLE	O (ANTI-LOCK BRAKE SYSTEM)		
STEERING	H (EC-AT CONTROL SYSTEM)	05	
HEATER, VENTILATION & AIR CONDITIONING (HVAC)	N (ELECTRIC POWER STEERING SYSTEM)	06	
RESTRAINTS	G (AIR CONDITIONING SYSTEM)	07	
BODY & ACCESSORIES	S (SEAT BELT/AIR BAG SYSTEM)	08	
	C (GAUGE CONTROL SYSTEM)		
	D (WIPER SYSTEM)		
	E (EXTERIOR LIGHTING SYSTEM)		
	F (SIGNAL SYSTEM)		
	I (INTERIOR LIGHTING SYSTEM)		
	J (AUDIO SYSTEM)		09
	K (DOOR/WINDOW SYSTEM)		
	L (MIRROR SYSTEM)		
	M (SUNROOF SYSTEM)		
	P (POWER SEAT SYSTEM)		
	T (SECURITY AND LOCKS SYSTEM/OPTION)		
ALPHABETICAL INDEX	AI (ALPHABETICAL INDEX)	AI	

©

Mazda Motor Corporation

APPLICATION:

This manual is applicable to vehicles beginning with the Vehicle Identification Numbers (VIN) shown on the following page.

**VEHICLE IDENTIFICATION NUMBERS (VIN)
(CHASSIS NUMBERS)**

JMZ GG1**# 600001-**

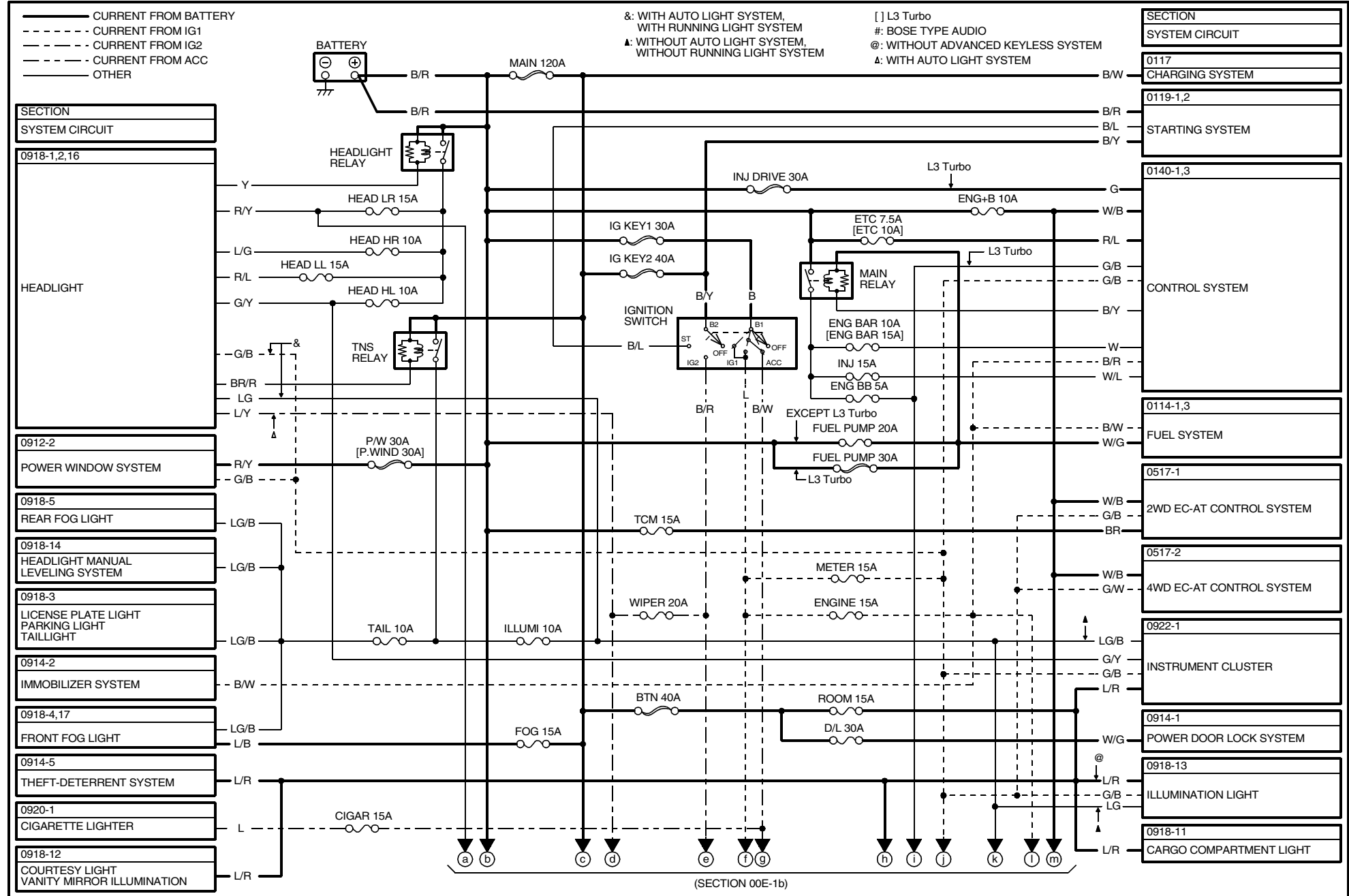
JMZ GG8**# 600001-**

JMZ GY1**# 400001-**

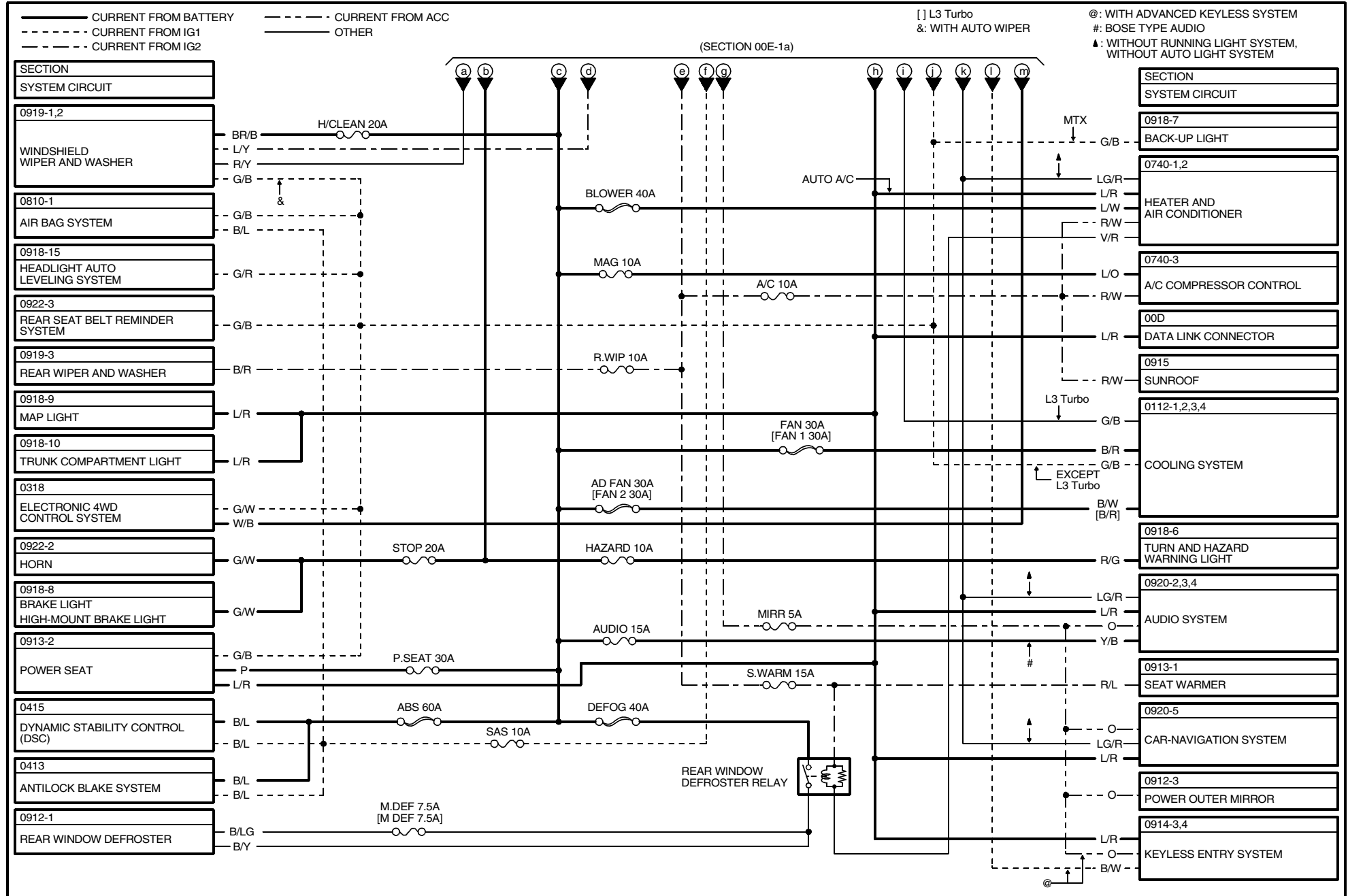
JMZ GY8**# 400001-**

ELECTRICAL WIRING SCHEMATIC (EXCEPT MZR-CD(RF Turbo))

00E-1a



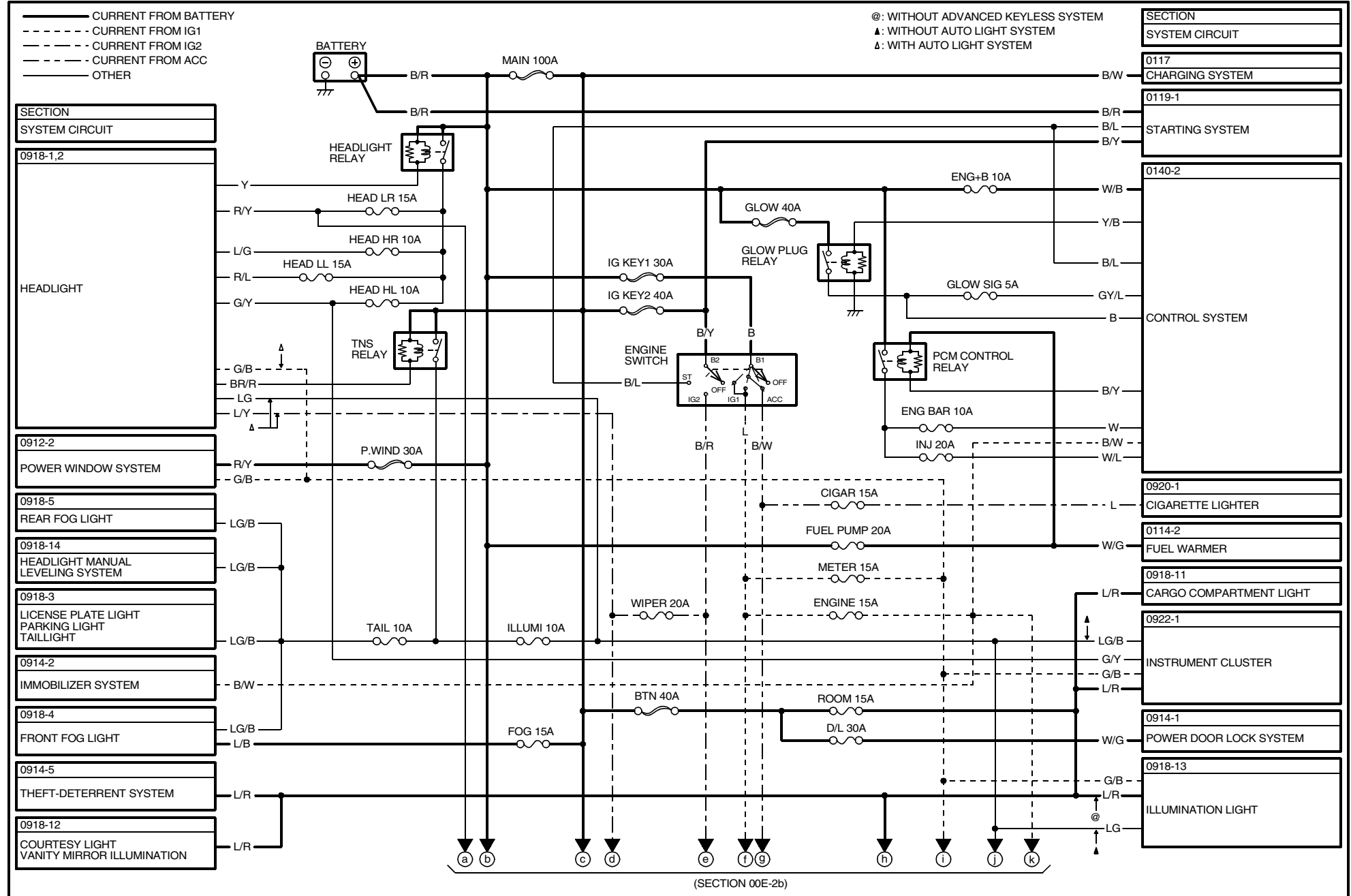
ELECTRICAL WIRING SCHEMATIC (EXCEPT MZR-CD(RF Turbo))



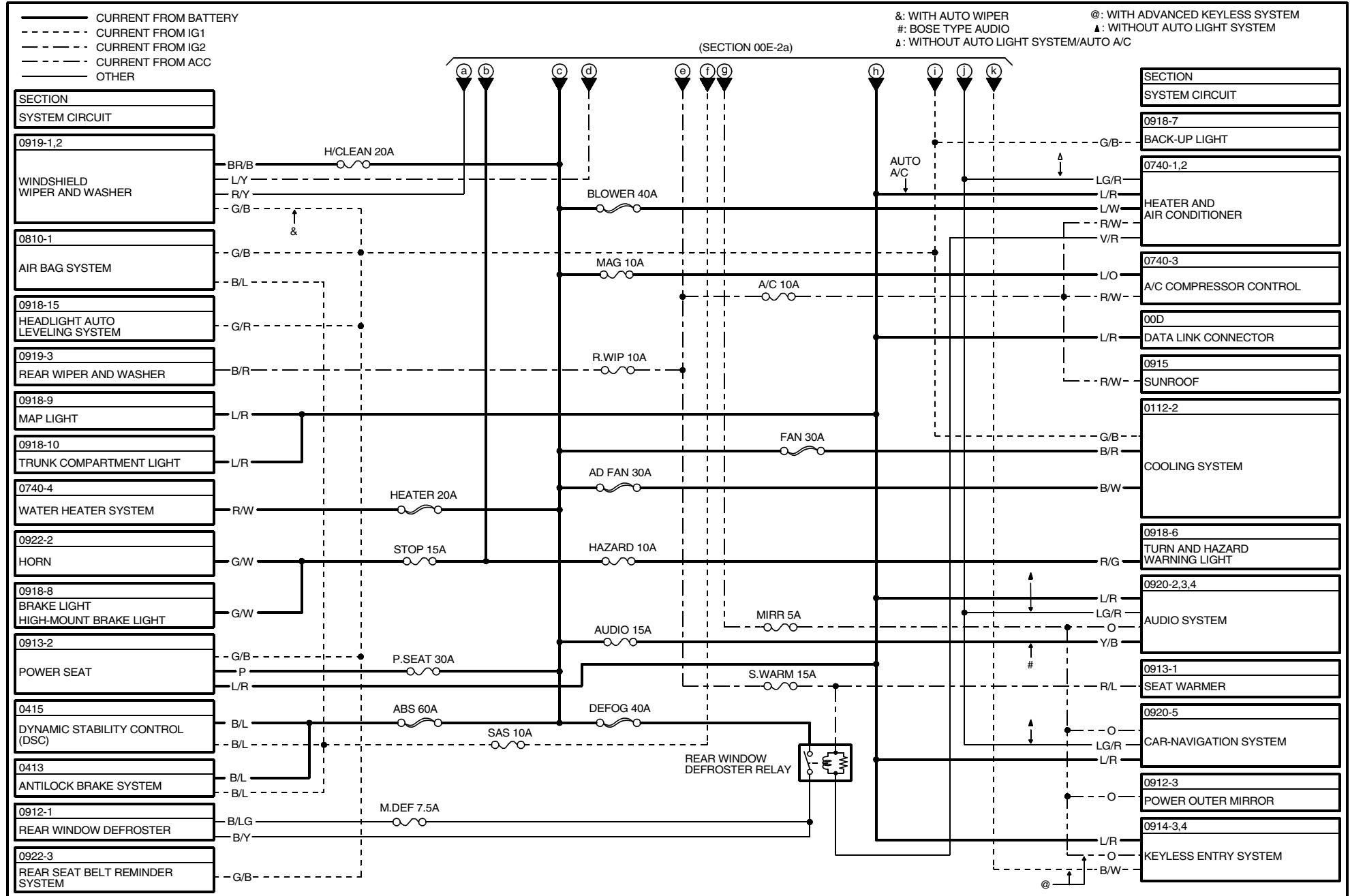
ELECTRICAL WIRING SCHEMATIC (MZR-CD (RF Turbo))

00E-2a

20



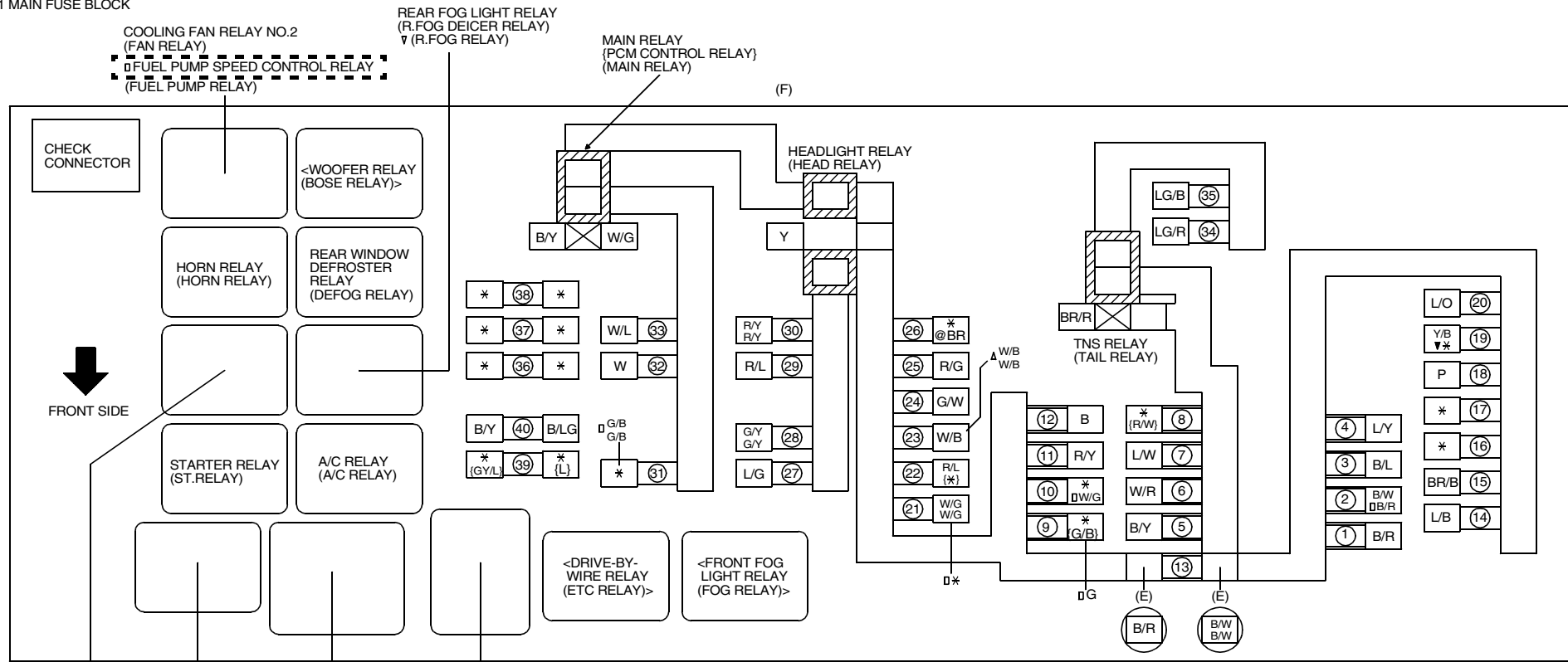
ELECTRICAL WIRING SCHEMATIC (MZR-CD (RF Turbo))



FUSE BOX

00F-1

F-01 MAIN FUSE BLOCK



22

- COOLING FAN RELAY NO.3 (AD FAN#3 RELAY)
- FUEL PUMP RELAY (CIRCUIT RELAY)
- ▲ COOLING FAN RELAY NO.3 (AD FAN#3 RELAY)
- COOLING FAN RELAY NO.4 (FAN#2 RELAY)
- FUEL INJECTOR RELAY (INJ RELAY)
- @ AT MAIN RELAY (AT MAIN RELAY)
- { GLOW PLUG RELAY (GLOW RELAY)
- { COOLING FAN RELAY (COOLING FAN RELAY)
- < COOLING FAN RELAY NO.1 (AD FAN RELAY)>

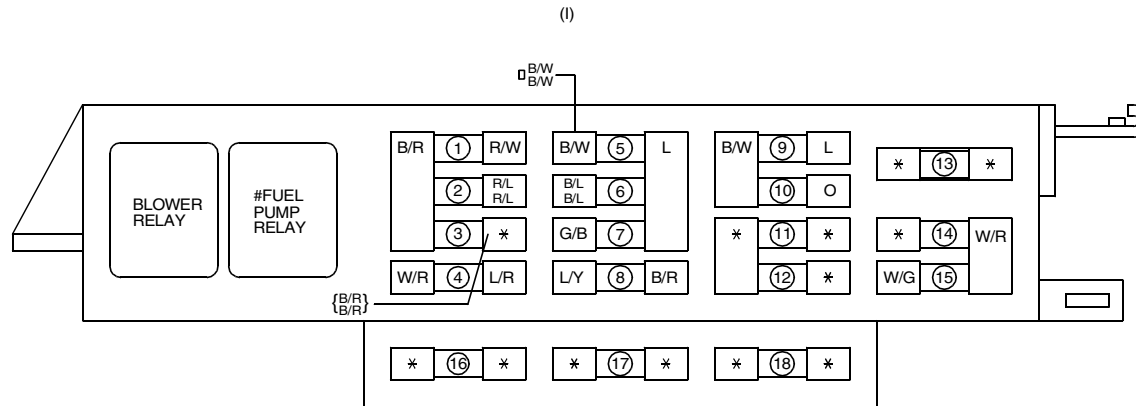
① FAN 30A □ FAN 1 30A	⑪ P/W 30A ▽ P.WIND 30A	⑳ <FUEL PUMP 20A>	⑳ <ENG BB 5A>
② AD FAN 30A □ FAN 2 30A	⑫ IG KEY1 30A	㉒ #ETC 7.5A □ ETC 10A	⑳ ENG BAR 10A □ ENG BAR 15A
③ ABS 60A	⑬ MAIN 120A { MAIN 100A}	⑳ ENG+B 10A	⑳ INJ 15A { INJ 20A}
④ DEFOG 40A	⑭ <FOG 15A>	⑳ STOP 20A { STOP 15A}	⑳ ILLUMI 10A
⑤ IG KEY2 40A	⑮ H/CLEAN 20A	㉓ HAZARD 10A	⑳ TAIL 10A
⑥ BTN 40A	⑯ ——— { DEICER 15A}	㉔ @TCM 15A { DRL 15A}	⑳ SPARE 10A
⑦ BLOWER 40A	⑰ ———	⑳ HEAD HR 10A	⑳ SPARE 15A
⑧ <HEATER 20A>	⑱ <P.SEAT 30A>	⑳ HEAD HL 10A	⑳ SPARE 20A
⑨ <GLOW 40A> □ INJ DRIVE 30A	⑲ <AUDIO 15A>	⑳ HEAD LL 15A	⑳ <GLOW SIG 5A>
⑩ <FUEL PUMP 30A>	㉑ MAG 10A	⑳ HEAD LR 15A	⑳ M.DEF 7.5A □ M DEF 7.5A

- { } MZR-CD(RF Turbo)
- () NAME INDICATED ON FUSE BOX COVER
- < > IF EQUIPPED
- [] NOT USED
- @: ATX/2WD
- #: L3, LF, L8
- ▲: L3
- ▽: MZR-CD(RF Turbo)/STANDARD TYPE AUDIO
- : LF(FOR INTENSELY HOT AREA)
- : L3 Turbo
- ▽: MZR-CD(RF Turbo), L3 Turbo
- ▲: ATX, L3 Turbo
- *: VACANT

FUSE BOX

F-02 FUSE BLOCK

23



①	A/C 10A	⑩	MIRR 5A
②	S.WARM 15A	⑪	—
③	#R.WIP 10A	⑫	—
④	ROOM 15A	⑬	<IG1 P/W 30A>
⑤	ENGINE 15A	⑭	<P/W 20A>
⑥	SAS 10A	⑮	D/L 30A
⑦	METER 15A	⑯	SPARE 20A
⑧	WIPER 20A	⑰	SPARE 15A
⑨	CIGAR 15A	⑱	SPARE 10A

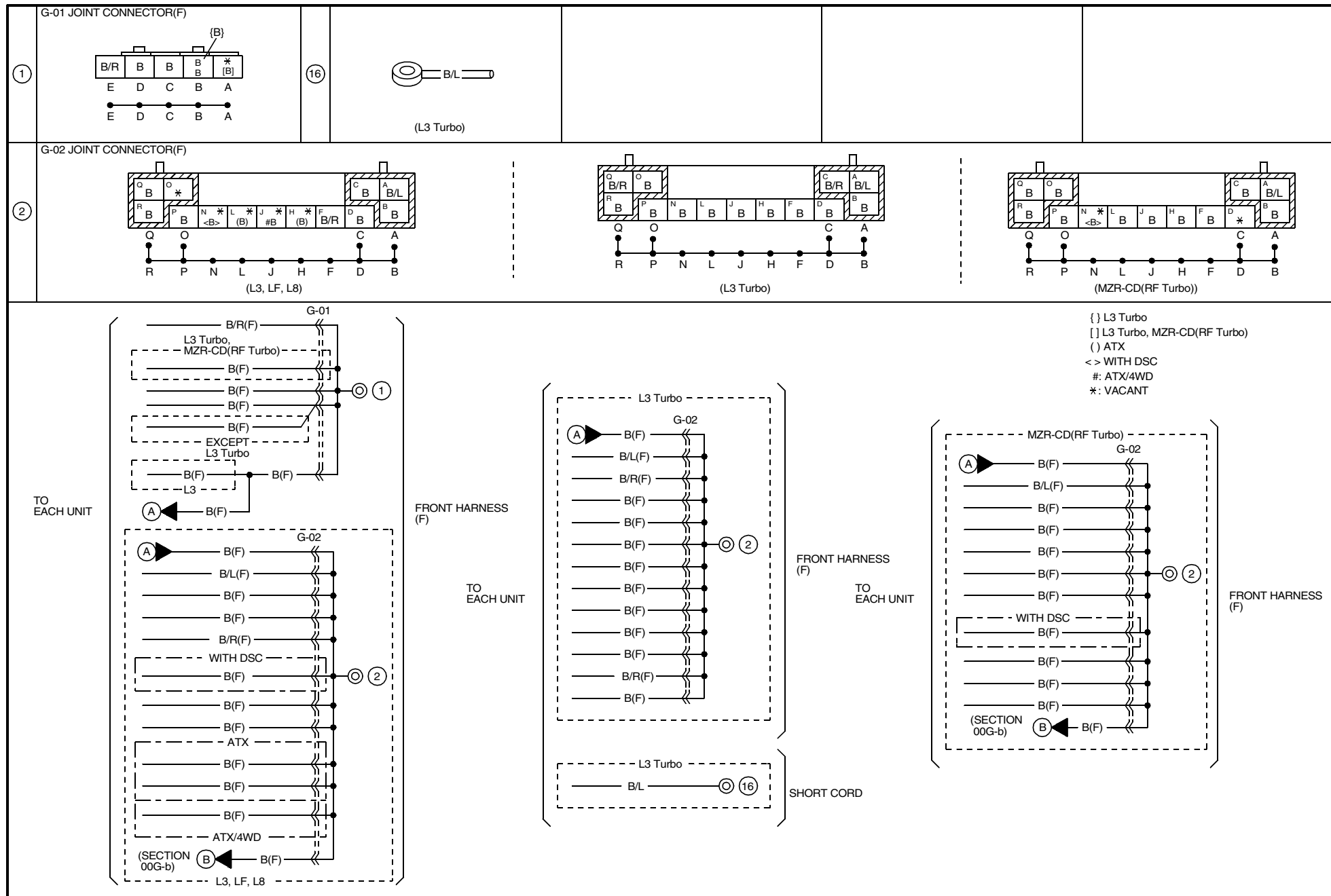
{ } WITH REAR WIPER AND WASHER

< > NOT USED

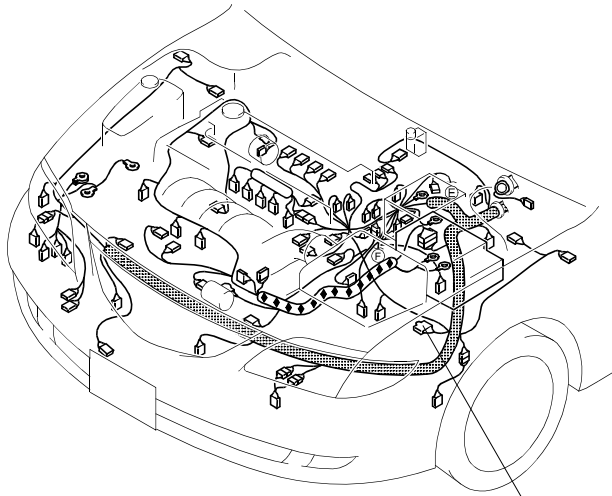
#: IF EQUIPPED

□: L3 Turbo

*: VACANT

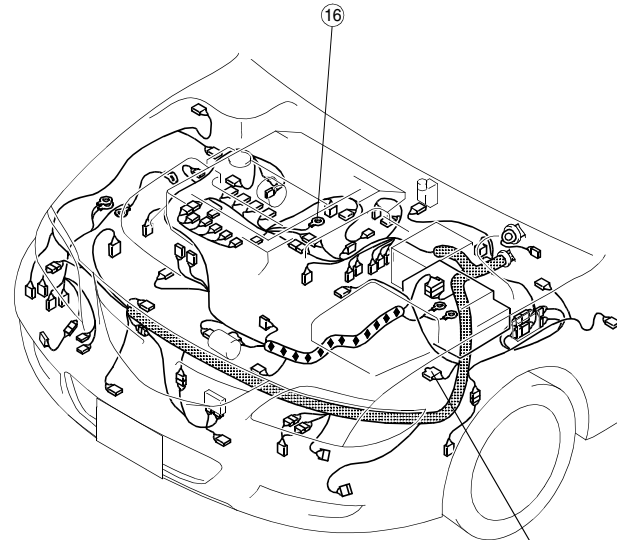


HARNESS SYMBOL :  (F)  (E)  (D)  (R)



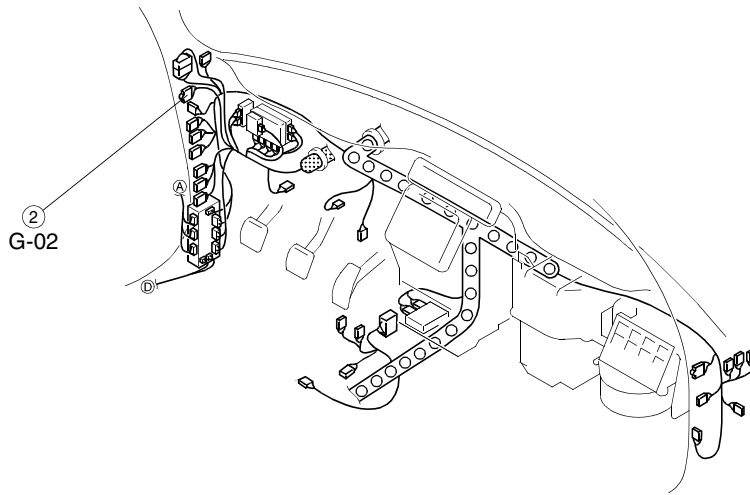
[EXCEPT L3 Turbo]

①
G-01



[L3 Turbo]

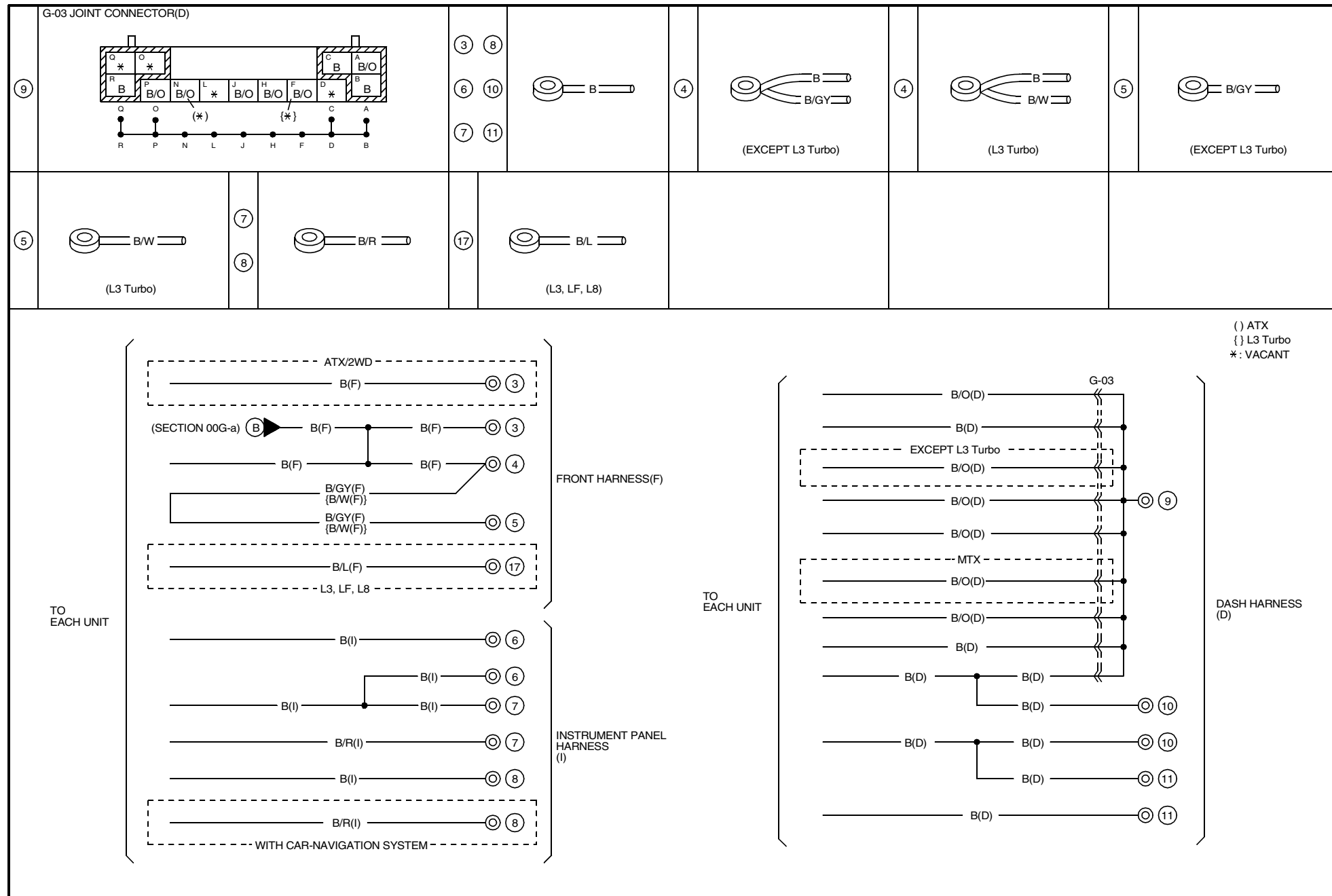
①
G-01



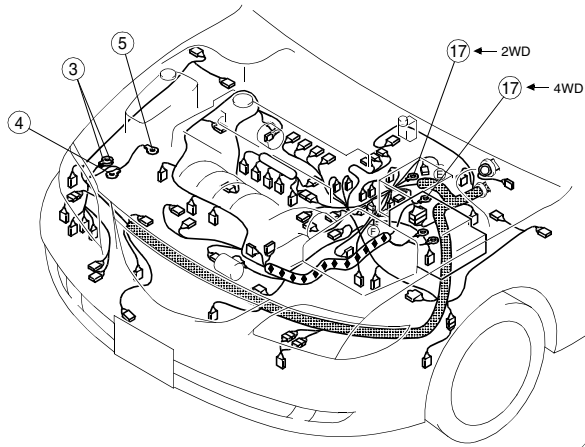
②
G-02

GROUND POINT

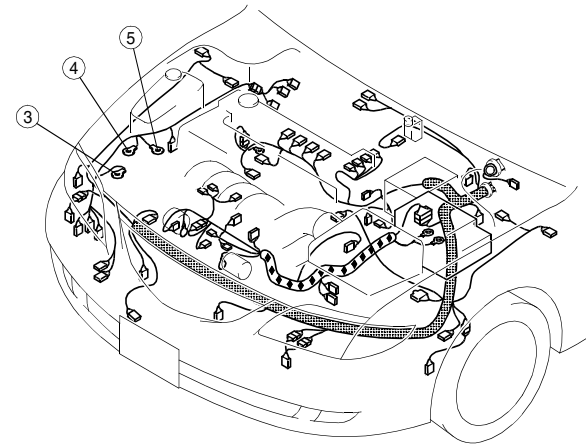
00G-b



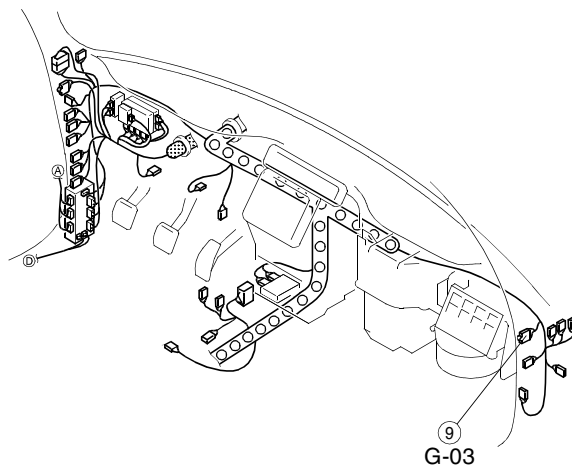
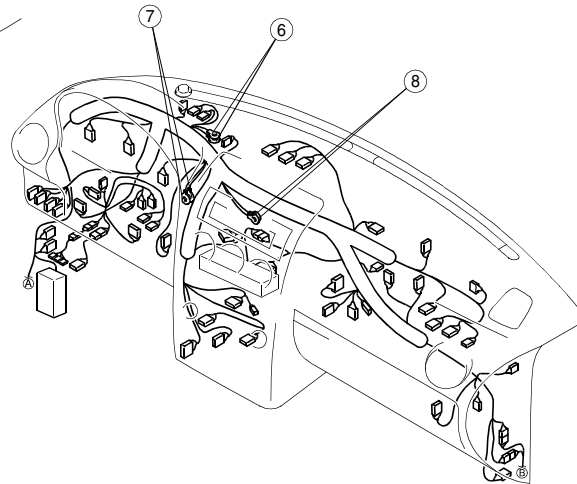
HARNES SYMBOL :  (F)  (E)  (D)  (R)



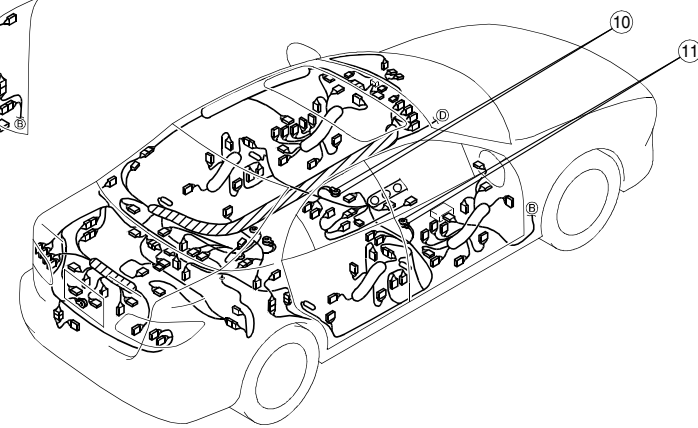
[EXCEPT MZR-CD (RF Turbo)]



[MZR-CD (RF Turbo)]

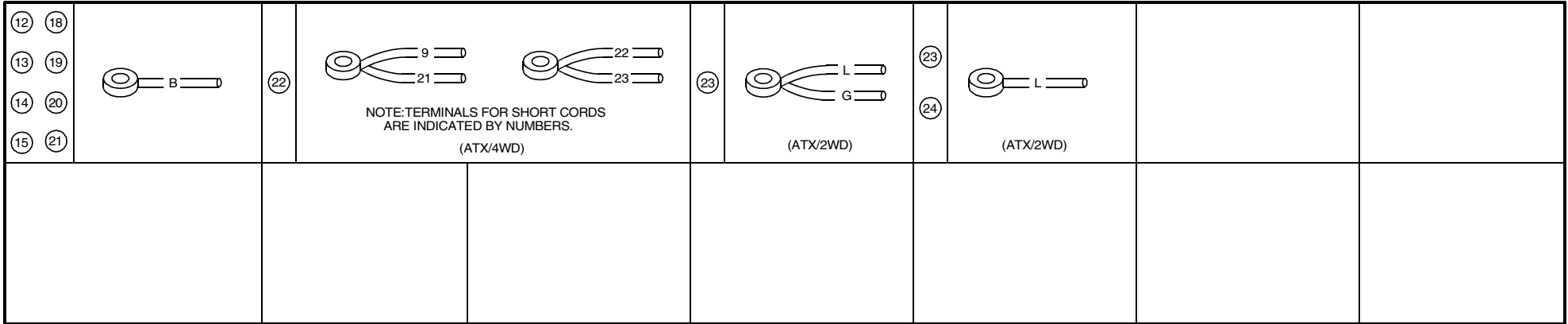


G-03

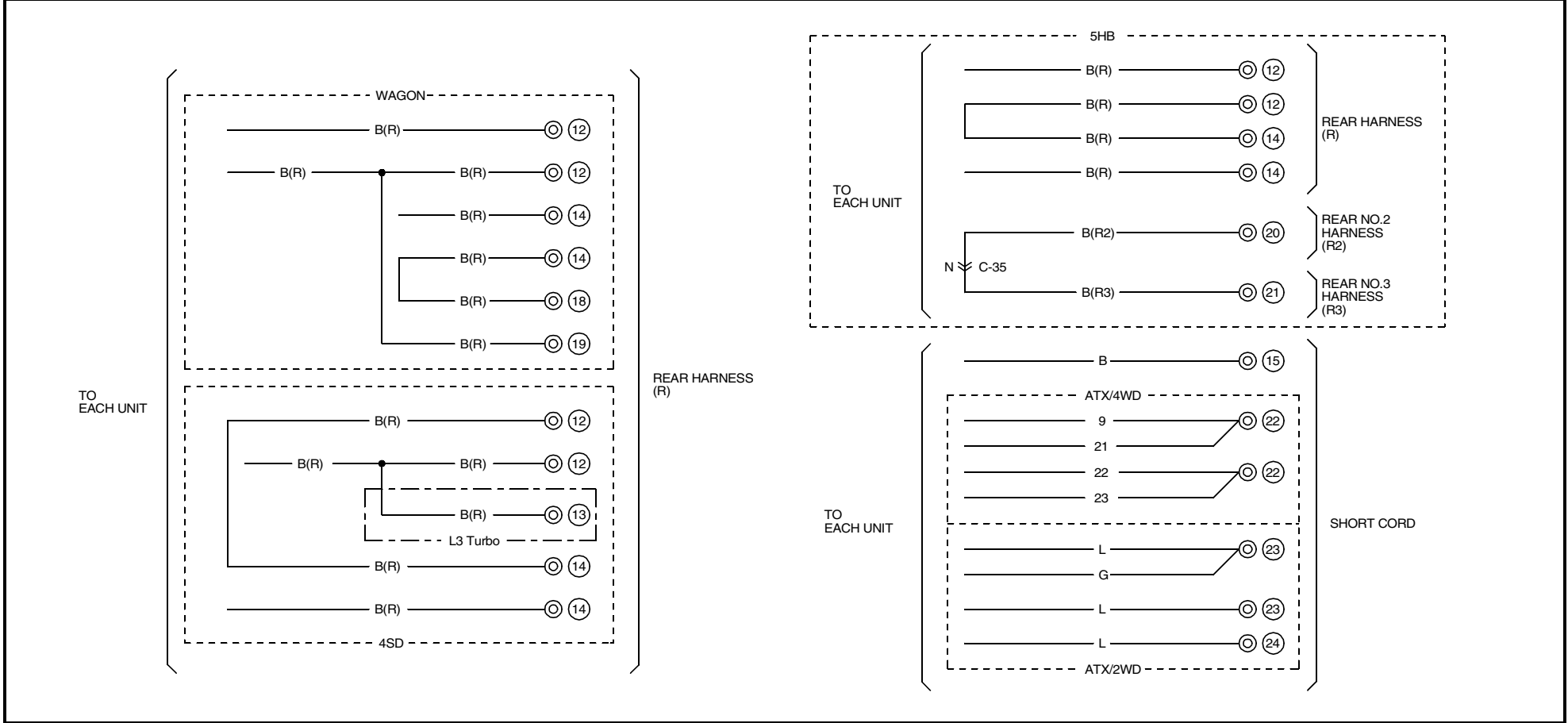


GROUND POINT

00G-c

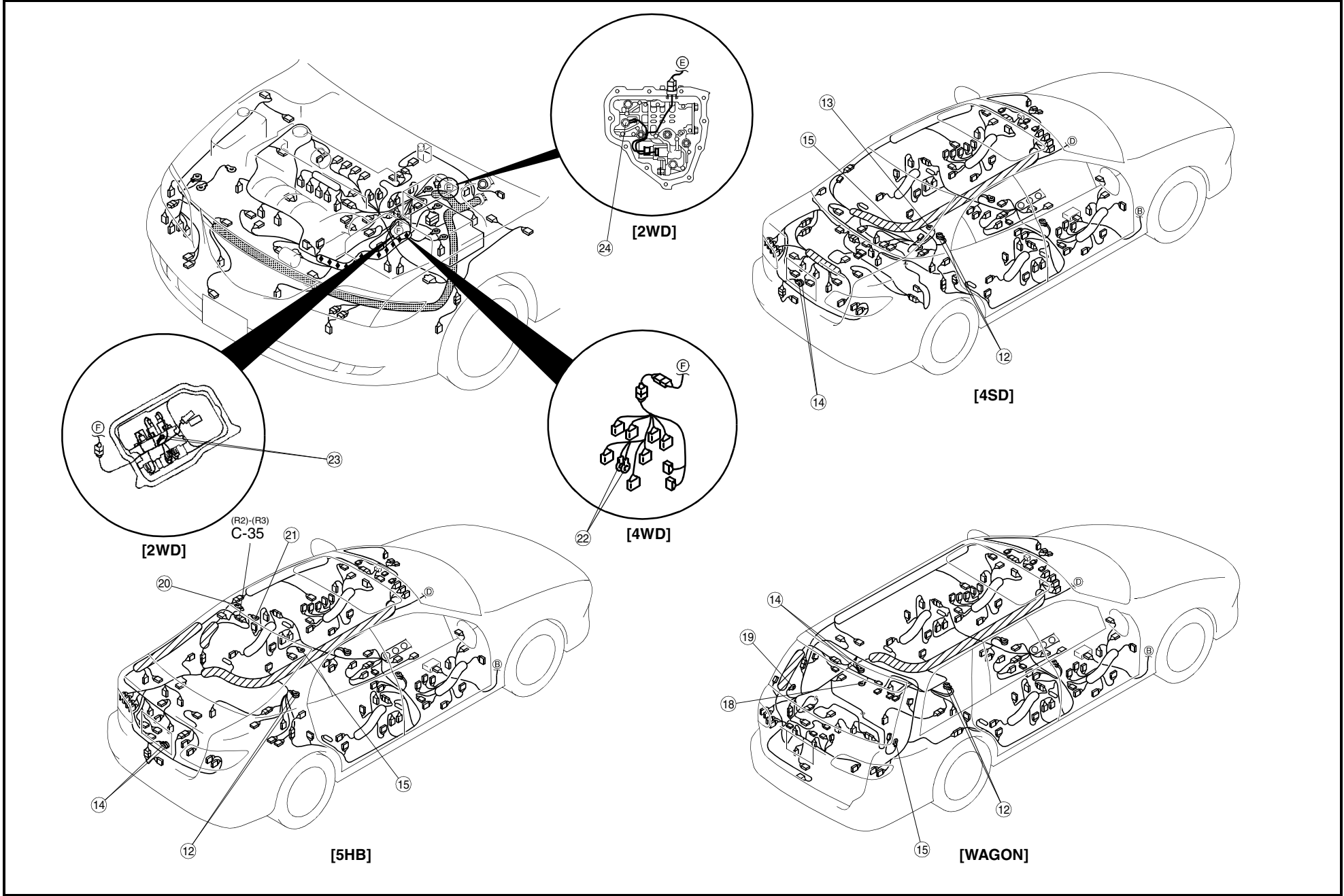


38



HARNES SYMBOL :  (F)  (E)  (D)  (R)

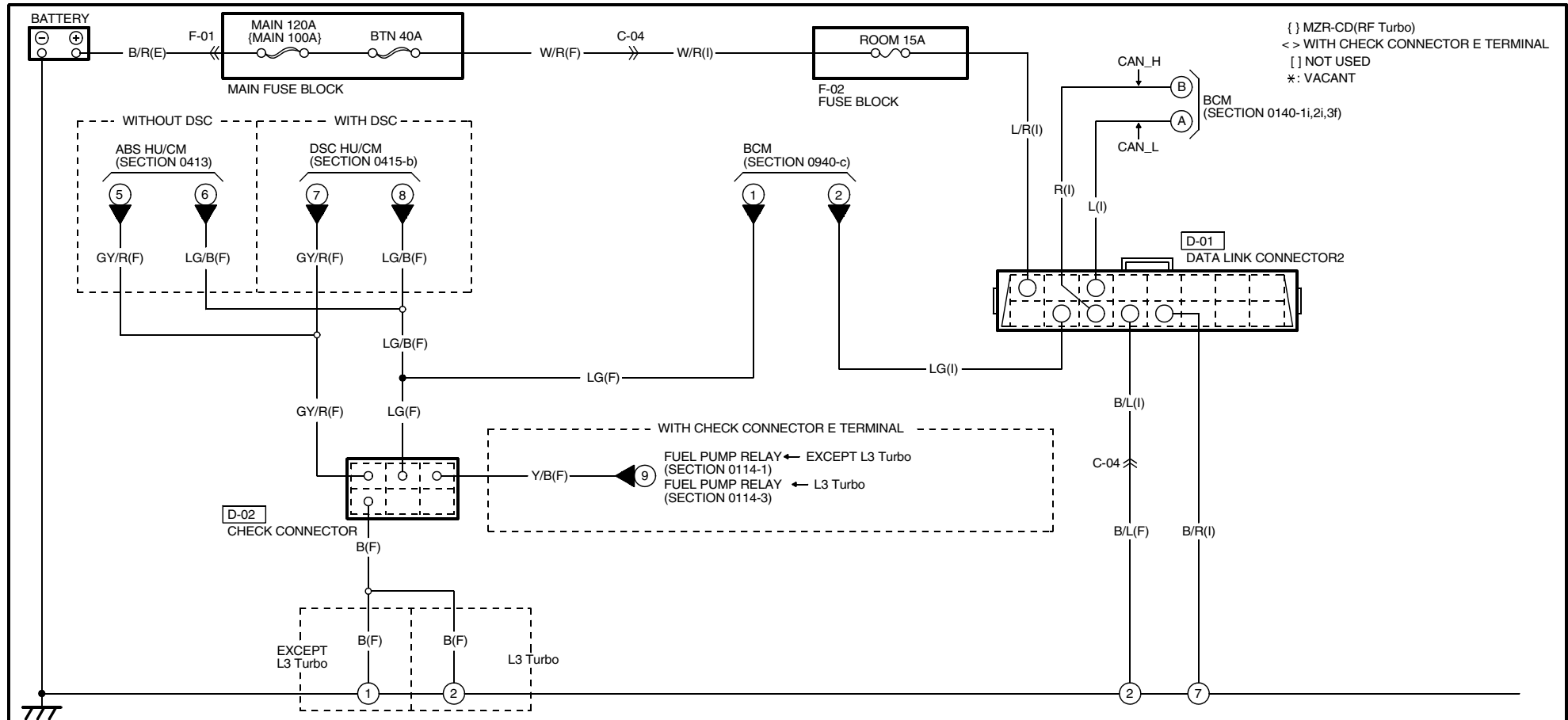
39



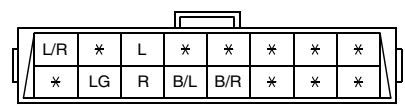
00G-c

DATA LINK CONNECTOR

00D

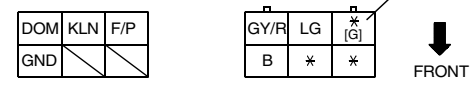


D-01 DATA LINK CONNECTOR2(I)



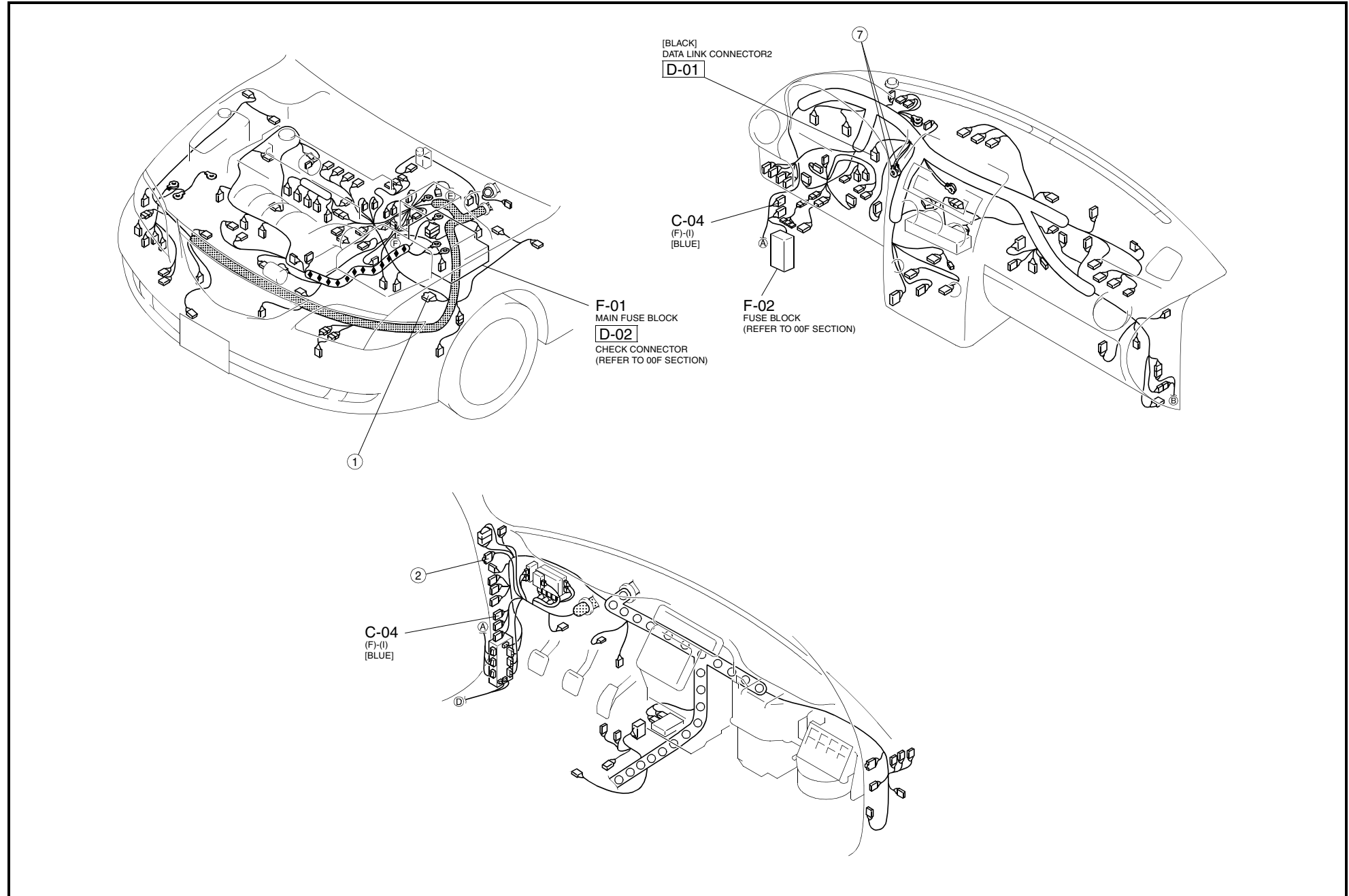
NOTE:SEEN FROM TERMINAL SIDE

D-02 CHECK CONNECTOR(F)



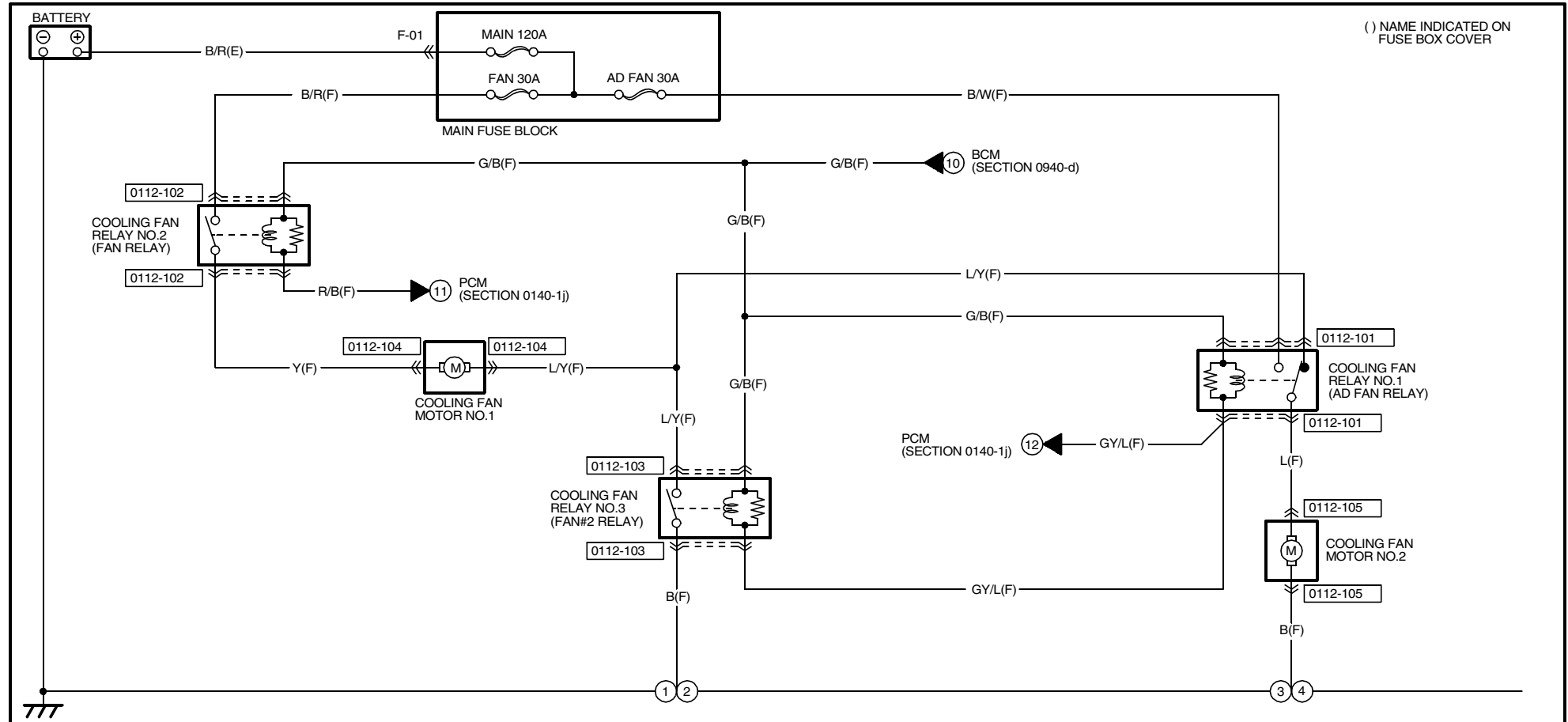
NOTE:SEEN FROM TERMINAL SIDE

HARNES SYMBOL :  (F)  (E)  (D)  (R)



COOLING SYSTEM (L3)

0112-1

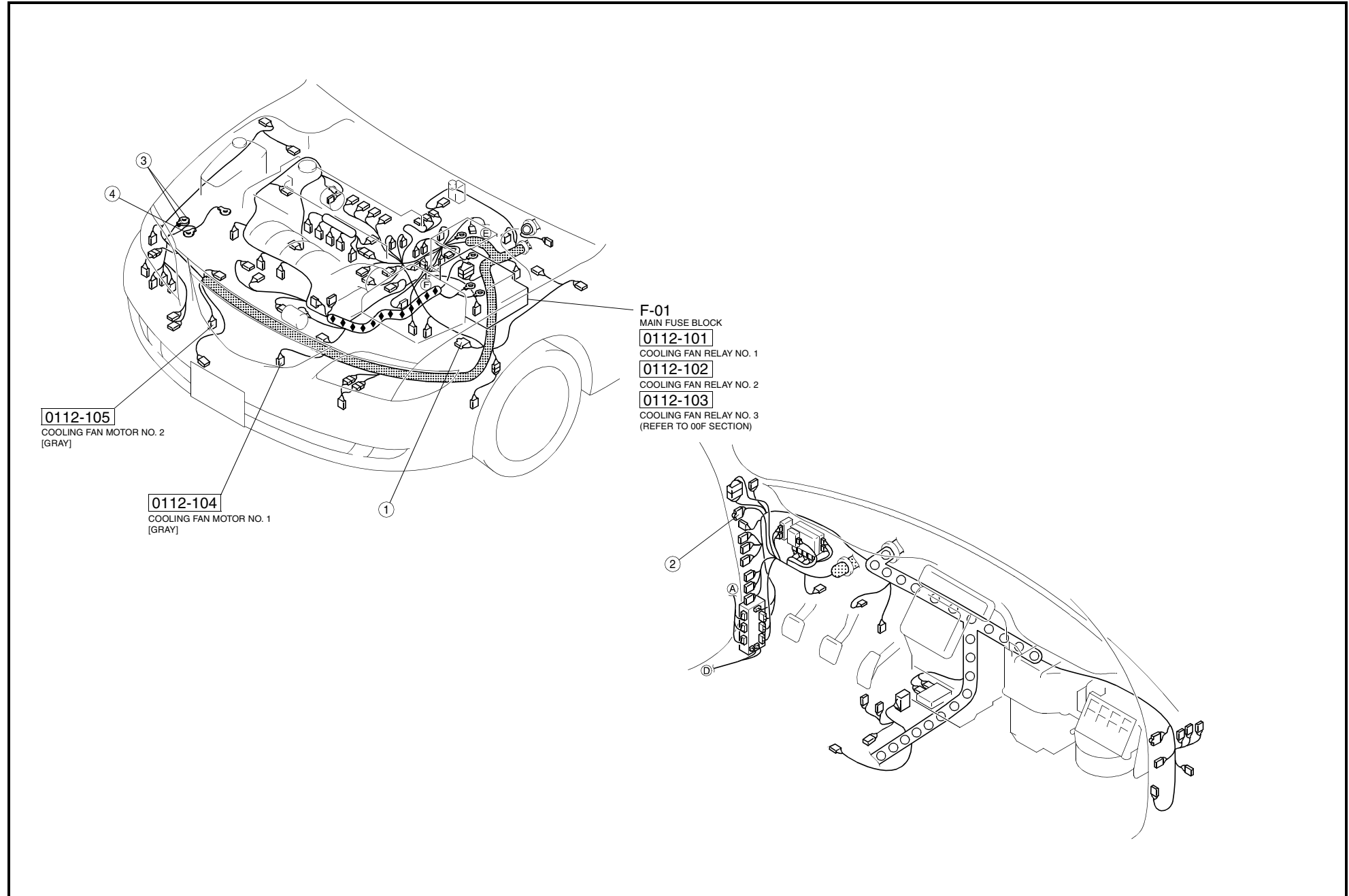


42

<p>0112-101 COOLING FAN RELAY NO.1(F)</p> <p>FRONT</p> <p>NOTE:SEEN FROM TERMINAL SIDE</p>	<p>0112-102 COOLING FAN RELAY NO.2(F)</p> <p>FRONT</p> <p>NOTE:SEEN FROM TERMINAL SIDE</p>	<p>0112-103 COOLING FAN RELAY NO.3(F)</p> <p>FRONT</p> <p>NOTE:SEEN FROM TERMINAL SIDE</p>	<p>0112-104 COOLING FAN MOTOR NO.1(F)</p>
<p>0112-105 COOLING FAN MOTOR NO.2(F)</p>			

HARNESS SYMBOL :  (F)  (E)  (D)  (R)

43



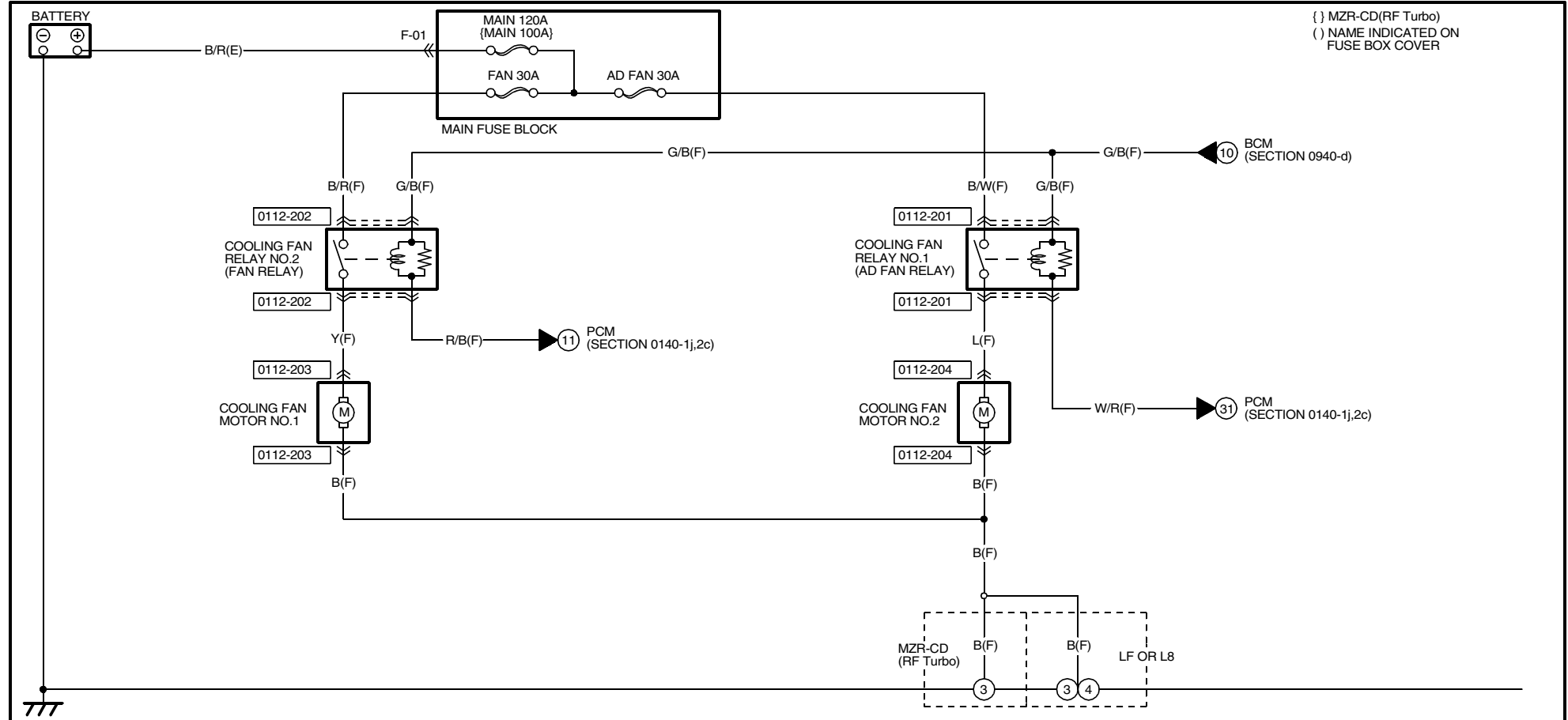
01 ENGINE
12 COOLING SYSTEM

0112-1

COOLING SYSTEM (EXCEPT FOR INTENSELY HOT AREA OR L8 OR MZR-CD (RF Turbo))

0112-2

{ } MZR-CD(RF Turbo)
() NAME INDICATED ON FUSE BOX COVER



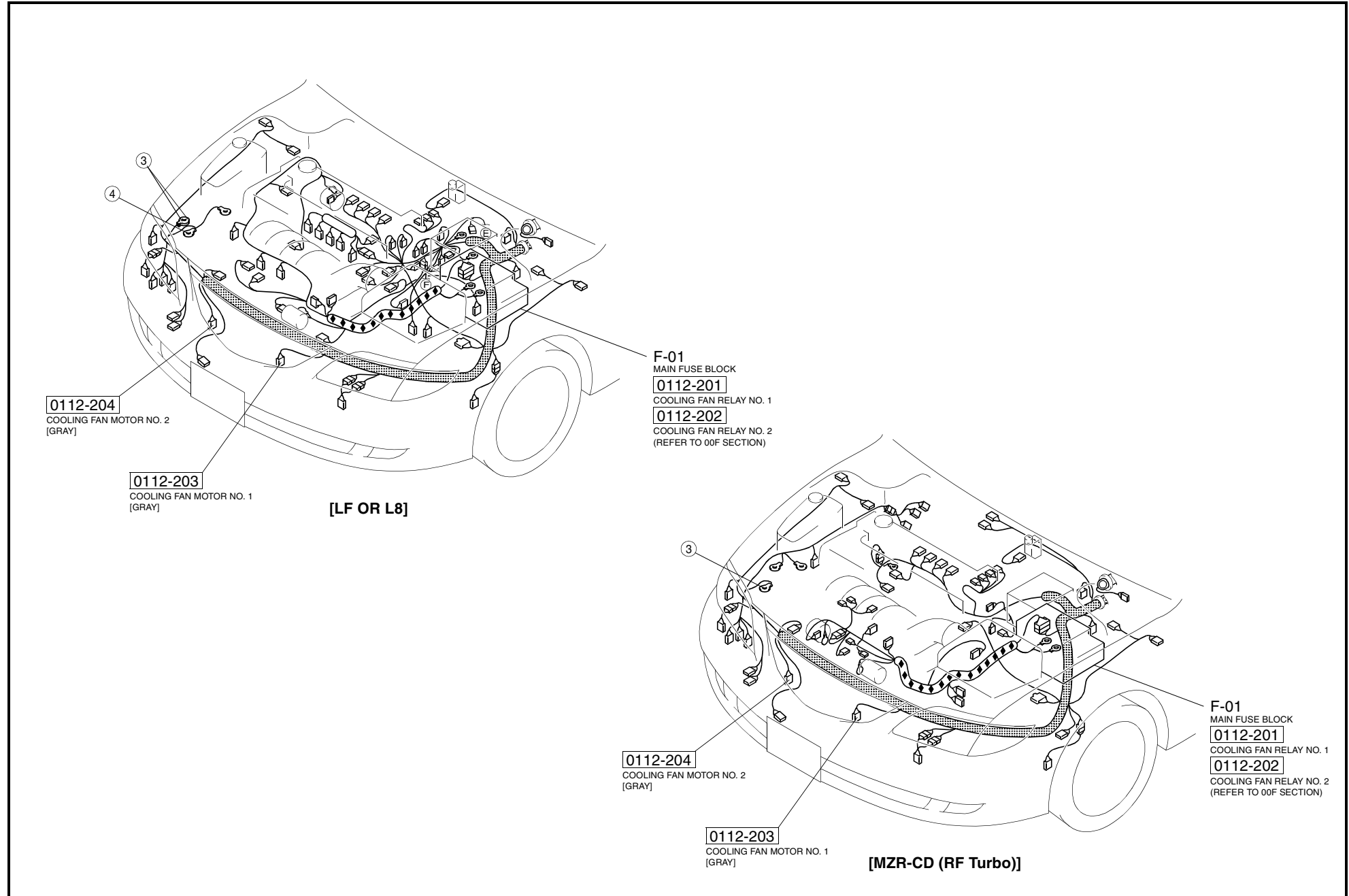
44

TTT

<p>0112-201 COOLING FAN RELAY NO.1(F)</p> <p>FRONT</p> <p>NOTE:SEEN FROM TERMINAL SIDE</p>	<p>0112-202 COOLING FAN RELAY NO.2(F)</p> <p>FRONT</p> <p>NOTE:SEEN FROM TERMINAL SIDE</p>	<p>0112-203 COOLING FAN MOTOR NO.1(F)</p> <p>(LF OR L8) (MZR-CD(RF Turbo))</p>	<p>0112-204 COOLING FAN MOTOR NO.2(F)</p> <p>(LF OR L8) (MZR-CD(RF Turbo))</p>

HARNESS SYMBOL :  (F)  (E)  (D)  (R)

45



01 ENGINE
12 COOLING SYSTEM

0112-2