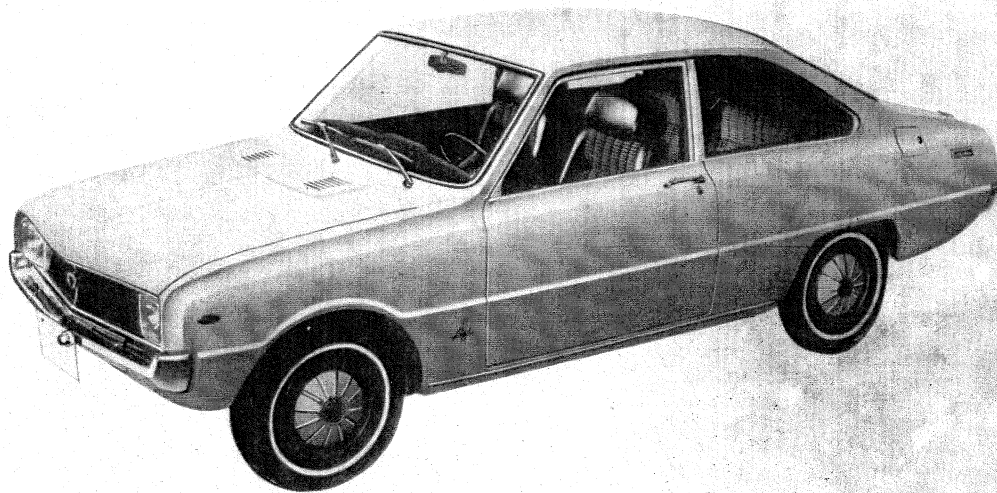


MAZDA 1200 COUPÉ SL PARTS CATALOG



TOYO KOGYO CO., LTD.

HOW TO USE THIS PARTS CATALOG

This parts catalog is compiled for the following models.

Model No.	Model/Type	Description
2 3 2 5	S T A — (S L)	MAZDA 1200 Coupe SL Belgium Spec. Model (L. H. D.)
2 3 2 6	S T A — (S L)	MAZDA 1200 Coupe SL General Spec. Model (L. H. D.)

INSTRUCTIONS FOR USE OF THIS PARTS CATALOG



(I) Layout

This parts catalog consists of index of groups, illustrations of parts, parts composition lists and index of part numbers.

(II) How to locate parts

- 1) When part number is not known.
 - A. Refer to index of groups and locate the group to which the part belongs.
↓
 - B. Open to group illustration page and locate part wanted.
↓
 - C. See the number given for the part in the illustration and find corresponding number in the parts composition lists.
↓
 - D. Then, you will find the name and the part number of the part on the right side of this number.
- 2) When part number is known but shape and name of part is unknown.
 - A. See index given at back of the parts catalog and find pages where illustration, part number and figure number is listed
↓
 - B. Open to page indicated and locate the part number in the part composition list, and after this locate the part in the illustration by referring to figure number given at front of the part number.
↓
 - C. The corresponding figure number in the illustration is for the part required.

(III) On Groups

- 1) The figure enclosed by a triangle at the top of each page (Example ) indicates group number.
- 2) Group numbers are determined according to structure and function of parts.
- 3) The group number given in the index of groups coincide with the numerals (Example ) of the illustration and parts composition pages.

(IV) Explanation on Parts Composition Lists

- 1) Indication of composition of assembly.
 - A. The largeness of the letters used for part names are given in three sizes.
 - (a) The largest letters show the largest composition of parts. Therefore, the parts printed in the largest letters always include parts printed offset to the right, and also printed in medium-sized letters.

- (b) The parts printed in medium-sized letters always include parts printed in the smallest letters and offset to the right.
- (c) The parts printed in smallest letters and offset to the right are always included in the parts printed in medium-sized letters or largest size letters that are located above.
- (d) The parts printed in smallest letters and not offset to the right signify that these parts do not form any part of any assembly or sub assembly.

B. Indication of parts composition by spacing out between lines. In the case of an assembly or sub assembly consisting of more than 2 parts, the space between the parts forming the assembly or sub assembly and the other parts is widened, to clearly indicate the parts forming the assembly or sub assembly.

Example:

No.	Part Number	Description	Q'ty
(a)	0249 14 100	OIL PUMP Cpt.	1
(b)	1 0249 14 111	Body	1
(c)	0249 14 120	OIL PUMP COVER Ass'y	1
(d)	2 0249 14 121	Cover	1
	3 99851 0614	Stud	2
(e)	4 99906 0600	Nut, Oil Pump Cover fix.	4
(f)	5 0259 14 300	Oil Filter	1

(a).....Includes (b) to (e)

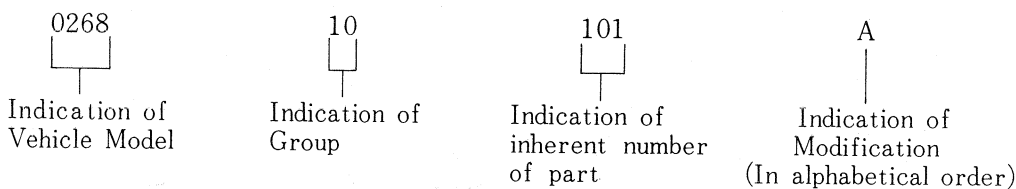
(c).....Includes (d)

(f).....Is not included in any ass'y nor sub ass'y

2) On Part Number

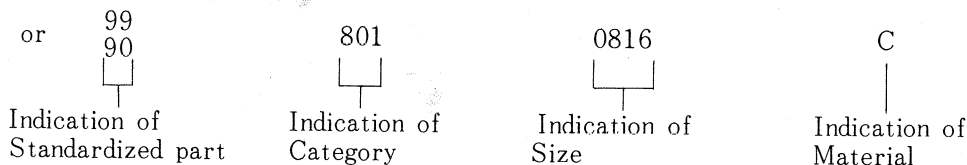
A. Exclusive parts

Example:



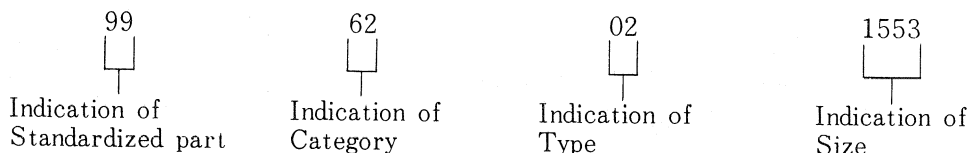
B. Standardized parts (General parts)

Example:



C. Standardized parts (Tires, Tubes, Disc Wheels, etc.)

Example:




3) On Quantity

The quantity given in the parts composition list shows number of parts used per vehicle and does not indicate selling unit.

4) Other Precautions

☆ Mark——Parts marked thus are not available as replacement parts, therefore, when these parts are required, order in the form of assemblies (or sets) including these parts or in the form of parts interchangeable with these parts.

5) Abbreviations

(R)	Right	Std.	Standard
(L)	Left	O. S.	Over Size
(C)	Center	U. S.	Under Size
(Frt.).....	Front	EX.	Exhaust
(Rr.)	Rear	IN.	Inlet
Cpt.	Complete	T/Mission	Transmission
Ass'y	Assembly		Indication of Group

(V) Precautions to be taken when placing orders for parts

- 1) Always specify part numbers, names of parts and quantity required.
- 2) Be sure to list the parts in order of part number, when filling in order sheet.
- 3) As processing of orders received by us is done by electronic computers, importance is attached to the part number. Therefore, in case the part number and name of the part do not coincide with each other, the part will be sent to you in accordance with the part number.

Group No.	Description	Fig. Page	Part No.
ENGINE PARTS			
10	Cylinder Head	1	2~3
10	Cylinder Block	4~5	6~8
10	Oil Pan, Chain Cover	9	10
11 . 23	Crankshaft	11	12~13
11 . 23	Piston	14	15
12	Valve System	16	17~18
12	Camshaft	19	20
13	IN. Manifold	21	22~23
13	Air Intake System	24	25
23	Air Cleaner	26	26
23	Carburettor	27~28	29~33
14	Oil Pump	34	35~36
15	Cooling System	37	38
15	Water Pump	39	40~41
16	Clutch Control System	42	43
41	Clutch Release Cylinder	44	45
17	T/Mission (Case)	46	47~48
17	T/Mission (Gear)	49	50~52
17	T/Mission (Shift Fork)	53	54
17	T/Mission (Gear Control)	55	56~57
18	Electric Equipment (Engine)	58	59~61
24	Distributor	62	63~64
24	Alternator	65	66~67
24	Starter	68	69~70

CHASSIS PARTS

25	Propeller Shaft	71	72
26	Rear Axle	73	74~75
26	Rear Brake	76	77~78
27	Driving	79	80~82
28	Rear Suspension	83	84~85
32	Steering System (Wheel)	86	87

INDEX.

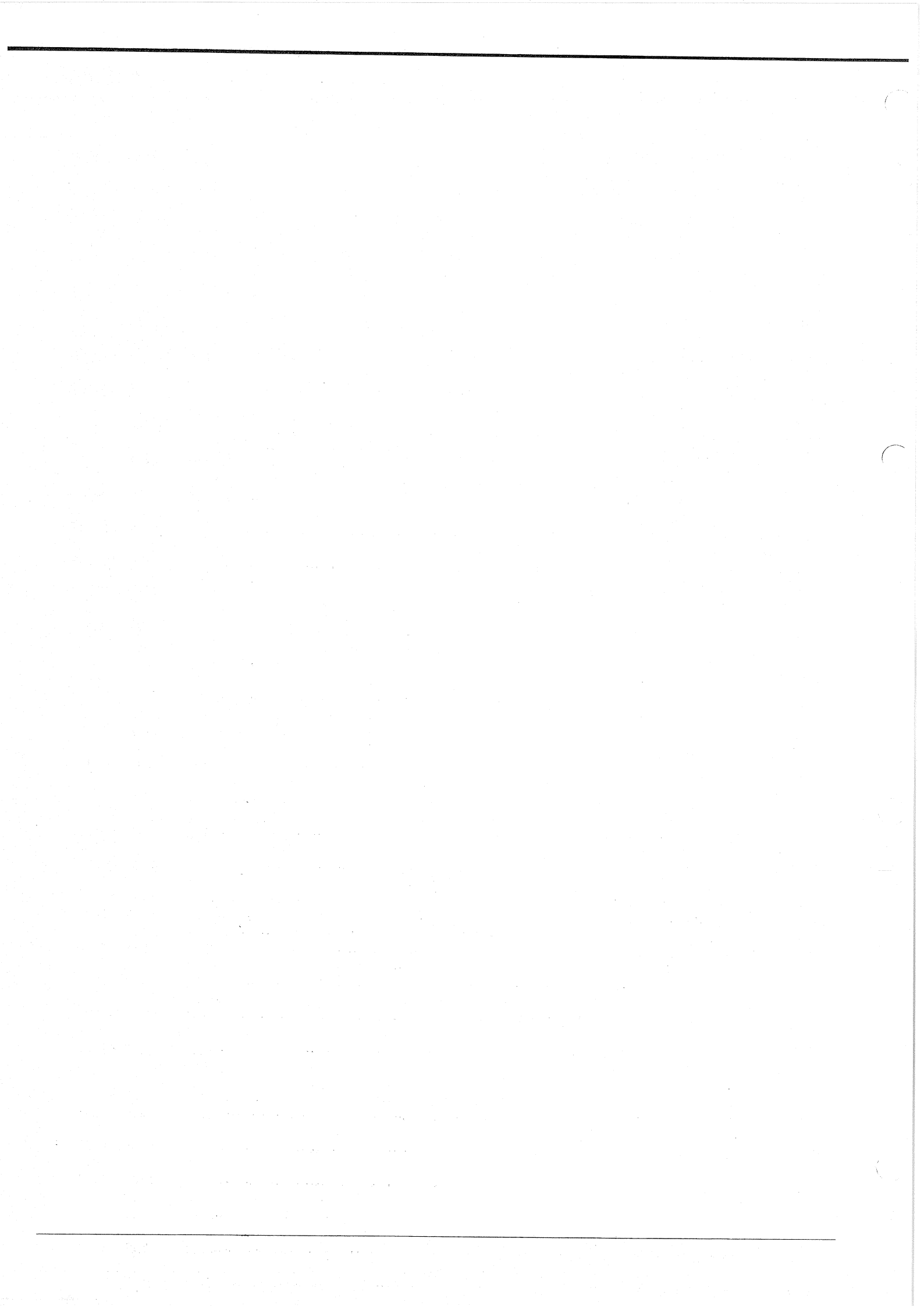
Group No.	Description	Fig. Page	Part No.
32	Steering System (Wheel, With Steering Lock)	88	89
32	Steering System (Gear)	90	91~92
32	Steering System (Rod)	93	94~95
33	Front Axle	96	97~98
33	Caliper	99	100~101
34	Front Suspension (Spring)	102	103~104
34	Front Suspension (Damper)	105	106~107
34	Front Suspension (Cross Member)	108	109~110
39	Engine & T/Mission Support	111	112
13.40	Exhaust System	113	114~115
41	Accelerator Control System	116	117
42.45	Fuel Tank & Piping	118	119~121
23	Fuel Pump	122	123
41.43	Clutch & Brake System	124	125~126
41	Clutch Master Cylinder	127	128
49	$\frac{11}{16}$ Tandem Master Cylinder	129	130~132
43.45	Clutch & Brake Piping	133	134
44	Hand Brake System	135	136~137

BODY PARTS

50	Bumper	138	139~140
52	Bonnet Lock	141	142~143
52	Trunk Lid	144	145
51~70	Body Panels (Front)	146	147~148
53.54	Body Panels (Side)	149	150~151
52~56	Body Panels (Floor & Roof)	152	153~154
56	Frame	155	156~157
55	Dashboard (Switch)	158	159~161
55	Meter	162	163
57	Seat	164	165~168
58.59	Front Side Door	169	170~172
58.59	Front Side Door (Lock)	173	174~177
61	Car Heater	178	179
66	Lamps (Front Side)	180	181~183

INDEX.

Group No.	Description	Fig. Page	Part No.
66	Lamps (Rear Side)	184	185~187
66	Electric Equipment (Body)	188	189~190
66	Windshield Wiper	191	192
87	Wiper Motor	193	194
66	Screen Washer	195	196
66	Auto Radio	197	198
55.68	Crush Pad & Trim	199	200~202
55.68	Glove Pocket	203	204~205
68	Service Tools	206	207
69	Attachment	208	209
69	Top Ceiling & Trim	210	211~212
69	Floor Mat & Pad	213	214~215
70.71	Ventilator	216	217~218
70.71	Window & Moulding	219	220~222
	Index.		223~240





CYLINDER HEAD

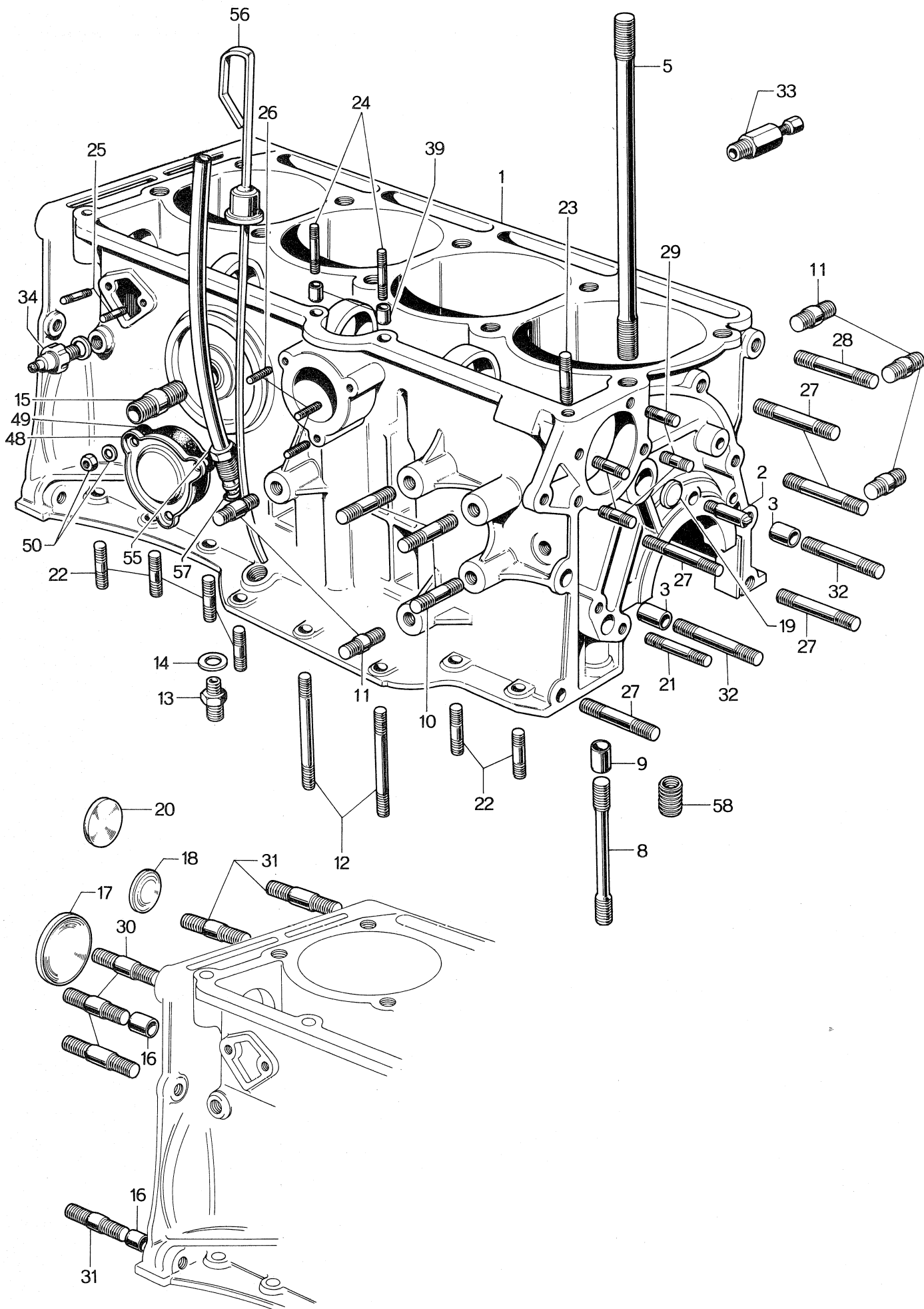
10

No.	Part Number	Description	Q'ty	Remarks
	<i>026810100A</i> 0268 10 100C	CYLINDER HEAD Ass'y	1	<i>NO. 105028-X 9/8</i>
1	<i>026810101</i> 0268 10 101A	Cylinder Head	1	<i>NO. 105028-X 9/8 ☆</i>
2	0118 10 112	Blind Plug	2	
3	99851 0822	Stud, EX. Manifold	8	
4	99851 0825	Stud, IN. Manifold	6	
5	99851 0622	Stud, Thermostat Casing	2	
6	99852 0610	Stud, Blind Cover	4	
7	99233 0616	Knock Pin, Rocker Arm Supportor	2	
	0249 10 130	VALVE GUIDE Ass'y (IN.)	4	
8	0249 10 104	Valve Guide (IN.)	4	☆
9	0249 10 106	Clip, Valve Guide	4	
	0249 10 140	VALVE GUIDE Ass'y (EX.)	4	
10	<i>025910140</i> 0259 10 105	Valve Guide (EX.)	4	<i>9/8 - 0</i> ☆
11	0249 10 106	Clip, Valve Guide	4	
12	0249 10 171	Blind Cover	1	
13	0249 10 181	Packing, Blind Cover	1	
14	99906 0600	Nut, Blind Cover fix.	4	
	99971 0600	Spring Washer	4	
15	<i>998710220A</i> 2158 10 220	Rocker Arm Cover Ass'y	1	<i>NO. 92280-X 9/8</i>
16	0222 10 227	High Tension Cord Protector	2	
17	0249 10 235	Rocker Cover Packing	1	

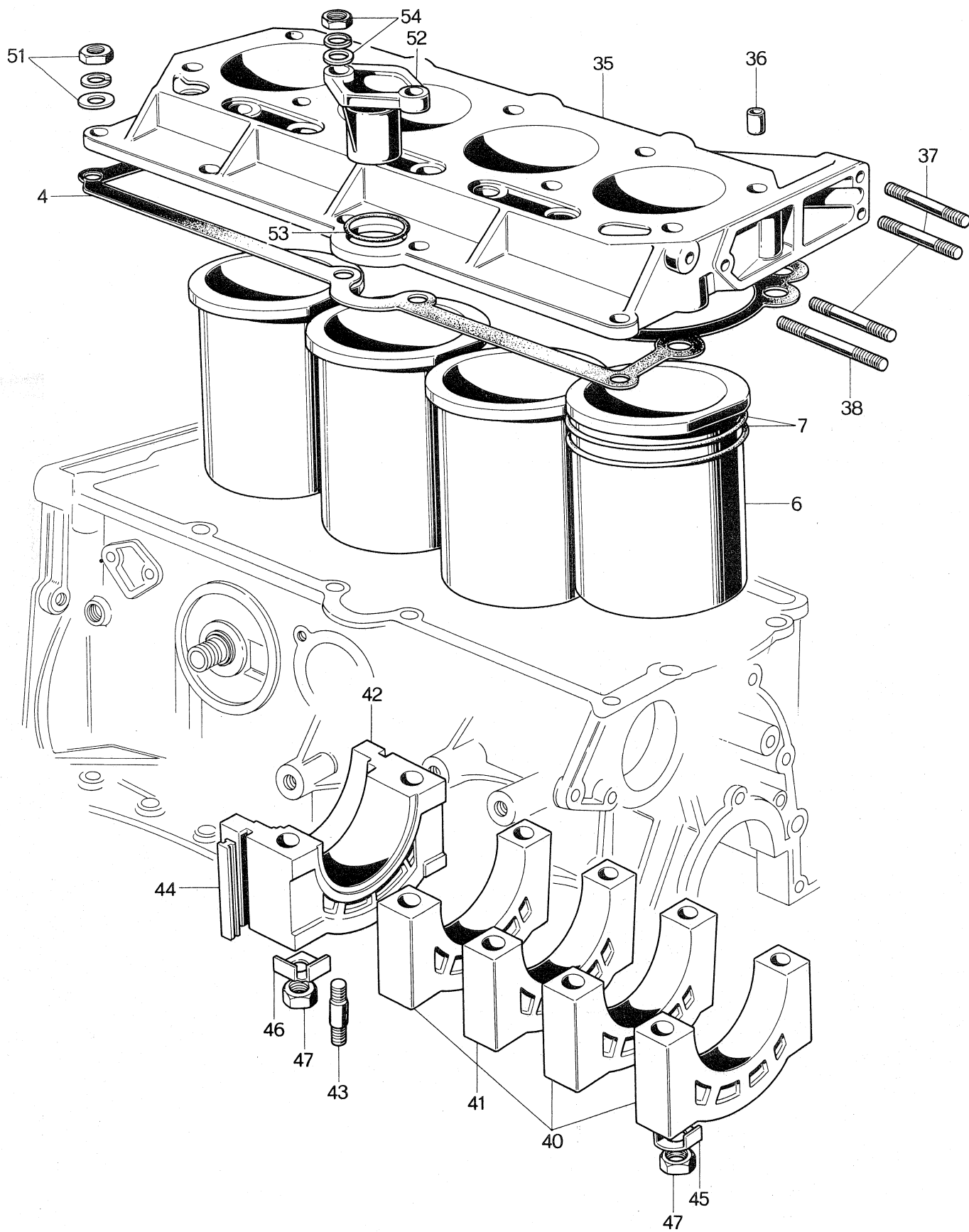
10 CYLINDER HEAD

No.	Part Number	Description	Q'ty	Remarks
18	99801 0838	Bolt, Rocker Arm Cover	2	
19	0107 10 231	Sealing Washer, Bolt	2	
20	0243 10 251A	Oil Filler Cap	1	
21	0268 10 271	Gasket, Cylinder Head → 4880-10-271	1	
22	0107 10 273	Spark Plug (NGK Make)	4	} Selective use
	0222 10 273-5	Spark Plug (Denso Make)	4	
23	0249 10 551	Engine Hanger (A)	1	
24	0249 10 561	Engine Hanger (B)	1	
25	0249 13 170B	Hose Connector, For Cars With Car Heater	1	
26	99511 1600	Hex-Head Plug, For Cars Without Car Heater	1	
27	99564 1600	Packing, Plug	1	
28	0268 13 335 <i>0268 13 335A</i>	Ventilator Hose, Air Cleaner ~ Rocker Cover	1	<i>no. 95280 ~ X 69/6</i>
29	0259 15 171 <i>0118 15 171A</i>	Thermostat	1	<i>no. 105022 ~ 0 69/6</i>
30	0249 15 172	Thermostat Casing Cover	1	
31	0118 15 173	Packing, Casing Cover	1	
32	99906 0600	Nut, Casing Cover	2	
	99953 0600	Plain Washer	2	
	99971 0600	Spring Washer	2	
33	0221 23 021	Helisert Insert, Spark Plug	—	
	<i>0259 23 021</i>	<i>valve guide</i>	4	<i>69/6 ~ added anew</i>

10 CYLINDER BLOCK



CYLINDER BLOCK



10 CYLINDER BLOCK

No.	Part Number	Description	Q'ty	Remarks
	0271 10 300H 0271 10 300H	CYLINDER BLOCK Ass'y	1	No. 92280 ~ X 69/6
1	0268 10 301C	Cylinder Block <i>{ 0271 10 300H } <i>{ 0271 10 300H } 0249 11 083 0249 11 084</i></i>	1	No. 92280 ~ X 69/6 ☆
2	0249 10 304	Oil Jet <i>interchangeable</i>	1	
3	99234 1216	Tubular Pin, Front Plate	2	
4	0249 10 307A	Packing, Top Deck	1	
5	0268 10 308	Stud, Cylinder Head	10	
6	0268 10 311	Cylinder Liner	4	
7	0249 10 312	"O" Ring, Cylinder Liner	8	
8	0249 10 313	Stud, Bearing Cap	10	
9	99234 1412	Tubular Pin, Main Bearing Cap	10	
10	99788 1028	Stud, Engine Mounting (R)	3	
11	99788 1018	Stud, Engine Mounting (R) (L)	5	
12	99851 0665	Stud, Oil Pump	2	
13	0249 10 318	Oil Pump Pipe Nipple	1	
14	99564 1800	Packing, Oil Pump Pipe Nipple	1	
15	0249 10 319	Oil Filter Center Pipe	1	
16	0221 10 309	Tubular Pin, Clutch Housing	2	
17	99305 4500	Countersunk Plug, Camshaft	1	
18	99307 1800	Blind Plug, Main Oil Gallery	2	
19	99307 0800	Blind Plug, Chain Adjuster Oilway	2	
20	99306 3000	Blind Plug, Water Gallery	1	
21	99851 0632	Stud, Chain Adjuster	2	
22	99851 0612	Stud, Oil Pan	17	
23	99851 0620	Stud, Cylinder Block Top Deck	3	
24	99851 0630	Stud, Top Deck & Oil Pump Gear Cover	2	
25	99851 0625	Stud, Fuel Pump	2	

CYLINDER BLOCK

10

No.	Part Number	Description	Q'ty	Remarks
26	99851 0612	Stud, Blind Cover	3	
27	99851 0840	Stud, Chain Cover	5	
28	99851 0835	Stud, Water Pump	1	
29	99851 0812	Stud, Camshaft Thrust Plate, Front Plate	4	
30	99788 1032	Stud, Clutch Housing	3	
31	99788 1042	Stud, Clutch Housing	3	
32	99851 0848	Stud, Chain Cover	2	
33	0118 10 320	Water Drain Cock Ass'y	1	
34	0222 18 501	Oil Pressure Switch	1	
	0223 18 501	Oil Pressure Switch		
		<i>(Johal Rika make)</i>		
		<i>Selective use</i>		
		<i>(Onishi Seiki make)</i>		
	0268 10 340A	TOP DECK Ass'y, CYLINDER BLOCK	1	☆
35	0268 10 341A	Top Deck	1	☆
36	99234 1463	Tubular Pin, Cylinder Head & Cylinder Block	2	
37	99851 0835	Stud, Water Pump	3	
38	99851 0865	Stud, Chain Cover	1	
39	99234 0910	Tubular Pin, Oil Pump	2	
40	<i>0268 10 351B</i> 0259 10 351B	Main Bearing Cap	<i>3</i> 3 No. 92280 ~ 0 5/6	☆
41	<i>0268 10 361B</i> 0259 10 361B	Main Bearing Cap (C)	<i>1</i> 1 No. 92281 ~ 0 5/6	☆
	<i>0268 10 370C</i> 0259 10 370C	MAIN BEARING CAP (Rr.)	<i>1</i> 1 No. 92280 ~ X 5/6	☆
42	<i>0268 10 371D</i> 0259 10 371D	Bearing Cap	<i>1</i> 1 No. 92280 ~ X 5/6	☆
43	99852 0612	Stud, <i>oil Pan</i>	2	
44	0249 10 385	Side Seal, Main Bearing Cap	2	

CYLINDER BLOCK

No.	Part Number	Description	Q'ty	Remarks
45	0249 10 353	Lock Washer, Main Bearing Cap	8	
46	0249 10 375	Lock Washer, Main Bearing Cap	2	
47	0249 10 352	Lock Nut, Main Bearing Cap	10	
48	0249 10 328	Blind Cover, Oil ^{Pump} Ring Driven Cover	1	
49	0249 10 329	Packing, Blind Cover	1	
50	99906 0600	Nut, Blind Cover fix.	3	
	99971 0600	Spring Washer	3	
51	99906 0600	Nut, Top Deck	2	
	99971 0600	Spring Washer	2	
	99953 0600	Plain Washer	2	
52	0249 10 391	Drive Gear Cover, Oil Pump	1	
53	0249 10 393	"O" Ring, Oil Pump Driven Gear Cover	1	
54	99906 0600	Nut, Drive Gear Cover	2	
	99971 0600	Spring Washer	2	
	99953 0600	Plain Washer	2	
55	0268 10 440	Guide Pipe Ass'y, Oil Level Gauge	1	
56	0249 10 450A	Oil Level Gauge	1	
57	0268 10 449	Guide Pipe Ring	1	
58	0249 23 022	Helisert Insert, Main Bearing Cap	—	