

MF2400

Operation and maintenance manual

Valid for the following tractor models:

For tractors with cab or with ROPS frame, model:

MF2430 STD-GE

MF2435 STD-GE

MF2440 STD-GE

CHAPTER

CONTENTS
TRACTOR IDENTIFICATION

1

INTRODUCTION, WARRANTY AND SAFETY
NOTES

2

INSTRUMENTS AND CONTROLS

3

OPERATION

4

ROUTINE MAINTENANCE

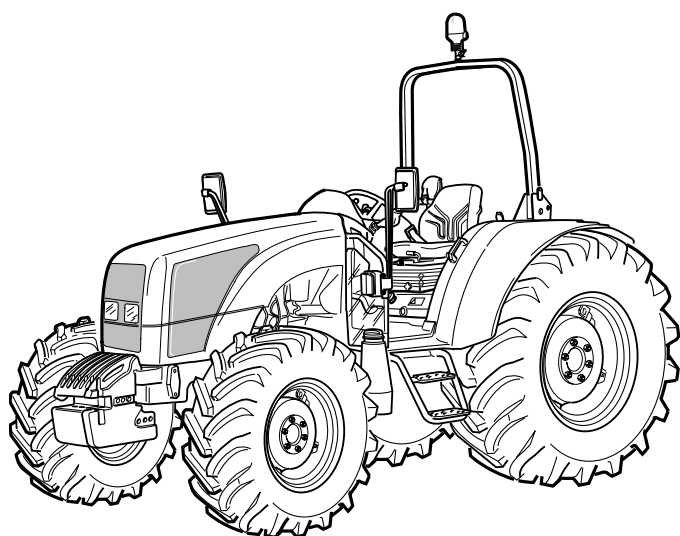
5

SPECIFICATIONS

6

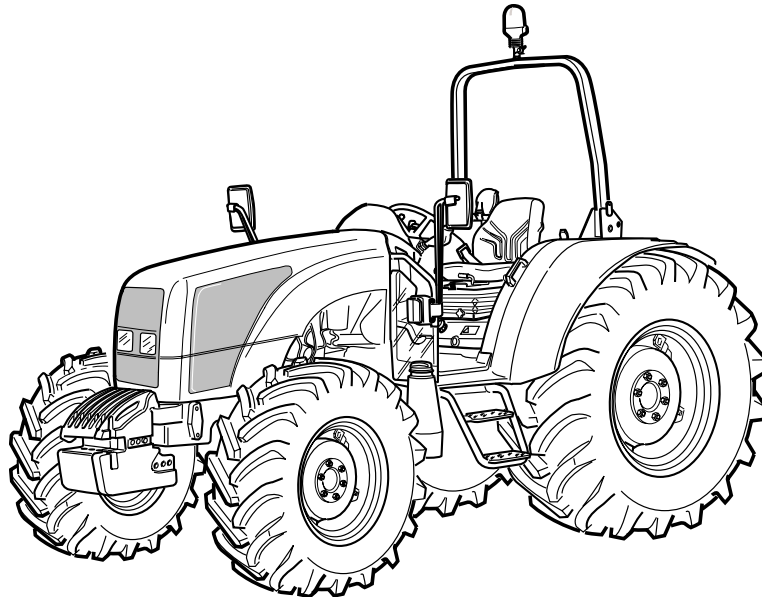
ALPHABETICAL INDEX

7



Publication N. 3676 146 M1
Printed 2004

MF2430 STD-GE
MF2435 STD-GE
MF2440 STD-GE



CALIFORNIA
Proposition 65 - Warning

Diesel engine exhaust and some of its constituents are known to the State of California to cause cancer, birth defects, and other reproductive harm.

Contents

Page n.

Chapter 1 Contents3

 Tractor identification6

Chapter 2 Introduction, warranty and safety notes7

 Introduction8

 Warranty, pre-delivery and installation8

 Warranty procedure8

 Parts warning9

 Of you move9

 Service after warranty9

 Safety9

 Safety alert symbols and terms10

 Safety - Tractor and implement10

 Safety - Introduction10

 Safety - A word to the operator10

 Safety - Danger, Warning and Caution11

 Safety - Decals11

 Safety - Follow a safety program11

 Safety frame12

 Cab safety12

 Precautions to operate safely13

 Check the equipment14

 Clean the tractor15

 Protect the environment16

 Safety - Tractor maintenance16

 Safety - Starting17

 Work safely19

 Make the right moves19

 Follow safe operating practices19

 Watch out for others20

 Ris of overturning21

 To avoid side overturns21

 To avoid nack overturns23

 General operation hazards25

 Implements and attachments26

 Road transport27

 Road regulations27

 Safety - After operation28

 Additional noted29

 Risks deriving from exposure to noise31

 Position of safety decals32

Chapter 3 Instruments and controls35

 Controls36

 Instrument panel38

 Control panel on dashboard44

 Steering wheel adjustment45

 Seat46

 Cab47

 Heating48

 Air conditioning49

 Miscellaneous50

Contents

Page n.

Chapter 4	Operation	51
	Starting and stopping the engine	52
	Starting the tractor	53
	Clutch	54
	Standard gearbox	54
	Speedfive	55
	Speedshift gearbox	57
	Speedfive - Speedshift: Ground speed tables	58
	Powershuttle gearbox	60
	Powershuttle: Ground speed tables	62
	Powershuttle: Operation	64
	Power take-off	71
	Brakes	74
	Differential lock	76
	Four-wheel drive	76
	Four-wheel drive front axle - Adjustment of the steering angle	77
	Track adjustment	78
	Wheels and tyres	80
	Ballast	81
	Auxiliary control valves	84
	Three-point linkage	85
	Mechanically controlled power lift	87
	Electronically controlled power lift	89
	Towing attachments	95
	ROPS frame	97
	Tractor transport	98
Chapter 5	Routine maintenance	99
	Routine maintenance table	100
	Lubrication and maintenance	102
	Running in	102
	Oil and fuel fill in	104
	Access for inspection and maintenance	105
	Maintenance at request	106
	Routine maintenance, 100 hours	120
	Routine maintenance, 250 hours	122
	Routine maintenance, 500 hours	124
	Routine maintenance, 1000 hours	127
	General maintenance	133
	Bleeding air from the fuel system	133
	Bleeding air from the brake system	134
	Air conditioning system	136
	Cab air filter	138
	Cab - Maintenance	139
	Electrical system - Battery	141
	Headlights	143
	Changing lamps	143
	Fuses	146
	Trailer power socket	148
	Preparing for long idle periods	149

Contents

Page n.

Chapter 6	Tractor specifications	151
	Weights and dimensions	152
	Engine	154
	Transmission	155
	Power take-off	156
	Brakes	156
	Track adjustment	156
	Steering components	156
	4WD front axle	157
	Hydraulic system	157
	Electronic power lift	157
	Mechanical power lift	157
	Three-point linkage	158
	Auxiliary control valves	158
	Towing attachments	158
	Cab	158
	Seat	159
	Bonnet	159
	Electrical system	159
	Optional extras	159
	Tyres	160
	Noise level	161
	GE tractor	162
	Track adjustment - GE tractor	163
	EC Declaration of Conformity	164
	Installation of implements	167
	Hitching points for implements	168
	Lubricant and fuel chart	169
Chapter 7	Alphabetical index	170

Tractor identification

Tractor identification

The tractor is identified by a serial number stamped on the rear part of the transmission housing and on the bonnet. Each engine has a serial number of its own, stamped on the engine block.

Always state the chassis and engine serial numbers to ensure prompt and efficient service when ordering spare parts or when asking for technical explanations or other information.

Chassis serial number, Fig.1-2 and Fig.1-3

Engine serial number, Fig.1-1

Cab serial number, Fig.1-4

Type of tractor

Owner / Operator

Address of Dealer

.....

Delivery date

Warranty expiry date

NOTE: Look after this Operation and Maintenance Manual carefully and consult it whenever in doubt.

This publication has been written in compliance with International Standard ISO 3600 'Guide for: information, contents and presentation of operation and maintenance manuals supplied with tractors and machinery for agricultural and forestal use'.

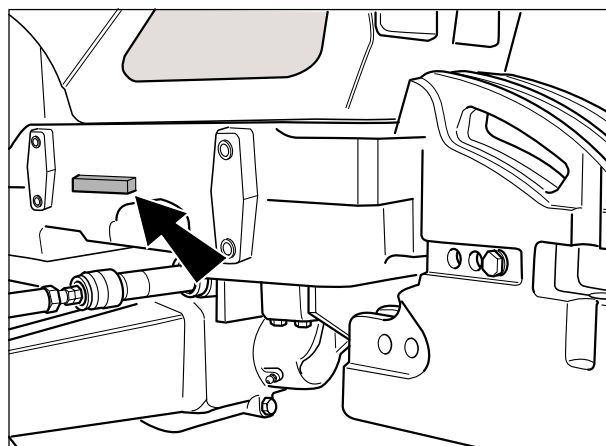


Fig.1-3 -Front axle type and serial number (on axle housing).

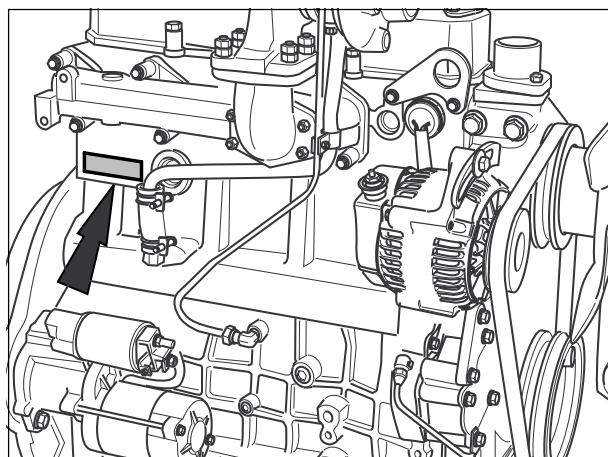


Fig.1-1 - Engine serial number.

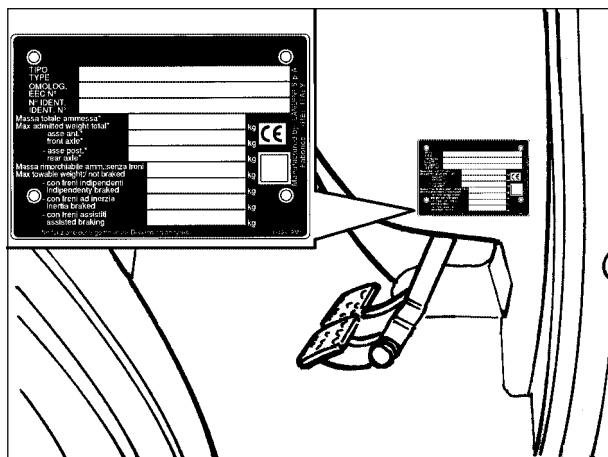


Fig.1-2 -Type of tractor and chassis serial number (on lower dashboard panel).

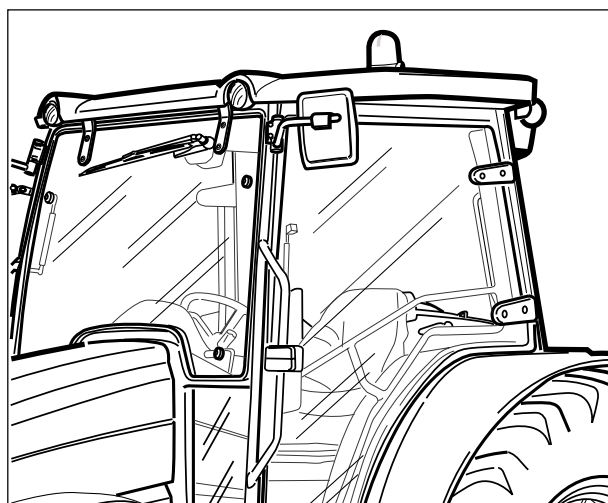


Fig.1-4 - Cab type and serial number (on rear cab pillar).

Chapter 2

Introduction, warranty and safety notes

2

Introduction and warranty

INTRODUCTION

NOTE: *This book is published for worldwide distribution, and the availability of equipment shown either as basic or accessory may vary according to the territory in which the tractor is to be operated. Full details of equipment available in your area can be obtained from your Dealer.*

The purpose of this book is to enable the owner and driver to operate the tractor in a safe manner. Providing that the instructions are followed carefully, the tractor will give years of service in our tradition.

The installation of the product by the Dealer gives the opportunity to ensure that these operating and maintenance instructions are understood. Always consult your Dealer if you do not understand any part of this book. It is important that these instructions are understood and observed. Daily maintenance should become a routine, and a record of hours in service should be kept.

When new parts are required it is important that only genuine service parts are used. Our authorized Dealers supply genuine parts and can give advice regarding their fitment and use. Extensive damage may occur as a result of the fitment of parts of inferior quality. Customers are advised to buy their service parts only from an authorized Dealer.

Owing to wide variations in operating conditions, it is impossible for the Company to make comprehensive or definitive statements in its publications regarding performance or methods of use of its machines, or to accept liability for any loss or damage which may result from these statements, or from any errors or omissions. If the tractor is to be used for abnormal conditions which may be detrimental (e.g. deep water or paddy fields) consult your Dealer for special instructions, or the warranty may be invalidated.

These tractors are designed solely for use in customary agricultural operations (intended use).

Use in any other way is considered as contrary to the intended use. The tractor manufacturer accepts no liability for any damage or injury resulting from misuse and these risks must be borne solely by the user.

Compliance with, and strict adherence to, the conditions of operation, service and repair as specified by the manufacturer also constitute essential elements for the intended use.

These tractors should be operated, serviced and repaired only by persons familiar with all their particular characteristics and who are acquainted with the relevant safety rules (accident prevention).

Customers are strongly advised to use an official authorized Dealer in connection with any service problems and adjustments that may occur.

WARRANTY, PRE-DELIVERY and INSTALLATION

The Company, when selling new goods to their Dealers, gives a warranty which, subject to certain conditions, guarantees that the goods are free from defects in material and workmanship. Since this book is published for worldwide circulation, it is impossible to detail the exact terms and conditions of warranty that apply to a retail customer in any particular country. Purchasers of new equipment should request full details from their supplying Dealer.

In accordance with the Company policy of continuous improvement to its machines, alterations in the specifications of machines may be made at any time without notice. The Company accepts no responsibility for discrepancies which may occur between the specifications of its machines and the descriptions thereof contained in its publications.

A Dealer is required to carry out certain activities when supplying a new tractor. These consist of a full pre-delivery inspection to ensure that the tractor supplied is ready for immediate use, and full instruction in the basic principles of operation and maintenance of the tractor. These instructions will cover instruments and controls, routine maintenance and safety precautions. All persons who will be concerned with the operation and maintenance of the machine should be present for these instructions.

NOTE: *The tractor manufacturer will not accept responsibility for any claim resulting from the fitment of non-approved parts or attachments, or unauthorized modification or alteration.*

WARRANTY PROCEDURE

Correct installation, coupled with regular maintenance, will do much to prevent breakdowns. If, however, operating trouble is experienced during the warranty period, the following procedure must be adopted:-

Immediately notify the Dealer from whom you purchased the tractor, quoting the Model and Serial Number. It is most important that there should be no delay, and you should realise that, even where the original failure is covered by warranty, if the failure is not repaired immediately, warranty cover may not apply.

Provide your Dealer with as much background information as you can. It will help him to know how many hours service has been achieved, the type of work on which you are engaged and the symptoms of the trouble.

It should be noted that normal maintenance services such as tuning, brake/clutch adjustments, and the supply of materials used to service the tractor (oil, filters, fuel and antifreeze) are not covered by terms of the warranty.

PARTS WARNING

The fitment of non genuine parts may result in a part of substandard quality being used. The tractor manufacturer will not take the responsibility for any loss, damage or liability resulting from the fitment of such parts, and, if fitted during the normal warranty period the manufacturer's guarantee may be invalidated.

IF YOU MOVE

Only the official Dealer from whom you purchased the tractor is responsible for the protection afforded by your warranty and, where possible, you should always take the tractor to him for repair. If, however, you move to another area or if your tractor should be working temporarily at some distance from the Dealer from whom it was purchased, you are recommended to obtain from the original Dealer the name and address of the Dealer nearest to your new location and to ask for arrangements to be made for outstanding service warranty commitments to be transferred to the latter. If you have left the area in which the original Dealer operates and have not made arrangements with your new Dealer, the latter will readily provide assistance in an emergency but you will be charged at normal rates for any work undertaken unless:

- a. You make it clear that the warranty has not expired, and
- b. You give the repairing Dealer the opportunity to make suitable arrangements with the retailing Dealer.

SERVICE AFTER WARRANTY

During the warranty period, you should have all your repairs and maintenance performed by your Dealer. This ensures that a detailed check is kept on the progress and performance of your new tractor.

In order to obtain the best results from your tractor, it is important that regular maintenance and service checks continue after the warranty period has expired. Make use of your local Dealer for all major tractor services; a trained engineer will spot any problems between one service and the next.

The mechanics are regularly trained and updated on the product, servicing techniques and the use of modern service tools and diagnostic equipment. They receive regular Service Bulletins, have all Workshop Manuals and other such technical information to ensure that the repair or service is to the standard required.

SAFETY

The safety of the operator is one of the main concerns in designing and developing a new tractor. Designers build in as many safety features as possible. However, every year many accidents occur which could have been avoided by a few seconds thought and a more careful approach to handling farm machinery and implements.

Read and implement the safety instructions detailed in the next section of this book.



WARNING: *In some of the illustrations used in this Operator Instruction Book, panels or guards may have been removed for clarity. Never operate the tractor without these components in position. If the removal of panels or guards is necessary to make a repair, they MUST be replaced before operation.*

Safety notes

SAFETY ALERT SYMBOLS AND TERMS

This safety alert symbol means ATTENTION! BECOME ALERT! YOUR SAFETY IS INVOLVED!



The safety alert symbol identifies important safety messages on machines, safety signs, in manuals or elsewhere. When you see this symbol, be alert to the possibility of personal injury or death. Follow the instructions in the safety message.

Why is SAFETY important to you?

★ ACCIDENTS DISABLE and KILL ★

★ ACCIDENTS are COSTLY ★

★ ACCIDENTS can be AVOIDED ★

SAFETY - TRACTOR and IMPLEMENT

- The tractor is a source of power - Mechanical and hydraulic.
- On its own, the tractor is of little practical value. Only when used in conjunction with an implement or other attachment does it become a working unit.
- This instruction book is compiled to cover those safe working practices that are associated with the base tractor operation.
- It does not cover all operation and safety instructions relevant to all known implements and attachments that may be fitted at the time of tractor delivery or at some future date.
- It is essential that operators use and understand the relevant instruction manual of such implements and attachments.

SAFETY - INTRODUCTION

This safety section of your Operator Instruction Book is intended to point out some of the basic safety situations which may be encountered during the normal operation and maintenance of your PLATFORM or CAB tractor, and to suggest possible ways of dealing with these situations. This section is **NOT** a replacement for other safety practices featured in other sections of this book.

Additional precautions may be necessary depending on attachments used and conditions at the work site or in the service area. The tractor manufacturer has no direct control over tractor application, operation, inspection, lubrication or maintenance. Therefore it is YOUR responsibility to use good safety practices in these areas.

SAFETY - A WORD TO THE OPERATOR

It is **YOUR** responsibility to read and understand the safety section in this manual before operating your tractor. You must follow these safety instructions that take you step by step through your working day.

In reading this section, you will note that illustrations have been used to highlight certain situations. Each illustration is numbered and the same number appears in the text in parenthesis. This number is placed at the end of the written text that refers to the illustration and is made up of two digits, separated by a hyphen: the first digit designates the chapter, the second one the figure number in that chapter (e.g.: Fig. 2-34 = Figure 34 of chapter 2).

Remember that **YOU** are the key to safety. Good safety practices not only protect you, but also the people around you. Study the features in this manual and make them a working part of your safety program.