



XPRT MLT 625 Training



Denomination



•MLT 625 75 H

MLT = Manitou Loader Telescopic

6 = Max height: 6 meters

25 = Max load capacity: 2.5 tons




75 = Engine 75 HP

S1 = Series 1

E3 = Euro 3

New Agricultural Range

Current Range

- MLT 625-75 H  • MLT 625-75 H
Series 1 E3
- MLT 735-120 LSU  • MLT 735 T 120 LSU
Series 6 E3
- MLT 940 T-120 LSU  • MLT 845 T 120 LSU
Series 7 E3





Unit Identification



SERVICE TRAINING

IDENTIFICATION OF THE LIFT TRUCK

As our policy is to promote a constant improvement of our products, our range of telescopic lift trucks may undergo certain modifications, without obligation for us to advise our customers.

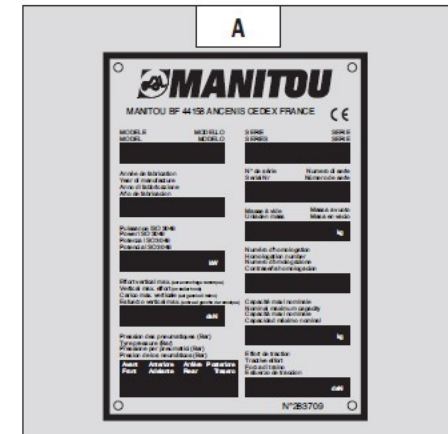
When you order parts, or when you require any technical information, always specify:

NOTE: For the owner's convenience, it is recommended that a note of these numbers is made in the spaces provided, at the time of the delivery of the lift truck.

LIFT TRUCK MANUFACTURER'S PLATE (FIG. A)

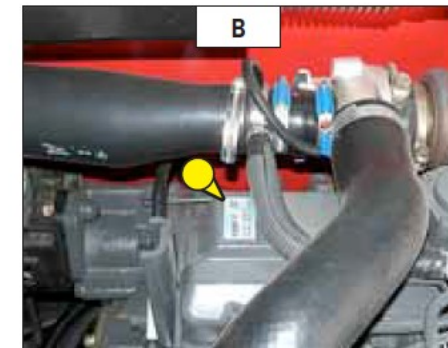
- Model
- Series
- Serial Nr
- Year of manufacture

For any further technical information regarding your lift truck refer to chapter: 2 - DESCRIPTION: CHARACTERISTICS.



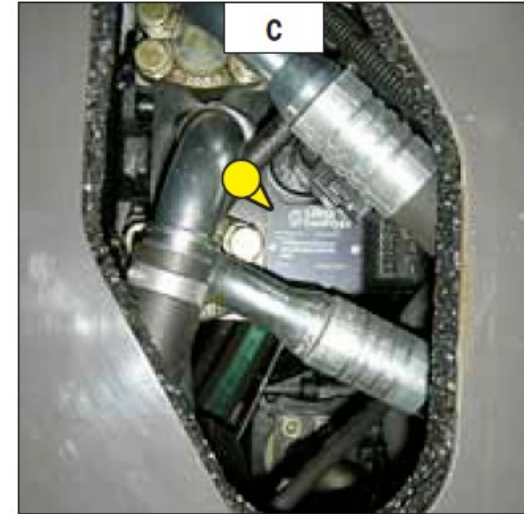
I.C. ENGINE (FIG. B)

- Model
- Serial Nr
- I.C. engine Nr



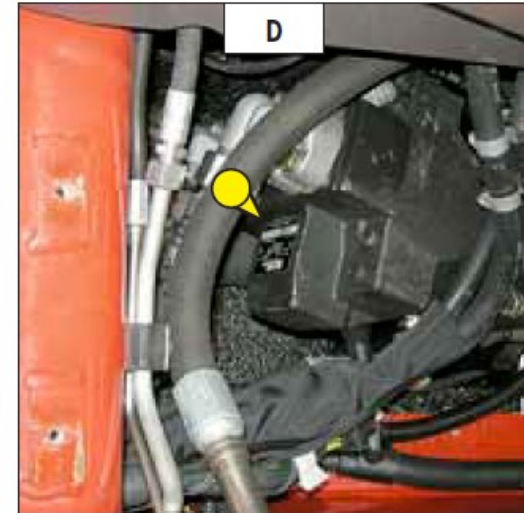
HYDROSTATIC PUMP (FIG. C)

- MANITOU reference
- Type of codification
- Serial Nr
- Manufacturer's Nr
- Year of manufacture



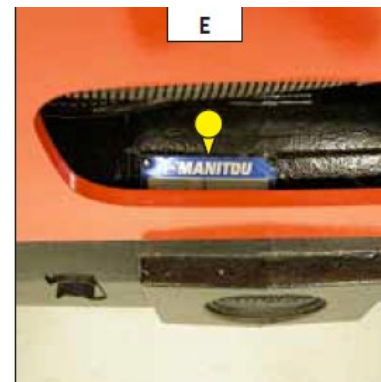
HYDROSTATIC MOTOR (FIG. D)

- MANITOU reference
- Type of codification
- Serial Nr
- Manufacturer's Nr
- Year of manufacture



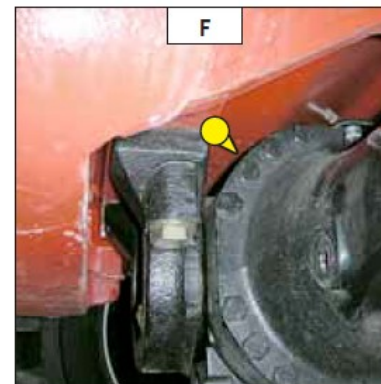
FRONT AXLE (FIG. E)

- Type
- Serial Nr
- MANITOU reference



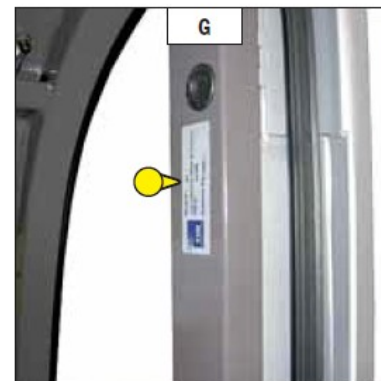
REAR AXLE (FIG. F)

- Type
- Serial Nr
- MANITOU reference



CAB (FIG. G)

- Type
- Serial Nr





Specifications

XPRT
TRAINING

SERVICE TRAINING

Specifications

I.C. ENGINE		
Type		KUBOTA V3307
Fuel		Diesel
Number of cylinders		4 in line
Suction		Supercharged
Injection system		Direct
Ignition sequence		1.3.4.2
Capacity	cm ³ (cu/in)	3331 (203.3)
Bore and stroke	mm (in)	94 x 120 (3.7 x 4.7)
Compression ratio		20
Nominal rating loaded	rpm	2600
Rating slow unladen	rpm	895
Max. rating unladen	rpm	2800
Power ISO 3046-1	cv- kW	75 - 55,4
Power SAE J 1995	cv- kW	75 - 55,4
Maximum torque ISO 3046-1	N.m	265 to 1400 rpm
Air cleaner	µm	3
Type of cooling		By water
Fan		Puller

Specifications

TRANSMISSION			
Hydrostatic pump			DANFOSS
Type			Variable displacement piston
Forward/reverse selector			Electro-hydraulic
Number of forward speeds			2 (1 low and 1 high)
Number of reverse speeds			2 (1 low and 1 high)
Main pump			
MAX./MIN. displacement	cm3/rev		0 - 45
MAX. flow rate	l/mn (gl/mn)		117 (30.9)
Working pressure	bar (psi)		400 (5802)
Boost pump			
Capacity	cm3/rev		12
MAX. flow rate	l/mn (gl/mn)		31 (8)
Boost pressure MAX. R.P.M.	bar (psi)		24 (348) (transmission in neutral)
Hydrostatic motor			DANFOSS
Type			Variable displacement piston
MAX./MIN. displacement	cm3/rev		23 - 80
Gear box			DANA
Front axle			DANA
Differential			45 % limited slip differential
Rear axle			DANA
Differential			Without locking
Drive wheels			4RM Permanent
Switch for 2/4 drive wheels			No
Front tyres			DUNLOP
Size			12.0-18 12PR T86 Stabilarge TUBELESS
Pressure	bar (psi)		4,2 (61)
Rear tyres			DUNLOP
Size			12.0-18 12PR T86 Stabilarge TUBELESS
Pressure	bar (psi)		4,2 (61)

