



COSTRUZIONI INDUSTRIALI
Via Cristoforo Colombo, 2
Loc. CAVAZZONA
41013 Castelfranco Emilia (MO)
☎ Tel. 059/959811 - Fax 059/959850

YOUR DEALER

04/2006 REF : 648353 (EN)

MHT 860 L

- E2 -

REPAIR MANUAL



COSTRUZIONI INDUSTRIALI
Via Cristoforo Colombo, 2
Loc. CAVAZZONA
41013 Castelfranco Emilia (MO)
☎ Tel. 059/959811 - Fax 059/959850

YOUR DEALER

04/2006 REF : 648353 (EN)

MHT 860 L

- E2 -

REPAIR MANUAL

1^a DATA DI PUBBLICAZIONE 1^{ère} DATE D'EDITION 1st DAT PUBLICATION 1st DATUM AUSGABE		04/06
INFORMAZIONI CATALOGO INFORMATION CATALOGUE CATALOGUE INFORMATION KATALOG AUSKUNFT	DATA DI PUBBLICAZIONE DATE D'EDITION DATE PUBLICATION DATUM AUSGABE	OSSERVAZIONI OBSERVATION OBSERVATION BEMERKUNG
<p style="text-align: center;">Text and illustrations herewith enclosed may not be reproduced, not even in part and by any means.</p> <p style="text-align: center;">Because of the possible time lag between the introduction of technical modifications (an on-going process the aim of which is to offer products which are being continually improved) and the latest up date of the manual, we must point out, for the sake of correctness, that the data contained in this edition are liable to change at any time and are therefore not binding.</p>		

TABLE OF CONTENTS

<u>CHAPTER</u>	<u>UNITS</u>	<u>PAGE</u>
- CHARACTERISTICS	1	
- ENGINE 1104C-44TA	2	
- HYDROSTATIC	3	
- DRIVE AXLES TYPE MO212	4	
- GEAR BOX Drop Box MO357	5	
- HYDRAULIC Hydraulic system Pressure control Pump A10VO 28-85 DFR Series 52	6	1 9
- ELECTRICAL Electric system Testing the safety system	7	1 27

UNIT 1

CHARACTERISTICS

CHARACTERISTICS

CHARACTERISTICS

Engine (E2)

- Type	PERKINS 1104C-44TA
- Number of cylinders	4
- Strokes	4
- Injection system	direct
- Firing order	1.3.4.2.
- Displacement	4400 cm ³
- Bore	105 mm
- Stroke	127 mm
- Compression ratio	17.5 : 1
- Rated speed	2200 min ⁻¹
- Idle speed	800 min ⁻¹
- Power rating ISO/TR 14396	132 HP / 97 kW
- Maximum torque	500 Nm 1400 min ⁻¹

Cooling System

- Type	Water cooled
- Intake fan	1760 min ⁻¹

No. of blades	7
- Diameter	550 mm

Thermostat	
- Complete opening	82° C

Electrical System:

- Earth	Negative
- Battery	12 v - 120 Ah
- Alternator	12 v - 72 Ah
- Voltage regulator	built into alternator
- Starting	12 v

Brakes:

- Type	Disk in oil bath
- Service brake	Pedal-operated, acts on front and rear wheels
- Parking brake	Hydraulic, with negative action, acts on front axle service brakes

Transmission Unit

- Type	Hydrostatic
- Type	with continuous speed adjustment.
	Variable displacement pump and engine with inching
- Gear	Hydraulic operation
- No. of forward gears	2
- No. of reverse gears	2
- Reverser	Electrohydraulic

Hydraulic circuit

Boom movements	
- Type of pump	with pistons
- Flow rate	140 l/min
- Pressure	275 bar

Steering circuit

- Type of pump	Load sensing
- Flow rate	140 l/min
- Pressure	175 bar

Levelling circuit

- Type of pump	with gears
- Flow rate	25 l/min
- Pressure	205 bar

Cooling system

Water and intercooler through hydraulic motor

- Type of pump	with gears
- Flow rate	25 l/min
- Pressure	175 bar

Hydraulic oil

- Electric fans	N° 4
-----------------	------

Front and rear tyres:**Standard:**

- Type	18x22.5 16PR
- Operating pressure	5 bar

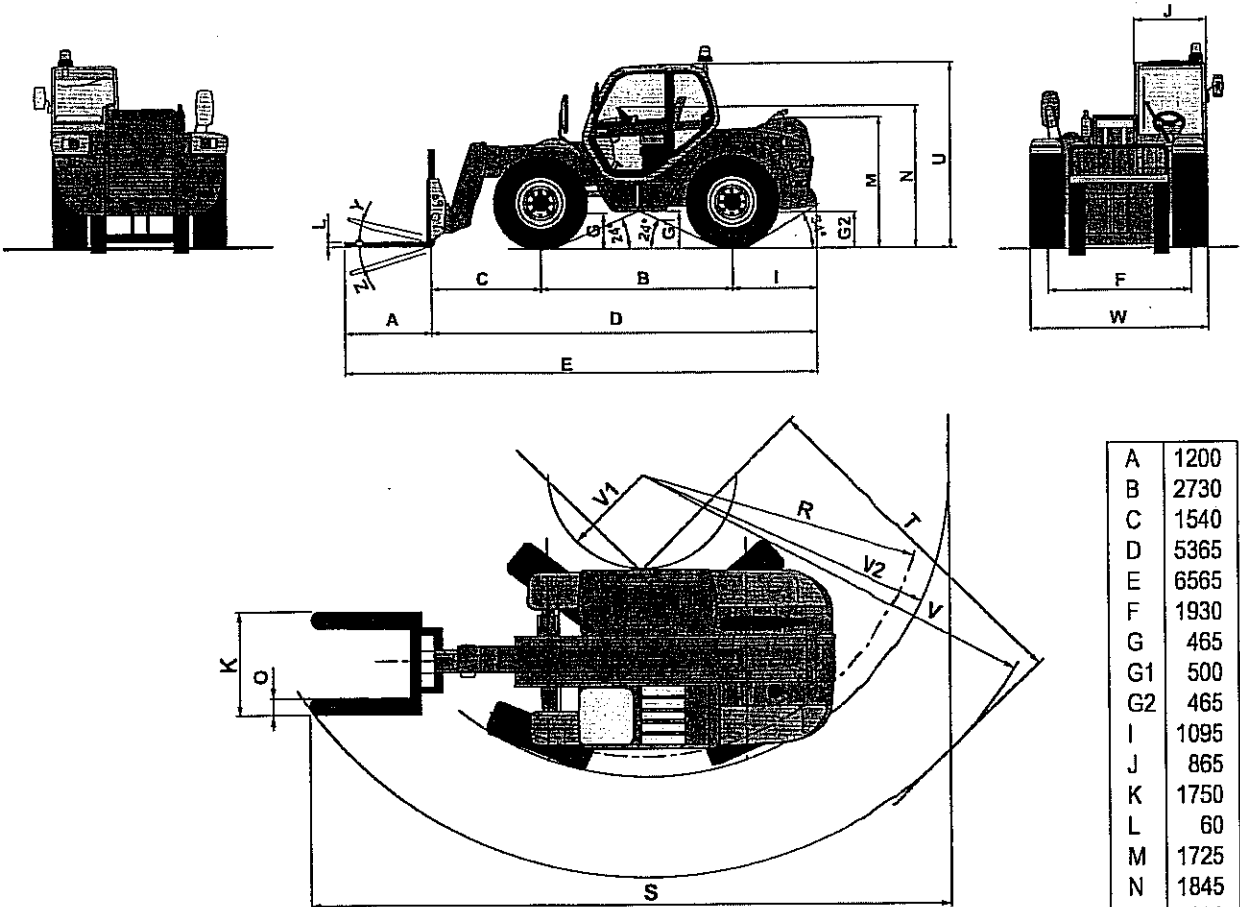
Optional:

- Type	445/70 R24
- Operating pressure	4 bar

Specifications

- Maximum speed	
Forwards/Backwards - without load	35 km/h
Forwards/Backwards - with load	10 km/h
- Lifting speed	
without load with boom retracted	30.6 m/min (9.8 sec)
- Descent speed without load	
with boom retracted	38.5 m/min (7.8 sec)
- Extension speed without load	17 m/min (11.3 sec)
- Boom retraction speed without load	28.6 m/min (6.7 sec)
- Upward inclination time without load	29.5 °/sec (4.6 sec)
- Downward inclination time without load	32.3 °/sec (4.2 sec)
- Fork dimensions	
(length x width x thickness)	1200 x 200 x 60 mm
- Max. boom ext. distance from fork	1750 mm
- Distance from centre of gravity	600 mm
- Standard lifting height	8100 mm
- Rated capacity with standard equipment	6000 kg
- Weight with standard equipment and forks	11515 kg
- Distribution of wt. along axle with standard equipment	
Front axle - no load	4500 kg
Rear axle - no load	7015 kg
- Weight loaded with standard equipment and forks	17515 kg
- Wt. loaded with boom retracted and forks 20 cm off the ground	
Front axle	15825 kg
Rear axle	1690 kg
- Towing capacity	
No load	8200 kg
With load	8800 kg
- Vibrations	
Acceleration of upper limbs	≤ 2.5 m/s ²
Acceleration of body (feet or seated part)	≤ 0.5 m/s ²
- Noise	
Noise level (in accordance with EN 2000/14CE)	LwA 103.7 dB
Noise level in driving seat (in accordance with EN 12053)	LpA 80.8 dB

DIMENSIONS

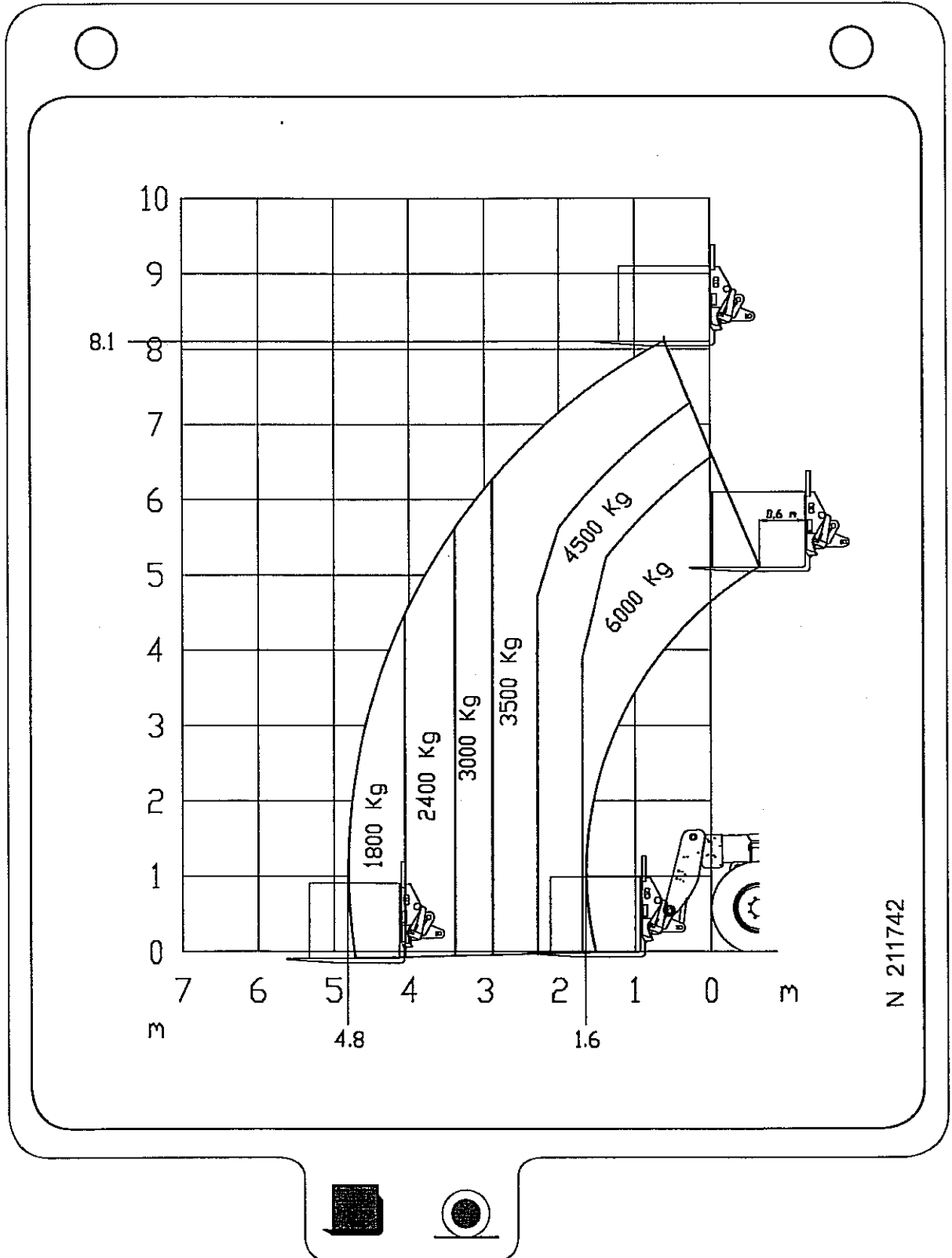


A	1200
B	2730
C	1540
D	5365
E	6565
F	1930
G	465
G1	500
G2	465
I	1095
J	865
K	1750
L	60
M	1725
N	1845
O	200
R	3550
S	7950
T	4050
U	2450
V	4850
V1	1130
V2	3750
W	2400
Y	11°
Z	125°

mm

LOAD CHART

LOAD CHART WITH FORKS



N 211742

UNIT 2

ENGINE

**DISASSEMBLY OF THE I.C. ENGINE
PERKINS 1104C-44TA**

DISASSEMBLY OF THE I.C. ENGINE

10-3-15 EN

