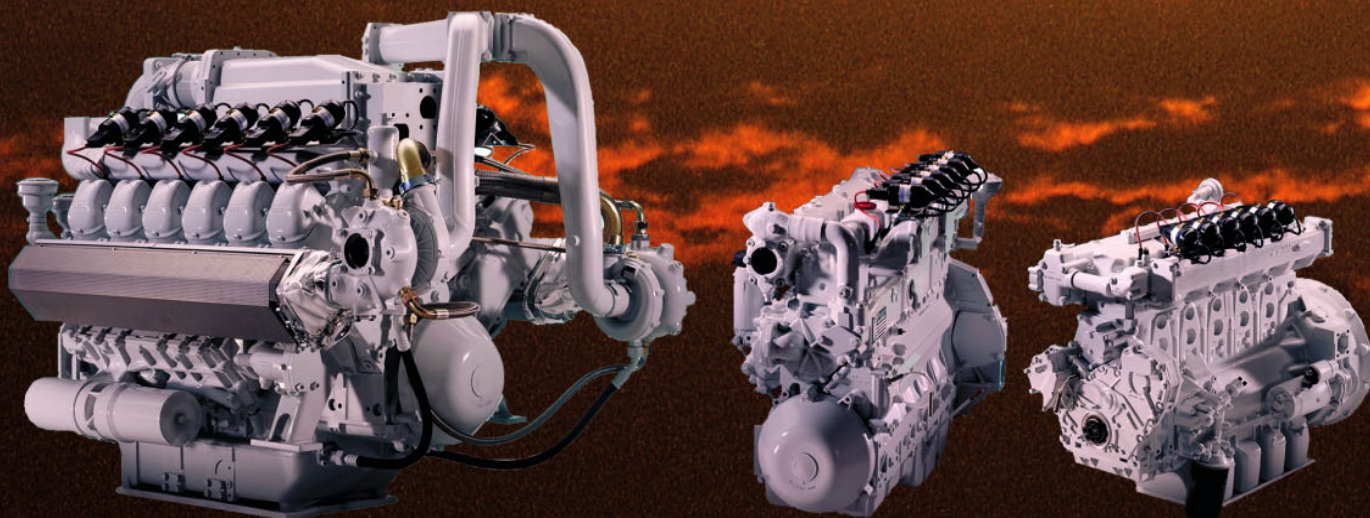


Technical Information

# MAN industrial Gas engines Installation Instructions





---

## General information

These installation instructions are designed to provide assistance and advice for installing MAN industrial gas engines.

Carefully read and comply with the information provided in this instruction manual. In this way, you will avoid accidents, retain the manufacturer's warranty and have to your disposal a fully operative and efficient engine.

The objective of this publication is to create conditions for smooth, trouble-free operation of the entire system and to prevent installation-related malfunctions and possible consequential damage to the engine.

Make sure that these installation instructions are made available to all those involved in operation, maintenance and repair and that the contents are understood.

Disregard of this publication can result in malfunctions and engine damage as well as personal injury for which the manufacturer shall accept no liability.

The applicable accident prevention regulations as well as all other generally recognized safety regulations and codes of industrial medicine practice must be observed.

## Field of application

These installation instructions apply to the installation of stationary industrial gas engines. These instructions neither apply to mobile applications, e.g. vehicle engines, nor are they type-related.

## General regulations

The installation and operation of MAN industrial gas engines must satisfy all legislation, stipulations and regulations valid at the place of use and for the type of operation.

## Applicability

These installation instructions apply to MAN E 08.. / E 28.. series industrial gas engines from Nuremberg production, superseding all previous installation instructions for MAN industrial gas engines.

MAN reserves the right to make technical modifications in the course of further development.

## Warranty

Warranty claims against MAN will be accepted only if these installation instructions have been complied with.



## Foreword

---

This engine is built exclusively for the application corresponding to the scope of delivery as defined by the device manufacturer (intended use as directed). Any other use that extends beyond that directed shall be considered not for the intended purpose. MAN shall not be liable for damage resulting from such action. The user alone shall bear the risk.

Use for the intended purpose also includes compliance with the operating, maintenance and repair conditions specified by the manufacturer. The engine may only be used, maintained and repaired by persons who are familiar with it and have been instructed in the possible dangers.

On request, MAN will perform installation inspections at a charge.

Final acceptance of prototypes for series production installations will be valid only if no subsequent modifications are made.

Engine repairs must correspond to use for the intended purpose as directed. Only parts approved by the manufacturer for the respective purpose are to be used for conversion work. Unauthorized modifications to the engine shall exempt the manufacturer of any liability for any resulting damage.

If any modifications to an engine installation accepted by MAN are planned, MAN is to be informed in writing as this may render a new acceptance test necessary.

Warranty claims against MAN shall concern the scope of delivery defined in the order confirmation.

MAN reserves the right to make technical modifications in the course of product development.

© 2003 MAN Nutzfahrzeuge Aktiengesellschaft

Reprinting, duplication of translation, even in the form of excerpts, is prohibited without written permission of MAN. All rights under the copyright law are expressly reserved by MAN.



---

	Page
Safety Regulations .....	4
Engine Vicinity - Overview .....	9
Engine Room Design .....	13
Engine Room Ventilation .....	14
Engine Room Design .....	18
Engine Mounting .....	20
Power Take-Off .....	23
Intake System .....	26
Exhaust System .....	29
Engine Cooling System .....	33
Intercooling .....	42
Electrical System .....	44
Annex .....	47
Antifreeze and Anticorrosion Agents in Cooling Systems	
Coolant Hoses	
Battery sizes	
Gas quality	
Waste oil analyses, Limiting values	
Conversion of Physical Units	



### General information

A gas engine is not an independent machine as defined by the EC machinery directive. The manufacturer of the complete installation must compile a written declaration of compliance with the EC machinery directive (89/392/ENG, Annex IIA) as well as an Operator's Manual in writing.

This brief overview summarizes important instructions to be heeded when an engine system is installed and commissioned in order to impart the knowledge necessary to prevent accidents involving injury to persons, damage to the plant and harm to the environment. Observe the additional information provided in the Operator's Manual.

#### Important:

If, despite all safety precautions, an accident occurs as a result of contact with caustic substances, acids, penetration of fuel into the skin, scolding with hot oil, antifreeze splashes into the eyes etc., **consult a doctor immediately!**

### 1. Instructions for preventing accidents involving personal injury

#### During installation of the engine and prior to its commissioning

- Persons must not stand under an engine suspended from a crane hook. Keep lifting gear in good working order
- Read the Operator's Manual carefully prior to commissioning of the engine.
- A sign displaying "No entry for unauthorized persons" must be attached such that it is well visible at the entry to the engine room of stationary engines.
- The engine must be operated by authorized personnel only. When working on the engine, take the necessary steps to ensure that the engine cannot be started by unauthorized persons.
- Shield off rotating engine parts such as cardan shafts, flanges with suitable protection against accidental contact. Do not get too close to revolving components while the engine is running. Wear close-fitting working clothes.

